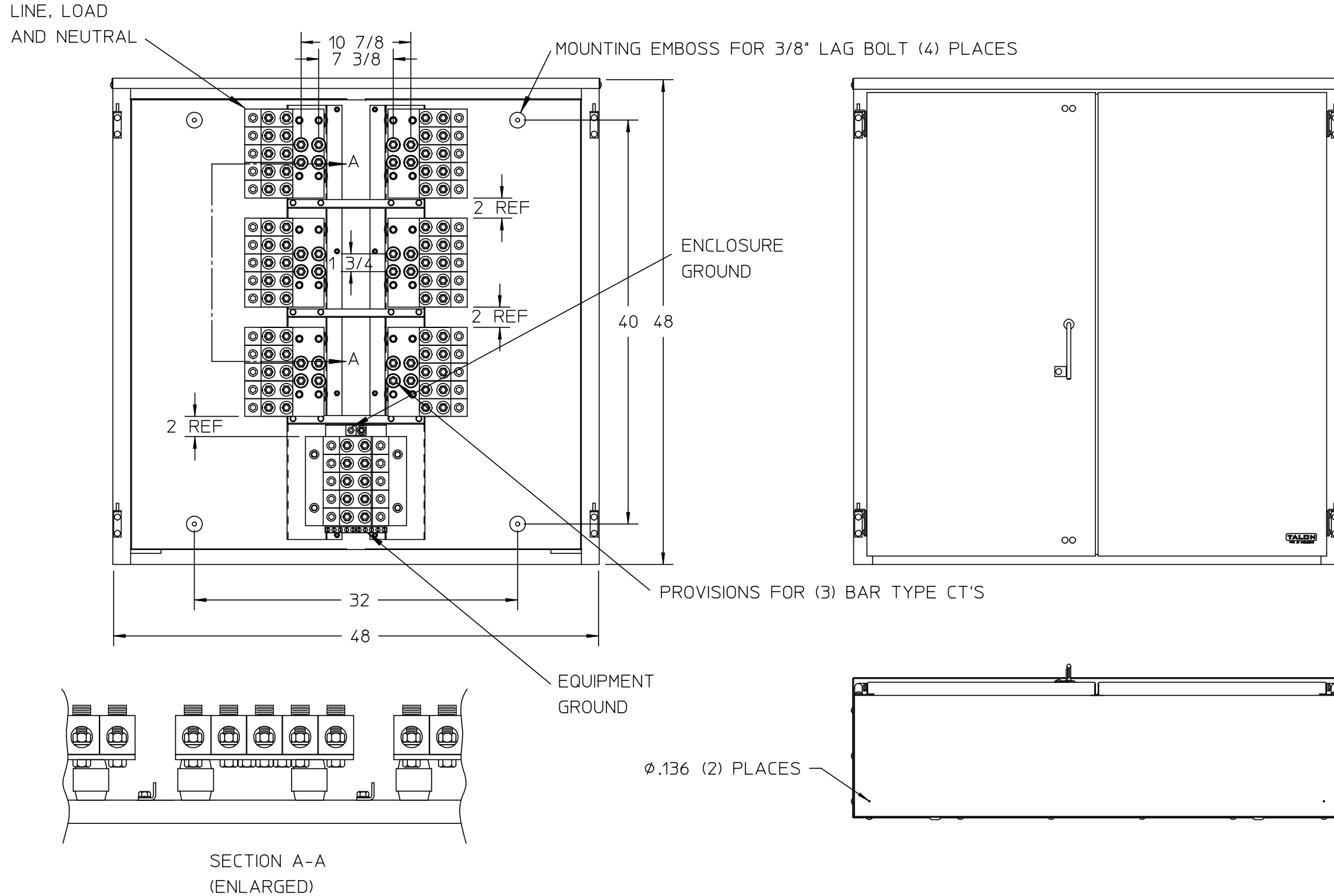


**Features and Ratings**

- 2000A Continuous, 2000A Max., 600V AC
- Outdoor Enclosure (NEMA Type 3R)
- Painted G90 Steel
- 3 Phase, 4 Wire
- For Underground Service

**Connectors, Wire Sizes and Torques**

CONNECTOR	WIRE SIZE	TORQUE
LINE, LOAD, NEUTRAL	300-750kcmil	500 IN.-LBS.
EQUIP GROUND	#14-3 AWG	50 IN.-LBS.
ENCL GROUND	#6-250kcmil	275 IN.-LBS.



© 2015 Copyright Siemens Industry, Inc.



**Outdoor Current Transformer Enclosure**

Description:

**CT ENC 2000A 3P DD**

5/25/11 JT DO NOT SCALE DRAWING Dwg No: LG124848CTS2