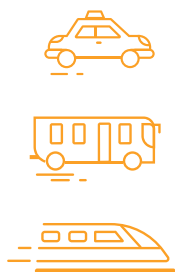


A



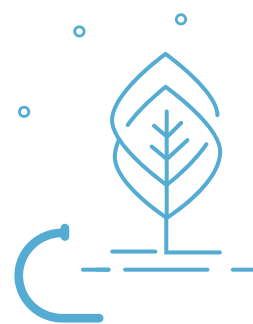
Successful MaaS platforms offer **ALTERNATIVES** to private cars by taking passengers to their destination quickly and economically.



B



MaaS apps produce valuable **BIG DATA**. Mobility Data Analytics helps optimizing transport offers, even without storing personal data.



If low-emission modes build the core of intermodal transport chains, MaaS helps to reduce our **CARBON FOOTPRINT**.

D



As feeder and fetcher for public transport, especially in rural areas or at night, **DEMAND RESPONSIVE TRANSPORT (DRT)** is an integral part of MaaS.

E



Public transport operators currently face a heap of new mobility services. MaaS **EMPOWERS** them to enhance their own services with these new options.



F



MaaS means **FLEXIBILITY**: Passengers can use any available mode of transport spontaneously at any given moment.



G



With congestion and pollution on the rise, city **GROWTH** makes the need for MaaS even more obvious.



H



From trip planning apps to real-time management: Our **HAFAS** product portfolio is a modular toolkit for MaaS providers.



I



Combining all available of transport to **INTERMODAL TRANSPORT CHAINS** lays the ground for Mobility as a Service.



J



In the **JUNGLE** of mobility options, MaaS makes pathfinding easier for passengers and transport operators alike.



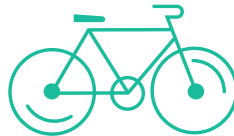
K



The **KEY** to a successful MaaS app is an algorithm that calculates intermodal transport chains tailored to passenger needs.



L



The trend towards a greener, more connected and less ownership-oriented **LIFESTYLE** increases the need for truly sustainable mobility.



M



MaaS apps can be set up step by step: Thanks to our **MODULAR** software, you can add data management tools, ticketing and interfaces for a wide variety of transport services bit by bit to your existing trip planner.

N



Car and bike sharing, DRT or carpooling – **NEW MOBILITY** options are a chance for public transport providers, not a threat: Integrate them with your own offers and facilitate intermodal routing from door to door!



A smart **ORCHESTRATION** turns the jungle of transport modes into raw material for sustainable mobility.



MaaS apps can learn from the users' behavior. With **PERSONALIZED** and **PROACTIVE** travel recommendations, they enhance the passenger experience even more.



High **QUALITY** comes with precise calculation: Inter-modal transport is only attractive when it's seamless.



REAL-TIME trip alternatives are essential – especially if unexpected events occur.



MaaS for the start-up and technology hotspot **SILICON VALLEY**: Our BART Trip Planner provides seamless commute in the San Francisco Bay Area.



HAFAS **TRIP PLANNERS** are successful all over the world. Upgrading them to comprehensive MaaS apps is a big step into the future of mobility!



Successful MaaS apps need to be **USER-FRIENDLY**. At HaCon, we continuously enhance them to create the best possible **USABILITY**.



		
<p>MaaS trip planners VARIABLY combine different means of transport. This creates customized transport chains tailored to the situation and the user's current needs.</p> 	<p>One app for all devices: Apart from mobile apps, responsive WEBAPPS are also ideally suited as user interfaces for MaaS.</p> 	<p>With the next-generation ticketing option XIXO, passengers automatically pay the best price across all means of transport.</p> 
		
<p>YES WE CAN: With the combined power of Siemens Mobility, HaCon, eos.uptrade, and Bytemark, we provide you with proven components for all requirements of a successful MaaS app.</p>	<p>With the aim of ZERO congestion, Mobility as a Service solutions contribute to the shift of traffic from road to rail.</p> 	