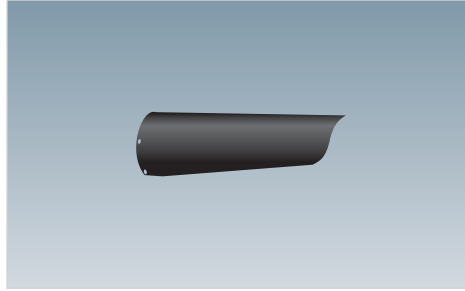


Wayside Signaling Systems Products



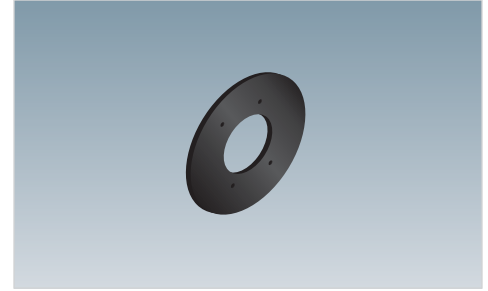
CLS-20R Series
Housing and Lighting Modules

B43 - B44



CLS-20R Series
Visors

B45



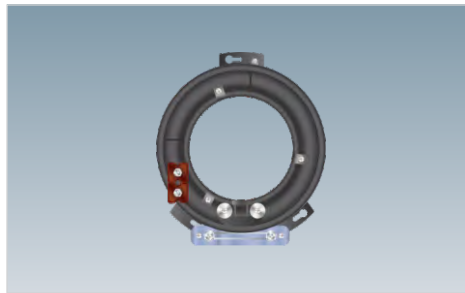
CLS-20R Series
Snowshields

B46



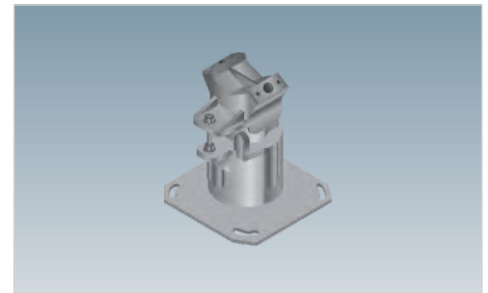
CLS-20R Series
Backgrounds

B47



CLS-20R Series
Accessories

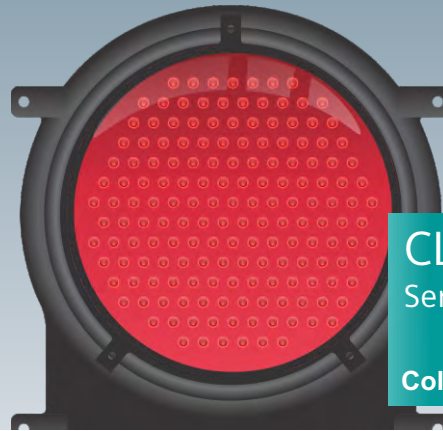
B48 - B49



CLS-20R Series
Mounting Brackets

B50





CLS-20R
Series

Colorlight Signaling Systems

Overview



*CLS-20R Colorlight Assembly for (2) Aspects shown for reference purposes only!
Actual unit selected may vary in mounting and features.*

SIEMENS CLS-20R color light signals have a rear-serviceable optical module which includes both inner and outer doublet lenses, as well as the prefocused lamp and socket. Both outer and inner lenses can be inspected, cleaned or replaced without going around to the front of the signal. The background and visor remain in place on the signal housing so the optical module is small, light in weight and easily handled.

The optical module assembly is built with a precision die cast aluminum body and lamp mounting. This assures that the optics will remain rigidly aligned during servicing and light output will be maintained. Doors are interlocked to prevent opening any door that may give less restrictive indication from light entering an open door. This maintains the convenience of individual doors without the possibility of displaying an improper aspect during servicing.

The outer housing is black painted precision die cast aluminum and provides space for AREMA® binding post type terminal blocks, resistors or transformers.

SIEMENS Part Number	Description
CLS-20R Housing	
NYK:044600-01X	CLS-20R Housing
CLS-20R Lenses and Lighting Modules	
NYK:044054-40	Clear 40° Deflection Lens
NYK:044054	Clear Center Deflection Lens
NYK:044603-L12-R	RED LED 12VDC Lighting Module
NYK:044603-L12-G	GREEN LED 12VDC Lighting Module
NYK:044603-L12-Y	YELLOW LED 12VDC Lighting Module
NYK:044603-L12-L	LUNAR LED 12VDC Lighting Module
CLS-20R Rods	
NYK:044036-1	Locking Rod (1) Aspect
NYK:044036-2	Locking Rod (2) Aspect
NYK:044036	Locking Rod (3) Aspect
NYK:044006-1X	Clamp On Sighting Tool (Requires NYK:044008-1X lifting bracket. See Page B31)
NYK:044004	Lampholder Post
NYK:044005	Lampholder Slide
NYK:042019-10	Bulb Socket



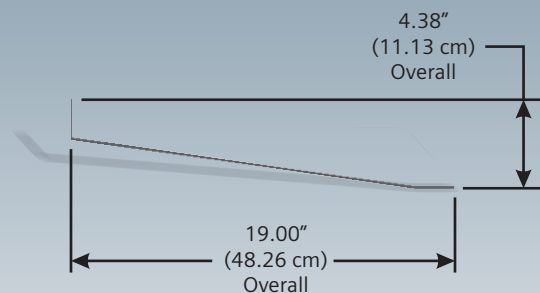
Wayside Systems Wayside Signaling Systems Products	SIEMENS Part Number	Description
	CLS-20R Aluminum Visors	
	NYK:042005-107	Aluminum 6 3/8" Long Visor w/o Hardware
	NYK:042005-107X	Aluminum 6 3/8" Long Visor w/ Hardware
	NYK:044018	Aluminum 12" Long Visor w/o Hardware
	NYK:044018-X	Aluminum 12" Long Visor w/ Hardware
	CLS-20R Polycarbonate Visors	
	NYK:042005-19	Polycarbonate 6 3/8" Long Visor w/o Hardware
	NYK:042005-19X	Polycarbonate 6 3/8" Long Visor w/ Hardware
	NYK:042005-147	Polycarbonate 16" Long Visor w/o Hardware
	NYK:042005-147X	Polycarbonate 16" Long Visor w/ Hardware
	CLS-20R Steel Visors	
	NYK:042005-35	Steel 6 3/8" Long Visor w/o Hardware
	NYK:042005-35X	Steel 6 3/8" Long Visor w/ Hardware
	NYK:042005-30	Steel 12" Long Visor w/o Hardware
	NYK:042005-30AX	Steel 12" Long Visor w/ Hardware

SIEMENS Part Number	Description
CLS-20R Aluminum Snowshields	
NYK:042005-130	(1) Aspect Aluminum w/o Hardware
NYK:042005-130X	(1) Aspect Aluminum w/ Hardware
NYK:042005-131	(2) Aspect Aluminum w/o Hardware
NYK:042005-131X	(2) Aspect Aluminum w/ Hardware
NYK:042005-130	(3) Aspect Aluminum w/o Hardware
NYK:042005-130X	(3) Aspect Aluminum w/ Hardware
CLS-20R Steel Snowshields	
NYK:042005-128	(1) Aspect Steel w/o Hardware
NYK:042005-128X	(1) Aspect Steel w/ Hardware
NYK:042005-125	(2) Aspect Steel w/o Hardware
NYK:042005-125X	(2) Aspect Steel w/ Hardware
NYK:042005-115	(3) Aspect Steel w/o Hardware
NYK:042005-115X	(3) Aspect Steel w/ Hardware

CLS-20R Series - Color Light Signals
Backgrounds

Wayside Systems Wayside Signaling Systems Products	SIEMENS Part Number	Description
	CLS-20R Aluminum Background	
	NYK:044021-5	(1) Aspect Aluminum w/o Hardware
	NYK:044021-X	(1) Aspect Aluminum w/ Hardware
	NYK:044020-7	(2) Aspect Aluminum w/o Hardware
	NYK:044020-X	(2) Aspect Aluminum w/ Hardware
	NYK:044019-11	(3) Aspect Aluminum w/o Hardware
	NYK:044019-X	(3) Aspect Aluminum w/ Hardware
	CLS-20R Polycarbonate Background	
	NYK:044021-4	(1) Aspect Polycarbonate w/o Hardware
	NYK:044021-1X	(1) Aspect Polycarbonate w/ Hardware
	NYK:044020-6	(2) Aspect Polycarbonate w/o Hardware
	NYK:044020-1X	(2) Aspect Polycarbonate w/ Hardware
	NYK:044019-10	(3) Aspect Polycarbonate w/o Hardware
	NYK:044019-1X	(3) Aspect Polycarbonate w/ Hardware
	CLS-20R Steel Background	
	NYK:044021-6	(1) Aspect Steel w/o Hardware
	NYK:044021-2X	(1) Aspect Steel w/ Hardware
	NYK:044020-8	(2) Aspect Steel w/o Hardware
	NYK:044020-2X	(2) Aspect Steel w/ Hardware
	NYK:044019-12	(3) Aspect Steel w/o Hardware
	NYK:044019-2X	(3) Aspect Steel w/ Hardware

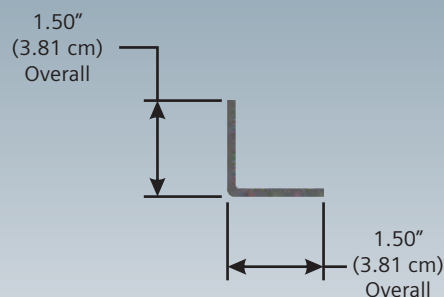
NYK:042005-134



CLS-20R, Visor Brace

- Weight is approx. 0.38 lbs. (0.17 kgs.)
- Aluminum construction
- NO mounting hardware

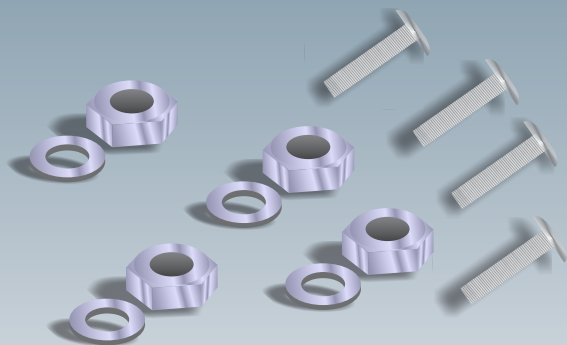
NYK:042005-135



CLS-20R, Visor Brace Angle

- Weight is approx. 0.20 lbs. (0.09 kgs.)
- Aluminum construction
- NO mounting hardware

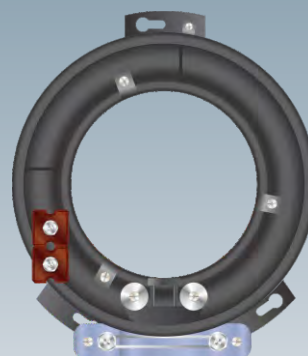
NYK:042077-500X



Hardware Kit for Visors, Snowshields and Backgrounds

- Weight is approx. 0.5 lbs. (0.23 kgs.)
- (8) 002590-TEJ mach truss head bolt
- (4) 023832 AAR clamp nuts
- (4) 023834 AAR beveled washers

NYK:044603-9GX



CLS-20R, Lens Bracket

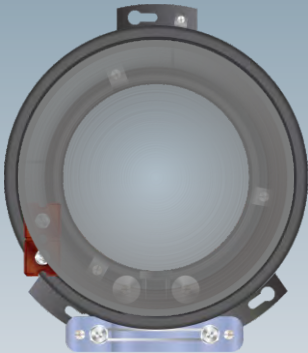
- Weight is approx. 5.0 lbs. (2.27 kgs.)
- Aluminum construction
- NO mounting hardware

NYK:044008-1X



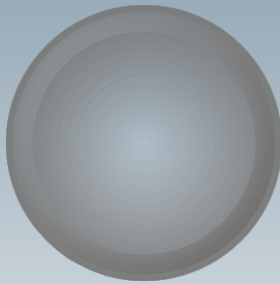
- CLS-20R Module Lifting Bracket**
- Weight is approx. 1.6 lbs. (0.73 kgs.)
 - Aluminum construction
 - NO mounting hardware

NYK:044603-1RX



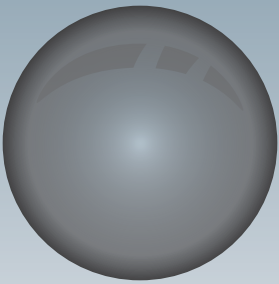
- Lens Bracket Assembly**
- Weight is approx. 5.0 lbs. (2.27 kgs.)
 - Aluminum construction
 - NO mounting hardware

NYK:042258-2



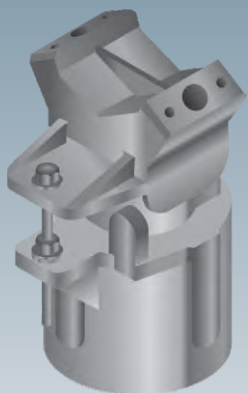
- CLS Anti Phantom Screen Lens**
- Weight is approx. 0.5 lbs. (0.23 kgs.)

NYK:044607-BX



- CLS Blackout Lens Kit**
- Weight is approx. 0.3 lbs. (0.13 kgs.)
 - Includes blackout lens and gasket

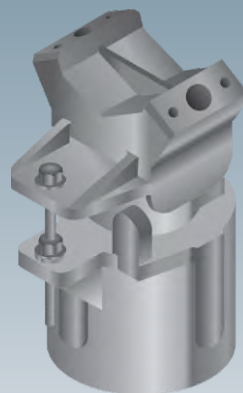
NYK:044011-4X



Top of Mast Bracket

- Weight is approx. 15.5 lbs. (7.03 kgs.)
- Aluminum construction
- Includes mounting hardware

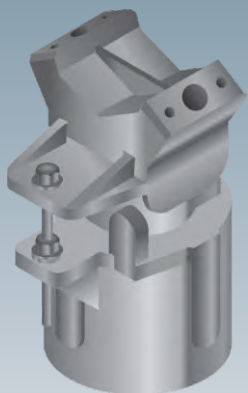
NYK:044011-5X



Top of Mast Bracket

- Weight is approx. 15.5 lbs. (7.03 kgs.)
- Aluminum construction
- Includes mounting hardware

NYK:044011-14X



Top of Mast Bracket

- Weight is approx. 15.5 lbs. (7.03 kgs.)
- Aluminum construction
- Includes mounting hardware