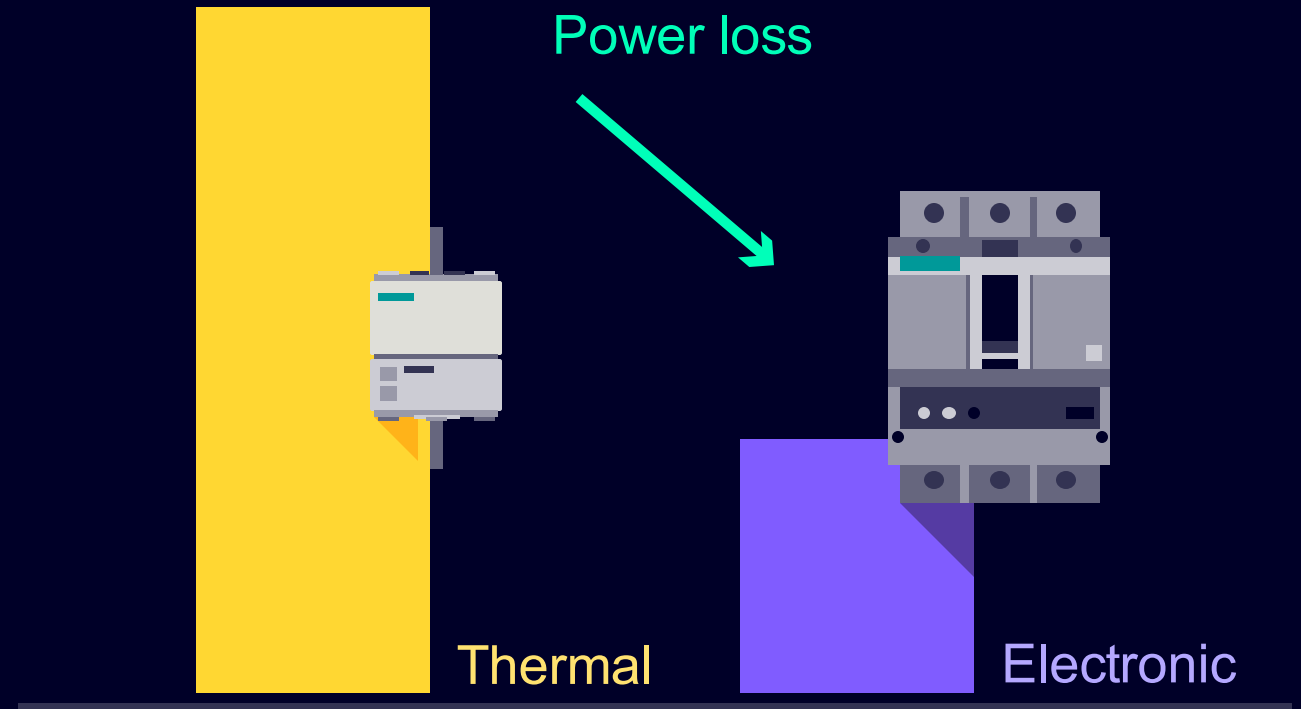





Protection devices with electronic trip unit



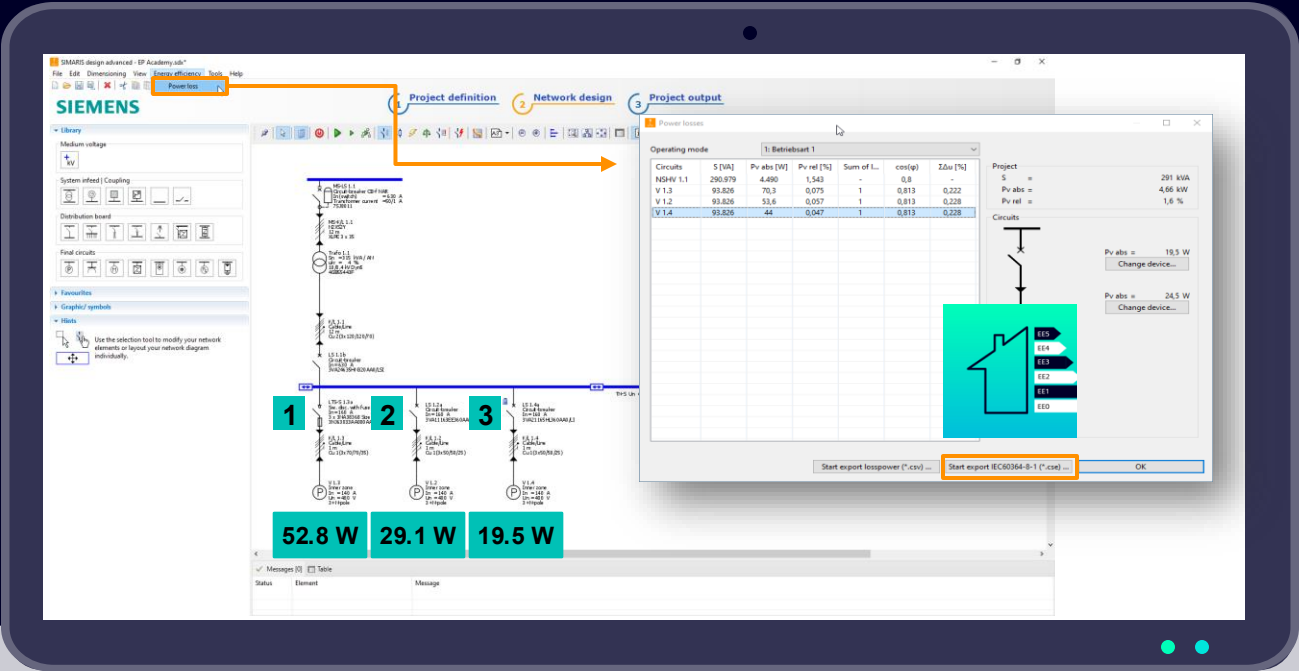
Protection devices with electronic release instead of thermal or thermomagnetic switch-off mechanisms

While electronically released circuit breakers operate directly dependent on current, devices with thermal or thermomagnetic release achieve disconnection through heating. This results in higher internal power losses.

Example application from SIMARIS design at a rated current of 160 A and an actual load current of 140 A

1		Switch-disconnector with fuse	52.8 W
2		MCCB TM release	29.1 W
3		MCCB with ETU	19.5 W

The **power loss** was reduced by **63%**.



Graphic and values from SIMARIS design