



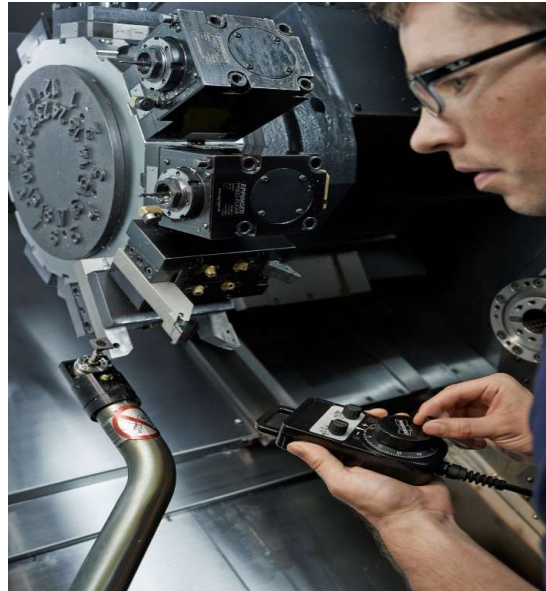
| Run MyVirtual Machine

From virtual commissioning to job preparation

How to improve production processes?



Extended Delivery time for machine and components



Machine collisions cause additional costs and time delay for spare parts delivery

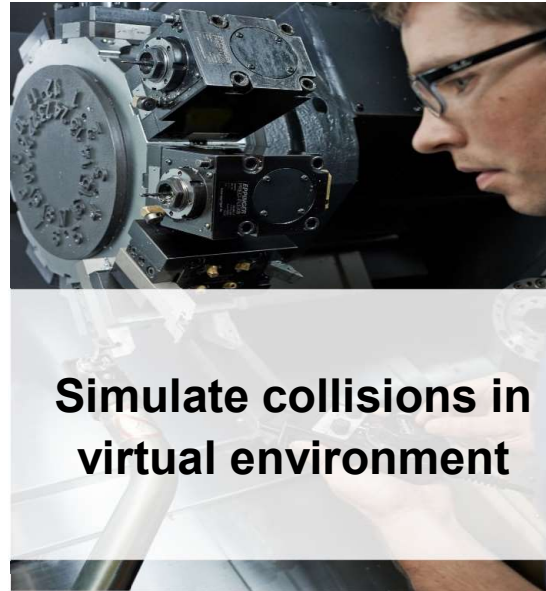


High effort and cost to setup and to maintain a training and showroom facility

How to improve production processes?



Extended Delivery time for machine and components



Machine collisions cause additional costs and time delay for spare parts delivery



High effort and cost to setup and to maintain a training and showroom facility

Where a digital twin is created and how can I get it for my job preparation?

Scalable and virtual
machine engineering at
**machine
manufacturer...**



Create MyVirtual Machine



...can be reused at
machine user for
scalable and virtual job
preparation



Run MyVirtual Machine

The digital twin unites all relevant technical departments and enables end-to-end collaboration



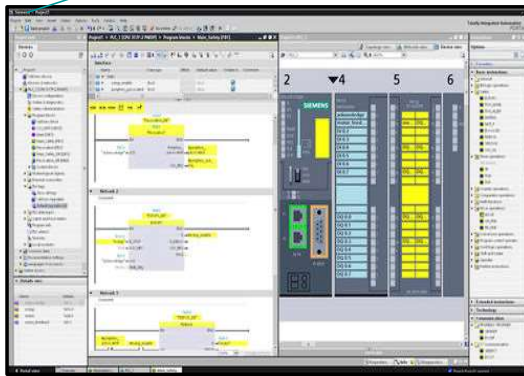
Scalable and virtual machine engineering at machine manufacturer...

Logic creation & configuration (PLC)

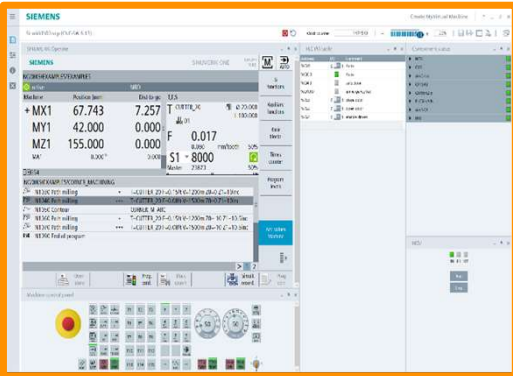
NC/PLC/HMI Simulation & Test

Peripheral simulation (Inputs / Outputs)

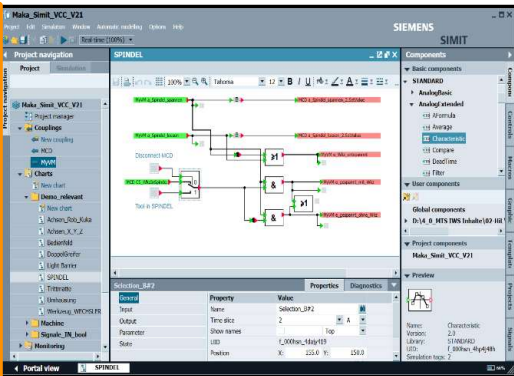
3D Mechatronics simulation



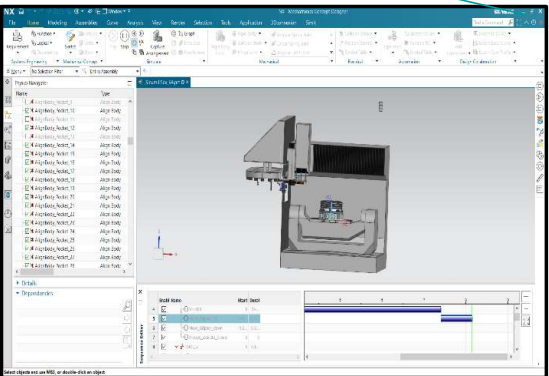
TIA Portal



Create MyVirtual Machine



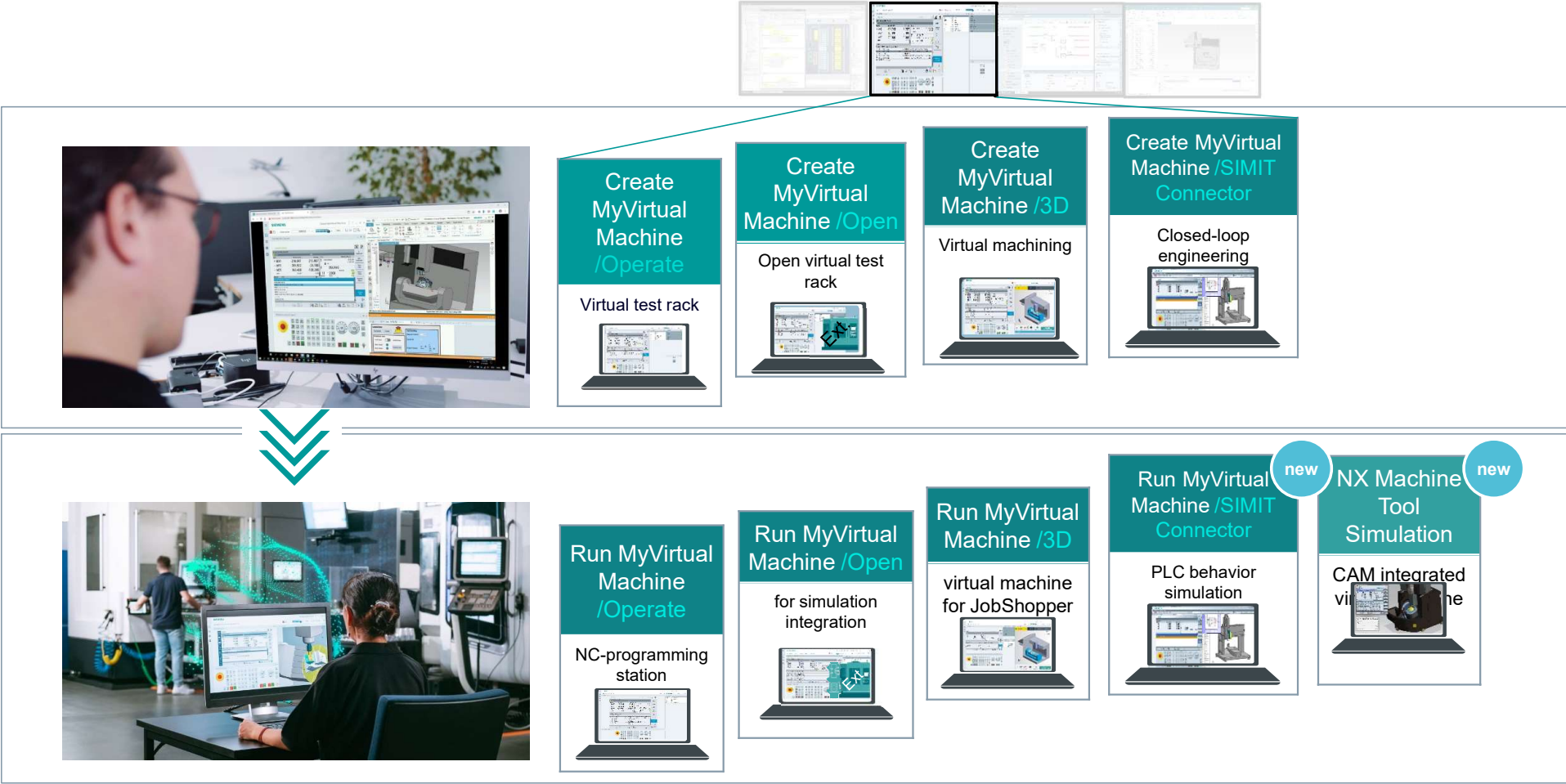
SIMIT Simulation Framework



Mechatronics Concept Designer

Create MyVirtual Machine is the central CNC virtual element on which most operations can be tested

Where a digital twin is created and how can I get it for my job preparation?



Run MyVirtual Machine /Operate Original CNC architecture and identical operation of the machine



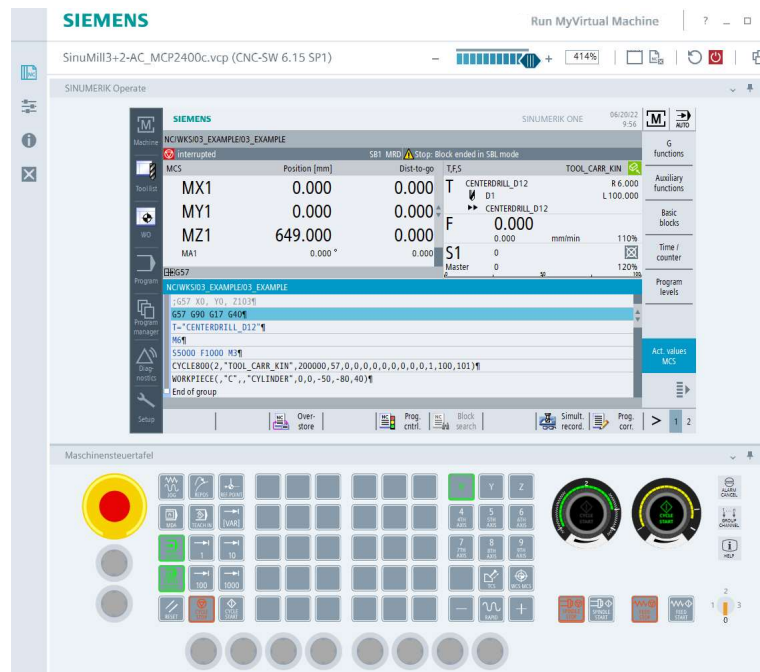
NC program check and
machining time estimation



Original Operate HMI with
OEM applications



Verification of the postprocessor



Run MyVirtual Machine /Open API interface for connection to other simulation systems



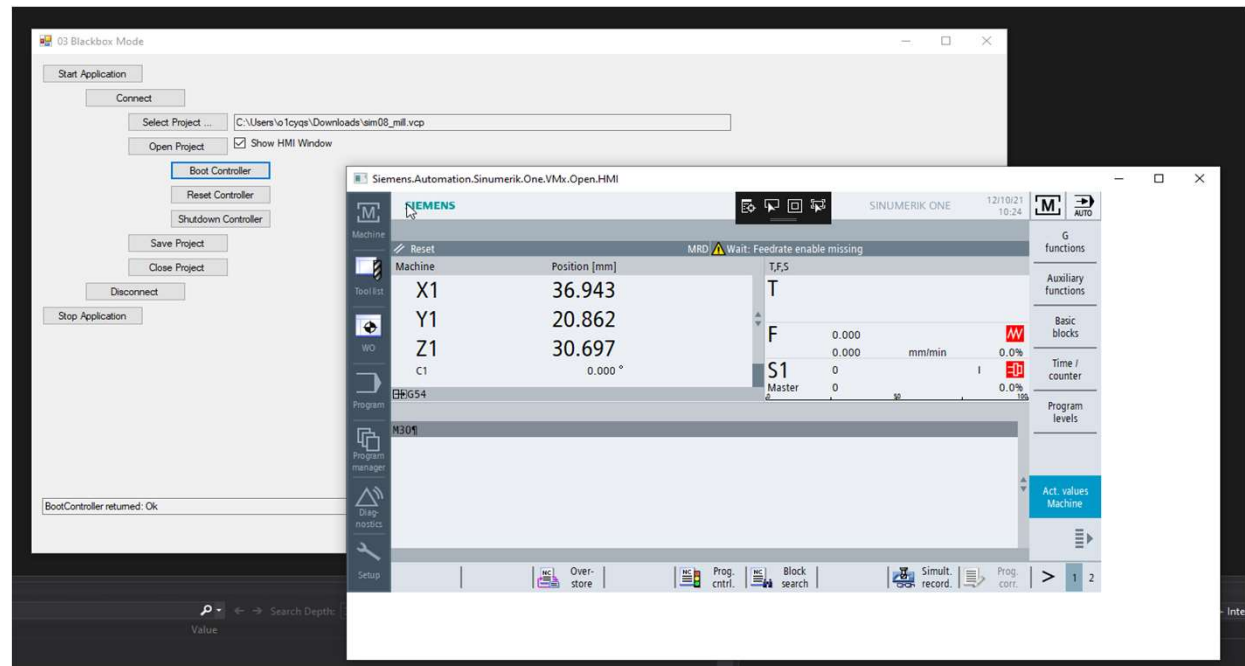
.NET/ C++ programming interface



Realization of test automation



Flexible integration into existing 3D simulations



Run MyVirtual Machine /3D Integrated 3D simulation without CAD-CAM environment



NC program verification
with kinematics simulation



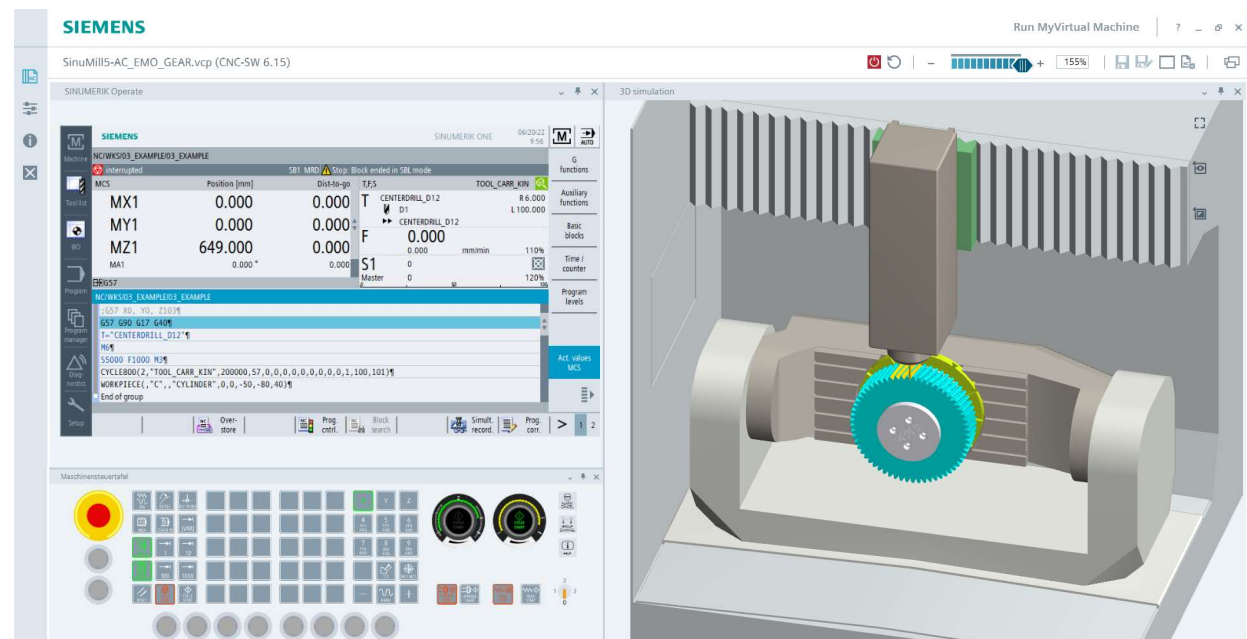
Collision detection
and analysis



Library with tools, clamping,
blanks



Ideal for trainings



Run MyVirtual Machine /SIMIT Connector

Runtime environment of virtual commissioning for machine user



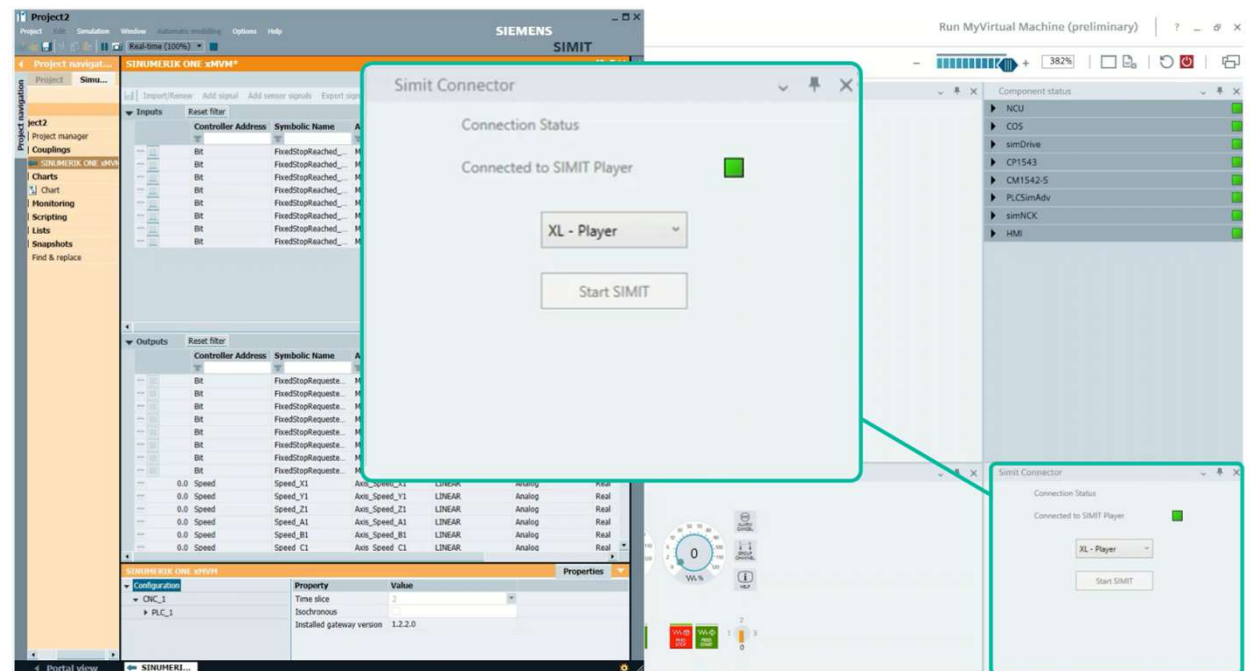
Behavior simulation of the complete machine including auxiliary units, specific control panels, etc.



Archiving of the SIMIT project into the Run MyVirtual Machine project (.vcp)



Operation but no modifications to the behavior models



Material removal and comprehensive collision detection with NX Machine Tool Simulation



NX Machine Tool Simulation

Integrated CAD-CAM-CNC chain with full scope of SINUMERIK “language”



Interaction with integrated virtual PLC (gripper, handler, tool change, etc.)



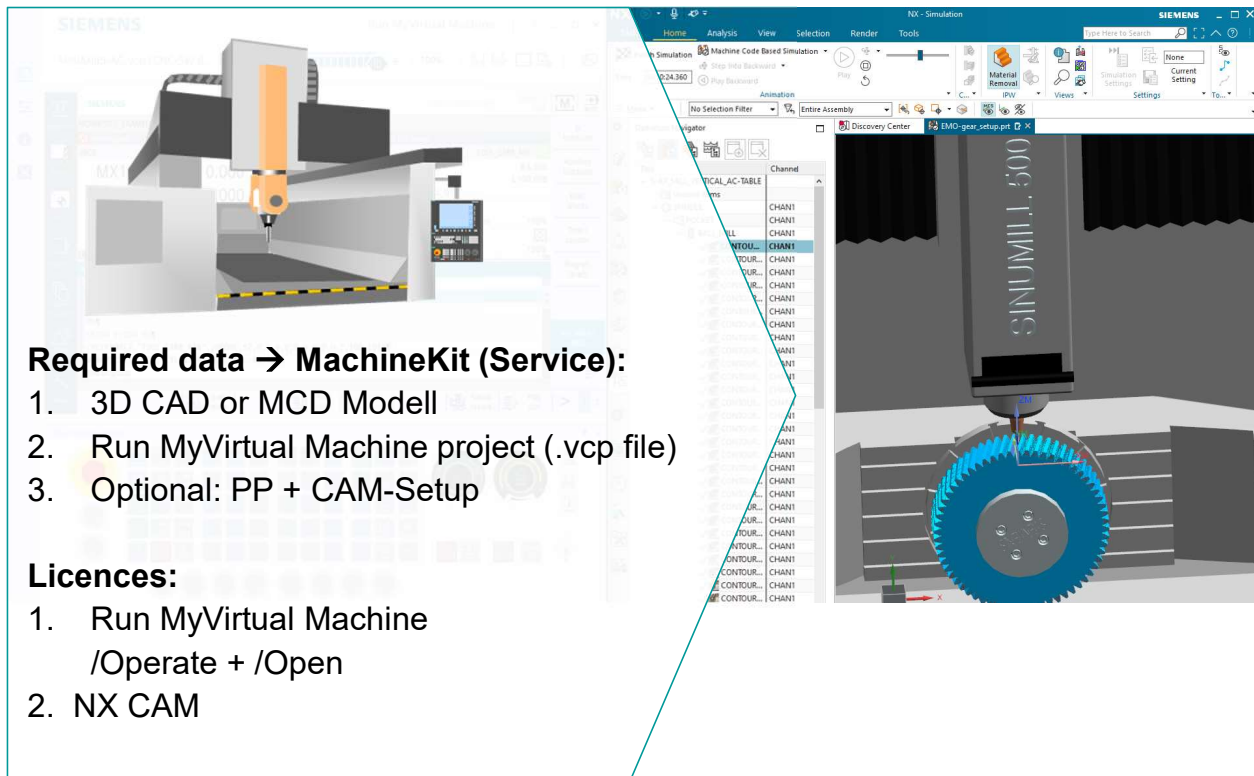
Build-in NC code editor and program management (cycles, and subprograms, etc.)



Machining time and machine status analysis (e.g. cutting and secondary times optimization)



Supporting numerous technologies (mill-turn, swiss-lathe, robotics, additive, etc.)



Required data → MachineKit (Service):

1. 3D CAD or MCD Modell
2. Run MyVirtual Machine project (.vcp file)
3. Optional: PP + CAM-Setup

Licences:

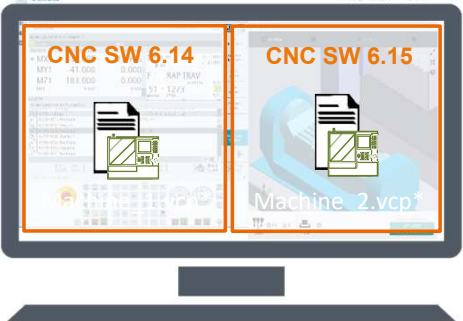
1. Run MyVirtual Machine /Operate + /Open
2. NX CAM

What is the Digital Twin and what is the software?

Machine Manufacturer

OEM A

Create MyVirtual Machine V1.1



OEM B

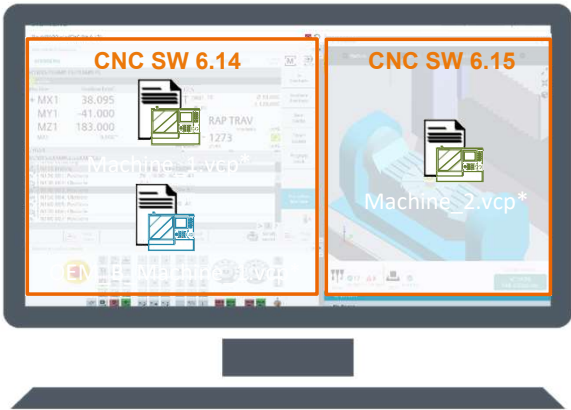
Create MyVirtual Machine V1.2



* virtual commissioning project – intellectual property of OEM
Create & Run MyVirtual Machine – software to create /execute vcp file

Machine User

Run MyVirtual Machine V1.x



- + One application for all projects and CNC software versions
- + Common database (vcp) for OEM, service and user

Create MyVirtual Machine (CMVM) vs. Run MyVirtual Machine (RMVM) Function differences

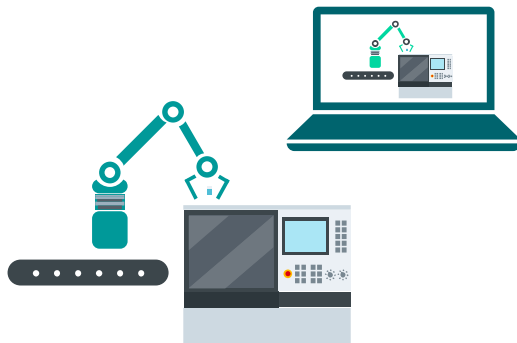
Functions	Create MyVirtual Machine	Run MyVirtual Machine	Explanation and applications
Project management			
• Creating new projects (VCP)	✓		Project for using in RMVM/CMVM
• Opening a project (VCP)	✓	✓	
• Using template machines	✓	✓	Siemens example machine projects included
• Save / Save as	✓	✓	Saves all project changes in the configuration
SINUMERIK access levels			
• Service and manufacturer access	✓		Changes to the machine data for commissioning
• Key-operated switches 1-3 + user access	✓	✓	3 access levels, e.g. editing programs and cycles
Settings and functions			
• NCU control board	✓		Displaying PLC status (Run, Stop, Error)
• Mechanical properties	✓		E.g. brake states and spindle pitch
• PLC input / output table	✓	✓	Input: toggle switches; output: LEDs for the PLC
• Projects settings	✓	✓	Information on the VCP project, e.g. GIV version, path
• Machine control panel	✓	✓	Machine operation (edit function only in CMVM)
Commissioning / diagnostics			
• PLC project upload from virtual control	✓		Loading the PLC project from CMVM to TIA project
• PLC project download from virtual control	✓		Downloading a created TIA project into CMVM
• Generating archives (.dsf)	✓		Exporting a NC archive for a real machine
• Reading in archives (.dsf)	✓		Reading in an NC archive of the real machine
• TIA Portal online connection and diagnostics	✓	✓	Online connection of virtual controller and TIA portal, e.g. for diagnostic of PLC blocks

| Use-Cases

Use of the digital twin in everyday business

Machine in delivery Faster start of production

Machine Manufacturer

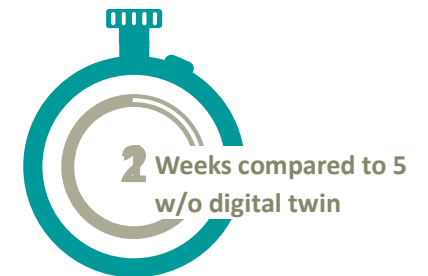
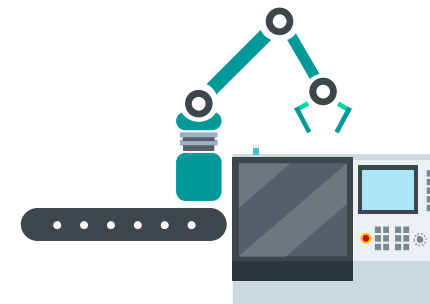
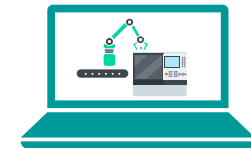


Delivery

Machine User

✓ Virtual preparation

⚙ Ramp-up time



✓ Regular interaction with machine buyer and pre-acceptance tests using the digital twin

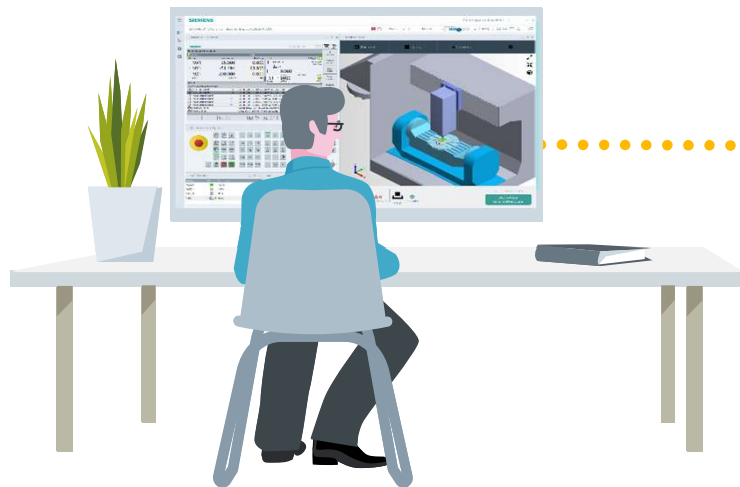
✓ Significant reduction of ramp-up time for machine user based on preparation on a virtual model

Machine in operation

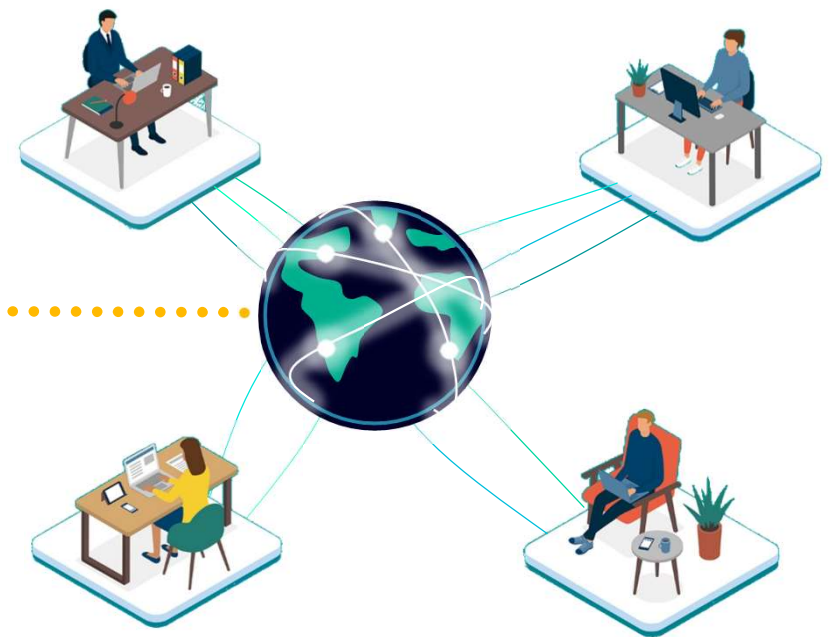
The digital twin as a training environment

Machine Manufacturer

- ✓ Time and location-independent training via Teams, Skype & Co.
- ✓ Safe training environment also for self-learning
- ✓ Learning without interrupting the machine or even production



Machine User

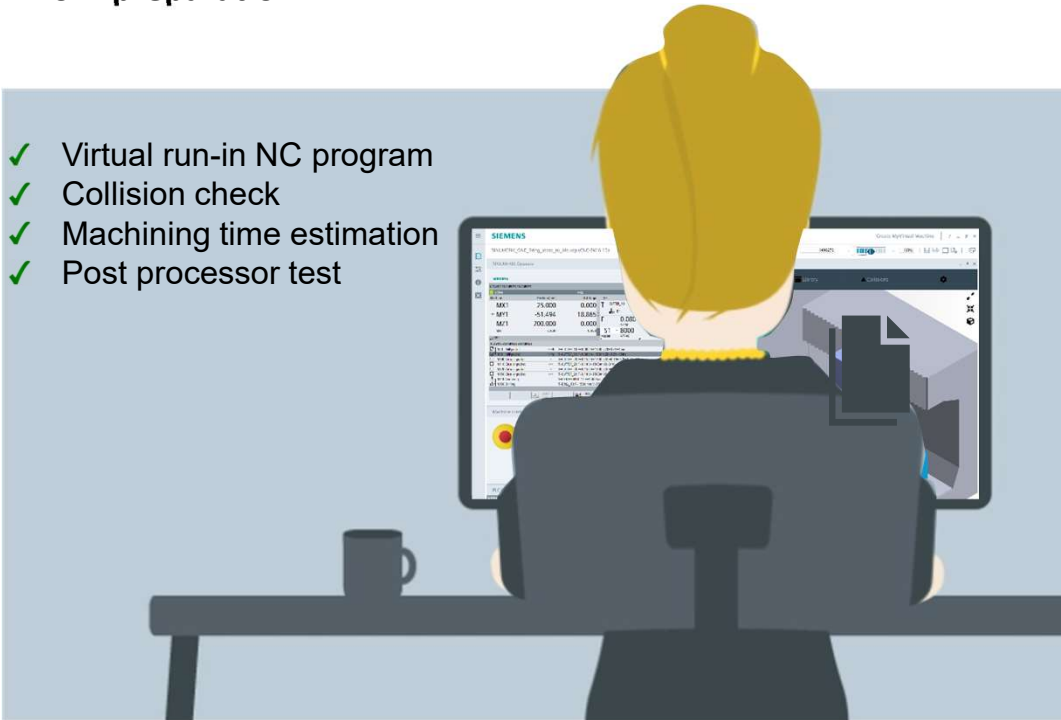


Machine operation

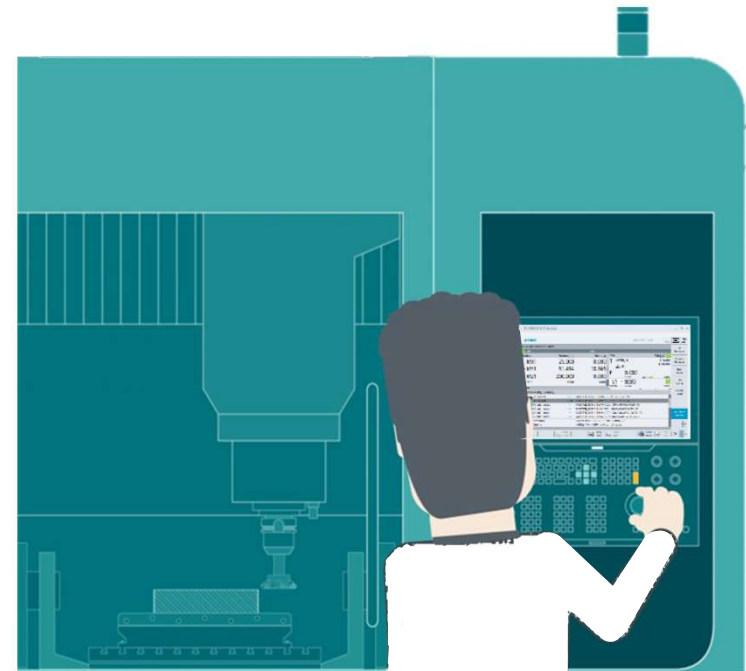
Export of a digital twin for work preparation

Work preparation

- ✓ Virtual run-in NC program
- ✓ Collision check
- ✓ Machining time estimation
- ✓ Post processor test



Work execution

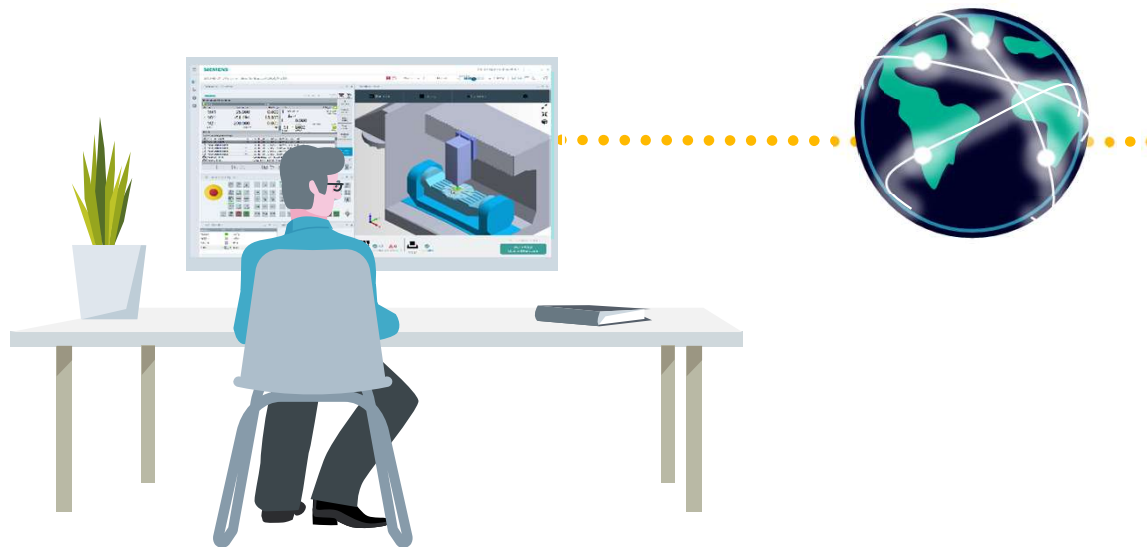


Machine in service

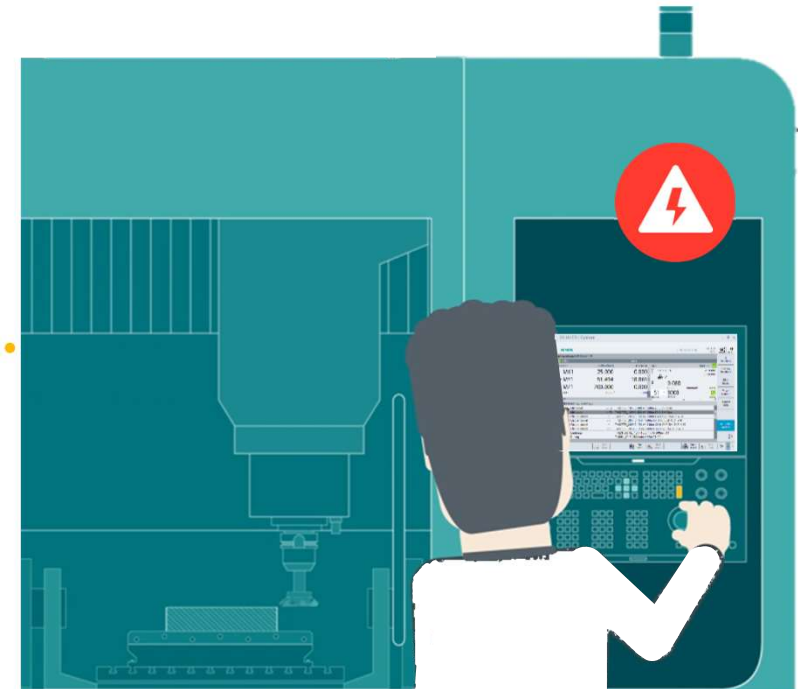
Reuse of digital twin for service and after sales

Machine Manufacturer

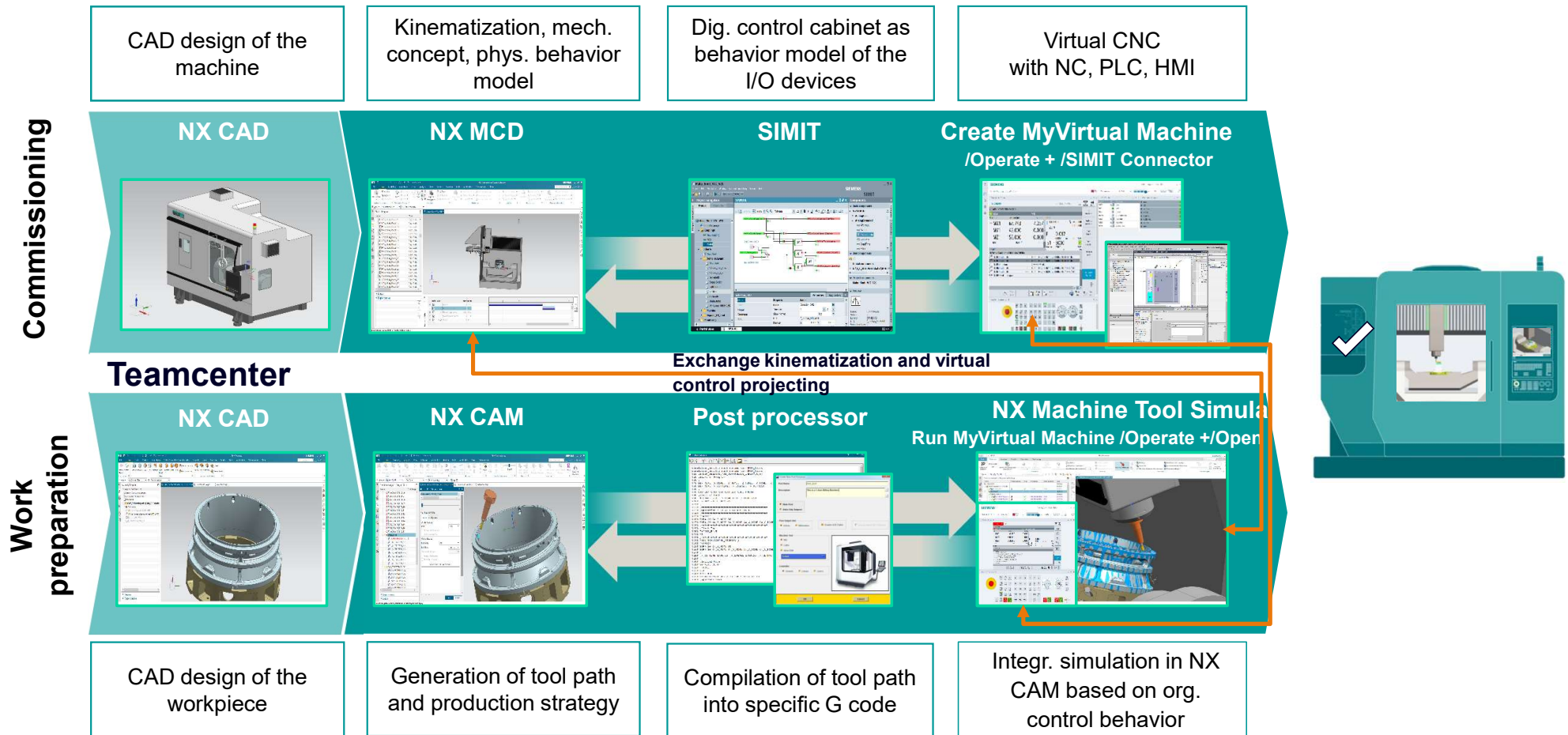
- ✓ Reuse existing machine model to reproduce customer's problem
- ✓ Aftersales: Evaluation of the implementation of subsequent customer requests with the help of the digital twin



Machine User



Value creation with the digital twins in machine engineering and operation



| Ordering data and logistics

Run MyVirtual Machine Ordering data

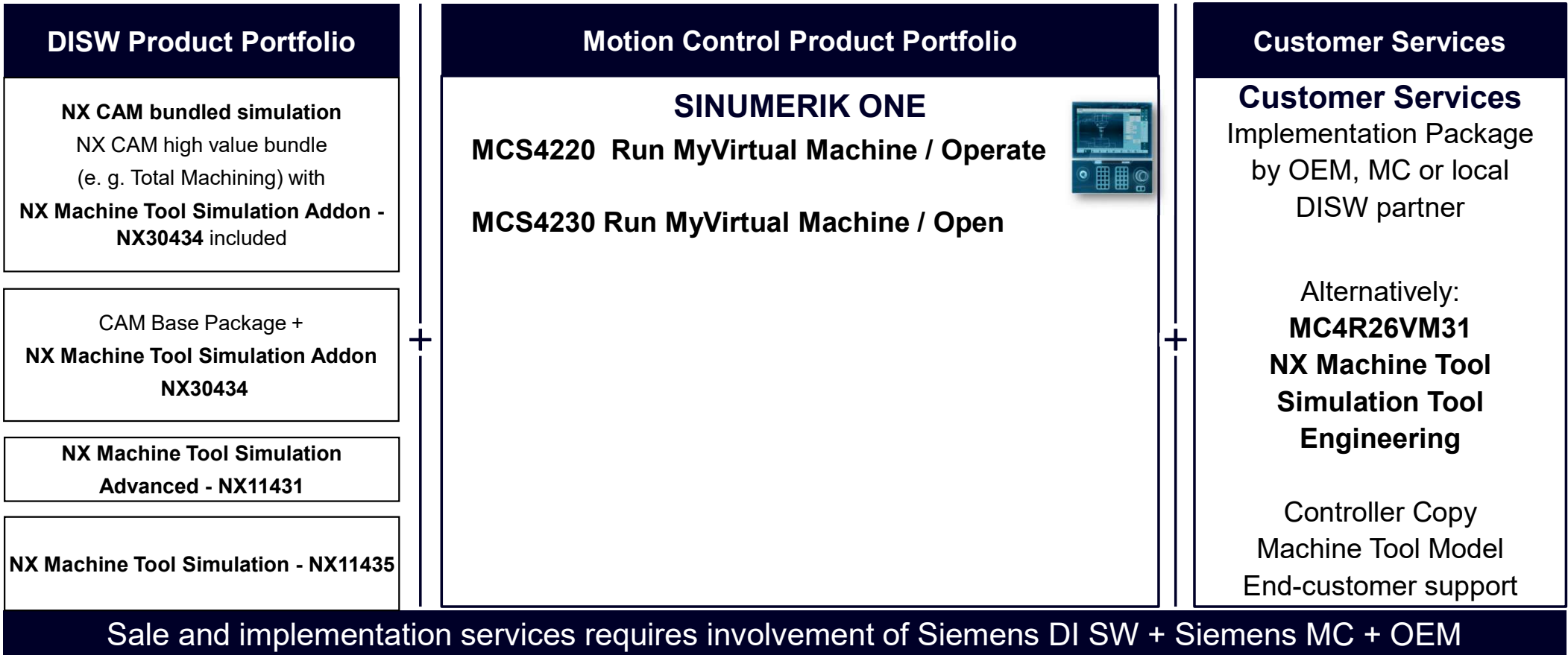
Product	License-type	Product-ID
Run MyVirtual Machine /Operate	Floating Academics ¹⁾	MCS4220 MCS4220a
Run MyVirtual Machine /Open	Floating Academics ¹⁾	MCS4230 MCS4230a
Run MyVirtual Machine /3D	Floating Academics ¹⁾	MCS4240 MCS4230a
Run MyVirtual Machine /SIMIT Connector	Floating Academics ¹⁾	MCS4075f MCS4075a

Floating: server based licenses, can be used with several working stations (not simultaneously). Recommend to order

¹⁾**Academics:** for non commercial use. Available as floating only

- For more information request detailed license description

NX Machine Tool Simulation Products, Services and Licenses – Virtual Controller



Disclaimer

© Siemens 2023

Subject to changes and errors. The information given in this document only contains general descriptions and/or performance features which may not always specifically reflect those described, or which may undergo modification in the course of further development of the products. The requested performance features are binding only when they are expressly agreed upon in the concluded contract.

All product designations may be trademarks or other rights of Siemens AG, its affiliated companies or other companies whose use by third parties for their own purposes could violate the rights of the respective owner.