

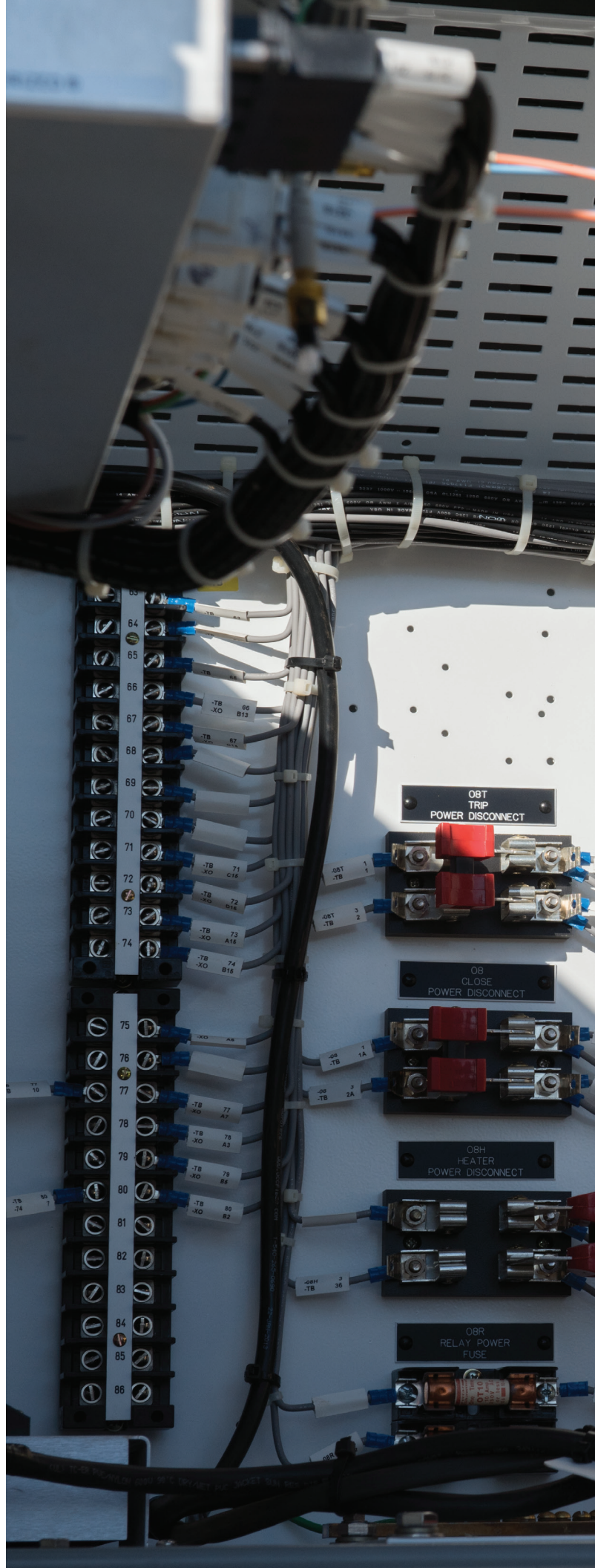
Siemens Industry, Inc.
7000 Siemens Road
Wendell, NC 27591

For more information, please contact
our Customer Support Center.
Phone: 1-800-333-7421

usa.siemens.com

Order No: EMTS-B40018-00-4AUS
Printed in USA
©2017 Siemens Industry, Inc.

The technical data presented in this document is based on an actual case or on as-designed parameters, and therefore should not be relied upon for any specific application and does not constitute a performance guarantee for any projects. Actual results are dependent on variable conditions. Accordingly, Siemens does not make representations, warranties, or assurances as to the accuracy, currency or completeness of the content contained herein. If requested, we will provide specific technical data or specifications with respect to any customer's particular applications. Our company is constantly involved in engineering and development. For that reason, we reserve the right to modify, at any time, the technology and product specifications contained herein.





SIEMENS

Ingenuity for life

Medium-Voltage Products and Services

From 5kV to 38kV

usa.siemens.com/assetservices

Product support for new and legacy equipment, retrofit solutions, and replacement circuit breakers for most OEM brands.

As the supplier of OEM parts for your Allis-Chalmers and Siemens medium-voltage switchgear and breakers, Siemens is committed to supporting you with qualified parts and factory trained field service support throughout your product's life cycle.

Siemens has a comprehensive database of drawings and manufacturing capabilities to fabricate a direct match. We design and manufacture all interfaces and extensions, including bus work and protection and control panels. Siemens' factory-trained field service technicians will work with you to install, connect, test, and commission the switchgear and match-in-line extension.

Medium-Voltage Vacuum Replacement Contactors

Medium-voltage vacuum replacement contactors provide a cost-effective way to upgrade your system capabilities to current vacuum technology while increasing equipment reliability and minimizing downtime. Siemens supports the Series 81000 controller product line and can provide replacement solutions for most 85H, 88H, 90H, 93H, 94H, 96H, 97H, and 98H contactor models.

Supporting

- New switchgear boasting the latest technology
- Medium-voltage motor controllers – 5kV to 15kV
- Add-on sections for legacy switchgear
- Replacement parts
- Replacement circuit breakers
- Replacement contactors
- Ground and test devices
- MV and LV circuit breakers to replace most brands
- Closed door racking solutions
- Training onsite or at our factory
- Service on medium- and low-voltage products
- Protection and control service and products

Support Capabilities

Outdoor Distribution Circuit Breakers

Brand/Type	Model	Operator	Current Availability				
			Spare Parts	Replacement Vacuum Breakers	Add-on Sections	Field Service	Training
Siemens (Vacuum)	SDV 7	3AH	✓	N/A	N/A	✓	✓
	SDV 6	3AH	✓	N/A	N/A	✓	✓
	SDV 5	3AH	✓	N/A	N/A	✓	✓
	SDV 4	GMI	✓	N/A	N/A	✓	✓
	SDV 3	GMI	✓	N/A	N/A	✓	✓
	SDV 2	3AF	✓	N/A	N/A	✓	✓
	SDV1	3AF	✓	N/A	N/A	✓	✓

AIS (Air-Insulated) Switchgear

Brand/Type	Model	Operator	Current Availability					
			Spare Parts	Replacement Circuit Breakers	Add-on Sections	Closed Door Racking Solutions	Field Service	Training
Siemens (Vacuum)	GM-SG	3AH	✓	✓	✓	✓	✓	✓
	GM	GMI	✓	✓	✓	✓	✓	✓
	H2	3AF	✓	✓	✓	✓	✓	✓
	NXAIR	3AF	✓	✓	✓	✓	✓	✓
Allis-Chalmers (All Air-Magnetic)	MA	515-1		✓		✓	✓	✓
	MC/MCV			✓		✓	✓	✓
	FA	515-2	Limited	✓			✓	✓
	FB	515-2	Limited	✓			✓	✓
	FC	515-2	Limited	✓			✓	✓
	VV1500	515-4v	Limited	✓			✓	✓
(Oil)	IV Gear						✓	✓
	I Gear						✓	✓
	F Gear			✓		✓	✓	✓
	D Gear			✓			✓	✓
	R Gear						✓	✓
	ME Gear						✓	✓
	L Gear						✓	✓
	H Gear						✓	✓

GIS (Gas-Insulated) Switchgear

Brand/Type	Model	Operator	Current Availability			
			Spare Parts	Add-on Modules		Field Service
Siemens (GIS)	8DA/B	8D	✓	✓		✓
	8DAJH	8D	✓	✓		✓

MVC (Medium-Voltage Control Centers)

Brand/Type	Model	Operator	Current Availability				
			Spare Parts	Replacement Vacuum Contactor	Add-on Sections	Field Service	Training
Siemens (Vacuum)	Simovac	3TL	✓	✓	✓	✓	✓
	Series 81000	97H	✓	✓ *	Transition to Simovac	✓	✓
		98H	✓	✓ *	Transition to Simovac	✓	✓
		88H	✓	✓ *	Transition to Simovac	✓	✓
		85H	✓	✓ *	Transition to Simovac	✓	✓
		90H	✓	✓ *	Transition to Simovac	✓	✓
		93H	✓	✓ *	Transition to Simovac	✓	✓
		94H	✓	✓ *	Transition to Simovac	✓	✓
		96H	✓	✓ *	Transition to Simovac	✓	✓

* Cell conversion kits are often needed to fit a new contactor into an old cell.

Siemens Technology

Protection and Control Upgrades

Many electric system operators need to modernize their protection and control systems in existing facilities. Siemens SIPROTEC® relays offer protection and control for transmission, generation, distribution, and industrial applications. Siemens can replace old relays with new SIPROTEC relays in the existing panels, or we can fabricate new panels. Siemens also provides the necessary engineering, documentation, relay settings, commissioning and aftermarket services to keep your equipment performing reliably and safely long after the equipment has been put in service.

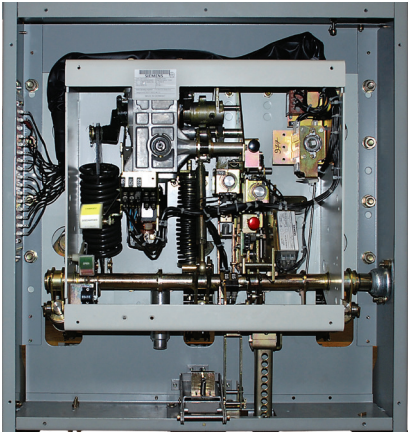
OEM-certified Parts and Components

Siemens maintains a multi-million-dollar inventory for rapid supply of many key components. Siemens supports not only current production products, but also legacy medium-voltage and high-voltage products (Allis-Chalmers, Siemens-Allis, Westinghouse, Merlin Gerin high-voltage products, Trafo Union, VA Tech, Elin, EBG , ETG, Peebles, and Ferranti-Packard).

Operating Mechanisms

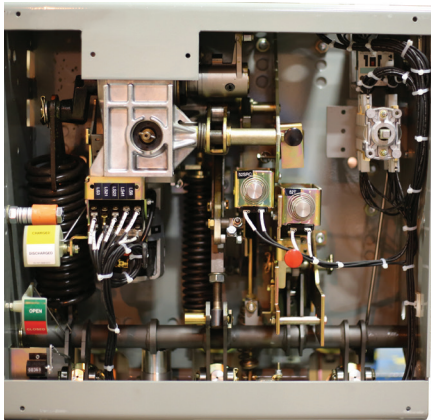
The 3AF/3AH mechanism comes equipped with a spring charge motor mechanism, which includes a lifetime lubricated gear box. Additionally, its superior construction includes roller bearings, bushings, and machined latches and cams.

3AF Operator



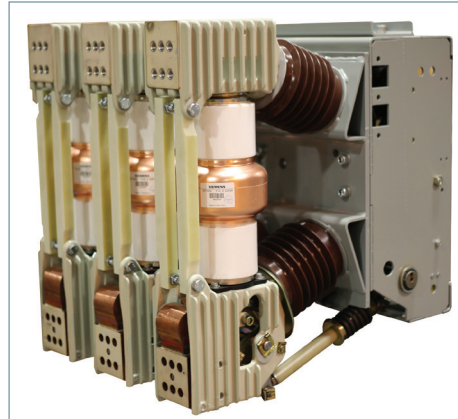
Used In	SDV1, SDV2, H2, NXAIR
Spare Parts	Are readily available
Maintenance Cycle	10,000 operations

3AH Operator

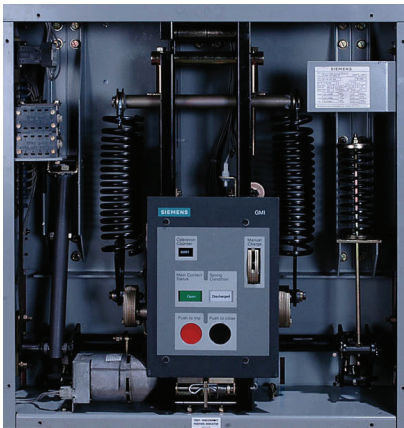


Used In	All Siemens MV Replacement Breakers, GMSG and SDV 5,6,7
Spare Parts	Are readily available
Maintenance Cycle	10,000 operations

The stored energy operating mechanism of the GMI circuit breaker is an integrated arrangement of springs, solenoids and mechanical devices designed to provide a number of critical functions. The energy necessary to close and open the contacts of the vacuum interrupters is stored in powerful tripping and closing springs. The closing springs are normally charged automatically, but there are provisions for manual charging. The operating mechanism that controls charging, closing, and tripping functions is fully trip-free, i.e., spring charging does not automatically change the position of the primary contacts, and the closing function may be overridden by the tripping function at any time.



GMI Operator



Used in	SDV 3, SDV4, GM
Spare Parts	Are readily available
Maintenance Cycle	5,000 operations

Vacuum Interrupters

Siemens vacuum interrupters are among the best in class in short-circuit breaking capacity. They offer:

- 30,000 circuit-breaker operation cycles
- 5 million operation cycles for contactors
- Maintenance-free service life
- Extremely high short-circuit breaking capacity
- High dielectric performance
- Very low chopping currents
- Minimal contact resistance

Our portfolio offers predictable and stable interruption over the entire product lifetime, even for extreme applications such as:

- Vibrating environments
- High and low frequencies
- Horizontal or vertical installation

In Siemens, you have a reliable and innovative partner with vast experience in vacuum switching technology:

- First patent in the 1930s
- More than 40 years of in-depth market experience
- In-house contact material production
- More than 5 million units installed in different applications throughout the world

Our vacuum interrupters are well established in all industries, including:

- Power utilities
- Steel mills
- Wind turbines
- Shipping
- Off-shore
- Railway

MV Roll-in Replacements

Roll-in replacement breakers provide a cost-effective way to upgrade to current vacuum technology while increasing equipment reliability and minimizing downtime. Siemens has designs for most major breaker models.

Why Replacement Breakers?

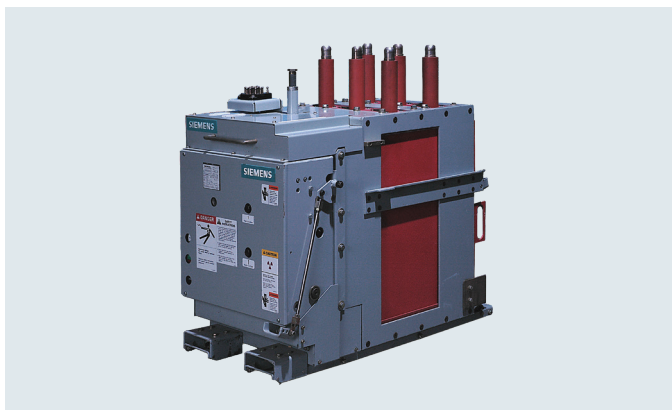
- Increased reliability and performance
- Reduced operating and maintenance expenditures
- Reduced downtime, minimal changeover time during upgrade
- Preserved investment in existing cubicles
- Improved employee and environmental safety

Why Siemens?

- *Long operational life*
Siemens replacement breakers have an expected life of 30,000 mechanical operations and a maintenance interval of 10 years or 10,000 mechanical operations, which far exceeds most operational requirements in industrial and utility applications.



Siemens DHR (replacement for Westinghouse DH)



Siemens GER (replacement for GE Magne-Blast)

The following circuit breakers are available as pre-engineered designs. Other manufacturers, models, and ratings can be engineered by Siemens.

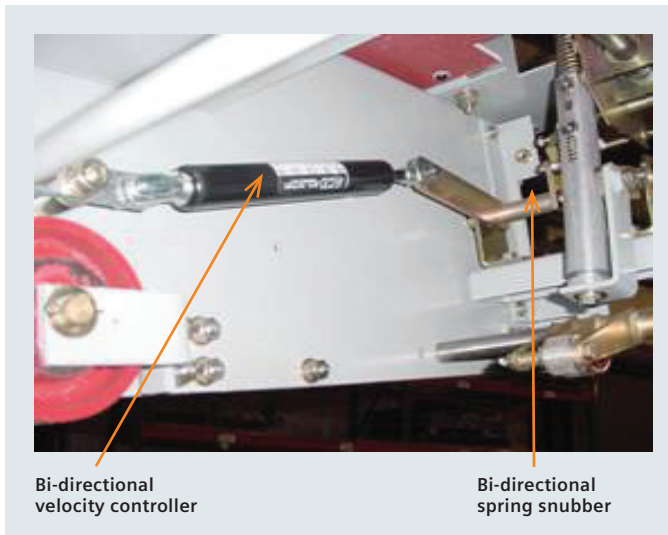
Manufacturer	Model	kV	Rating MVA	Amp
Allis-Chalmers (All Air-Magnetic)	AM	4.76	150	1,200, 2,000
			250	1,200, 2,000
	MB/MBV	8.25	250	1,200, 2,000
			500	1,200, 2,000
	MC/MCV	15	150	1,200
			250	1,200, 2,000
			500	1,200, 2,000
	MA	4.76	250	1,200, 2,000
			350	1,200, 2,000
	FA	4.76	350	3,000
	FB	8.25	500	1,200, 2,000, 3,000
	FC/FCV	15	500	1,200, 2,000
Siemens			750	1,200, 2,000, 3,000
			1,000	1,200, 2,000, 3,000
	3AF (2-High)	4.76	250	1,200, 2,000
			350	1,200, 2,000, 3,000
		8.25	500	1,200, 2,000, 3,000
		15	500	1,200, 2,000
			750	1,200, 2,000
			1,000	1,200, 2,000, 3,000
GE (All Air-Magnetic)	Magne-Blast (AMH)	4.76	250	600, 1,200, 2,000
	Magne-Blast (AM)	2.4	100	600, 1,200, 2,000
			150	600, 1,200, 2,000
		4.76	100	600, 1,200, 2,000
			150	600, 1,200, 2,000
			250	600, 1,200, 2,000
			350	1,200, 2,000, 3,000
		8.25	500	1,200, 2,000, 3,000
		15	250	1,200, 2,000
			500	1,200, 2,000
			750	1,200, 2,000
			1,000	1,200, 2,000, 3,000
Westinghouse	DH	4.76	150	1,200, 2,000
			250	1,200, 2,000
			350	3,000
		8.25	500	1,200, 2,000
		15	500	1,200, 2,000
			750	1,200, 2,000
			1,000	1,200, 2,000, 3,000
	DHP	4.76	250	1,200, 2,000
			350	1,200, 2,000
		8.25	500	1,200, 2,000, 2,500
		15	500	1,200, 2,000
			750, 750C	1,200, 2,000, 2,500
			1,000	1,200, 2,000, 2,500
ITE	HV	4.76	100	600, 1,200
			150	600, 1,200
			250	600, 1,200
	HK	4.76	250	1,200, 2,000
		8.25	500	1,200, 2,000
		15	500	1,200, 2,000
			750	1,200, 2,000
			1,000 (36" Cell)	1,200, 2,000
Federal Pacific	DST2	4.76	250 *	1,200, 2,000
		8.25	500	1,200, 2,000
		15	500	1,200, 2,000
			750	1,200, 2,000
McGraw Edison	MOP	27	1,000	1,200
	PSD	15	501	1,200
			502	2,000
			751	1,200

Technology Improvements

MOC Saver

Siemens patented MOC-Saver™ system addresses the various operational issues associated with replacing air-magnetic circuit breakers. The MOC-Saver system controls the velocity operating the original cubicle MOC system, thus mitigating the increased forces that would be applied to the cubicle MOC system.

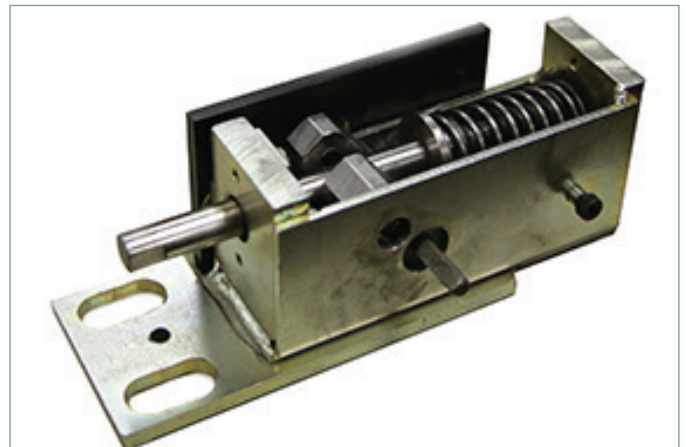
The MOC-Saver provides positive MOC switch actuation in the Open and Close directions. The MOC-Saver includes a bi-directional stored energy mechanism (snubber) and a bi-directional hydraulic velocity controller. Operation of the legacy MOC switches requires sufficient energy from the vacuum circuit breaker stored energy mechanism to reliably close the circuit breaker while not damaging the MOC system yet maintaining full interchangeability.



MOC Saver

52STA Actuator

The 52STA actuator originally supplied with the legacy GE Magna-Blast switchgear was designed to absorb the output forces generated by the legacy circuit breakers stored energy mechanism and protect the MOC switches. Unfortunately, after years of use, the original 52STA actuator may develop a tendency to bind and not reset the MOC switches as required. This binding, along with the significant force that is generated in the stored energy mechanism of modern circuit breakers can be a problem for equipment owners. Fortunately, Siemens has developed replacement 52STA actuator mechanisms to prevent potential problems associated with these known issues and incorporated it in their replacement circuit breakers for legacy GE Magne-Blast switchgear in the US market.



52STA Actuator

Universal SARRACS Racking Device

Switchgear Type	Integrated Motorized Racking	Closed Door Modification	Universal Racking Device	Remote SCADA Control
GM-SG	✓	✓	✓	✓
GM/GMI		✓	✓	
Allis-Chalmers D, F		✓	✓	

The universal racking device can be used with most medium- and low-voltage switchgear made by Siemens and other OEMs.

Unmatched control capabilities

The advanced Siemens PLC provides the control required to limit damage to the breaker or cell that can be caused by equipment misalignment and jamming. This allows for:

- Accurate detection of breaker positions requiring high or low torque.
- Precise position tracking and movement monitoring to .001 in.

Total flexibility – one unit can take on any breaker

- The breaker memory can be easily updated anytime a breaker is being racked.
- Simply adjust the elevation of the motor carriage to align the gear motor assembly to the racking mechanism on any manufacturer's breaker.

Get your operators up to speed in the shortest possible time, either at your facility or at one of our training centers. Siemens can provide professional training to ensure safe and efficient SARRACS operation.

Maximize Safety

Using the touch screen on the portable operator station, the racking procedures can be controlled from a distance of up to 75 ft.

Streamlining the Process Improves Racking Efficiency and Reduces Downtime

SARRACS shortens breaker racking times by as much as 50% over traditional techniques. In addition, it allows expenses for related safety equipment, including flash suits, to be kept to a minimum.

SARRACS uses a three-phase gear motor to provide the power needed for racking and a digital encoder for precise position control and sensing. An AC variable-frequency drive operates all speed adjustments, over current limits, and ramp functions.



Universal Racking

Closed Door Modification Racking

In order to improve operator safety, Siemens offers a field modification to convert Siemens switchgear to a closed-door, remote rack design. This modification provides a cost-effective solution to keep operators clear of the arc flash zone during breaker racking.

Allis-Chalmers and, later, Siemens manufactured types D and F medium-voltage switchgear from 1958 through the late 1980s. This gear utilized air-magnetic breakers that were typically manually racked via a lever while the cubicle panel door was open.

The field modification consists of a floor-mounted screw racking device, and a breaker-mounted bracket to interface with the floor-mounted screw device. These additions allow end-users to have either closed-door manual racking or closed-door remote racking.

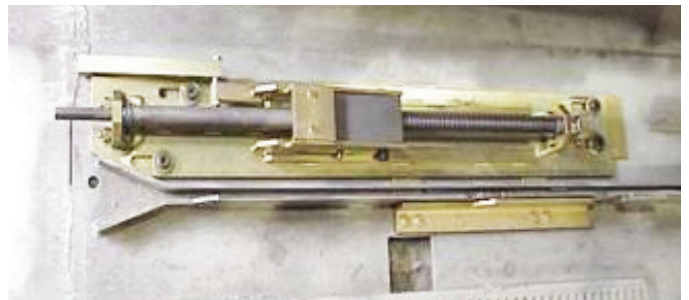
The closed-door remote racking option requires the above-mentioned cell and breaker additions, as well as a minor front panel modification, to accept a torque-regulated motor. The motor can be moved from one cell position to the next; thus, only one motor device is required.



GM-SG Integrated Electrical Racking

Siemens Integrated Electric-Racking System (SIERS) provides additional personnel protection against arc-flash exposure for operators by providing a means of remotely racking the drawout circuit breaker for Siemens types GM-SG non-arc-resistant 5kV-15kV, GM-SG-AR arc-resistant 5kV-15kV and GM38 non-arc-resistant 38 kV switchgear.

SIERS delivers a safe, easy-to-use, cost-effective, reliable, and flexible way to remotely rack a drawout circuit breaker while standing outside of the arc-flash zone. This reduces the need for personal protective equipment (PPE) per the NFPA-70E® standard.



Top view of racking screw

SIERS Type	Description
Basic	Each circuit breaker cell is equipped with an integrated, electric-racking system, which includes a fixed-mounted, high torque motor and logic control module, control-pendant connector powered by control power in the switchgear or an external supply (either 120 Vac or 125 Vdc) when necessary. Typically, one control pendant is supplied per lineup. Type SIERS integrated, electric-racking system – one per circuit breaker cell Control pendant – one per lineup.
Local HMI	Basic type plus local HMI panel PC interface with GM-SG, GM-SG-AR, or GM38 lineup(s) in the electrical room
Remote SCADA	Basic type plus custom interface with SCADA or other system

The universal racking device can be used with most medium- and low-voltage switchgear made by Siemens and other OEMs.

Notes

Notes