

# SIEMENS

Item: Compression Lug Kit HCPCLP  
 For Use With: HCP367V – HCP368V–HCP327VT – HCP328VT

Siemens Energy & Automation, Inc.  
 Bellefontaine, OH 43311 U.S.A.

© Siemens Energy & Automation, Inc. 1987

Page 1 of 2  
 Pc.No. 410346A01

## Installation Instructions

▲ DANGER

**Hazardous Voltage.**  
 Will Cause Death or Serious Injury.  
 Turn off and lock out all power supplying  
 this device before installing or removing  
 compression lug kits.

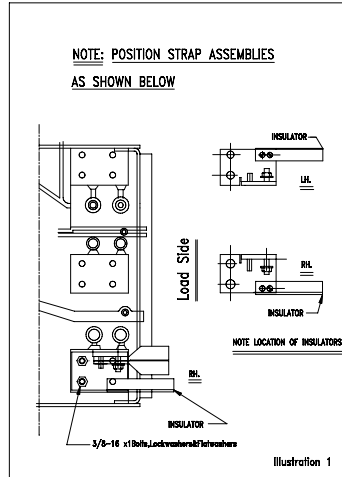
Replace all covers and shields before  
 power supplying this device is turned on.

TABLE 1	
RECOMMENDED TORQUE TIGHTING SPECS	
3/8–16	19 FT. LBS.

### SAFETY INSTRUCTIONS

NOTE: This instruction outlines the recommended installation procedure.

1. Turn off power ahead of device before installing lug kits.
2. Move switch handle to "off" position. Switch must be in "off" position before continuing
3. Open cover to install lugs and cable.
4. Assemble strap assemblies to line / load side terminals as shown on ILLUSTRATION 1 with (2) 3/8–16 x 1 long hex hd. bolts, lockwashers and flatwashers and tighten to specifications per TABLE 1.
5. Attach compression lugs to straps and tighten to specifications per table 1.



Siemens Energy & Automation, Inc.  
 Bellefontaine, OH 43311 U.S.A.

Page 2 of 2  
 Pc. No. 410346A01  
 ©1996 Siemens Energy & Automation

▲ DANGER

**Hazardous Voltage.**  
 Will Cause Death or Serious Injury.  
 Turn off and lock out all power supplying  
 this device before installing or removing  
 compression lug kits.

Replace all covers and shields before  
 power supplying this device is turned on.

## Installation Instructions

The following lugs are available for use with compression lug kit Cat. No. HCPCLP. Use of these lugs does not assure proper wire bending space. Wire bending space must be checked before installation. The (2) mounting holes are .38 diameter on 1.00 inch centers

ALUMINUM LUGS		
SIZE	BURNDY CAT. NO.	T&B CAT. NO.
2/0	YA26A5	60236
3/0	YA27A7	60242
4/0	YA28A7	60248
250 kcmil	YA29A5	60254
300 kcmil	YA30A5	60260
350 kcmil	YA31A5	60265
400 kcmil	YA32A5	60268
500 kcmil	YA33A5	60271

COPPER LUGS		
SIZE	BURNDY CAT. NO.	T&B CAT. NO.
2/0		54210
3/0		54211
4/0		54212
250 kcmil		54213
300 kcmil		54214
350 kcmil		54215
400 kcmil		54216
500 kcmil		54218
600 kcmil		54220