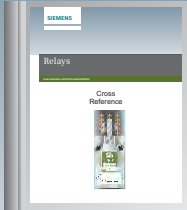


# Relay Products



**Relays**  
Manufacturer's Cross Reference  
**F-IND-1 - F-IND-14**



**ST-1 Series**  
Biased Neutral, Regular Release,  
Regular Pickup  
**F2 - F4**



**ST-1 Series**  
Biased Neutral, Regular Release,  
Slow Pickup  
**F5**



**ST-1 Series**  
Biased Neutral, Slow Release,  
Regular Pickup  
**F6 - F7**



**ST-1 Series**  
Lamp Control, Regular Release,  
Regular Pickup  
**F7**



**ST-1 Series**  
Neutral Lights Out, Regular Release,  
Regular Pickup  
**F8**



**ST-1 Series**  
Biased Neutral, Slow Release,  
Regular Pickup  
**F9 - F11**



**ST-1 Series**  
Biased Neutral, Switch Overload,  
Regular Release, Regular Pickup  
**F14**



**ST-1 Series**  
Biased Neutral, Slow Release,  
Regular Pickup  
**F14**



**ST-1 Series**  
Flasher  
**F14**



**ST-1 Series**  
Code Responsive  
**F15**



**ST-1 Series**  
Vane Track  
**F16**

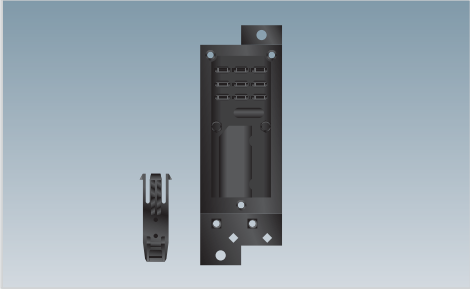


**ST-1 Series**  
Magnetic Stick

**F16**



**ST-1 Series**  
Power Transfer



**Accessories**  
Socket Bases, Terminal Inserts,  
Terminal Tabs

**F16**

**F18 - F20**

## Manufacturer's Cross Reference

Relay Products	SIEMENS Part Number	Contact Arrangement	Relay Type	Collective Coil Resistance (measured in $\Omega$ )	Ansaldo® STS Part Number (Formerly Branded As Union Switch and Signal)	Alstom® Part Number (Formerly Branded As General Railway Signal)
	US2:400000	6FB Silver/Carbon (Standard Duty)	ST-1, Single Base Non Biased Neutral Regular Release Regular Pickup	500 $\Omega$	N/A	A62-262
	US2:400001	6FB Silver/Carbon (Standard Duty)	ST-1, Single Base Non Biased Neutral Regular Release Regular Pickup	84 $\Omega$	N/A	A62-295
	US2:400002	4FB Silver/Carbon 2F Silver/Carbon 1B Silver (Standard Duty)	ST-1, Single Base Non Biased Neutral Regular Release Regular Pickup	1800 $\Omega$	N/A	A62-318
	US2:400003	4FB Silver/Carbon 2F Silver/Carbon 1B Silver (Standard Duty)	ST-1, Single Base Non Biased Neutral Regular Release Regular Pickup	900 $\Omega$	N/A	A62-308
	US2:400004	4FB Silver/Carbon 2F Silver/Carbon 1B Silver (Standard Duty)	ST-1, Single Base Non Biased Neutral Regular Release Regular Pickup	500 $\Omega$	N/A	A62-277
	US2:400005	6FB Silver/Carbon (Standard Duty)	ST-1, Single Base Non Biased Neutral Regular Release Regular Pickup	500 $\Omega$	N/A	A62-741
	US2:400006	4F Silver/Carbon 2B Silver (Standard Duty)	ST-1, Single Base Non Biased Neutral Regular Release Regular Pickup	350 $\Omega$	N/A	A62-300
	US2:400007	4FB Silver/Carbon 2F Silver/Carbon 1B Silver (Standard Duty)	ST-1, Single Base Non Biased Neutral Regular Release Regular Pickup	350 $\Omega$	N/A	A62-306
	US2:400008	4FB Silver/Carbon 2F Silver/Carbon 1B Silver (Standard Duty)	ST-1, Single Base Non Biased Neutral Regular Release Regular Pickup	500 $\Omega$	N/A	N/A

## Manufacturer's Cross Reference

SIEMENS Part Number	Contact Arrangement	Relay Type	Collective Coil Resistance (measured in $\Omega$ )	Ansaldo® STS Part Number (Formerly Branded As Union Switch and Signal)	Alstom® Part Number (Formerly Branded As General Railway Signal)	Relay Products
US2:400010	6FB Silver/Carbon (Standard Duty)	ST-1, Single Base Non Biased Neutral Track	4 $\Omega$	N/A	A62-261	
US2:400011	4FB Silver/Carbon 2F Silver/Carbon 1B Silver (Standard Duty)	ST-1, Single Base Non Biased Neutral Track	4 $\Omega$	N/A	A62-276	
US2:400012	4FB Silver/Carbon 2F Silver/Carbon 1B Silver (Standard Duty)	ST-1, Single Base Non Biased Neutral Track	1.8 $\Omega$	N/A	A62-275	
US2:400013	6FB Silver/Carbon (Standard Duty)	ST-1, Single Base Non Biased Neutral Track	1.8 $\Omega$	N/A	A62-260	
US2:400014	4FB Silver/Carbon 2F Silver/Carbon 1B Silver (Standard Duty)	ST-1, Single Base Non Biased Neutral Slow Release Regular Pickup	50 $\Omega$	N/A	A62-315	
US2:400015	4FB Silver/Carbon 2F Silver/Carbon 1B Silver (Standard Duty)	ST-1, Single Base Non Biased Neutral Regular Release Regular Pickup	100 $\Omega$	N/A	A62-319	
US2:400016	2FB Silver/Carbon (Standard Duty) 5F Silver/Carbon 1B Silver (Heavy Duty)	ST-1, Single Base Lamp Control Regular Release Regular Pickup	450/450 $\Omega$	N/A	N/A	
US2:400017	6FB Silver/Carbon (Standard Duty)	ST-1, Single Base Non Biased Neutral Regular Release Regular Pickup	900 $\Omega$	N/A	A62-296	
US2:400020	4FB Silver/Carbon 2F Silver/Carbon 1B Silver (Heavy Duty)	ST-1, Single Base Non Biased Neutral Regular Release Regular Pickup	500 $\Omega$	N/A	A62-310	

## Manufacturer's Cross Reference

Relay Products	SIEMENS Part Number	Contact Arrangement	Relay Type	Collective Coil Resistance (measured in $\Omega$ )	Ansaldo® STS Part Number (Formerly Branded As Union Switch and Signal)	Alstom® Part Number (Formerly Branded As General Railway Signal)
	US2:400021	2FB Silver/Carbon (Standard Duty) 2B Silver (Heavy Duty)	ST-1, Single Base Lamp Control Regular Release Regular Pickup	200 $\Omega$	N/A	A62-205
	US2:400022	4FB Silver/Carbon 2F Silver/Carbon 1B Silver (Heavy Duty)	ST-1, Single Base Non Biased Neutral Regular Release Regular Pickup	900 $\Omega$	N/A	A62-311
	US2:400023	6FB SCdO (Heavy Duty)	ST-1, Single Base Non Biased Neutral Regular Release Regular Pickup	500 $\Omega$	N/A	A62-580
	US2:400025	4FB SCdO (Heavy Duty)	ST-1, Single Base Switch Control Neutral Regular Release Regular Pickup	500 $\Omega$	N/A	A62-427
	US2:400026	6FB Silver/Carbon (Heavy Duty)	ST-1, Single Base Non Biased Neutral Regular Release Regular Pickup	900 $\Omega$	N/A	N/A
	US2:400027	4FB Silver/Carbon 2F Silver/Carbon 1B Silver (Heavy Duty)	ST-1, Single Base Non Biased Neutral Regular Release Regular Pickup	350 $\Omega$	N/A	A62-309
	US2:400028	6FB Silver/Carbon (Standard Duty)	ST-1, Single Base Non Biased Neutral Regular Release Regular Pickup	60 $\Omega$	N/A	A62-557
	US2:400029	4FB Silver 2F Silver 1B Silver (Heavy Duty)	ST-1, Single Base Non Biased Neutral Regular Release Regular Pickup	500 $\Omega$	N/A	N/A
	US2:400030	2FB Silver/Carbon 3F Silver/Carbon 3B Silver (Standard Duty)	ST-1, Single Base Non Biased Neutral Regular Release Regular Pickup	28.5 $\Omega$	N/A	**A62-325

## Manufacturer's Cross Reference

SIEMENS Part Number	Contact Arrangement	Relay Type	Collective Coil Resistance (measured in $\Omega$ )	Ansaldo® STS Part Number (Formerly Branded As Union Switch and Signal)	Alstom® Part Number (Formerly Branded As General Railway Signal)
US2:400031	4FB Silver/Carbon 2F Silver/Carbon 1B Silver (Standard Duty)	ST-1, Single Base Non Biased Neutral Regular Release Regular Pickup	84 $\Omega$	N/A	**A62-305
US2:400070	4FB Silver/Carbon 2F Silver/Carbon 1B Silver (Standard Duty)	ST-1, Single Base Non Biased Neutral Regular Release Regular Pickup	135/60 $\Omega$	N/A	**A62-335
US2:400100	6FB Silver/Carbon (Standard Duty)	ST-1, Single Base Non Biased Neutral Regular Release Slow Pickup	220 $\Omega$	N/A	A62-345
US2:400101	4FB Silver/Carbon 2F Silver/Carbon 1B Silver (Standard Duty)	ST-1, Single Base Non Biased Neutral Slow Release Slow Pickup	300 $\Omega$	N/A	A62-341
US2:400102	4FB Silver/Carbon 2F Silver/Carbon 1B Silver (Standard Duty)	ST-1, Single Base Non Biased Neutral Regular Release Slow Pickup	230 $\Omega$	N/A	**A62-340
US2:400200	4FB Silver/Carbon (Standard Duty)	ST-1, Single Base Non Biased Neutral Slow Release Regular Pickup	194 $\Omega$	N/A	A62-360
US2:400210	6FB Silver/Carbon (Standard Duty)	ST-1, Single Base Non Biased Neutral Slow Release Regular Pickup	194 $\Omega$	N/A	A62-359
US2:400211	4FB Silver/Carbon 2F Silver/Carbon 1B Silver (Standard Duty)	ST-1, Single Base Non Biased Neutral Slow Release Regular Pickup	194 $\Omega$	N/A	A62-357
US2:400212	4FB Silver/Carbon 2F Silver/Carbon 1B Silver (Standard Duty)	ST-1, Single Base Non Biased Neutral Slow Release Regular Pickup	194 $\Omega$	N/A	A62-358

## Manufacturer's Cross Reference

Relay Products	SIEMENS Part Number	Contact Arrangement	Relay Type	Collective Coil Resistance (measured in $\Omega$ )	Ansaldo® STS Part Number (Formerly Branded As Union Switch and Signal)	Alstom® Part Number (Formerly Branded As General Railway Signal)
	US2:400213	2FB Silver/Carbon (Standard Duty)	ST-1, Single Base Non Biased Neutral Slow Release Regular Pickup	460 $\Omega$	N/A	A62-353
	US2:400220	2F Silver/Carbon 4B Silver (Standard Duty)	ST-1, Single Base Non Biased Neutral Slow Release Regular Pickup	80 $\Omega$	N/A	A62-380
	US2:400221	2FB Silver/Carbon (Standard Duty)	ST-1, Single Base Non Biased Neutral Slow Release Regular Pickup	24 $\Omega$	N/A	A62-365
	US2:400300	4FB Silver/Carbon (Standard Duty)	ST-1, Single Base Non Biased Neutral Regular Release Regular Pickup	450/.12 $\Omega$	N/A	N/A
	US2:400301	6FB Silver/Carbon (Standard Duty)	ST-1, Single Base Non Biased Neutral Regular Release Regular Pickup	450/.2 $\Omega$	N/A	N/A
	US2:400302	4FB Silver/Carbon (Standard Duty)	ST-1, Single Base Non Biased Neutral Regular Release Regular Pickup	450/.069 $\Omega$	N/A	N/A
	US2:400303	4FB Silver/Carbon (Standard Duty)	ST-1, Single Base Non Biased Neutral Regular Release Regular Pickup	.24 $\Omega$	N/A	N/A
	US2:400305	4FB Silver/Carbon (Standard Duty)	ST-1, Single Base Non Biased Neutral Regular Release Regular Pickup	450/.45 $\Omega$	N/A	N/A
	US2:400400	4FB Silver/Carbon 2F Silver/Carbon 1B Silver (Standard Duty)	ST-1, Single Base Non Biased Neutral Slow Release Slow Pickup	194 $\Omega$	N/A	A62-350



## Manufacturer's Cross Reference

SIEMENS Part Number	Contact Arrangement	Relay Type	Collective Coil Resistance (measured in $\Omega$ )	Ansaldo® STS Part Number (Formerly Branded As Union Switch and Signal)	Alstom® Part Number (Formerly Branded As General Railway Signal)
US2:400500	6FB Silver/Carbon (Standard Duty)	ST-1, Single Base Biased Neutral Regular Release Regular Pickup	500 $\Omega$	N/A	A62-125
US2:400500-1	6FB Silver/Carbon (Standard Duty)	ST-1, Single Base Biased Neutral Regular Release Regular Pickup	2000 $\Omega$	N/A	N/A
US2:400501	6FB Silver/Carbon (Standard Duty)	ST-1, Single Base Biased Neutral Regular Release Regular Pickup	63 $\Omega$	N/A	A62-140
US2:400502	4FB Silver/Carbon 2F Silver/Carbon 1B Silver (Standard Duty)	ST-1, Single Base Biased Neutral Regular Release Regular Pickup	500 $\Omega$	N/A	A62-122
US2:400503	2FB Silver/Carbon 4F Silver/Carbon 2B Silver (Standard Duty)	ST-1, Single Base Biased Neutral Regular Release Regular Pickup	1000 $\Omega$	N/A	A62-552
US2:400504	4FB Silver/Carbon 2F Silver Carbon 1B Silver (Standard Duty)	ST-1, Single Base Biased Neutral Regular Release Regular Pickup	100 $\Omega$	N/A	A62-126
US2:400505	6FB Silver (Heavy Duty)	ST-1, Single Base Biased Neutral Regular Release Regular Pickup	500 $\Omega$	N/A	N/A
US2:400506	4FB Silver/Carbon 2F Silver/Carbon 1B Silver (Heavy Duty)	ST-1, Single Base Biased Neutral Regular Release Regular Pickup	500 $\Omega$	N/A	N/A
US2:400506-1	4FB Silver/Carbon 2F Silver/Carbon 1B Silver (Heavy Duty)	ST-1, Single Base Biased Neutral Regular Release Regular Pickup	2000 $\Omega$	N/A	N/A

## Manufacturer's Cross Reference

Relay Products	SIEMENS Part Number	Contact Arrangement	Relay Type	Collective Coil Resistance (measured in $\Omega$ )	Ansaldo® STS Part Number (Formerly Branded As Union Switch and Signal)	Alstom® Part Number (Formerly Branded As General Railway Signal)
	US2:400507	5F Silver/Carbon 4B Silver (Standard Duty)	ST-1, Single Base Biased Neutral Regular Release Regular Pickup	4 $\Omega$	N/A	A62-637
	US2:400508	5F Silver/Carbon 4B Silver (Standard Duty)	ST-1, Single Base Biased Neutral Regular Release Regular Pickup	1 $\Omega$	N/A	A62-639
	US2:400509	2FB Silver/Carbon 4F Silver/Carbon 2B Silver (Heavy Duty)	ST-1, Single Base Biased Neutral Regular Release Regular Pickup	2100 $\Omega$	N/A	A62-665
	US2:400509-M	2FB Silver/Carbon 4F Silver/Carbon 2B Silver (Heavy Duty)	ST-1, Single Base Biased Neutral Regular Release Regular Pickup	2100 $\Omega$	N/A	N/A
	US2:400509-K	2FB Silver/Carbon 4F Silver/Carbon 2B Silver (Heavy Duty)	ST-1, Single Base Biased Neutral Regular Release Regular Pickup	2100 $\Omega$	N/A	N/A
	US2:400510	4FB Silver/Carbon 2F Silver/Carbon 1B Silver (Standard Duty)	ST-1, Single Base Biased Neutral Regular Release Regular Pickup	2 $\Omega$	N/A	A62-120
	US2:400511	4FB Silver/Carbon (Standard Duty)	ST-1, Single Base Biased Neutral	.5 $\Omega$	N/A	A62-118
	US2:400512	6FB Silver/Carbon (Standard Duty)	ST-1, Single Base Biased Neutral Regular Release Regular Pickup	2 $\Omega$	N/A	A62-654
	US2:400513	2FB Silver/Carbon 3F Silver/Carbon 3B Silver (Standard Duty)	ST-1, Single Base Biased Neutral Regular Release Regular Pickup	1000 $\Omega$	N/A	A62-722



## Manufacturer's Cross Reference

SIEMENS Part Number	Contact Arrangement	Relay Type	Collective Coil Resistance (measured in $\Omega$ )	Ansaldo® STS Part Number (Formerly Branded As Union Switch and Signal)	Alstom® Part Number (Formerly Branded As General Railway Signal)
US2:400515	5F Silver/Carbon 4B Silver (Standard Duty)	ST-1, Single Base Biased Neutral *	.5 $\Omega$	N/A	A62-633
US2:400516	6FB Silver/Carbon (Standard Duty)	ST-1, Single Base Biased Neutral Regular Release Regular Pickup	800 $\Omega$	322500-702	N/A
US2:400517	4FB Silver/Carbon (Standard Duty)	ST-1, Single Base Biased Neutral **	2000 $\Omega$	N/A	N/A
US2:400518	4FB Silver/Carbon (Standard Duty)	ST-1, Single Base Biased Neutral **	2 $\Omega$	N/A	N/A
US2:400519	2FB Silver/Carbon 4F Silver/Carbon 2B Silver (Standard Duty)	ST-1, Single Base Biased Neutral Regular Release Regular Pickup	2100 $\Omega$	N/A	N/A
US2:400520	2F SCdO 2B SCdO Mag Blowout (Extra Heavy Duty)	ST-1, Single Base Biased Neutral ***	500 $\Omega$	N/A	A62-429
US2:400520-1	2F SCdO 2B SCdO Mag Blowout (Extra Heavy Duty)	ST-1, Single Base Biased Neutral Regular Release Regular Pickup ***	1000 $\Omega$	N/A	N/A
US2:400521	6FB Silver/Carbon (Standard Duty)	ST-1, Single Base Biased Neutral Regular Release Regular Pickup	4 $\Omega$	N/A	A62-682
US2:400522	4FB Silver/Carbon 2F Silver/Carbon 1B Silver (Standard Duty)	ST-1, Single Base Biased Neutral Regular Release Regular Pickup	.5 $\Omega$	N/A	A62-646

\* Track relay high D.A. / P.V. ratio .5  $\Omega$ 

\*\* High D.A. / P.V. ratio

\*\*\* Switch control, regular release, regular pickup

## Manufacturer's Cross Reference

Relay Products	SIEMENS Part Number	Contact Arrangement	Relay Type	Collective Coil Resistance (measured in $\Omega$ )	Ansaldo® STS Part Number (Formerly Branded As Union Switch and Signal)	Alstom® Part Number (Formerly Branded As General Railway Signal)
	US2:400523	2F SCdO Mag Blowout (Extra Heavy Duty) 1F SCdO 2B SCdO	ST-1, Single Base Biased Neutral Regular Release Regular Pickup	500 $\Omega$	N/A	N/A
	US2:400524	4FB Silver 2F Silver 1B Silver (Heavy Duty)	ST-1, Single Base Biased Neutral Regular Release Regular Pickup	500 $\Omega$	N/A	N/A
	US2:400525	4FB Silver/Carbon 2F Silver/Carbon 1B Silver (Heavy Duty)	ST-1, Single Base Biased Neutral Regular Release Regular Pickup	375 $\Omega$	N/A	A62-131
	US2:400526	2FB Silver/Carbon 4F Silver/Carbon 2B Silver/Carbon (Heavy Duty)	ST-1, Single Base Biased Neutral Regular Release Regular Pickup	100 $\Omega$	N/A	A62-608
	US2:400527	6FB Silver/Carbon (Standard Duty)	ST-1, Single Base Biased Neutral Regular Release Regular Pickup	100 $\Omega$	N/A	A62-543
	US2:400528	6FB Silver/Carbon (Standard Duty)	ST-1, Single Base Biased Neutral Regular Release Regular Pickup	400 $\Omega$	322500-701	N/A
	US2:400529	4FB Silver/Carbon (Heavy Duty) 2FB Silver (Standard Duty)	ST-1, Single Base Biased Neutral Regular Release Regular Pickup	400 $\Omega$	322505-701	N/A
	US2:400530	6FB Silver/Carbon (Standard Duty)	ST-1, Single Base Biased Neutral Slow Release Regular Pickup	194 $\Omega$	322503-702	N/A
	US2:400531	4FB Silver/Carbon 2F Silver/Carbon 1B Silver (Standard Duty)	ST-1, Single Base Biased Neutral Regular Release Regular Pickup	750 $\Omega$	N/A	A62-132

## Manufacturer's Cross Reference

SIEMENS Part Number	Contact Arrangement	Relay Type	Collective Coil Resistance (measured in $\Omega$ )	Ansaldo® STS Part Number (Formerly Branded As Union Switch and Signal)	Alstom® Part Number (Formerly Branded As General Railway Signal)
US2:400532	6FB Silver/Carbon (Standard Duty)	ST-1, Single Base Biased Neutral Regular Release Regular Pickup	2 $\Omega$	322501-701	N/A
US2:400533	6FB Silver/Carbon (Standard Duty)	ST-1, Single Base Biased Neutral Regular Release Regular Pickup	250 $\Omega$	N/A	A62-549
US2:400534	6FB Silver/Carbon (Standard Duty)	ST-1, Single Base Biased Neutral Regular Release Regular Pickup	1 $\Omega$	N/A	**A62-550
US2:400535	4FB Silver/Carbon 2F Silver/Carbon 1B Silver (Standard Duty)	ST-1, Single Base Biased Neutral Regular Release Regular Pickup	63 $\Omega$	N/A	**A62-130
US2:400540	6FB Silver/Carbon (Standard Duty)	ST-1, Single Base Biased Neutral Regular Release Slow Pickup	800 $\Omega$	N/A	N/A
US2:400559	2FB Silver/Carbon 6F Silver (Heavy Duty)	ST-1, Single Base Biased Neutral Regular Release Regular Pickup	2100 $\Omega$	N/A	N/A
US2:400600	2B Silver Mag Blowout (Extra Heavy Duty)	ST-1, Single Base Switch Overload Rating 12A High Volt Machine	.068/1225 $\Omega$	N/A	A62-432
US2:400601	2CBO Silver/Carbon (Extra Heavy Duty)	ST-1, Single Base Switch Overload Rating 18A Low Volt Machine	.064/135 $\Omega$	N/A	A62-430
US2:400602	2CBO Silver/Carbon (Extra Heavy Duty)	ST-1, Single Base Switch Overload 11.5A	.068/220 $\Omega$	N/A	A62-545

## Manufacturer's Cross Reference

Relay Products	SIEMENS Part Number	Contact Arrangement	Relay Type	Collective Coil Resistance (measured in $\Omega$ )	Ansaldo® STS Part Number (Formerly Branded As Union Switch and Signal)	Alstom® Part Number (Formerly Branded As General Railway Signal)
	US2:400604	2CBO Silver/Carbon (Extra Heavy Duty)	ST-1, Single Base Switch Overload Rating 7.5A	.125/135 $\Omega$	N/A	N/A
	US2:400605	2CBO Silver/Carbon (Extra Heavy Duty)	ST-1, Single Base Switch Overload Rating 12A High Voltage Machine	.064/135 $\Omega$	N/A	A62-431
	US2:400605-1	2CBO Silver/Carbon (Extra Heavy Duty)	ST-1, Single Base Switch Overload Regular Release Regular Pickup	.064/540 $\Omega$	N/A	N/A
	US2:400700	4FB SCdO (Standard Duty)	ST-1, Single Base Flasher	60 $\Omega$	N/A	A62-577
	US2:400700-XX	4FB SCdO (Standard Duty)	ST-1, Single Base Flasher	240 $\Omega$	N/A	N/A
	US2:400700-1X	4FB SCdO (Standard Duty)	ST-1, Single Base Flasher	240 $\Omega$	N/A	N/A
	US2:400700-7X	4FB SCdO (Standard Duty)	ST-1, Single Base Flasher	60 $\Omega$	N/A	A62-197
	US2:400800	6FB Silver (Heavy Duty)	ST-1, Single Base Power Transfer Neutral Regular Release Regular Pickup	100/100 $\Omega$	N/A	A62-406
	US2:400800-X	6FB Silver (Heavy Duty)	ST-1, Single Base Power Transfer Neutral Regular Release Regular Pickup	100/100 $\Omega$	N/A	N/A

## Manufacturer's Cross Reference

SIEMENS Part Number	Contact Arrangement	Relay Type	Collective Coil Resistance (measured in $\Omega$ )	Ansaldo® STS Part Number (Formerly Branded As Union Switch and Signal)	Alstom® Part Number (Formerly Branded As General Railway Signal)
US2:400801	6FB Silver/Carbon (Heavy Duty)	ST-1, Single Base Power Transfer Neutral Regular Release Regular Pickup	100/100 $\Omega$	N/A	A62-579
US2:400801-X	6FB Silver/Carbon (Heavy Duty)	ST-1, Single Base Power Transfer Neutral Regular Release Regular Pickup	100/100 $\Omega$	N/A	N/A
US2:400802	6FB Silver (Heavy Duty)	ST-1, Single Base Power Transfer Neutral Regular Release Regular Pickup	100/100 $\Omega$	N/A	A62-579
US2:400802-X	6FB Silver (Heavy Duty)	ST-1, Single Base Power Transfer Neutral Regular Release Regular Pickup	100/100 $\Omega$	N/A	N/A
US2:400900	4NR Silver/Carbon (Standard Duty)	ST-1, Single Base Magnetic Stick Regular Pickup	500 $\Omega$	N/A	N/A
US2:400901	2NR Silver/Platinum (Standard Duty)	ST-1, Single Base Magnetic Stick Regular Pickup	26/26 $\Omega$	N/A	N/A
US2:400904	4NR Silver/Carbon (Standard Duty)	ST-1, Single Base Magnetic Stick Regular Pickup	7 $\Omega$	N/A	N/A
US2:400950	2FG Tungsten 2F Silver/Platinum 2B Tungsten (Standard Duty)	ST-1, Single Base Code Responsive	200 $\Omega$	N/A	N/A
US2:400951	4FB Tungsten (Standard Duty)	ST-1, Single Base Code Responsive	80 $\Omega$	N/A	A62-622

Relay Products

## Manufacturer's Cross Reference

Relay Products	SIEMENS Part Number	Contact Arrangement	Relay Type	Collective Coil Resistance (measured in $\Omega$ )	Ansaldo® STS Part Number (Formerly Branded As Union Switch and Signal)	Alstom® Part Number (Formerly Branded As General Railway Signal)
	US2:400952	2NR Silver/Platinum (Standard Duty)	ST-1, Single Base Code Responsive	22/22 $\Omega$	N/A	A62-600
	US2:400953	2FB Tungsten 2FB Silver/Platinum (Standard Duty)	ST-1, Single Base Code Responsive	80 $\Omega$	N/A	A62-598
	US2:400954	4FB Silver/Tungsten (Standard Duty)	ST-1, Single Base Code Responsive	80 $\Omega$	N/A	N/A
	US2:400955	4FB Silver/Platinum (Standard Duty)	ST-1, Single Base Code Responsive	80 $\Omega$	N/A	A62-157
	US2:400956	2F Tungsten 2B Silver/Platinum (Standard Duty)	ST-1, Single Base Code Responsive	200 $\Omega$	N/A	A62-595
	US2:400957	2FB Tungsten 2FB Silver/Platinum (Standard Duty)	ST-1, Single Base Code Responsive	200 $\Omega$	N/A	N/A
	US2:450000	12FB Silver/Carbon (Standard Duty)	ST-1, Single Base Neutral Regular Release Regular Pickup	500 $\Omega$	N/A	N/A
	US2:450001	8FB Silver/Carbon 2F Silver/Carbon Silver/Carbon (Extra Heavy Duty)	ST-1, Single Base Neutral Regular Release Regular Pickup	330 $\Omega$	N/A	N/A
	US2:450200	12FB Silver/Carbon (Heavy Duty)	ST-2, Double Base Neutral Slow Release Regular Pickup	260 $\Omega$	N/A	N/A
	US2:450300	8FB Silver/Carbon 4F Silver/Carbon 2B Silver (Heavy Duty)	ST-2, Double Base Biased Neutral Regular Release Slow Pickup	800 $\Omega$	N/A	N/A

## Manufacturer's Cross Reference

SIEMENS Part Number	Contact Arrangement	Relay Type	Collective Coil Resistance (measured in $\Omega$ )	Ansaldo® STS Part Number (Formerly Branded As Union Switch and Signal)	Alstom® Part Number (Formerly Branded As General Railway Signal)
US2:450500	12FB Silver/Carbon (Standard Duty)	ST-2, Double Base Biased Neutral Regular Release Regular Pickup	350 $\Omega$	N/A	A62-150
US2:450501	8FB Silver/Carbon 4F Silver/Carbon 2B Silver (Standard Duty)	ST-2, Double Base Biased Neutral Regular Release Regular Pickup	350 $\Omega$	N/A	A62-145
US2:450502	8FB Silver/Carbon 4F Silver/Carbon 2B Silver (Standard Duty)	ST-2, Double Base Biased Neutral Regular Release Regular Pickup	800 $\Omega$	N/A	N/A
US2:450900	6NR Silver/Carbon (Heavy Duty)	ST-2, Double Base Polar Regular Release Regular Pickup	250 $\Omega$	N/A	A62-609
US2:450901	8FB Silver/Carbon (Heavy Duty)	ST-2, Double Base Polar Regular Release Regular Pickup	500 $\Omega$	N/A	A62-391
US2:450902	4NR Silver/Carbon 2FB Silver/Carbon 2F Silver (Heavy Duty)	ST-2, Double Base Polar Regular Release Regular Pickup	250 $\Omega$	N/A	A62-585
US2:450992	4F Silver/Carbon 4B Silver (Standard Duty)	ST-2, Double Base Vane Track Relay	Track .524 $\Omega$ Local 144 $\Omega$	N/A	A62-547
US2:450993	4F Silver/Carbon 4B Silver (Standard Duty)	ST-2, Double Base Vane Track Relay	Track .4 $\Omega$ Local 67 $\Omega$	N/A	A62-597
US2:450994	2F Silver/Carbon 2B Silver (Standard Duty)	ST-2, Double Base Vane Track Relay	Track 5 $\Omega$ Local 144 $\Omega$	N/A	A62-548
US2:450994-N	2F Silver/Carbon 2B Silver (Standard Duty)	ST-2, Double Base Vane Track Relay	Track 5 $\Omega$ Local 144 $\Omega$	N/A	N/A



## ST Series

### Vital Relays

#### Overview



**SIEMENS ST-1 frame relay** shown for reference purposes only! Actual unit selected may vary in mounting and features.

**SIEMENS ST Series Vital Relays** are compact plug-in circuit switching elements housed within a clear polycarbonate case for use in modern railway systems. These relays incorporate the required control characteristics as well as operating security for this application. ST-1 and ST-2 relays fit into size 1 and 2 sockets already in use commonly throughout the industry and select models are interchangeable with other manufacturers' existing types of relays as well.

Each relay carries a relay registration plate unique to that specific type. Sockets have like indexing pins to ensure insertion of the proper relay for each circuit function. All contact and coil connections are brought out through the base of the relay as spring prongs. The socket has wedge shaped plug insulators with flat metal terminals on both the upper and lower surfaces.

Relays are guided into the socket by two rods so that each pair of prongs engage their respective socket terminals, making a firm, low resistance contact. The socket terminals are available in either the solder or crimp types. Terminals are easily removed from the back of the socket for making wiring changes without unplugging the relay.

- Available in both ST-1 and ST-2 frame sizes
- Mounts easily in existing socket bases
- All ferrous metal parts are nickle plated
- All contacts are rated for 4 Amps / 30 Volts
- Meets or exceeds all applicable AREMA® specifications
- Contact support springs are phosphorous bronze, molded in phenolic blocks. Relays are provided with space for three such blocks.
- Normally open or front contacts are fine silver to silver impregnated carbon
- Normally closed or back contacts are fine silver to fine silver.
- Regular, heavy duty, extra heavy duty; tungsten, and magnetic arc suppressed contacts are available.
- Heavy armature provides for positive drop-away.
- Highly efficient magnetic structure, making routine calibration quick and easy.

*Neutral Relay, Regular Release and Regular Pickup*

SIEMENS Part Number	Contact Arrangement	Relay Type	Drop Away Current	Pickup / Working Current	Resistance / Tolerance	Relay Register Plate	Weight	Relay Products
US2:400000	6FB 4 A @ 30 V Standard Duty	ST-1 Line	5.7 mA 2.85 V Minimum	12.1 mA 6.05 V Maximum	10 - 12 VDC (2) Coils @ 250 $\Omega$ $\pm$ 5% Resistance Each Coil	1 - 2 - 9 - 14	8.0 lbs (3.63 kgs)	
US2:400001	6FB 4 A @ 30 V Standard Duty	ST-1 Line	8.4 mA 0.71 V Minimum	19.5 mA 1.64 V Maximum	25 - 30 VDC (2) Coils @ 42 $\Omega$ $\pm$ 5% Resistance Each Coil	1 - 2 - 12 - 32	8.0 lbs (3.63 kgs)	
US2:400002	4FB - 2F - 1B 4 A @ 30 V Standard Duty	ST-1 Line	1.5 mA 2.70 V Minimum	4.7 mA 8.46 V Maximum	10 - 12 VDC (2) Coils @ 900 $\Omega$ $\pm$ 5% Resistance Each Coil	1 - 2 - 22 - 27	8.0 lbs (3.63 kgs)	
US2:400003	4FB - 2F - 1B 4 A @ 30 V Standard Duty	ST-1 Line	4.0 mA 3.60 V Minimum	8.4 mA 7.56 V Maximum	10 - 12 VDC (2) Coils @ 450 $\Omega$ $\pm$ 5% Resistance Each Coil	1 - 2 - 3 - 11	8.0 lbs (3.63 kgs)	
US2:400004	4FB - 2F - 1B 4 A @ 30 V Standard Duty	ST-1 Line	5.7 mA 2.85 V Minimum	12.1 mA 6.05 V Maximum	10 - 12 VDC (2) Coils @ 250 $\Omega$ $\pm$ 5% Resistance Each Coil	1 - 2 - 3 - 11	8.0 lbs (3.63 kgs)	
US2:400005	6FB 15 A @ 30 V Standard Duty	ST-1 Line	4.8 mA 2.40 V Minimum	15.7 mA 7.85 V Maximum	10 - 12 VDC (2) Coils @ 250 $\Omega$ $\pm$ 5% Resistance Each Coil	1 - 4 - 6 - 15	8.0 lbs (3.63 kgs)	
US2:400006	4F - 2B 4 A @ 30 V Standard Duty	ST-1 Line	4.5 mA 1.58 V Minimum	8.6 mA 3.01 V Maximum	10 - 12 mADC (2) Coils @ 175 $\Omega$ $\pm$ 5% Resistance Each Coil	1 - 2 - 11 - 30	8.0 lbs (3.63 kgs)	
US2:400007	4FB - 2F - 1B 4 A @ 30 V Standard Duty	ST-1 Line	6.2 mA 2.17 V Minimum	13.7 mA 4.80 V Maximum	10 - 12 VDC (2) Coils @ 175 $\Omega$ $\pm$ 5% Resistance Each Coil	1 - 2 - 3 - 11	8.0 lbs (3.63 kgs)	
US2:400008	4FB - 2F - 1B 4 A @ 30 V Standard Duty	ST-1 Line	5.4 mA 2.70 V Minimum	12.1 mA 6.05 V Maximum	7.60 VDC (2) Coils @ 250 $\Omega$ $\pm$ 5% Resistance Each Coil	1 - 3 - 9 - 30	8.0 lbs (3.63 kgs)	

*Neutral Relay, Regular Release and Regular Pickup*

Relay Products	SIEMENS Part Number	Contact Arrangement	Relay Type	Drop Away Current	Pickup / Working Current	Resistance / Tolerance	Relay Register Plate	Weight
	US2:400010	6FB 4 A @ 30 V Standard Duty	ST-1 Track	52.0 mA 0.21 V Minimum	89.0 mA 0.36 V Maximum	100 - 120 mADC (2) Coils @ 2 $\Omega$ $\pm$ 5% Resistance Each Coil	1 - 2 - 3 - 26	8.0 lbs (3.63 kgs)
	US2:400011	4FB - 2F - 1B 4 A @ 30 V Standard Duty	ST-1 Track	52.0 mA 0.21 V Minimum	89.0 mA 0.36 V Maximum	100 - 120 mADC (2) Coils @ 2 $\Omega$ $\pm$ 5% Resistance Each Coil	1 - 2 - 3 - 15	8.0 lbs (3.63 kgs)
	US2:400012	4FB - 2F - 1B 4 A @ 30 V Standard Duty	ST-1 Track	75.0 mA 0.14 V Minimum	130.0 mA 0.24 V Maximum	150 - 160 mADC (2) Coils @ 0.09 $\Omega$ $\pm$ 5% Resistance Each Coil	1 - 2 - 3 - 15	8.0 lbs (3.63 kgs)
	US2:400013	6FB 4 A @ 30 V Standard Duty	ST-1 Track	78.0 mA 0.14 V Minimum	130 mA 0.24 V Maximum	150 - 160 mADC (2) Coils @ 0.9 $\Omega$ $\pm$ 5% Resistance Each Coil	1 - 2 - 3 - 26	8.0 lbs (3.63 kgs)
	US2:400015	4FB - 2F - 1B 4 A @ 30 V Standard Duty	ST-1 Line	10.5 mA 1.05 V Minimum	19.2 mA 1.92 V Maximum	10 - 12 mADC (2) Coils @ 50 $\Omega$ $\pm$ 5% Resistance Each Coil	1 - 2 - 3 - 15	8.0 lbs (3.63 kgs)
	US2:400017	6FB 4 A @ 30 V Standard Duty	ST-1 Line	4.0 mA 3.60 V Minimum	8.4 mA 7.56 V Maximum	10 - 12 VDC (2) Coils @ 450 $\Omega$ $\pm$ 5% Resistance Each Coil	1 - 2 - 9 - 14	8.0 lbs (3.63 kgs)
	US2:400020	4FB - 2F - 1B 15 A @ 30 V Heavy Duty	ST-1 Line	5.7 mA 2.85 V Minimum	12.1 mA 6.05 V Maximum	10 - 12 VDC (2) Coils @ 250 $\Omega$ $\pm$ 5% Resistance Each Coil	1 - 2 - 15 - 31	8.0 lbs (3.63 kgs)
	US2:400022	4FB - 2F - 1B 15 A @ 30 V Heavy Duty	ST-1 Line	4.0 mA 3.60 V Minimum	9.2 mA 8.28 V Maximum	10 - 12 VDC (2) Coils @ 450 $\Omega$ $\pm$ 5% Resistance Each Coil	1 - 2 - 3 - 11	8.0 lbs (3.63 kgs)
	US2:400023	6FB 15 A @ 30 V Heavy Duty	ST-1 Line	3.4 mA 1.70 V Minimum	16.5 mA 8.25 V Maximum	10 - 12 VDC (2) Coils @ 250 $\Omega$ $\pm$ 5% Resistance Each Coil	1 - 3 - 9 - 23	8.0 lbs (3.63 kgs)

*Neutral Relay, Regular Release and Regular Pickup*

SIEMENS Part Number	Contact Arrangement	Relay Type	Drop Away Current	Pickup / Working Current	Resistance / Tolerance	Relay Register Plate	Weight	Relay Products
US2:400026	6FB 15 A @ 30 V Heavy Duty	ST-1 Line	4.0 mA 3.60 V Minimum	9.2 mA 8.28 V Maximum	10 - 12 VDC (2) Coils @ 450 $\Omega$ $\pm$ 5% Resistance Each Coil	1 - 2 - 5 - 11	8.0 lbs (3.63 kgs)	
US2:400027	4FB - 2F - 1B 15 A @ 30 V Heavy Duty	ST-1 Line	6.2 mA 2.17 V Minimum	13.6 mA 4.76 V Maximum	10 - 12 VDC (2) Coils @ 175 $\Omega$ $\pm$ 5% Resistance Each Coil	1 - 2 - 15 - 31	8.0 lbs (3.63 kgs)	
US2:400028	6FB 4 A @ 30 V Standard Duty	ST-1 Line	14.7 mA 0.88 V Minimum	33.0 mA 1.98 V Maximum	25 - 30 VDC (2) Coils @ 30 $\Omega$ $\pm$ 5% Resistance Each Coil	1 - 2 - 9 - 14	8.0 lbs (3.63 kgs)	
US2:400029	4FB - 2F - 1B 15 A @ 30 V Heavy Duty	ST-1 Line	5.7 mA 2.85 V Minimum	12.1 mA 6.05 V Maximum	10 - 12 VDC (2) Coils @ 250 $\Omega$ $\pm$ 5% Resistance Each Coil	10 - 15 - 20 - 22	8.0 lbs (3.63 kgs)	
US2:400030	2FB - 3F - 3B 4 A @ 30 V Standard Duty	ST-1 Line	95.0 mA 2.70 V Minimum	163.0 mA 4.65 V Maximum	6 VDC (2) Coils @ 900 $\Omega$ $\pm$ 5% Resistance Each Coil	1 - 4 - 9 - 11	8.0 lbs (3.63 kgs)	
US2:400031	4FB - 2F - 1B 4 A @ 30 V Standard Duty	ST-1 Line	8.4 mA 0.71 V Minimum	19.5 mA 1.64 V Maximum	25 - 30 VDC (2) Coils @ 42 $\Omega$ $\pm$ 5% Resistance Each Coil	1 - 2 - 3 - 11	8.0 lbs (3.63 kgs)	
US2:400070	4FB - 2F - 1B 4 A @ 30 V Standard Duty	ST-1 Line	36.0 mA Minimum	114 mA Maximum	10 - 12 VDC (2) Coils @ 65 $\Omega$ $\pm$ 5% Resistance Each Coil	1 - 5 - 7 - 32	8.0 lbs (3.63 kgs)	
US2:450000	12FB 4 A @ 30 V Standard Duty	ST-2 Line	7.1 mA 3.55 V Minimum	11.4 mA 5.70 V Maximum	10 - 12 VDC (2) Coils @ 250 $\Omega$ $\pm$ 5% Resistance Each Coil	1 - 2 - 4 - 33	8.0 lbs (3.63 kgs)	
US2:450001	8FB - 2F 4 A @ 30 V Extra Heavy Duty	ST-2 Line	11.4 mA 3.76 V Minimum	29.4 mA 9.70 V Maximum	10 - 12 VDC (2) Coils @ 165 $\Omega$ $\pm$ 5% Resistance Each Coil	1 - 2 - 10 - 12	8.0 lbs (3.63 kgs)	

ST Series

Neutral Relay, Regular Release and Slow Pickup

Relay Products	SIEMENS Part Number	Contact Arrangement	Relay Type	Drop Away Current	Pickup / Working Current	Resistance / Tolerance	Relay Register Plate	Weight
	US2:400100	6FB 4 A @ 30 V Standard Duty	ST-1 Line	20.0 mA 4.40 V Minimum	41.0 mA 9.00 V Maximum	10 - 12 VDC (1) Coil @ 220 Ω ± 5% Resistance	1 - 2 - 5 - 24	8.0 lbs (3.63 kgs)
	US2:400101	4FB - 2F - 1B 4 A @ 30 V Standard Duty	ST-1 Line	16.0 mA 4.80 V Minimum	34.0 mA 10.20 V Maximum	10 - 12 VDC (1) Coil @ 300 Ω ± 5% Resistance	1 - 2 - 11 - 33	8.0 lbs (3.63 kgs)

*Neutral Relay, Slow Release and Regular Pickup*

SIEMENS Part Number	Contact Arrangement	Relay Type	Drop Away Current	Pickup / Working Current	Resistance / Tolerance	Relay Register Plate	Weight	Relay Products
US2:400014	4FB - 2F - 1B 4 A @ 30 V Standard Duty	ST-1 Line	13 mA 0.65 V Minimum	33.5 mA 1.68 V Maximum	50 mADC (2) Coils @ 25 $\Omega \pm 5\%$ Resistance Each Coil	1 - 2 - 22 - 23	8.0 lbs (3.63 kgs)	
US2:400200	4FB 4 A @ 30 V Standard Duty	ST-1 Line	5.0 mA 0.97 V Minimum	31.0 mA 6.00 V Maximum	10 - 12 VDC (1) Coil @ 194 $\Omega \pm 5\%$ Resistance	1 - 2 - 10 - 25	8.0 lbs (3.63 kgs)	
US2:400210	6FB 4 A @ 30 V Standard Duty	ST-1 Line	9.2 mA 1.78 V Minimum	35.0 mA 6.80 V Maximum	10 - 12 VDC (1) Coil @ 194 $\Omega \pm 5\%$ Resistance	1 - 2 - 4 - 23	8.0 lbs (3.63 kgs)	
US2:400211	4FB - 2F - 1B 4 A @ 30 V Standard Duty	ST-1 Line	9.2 mA 1.78 V Minimum	35.0 mA 6.80 V Maximum	10 - 12 VDC (1) Coil @ 194 $\Omega \pm 5\%$ Resistance	1 - 2 - 12 - 14	8.0 lbs (3.63 kgs)	
US2:400212	4FB - 2F - 1B 4 A @ 30 V Standard Duty	ST-1 Line	5.4 mA 1.05 V Minimum	33.5 mA 6.50 V Maximum	10 - 12 VDC (1) Coil @ 194 $\Omega \pm 5\%$ Resistance	1 - 2 - 11 - 17	8.0 lbs (3.63 kgs)	
US2:400213	2FB 4 A @ 30 V Standard Duty	ST-1 Line	1.4 mA 0.64 V Minimum	14.0 mA 6.44 V Maximum	10 - 12 VDC (1) Coil @ 460 $\Omega \pm 5\%$ Resistance	1 - 2 - 16 - 28	8.0 lbs (3.63 kgs)	
US2:400220	2F - 4B 4 A @ 30 V Standard Duty	ST-1 Line	6.5 mA 0.50 V Minimum	24.0 mA 1.90 V Maximum	10 - 12 VDC (2) Coils @ 80 $\Omega \pm 5\%$ Resistance Each Coil	1 - 2 - 9 - 10	8.0 lbs (3.63 kgs)	
US2:400221	2FB 4 A @ 30 V Standard Duty	ST-1 Line	6.0 mA 0.14 V Minimum	23.0 mA 0.55 V Maximum	Special Voltage (2) Coils @ 12 $\Omega \pm 5\%$ Resistance Each Coil	1 - 3 - 4 - 25	8.0 lbs (3.63 kgs)	
US2:450200	12FB 4 A @ 30 V Standard Duty	ST-2 Line	11.4 mA 2.96 V Minimum	23.1 mA 6.01 V Maximum	10 - 12 VDC (2) Coils @ 260 $\Omega \pm 5\%$ Resistance Each Coil	1 - 3 - 6 - 24	8.0 lbs (3.63 kgs)	

ST Series

Neutral Lamp Control Relay, Regular Release and Regular Pickup

Relay Products	SIEMENS Part Number	Contact Arrangement	Relay Type	Drop Away Current	Pickup / Working Current	Resistance / Tolerance	Relay Register Plate	Weight
	US2:400016	2FB - 5F - 1B 20 A @ 16 V Heavy Duty	ST-1 Lamp Control	4.0 mA 3.60 V Minimum	9.2 mA 8.25 V Maximum	12 VDC (2) Coils @ 220 Ω ± 5% Resistance Each Coil	1 - 3 - 19 - 21	8.0 lbs (3.63 kgs)
	US2:400021	2B 15 A @ 30 V Heavy Duty 2FB 4 A @ 30 V Standard Duty	ST-1 Lamp Control	6.5 mA 1.3 V Minimum	19.0 mA 3.80 V Maximum	10 - 12 VDC (2) Coils @ 100 Ω ± 5% Resistance Each Coil	1 - 2 - 24 - 28	8.0 lbs (3.63 kgs)

## Neutral Light Out Relay, Regular Release and Regular Pickup

SIEMENS Part Number	Contact Arrangement	Relay Type	Drop Away Current	Pickup / Working Current	Resistance / Tolerance	Relay Register Plate	Weight	Relay Products
US2:400300	4FB 4 A @ 30 V Standard Duty	ST-1 Light Out	6.1 mA Minimum w/o Rectifier	11.5 mA Maximum w/o Rectifier	10 - 12 VDC / VAC w/ Rectifier (2) Coils @ 450 / 0.12 $\Omega$ $\pm$ 5% Resistance Each Coil	1 - 2 - 22 - 25	8.0 lbs (3.63 kgs)	
US2:400301	6FB 4 A @ 30 V Standard Duty	ST-1 Light Out	8.0 mA Minimum w/o Rectifier	16.0 mA Maximum w/o Rectifier	10 - 12 VDC / VAC w/ Rectifier (2) Coils @ 450 / 0.20 $\Omega$ $\pm$ 5% Resistance Each Coil	1 - 2 - 8 - 28	8.0 lbs (3.63 kgs)	
US2:400302	4FB 4 A @ 30 V Standard Duty	ST-1 Light Out	6.1 mA Minimum w/o Rectifier	11.5 mA Maximum w/o Rectifier	10 - 12 VDC / VAC w/ Rectifier (2) Coils @ 450 / 0.07 $\Omega$ $\pm$ 5% Resistance Each Coil	1 - 2 - 24 - 32	8.0 lbs (3.63 kgs)	
US2:400303	4FB 4 A @ 30 V Standard Duty	ST-1 Light Out	360 mA Minimum w/o Rectifier	630 mA Maximum w/o Rectifier	10 - 12 VDC / VAC w/ Rectifier (2) Coils @ 0.12 $\Omega$ $\pm$ 5% Resistance Each Coil	1 - 2 - 15 - 18	8.0 lbs (3.63 kgs)	
US2:400305	4FB 4 A @ 30 V Standard Duty	ST-1 Light Out	6.1 mA Minimum w/o Rectifier	13.6 mA Maximum w/o Rectifier	10 - 12 VDC / VAC w/ Rectifier (2) Coils @ 450 / 0.45 $\Omega$ $\pm$ 5% Resistance Each Coil	1 - 4 - 12 - 15	8.0 lbs (3.63 kgs)	



All Neutral Light Out Relays will require an external rectifier stack assembly (US2:400300-1X) in order to be used for AC lighting operations.

US2:400300-1X	External rectifier stack assembly for Neutral Light Out Relay assemblies <i>(Includes hardware)</i>
---------------	---

Relay Products	SIEMENS Part Number	Contact Arrangement	Relay Type	Drop Away Current	Pickup / Working Current	Resistance / Tolerance	Relay Register Plate	Weight
	US2:400500	6FB 4 A @ 30 V Standard Duty	ST-1 Line	5.5 mA 2.75 V Minimum	12.1 mA 6.05 V Maximum	10 - 12 VDC (2) Coils @ 250 $\Omega$ $\pm$ 5% Resistance Each Coil	1 - 2 - 4 - 13	8.0 lbs (3.63 kgs)
	US2:400500-1	6FB 4 A @ 30 V Standard Duty	ST-1 Line	5.5 mA 2.75 V Minimum	12.1 mA 6.05 V Maximum	24 VDC (2) Coils @ 1000 $\Omega$ $\pm$ 5% Resistance Each Coil	1 - 2 - 4 - 13	8.0 lbs (3.63 kgs)
	US2:400501	6FB 4 A @ 30 V Standard Duty	ST-1 Line	14.0 mA 0.88 V Minimum	30.5 mA 1.92 V Maximum	Special Voltage (2) Coils @ 31.5 $\Omega$ $\pm$ 5% Resistance Each Coil	1 - 2 - 4 - 13	8.0 lbs (3.63 kgs)
	US2:400502	4FB - 2F - 1B 4 A @ 30 V Standard Duty	ST-1 Line	5.5 mA 2.75 V Minimum	12.1 mA 6.05 V Maximum	10 - 12 VDC (2) Coils @ 250 $\Omega$ $\pm$ 5% Resistance Each Coil	1 - 2 - 7 - 25	8.0 lbs (3.63 kgs)
	US2:400503	2FB - 4F - 2B 4 A @ 30 V Standard Duty	ST-1 Line	4.1 mA 4.10 V Minimum	8.8 mA 8.80 V Maximum	12 - 16 VDC (2) Coils @ 500 $\Omega$ $\pm$ 5% Resistance Each Coil	1 - 2 - 12 - 20	8.0 lbs (3.63 kgs)
	US2:400504	4FB - 2F - 1B 4 A @ 30 V Standard Duty	ST-1 Line	13.0 mA 1.30 V Minimum	26.0 mA 2.60 V Maximum	12 - 16 VDC (2) Coils @ 50 $\Omega$ $\pm$ 5% Resistance Each Coil	1 - 2 - 7 - 25	8.0 lbs (3.63 kgs)
	US2:400505	6FB 15 A @ 30 V Heavy Duty	ST-1 Line	5.5 mA 2.75 V Minimum	12.1 mA 6.05 V Maximum	10 - 12 VDC (2) Coils @ 250 $\Omega$ $\pm$ 5% Resistance Each Coil	1 - 2 - 4 - 13	8.0 lbs (3.63 kgs)
	US2:400506	4FB - 2F - 1B 15 A @ 30 V Heavy Duty	ST-1 Line	5.5 mA 2.75 V Minimum	12.1 mA 6.05 V Maximum	10 - 12 VDC (2) Coils @ 250 $\Omega$ $\pm$ 5% Resistance Each Coil	1 - 2 - 7 - 25	8.0 lbs (3.63 kgs)
	US2:400506-1	4FB - 2F - 1B 15 A @ 30 V Heavy Duty	ST-1 Line	5.5 mA 2.75 V Minimum	12.1 mA 6.05 V Maximum	10 - 12 VDC (2) Coils @ 1000 $\Omega$ $\pm$ 5% Resistance Each Coil	1 - 2 - 7 - 25	8.0 lbs (3.63 kgs)

*Biased Neutral, Regular Release and Regular Pickup*

SIEMENS Part Number	Contact Arrangement	Relay Type	Drop Away Current	Pickup / Working Current	Resistance / Tolerance	Relay Register Plate	Weight	Relay Products
US2:400507	5F - 4B 4 A @ 30 V Standard Duty	ST-1 Line	82.0 mA 0.33 V Minimum	126.0 mA 0.50 V Maximum	175 - 200 V (2) Coils @ 2 $\Omega$ $\pm$ 5% Resistance Each Coil	1 - 3 - 10 - 27	8.0 lbs (3.63 kgs)	
US2:400508	5F - 4B 4 A @ 30 V Standard Duty	ST-1 Line	243.0 mA 0.12 V Minimum	374 mA 0.19 V Maximum	400 - 450 V (2) Coils @ 1 $\Omega$ $\pm$ 5% Resistance Each Coil	1 - 3 - 10 - 30	8.0 lbs (3.63 kgs)	
US2:400509	2FB - 4F - 2B 4 A @ 30 V Heavy Duty	ST-1 Line	2.7 mA 5.67 V Minimum	5.8 mA 12.18 V Maximum	14 - 42 VDC (2) Coils @ 1050 $\Omega$ $\pm$ 5% Resistance Each Coil	1 - 3 - 9 - 14	8.0 lbs (3.63 kgs)	
US2:400509M	2FB - 4F - 2B 4 A @ 30 V Heavy Duty	ST-1 Line	2.90 mA 6.09 V Minimum	5.5 mA 11.59 V Maximum	14 - 42 VDC (2) Coils @ 1050 $\Omega$ $\pm$ 5% Resistance Each Coil	1 - 3 - 9 - 14	8.0 lbs (3.63 kgs)	
US2:400510	4FB - 2F - 1B 4 A @ 30 V Heavy Duty	ST-1 Line	73.0 mA 0.15 V Minimum	158.0 mA 0.32 V Maximum	175 - 200 mADC (2) Coils @ 1 $\Omega$ $\pm$ 5% Resistance Each Coil	1 - 4 - 5 - 6	8.0 lbs (3.63 kgs)	
US2:400511	4FB 4A @ 30 V Heavy Duty	ST-1 Line	256.0 mA 0.13 V Minimum	365.0 mA 0.18 V Maximum	400 - 450 mADC (2) Coils @ 1 $\Omega$ $\pm$ 5% Resistance Each Coil	1 - 2 - 7 - 25	8.0 lbs (3.63 kgs)	
US2:400512	6FB 4 A @ 30 V Heavy Duty	ST-1 Line	73.0 mA 0.15 V Minimum	158.0 mA 0.32 V Maximum	175 - 200 mADC (2) Coils @ 1 $\Omega$ $\pm$ 5% Resistance Each Coil	1 - 2 - 5 - 33	8.0 lbs (3.63 kgs)	
US2:400513	2FB - 3F - 3B 4 A @ 30 V Heavy Duty	ST-1 Line	4.3 mA 4.30 V Minimum	8.8 mA 8.80 V Maximum	12 - 32 VDC (2) Coils @ 200 $\Omega$ $\pm$ 5% Resistance Each Coil	1 - 2 - 12 - 21	8.0 lbs (3.63 kgs)	
US2:400515	5F - 4B 4 A @ 30 V Heavy Duty	ST-1 Line	256.0 mA 0.13 V Minimum	365.0 mA 0.18 V Maximum	400 - 450mADC (2) Coils @ 1 $\Omega$ $\pm$ 5% Resistance Each Coil	1 - 2 - 7 - 25	8.0 lbs (3.63 kgs)	

*Biased Neutral Switch Overload, Regular Release and Regular Pickup*

Relay Products	SIEMENS Part Number	Contact Arrangement	Relay Type	Drop Away Current	Pickup / Working Current	Resistance / Tolerance	Relay Register Plate	Weight
	US2:400600	2B Extra Heavy Duty Magnetic Blowout	ST-1	5.0 mA 1225 $\Omega$ Coil 6.10 V Maximum		Special Voltage (1) Coil @ 1225 $\Omega \pm 5\%$ Resistance	1 - 2 - 5 - 23	8.0 lbs (3.63 kgs)
	US2:400601	2CBO 4 A @ 30 V Standard Duty	ST-1	18.0 mA 135 $\Omega$ Coil 2.43 V Maximum	70.0 mA 135 $\Omega$ Coil 9.45 V Maximum	Special Voltage (1) Coil @ 135 $\Omega \pm 5\%$ Resistance	1 - 3 - 7 - 10	8.0 lbs (3.63 kgs)
	US2:400602	2CBO 4 A @ 30 V Standard Duty	ST-1	18.0 mA 220 $\Omega$ Coil 3.96 V Maximum	70.0 mA 220 $\Omega$ Coil 15.40 V Maximum	Special Voltage (1) Coil @ 220 $\Omega \pm 5\%$ Resistance	1 - 2 - 11 - 26	8.0 lbs (3.63 kgs)
	US2:400604	2CBO 4 A @ 30 V Standard Duty	ST-1	18.0 mA 135 $\Omega$ Coil 2.43 V Maximum	70.0 mA 135 $\Omega$ Coil 9.45 V Maximum	Special Voltage (1) Coil @ 135 $\Omega \pm 5\%$ Resistance	1 - 3 - 7 - 30	8.0 lbs (3.63 kgs)
	US2:400605	2CBO 4 A @ 30 V Standard Duty	ST-1	10.0 mA 135 $\Omega$ Coil 1.35 V Maximum	40.0 mA 135 $\Omega$ Coil 5.40 V Maximum	Special Voltage (1) Coil @ 135 $\Omega \pm 5\%$ Resistance	1 - 3 - 7 - 9	8.0 lbs (3.63 kgs)
	US2:400605-1	2CBO 4 A @ 30 V Standard Duty	ST-1	5.0 mA 540 $\Omega$ Coil 2.70 V Maximum	35.0 mA 540 $\Omega$ Coil 18.90 V Maximum	Special Voltage (1) Coil @ 540 $\Omega \pm 5\%$ Resistance	1 - 3 - 7 - 9	8.0 lbs (3.63 kgs)

*Biased Neutral Relay, Regular Release and Regular Pickup*

SIEMENS Part Number	Contact Arrangement	Relay Type	Drop Away Current	Pickup / Working Current	Resistance / Tolerance	Relay Register Plate	Weight	Relay Products
US2:400527	6FB 4 A @ 30 V Standard Duty	ST-1 Line	13.0 mA 1.30 V Minimum	26.0 mA 2.60 V Maximum	10 - 12 VDC (2) Coils @ 200 $\Omega$ $\pm$ 5% Resistance Each Coil	2 - 4 - 18 - 23	8.0 lbs (3.63 kgs)	
US2:400528	6FB 4 A @ 30 V Standard Duty	ST-1 Line	5.7 mA 2.30 V Minimum	13.2 mA 5.30 V Maximum	10 - 12 VDC (2) Coils @ 200 $\Omega$ $\pm$ 5% Resistance Each Coil	2 - 4 - 18 - 23	8.0 lbs (3.63 kgs)	
US2:400529	4FB 15 A @ 30 V Heavy Duty 2FB 4 A @ 30 V Standard Duty	ST-1 Line	5.7 mA 2.30 V Minimum	13.2 mA 5.30 V Maximum	10 - 12 VDC (2) Coils @ 250 $\Omega$ $\pm$ 5% Resistance Each Coil	2 - 4 - 13 - 22	8.0 lbs (3.63 kgs)	
US2:400531	4FB - 2F - 1B 4 A @ 30 V Standard Duty	ST-1 Line	3.9 mA 2.93 V Minimum	8.4 mA 6.30 V Maximum	10 - 12 VDC (2) Coils @ 375 $\Omega$ $\pm$ 5% Resistance Each Coil	1 - 2 - 7 - 25	8.0 lbs (3.63 kgs)	
US2:400532	6FB 4 A @ 30 V Standard Duty	ST-1 Line	132.0 mA 0.26 V Minimum	250.0 mA 0.50 V Maximum	400 - 450 mADC (2) Coils @ 1 $\Omega$ $\pm$ 5% Resistance Each Coil	2 - 4 - 19 - 21	8.0 lbs (3.63 kgs)	
US2:400533	6FB 4 A @ 30 V Standard Duty	ST-1 Line	7.9 mA 1.97 V Minimum	16.8 mA 4.20 V Maximum	10 - 12 VDC (2) Coils @ 125 $\Omega$ $\pm$ 5% Resistance Each Coil	1 - 2 - 4 - 13	8.0 lbs (3.63 kgs)	
US2:400534	6FB 4 A @ 30 V Standard Duty	ST-1 Line	116.0 mA 0.12 V Minimum	225.0 mA 0.23 V Maximum	275 - 300 mADC (2) Coils @ 0.5 $\Omega$ $\pm$ 5% Resistance Each Coil	1 - 2 - 4 - 13	8.0 lbs (3.63 kgs)	
US2:400535	4FB - 2F - 1B 4 A @ 30 V Standard Duty	ST-1 Line	14.0 mA 0.88 V Minimum	30.5 mA 1.92 V Maximum	10 - 12 VDC (2) Coils @ 125 $\Omega$ $\pm$ 5% Resistance Each Coil	1 - 2 - 7 - 25	8.0 lbs (3.63 kgs)	
US2:400559	2FB - 6F 4 A @ 30 V Heavy Duty	ST-1 Line	2.7 mA 5.67 V Minimum	5.8 mA 12.18 V Maximum	14 - 42 VDC (2) Coils @ 1050 $\Omega$ $\pm$ 5% Resistance Each Coil	1 - 4 - 13 - 21	8.0 lbs (3.63 kgs)	

Relay Products	SIEMENS Part Number	Contact Arrangement	Relay Type	Drop Away Current	Pickup / Working Current	Resistance / Tolerance	Relay Register Plate	Weight
	US2:400516	6FB 4 A @ 30 V Standard Duty	ST-1 Line	4.0 mA 3.20 V Minimum	8.8 mA 7.04 V Maximum	10 - 12 VDC (2) Coils @ 400 $\Omega$ $\pm$ 5% Resistance Each Coil	1 - 3 - 4 - 15	8.0 lbs (3.63 kgs)
	US2:400517	4FB 4 A @ 30 V Standard Duty	ST-1 Track	4.5 mA 9.00 V Minimum	6.0 mA 12.00 V Maximum	18 - 24 V (2) Coils @ 1000 $\Omega$ $\pm$ 5% Resistance Each Coil	1 - 2 - 10 - 24	8.0 lbs (3.63 kgs)
	US2:400518	4FB 4 A @ 30 V Standard Duty	ST-1 Track	4.0 mA 3.20 V Minimum	8.8 mA 7.04 V Maximum	10 - 12 VDC (2) Coils @ 400 $\Omega$ $\pm$ 5% Resistance Each Coil	1 - 3 - 23 - 24	8.0 lbs (3.63 kgs)
	US2:400519	2FB - 4F - 2B 4 A @ 30 V Standard Duty	ST-1 Line	2.7 mA 5.67 V Minimum	5.8 mA 12.18 V Maximum	14 - 42 VDC (2) Coils @ 1050 $\Omega$ $\pm$ 5% Resistance Each Coil	1 - 3 - 9 - 14	8.0 lbs (3.63 kgs)
	US2:400521	6FB 4 A @ 30 V Standard Duty	ST-1 Line	49.0 mA 0.20 V Minimum	109.0 mA 0.44 V Maximum	Special Voltage (2) Coils @ 4 $\Omega$ $\pm$ 5% Resistance Each Coil	1 - 4 - 6 - 8	8.0 lbs (3.63 kgs)
	US2:400522	4FB - 2F - 1B 4 A @ 30 V Standard Duty	ST-1 Track	243.0 mA 0.12 V Minimum	374.0 mA 0.19 V Maximum	175 - 200 mADC (2) Coils @ 1 $\Omega$ $\pm$ 5% Resistance Each Coil	1 - 4 - 5 - 6	8.0 lbs (3.63 kgs)
	US2:400524	4FB - 2F - 1B 4 A @ 30 V Standard Duty	ST-1 Track	5.5 mA 2.75 V Minimum	12.1 mA 6.05 V Maximum	10 - 12 VDC (2) Coils @ 250 $\Omega$ $\pm$ 5% Resistance Each Coil	1 - 2 - 7 - 25	8.0 lbs (3.63 kgs)
	US2:400525	4FB - 2F - 1B 4 A @ 30 V Standard Duty	ST-1 Track	5.9 mA 2.21 V Minimum	12.6 mA 4.73 V Maximum	10 - 12 VDC (2) Coils @ 187.5 $\Omega$ $\pm$ 5% Resistance Each Coil	1 - 2 - 7 - 25	8.0 lbs (3.63 kgs)
	US2:400526	2FB - 4F - 2B 4 A @ 30 V Standard Duty	ST-1 Track	13.0 mA 1.30 V Minimum	26.0 mA 2.60 V Maximum	10 - 12 VDC (2) Coils @ 50 $\Omega$ $\pm$ 5% Resistance Each Coil	1 - 3 - 9 - 27	8.0 lbs (3.63 kgs)

*Biased Neutral Relay, Regular Release and Slow Pickup*

SIEMENS Part Number	Contact Arrangement	Relay Type	Drop Away Current	Pickup / Working Current	Resistance / Tolerance	Relay Register Plate	Weight
US2:400540	6FB 4 A @ 30 V Standard Duty	ST-1 Line	6.5 mA 5.20 V Minimum	11.9 mA 9.52 V Maximum	10 - 12 VDC (2) Coils @ 200 $\Omega$ $\pm$ 5% Resistance Each Coil	1 - 3 - 11 - 22	8.0 lbs (3.63 kgs)

*Biased Neutral Relay, Slow Release and Regular Pickup*

US2:400530	6FB 4 A @ 30 V Standard Duty	ST-1 Line	6.0 mA 1.16 V Minimum	26.0 mA 5.04 V Maximum	10 - 12 VDC (2) Coils @ 194 $\Omega$ $\pm$ 5% Resistance Each Coil	1 - 2 - 12 - 18	8.0 lbs (3.63 kgs)
------------	------------------------------------	--------------	-----------------------------	------------------------------	--	-----------------	-----------------------

*Biased Neutral Switch Control Relay, Regular Release and Regular Pickup*

US2:400520	2F - 2B 15 A @ 30 V Extra Heavy Duty Magnetic Blowout	ST-1 Line	7.6 mA 3.80 V Minimum	19.0 mA 9.5 V Maximum	10 - 12 VDC (2) Coils @ 250 $\Omega$ $\pm$ 5% Resistance Each Coil	1 - 2 - 12 - 22	8.0 lbs (3.63 kgs)
US2:400520-1	2F - 2B 15 A @ 30 V Extra Heavy Duty Magnetic Blowout	ST-1 Line	7.6 mA 3.80 V Minimum	19.0 mA 9.5 V Maximum	10 - 12 VDC (2) Coils @ 500 $\Omega$ $\pm$ 5% Resistance Each Coil		
US2:400523	2F 15 A @ 30 V Extra Heavy Duty Magnetic Blowout 1F - 2B 4 A @ 30 V Standard Duty	ST-1 Line	7.6 mA 3.80 V Minimum	19.0 mA 9.5 V Maximum	10 - 12 VDC (2) Coils @ 250 $\Omega$ $\pm$ 5% Resistance Each Coil	10 - 12 - 22 - 26	8.0 lbs (3.63 kgs)

*Flasher*

US2:400700	4FB SCdO (Standard Duty)	ST-1 Flasher			60 $\Omega$	1 - 3 - 8 - 10	8.0 lbs (3.63 kgs)
US2:400700-X	4FB SCdO (Standard Duty)	ST-1 Flasher			240 $\Omega$	1 - 3 - 8 - 10	8.0 lbs (3.63 kgs)
US2:400700-1X	4FB SCdO (Standard Duty)	ST-1 Flasher			240 $\Omega$	1 - 3 - 8 - 10	8.0 lbs (3.63 kgs)
US2:400700-7X	4FB SCdO (Standard Duty)	ST-1 Flasher			60 $\Omega$	1 - 3 - 8 - 10	8.0 lbs (3.63 kgs)

Relay Products	SIEMENS Part Number	Contact Arrangement	Relay Type	Resistance / Tolerance	Relay Register Plate	Weight
	US2:400950	2FG Tungsten, 2F Silver/Platinum 2B Tungsten (Standard Duty)	ST-1 Line	200 $\Omega \pm 5\%$ Resistance Each Coil	1 - 3 - 9 - 28	8.0 lbs (3.63 kgs)
	US2:400951	4FB Tungsten (Standard Duty)	ST-1 Track	22 $\Omega \pm 5\%$ Resistance Each Coil	1 - 2 - 9 - 17	8.0 lbs (3.63 kgs)
	US2:400952	2NR Silver/Platinum (Standard Duty)	ST-1 Track	80 $\Omega \pm 5\%$ Resistance Each Coil	1 - 3 - 9 - 25	8.0 lbs (3.63 kgs)
	US2:400953	2FB Tungsten, 2FB Silver/Platinum (Standard Duty)	ST-1 Track	80 $\Omega \pm 5\%$ Resistance Each Coil	1 - 3 - 9 - 24	8.0 lbs (3.63 kgs)
	US2:400954	4FB Silver/Tungsten (Standard Duty)	ST-1 Track	80 $\Omega \pm 5\%$ Resistance Each Coil	1 - 3 - 4 - 33	8.0 lbs (3.63 kgs)
	US2:400955	4FB Silver/Platinum (Standard Duty)	ST-1 Track	80 $\Omega \pm 5\%$ Resistance Each Coil	1 - 3 - 4 - 33	8.0 lbs (3.63 kgs)
	US2:400956	2F Tungsten, 2B Silver/Platinum (Standard Duty)	ST-1 Track	80 $\Omega \pm 5\%$ Resistance Each Coil	1 - 2 - 18 - 29	8.0 lbs (3.63 kgs)
	US2:400957	2FB Tungsten. 2FB Silver/Platinum (Standard Duty)	ST-1 Track	80 $\Omega \pm 5\%$ Resistance Each Coil	1 - 3 - 9 - 28	8.0 lbs (3.63 kgs)

SIEMENS Part Number	Contact Arrangement	Relay Type	Resistance / Tolerance	Relay Register Plate	Weight	Relay Products
US2:450992	4F Silver/Carbon 4B Silver (Standard Duty)	ST-2, Double Base Vane Track Relay	Track .524 $\Omega$ Local 144 $\Omega$	25 - 26- 27 - 30	11.0 lbs (4.99 kgs)	
US2:450993	4F Silver/Carbon 4B Silver (Standard Duty)	ST-2, Double Base Vane Track Relay	Track .4 $\Omega$ Local 67 $\Omega$	25 - 26- 29 - 32	11.0 lbs (4.99 kgs)	
US2:450994	2F Silver/Carbon 2B Silver (Standard Duty)	ST-2, Double Base Vane Track Relay	Track 5 $\Omega$ Local 144 $\Omega$	25 - 26- 27 - 31	11.0 lbs (4.99 kgs)	
US2:450994-N	2F Silver/Carbon 2B Silver (Standard Duty)	ST-2, Double Base Vane Track Relay	Track 5 $\Omega$ Local 144 $\Omega$	25 - 26- 27 - 31	11.0 lbs (4.99 kgs)	

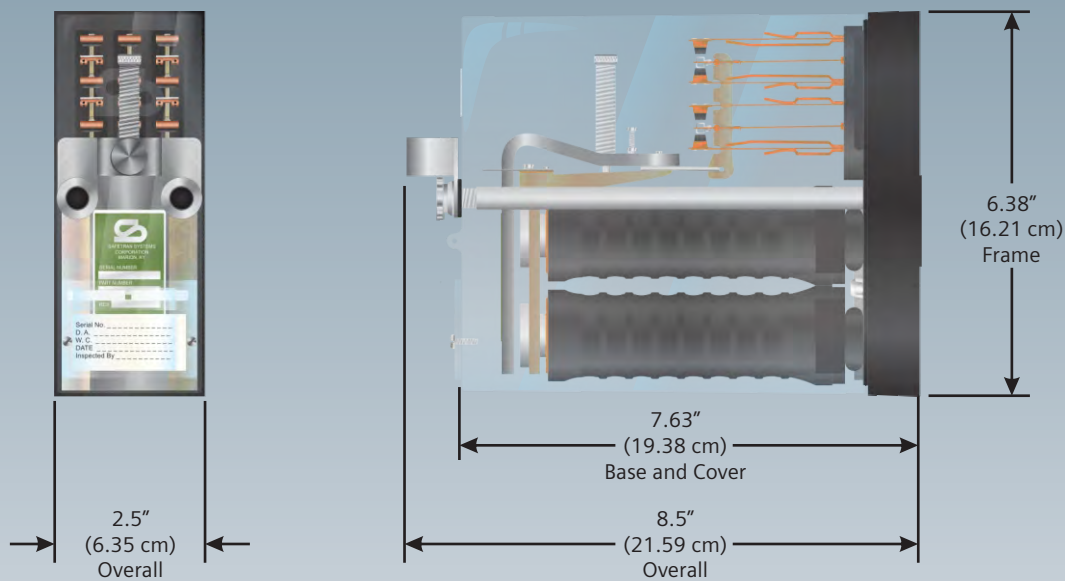
Power Transfer

US2:400800	6FB Silver (Heavy Duty)	ST-1, Power Transfer	100/100 $\Omega$	1 - 2 - 6 - 16	8.0 lbs (3.63 kgs)
US2:400800-X	6FB Silver (Heavy Duty)	ST-1, Power Transfer	100/100 $\Omega$	1 - 3 - 9 - 17	8.0 lbs (3.63 kgs)
US2:400801	6FB Silver/Carbon (Heavy Duty)	ST-1, Power Transfer	100/100 $\Omega$	1 - 2 - 11 - 15	8.0 lbs (3.63 kgs)
US2:400801-X	6FB Silver/Carbon (Heavy Duty)	ST-1, Power Transfer	100/100 $\Omega$	1 - 2 - 11 - 15	8.0 lbs (3.63 kgs)
US2:400802	6FB Silver (Heavy Duty)	ST-1, Power Transfer	100/100 $\Omega$	1 - 2 - 11 - 15	8.0 lbs (3.63 kgs)
US2:400802-X	6FB Silver (Heavy Duty)	ST-1, Power Transfer	100/100 $\Omega$	1 - 2 - 11 - 15	8.0 lbs (3.63 kgs)

Magnetic Stick

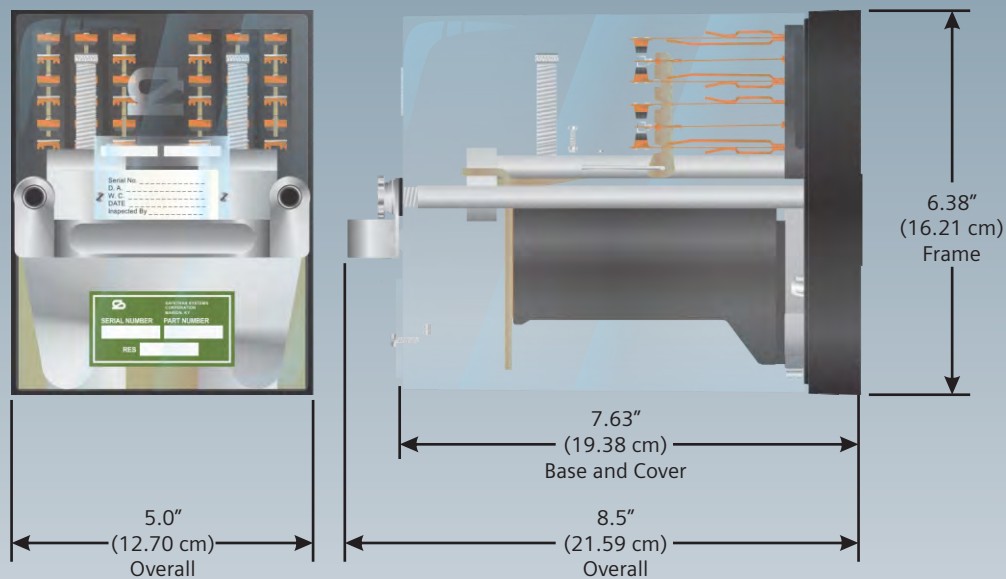
US2:400900	4NR Silver/Carbon (Standard Duty)	ST-1, Magnetic Stick	500 $\Omega$	1 - 3 - 4 - 16	8.0 lbs (3.63 kgs)
US2:400901	2NR Silver/Platinum (Standard Duty)	ST-1, Magnetic Stick	26/26 $\Omega$	1 - 3 - 25	8.0 lbs (3.63 kgs)
US2:400904	4NR Silver/Carbon (Standard Duty)	ST-1, Magnetic Stick	7 $\Omega$	1 - 3 - 5 - 20	8.0 lbs (3.63 kgs)

Applicable for all ST-1 frame relays







1. Generic depiction of ST-1 Series frame dimensions for representations purposes only!  
Actual model selected may vary in configuration and features.

Applicable for all ST-2 (Non Vane) frame relays



1. Generic depiction of ST-2 Series frame dimensions for representations purposes only!  
Actual model selected may vary in configuration and features.

NYK:27E805	NYK:27E809
	
<p><b>Relay Socket Base</b></p> <ul style="list-style-type: none"><li>• Weight is approx. 1.2 lbs. (0.54 kgs.)</li><li>• Made from black phenolic compound</li><li>• NO socket terminal inserts</li><li>• NO hold down studs</li><li>• NO test posts</li><li>• NO terminals</li></ul>	<p><b>Relay Socket Base Basic Assembly</b></p> <ul style="list-style-type: none"><li>• Weight is approx. 1.2 lbs. (0.54 kgs.)</li><li>• Made from black phenolic compound</li><li>• (11) NYK:420000-61 Socket Terminal Inserts</li><li>• NO hold down studs</li><li>• NO test posts</li><li>• NO terminals</li></ul>
NYK:420000-40X	NYK:420000-41X
	
<p><b>Relay Socket Base Assembly</b></p> <ul style="list-style-type: none"><li>• Weight is approx. 1.4 lbs. (0.64 kgs.) not including base</li><li>• (1) NYK:27E809 Relay Socket Base Assembly</li><li>• (1) NYK:42000-40X1 socket hardware kit</li><li>• (1) NYK:155373 hold down stud</li></ul>	<p><b>Relay Socket Base Assembly</b></p> <ul style="list-style-type: none"><li>• Weight is approx. 1.4 lbs. (0.64 kgs.) not including base</li><li>• (1) NYK:420000-40X Relay Socket Base Assembly</li><li>• (1) NYK:420000-49X #20-16 crimp terminal</li></ul>

NYK:420000-43X



**Relay Socket Base Assembly**

- Weight is approx. 1.4 lbs. (0.64 kgs.) not including base
- Made from black phenolic compound
- (1) NYK:420000-40X Relay Socket Base Assembly
- (1) NYK:420000-50X #14-10 crimp terminal

NYK:420000-75X



**Relay Socket Base Assembly**

- Weight is approx. 1.5 lbs. (0.68 kgs.)
- Made from black phenolic compound
- (1) NYK:420000-40X Relay Socket Base Assembly
- (1) NYK:420000-46X test post kit

NYK:420000-77X



**Relay Socket Base Assembly**

- Weight is approx. 1.6 lbs. (0.73 kgs.)
- (1) NYK:420000-40X Relay Socket Base Assembly
- (1) NYK:420000-48X Solder terminal
- (1) NYK:420000-46X test post kit

NYK:420000-78X



**Relay Socket Base Assembly**

- Weight is approx. 1.6 lbs. (0.73 kgs.)
- (1) NYK:420000-40X Relay Socket Base Assembly
- (1) NYK:420000-50X #14-10 crimp terminal
- (1) NYK:420000-46X test post kit

NYK:420000-61



- Socket Terminal Insert**
- Weight is approx. 2 oz. (0.06 kgs.) not including base
  - Made from black polycarbonate
  - Used to secure relay to relay base
  - (9) typically required for ST1 style relay, (18) typically required for ST2 style relay

NYK:420000-48



- Terminal Solder Tab**
- Weight is approx. 2 oz. (0.06 kgs.) not including base
  - Made from 24 ga phosphorus bronze
  - Folded tabs for soldering

NYK:420000-49



- Terminal Crimping Tab**
- Weight is approx. 2 oz. (0.06 kgs.) not including base
  - Made from 24 ga phosphorus bronze
  - Loop tabs for crimping
  - accepts 16 - 20 AWG

NYK:420000-50



- Terminal Crimping Tab**
- Weight is approx. 2 oz. (0.06 kgs.) not including base
  - Made from 24 ga phosphorus bronze
  - Loop tabs for crimping
  - accepts 10 - 14 AWG