

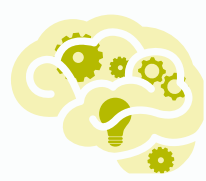
The Curiosity Project

A three-year engagement programme by Siemens, aimed at bringing science, technology, engineering and mathematics (STEM) to life for young people in the UK. For more information, visit siemens.co.uk/curiosity-project

Why the Curiosity Project?



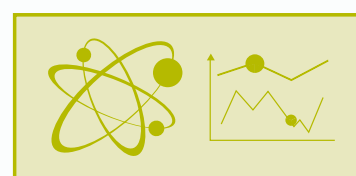
Britain is great at engineering, but we need more engineers!



People don't know what engineering is



Engineering provides great prospects

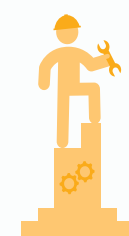


Teachers and parents need support and information

Our aims



Provide career inspiration and aspirations



Leave a legacy to inspire future generations



Support parents, teachers and careers advisors



Encourage and facilitate networking



Helping employees to be involved in local communities



Provide investment and support to our project partners

An overview of what we have done in Year 2



404k

Visitors engaged at Curiosity Project events



1163

Siemens employee volunteers deployed



50

Executive networking opportunities created



+96%

People rated Curiosity Project events excellent or good

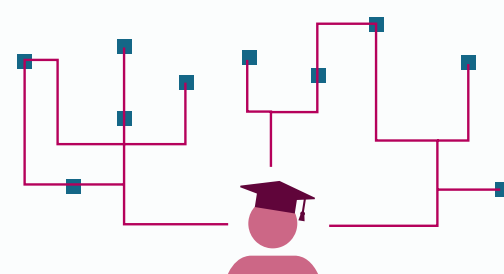
*Based on Curiosity Project activities and visitor research data, October 2015 to October 2016

Impact on visitors at Curiosity Project events*



+80%

Parents who perceived that their children are more interested in a career in engineering



+14%

Parents' knowledge about engineering as a career



+20%

Feel the Curiosity Project makes a positive contribution to their community

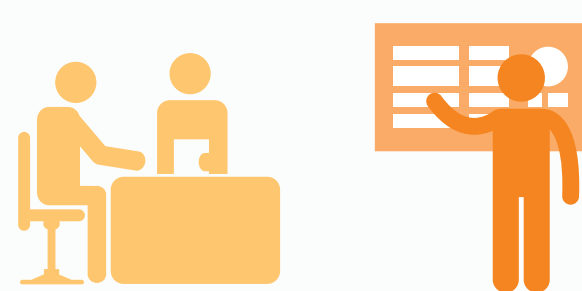
*Based on research at 5 Curiosity Project supported festivals, October 2015 to October 2016

Impact on teachers*



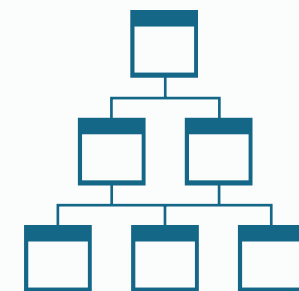
94%

Think that what they learn on the course will make them better teachers



97%

Believe it will positively impact pupils within 6 months



68,900

Total pupil reach of just one residential course

"...My fire has been relit and this can only enhance my teaching..."

* Based on research conducted post The Prince's Teaching Institute Science and Maths Autumn Residential course 2016

The Curiosity Project Partners

