

The background of the slide features a modern building at night with large glass windows and a swimming pool. In the foreground, a Siemens LOGO! controller is shown, which is a grey industrial device with various terminals and a small screen. To its right, a smartphone displays a web interface for controlling the pool system. The interface includes a live video feed of the pool, a temperature slider, and buttons for 'Auto', 'Filter', and 'Light'.

## Welcome to the LOGO! Workshop customized webserver

unrestricted © Siemens AG 2018

[siemens.tld/keyword](http://siemens.tld/keyword)

## LOGO! Web Editor - agenda



1	Welcome to the workshop – customized webserver
2	LOGO! 8 webserver – simply and affordable creation of customized websites
3	LOGO! webserver options
4	LOGO! Web Editor
5	Necessary supplies to create and run a customized website
6	Overview of the LWE tool interface
7	LWE components in detail
8	Frist steps with the LOGO! Web Editor
9	Designing digital components

## Welcome to the workshop – customized webserver



The purpose of this workshop is to introduce our new and innovative tool. This tool enables the creation of customized websites. Furthermore the procedure of creating a customized website is performed in this workshop.

All screenshots were taken by using the LOGO! Web Editor V1.0.0 (2017-10-23 13-30)

The download is published on our LOGO! homepage and you can find it via following:

<https://w3.siemens.com/mcms/programmable-logic-controller/en/logic-module-logo/demo-software/Pages/Default.aspx>

**Enjoy the workshop!**



# LOGO! 8 webserver – simply and affordable creation of customized websites



## LOGO! – integrated webserver Basic version „text messages“



## Advanced version „customized websites“



### attribute / function

#### Integrated webserver

- Designing websites without any HTML knowledge
- simply version to display text messages and function buttons of the TDE
- Customized websites created by yourself using LOGO! Web Editor (LWE = open source)
- Advanced user can optimize the websites by using HTML 5
- Compatible with all common web browsers (Internet Explorer, Chrome, Firefox etc.)



### benefit

Affordable solution for controlling systems via smartphones, tablets and computers

- No additional knowledge necessary because of using text messages
- Creating own websites without HTML knowledge
- Individual optimization of websites using HTML 5



## LOGO! webservice options

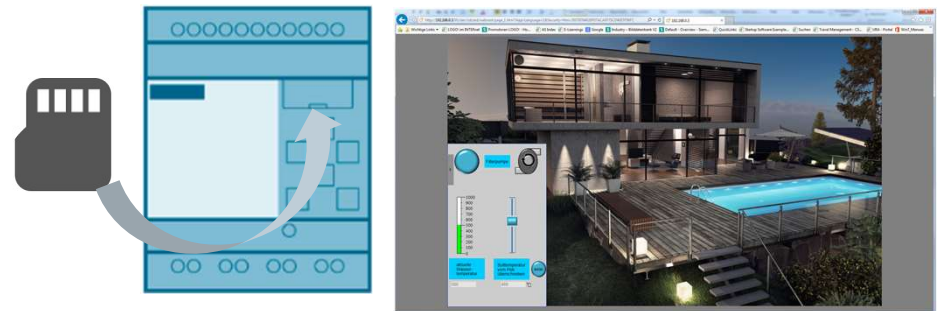
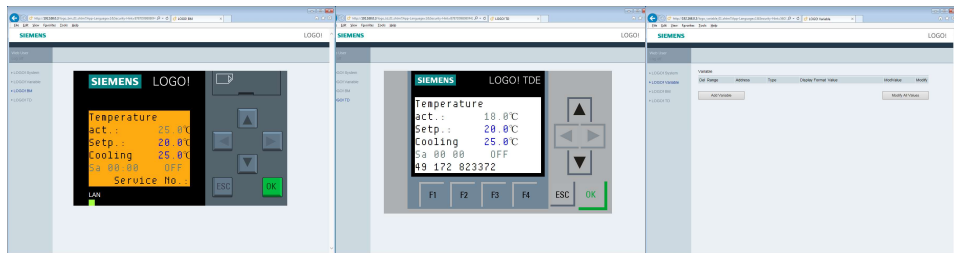


### TDE based and internal webservice:

- text messages via LOGO! Soft Comfort
- Integrated since LOGO! 8
- Displaying:
  - LOGO! device
  - LOGO! TDE with function buttons
  - Variable table

### Customized webservice:

- Creating websites using LOGO! Web Editor (LWE) (no additional knowledge necessary)
- Projects are editable by using HTML 5
- LOGO! Basic Module needs a Micro-SD card for saving the customized website



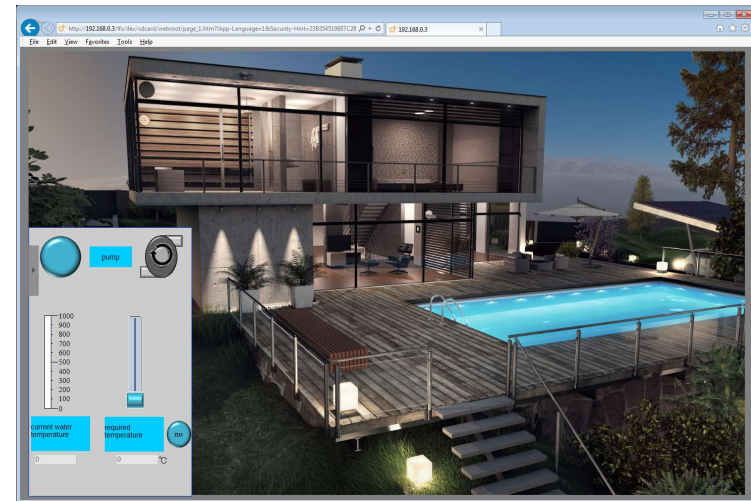
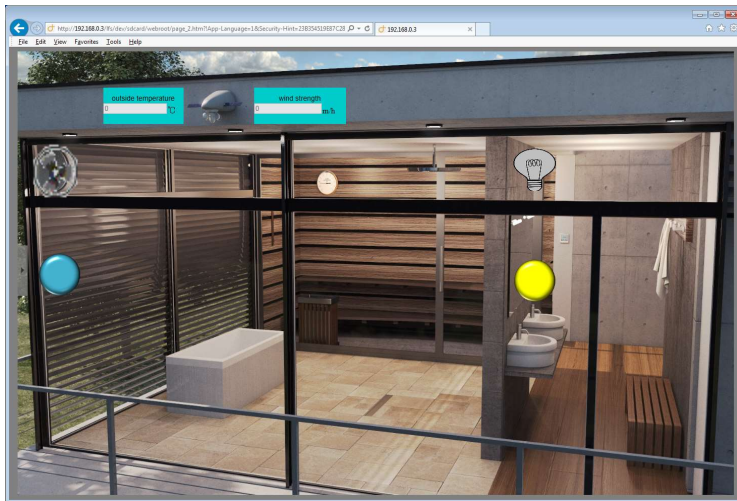
Both webservers use the same password and must be enable in LOGO! Soft Comfort „Tools – Transfer – Access control“

## LOGO! Web Editor



**The LWE allows to create customized websites, which are used to control and monitor LOGO! automated tasks:**

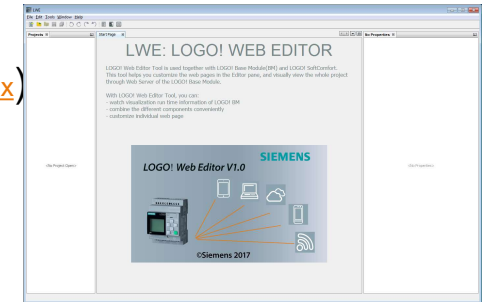
- Individual user interfaces
- Controllable by any terminal device (just browser necessary)
  - Customizable resolution (according to your device)
- Location independent controlling (e.g. via smartphone)



## Necessary supplies to create and run a customized website



- **LOGO! Web Editor** (Download via LOGO! homepage:  
<https://w3.siemens.com/mcms/programmable-logic-controller/en/logic-module-logo/demo-software/Pages/Default.aspx>)  
 (supported operating systems: Windows 32/64, Linux 32/64 und MacOS)



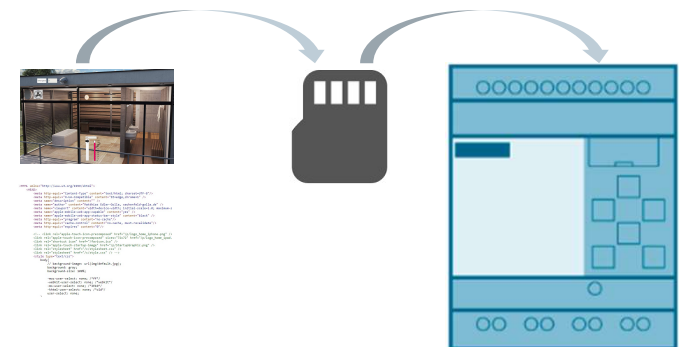
- **LOGO! Soft Comfort V8.2** (for programming)

- **LOGO! 8 basic module version 8.2**

LOGO! 12/24RCE	6ED1052-1MD08-0BA0
LOGO! 12/24RCEo	6ED1052-2MD08-0BA0
LOGO! 230RCE	6ED1052-1FB08-0BA0
LOGO! 230RCEo	6ED1052-2FB08-0BA0
LOGO! 24RCE	6ED1052-1HB08-0BA0
LOGO! 24RCEo	6ED1052-2HB08-0BA0
LOGO! 24CE	6ED1052-1CC08-0BA0
LOGO! 24CEo	6ED1052-2CC08-0BA0

(1/2018)

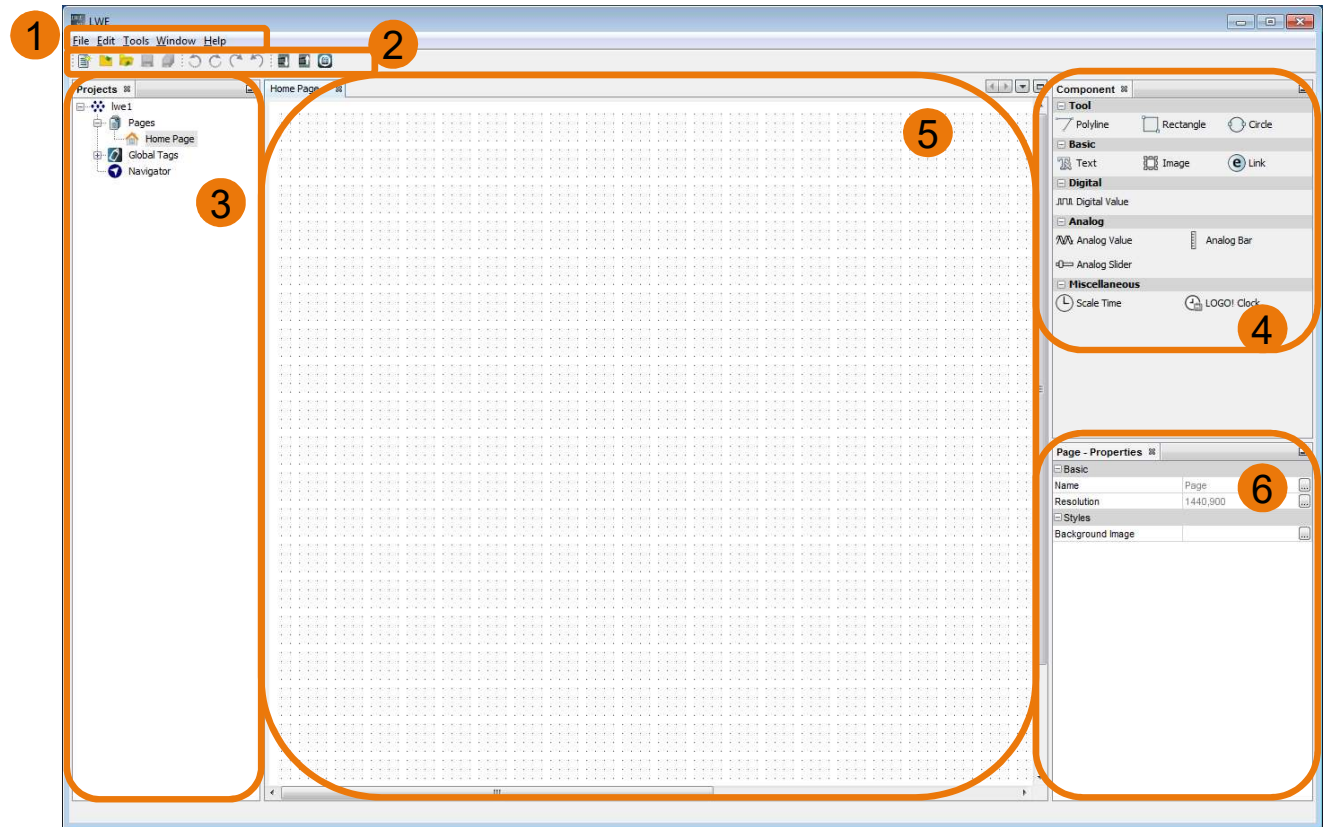
- **Micro-SD card** for using customized websites  
 (All required data like pictures are stored on this Micro-SD card)



# Overview of the LWE tool interface

- 1 Menu bar
- 2 Standard toolbar
- 3 Project pane
- 4 Component pane
- 5 Editor pane
- 6 Property pane

The tool interface can be customized!



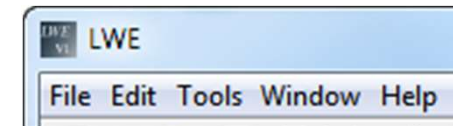


## Overview of the LWE tool interface



### Menu bar:

File, Edit, Tools, Window, Help



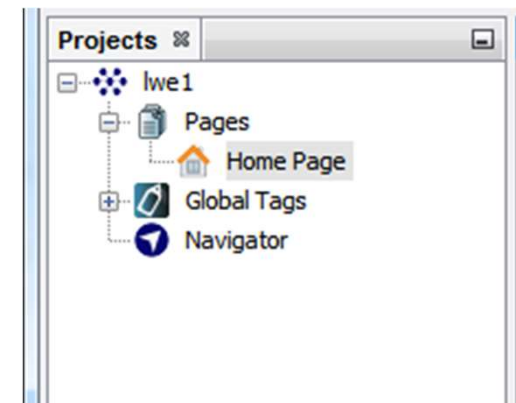
### Standard toolbar:

New project, open project, close project, save, save as, left / right rotate, redo, undo, download, upload, deploy on SD card



### Project pane:

Project name, pages, Global Tags, Navigator



## Overview of the LWE tool interface



### Component pane:

The components have to drag and drop into the editor pane.

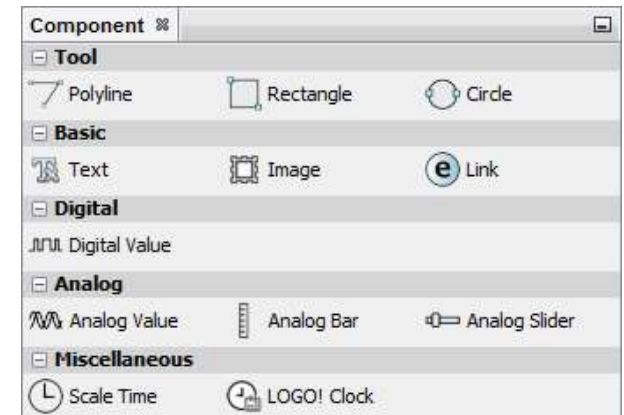
**Tool:** to draw graphics

**Basic:** Text, Image and Link

**Digital:** Digital Value (control buttons)

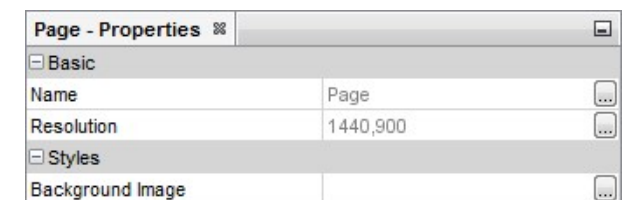
**Analog:** Analog Value (writeable), Analog Bar (monitoring bar graph) and Analog Slider (writeable)

**Miscellaneous:** Scale Time and LOGO! Clock



### Properties pane:

Here you can customize the properties of a selected component or page.



## Overview of the LWE tool interface

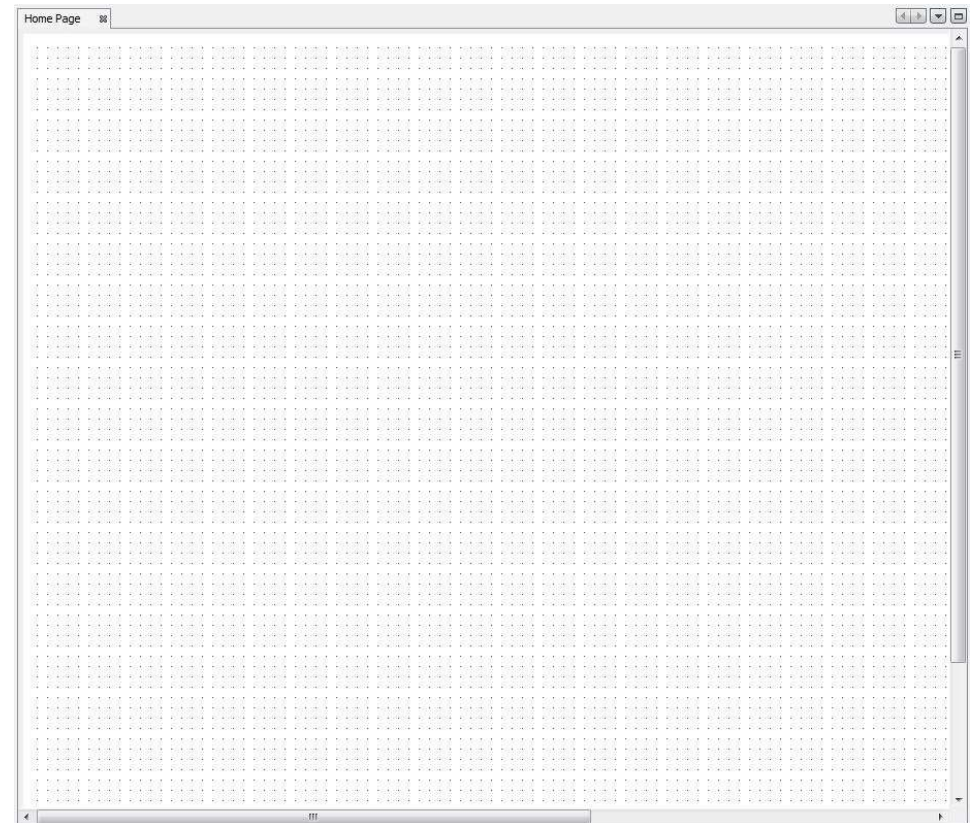
### Editor pane:

The editor pane is the working area for the project. In this working area the customized websites will be generated. The area is used to place components, design images or buttons, add backgrounds, and set properties.

**Different resolutions are able to customize**

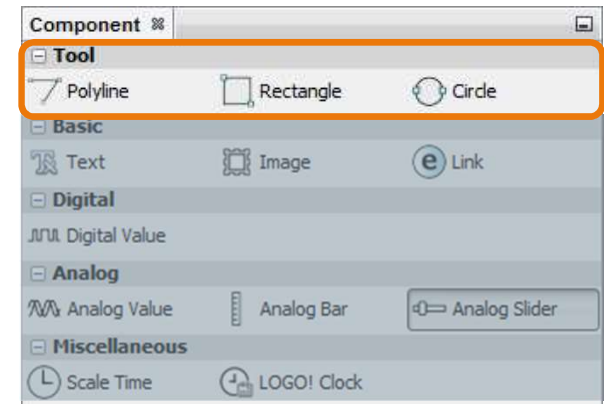
- e.g.:** - smartphone
- tablet
- computer

**(see page 28)**



## Components in detail: Tool

Polyline, Rectangle and circle can be used to design own images.



Polyline - Properties	
Basic	
Name	Polyline
Styles	
Weight	1
Color	■ [0,0,0]
Dashed	Solid
Transparency	0

Rectangle - Properties	
Basic	
Name	Rectangle
Location	460,244
Size	140,128
Styles	
Border Width	1
Border Style	Solid
Border Color	■ [0,0,0]
Background Color	□ [255,255,255]
Transparency	0
Fill	

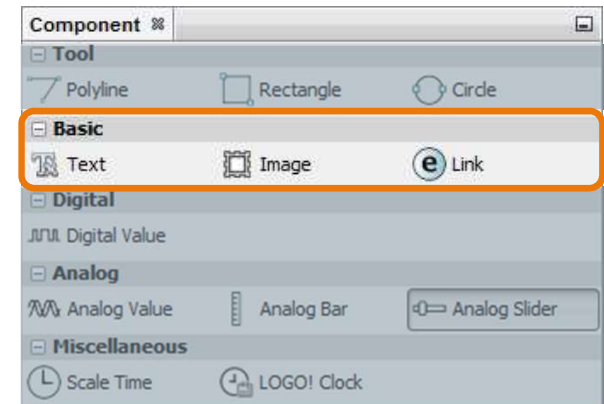
Circle - Properties	
Basic	
Name	Circle
Location	448,248
Size	100,100
Styles	
Border Width	1
Border Style	Solid
Border Color	■ [0,0,0]
Background Color	□ [255,255,255]
Transparency	0
Fill	

## Components in detail: Basic

**Text:** to monitor text information

**Image:** to monitor images

**Link:** to add another URL-links or websites



Text - Properties %	
Basic	
Name	Text
Location	404,296
Size	100,57
Styles	
Font	Arial 14 Plain
Text Color	■ [0,0,0]
Background Color	□ [255,255,255]
Fill	■
Values	
Text Value	Text

Image - Properties %	
Basic	
Name	Image
Location	464,270
Size	100,100
Values	
Image	Default.png

Link - Properties %	
Basic	
Name	Link
Location	549,311
Size	100,50
Styles	
Font	Arial 14 Plain
Text Color	■ [0,0,0]
Background Color	□ [255,255,255]
Fill	■
Values	
Text Value	Link
Url	http://

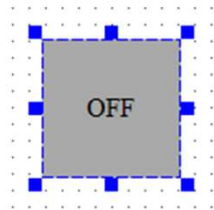


## Components in detail: Digital

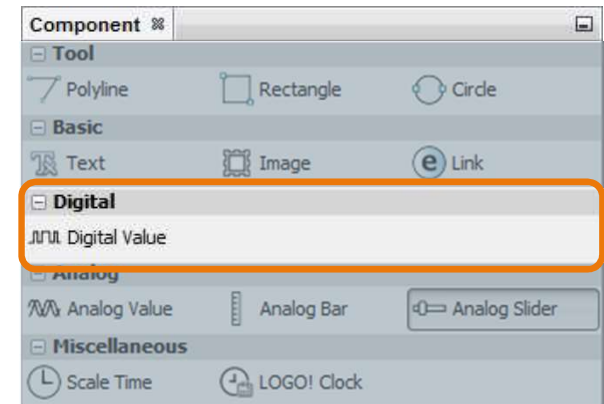
### Digital Value:

The Digital Value is one of the most important components. This component can be used to monitor and control digital signals.

Other images can be added for the signal state „on“ and „off“.



Digital Value - Properties		
Basic		
Name	Digital Value	...
Location	433,334	...
Size	100,100	...
Variable		
Variable Name	Private Tag	▼
Block Type	I	▼
Block Number	I1	▼
Writable	<input type="checkbox"/>	
Animation		
On Image	Default.png	...
Off Image	Default.png	...
On Text	ON	...
Off Text	OFF	...

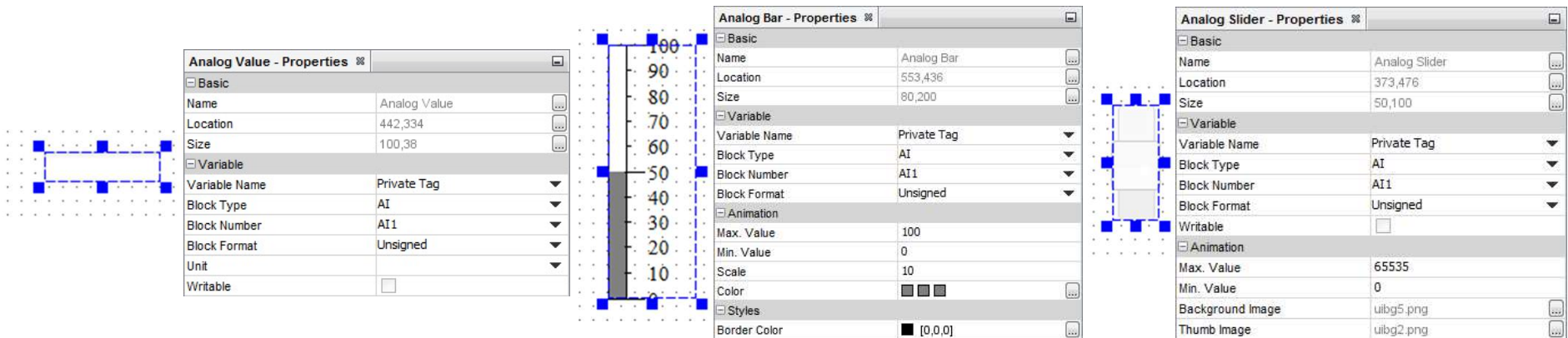
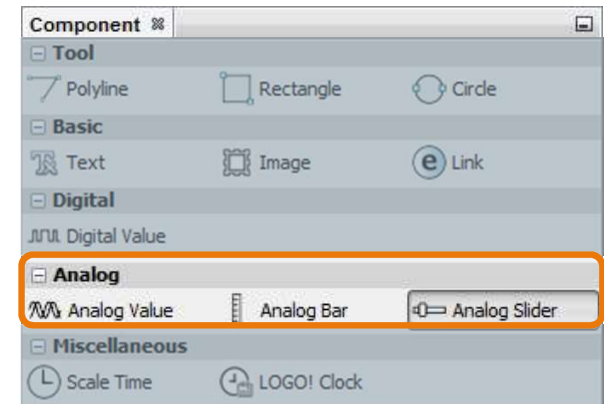


## Components in detail: Analog

**Analog Value:** to monitor and specify analog values (numeric)

**Analog Bar:** to monitor analog values (just reading)

**Analog Slider:** to monitor and specify analog values



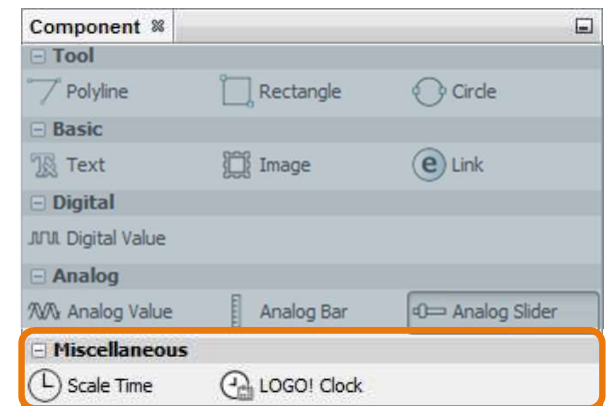
## Components in detail: Miscellaneous

### Scale Time:

To convert integer values (e.g. counter values into time values)

### LOGO! Clock:

To monitor Date and Time of the connected LOGO! 8



Scale Time - Properties	
Basic	
Name	Scale Time
Location	370,363
Size	100,38
Variable	
Variable Name	Private Tag
Block Type	AI
Block Number	AI1
Time	Hours(h)
Writable	<input type="checkbox"/>

LOGO! Clock - Properties	
Basic	
Name	LOGO! Clock
Location	444,448
Size	120,60
Styles	
Font	Arial 14 Plain
Text Color	■ [0,0,0]
Background Color	□ [255,255,255]
Fill	

# First steps with the LOGO! Web Editor

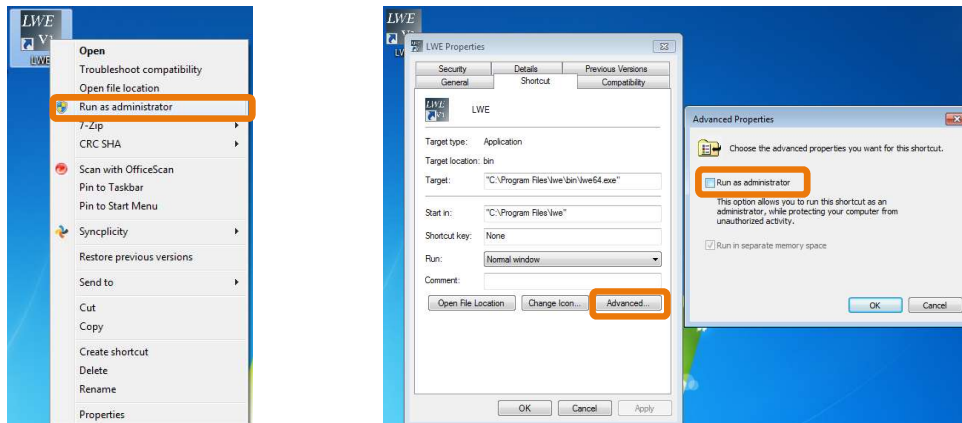


Install the LOGO! Web Editor!

Run LWE as administrator (2 Options):

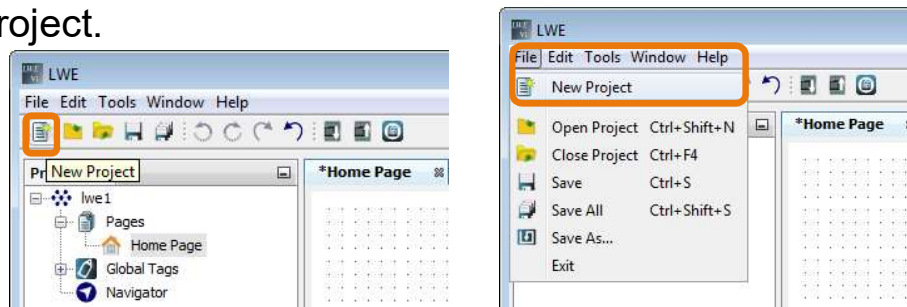
- Right click on LWE.exe – “run as administrator”
- Right click on LWE.exe „Properties – Advanced“ and enable “run as administrator”

Now symbols and images are able to import into the Library

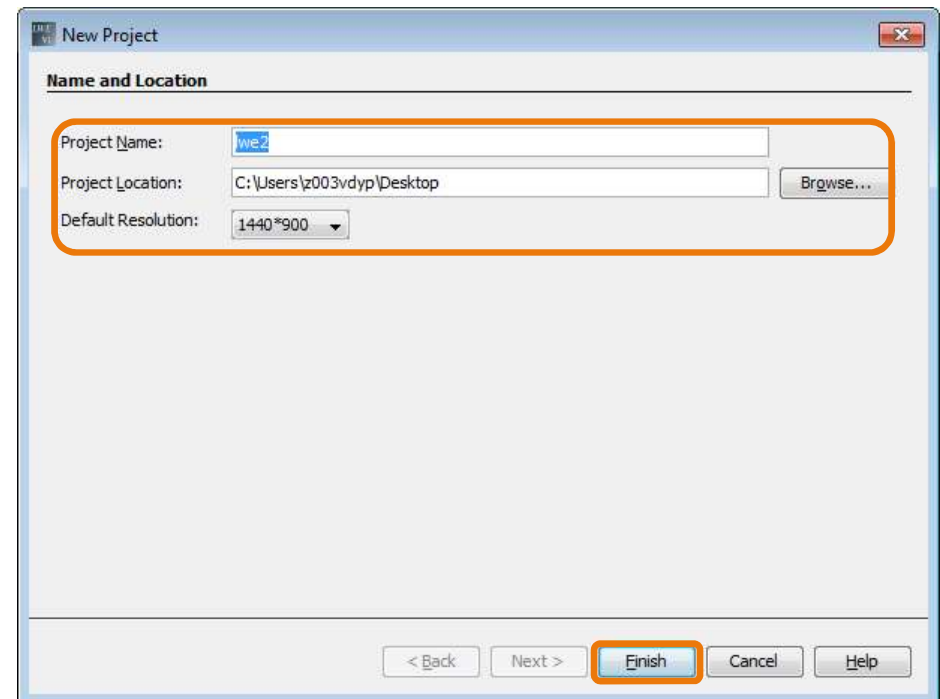


## First steps with the LOGO! Web Editor

Once the LOGO! Web-Editor is running, create a new project.



- Enter a project name
- Select a project location on your computer
- Select the default resolution of your website



Afterwards you are still able to change the resolution. There is also the option to add another pages with different resolutions. This benefit enables different websites for various devices.

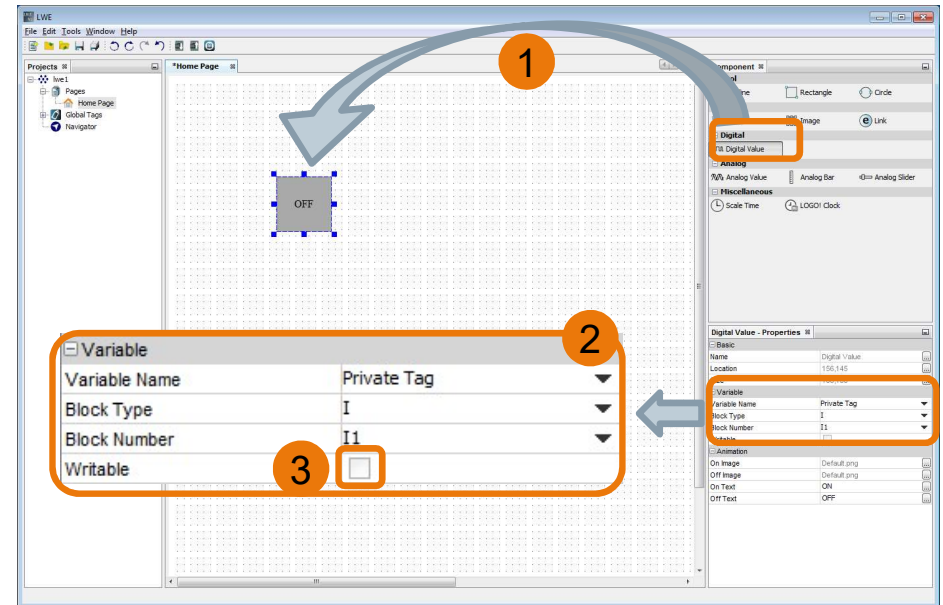


## First steps with the LOGO! Web Editor



Add a Digital Value to control and monitor the digital output Q1.

1. Digital Value needs to drag and drop into the editor pane
2. Select “Q” as Block type and Q1 as Block Number
3. Attention: Enable “writable” otherwise it is not possible to modify the variable



## First steps with the LOGO! Web Editor

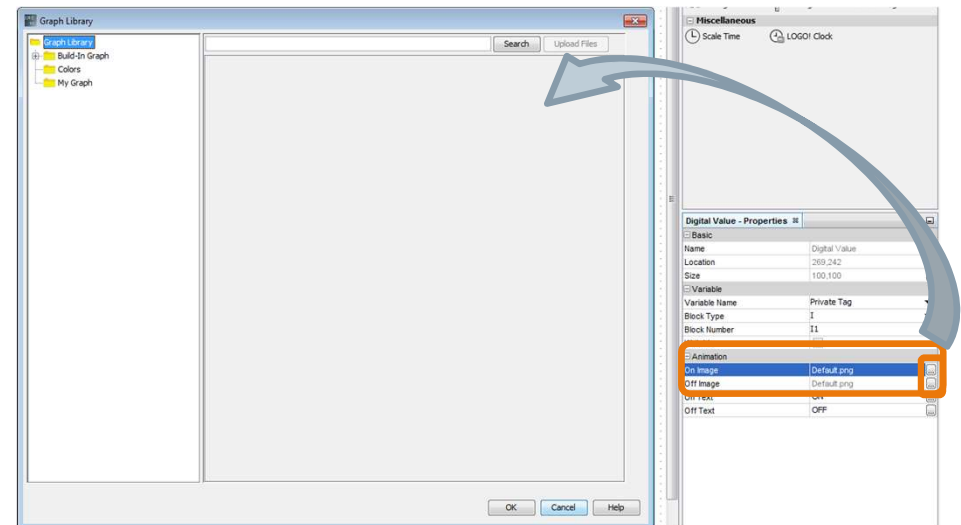
We will now add an animation to the Digital Value. LOGO! Web Editor Tool offers different images and animations.

Possibilities for Digital Value:

- Images, gifs or text information for the signal state “ON”
- Images, gifs or text information for the signal state „OFF”

If you click on “...”, the Graph Library will be open

- Build-In Graph (pre-installed animations, images...)
- Colors (pre-installed background colors)
- My Graphs (adding own images and animations)



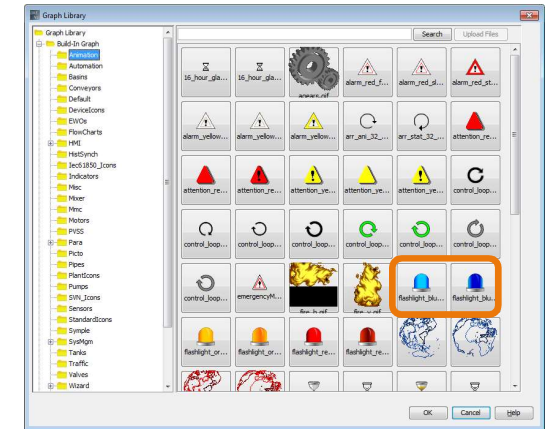
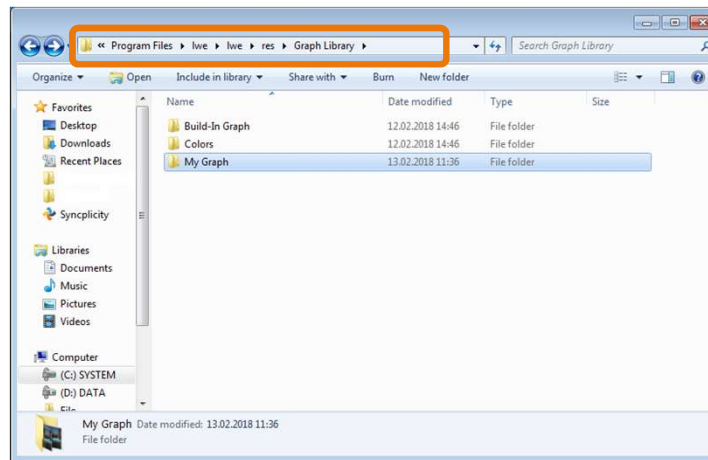
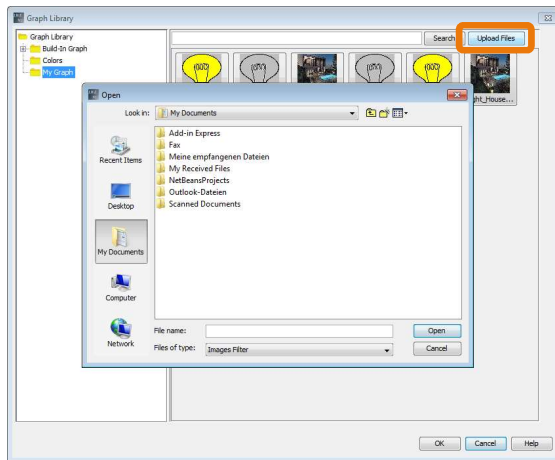
## First steps with the LOGO! Web Editor



We select for example „*flashinglight\_blue*“  
This animation is located in „*Build-In Graph – Animation*“.

To add own images or animation, there are two options:

- Via “*Upload file*” in “*My Graph*” to import own images
- Copy and paste into the location of “*My Graph*” (needs to confirm by the administrator)



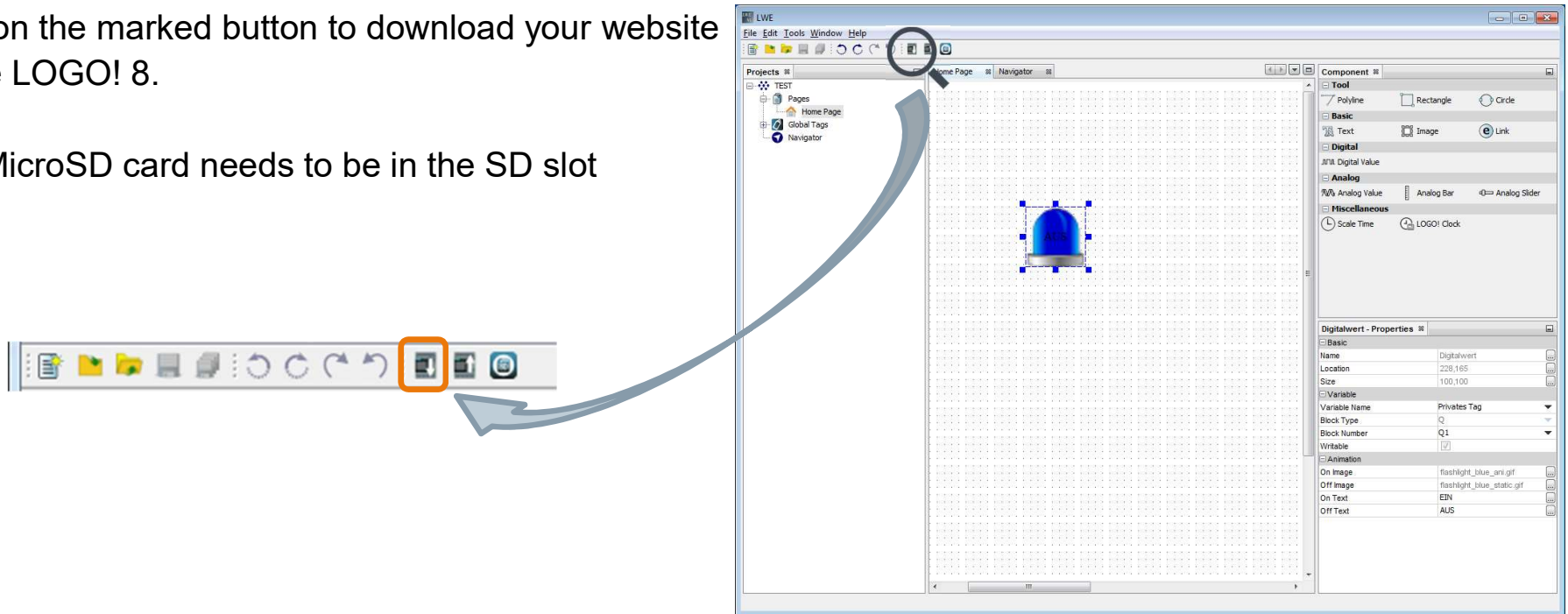
**The location of the folders depends on the installed location!**

**„... - Iwe - Iwe - res - Graph Library – My Graph“**

## Frist steps with the LOGO! Web Editor

Click on the marked button to download your website on the LOGO! 8.

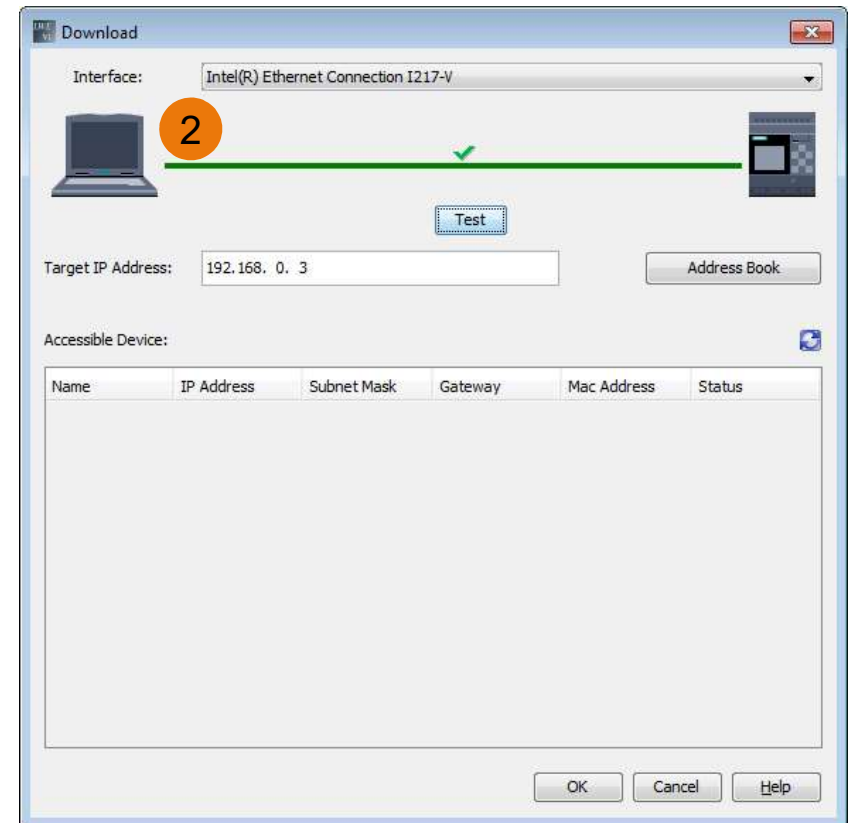
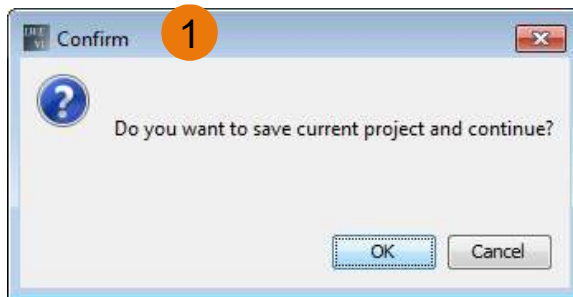
- A MicroSD card needs to be in the SD slot



## First steps with the LOGO! Web Editor

During the download several dialogs will pop up:

1. To save current project and continue?  
“OK” (or “Cancel”)
2. The download dialog like in LOGO! Soft Comfort V8



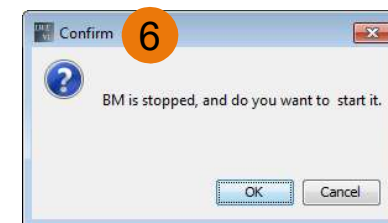
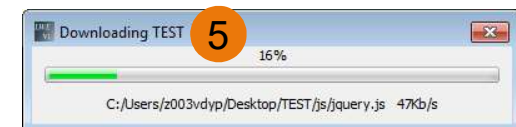
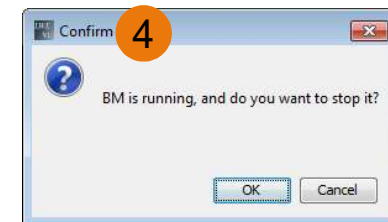
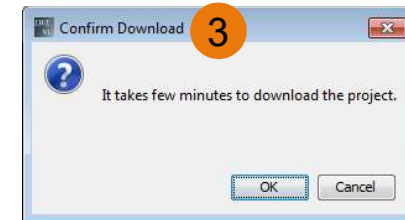


## First steps with the LOGO! Web Editor



3. A confirmation pop-up, that the download takes few minutes. The duration depends on the resolutions of the used images or gifs. (Do not skimp on the resolutions, because the result is important!)
4. An information, that the basic module is still running. For the download the basic module has to be in the STOP mode
5. Download-progress
6. Another confirmation pop-up to switch LOGO! 8 back to the RUN mode

Now the customized website is stored on the LOGO!



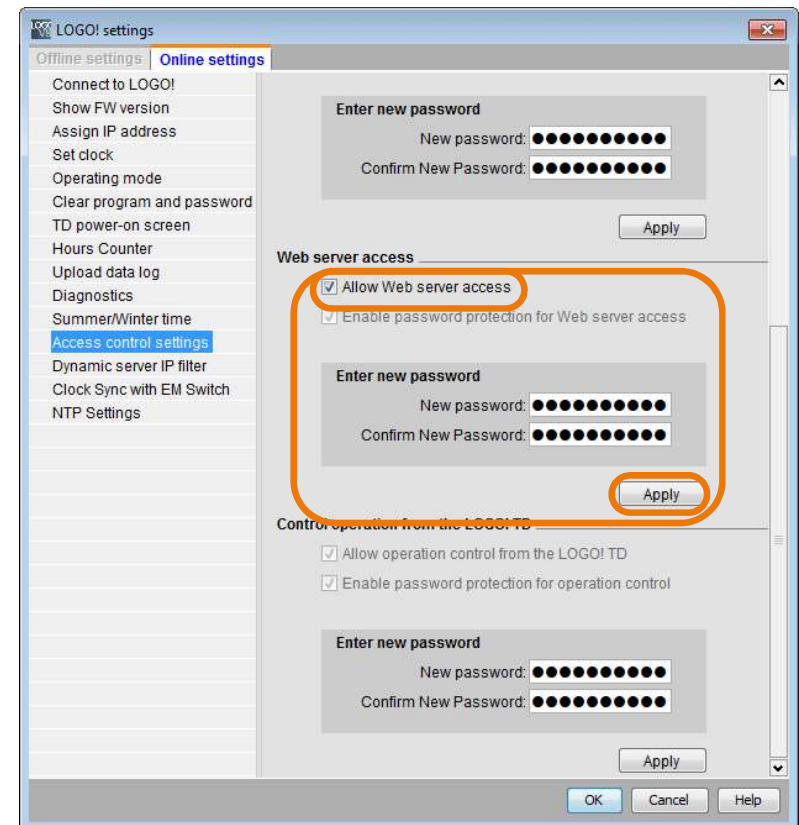
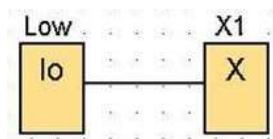
## First steps with the LOGO! Web Editor



In this example, the output Q1 is directly controlled by the „ON / OFF“ button, so there is just required a program, which sets the LOGO into the RUN mode.

The access control for the webserver must be enable.  
*„Tools – Transfer – Access control“*

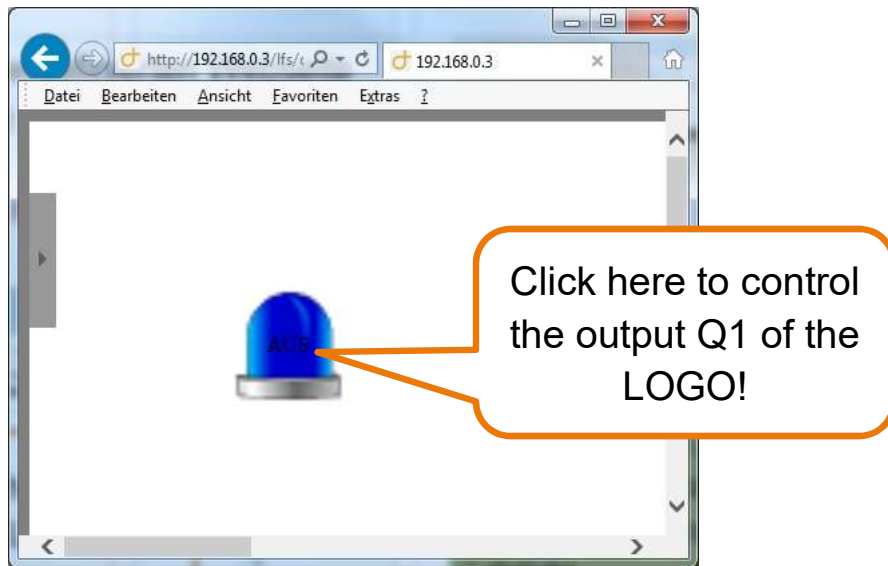
Download the minimal program on the LOGO!:



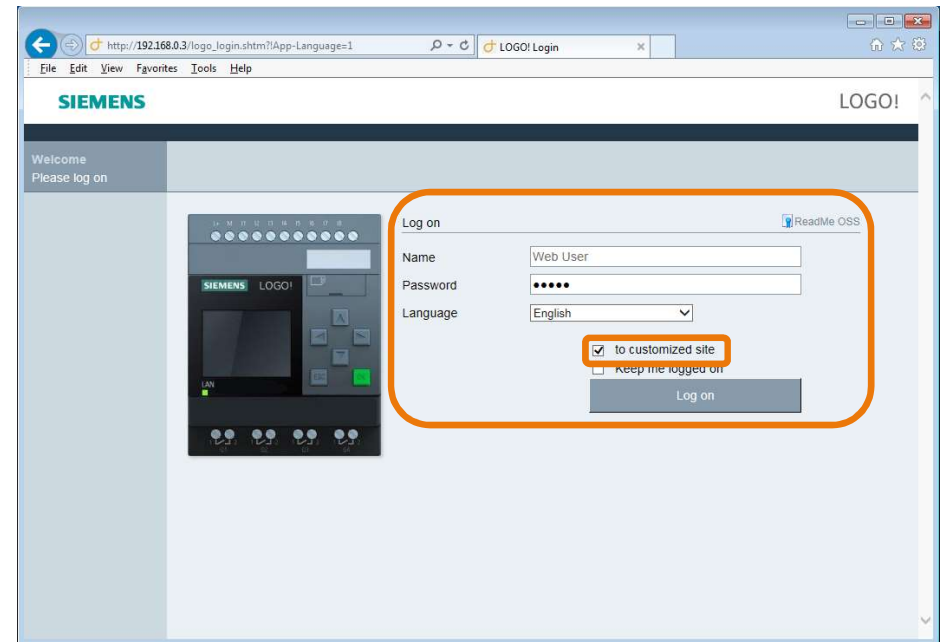
## First steps with the LOGO! Web Editor

Start your browser and enter the IP address of your LOGO!

You have to enter your configured password and enable *“to customized site”* to monitor your customized website.



**SIEMENS**  
*Ingenuity for life*



**Congratulation on the first customized website  
without any HTML knowledge!**

## First steps with the LOGO! Web Editor



### The next tutorial includes the following points:

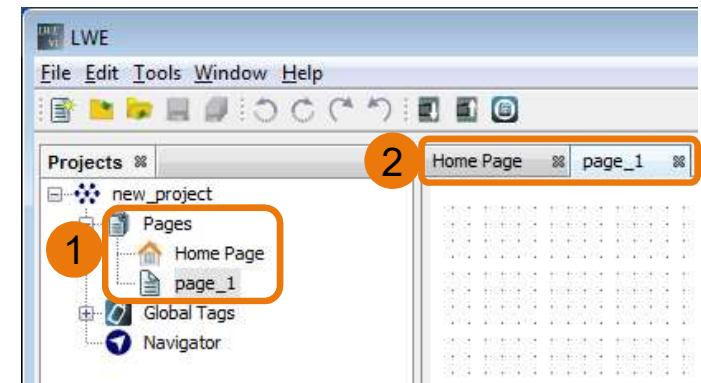
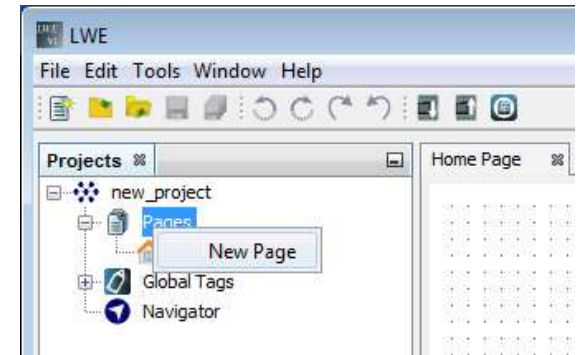
Adding new pages, changing resolution of pages, monitoring images and specifying the navigators:

### Adding new pages in the LOGO! Web-Editor:

To add a new pages, right click on “Pages” → “New Page”

To get to the desired page, there are two possibilities:

1. Double click on the respective page in the project pane
2. Click on the respective tap in the editor pane

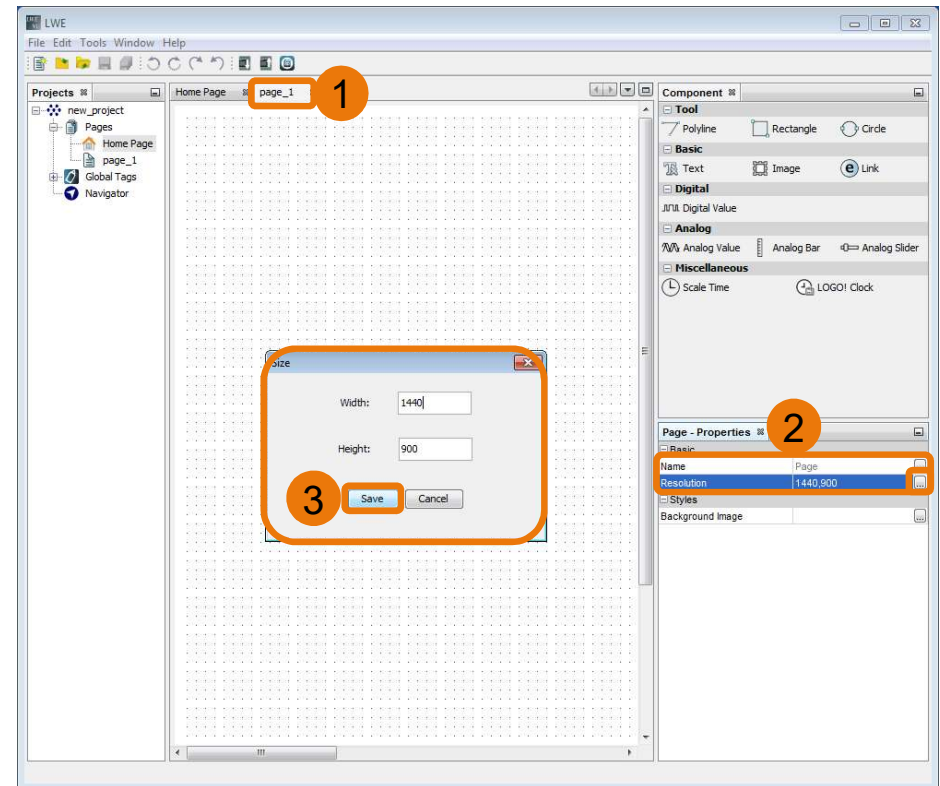


## First steps with the LOGO! Web Editor

### Changing the resolution of a page:

The resolution of a customized website can be scaled to any terminal device.

1. Switch to the new page
2. Click on “...” in the resolution properties
3. The resolution can be changed via width and height in the pop-up dialog. Configure the resolution like the display resolution of your terminal device and confirm by the “Save” button.

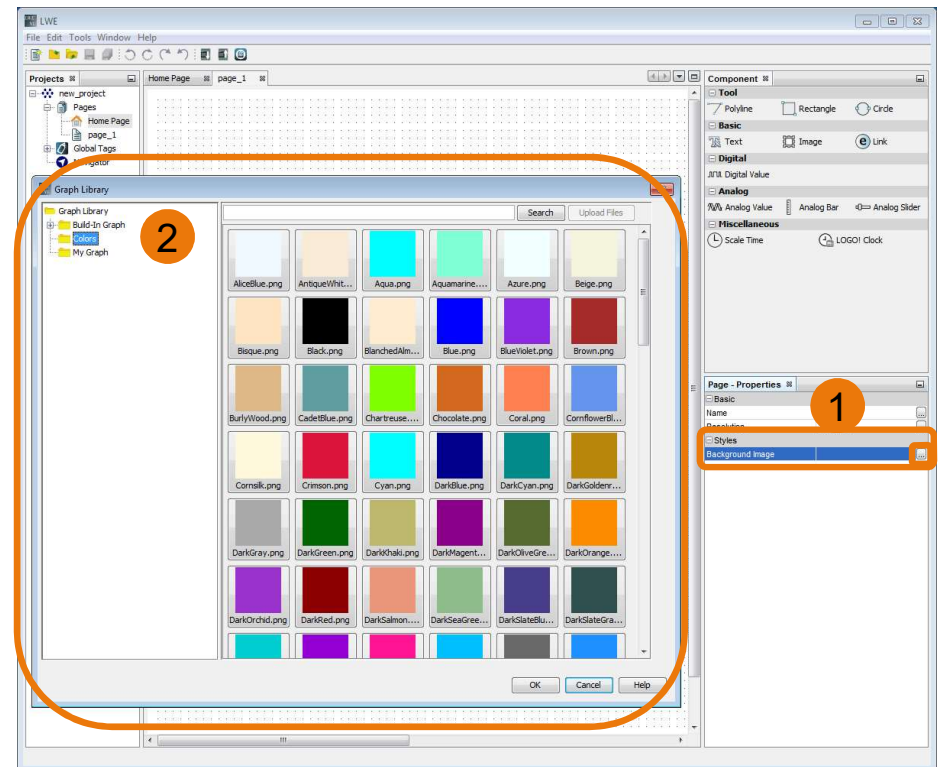




# First steps with the LOGO! Web Editor

## Changing backgrounds of a page:

1. Click on the “...” button at background image bar in the properties pane
2. Select an image from the Graph Library
  - Background colors are in the “Colors” file
  - Your own images will be in the “My Graph” file(See page 21 to know how to import your own images)



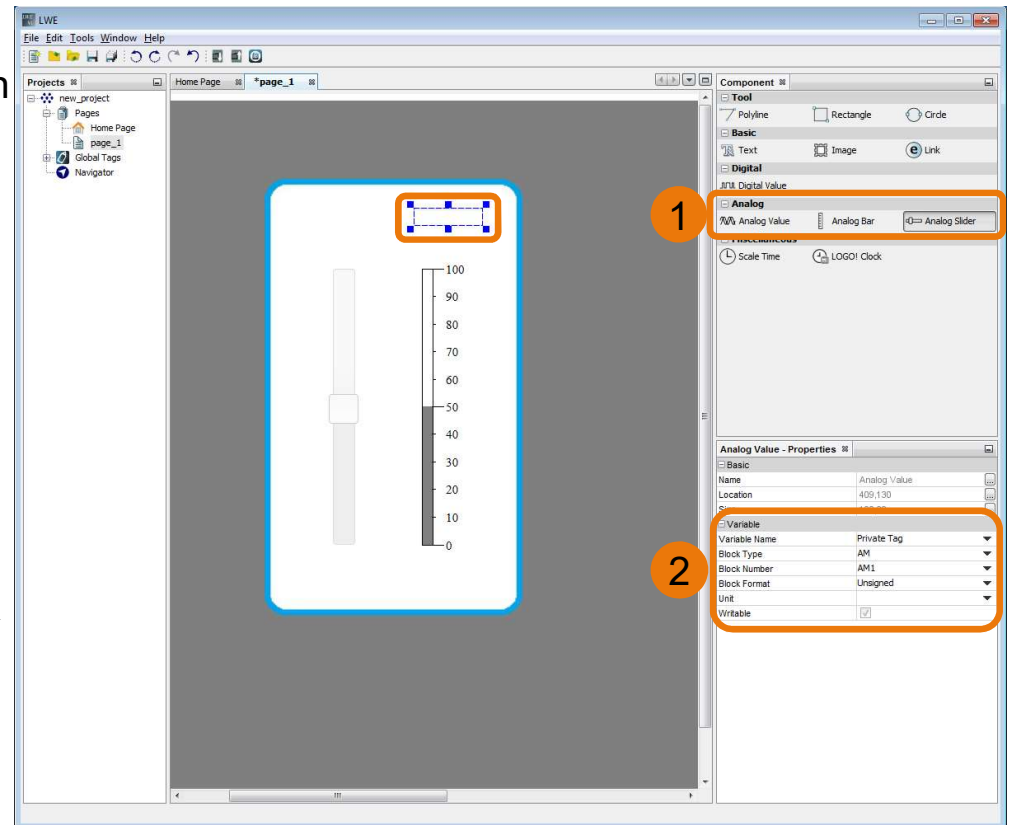
# First steps with the LOGO! Web Editor

## Analog - component

1. Add an “Analog Value”, an “Analog Bar”, and an “Analog Slider” to your new page
2. Click on the “Analog Value” and change the properties like in the following picture:

Variable	
Variable Name	Private Tag
Block Type	AM
Block Number	AM1
Block Format	Unsigned
Unit	
Writable	<input checked="" type="checkbox"/>

Specify for all three components “AM” as the Block Type and “AM1” as the Block Number.

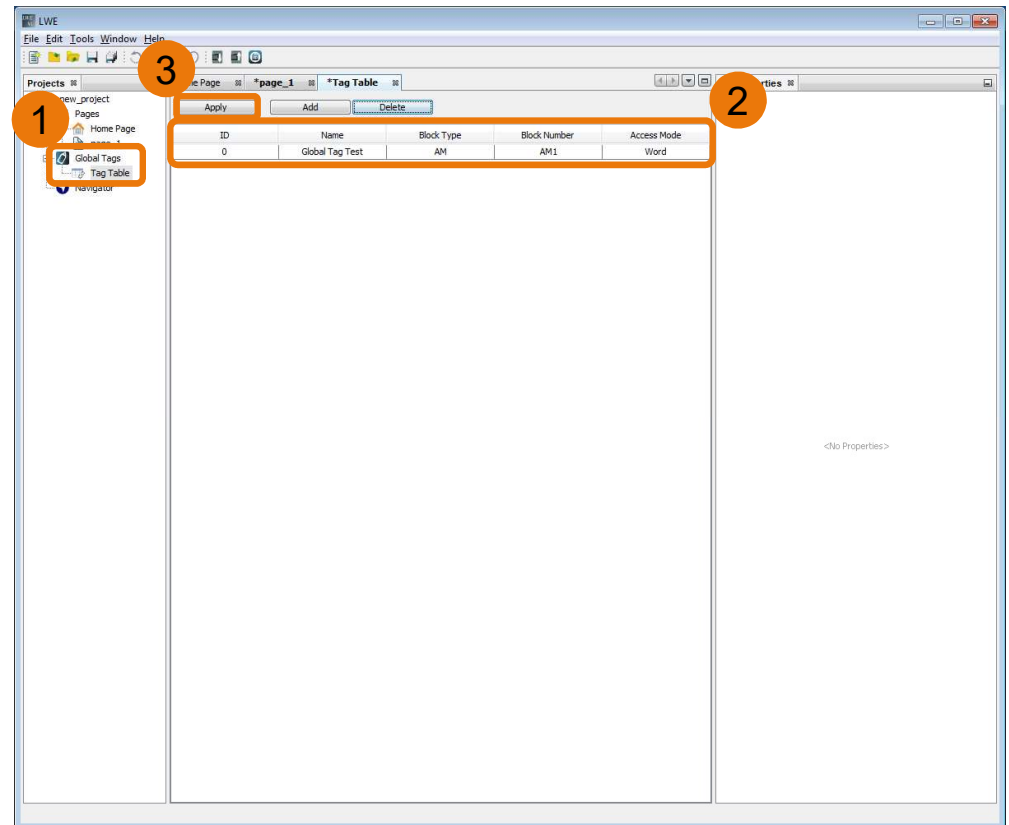


## First steps with the LOGO! Web Editor

### Creating Global Tags

1. Double Click on “*Tag Table*” in the project pane
2. Add a new tag and configure it like in the picture
3. Click on “*Apply*” to confirm the configuration

In the Tag Table can be specify the ID, name, Block Type, - Number and Access Mode. Once a tag is already used, it is not able to change or delete it. If you want to change it, the tag must not be selected at any variable.



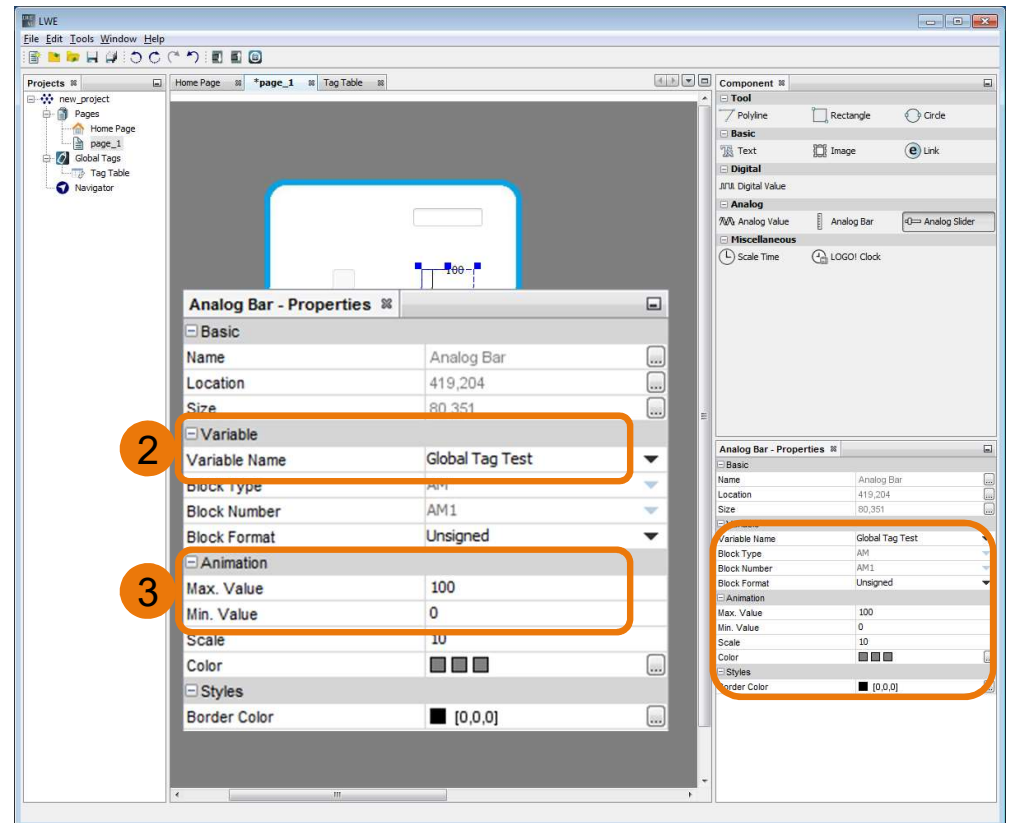
# First steps with the LOGO! Web Editor



## Applying Global Tags:

1. Create a global tag with the LOGO! Address "AM1"
2. Select the created global tag for the analog bar and analog slider
3. Both the analog bar and the analog slider can be specified by an interval. Set each to the limited Values 0 – 100.

So it is just necessary to specify the global tag name instead of Block Type and Block Number.



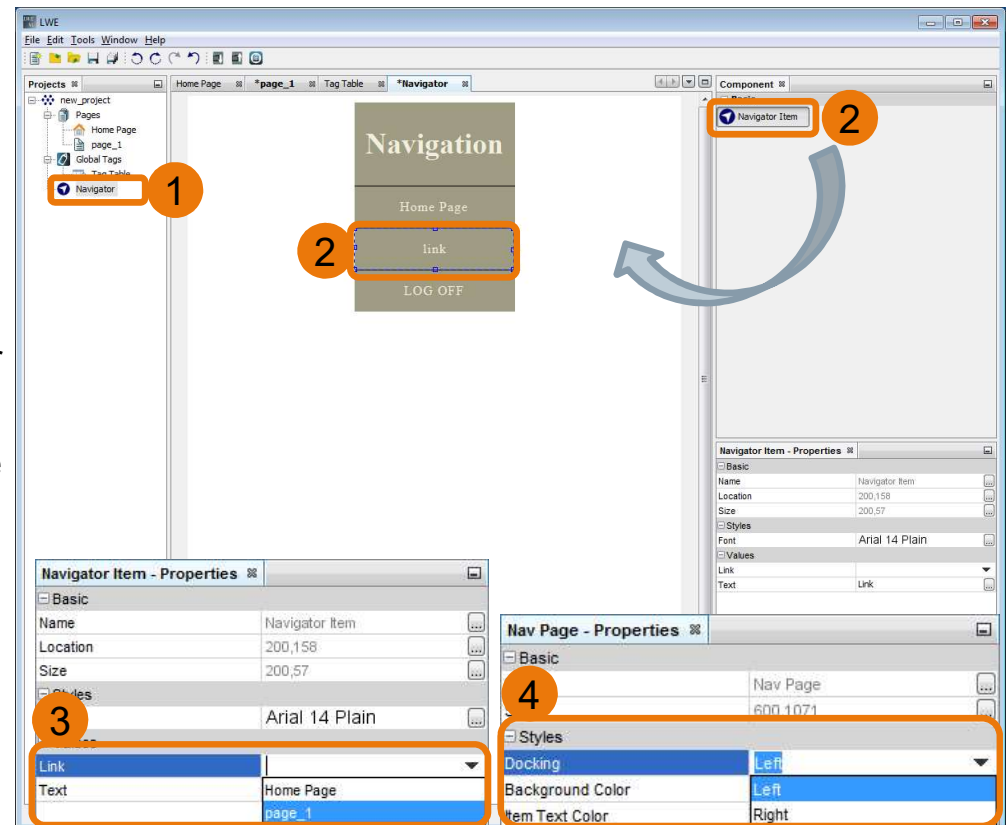
## First steps with the LOGO! Web Editor

### The Navigator in the LOGO! Web Editor:

If there are more than one page, it should be able to navigate to the other pages. LOGO! Web Editor offers a navigator to manage this task.

1. Double click on the Navigator at the Project pane
2. Drag and drop a “Navigator Item” into the editor pane for each page
3. Link a page (Here the first link was linked to the Home Page)
4. Configure “Nav Page – Properties”

Now download the website on your LOGO! and open your browser again.



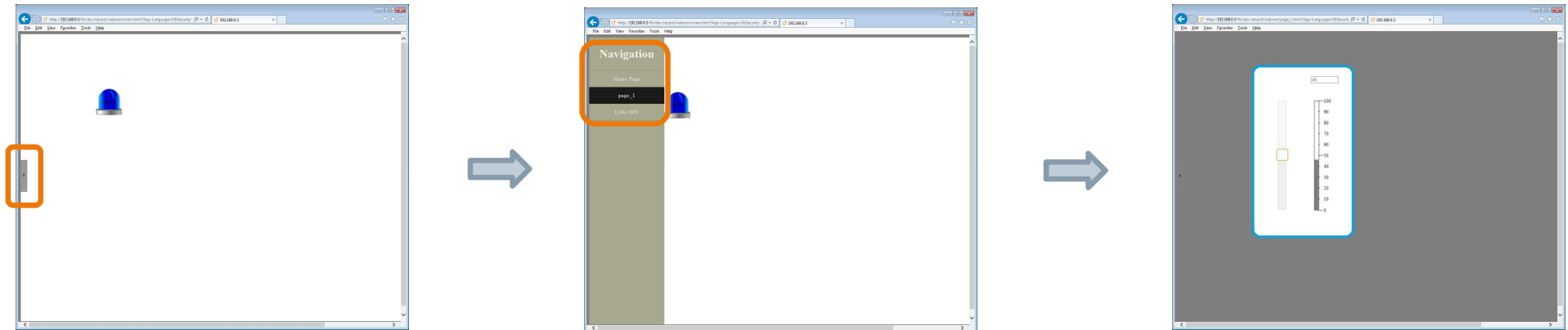
## First steps with the LOGO! Web Editor

1. The navigator is located on the left side.

**Hint:** The navigator can be docked on the left and right side of the customized website. Dock the navigator on the left side to ensure that the navigator is easier to locate at websites with different resolutions.

2. Click on the respective website to get to this website.

Click on “*page\_1*” to test the function of the navigator in your browser.  
(The name of a page can still be changed afterwards in the LOGO! Web Editor)



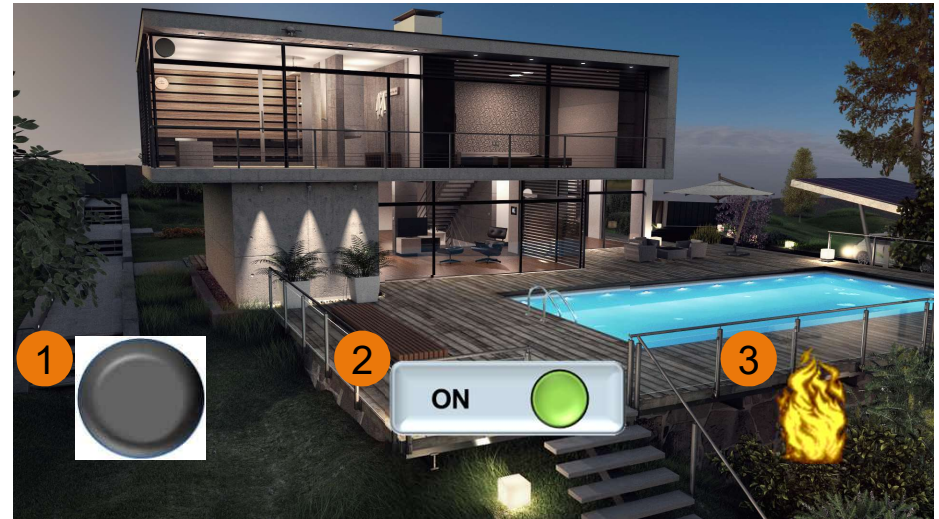


## Designing digital components

This is one of the most important feature for our customers. This feature enables the customized design of the website. The LOGO! Web Editor offers many possibilities.

Supported image formats in the LOGO! Web Editor:

1. JPG/JPEG: image (rectangular, nontransparent)
2. PNG: images in any shape (without frame)  
(GIMP can be used to design these images)
3. GIF/TIFF: animated images  
(GIMP can be used to design these animations)



Thank you for your attention

**SIEMENS**  
*Ingenuity for life*



Subject to changes and errors. The information given in this document only contains general descriptions and/or performance features which may not always specifically reflect those described, or which may undergo modification in the course of further development of the products. The requested performance features are binding only when they are expressly agreed upon in the concluded contract.

All product designations, product names, etc. may contain trademarks or other rights of Siemens AG, its affiliated companies or third parties. Their unauthorized use may infringe the rights of the respective owner.

**siemens.com**