

SIEMENS

Ingenuity for life

WinCC OA IOT Suite

empowered by
SIMATIC WinCC Open Architecture

siemens.com/wincc-ia-iot-suite

WinCC OA IOT-Box-SW

WinCC OA IOT-Box-SW for SIMATIC Nanobox (IPC2XX) and Industrial Linux (both not included).

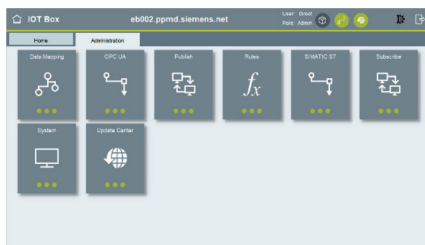
Included apps:

Dashboard, Mapping, OPC UA, Publish, Subscribe, S7, Update Center, Rules, System. Up to 1000 Tags, up to 2 user interfaces. Automatic updates of WinCC OA IOT-Box-SW and apps via IOT-OPA possible (requires separate IOT-OPA-SW license). Perpetual License.

1x WinCC OA IOT-Box-SW:
6AV6356-1AA31-7AA0

10 x WinCC OA IOT-Box-SW
6AV6356-1AA31-7AA1

20 x WinCC OA IOT-Box-SW
6AV6356-1AA31-7AA2



WinCC OA IOT Suite

WinCC OA IOT-OPA

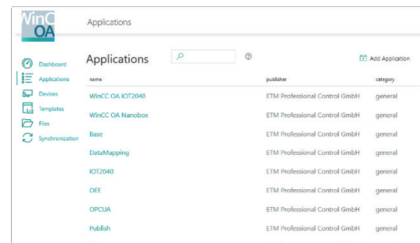
Allows secure administration of devices running WinCC OA IOT-Box-SW. Includes update option for WinCC OA IOT-Box-SW and Industrial Linux (Equivalent to SUS). Can be installed as On-Premise or in cloud. Operating System is Linux. Subscription license.

WinCC OA IOT-OPA-SW for update and administration of up to 10 devices. Connection to IOT-Repository included.
6AV6356-1BA31-7BA0

WinCC OA IOT-OPA update extension for 10 further devices
6AV6356-1BA31-7BA1

WinCC OA IOT-Repository

Enables distribution of WinCC OA IOT-Box-SW-packages and App-packages to WinCC OA IOT-OPAs. Connections to additional IOT Repositories are free of charge. Device management is excluded. Includes connection to WinCC OA IOT-OPAs. Can be installed on premise or in cloud. Operating System is Linux. Prerequisites for the use are valid WinCC OA IOT-Box-SW licenses as well as a corresponding right to update devices (bound to the IOT-OPA license).



WinCC OA IOT-Repository

WinCC OA IOT Suite empowered by SIMATIC WinCC OA

Scope of solution:

- Targets for **brownfield retrofit**
Cloud usage optional
- Provides **infrastructural services** to explore **new ways of deployments**

IOT-Repository:

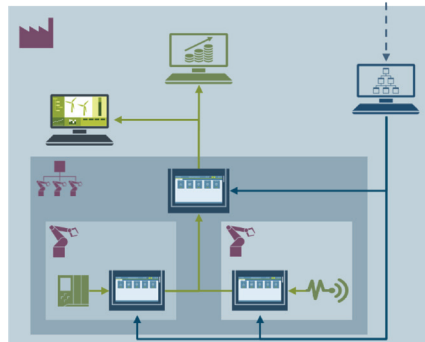
- Cloud-based for simple distribution of 3rd party apps & updates

Major USPs of IOT-OPA:

- Automated maintenance of devices, SW, OS
- Enhancing machines after commissioning
- Enables additional/new business models

Major USPs of IOT Box SW:

- Commissioning **within 1h by electrician**
- Easy collection and preprocessing of data
- Local visualization Forwarding information



Technical features of IOT-OPA:

- **Central repository** for SW, Apps and OS incl. patches
- Device management including **automatic patch deployment**
- File exchange/storage for back-up/restore and templates

Technical features of IOT Box SW:

- **Apps** are WinCC OA applications
- Based on a WinCC OA IOT Framework Standard **WinCC OA**
Based on **SIEMENS Industrial OS**

Based on Siemens industrial Hardware:

- In 1st step hosted on Siemens IPC2xx only
- Will be delivered as SW only as well

Update mechanism:

- **Devices and SW/Apps supporting different states**
- Devices can be operated **stand alone as well**
- **System established officially inside SAG** (ATOS approved)

For the secure operation of Siemens products and solutions, it is necessary to take suitable preventive action (e.g. cell protection concept) and integrate each component into a holistic, state-of-the-art industrial security concept. Third-party products that may be in use should also be considered.

For more information about industrial security, visit <http://www.siemens.com/industrialsecurity>.

ETM professional control GmbH
A Siemens Company
Marktstrasse 3
7000 Eisenstadt
Austria

+43-2682-741-0
www.etm.at
info@etm.at

Subject to change 03/20