

**SIEMENS**

Get our press kit here  
[www.siemens.com/press/sps24](http://www.siemens.com/press/sps24)



We combine the  
**real and digital worlds**



Get our press kit here  
[www.siemens.com/press/sps24](http://www.siemens.com/press/sps24)

**SIEMENS**

# Supercharging automation – the next generation

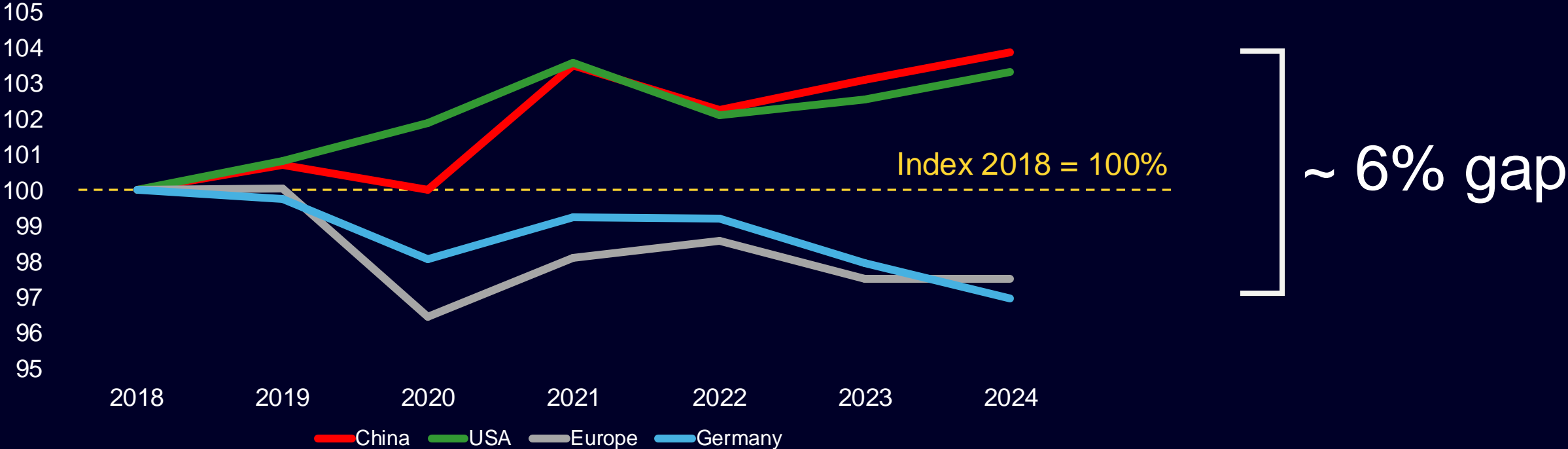
Siemens Press Conference at SPS 2024

Rainer Brehm, CEO Siemens Factory Automation

# EU and German industry need innovation for more productivity

Significant decline in productivity

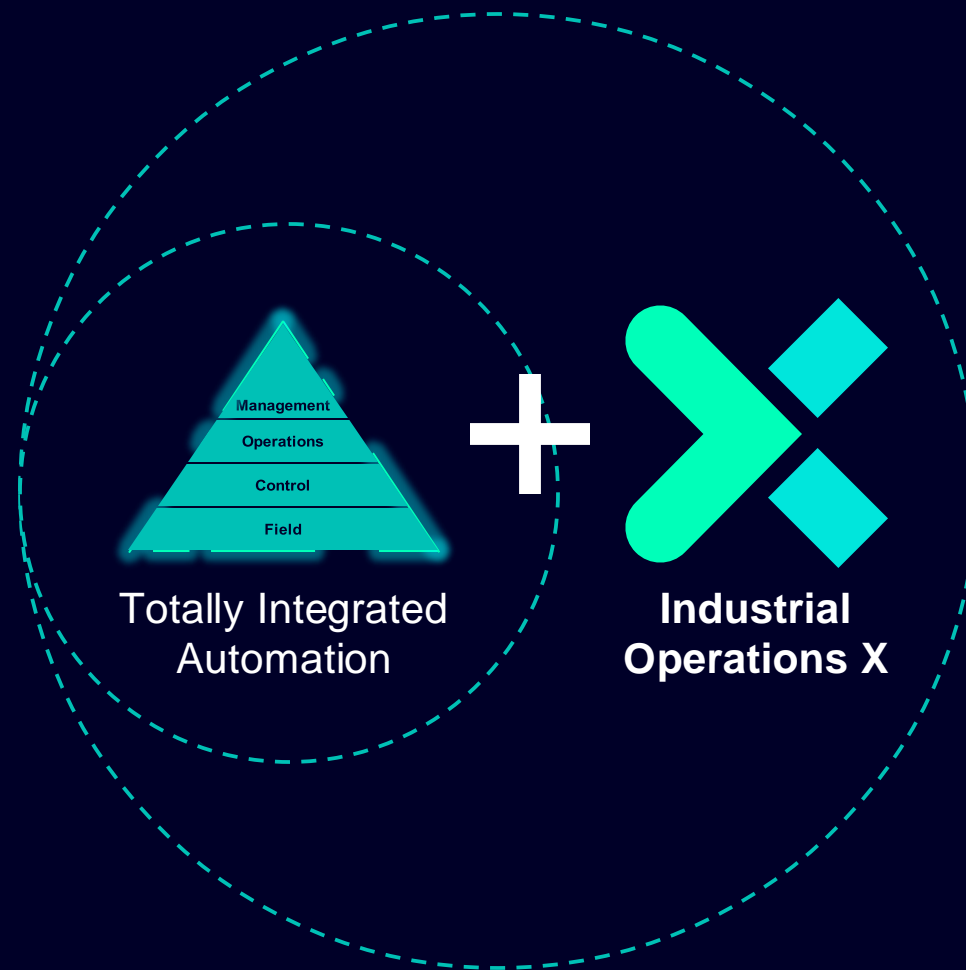
### Total Factor Productivity 2018 – 2024



Source. TED Conference Board, Macrobond

# The next generation of Siemens automation is here

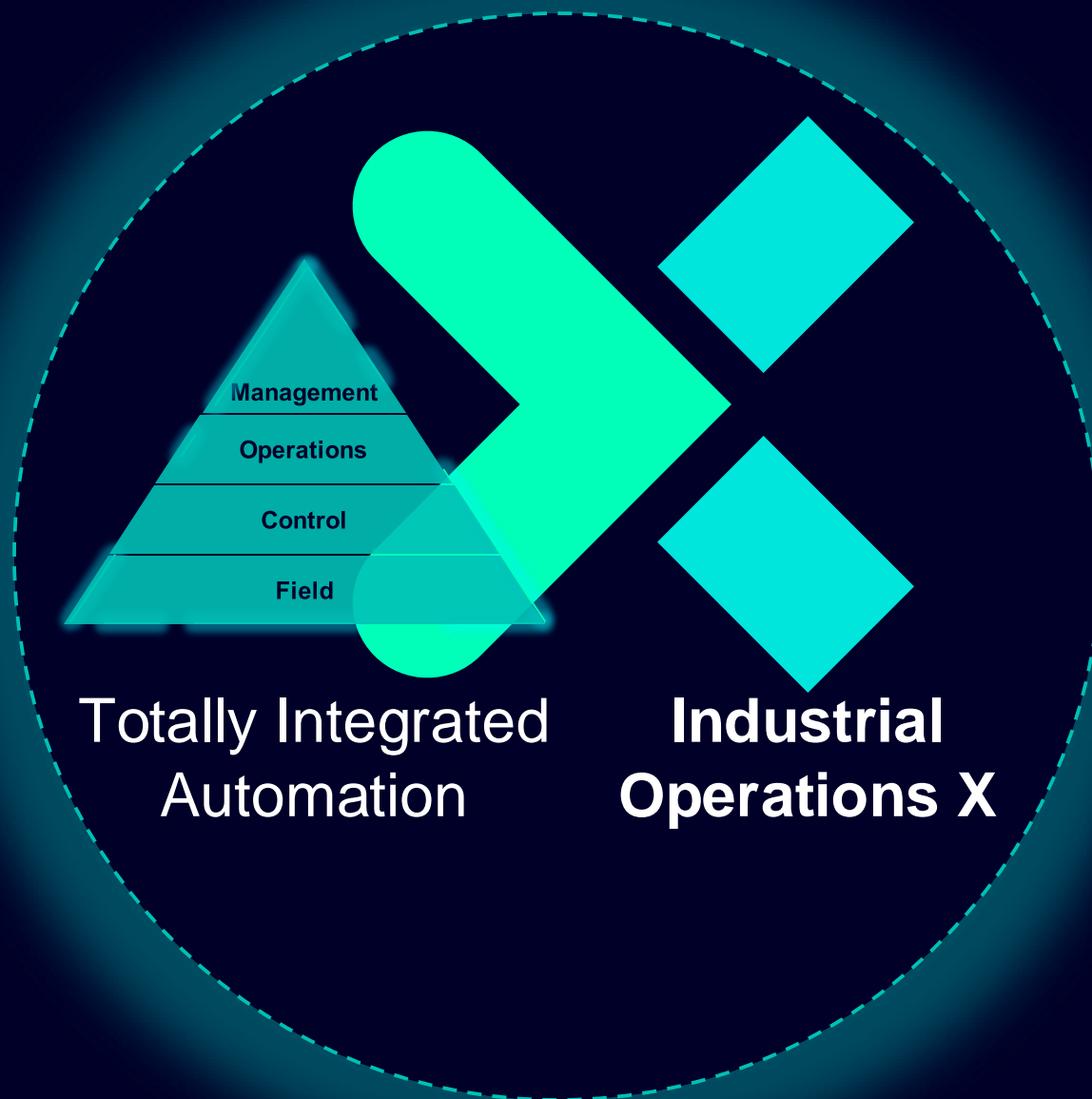
Innovation across all levels on Siemens Xcelerator



# The next generation of Siemens automation is here

Innovation across all levels on [Siemens Xcelerator](#)

- 
- Higher productivity
  - Higher adaptability



# Siemens creates next generation of automation

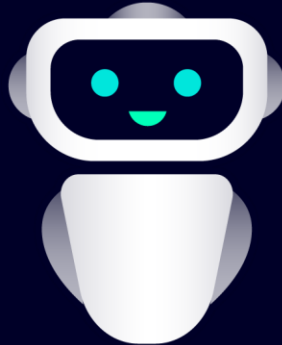
**Boost  
performance**  
of automation



**Accelerate  
industrial AI**  
for every entry level



**Expand  
GenAI**  
offering for industry



# Performance boost across the entire automation portfolio

Elevating performance on field, control, and operation levels

## Operation

Edge Management System	SCADA	Network Management	Automation Engineering System	Process Control Systems	Energy Management	Maintenance	Cyber-security
NEW	NEW		NEW	NEW			NEW

## Control

Controller	HMI	IPC	Industrial Communication	Motion Control	CNC
NEW	NEW	NEW	NEW	NEW	NEW

## Field

Robotics/AGVs	Industrial Controls	Distributed I/O	Drive Systems	Switch Gears	Industrial Identification and Locating	Process Instrumentation	Process Analytics	Power Supply and Distribution
NEW	NEW	NEW	NEW	NEW	NEW			

# Field – Revolutionizing starter technology



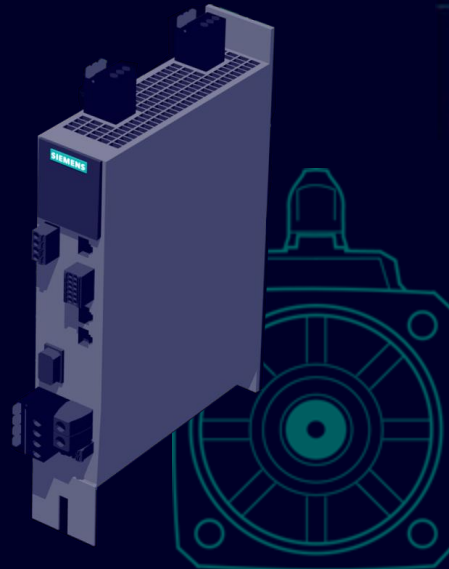
**E-Starter**  
for Simatic  
ET 200SP

**NEW**



**Intelligent  
Link Module**  
Sirius 3RC7

**NEW**



**Next generation drives –  
entry to premium class**  
Sinamics S200/210 / Sinamics G220

## **Simatic ET 200SP e-Starter**

- 3x smaller footprint
- Up to 1000x faster
- No wear
- Based on silicon carbide

## **Intelligent Link Module**

- Data transparency down to field level
- Integrated into TIA



# Field and Control – Completing the comprehensive Digital Twin of the machine



Digital Twin  
of Drives  
DriveSim Engineer

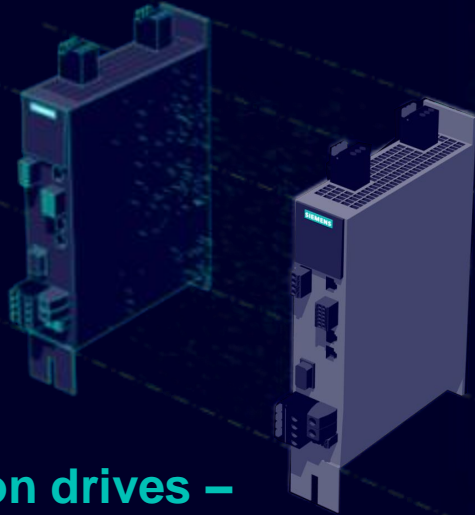


Next generation drives –  
entry to premium class  
Sinamics S200/210 / Sinamics G220

# Field and Control – Completing the comprehensive Digital Twin of the machine



**Digital Twin  
of Drives**  
DriveSim Engineer



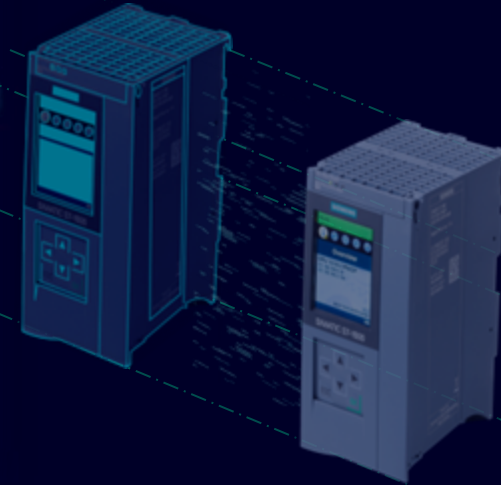
**Next generation drives –  
entry to premium class**  
Sinamics S200/210 / Sinamics G220

**NEW**

**Up to  
50%**

less unproductive  
testing

**Digital Twin  
of PLC**  
PLCSIM Advanced



**PLC**  
Simatic S7-1500

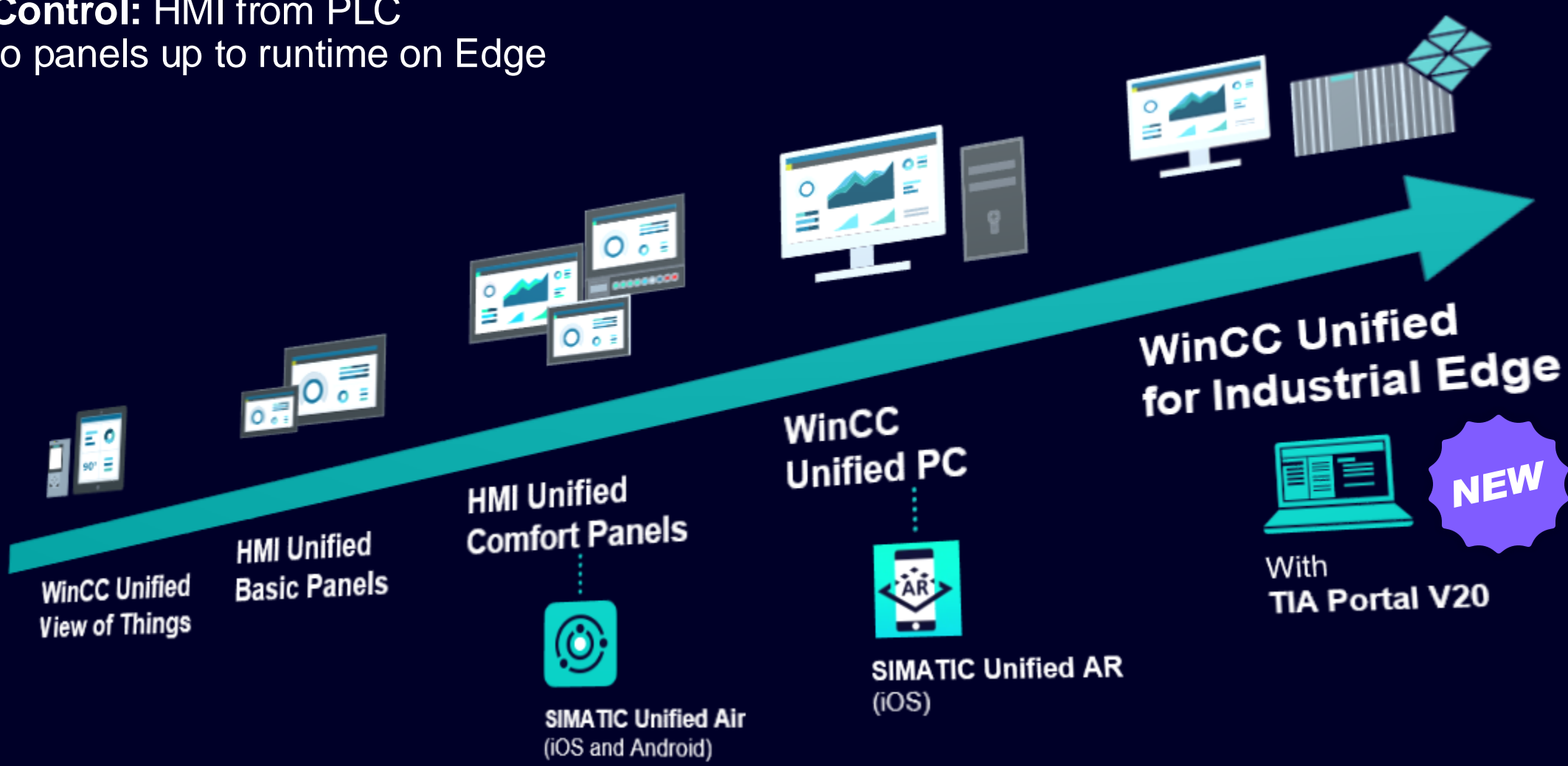


with TIA Portal V20

# Control – Simatic PLCs across the entire spectrum from basic to high-end applications and from hardware-based to software-defined

Hardware-Defined Automation		Software-Defined Automation on Edge	
<b>Hardware PLC</b> HW/SW bundle, with TIA Portal V20 	<b>Software Controller</b> PLC SW on Siemens IPC	<b>Virtual PLC (S7-1500V)</b> PLC in container on Edge	
<p>Next generation of Simatic S7-1200: <b>&gt;200%</b> performance and enhanced motion</p> <p><b>NEW</b></p>	<p>Simatic S7-1500: <b>&gt;200%</b> higher performance and TÜV-certified cybersecurity</p> <p><b>NEW</b></p>	<p>One of the fastest Simatic PLCs in the market – now with <b>even better motion functionalities</b></p> <p><b>NEW</b></p>	<p>The most independent Simatic PLC – <b>with safety, on Siemens Xcelerator</b></p> <p><b>NEW</b></p>

# Control: HMI from PLC to panels up to runtime on Edge

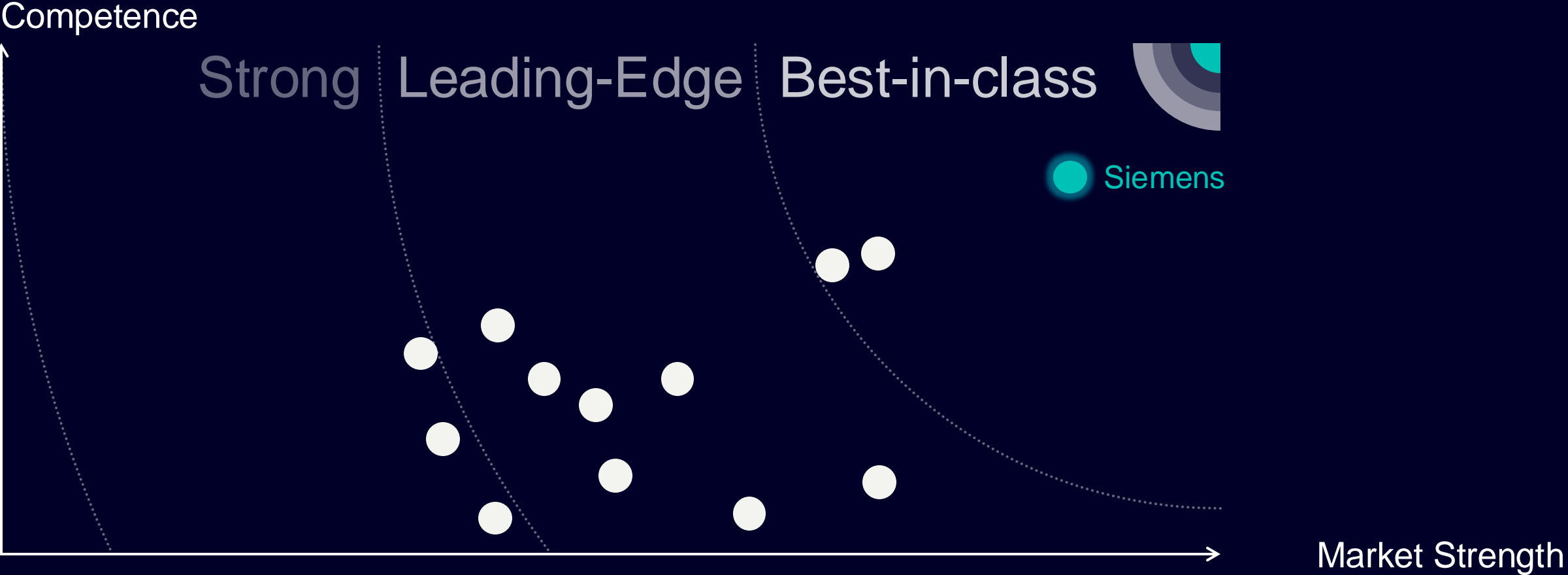


**Scalability – redundancy – seamless data exchange with IT – open interfaces**

**Control:** next-generation IT/OT connectivity and cybersecurity for OT



**Operation:** Industrial Edge best-in-class for open digital platforms for industrial edge management

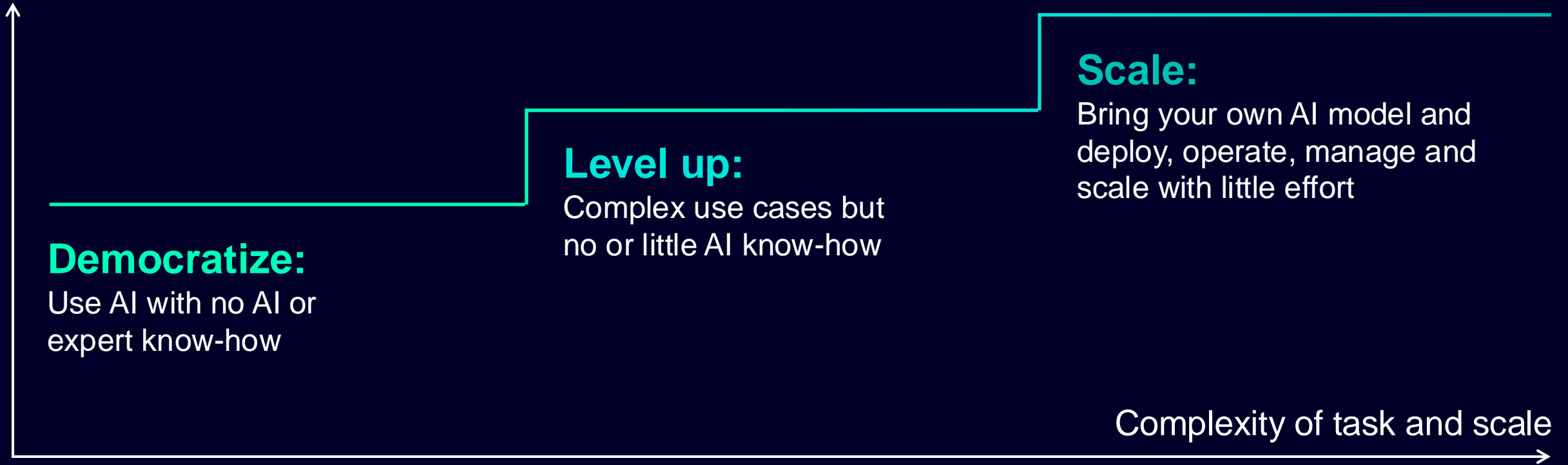


Source: PAC 2024

# Siemens augments automation with AI over all levels of applications and know-how



Your AI know-how



Together with strong partners

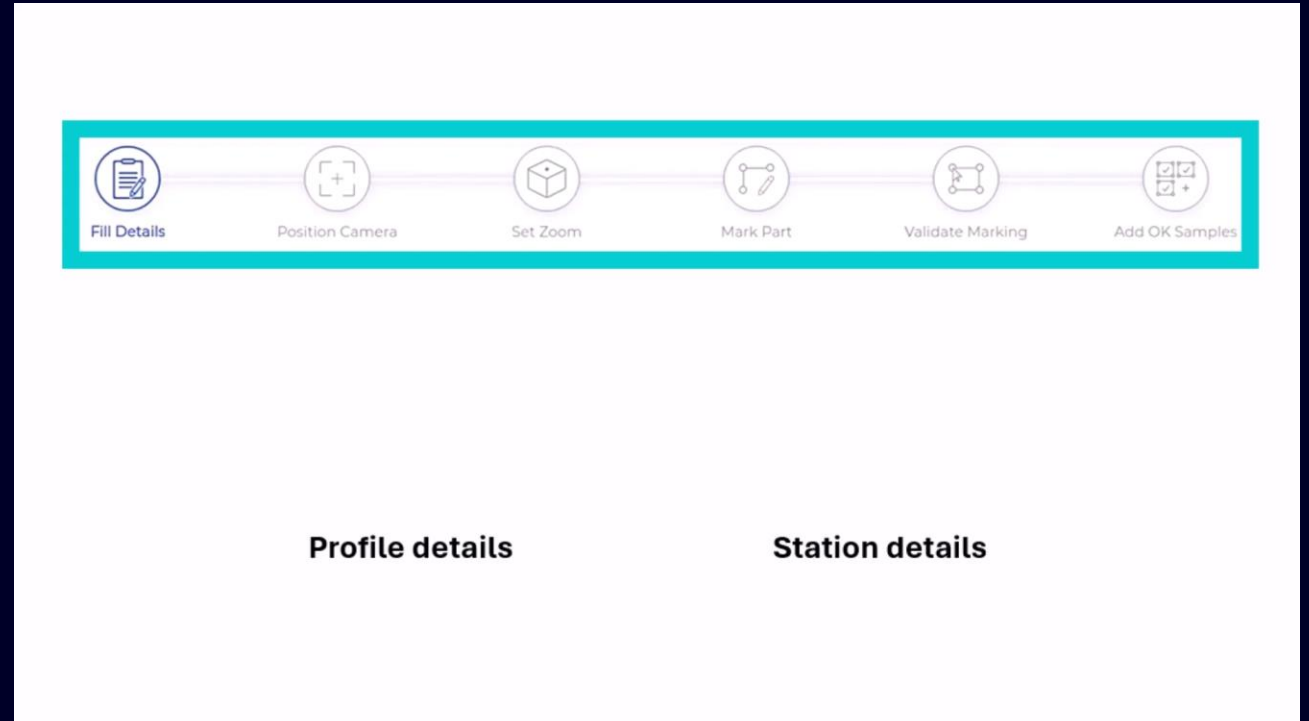




# Inspekto

## 50x faster deployment

- First autonomous vision product
- Easy to adapt
- 10x lower Total Cost of Ownership
- Connectivity to automation systems



**No know-how in AI or machine vision needed**

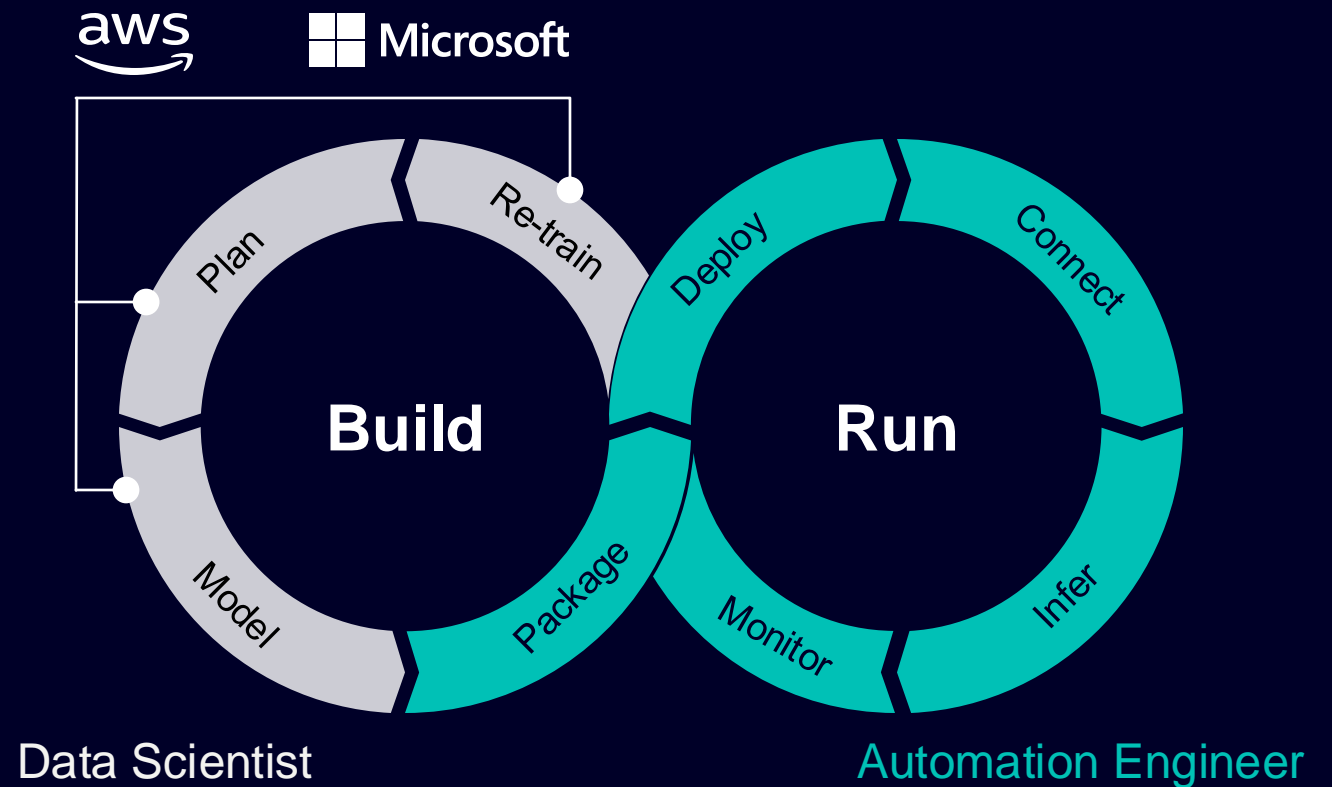




# Industrial AI Suite

## 25x faster AI execution

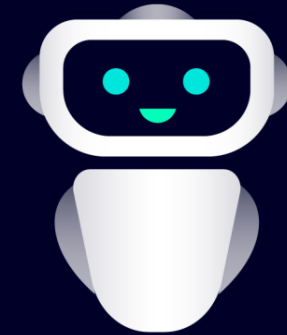
- Scaling and managing AI models easily across multiple locations
- Most complete infrastructure for Machine Learning (ML) operations
- Seamlessly integrates with leading cloud-based ML environments



With IPC BX-59A and  **NVIDIA GPU**



# Industrial Copilots will support humans along the industrial value chain



## Design

Break new ground in creativity

## Planning

Plan more efficiently than ever before

## Engineering

Engineering without repetitive tasks

## Operations

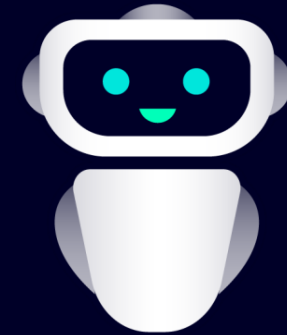
Transparency at your fingertips

## Services

Know it all – before it happens



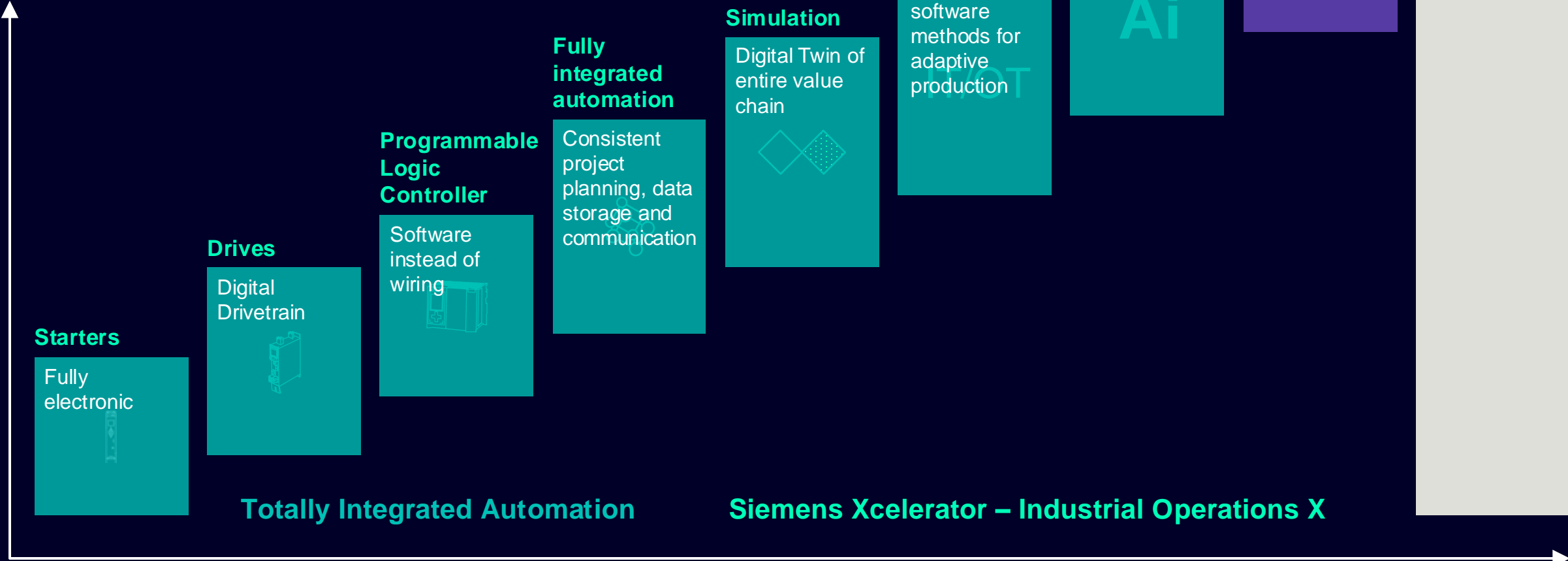
# Industrial Copilots will support humans along the industrial value chain



<sup>1</sup> On-premises with  NVIDIA GPU

# Supercharging automation for the next steps into the future

Performance



Intelligence