



E-HOUSE SOLUTIONS

Prefabricated electrification – ready when you are

The fast-track project approach for industry and utilities.

[siemens.com/e-house](https://www.siemens.com/e-house)

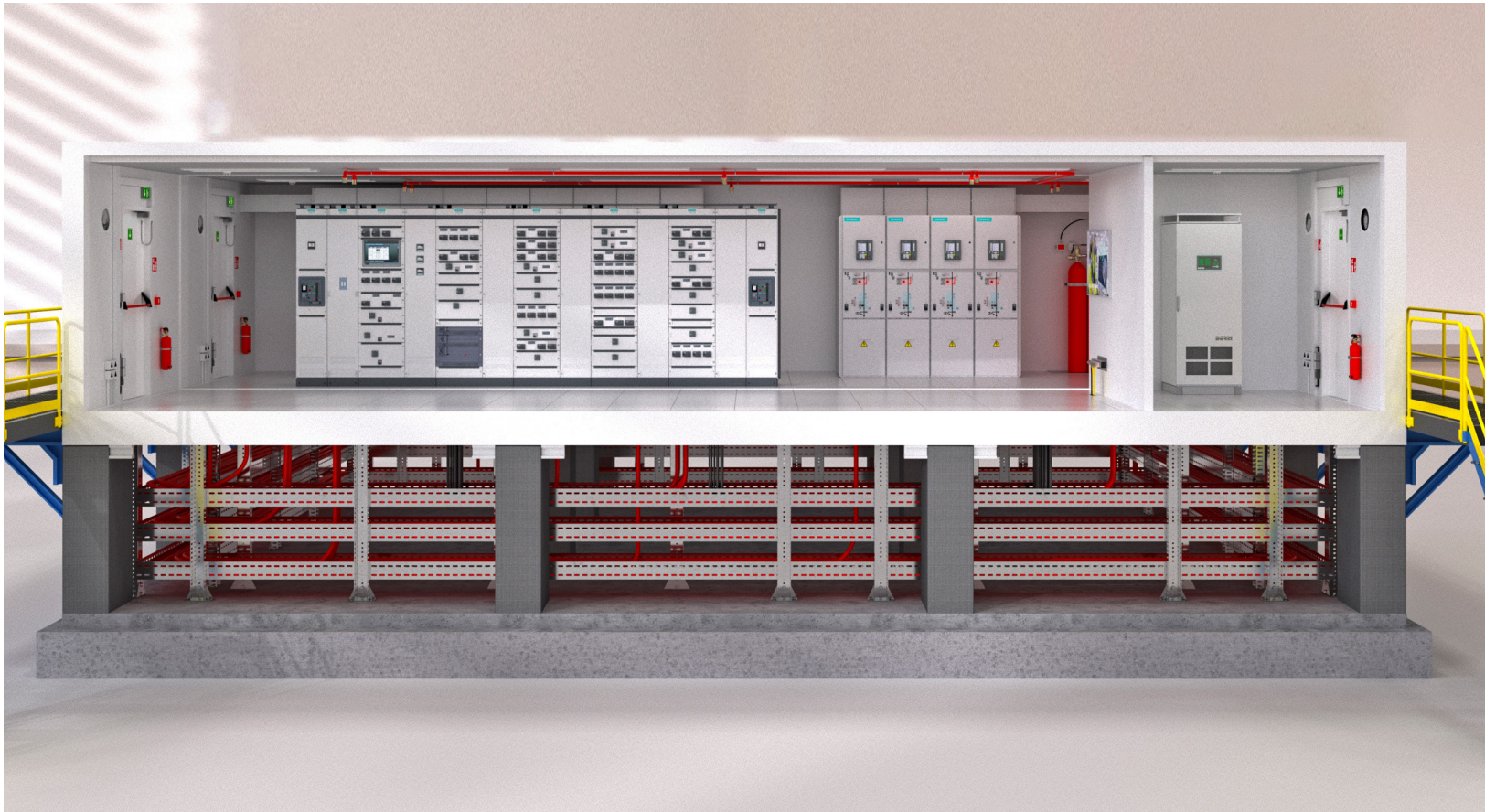
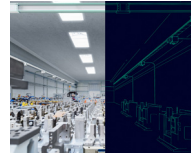
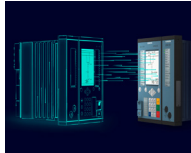
SIEMENS

Tailored layout: Smart, functional, and compact

Detailed expertise

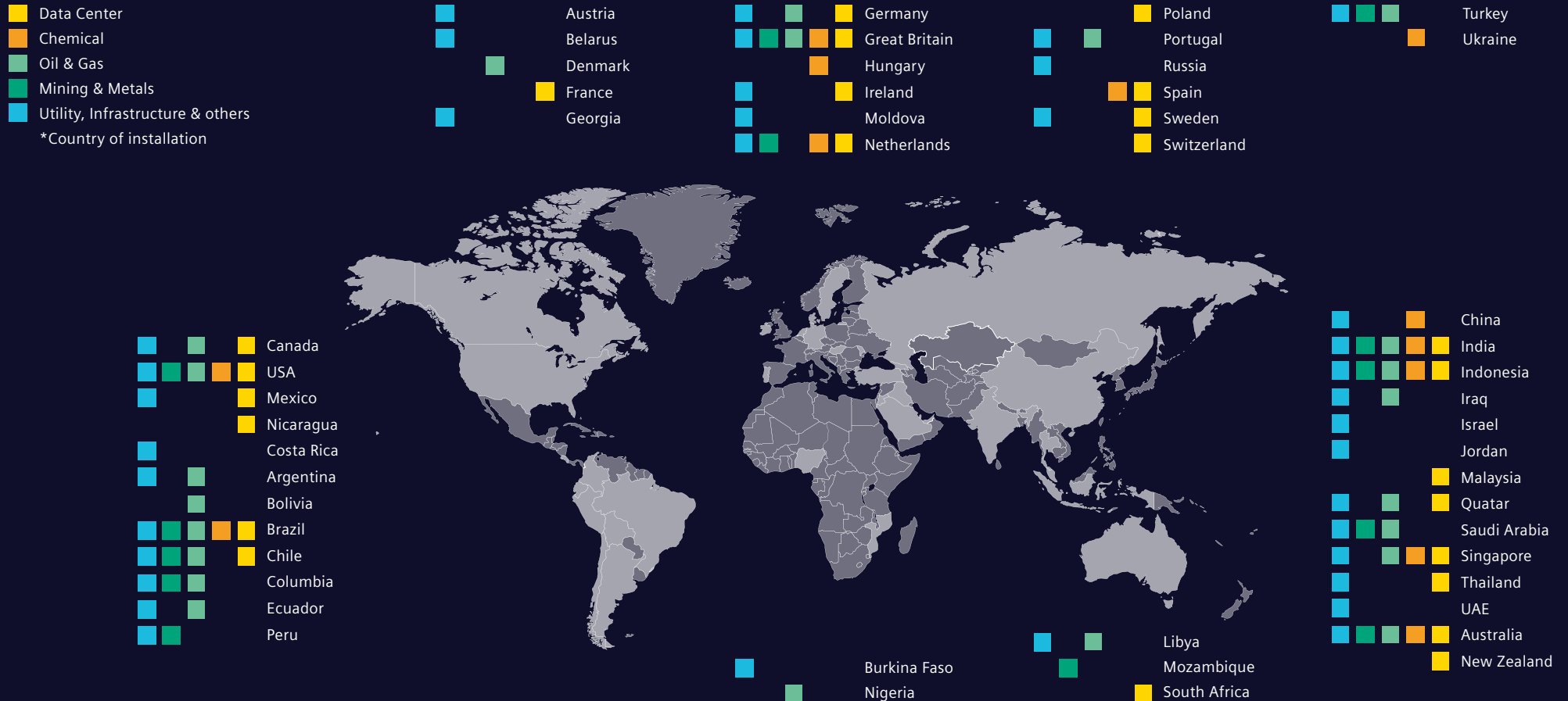
We put all our expertise to work so we could offer you a solution that's exactly right for your application. And that pays off for you – because we select just the right systems and components, match them flawlessly, and

install them so they're optimally accessible in the most compact space possible. And you can count on a service life of 30+ years. All this in a one-stop solution from a single-source partner.



Your global partner for E-House solutions

We've successfully delivered more than 1,000 E-House solutions worldwide over the last 15 years.



We are present in 24 regional hubs

- HQ Erlangen (DE)
- Budapest (HU)
- Jakarta (ID)
- Lisbon (PT)
- Mexico D.F. (MX)
- Oakville (CA)
- Raleigh (US)
- Singapore (SG)
- Abu Dhabi (AE)
- Buenos Aires (AR)
- Jedha (SA)
- Manchester (GB)
- Milano (IT)
- Prague (CZ)
- Santiago de Chile (CL)
- The Hague (NL)
- Bogota (CO)
- Istanbul (TR)
- Lima (PE)
- Melbourne (AU)
- Mumbai (IN)
- Qatar (QA)
- Sao Paulo (BR)
- Tres Cantos (ES)

Solution Engineering and Project Management

Our expertise for your project needs

Experience and knowledge provides us with the insights we need to find the right electrification solution for you – supported by the global Siemens E-House community's ability to deliver the expected quality on time. Throughout the entire project, one of our certified Project Managers serves as your single point of contact.

Seven steps from design to operation

Watch the E-House video online:

[siemens.com/e-house-fastandmodular](https://www.siemens.com/e-house-fastandmodular)

Smart concept for cost optimization

When it comes to the total cost of your electrification solution, an E-House has several built-in advantages, not the least of which is its smart design.

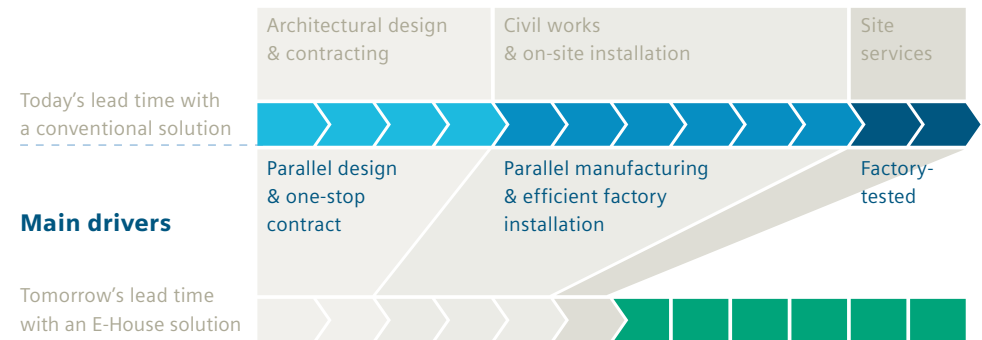
Another results from flattening your on-site labor curve, because all interfaces and subcontractors are managed by the Siemens project team. And you don't have to be concerned about adverse weather or site conditions, because we deliver a comprehensive solution built in an optimized factory environment by our highly efficient experts.

It's a different project with an E-House

	E-House	Conventional substation
Design and planning	Architectural design by Siemens (footprint-optimized design)	Architectural design by architects (early and oversized civil design)
Construction phase	Fabrication off-site in-factory environment	Civil construction on-site
Equipment installation	In-factory environment by certified personnel	Construction site conditions
Auxiliary systems	Installation coordinated by Siemens	Companies contracted locally and coordinated by site management
Testing and acceptance	Pre-commissioning, testing, and LoP closing prior to shipment	Inefficient mix of installation, testing, and commissioning

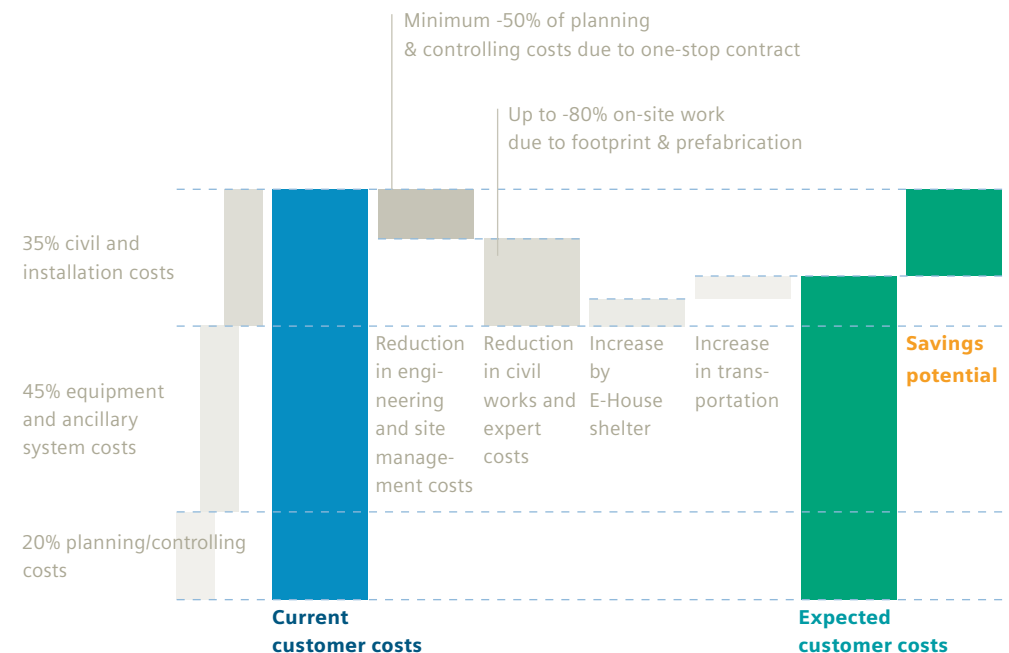
Lead time to energization – reduced by up to 50%

Scenario simulation with a conventional solution and a prefabricated solution



E-House project costs – up to 20% in savings

Expected CAPEX reduction with prefabricated solutions



Added **value** by Siemens

Your **E-House advantages**

- Smart E-House solutions reduce CAPEX in direct comparison with conventional substations
- An E-House approach speeds up overall project lead time
- Reduced EHS risks on-site
- Plug and play installation instead of time-consuming construction on site

Your **Siemens E-House advantages**

- World-class technology and comprehensive product portfolio
- A single point of contact from ordering to execution saves you resources
- Local experts in project management and engineering supported by global experience
- Global site services for installation supervision
- Global footprint for site services and after-sales service

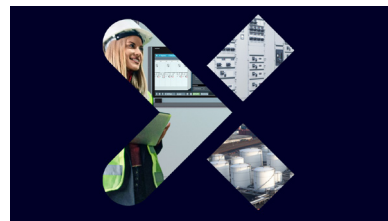
Your **digitalization advantages**

Electrification X – Asset Management or **SIMARIS control** can make your data digital and your E-House operation easy.

[Electrification X – Asset Management](#)



[SIMARIS control](#)



Worldwide **references**

Chemical industry

Customer

thyssenkrupp Industrial Solutions (tkIS)

Highlights

- 4,500 m² total footprint
- 7 E-House substations
- 90 transportable modules
- Harsh environment (–28° C) with overpressure and fire suppression system Sinorix1230



Mining and minerals

Customer

Southern Copper Corporation – Grupo Mexico

Highlights

- 2,200 m² total footprint
- 7 E-House substations, includes 3 2-level E-Houses
- 33 transportable modules
- Harsh environment (altitude >2,000 m)



Utilities

Customer

Georgian State Electrosystem (GSE)

Highlights

- 900 m² total footprint
- 14 E-House substations
- 15 transportable modules
- Short delivery period, transport and site services



Watch the “Anagold” video online:

[siemens.com/e-house-plugandplay](https://www.siemens.com/e-house-plugandplay)

E-Houses support your **sustainability projects**

Resource Efficiency

Reduced civil works

Compact design saves foundation work and construction materials.

Enhanced circularity

Maximizing recyclability due to usage of steel compared to conventional civil buildings.

Reduced travel and transportation

Reduced emissions due to less travel by specialists and bundling of equipment transport.

Construction & Operation

Optimized use of land

Footprint optimization due to compact design of transport modules.

Renewable energy concepts

Photovoltaic systems reduce energy consumption of the E-House on project-specific bases.

Ecological operating media

Deploying ecological refrigerant gases and sustainable extinguishing agents.



Published by

Siemens AG
Smart Infrastructure
Electrification & Automation
Mozartstraße 31c
91052 Erlangen
Germany

For the U.S. published by

Siemens Industry Inc.
3617 Parkway Lane
Peachtree Corners, GA 30092
United States

**For more information,
please contact**

E-mail: e-house.si@siemens.com

Article No. SIDS-B10075-00-7600

BBA P1645-010 BR 1023

© Siemens 2025

Subject to changes and errors.

The information given in this document only contains general descriptions and/or performance features which may not always specifically reflect those described, or which may undergo modification in the course of further development of the products. The requested performance features are binding only when they are expressly agreed upon in the concluded contract.

All product designations may be trademarks or product names of Siemens AG or other companies whose use by third parties for their own purposes could violate the rights of the owners.