

Datacenter Clarity LC integrates with Intel

Overview

Datacenter Clarity LC™* is a complete data center infrastructure management (DCIM) solution that offers a holistic, real-time view into data center maintenance and operations. It provides a comprehensive set of management tools that include:

- Fully integrated 3-D representation
- Real-time alarms and dashboards
- Change and connection management
- Real-time KPI monitoring

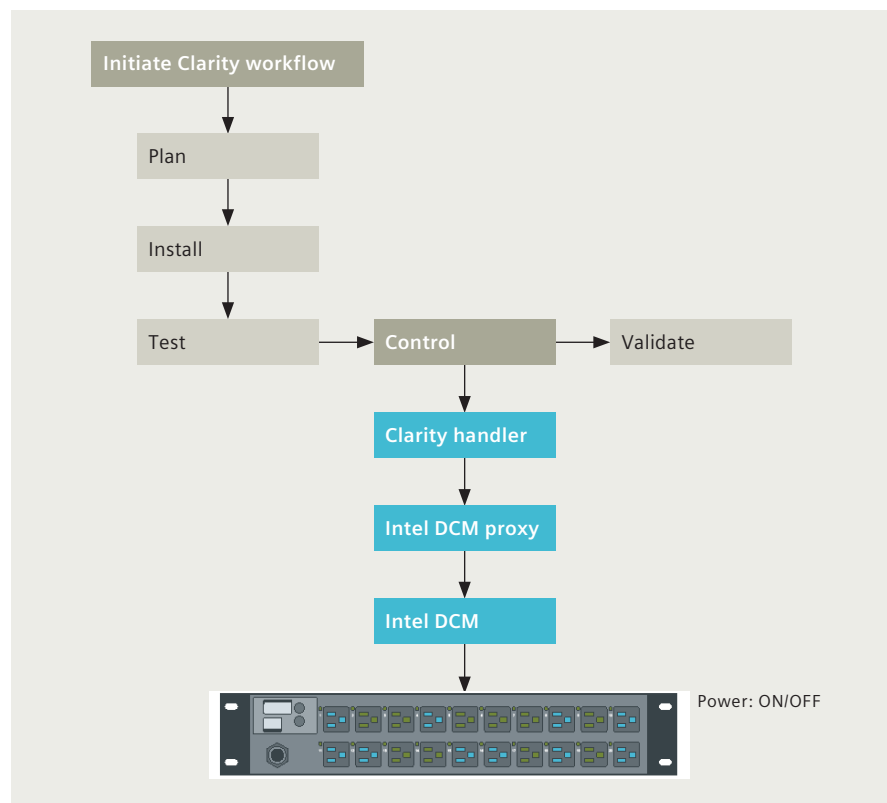
Datacenter Clarity LC now includes add-on modules that offer Intel® Data Center Manager (DCM) and Intel KVM (keyboard-video-mouse) functionalities. The capability of Intel DCM for environmental asset and power monitoring, in conjunction with the new Intel DCM data center health management tools, can be leveraged alongside Datacenter Clarity LC 4-D and other best-in-class reporting functionalities.

Datacenter Clarity LC and Intel DCM

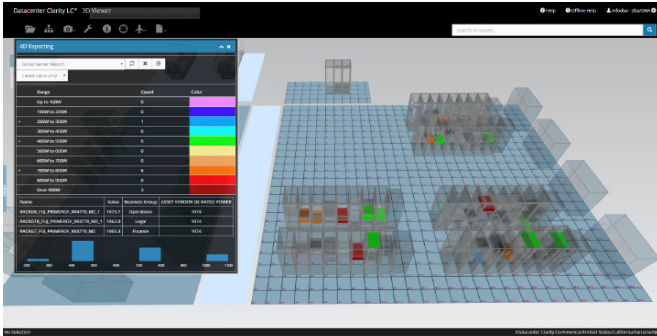
Integrating Datacenter Clarity LC and Intel DCM allows your enterprise to benefit from a centralized hub of precise, real-time data from both IT and data center assets.

The combination of Datacenter Clarity LC's state-of-the-art 3-D visualization, real-time notification, and reporting tools with Intel DCM's powerful monitoring capabilities brings new dimensions of insight into data center operations.

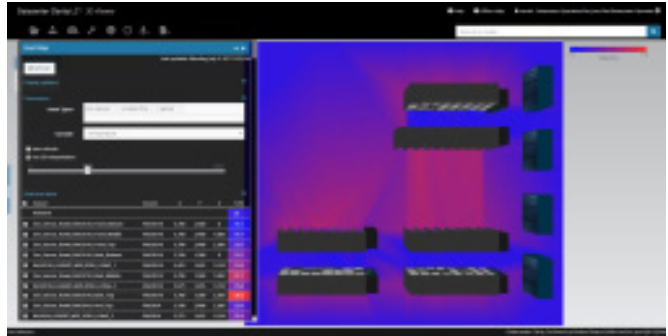
Pictured below: Sample Datacenter Clarity LC to Intel DCM workflow.



* Datacenter Clarity LC™ is a trademark owned and licensed by Maya Heat Transfer Technologies Ltd.



Pictured above: Datacenter Clarity LC ghost server 4-D report.



Pictured above: Datacenter Clarity LC heat map showing temperature distribution.

Integrated features

Power management

Bringing the real-time utilization data generated by Intel DCM—including CPU, disk and memory power usage—into the Datacenter Clarity LC interface allows for extensive and powerful cross-referencing between real-time power metrics and their effect on data center operations. This enables your organization to manage and optimize power usage.

- Automatically generated reports show real-time power data alongside other pre-selectable metrics.

Real-time monitoring

Intel DCM capabilities complement the extensive, diverse and versatile Datacenter Clarity LC monitoring tools to offer such benefits as:

- Device-level dashboards which report on any metric that you choose, from power consumption to temperature, while pivot-table and grouping functionalities enable well-informed and efficient decision making.
- The alarm viewer module in Datacenter Clarity LC which allows you to view and diagnose real-time events from the data center's Intel DCM-enabled assets.

Highlights

- Leverage Datacenter Clarity LC's intuitive 4-D reporting tools to gain insight into the operation of individual assets as well as the overall performance of the data center.
- Optimize data center energy efficiency by visualizing and managing additional key performance information.
- Increase your accuracy of reporting important environmental metrics by pulling data directly from the servers themselves.
- Identify underperforming equipment and ghost servers in an instant using Datacenter Clarity LC's visuals and reports.

Siemens Industry, Inc.
 Building Technologies division
 1000 Deerfield Parkway
 Buffalo Grove, IL 60089
 Tel.: (847) 215-1000
 Fax: (847) 215-1093

The information in this document contains general descriptions of technical options available, which do not always have to be present in individual cases. The required features should therefore be specified in each individual case at the time of closing the contract.