



SIEMENS
Ingenuity for life

SIEMENS

Global Industry
Partner of
WorldSkills
International



SCE Guide Trainer Packages

Siemens Automation Cooperates with Education (SCE) |
05/2018

Unrestricted © Siemens AG 2018

siemens.com/sce

¿Porqué ofrecemos paquetes de entrenamiento SCE?

El ensamblaje de productos individuales requiere mucho conocimiento y requiere mucho tiempo. Por lo tanto, hemos mapeado las configuraciones relevantes del uso educativo práctico en paquetes de SCE para usted.

¿Para quién son estos paquetes de entrenamiento?

- Para Institutos de investigación, instrucción y desarrollo.
- Para OEM que fabrican celdas didacticas y que integran los paquetes SCE
- Para capacitación industrial inicial de la empresa
consultar paquetes de entrenamiento [Paquetes Especiales con Excepción](#)

¿Qué se debe tener en cuenta cuando usamos los paquetes escolares?

- La lista de productos puede estar sujeta a las regulaciones de exportación por Europa/Alemania y/o Estados Unidos.
- Las notas de pedido de los paquetes de entrenamiento deben tomarse en cuenta.

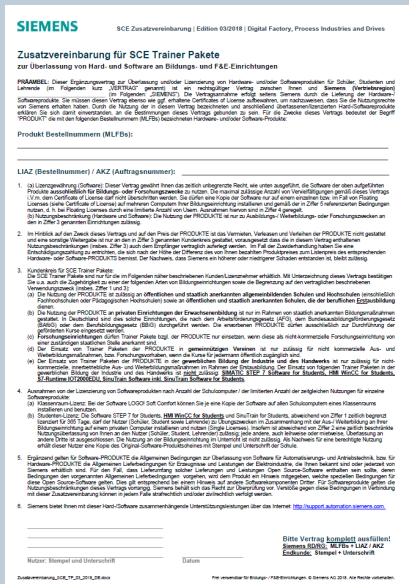


SCE Trainer Packages		Siemens Automation Cooperates with Education (SCE) 05/2018			
Product	HW-Sets	Licenses	SW Vers.	MLFB	Note
Open Source Platform					
SIMATIC IOT2020 with 512 MB RAM, 1 x Ethernet, 1 x USB <small>* Can only be ordered from RS Components rs-components.com</small>	1			124-4037 ¹	NEW
SIMATIC IOT2040 with 1 GB RAM, 2 x Ethernet, 2 x RS232/485, 1 x USB, RTC	1			6ES7647-0AA00-1YA2	NEW
SIMATIC IOT2000EDU, S7 Software Controller executable on IOT2020 and IOT2040	100	V1.1		6ES7671-0LE00-0Y90	NEW O*
SIMATIC IO-Shield: SIMATIC IOT2000 Input/Output Module with 5 DI, 2 DO, 2 AI, ARDUINO Shield for IOT2020/2040	1			6ES7647-0KA01-0AA2	NEU
3rd Party IO-Shield: ICHDS-Powershield for IOT2020/2040 with 6 DI, 5 DO (RA), 1 DO (PWM), 2 AI, 1 AO <small>* Can only be ordered from KAFTAN media UG kaftan-media.com/iot2000</small>	1			100301 ²	NEU
Industrial Control					
SIRIUS Low Voltage Devices with IO-Link	1			3TK3368-0TP00	
Engineering Software					
SIMATIC STEP 7 Professional Software for Training	1	V15		6ES7822-1AA05-4YA5	O
SIMATIC STEP 7 Professional Software for Training	6+20	V15		6ES7822-1BA05-4YA5	O
Upgrade SIMATIC STEP 7 Prof. Software for Training from 2006/2010/V11/V12/V13 ->	6+20	V15		6ES7822-1AA05-4YE5	O
SIMATIC STEP 7 Professional Software for Students	20	V15		6ES7822-1AC05-4YA5	O*
Upgrade SIMATIC STEP 7 Basic for S7-1200	6	V15		6ES7822-0AA05-4YE5	O
SIMATIC closed loop control with SIMATIC Modular				6ES7860-1AA00-4YX0	
SIMATIC closed loop control with SIMATIC Standard				6ES7860-2AA00-4YX0	
SIMATIC CFC Software	12	V9.0		6ES7658-1EX58-0Y55	
SIMATIC CFC Software for Students	20	V9.0		6ES7658-1EX58-0Y56	

[↗ SCE Trainer Package list](#)



Purchasing remarks on SCE Trainer Packages



Notas de pedido

Se requiere un uso de declaración especial para obtener los paquetes de entrenamiento
 Este acuerdo complementario adicional para los paquetes de entrenamiento SIMATIC para la implementación de instalaciones de investigación, desarrollo y educación en un período de formación debe ser firmado por la institución educativa solicitante y enviado a Siemens AG, para el lanzamiento de la entrega.

PDF: Additional_Agreement_SCE_TP_ES

Paquetes Especiales con Excepción

Los siguientes paquetes de entrenamiento pueden ser solo ordenados por escuelas, colegios y Universidades:

- SIMATIC S7 software **para estudiantes:**
- WinCC Advanced **para estudiantes:**
- SIMATIC IOT2000EDU
- SinuTrain Operate:
- SinuTrain Operate **para estudiantes:**

- 6ES7822-1AC05-4YA5
- 6AV2102-0AA05-0AS7
- 6ES7671-0LE00-0YB0
- 6FC5870-1T... /MCS405...
- 6FC5870-1S... /MCS405...

- ▶ IOT2000
- ▶ Industrial Controls
- ▶ Engineering SW
- ▶ SIMIT Simulation
- ▶ Basic Automation
- ▶ SIMATIC Controller
- ▶ Distributed IOs
- ▶ Operator control & monitoring
- ▶ Process Automation
- ▶ Industrial Communication
- ▶ Industrial Identification
- ▶ Drive Technology
- ▶ SINUTRAIN SW
- ▶ PLM Software
- ▶ WorldSkills
- ▶ Ordering Inform.

Overview of Trainer Packages

SIMATIC software de ingenieria

- Overview structure STEP 7 and HMI *
- Single-user license V15 *
- 6er license V15 *
- 6er upgrade license V15 *
- Software for students V15 *
- Closed loop control with SIMATIC Modular
- Closed loop control with SIMATIC Modular
- CFC 12er license *
- CFC 20er student license *
- NET IE Softnet 12er license *

Simulación

- SIMIT Simulation Platform V9.1 *
- SIMIT demo version V9.1 *

Automatizacion básica

- LOGO! 12/24V, LOGO! 230 V (ETHERNET) *
- S7-1200 Basic Controller 1215C *
- Basic Panels KTP400 for LOGO! *
- Basic Panels KTP700 for S7-1200
- Upgrade STEP 7 V15 Basic for S7-1200 package *

SinuTrain software

*

PLM software

*

Control & monitoreo del operador

- Overview structure STEP 7 and HMI
- WinCC Advanced V15/WinCC flexible 2008/Upgrades *
- WinCC Software Advanced/WinCC flexible for Students *
- TP700/TP1500 Comfort Colour Panel *
- WinCC Professional with options *
- V15/6er license/upgrade
- SCADA System SIMATIC WinCC with options/ASIA *
- V7/6er license/upgrade

Automatizacion de procesos

- Process control system PCS 7 3er license/upgrade *
- Process control system PCS 7 6er license *
- Process control system PCS 7 AS RTX Box + ET200M

Tecnologia de movimiento

- SINAMICS G120 standard drive
- SINAMICS S120 servo drive
- SIMOTION D410 add-on for S120

Identificación industrial

- SIMATIC MV440 code reader
- SIMATIC RF200/RF300 RFID system

Control industrial

- SIRIUS Low Voltage Devices

Controladores avanzados

- ET 200SP 1515SP PC F Open Controller *
- ET 200SP 1512SP F-1 PN Distributed Controller *
- S7-1516F PN/DP, S7-1516 PN/DP *
- S7-1512C PN *
- Upgrade S7-314C-2PN/DP
- S7-315F-2PN/DP, S7-315T
- S7-300F-Technology

Periferia descentralizada

- ET 200SP digital PROFINET
- ET 200SP with input module Energy Meter
- ET 200SP with communication module IO-Link
- ET 200SP with communication module AS-i Master
- ET 200SP Expansion Analog Safety

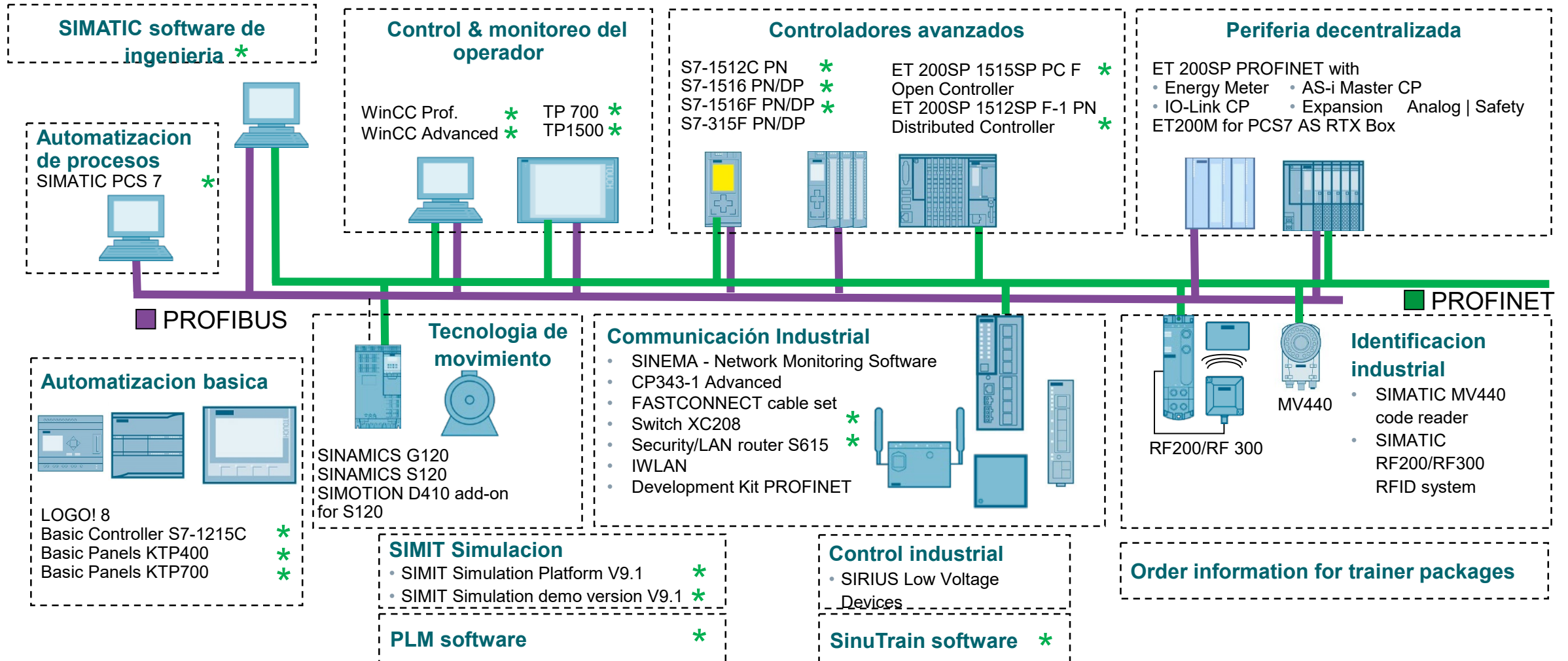
Comunicación Industrial

- SINEMA Network Monitoring Software
- CP343-1 Advanced
- FASTCONNECT cable set
- IE SCALANCE switch XC208 *
- IE SCALANCE SECURITY/LAN router S615 *
- IWLAN
- Development Kit PROFINET

Order information for trainer packages

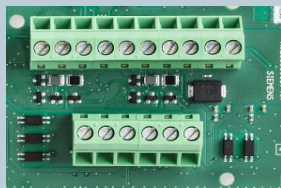
* New/updated package

System architecture of the Trainer Packages



SIMATIC IOT2000

Plataforma de código abierto



Product	HW sets	Licenses	SW vers.	MLFB	Note
SIMATIC IOT2020 with Intel Quark x1000, 512 MB RAM, 1x 10/100 Mbps Ethernet RJ45; 1x USB2.0, 1x USB client; SD CARD slot; 24 V DC PS	1			124-4037 ¹	NEW
¹ Can only be ordered from RS Components rs-components.com					
SIMATIC IOT2040 with Intel Quark x1020 (+Secure Boot), 1 GB RAM, 2x 10/100 Mbps Ethernet RJ45; 1x USB2.0, 1x USB client; SD CARD slot; 24 V DC PS, 2 x RS232/485 interfaces, battery-buffered real time clock	1			6ES7647-0AA00-1YA2	NEW
SIMATIC IOT2000EDU S7-Software Controller, can be run on IOT2020 and IOT2040, only for schools, colleges and universities, 100 licenses, R-SW, HSP and docu, license sticker		100	V1.1	6ES7671-0LE00-0YB0	NEW ○★
SIMATIC IO-Shield SIMATIC IOT2000 Input/Output Modul with 5 DE, 2 DA, 2 AE ARDUINO Shield for IOT2020/2040	1			6ES7647-0KA01-0AA2	NEW
3rd Party IO-Shield IKHDS-Powershield for IOT2020/2040 with 6 DE, 5 DA (RA), 1 DA (PWM), 2 AE, 1 AA	1			100301 ²	NEW

○ Related Information: <https://support.industry.siemens.com/cs/de/en/view/65601780>

★ Only for schools, colleges and universities

Informationen zu SIMATIC IOT2000: see [siemens.com/iot2000](https://www.siemens.com/iot2000) and [siemens.com/scs/iot2000](https://www.siemens.com/scs/iot2000)

SIRIUS Industrial Controls

Overview

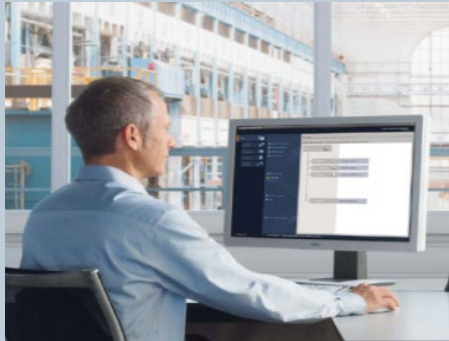
SIEMENS
Ingenuity for life



Product	HW sets	Licenses	SW vers.	MLFB	Note
SIRIUS Low Voltage Devices with IO-Link	1			3TK3388-0TP00	

Engineering software

Overview



SW functionally identical to the industrial version



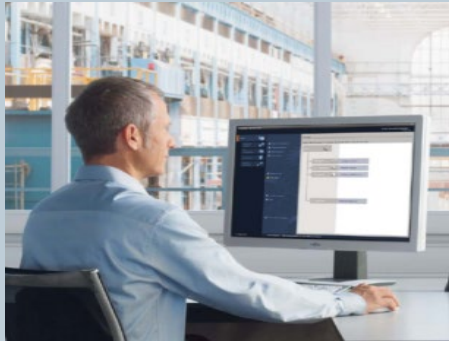
Product	HW sets	Licenses	SW vers.	MLFB	Note
SIMATIC STEP 7 Professional Software for Training		1	V15	6ES7822-1AA05-4YA5	○
SIMATIC STEP 7 Professional Software for Training		6+20	V15	6ES7822-1BA05-4YA5	○
Upgrade SIMATIC STEP 7 Professional Software for Training from 2006/2010/V11/V12/V13/V14 ->		6+20	V15	6ES7822-1AA05-4YE5	○
SIMATIC STEP 7 Professional Software for Students		20	V15	6ES7822-1AC05-4YA5	○★
Upgrade SIMATIC STEP 7 BASIC for S7-1200 – siehe		6	V15	6ES7822-0AA05-4YE5	○
SIMATIC closed loop control with SIMATIC Modular				6ES7860-1AA00-4YX0	
SIMATIC closed loop control with SIMATIC Standard				6ES7860-2AA00-4YX0	
SIMATIC CFC Software		12	V9.0	6ES7658-1EX58-0YS5	
SIMATIC CFC Software for Students		20	V9.0	6ES7658-1EX58-0YS6	
SIMATIC NET IE SOFTNET		12	V15	6GK1950-0BB01	○

○ Related information: <https://support.industry.siemens.com/cs/de/en/view/65601780>

★ Only for schools, colleges and universities

Engineering software

Overview



SW functionally identical to the industrial version



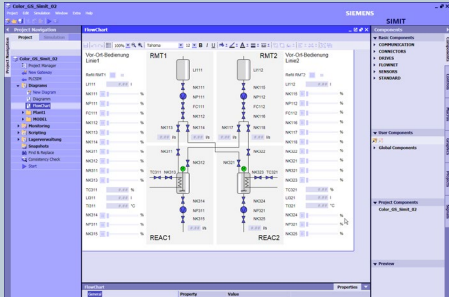
Product	HW sets	Licenses	SW vers.	MLFB	Note
SIMATIC STEP 7 Professional Software for Training		1	V15	6ES7822-1AA05-4YA5	○
SIMATIC STEP 7 Professional Software for Training		6+20	V15	6ES7822-1BA05-4YA5	○
Upgrade SIMATIC STEP 7 Professional Software for Training from 2006/2010/V11/V12/V13/V14 ->		6+20	V15	6ES7822-1AA05-4YE5	○
SIMATIC STEP 7 Professional Software for Students		20	V15	6ES7822-1AC05-4YA5	○★
Upgrade SIMATIC STEP 7 BASIC for S7-1200 – siehe		6	V15	6ES7822-0AA05-4YE5	○
SIMATIC closed loop control with SIMATIC Modular				6ES7860-1AA00-4YX0	
SIMATIC closed loop control with SIMATIC Standard				6ES7860-2AA00-4YX0	
SIMATIC CFC Software		12	V9.0	6ES7658-1EX58-0YS5	
SIMATIC CFC Software for Students		20	V9.0	6ES7658-1EX58-0YS6	
SIMATIC NET IE SOFTNET		12	V15	6GK1950-0BB01	○

○ Related information: <https://support.industry.siemens.com/cs/de/en/view/65601780>

★ Only for schools, colleges and universities

Virtual commissioning with SIMIT Simulation Platform

Overview



Product	HW sets	Licenses	SW vers.	MLFB	Note
SIMIT Simulation Platform with dongle		1	V9.1	6DL5260-0XX68-0YS5	○
Upgrade SIMIT Simulation Platform from V8.0/8.1/9.0 ->		1	V9.1	6DL5260-0XX68-0YS6	○
Demo version SIMIT Simulation Platform SIMIT WBT		1	V9.1	Download	○

○ Related information: <https://support.industry.siemens.com/cs/de/en/view/65601780>

Basic Automation Overview



Product	HW sets	Licenses	SW vers.	MLFB	Note
LOGO! 8 12/24V ETHERNET-0BA8 with digital modules DM8 12/24R	6	6		6ED1057-3SA20-0YA1	
LOGO! 8 230 V ETHERNET-0BA8 with digital modules DM8 230R	6	6		6ED1057-3SA20-0YB1	
LOGO! 8 12/24V ETHERNET-0BA8 without digital modules DM8 ...R	9	9		6ED1057-3SA30-0YA1	NEW
Basic Controller SIMATIC S7-1200, CPU 1215C; DC/DC/DC	6	6	V15	6ES7215-1AG40-4AB1	NEW ○
Basic Controller SIMATIC S7-1200, CPU 1215C; AC/DC/RELAY	6	6	V15	6ES7215-1BG40-4AB1	NEW ○
Basic Controller SIMATIC S7-1200, CPU 1215C; DC/DC/RELAY	6	6	V15	6ES7215-1HG40-4AB1	NEW ○
Upgrade SIMATIC STEP 7 BASIC for S7-1200		6	V15	6ES7822-0AA05-4YE5	○
SIMATIC KTP400 BASIC Color Panel for LOGO! 7/8	1	1	V15	6AV2123-2DB03-0AA1	○
SIMATIC KTP400 BASIC Color Panel for LOGO! 7/8	6	6	V15	6AV2123-2DB03-0AA0	○
SIMATIC KTP700 BASIC Color Panel for S7-1200	1			6AV2123-2GB03-0AA1	○
SIMATIC KTP700 BASIC Color Panel for S7-1200	6			6AV2123-2GB03-0AA0	○

○ Related information: <https://support.industry.siemens.com/cs/de/en/view/65601780>

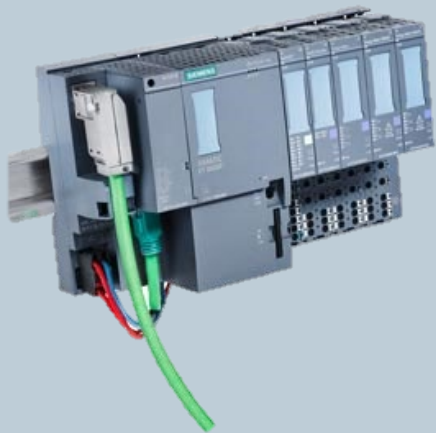
Controller Overview



Product	HW sets	Licenses	SW vers.	MLFB	Note
SIMATIC ET 200SP Open Controller CPU 1515SP PC F with WinCC RT Advanced 512 PTs	1	1	V15	6ES7677-2FA41-4AB1	○
SIMATIC ET 200SP Distributed Controller CPU 1512SP F-1 PN Safety	1	1	V15	6ES7512-1SK00-4AB2	○
SIMATIC CPU 1516F PN/DP Safety with software	1	1	V15	6ES7516-3FN00-4AB2	○
SIMATIC CPU 1516 PN/DP with software	1	1	V15	6ES7516-3AN00-4AB3	○
SIMATIC CPU 1512C-1 PN with software	1	1	V15	6ES7512-1CK00-4AB6	○
SIMATIC CPU 1512C-1 PN with software and PM 1507	1	1	V15	6ES7512-1CK00-4AB1	○
SIMATIC CPU 1512C-1 PN with software and CP 1542-5 (CP PROFIBUS)	1	1	V15	6ES7512-1CK00-4AB7	○
SIMATIC CPU 1512C-1 PN with software, PM 1507 and CP 1542-5 (CP PROFIBUS)	1	1	V15	6ES7512-1CK00-4AB2	○
Upgrade SIMATIC CPU 314C-2 PN/DP	1			6ES7314-6EH04-4AB4	○
SIMATIC CPU 315F-2 PN/DP	1			6ES7315-2FH14-4AB1	○
SIMATIC S7-300 F-Technology	1			6ES7326-2FS00-4AB1	○

○ Related information: <https://support.industry.siemens.com/cs/de/en/view/65601780>

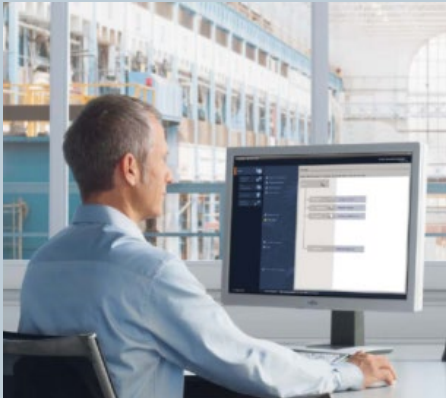
Distributed IOs Overview



Product	HW sets	Licenses	SW vers.	MLFB	Note
SIMATIC ET 200SP digital PROFINET	1			6ES7155-6AU00-0AB0	
SIMATIC ET 200SP digital with input module ENERGY METER PN	1			6ES7155-6AU00-0AB1	
SIMATIC ET 200SP digital with communication module IO-LINK MASTER V1.1 PN	1			6ES7155-6AU00-0AB2	
SIMATIC ET 200SP digital with communication module CM AS-i MASTER ST PN	1			6ES7155-6AU00-0AB3	
SIMATIC ET 200SP analog expansion module	1			6ES7155-6AU00-0AB6	
SIMATIC ET 200SP safety expansion module	1			6ES7136-6BA00-0AB1	

Operator control & monitoring

Overview



SW functionally identical to the industrial version

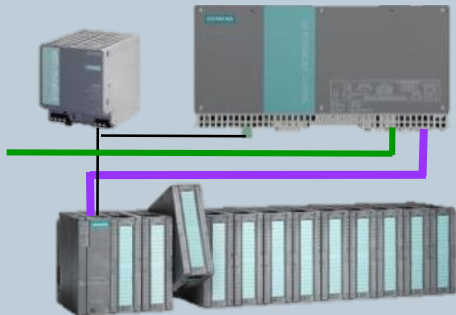
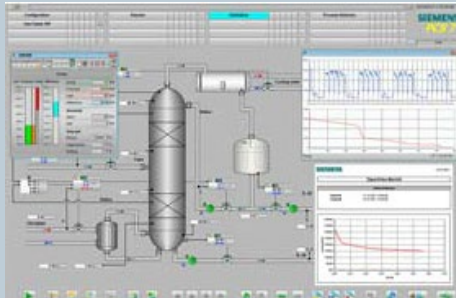


Product	HW sets	Licen ses	SW vers.	MLFB	Note
SIMATIC WinCC Advanced/WinCC flexible 2008 SP5	6+20		V15	6AV2102-0AA05-0AS5	○
Upgrade SIMATIC WinCC flexible from 2008/V11/V12/V13/V14 ->	6		V15	6AV2102-4AA05-0AS5	○
Upgrade SIMATIC WinCC flexible 2004, 2005, 2006, 2007 ->	6		2008 SP5	6AV6613-1XA01-3CS0	
SIMATIC WinCC Advanced/WinCC flexible 2008 SP5 for students	20		V15	6AV2102-0AA05-0AS7	○★
SIMATIC TP700 Comfort Colour Panel	1	1	V15	6AV2133-4AF00-0AA0	○
SIMATIC TP1500 Comfort Colour Panel	1	1	V15	6AV2133-4BF00-0AA0	○
SIMATIC WinCC Professional with options	6		V15	6AV2105-0HA05-0AS0	NEW ○
Upgrade SIMATIC WinCC Professional with options from V13/V14->	6		V15	6AV2105-4HA05-0AS0	NEW ○
SCADA System SIMATIC WinCC with options	6		V7.4 SP1	6AV6371-1DH07-4AX5	
SCADA System SIMATIC WinCC with options – ASIA	6		V7.4 SP1	6AV6371-1DH07-4AV5	
Upgrade SCADA System SIMATIC WinCC with options from V1.0 ->	6		V7.4 SP1	6AV6381-1BP07-4AX3	

○ Related information: <https://support.industry.siemens.com/cs/de/en/view/65601780>

★ Only for schools, colleges and universities

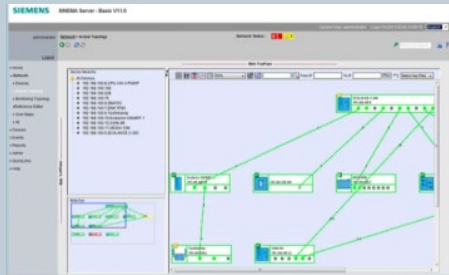
Process Automation Overview



Product	HW sets	Licenses	SW vers.	MLFB	Note
SIMATIC PCS 7		3	V9.0	6ES7650-0XX58-0YS5	
Upgrade SIMATIC PCS 7 V8.X ->		3	V9.0	6ES7650-0XX58-0YE5	
SIMATIC PCS 7		6	V9.0	6ES7650-0XX58-2YS5	
SIMATIC PCS 7 AS RTX Box (PROFIBUS) only in combination with ET 200M for RTX	1			6ES7654-0UE23-0XS1	
ET 200M for RTX Box (PROFIBUS) only in combination with PCS 7 AS RTX Box	1			6ES7153-2BA10-4AB1	

[↗ PCS 7 Training Documents](#)

Industrial Communication Overview



Product	HW sets	Licenses	SW vers.	MLFB	Note
SINEMA Network Monitoring Software		6	V14 SP1	6GK1950-0BB06	○
SIMATIC CP 343-1 Advanced	1			6GK1950-0AA07	
FASTCONNECT cable set	1			6GK1950-0BB00	
IE SCALANCE switch XC208	1			6GK1950-0BB12	NEW ○
IE SCALANCE S615 with SINEMA RC basic software	1	1		6GK1950-0BB13	NEW ○
IE SCALANCE S615 LAN router	2			6GK1950-0BB23	NEW ○
IWLAN for all countries except USA	1			6GK1950-0BB14	○
IWLAN for USA	1			6GK1950-0BB15	○
Development Kit PROFINET	1			6ES7195-3BE00-4AB1	

○ Related information: <https://support.industry.siemens.com/cs/de/en/view/65601780>

Industrial Identification

Overview



Product	HW sets	Licenses	SW vers.	MLFB	Note
SIMATIC MV440 HR optical reader PROFINET	1			6GF3400-0TP03	○
SIMATIC RF200 RFID system PROFINET	1			6GT2096-3AA00-0AA0	○
SIMATIC RF200 RFID system IO-Link	1			6GT2096-5AA00-0AA0	○
SIMATIC RF300 RFID system PROFINET	1			6GT2096-1AA00-0AA0	○

○ Related information: <https://support.industry.siemens.com/cs/de/en/view/65601780>

Drive Technology Overview



Product	HW sets	Licenses	SW vers.	MLFB	Note
SINAMICS G120 standard drive for 1 AC 230 V network without PROFINET filter	1			6SL3200-3AX00-0UL1	○
SINAMICS G120 standard drive for 3 AC 400 V network without PROFINET filter	1			6SL3200-3AX00-0UL2	○
SINAMICS S120 servo drive for 1 AC 230 V network without PROFINET filter	1			6SL3080-8AB01-0AA0	○
SINAMICS S120 servo drive for 3 AC 400 V network without PROFINET filter	1			6SL3080-8AE01-0AA0	○
SIMOTION D410 add-on for SINAMICS S120	1	1		6SL3080-8LA00-0AA0	○

○ Related information: <https://support.industry.siemens.com/cs/de/en/view/65601780>

SINUTRAIN software for Germany

Overview



Product	HW sets	Licenses	SW vers.	MLFB	Note
SinuTrain SINUMERIK Operate V4.5/V4.7/V4.8 siemens.com/sinutrain-downloads		Basic Version		No time limit	NEW
SinuTrain Trainer Package for SINUMERIK Operate		6+40	V4.7	MCS4055	★
Maintenance for SinuTrain Trainer Package for SINUMERIK Operate			V4.7		NEW ★
SinuTrain student licenses for SINUMERIK Operate - 300 hours		20	V4.7	MCS4057	★
Maintenance for SinuTrain Student licenses for SINUMERIK Operate - 300 hours			V4.7		NEW ★
SinuTrain Trainer Package for SINUMERIK Operate		6+40	V4.5	MCS40551	★
Maintenance for SinuTrain Trainer Package for SINUMERIK Operate			V4.5		NEW★
SinuTrain student licenses for SINUMERIK Operate - 300 hours		20	V4.5	MCS40571	★
Maintenance for SinuTrain Student licenses for SINUMERIK Operate - 300 hours			V4.5		NEW ★
SinuTrain Trainer Package for SINUMERIK Operate		16+32	V4.4	MCS40550	★
Maintenance for SinuTrain Trainer Package for SINUMERIK Operate			V4.4		NEW ★
SinuTrain student licenses for SINUMERIK Operate - 300 hours		32	V4.4	MCS40570	★
Maintenance for SinuTrain Student licenses for SINUMERIK Operate - 300 hours			V4.4		NEW ★

SINUTRAIN software for Germany: SinuTrain is only sold with maintenance in Germany, requests for quotation to:
mcmts.software.plm@siemens.com

★ Only for schools, colleges and universities

SINUTRAIN software for all countries outside of Germany

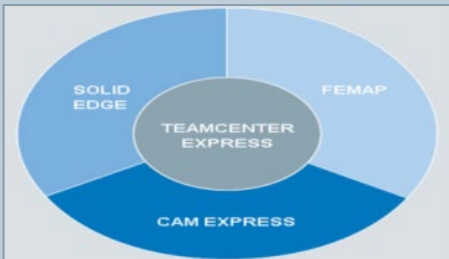
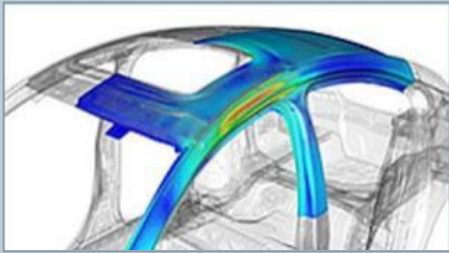
Overview



Product	HW sets	Licenses	SW vers.	MLFB	Note
SinuTrain SINUMERIK Operate V4.5/V4.7/V4.8 siemens.com/sinutrain-downloads		Basic Version		No time limit	NEW
SinuTrain Trainer Package for SINUMERIK Operate		6+40	V4.7	6FC5870-1TC43-0YA0	★
SinuTrain student licenses for SINUMERIK Operate - 300 hours		20	V4.7	6FC5870-1SC43-2YA0	★
SinuTrain Trainer Package for SINUMERIK Operate		6+40	V4.5	6FC5870-1TC41-0YA0	★
SinuTrain student licenses for SINUMERIK Operate - 300 hours		20	V4.5	6FC5870-1SC41-0YA0	★
SinuTrain Trainer Package for SINUMERIK Operate		16+32	V4.4	6FC5870-1TC40-1YA0	★
SinuTrain student licenses for SINUMERIK Operate - 300 hours		32	V4.4	6FC5870-1SC40-1YA0	★

★ Only for schools, colleges and universities

Siemens Product Lifecycle Management (PLM) software



PLM software

➤ [NX](#), offers modern tools and technologies for product development. The latest version contains functions for increasing productivity in design, simulation and manufacturing.

➤ [Tecnomatix](#), software for the "Digital factory", offers highly functional solutions for the entire scope of the life cycle of your products with which companies can quickly find the best strategies for increasing productivity and reducing costs in manufacturing.

➤ [Teamcenter](#), supports bringing increasingly complex products to the market throughout the entire product life cycle, with simultaneous increases in productivity and optimized worldwide cooperation.

Velocity Series, a family of modular, pre-integrated software solutions for product life cycle management in small and medium-sized manufacturing companies. The 2D/3D CAD software Solid Edge is a component of this software.

➤ [Solid Edge Highschool](#) ➤ [Solid Edge Students](#) ➤ [Solid Edge Academic](#)

- ▶ IOT2000
- ▶ Industrial Controls
- ▶ Engineering SW
- ▶ SIMIT Simulation
- ▶ Basic Automation
- ▶ SIMATIC Controller
- ▶ Distributed IOs
- ▶ Operator control & monitoring
- ▶ Process Automation
- ▶ Industrial Communication
- ▶ Industrial Identification
- ▶ Drive Technology
- ▶ SINUTRAIN SW
- ▶ PLM Software
- ▶ WorldSkills
- ▶ Ordering Inform.