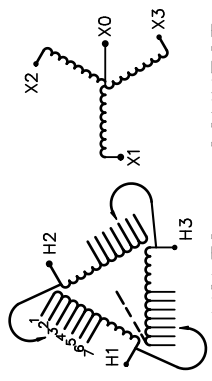



REVISION	DATE	BY	DATE	BY
		DRAWN	16/03/24	PP
		CHEK'D		
		VERIF'D		

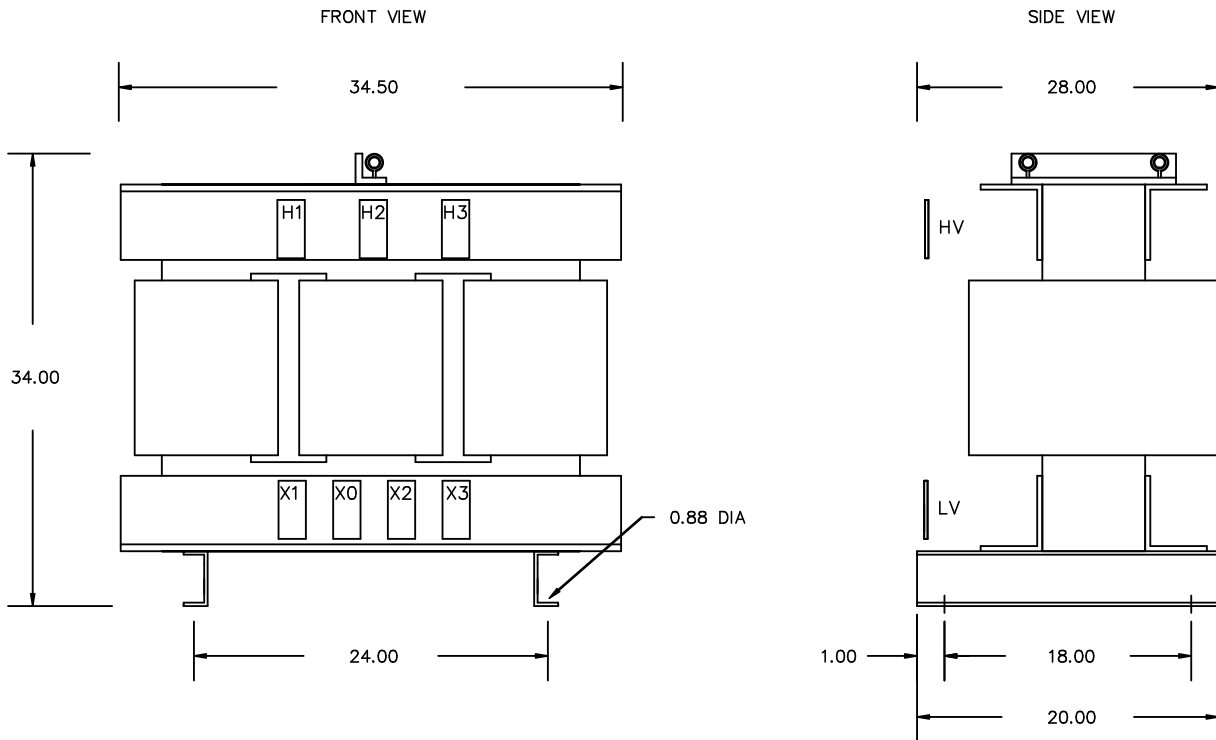
Confidential - Property of  
Siemens Industry, Inc.

CUSTOMER	
ORDER NO.	DWG. NO.
	3F3Y225FCD16CC SH 1 OF 2

# SIEMENS

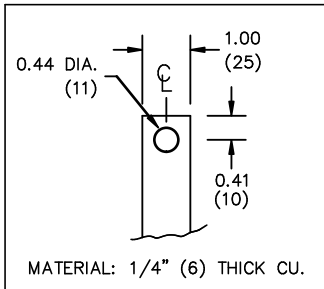
CATALOG NO. 3F3Y225FCD16CC SERIAL NO. SERIES H 225 kVA 60 Hz 3 PHASE 2.9 % IMP AT 135 °C		 <p>VOLTS CONNECT</p> <p>504 1 492 2 480 3 468 4 456 5 444 6 432 7</p>
115 °C RISE 30 °C AVG. AMBIENT 220 °C TEMP CLASS 40 °C MAX. AMBIENT PRIMARY ( H1 H2 H3 ) 480V V 10 kV BIL SECONDARY( X0 X1 X2 X3 ) 208Y/120V V 10 kV BIL WINDING MATERIAL CU ENCLOSURE TYPE - WEIGHT 1700 LBS ENERGY EFFICIENCY EXCEEDS CSA DOE 10 CFR PART 431:2016 C802.2-2012		
SUITABLE FOR INDOOR OR OUTDOOR LOCATIONS BEFORE HANDLING, INSTALLING AND OPERATING, SEE INSTRUCTION MANUAL NEMA Class AN Dry Type Transformer		TYPE J  LR 3902 SEISMIC QUALIFICATIONS, FLOOR MOUNT ONLY IBC 2012/ASCE 7-10 SDS<=2.0g Z/h=1 Ip=1.5 dsu0088e



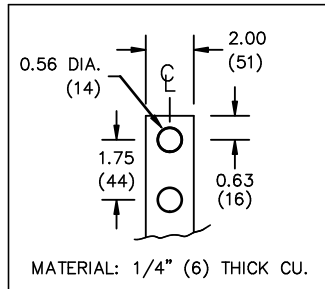


All Dimensions in inches

H.V.1. TERMINAL DETAIL



L.V.1. TERMINAL DETAIL



CUSTOMER NOTES:

- HV1 TERMINATED AT TOP FRONT
- LV1 TERMINATED AT BOTTOM FRONT
- DIMENSIONS ARE APPROXIMATE

Confidential – Property of  
Siemens Industry, Inc.

REVISION	DATE	BY	DATE	BY
		DRAWN	16/03/24	PP
		CHEK'D		
		VERIF'D		

CUSTOMER	
ORDER NO.	DWG. NO. 3F3Y225FCD16CC
SH 2 OF 2	