

Features and Ratings

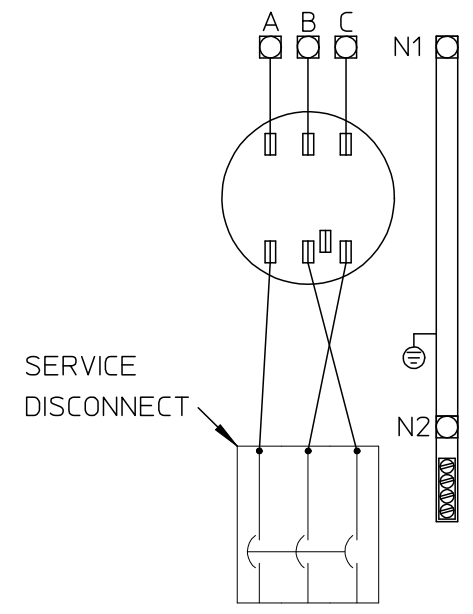
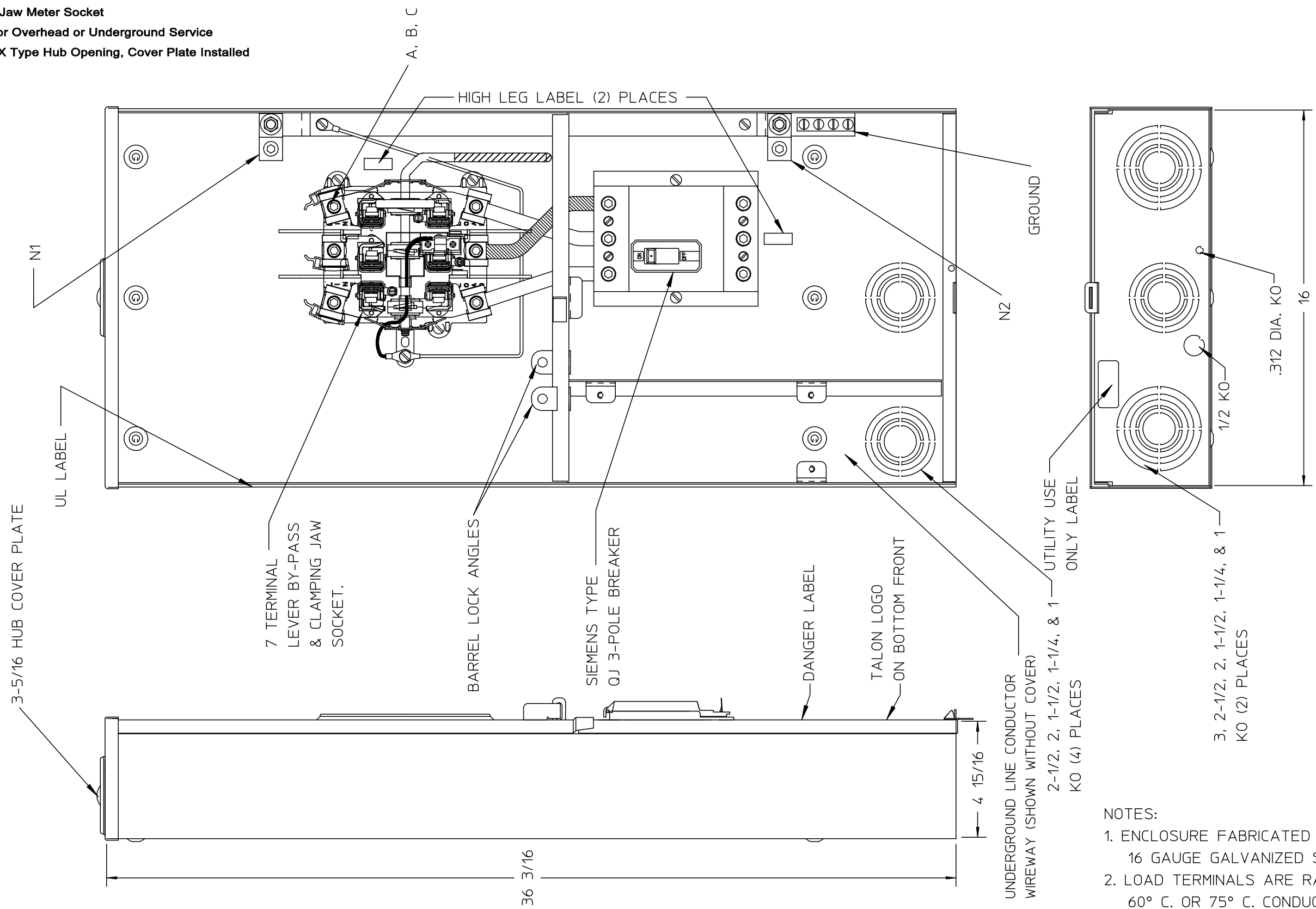
- Ringless Lever By-pass Type Meter Socket
- 200A Continuous, 200A Max., 120/240V AC
- Outdoor Enclosure (NEMA Type 3R)
- Painted G90 Steel
- 3 Phase, 4 Wire
- 7 Jaw Meter Socket
- For Overhead or Underground Service
- RX Type Hub Opening, Cover Plate Installed

Connectors, Wire Sizes and Torques

CONNECTOR	WIRE SIZE	TORQUE
A, B, C	#6-350kcmil	275 IN.-LBS.
N1	#6-350kcmil	375 IN.-LBS.
N2	#6-250kcmil	275 IN.-LBS.
GROUND	#14 - 1/0 AWG	50 IN.-LBS.
* External Hex Drive 1/2"		
* Internal Hex Drive 5/16"		

Accessories

- CONDUIT HUBS (RX Type)**
- | TRADE SIZE | CATALOG No. |
|------------|---------------------|
| 1-1/4 INCH | EC38597 or H38597-2 |
| 1-1/2 INCH | EC38598 or H38598-2 |
| 2 INCH | EC38599 or H38599-2 |
| 2-1/2 INCH | EC38600 or H38600-2 |
- Hub Cover Plate Kit**
Cat No: EC38595 or H38595-1
- Meter Opening Cover Plate**
Cat No: H659-0162
- 5th Jaw Kit**
Cat No: EC659-0121



- NOTES:
- ENCLOSURE FABRICATED FROM 16 GAUGE GALVANIZED STEEL
 - LOAD TERMINALS ARE RATED FOR 60° C. OR 75° C. CONDUCTOR

© 2015 Copyright Siemens Industry, Inc.



RAINFOOF COMBINATION METERING

Description: SKT/BKR 200A 3P NEU

KP 04/26/16 DO NOT SCALE DRAWING Dwg No: MM0303B3200RLC