

**Catalog Number: T482411CT344MR**

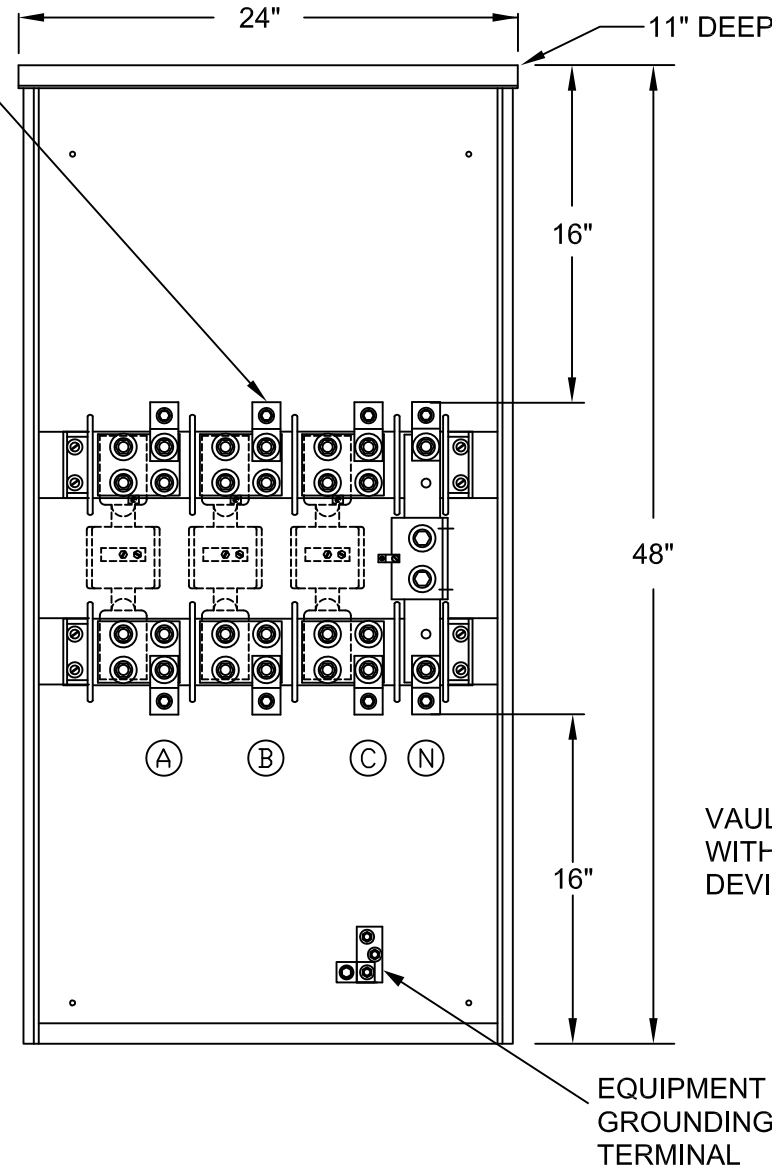
Amps	Volts Max.	Phase/Wires	Unprotected Fault Current Rating	Enclosure Size		
				Width	Height	Depth
400*	250V	3 Phase, 4 Wire	42,000	24"	48"	11"

\* 400A C/T CABINETS AT 250V MUST BE USED WHEN A 400A FUSED SWITCH IS USED FOR THE MAIN.

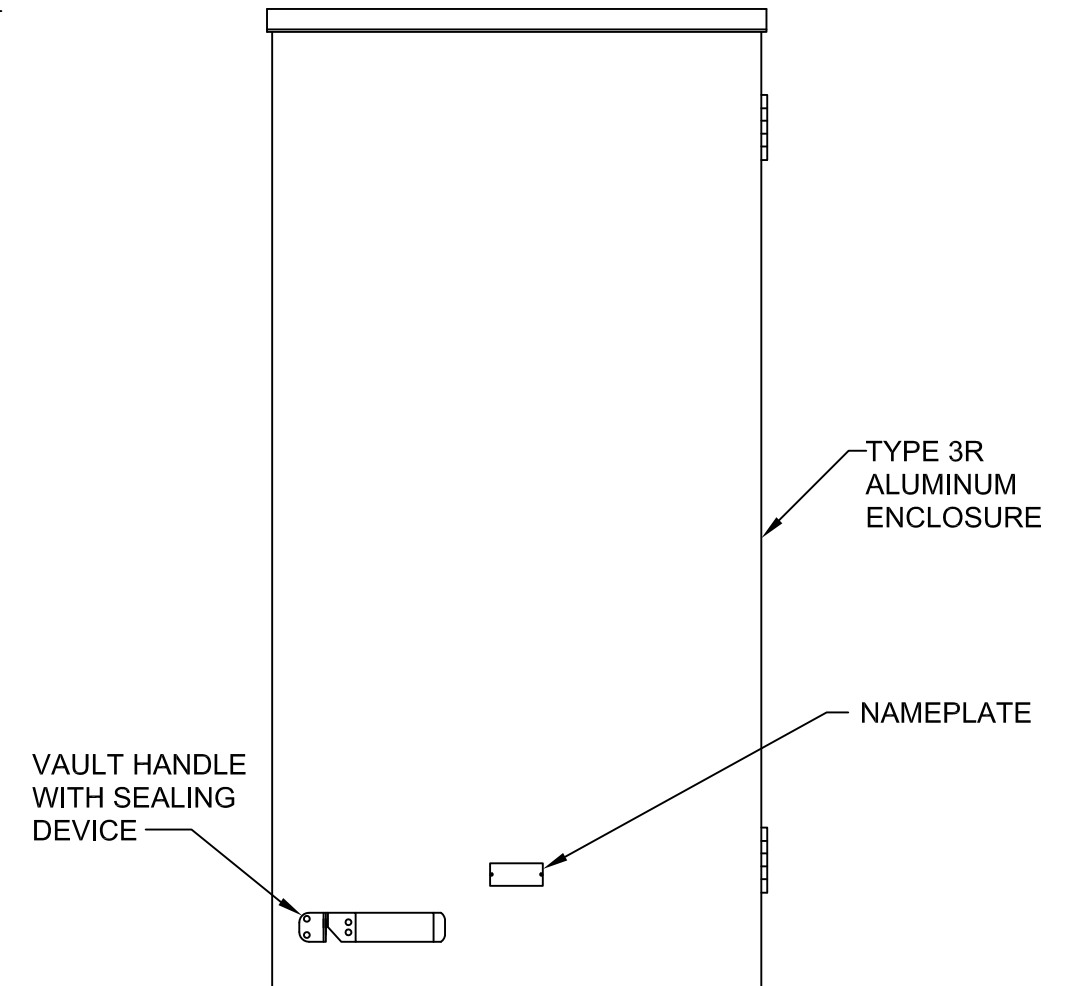


LINE AND LOAD LUG PROVIDED WILL ACCEPT 1-600MCM-4 OR 2-350 MCM-1/0 COPPER OR ALUMINUM CONDUCTORS. 1 LUG IS PROVIDED PER PHASE AND NEUTRAL, LINE & LOAD.

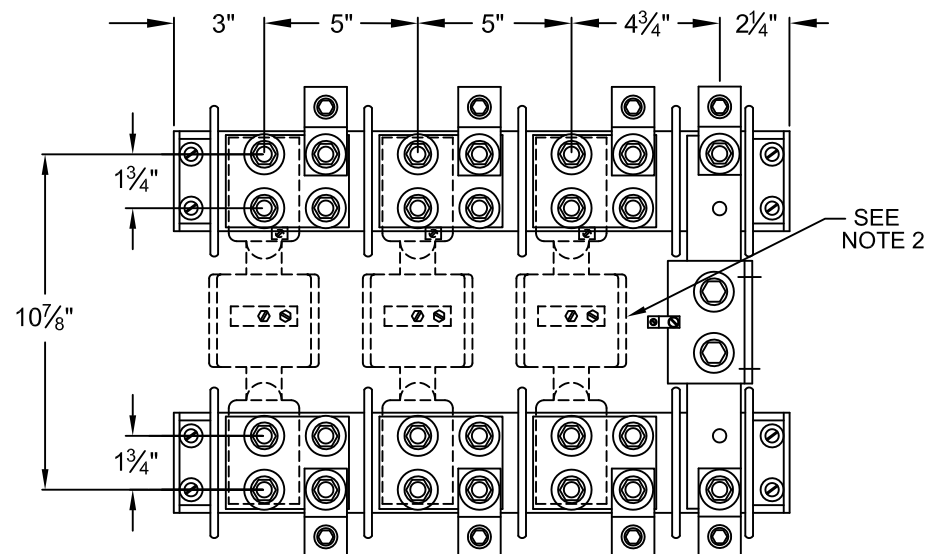
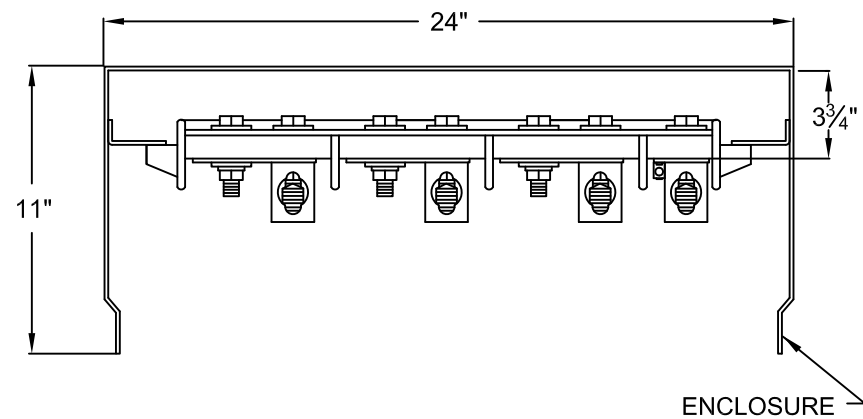
**FRONT INTERIOR VIEW**



**FRONT ENCLOSED VIEW**



**INTERIOR DETAIL**



**GENERAL NOTES:-**

- 1 C/T AND LUG LANDING PADS AND NEUTRAL ARE RATED 400 AMPS.
- 2 CURRENT TRANSFORMERS ARE PROVIDED BY THE UTILITY CO.
- 3 LINE AND LOAD LUG PROVIDED WILL ACCEPT 1-600MCM-#4 OR 2-350MCM-1/0 COPPER OR ALUMINUM CONDUCTORS. 1 LUG IS PROVIDED PER PHASE & NEUTRAL AS SHOWN, LINE & LOAD.

**TALON**

**Metering**

Description: **400A, 250V AC Max, 3Ph 4Wire, Outdoor Current Transformer Cabinet**