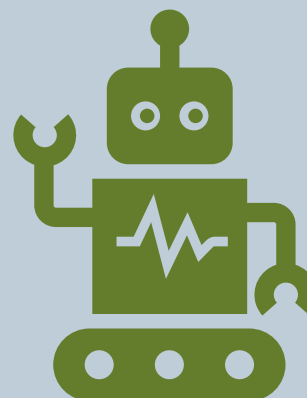


SIEMENS

Ingenuity for life



Technology Quiz

Answer Book

[siemens.co.uk/education](https://www.siemens.co.uk/education)

The first computer mouse, invented by Douglas Engelbart in 1964, consisted of a circuit board and two metal wheels with a wooden casing.



Engelbart named his invention the 'mouse' due to its similar appearance to the common mouse!

Question 1

What is the name for a computer pointing device?

Mouse

Question 2

What is the name of the famous rover sent to explore Mars in 2011?

Curiosity

Question 3

Which amount of memory is bigger: 1TB, 1GB, 1KB or 1MB?

1TB

Question 4

In a website address what does WWW stand for?

World Wide Web

Question 5

What was the first emoticon ever used?

: -)

The first emoticons, :-) and :- (, were written by Scott Fahlman in 1982.



Since then emoticons have changed the way in which we communicate. There are now over 3000 emoticons!

In computing, data such as numbers, text, images or sound are stored as binary numbers. This is a way of writing numbers using only 1s or 0s. One binary digit is called a bit. There are eight bits in one byte.



Can you calculate what 101 is in binary?

Question 6

How many dots are used in each letter in the Braille system?

6

Question 7

What year was the first apple iPhone released?

2007

Question 8

How many bits are in a byte?

8

Alan Turing, a British Computer Scientist, is widely considered to be the father of Artificial Intelligence (AI).



The Turing Test is a method to determine whether or not a computer is capable of thinking like a human being.

Question 9

What did Alan Turing's computer do in World War II?

Code breaking – his computer broke the enigma code.

Question 10

In software engineering what is a bug?

An error that causes a program to produce an incorrect or unexpected result.

Question 11

Is a keyboard hardware or software?

Hardware

Question 12

In 1875, Alexander Graham Bell invented a communication device. What was this invention?

Telephone

The first words spoken over the telephone were from Alexander Graham Bell to his assistant Thomas Watson.



"Mr. Watson—Come here—I want to see you"

Ada Lovelace is widely considered to be the first computer programmer.



Ada Lovelace was the first person to realise that computers could be used for more than pure calculations and wrote her algorithms by hand!

Question 13

Which umbrella term is used to refer to a variety of forms of intrusive computer software including viruses, spyware, worms, and trojan horses?

Malware

Question 14

How many computer languages are currently in use?

700

Question 15

How many digits exist in the binary system of numbers?

2

**Interested in the technology
powering our future?**

Learn about the future of
transport and take the
Self-Drive Challenge.
Scan the QR code and
Play now!



[siemens.co.uk/education](https://www.siemens.co.uk/education)