

Contacts:

Siemens Regular Courses

Siemens Pakistan Engineering Company Limited
Park Towers, 2nd Floor, Office Wing, Clifton,
Karachi TEL: +92 21 3587 6386 / 3587 6391
Islamabad TEL: +92 51 2812151-59 / 410 3465
E-mail: info.sap.pk@siemens-its.com
Visit us: <http://www.siemens.com.pk/SAP.html>



SIEMENS

Expand your horizons; Be a Global Resource

SAP Regular Courses



Contents

Functional Module

| | |
|--------------------------------------|-------|
| ▪ SAP Financials | 05-14 |
| ▪ Management Accounting (CO) | 15-24 |
| ▪ SAP Human Resources | 25-34 |
| ▪ SAP SCM (Procurement) | 35-44 |
| ▪ SCM (Order Fulfillment) | 45-54 |
| ▪ SAP SCM (Planning & Manufacturing) | 55-64 |
| ▪ Product Lifecycle Management | 65-73 |
| ▪ SAP Quality Management | 74-80 |

Technical Module

| | |
|--------------------------------|--------|
| ▪ SAP Programming ABAP | 81-86 |
| ▪ System Administration- Basis | 87-94 |
| ▪ Business Intelligence | 95-102 |

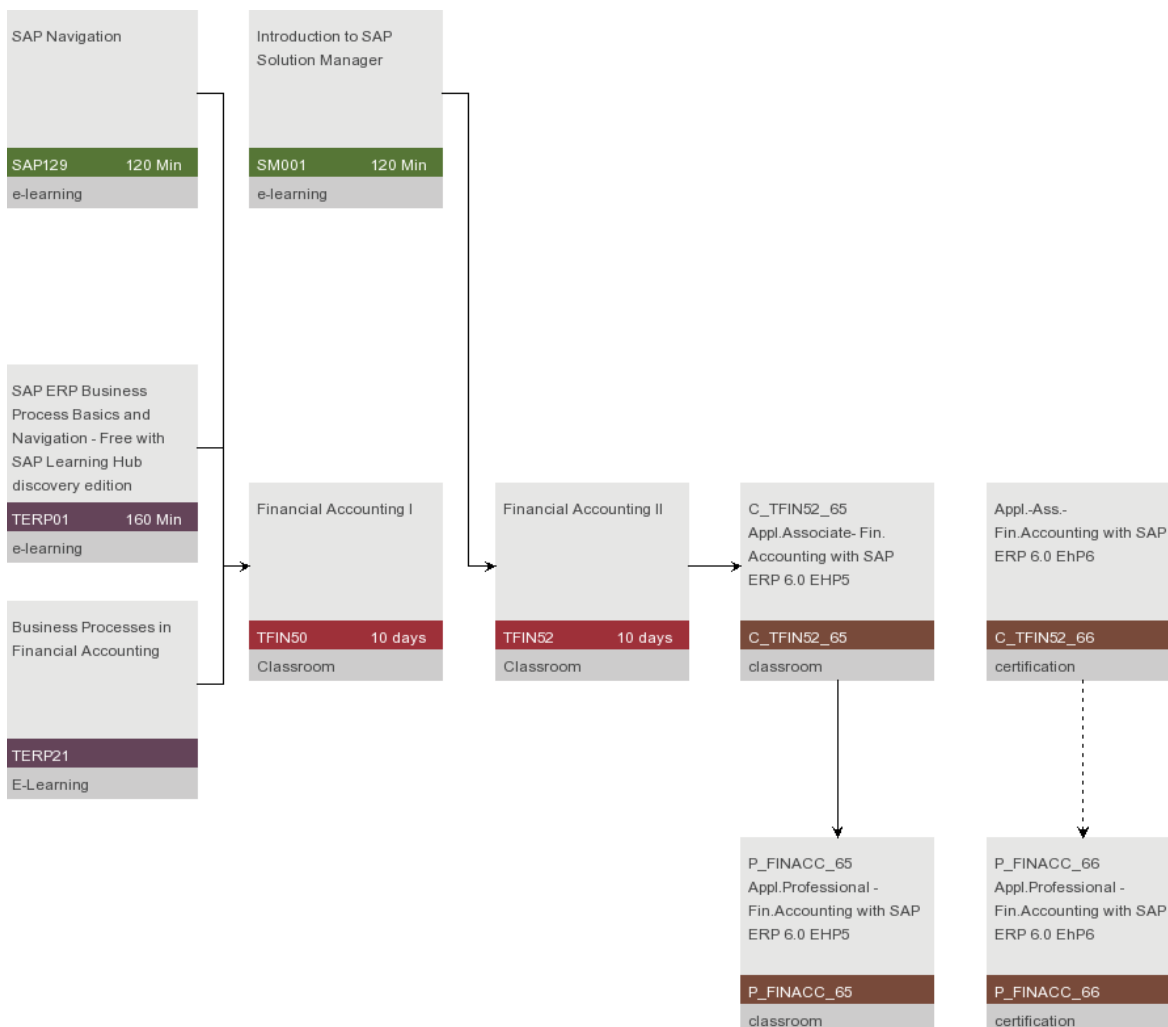


Functional Module



SAP Financials

Financial Accounting



Curriculum Map Legend

| | |
|--------------------|---|
| Overview | — Essential |
| Foundation | -- Recommended |
| Detailed | 🏠 Classroom Training |
| Delta Knowledge | 🖥️ Virtual Classroom Training |
| Consultant Academy | 💻 E-Learning |
| Under development | 📄 E-Learning (Online Knowledge Product) |
| Certification | |



SAP Financial Accounting

SAP Financials provides the tools to help companies comply with accounting standards such as U.S. Generally Accepted Accounting Principles (GAAP) and International Financial Reporting Standards (IFRS). In addition, it offers benefits such as the ability to generate a set of balanced and reconcilable financial statements by any dimension of the business -- including, business unit, profit center, or geographical location -- along with integrated, enterprise wide financial analytic capabilities.

Training courses in this curriculum enable you to become more efficient through the use of the general ledger, vendor, customer, bank, and asset processes. Plus, you'll discover how to leverage role-specific financial reports to meet ongoing financial and managerial reporting requirements.



SAP129 - SAP NAVIGATION



Duration: 2 hours

Delivery Type

- E-Learning

Audience

- Beginner users
- Project team members
- Project leaders
- Support personnel
- SAP consultants
- Technical consultants
- Sales
- Super users
- End users

Prerequisites:

Essential

- None

Recommended

- There are no required prerequisites for taking this course;
- however, it is recommended that learners have a basic knowledge of Windows.

Goals

- Familiarize with key terms
- Navigate within the SAP system.

Course Based on Software Release

- ERP ECC 6.0

Content

- The SAP Navigation course is designed to familiarize learners with key terms and how to navigate within the SAP system. You will be introduced to the key areas of SAP screens, fields, and features. You will also be introduced to ways in which you can obtain additional help, modify and customize the look of your SAP system, as well as apply more advanced skills.

Notes

- Course length: 2 hours



TERP01 - SAP ERP: INTRODUCTION

Duration: 90 Mins

Delivery Type

- E-Learning

Audience

- This course is appropriate for:
 - Customers and consultants who are new to the SAP ERP solution
 - Customers and consultants with expertise in a specific ERP business process area who want to expand their general knowledge of all business processes
 - IT professionals who will be supporting the business processes used by their organizations.
 - Project team members, who need an understanding of the key integration points between business disciplines supporting business process cycles.
 - Power/Super Users and End Users who want a better understanding of the total business process cycle.

Prerequisites:

Essential

- Conceptual or practical knowledge of how companies manage their businesses.

Recommended

- Basic knowledge in at least one SAP ERP application area

Goals

- At the end of this course you will be able to:
 - Identify the organizational levels used in SAP ERP
 - Explain the functions and structure of master data in supporting ERP business processes
 - Identify the various levels and types of reporting available in SAP ERP

Course Based on Software Release

- Presentations, demonstrations, and practice exercises were carried out using:
 - SAP ERP 6.0

Content

- Using recorded presentations, system demonstrations, practice simulations, quizzes, and assessments you will be introduced to:
 - SAP ERP organizational levels
 - Functions and structures of master data throughout SAP ERP
 - SAP ERP analytical and reporting solutions

Notes

- Course length: 1,5 hours
- This course introduces basic organizational levels and master data concepts used throughout SAP ERP. Detailed explanation of the organizational levels and master data used in the various ERP business processes is covered in the advanced courses associated with each process area.

TERP02 - SAP ERP: INTRODUCTION TO SAP NETWEAVER



Duration: 1 hours

Delivery Type

- E-Learning

Audience

- This course is appropriate for:
 - Customers and consultants who are new to the SAP ERP solution
 - Customers and consultants with expertise in a specific ERP business process area who want to expand their general knowledge of all business processes
 - IT professionals who will be supporting the business processes used by their organizations.
 - Project team members, who need an understanding of the key integration points between business disciplines supporting business process cycles.
 - Power/Super Users and End Users who want a better understanding of the total business process cycle.

Prerequisites:

Essential

- Conceptual or practical knowledge of how companies manage their businesses.

Recommended

- Basic knowledge in at least one SAP ERP application area

Goals

- At the end of this course you will be able to:
 - Identify the different components of SAP NetWeaver
 - Explain the business process functions each NetWeaver component supports.

Course Based on Software Release

- Presentations, demonstrations, and practice exercises were carried out using:
 - SAP ERP 6.0

Content

- Using recorded presentations, system demonstrations, practice simulations, quizzes, and assessments you will be introduced to:
 - How SAP NetWeaver supports business processes
 - The technical infrastructure components SAP NetWeaver

Notes

- This is not a technical course. This course provides an introduction to SAP NetWeaver and its components. To understand more about SAP NetWeaver from a technical perspective please see the various detailed training available under the NetWeaver curriculum.

- Course length: 1 hour



TERP21 - SAP ERP: INTRODUCTION TO PROCESSES IN FINANCIAL ACCOUNTING

Duration: 6 hours

Delivery Type

- E-Learning

Audience

- This course is appropriate for:
 - Customers and consultants who are new to the SAP ERP solution
 - Customers and consultants with expertise in a specific ERP business process area who want to expand their general knowledge of all business processes
 - IT professionals who will be supporting the business processes used by their organizations.
 - Project team members, who need an understanding of the key integration points between business disciplines supporting business process cycles.
 - Power/Super Users and End Users who want a better understanding of the total business process cycle.

Notes

- This course introduces the basic business processes supported by Financial Accounting. Detailed explanation of each business process, examination of alternative process steps and customizing is covered in the advanced courses available as part of the Financial Accounting curriculum.

- Course Length: 6 hours

Prerequisites:

Essential

- TERP01 SAP ERP: Introduction
- TERP02 SAP ERP: Introduction to SAP NetWeaver
- TERP11 SAP ERP: Introduction to NetWeaver Business Intelligence (BI)

Recommended

- Basic knowledge in at least one SAP ERP application area

Goals

- At the end of this course you will be able to:
- Identify Financial Accounting's organizational structure and master data
- Describe the basic business processes supported by:
 - General Ledger
 - Accounts Payable
 - Accounts Receivable
 - Fixed Asset Accounting
- Identify the integration points with other ERP processes
- Execute basic financial reports

Course Based on Software Release

- Presentations, demonstrations, and practice exercises were carried out using:
 - SAP ERP 6.0

Content

- Using recorded presentations, system demonstrations, practice simulations, quizzes, and assessments you will be introduced to:
- Financial Accounting's role in the business
- Organizational levels used in Financial Accounting
- Financial Accounting's components:
 - General Ledger
 - Accounts Payable
 - Accounts Receivable
 - Fixed Asset Accounting
 - Preparation of financial statements

SM001 - INTRODUCTION TO SAP SOLUTION MANAGER



Duration:

Delivery Type

- E-Learning

Audience

- Consultants
- Project Managers
- Project Team Leads
- Project Team Members
- IT Service Desk Managers
- IT Service Desk Members

Prerequisites:

Essential

- Basic knowledge of SAP systems

Recommended

- None

Goals

- Define the concept of the SAP Solution Manager
- Discuss the tools provided by the SAP Solution Manager

Course Based on Software Release

- Solution Manager 7.0

Content

- This course is meant to familiarize you with the principles and terminology of the SAP Solution Manager. You will be introduced to the benefits of using the SAP Solution Manager during the implementation of your SAP solutions and during ongoing support and operations.

Notes

- Course length: 2 hours



TFIN50 - FINANCIAL ACCOUNTING I

Duration: 10 days

Delivery Type

- Instructor-led Classroom

Audience

- Consultants responsible for implementing Financial Accounting with SAP ERP Financials

Prerequisites:

Essential

- Business knowledge of the Fin.Accounting component (Financials)
- The following are included in posting TFIN50:
- SAP125 SAP Navigation
- TERP01 Introduction into processes in SAP ERP
- TERP02 Introduction into processes in SAP NetWeaver
- TERP21 Introduction into processes in Financial Accounting
- which you must study in your own time before the course begins

Recommended

- None

Goals

- Configure and use organizational units, master data and documents for Financial Accounting
- Configure and use the SAP business processes (such as payment, dunning, correspondence and individual closing)

Course Based on Software Release

- SAP ERP Central Component 6.0

Content

- Organizational units, master data and documents for Financial Accounting: company code, fiscal year, currencies, general ledger accounts, customer and vendor master records, profit center, document control, postings, clearing open items, cash journal
- Handling of payments, dunning, correspondence and closing operations in Financial Accounting:
 - Automatic payment program with clearing of open items
 - Automatic dunning program for creating dunning notices and correspondence
 - Overview of month and year-end accounting processes in Financial Accounting
 - Balance sheet and P&L
 - Preparatory closing postings in subledgers and the general ledger
 - Technical organizational and documentary steps in individual closing
 - Closing Cockpit
 - Configuration of periodic closings in Financial Accounting

Notes

- The course works with a SAP ERP 6.0 system and active new general ledger (new G/L).
- The functions of the following SAP releases are also covered in this course: R/3 4.6, R/3 Enterprise Ext. 1.10/ 2.00, SAP ERP Central Component 5.0.
- To ensure that you retain the knowledge gained in this course and successfully complete the certification examination at the end of course TFIN52, we recommend that you consolidate the content in your own time after the course.

TFIN52 - FINANCIAL ACCOUNTING II (INCL. CASE STUDY)



Duration: 10 hours

Delivery Type

- Instructor-led Classroom

Audience

- Consultants responsible for implementing Financial Accounting with SAP ERP Financials

Prerequisites:

Essential

- Business knowledge of the Financial Accounting component (Financials)
- TFIN50 Financial Accounting I
- SM001 SAP Solution Manager Overview
- which you must study in your own time before the course begins

Recommended

- None

Goals

- Implement various business processes and periodic tasks in Asset Accounting, manage master data and configure Asset Accounting
- Apply selected evaluation methods
- Special G/L transactions and document parking
- Apply substitutions and validations as well as archiving to financial accounting
- Utilize your knowledge directly as a consultant in your first period of practice

Course Based on Software Release

- SAP ERP Central Component 6.0

Content

- Organizational structures, master data, and business processes in Asset Accounting:
- Chart of depreciation, depreciation area, asset classes, master data, asset transactions, valuation, periodic processing, information system
- Evaluation methods in Financial Accounting (Infosystem and ABAP reports of general ledger accounting, accounts receivable accounting, and accounts payable accounting, report variants, selection variables in variants, List Viewer, sample evaluations using the drilldown reporting tool)
- Special G/L transactions and document parking
- Validations and substitutions in Financial Accounting
- Archiving in Financial Accounting

Notes

- The course works with a SAP ERP 6.0 system and active new general ledger (new G/L).

- The functions of the following SAP releases are also covered in this course: R/3 4.6, R/3 Enterprise Ext. 1.10/ 2.00, SAP ERP Central Component 5.0.

- To ensure that you retain the knowledge gained in this course and successfully complete the certification examination at the end of course TFIN52, we recommend that you consolidate the content in your own time after the course.

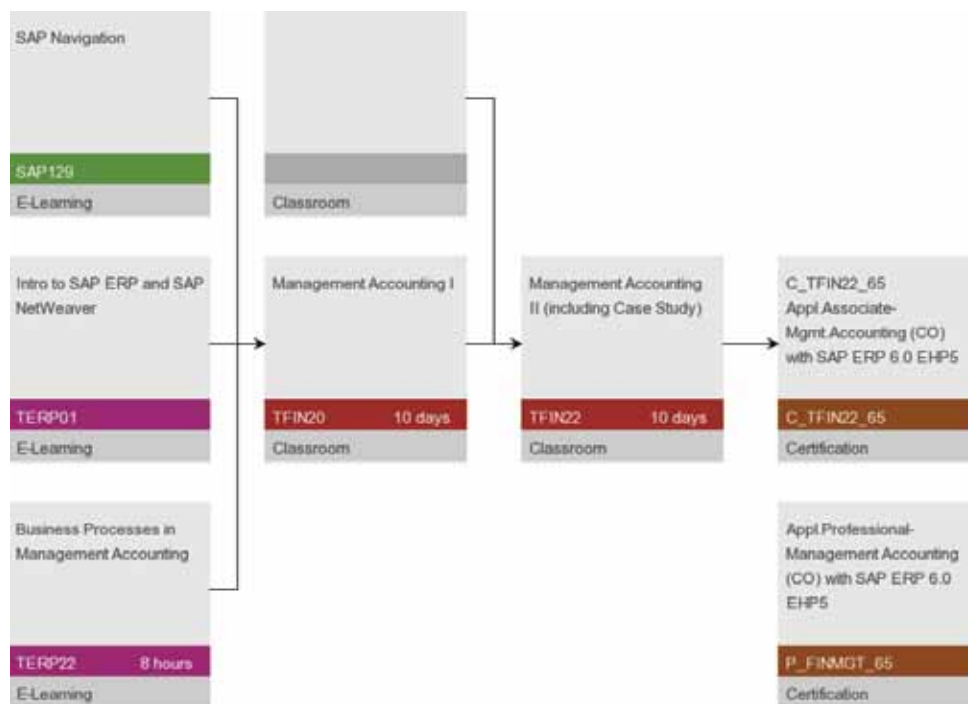
- Case study: implementation of a fictitious demo company using specific business processes, configuration and mapping of the company structure, master data, and business processes in the SAP system

- Review and certification preparation

- Certification examination for Certified Application Associate - Financial Accounting with SAP ERP 6.04 on the content of the courses SAP125, TERP01, TERP02, TERP21, SM001, TFIN50, TFIN52



Management Accounting (CO)



Curriculum Map Legend

| | |
|--------------------|---------------------------------------|
| Overview | Essential |
| Foundation | Recommended |
| Detailed | Classroom Training |
| Delta Knowledge | Virtual Classroom Training |
| Consultant Academy | E-Learning |
| Under development | E-Learning (Online Knowledge Product) |
| Certification | |

SAP Managerial Accounting

With the managerial accounting functionality, you can collect, assign, and analyze costs to evaluate the profitability of markets, channels, products, and customer segments. As a result, you get the detailed information you need to proactively manage global business performance, profit, and growth.

- Training courses for this curriculum will provide you with the knowledge you need to:
- Collect overhead, direct, and indirect costs at the event level
- Assign costs to cost structures in a clear, traceable manner
- Follow a best-practice, structured approach to cost assignments, from overhead management down to the product or market segment
- Drill down into supporting events and documents from high-level, operational results
- Analyze profitability by product, market, customer, service, or channel segment
- Hold managers at all levels of the organization accountable for efficient and effective use of resources



SAP129 - SAP NAVIGATION



Duration: 2 hours

Delivery Type

- E-Learning

Audience

- Beginner users
- Project team members
- Project leaders
- Support personnel
- SAP consultants
- Technical consultants
- Sales
- Super users
- End users

Prerequisites:

Essential

- None

Recommended

- There are no required prerequisites for taking this course;
- however, it is recommended that learners have a basic knowledge of Windows.

Goals

- Familiarize with key terms
- Navigate within the SAP system.

Course Based on Software Release

- ERP ECC 6.0

Content

- The SAP Navigation course is designed to familiarize learners with key terms and how to navigate within the SAP system. You will be introduced to the key areas of SAP screens, fields, and features. You will also be introduced to ways in which you can obtain additional help, modify and customize the look of your SAP system, as well as apply more advanced skills.

Notes

- Course length: 2 hours



TERP01 - SAP ERP: INTRODUCTION

Duration: 90 Mins

Delivery Type

- E-Learning

Audience

- This course is appropriate for:
 - Customers and consultants who are new to the SAP ERP solution
 - Customers and consultants with expertise in a specific ERP business process area who want to expand their general knowledge of all business processes
 - IT professionals who will be supporting the business processes used by their organizations.
 - Project team members, who need an understanding of the key integration points between business disciplines supporting business process cycles.
 - Power/Super Users and End Users who want a better understanding of the total business process cycle.

Prerequisites:

Essential

- Conceptual or practical knowledge of how companies manage their businesses.

Recommended

- Basic knowledge in at least one SAP ERP application area

Goals

- At the end of this course you will be able to:
 - Identify the organizational levels used in SAP ERP
 - Explain the functions and structure of master data in supporting ERP business processes
 - Identify the various levels and types of reporting available in SAP ERP

Course Based on Software Release

- Presentations, demonstrations, and practice exercises were carried out using:
 - SAP ERP 6.0

Content

- Using recorded presentations, system demonstrations, practice simulations, quizzes, and assessments you will be introduced to:
 - SAP ERP organizational levels
 - Functions and structures of master data throughout SAP ERP
 - SAP ERP analytical and reporting solutions

Notes

- Course length: 1,5 hours
- This course introduces basic organizational levels and master data concepts used throughout SAP ERP. Detailed explanation of the organizational levels and master data used in the various ERP business processes is covered in the advanced courses associated with each process area.

TERP02 - SAP ERP: INTRODUCTION TO SAP NETWEAVER



Duration: 1 hours

Delivery Type

- E-Learning

Audience

- This course is appropriate for:
 - Customers and consultants who are new to the SAP ERP solution
 - Customers and consultants with expertise in a specific ERP business process area who want to expand their general knowledge of all business processes
 - IT professionals who will be supporting the business processes used by their organizations.
 - Project team members, who need an understanding of the key integration points between business disciplines supporting business process cycles.
 - Power/Super Users and End Users who want a better understanding of the total business process cycle.

Prerequisites:

Essential

- Conceptual or practical knowledge of how companies manage their businesses.

Recommended

- Basic knowledge in at least one SAP ERP application area

Goals

- At the end of this course you will be able to:
 - Identify the different components of SAP NetWeaver
 - Explain the business process functions each NetWeaver component supports.

Course Based on Software Release

- Presentations, demonstrations, and practice exercises were carried out using:
 - SAP ERP 6.0

Content

- Using recorded presentations, system demonstrations, practice simulations, quizzes, and assessments you will be introduced to:
 - How SAP NetWeaver supports business processes
 - The technical infrastructure components SAP NetWeaver

Notes

- This is not a technical course. This course provides an introduction to SAP NetWeaver and its components. To understand more about SAP NetWeaver from a technical perspective please see the various detailed training available under the NetWeaver curriculum.

- Course length: 1 hour



TERP22 - SAP ERP: INTRODUCTION TO PROCESSES IN MANAGEMENT ACCOUNTING

Duration: 6 hours

Delivery Type

- E-Learning

Audience

- This course is appropriate for:
 - Customers and consultants who are new to the SAP ERP solution
 - Customers and consultants with expertise in a specific ERP business process area who want to expand their general knowledge of all business processes
 - IT professionals who will be supporting the business processes used by their organizations.
 - Project team members, who need an understanding of the key integration points between business disciplines supporting business process cycles. • Power/Super Users and End Users who want a better understanding of the total business process cycle.

Prerequisites:

Essential

- TERP01 SAP ERP: Introduction
- TERP02 SAP ERP: Introduction to SAP NetWeaver
- TERP11 SAP ERP: Introduction to NetWeaver Business Intelligence (BI)

Recommended

- TERP21 SAP ERP: Introduction to Processes in Financial Accounting
- Basic knowledge in at least one SAP ERP application area

Goals

- At the end of this course you will be able to:
- Identify Management Accounting's organizational structure and master data
- Explain the functions supported by:
 - Cost Center Accounting
 - Internal Orders
 - Profitability Analysis
 - Profit Center Accounting
 - Product Costing
- Identify the integration points with other ERP business disciplines; Sales & Distribution, Materials Management, etc.
- Execute basic management accounting reports & Distribution, Materials Management, etc.
- Execute basic management accounting reports

Course Based on Software Release

- Presentations, demonstrations, and practice exercises were carried out using:
 - SAP ERP 6.0

Notes

- This course introduces the basic business processes supported by Management Accounting. Detailed explanation of each business process, examination of alternative process steps and customizing is covered in the advanced courses available as part of the Management Accounting curriculum.
- Course Length: 6 hours

Content

- Using recorded presentations, system demonstrations, practice simulations, quizzes, and assessments you will be introduced to:
 - Management Accounting's role in the business
 - Organizational levels used in Management Accounting
 - Financial Accounting's components:
 - Cost Center Accounting
 - Internal Orders
 - Profit Center Accounting
 - Profitability Analysis
 - Product Costing

SM001 - INTRODUCTION TO SAP SOLUTION MANAGER



Duration: 240 Mins

Delivery Type

- E-Learning

Audience

- Consultants
- Project Managers
- Project Team Leads
- Project Team Members
- IT Service Desk Managers
- IT Service Desk Members

Prerequisites:

Essential

- Basic knowledge of SAP systems

Recommended

- None

Goals

- Define the concept of the SAP Solution Manager
- Discuss the tools provided by the SAP Solution Manager

Course Based on Software Release

- Solution Manager 7.1

Content

- This course is meant to familiarize you with the principles and terminology of the SAP Solution Manager. You will be introduced to the benefits of using the SAP Solution Manager during the implementation of your SAP solutions and during ongoing support and operations.

Notes

- Course length: 2 hour



TFIN20 - MANAGEMENT ACCOUNTING I

Duration: 10 days

Delivery Type

- Instructor-led Classroom

Audience

- Consultants responsible for implementing Management Accounting

Prerequisites:

Essential

- Knowledge of Management Accounting (Controlling)
- TFIN20 contains:
 - E-Learnings SAP125 (SAP Navigation)
 - TERP01 (Introduction into processes in ERP)
 - TERP02 (Introduction into processes in Netweaver)
 - TERP22 (Introduction into processes in Management Accounting)
 - to be prepared before starting the training course TFIN20

Recommended

- None

Goals

- After this training class you are able to:
 - Implement overhead management (Actual Postings and periodic closing activities)
 - Perform cost center planning
 - Perform product cost planning
 - Implement cost object controlling

Course Based on Software Release

- SAP ERP Central Component 6.0

Content

- Organisation Units and Master Data of Overhead Management (Cost Elements, Cost Centers, Activity Types, statistical Key Figures, Internal Orders)
- Debiting Cost Centers and Internal Orders
- Validation, Substitution, Reposting, Direct Activity Allocation
- periodic Postings of Overhead Management (Periodic Reposting, Allocation, Overhead Rates)
- Planning of Costs, Activities and Prices
- Integrated Planning in Management Accounting
- Cost Estimate
- Cost Estimates with Material
- Scenario of Cost Object Controlling

Notes

- TFIN20 is based on a system with active new general ledger. This classroom training also covers functions of the following releases: R/3 4.6, R/3 Enterprise Ext. 1.10/2.00, SAP ERP Central Component 6.0
- To make sure to be successful doing the test exam it is necessary to repeat the content of the classroom training after the training.

TFIN22 - MANAGEMENT ACCOUNTING II (INCL. CASE STUDY)



Duration: 10 days

Delivery Type

- Instructor-led Classroom

Audience

- Consultants responsible for implementing Management Accounting

Prerequisites:

Essential

- Knowledge of Management Accounting (Controlling)
- TFIN20 (Management Accounting I)
- TFIN22 contains:
- E-Learning SM001 (Solution Manager Overview),
- to be prepared before starting the training course TFIN20

Recommended

- None

Goals

- After this training class you are able to:
 - Implement Profit Center Accounting with new general ledger
 - Implement Profitability Analysis
 - Create reports with Report Painter and Drilldown Reporting
 - Implement a bluepring of a business scenario during a Case Study

Course Based on Software Release

- SAP ERP Central Component 6.0

Content

- Profit Center Master Data and Assigning Master Data (in new general ledger)
- Actual Postings of Profit Centers (in new general ledger)
- Profitcenter-Planning (in new general ledger)
- Data Structures of Profitability Accounting
- Derivation of Profitability Segments
- Valuation of Value Fields
- Actual Posting in Profitability Analysis
- Planning in Profitability Analysis
- Report Painter
- Drilldown Reporting
- integrated Case Study: Implementing a business case scenario , Configuration of Enterprise Structure, Master Data and Business Cases in an SAP-System
- Review und Preparation of Certification
- Certification: Certified Application Associate - Management Accounting with SAP ERP 6 with training courses SAP125, ERP001, ERP020, TFIN20, SM001, TFIN22

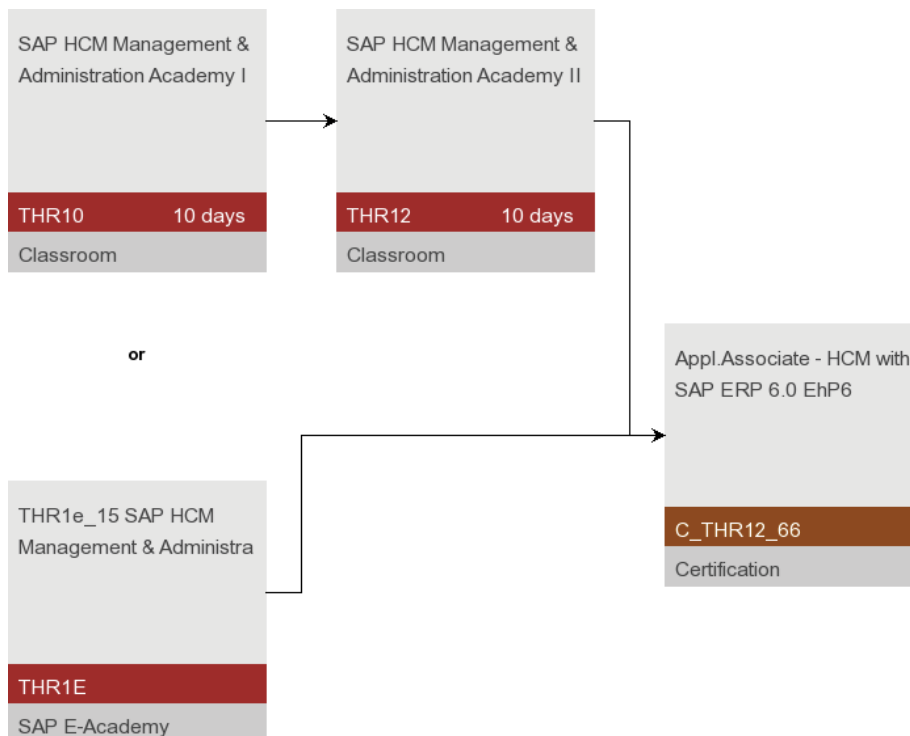
Notes

- TFIN22 is based on a system with active new general ledger. This classroom training also covers functions of the following releases: R/3 4.6, R/3 Enterprise Ext. 1.10/2.00, SAP ERP Central Component 6.0.
- To make sure to be successful doing the test exam it is necessary to repeat the content of the classroom training after the training.



Sap Human Resources

Human Resources - Management & Administration



Curriculum Map Legend

| | |
|--------------------|---------------------------------------|
| Overview | Essential |
| Foundation | Recommended |
| Detailed | Classroom Training |
| Delta Knowledge | Virtual Classroom Training |
| Consultant Academy | E-Learning |
| Under development | E-Learning (Online Knowledge Product) |
| Certification | |



SAP Human Capital Management

SAP provides a complete set of curricula to help you leverage your human capital and maximize their contribution to the success of your business. With these courses, you'll learn how to configure your personnel master data effectively – so you can rely on consistent, predictable access to records. Plus, you'll learn how to manage payroll, recruit and retain key employees, define roles and access rights and leverage analytics and reporting tools. As a result, you'll be able to apply this knowledge as a solution consultant in a team setting.



SAP129 - SAP NAVIGATION



Duration: 2 hours

Delivery Type

- E-Learning

Audience

- Beginner users
- Project team members
- Project leaders
- Support personnel
- SAP consultants
- Technical consultants
- Sales
- Super users
- End users

Prerequisites:

Essential

- None

Recommended

- There are no required prerequisites for taking this course;
- however, it is recommended that learners have a basic knowledge of Windows.

Goals

- Familiarize with key terms
- Navigate within the SAP system.

Course Based on Software Release

- ERP ECC 6.0

Content

- The SAP Navigation course is designed to familiarize learners with key terms and how to navigate within the SAP system. You will be introduced to the key areas of SAP screens, fields, and features. You will also be introduced to ways in which you can obtain additional help, modify and customize the look of your SAP system, as well as apply more advanced skills.

Notes

- Course length: 2 hours



TERP01 - SAP ERP: INTRODUCTION

Duration:

Delivery Type

- E-Learning

Audience

- This course is appropriate for:
 - Customers and consultants who are new to the SAP ERP solution
 - Customers and consultants with expertise in a specific ERP business process area who want to expand their general knowledge of all business processes
 - IT professionals who will be supporting the business processes used by their organizations.
 - Project team members, who need an understanding of the key integration points between business disciplines supporting business process cycles.
 - Power/Super Users and End Users who want a better understanding of the total business process cycle.

Prerequisites:

Essential

- Conceptual or practical knowledge of how companies manage their businesses.

Recommended

- Basic knowledge in at least one SAP ERP application area

Goals

- At the end of this course you will be able to:
 - Identify the organizational levels used in SAP ERP
 - Explain the functions and structure of master data in supporting ERP business processes
 - Identify the various levels and types of reporting available in SAP ERP

- Course length: 1,5 hours

Course Based on Software Release

- Presentations, demonstrations, and practice exercises were carried out using:
 - SAP ERP 6.0

Content

- Using recorded presentations, system demonstrations, practice simulations, quizzes, and assessments you will be introduced to:
 - SAP ERP organizational levels
 - Functions and structures of master data throughout SAP ERP
 - SAP ERP analytical and reporting solutions

- This course introduces basic organizational levels and master data concepts used throughout SAP ERP. Detailed explanation of the organizational levels and master data used in the various ERP business processes is covered in the advanced courses associated with each process area.

TERP02 - SAP ERP: INTRODUCTION TO SAP NETWEAVER



Duration: 1 hours

Delivery Type

- E-Learning

Audience

- This course is appropriate for:
 - Customers and consultants who are new to the SAP ERP solution
 - Customers and consultants with expertise in a specific ERP business process area who want to expand their general knowledge of all business processes
 - IT Professionals who will be supporting the business processes used by their organizations.
 - Project team members, who need an understanding of the key integration points between business disciplines supporting business process cycles.
 - Power/Super Users and End Users who want a better understanding of the total business process cycle.

Prerequisites:

Essential

- Conceptual or practical knowledge of how companies manage their businesses.

Recommended

- Basic knowledge in at least one SAP ERP application area

Goals

- At the end of this course you will be able to:
 - Identify the different components of SAP NetWeaver
 - Explain the business process functions each NetWeaver component supports.

Course Based on Software Release

- Presentations, demonstrations, and practice exercises were carried out using:
 - SAP ERP 6.0

Content

- Using recorded presentations, system demonstrations, practice simulations, quizzes, and assessments you will be introduced to:
 - How SAP NetWeaver supports business processes
 - The technical infrastructure components SAP NetWeaver

Notes

- This is not a technical course. This course provides an introduction to SAP NetWeaver and its components. To understand more about SAP NetWeaver from a technical perspective please see the various detailed training available under the NetWeaver curriculum.
- Course length: 1 hour



TERP31 - SAP ERP: INTRODUCTION TO PROCESSES IN HUMAN CAPITAL MANAGEMENT (HCM)

Duration: 5 hours

Delivery Type

- E-Learning

Audience

- This course is appropriate for:
 - Customers and consultants who are new to the SAP ERP solution
 - Customers and consultants with expertise in a specific ERP business process area who want to expand their general knowledge of all business processes
 - IT professionals who will be supporting the business processes used by their organizations.
 - Project team members, who need an understanding of the key integration points between business disciplines supporting business process cycles.
 - Power/Super Users and End Users who want a better understanding of the total business process cycle.

Prerequisites:

Essential

- TERP01 SAP ERP: Introduction
- TERP02 SAP ERP: Introduction to SAP NetWeaver
- TERP11 SAP ERP: Introduction to NetWeaver Business Intelligence (BI)

Recommended

- Basic knowledge in at least one SAP ERP application area

Goals

- At the end of this course you will be able to:
 - Identify Human Capital Management's organizational structure and master data
 - Explain how employee records are managed
 - Describe the basic business processes supported by HCM
 - Identify the integration points with other ERP processes
 - Explain the HCM reporting and analysis tools

Course Based on Software Release

- Presentations, demonstrations, and practice exercises were carried out using:
 - SAP ERP 6.0

Content

- Using recorded presentations, system demonstrations, practice simulations, quizzes, and assessments you will be introduced to:
 - Organizational structures used in HCM
 - How employee records are managed
 - Basic business processes of HCM
 - HCM reporting and analysis

Notes

- This course introduces the basic business processes supported by HCM. Detailed explanation of each business process, examination of alternative process steps and customizing is covered in the advanced courses available as part of the HCM curriculum

- Course Length: 5 hours

SM001 - INTRODUCTION TO SAP SOLUTION MANAGER



Duration: 240 Mins

Delivery Type

- E-Learning

Audience

- Consultants
- Project Managers
- Project Team Leads
- Project Team Members
- IT Service Desk Managers
- IT Service Desk Members

Prerequisites:

Essential

- Basic knowledge of SAP systems

Recommended

- None

Goals

- Define the concept of the SAP Solution Manager
- Discuss the tools provided by the SAP Solution Manager

Course Based on Software Release

- Solution Manager 7.1

Content

- This course is meant to familiarize you with the principles and terminology of the SAP Solution Manager. You will be introduced to the benefits of using the SAP Solution Manager during the implementation of your SAP solutions and during ongoing support and operations.

Notes

- Course Length: 2 hours



THR10 - MANAGEMENT & ADMINISTRATION I

Duration: 10 days

Delivery Type

- Instructor-led Classroom

Audience

- Solution consultants who are responsible for implementing Personnel Administration with SAP ERP Human Capital Management (SAP ERP HCM), in particular in the areas of master data, time management, and reporting

Prerequisites:

Essential

- Business knowledge in the area of human resources
- The following are included in posting THR10:
- SAP125 SAP Navigation
- TERPO1 SAP ERP: Introduction
- TERPO2 SAP ERP: Introduction to SAP NetWeaver
- TERP31 SAP ERP: Introduction to Processes in HCM
- which you must study in your own time before the start of course THR10

Recommended

- None

Goals

- Explain the basic processes of human resources
- Adjust personnel administration data for customer-specific requirements
- Adjust the main aspects of time data
- Carry out reporting in Human Resource Management

Course Based on Software Release

- SAP ERP 6.0

Content

- Overview of SAP ERP HCM: Navigation and structures in Human Resource Management, Employee Self-Service, Manager's Desktop, recruitment, personnel development, personnel cost planning, training and event management, compensation management
- Configuration of human resources master data: Enterprise, personnel and organizational structure, default values and features, billing data: Pay scale and wage type structure, pay scale reclassification and increase, work flows and user interfaces: for example, screen modification and personnel actions, management of global employees
- Configuration of Time Management: Overview of Time Management and its integration with other applications, configuring the work schedule and setting up the planned working time, creating attendance and absence types and their payments, managing time quotas and quota deduction, and configuring the Time Manager's Workplace (TMW)
- Reporting in Human Resource Management: Infosystems, Ad Hoc Query, SAP Query, payroll infotypes and simulated info types of Time Management, Human Resource Management in SAP NetWeaver Business Intelligence
- Mini case study

Notes

- To ensure that you retain the knowledge gained in this course and successfully complete the certification examination at the end of course THR12, we recommend that you consolidate the content in your own time after the course.
- TERPO1, TERPO2 and TERP31 are only available in English language.

THR12 - MANAGEMENT & ADMINISTRATION II (INCL. CASE STUDY)



Duration: 10 days

Delivery Type

- Instructor-led Classroom

Audience

- Solution consultants responsible for implementing Payroll and Organizational Management with SAP ERP Human Capital Management (SAP ERP HCM)

Prerequisites:

Essential

- THR10 Management & Administration I
- The following e-learning is included in posting THR12:
- SM001 Introduction to SAP Solution Manager
- which you must study in your own time before the start of course

Recommended

- None

Goals

- Explain how Payroll is organized, perform payroll runs, and configure gross payroll
- Configure organizational management
- Utilize your knowledge directly as a junior consultant in your first period of practice

Course Based on Software Release

- SAP ERP 6.0

Content

- Organization and configuration of payroll: Identifying and operating control mechanisms available in the payroll system, personnel calculation schema and rules, encoding characteristics of wage types, checking the payroll using the payroll log, determining hourly rates, calculating averages, factoring, developing rules to automate the payment of working hours, processing absences in payroll, retroactive accounting
- Organizational management: Maintenance of the organizational structure, matrix organization and structures, reporting and reporting tools, Manager's Desktop and Manager Self Service, integration with other HR components
- Integrated case study: Implementation of a fictitious demo company using specific business processes: configuration and mapping of the company structure, master data, and business processes in the SAP system
- Review and certification preparation
- Certification examination for Solution Consultant Human Resources – Management & Administration with the content of courses SAP125, TERP01, TERP31, THR10, SM001, THR12

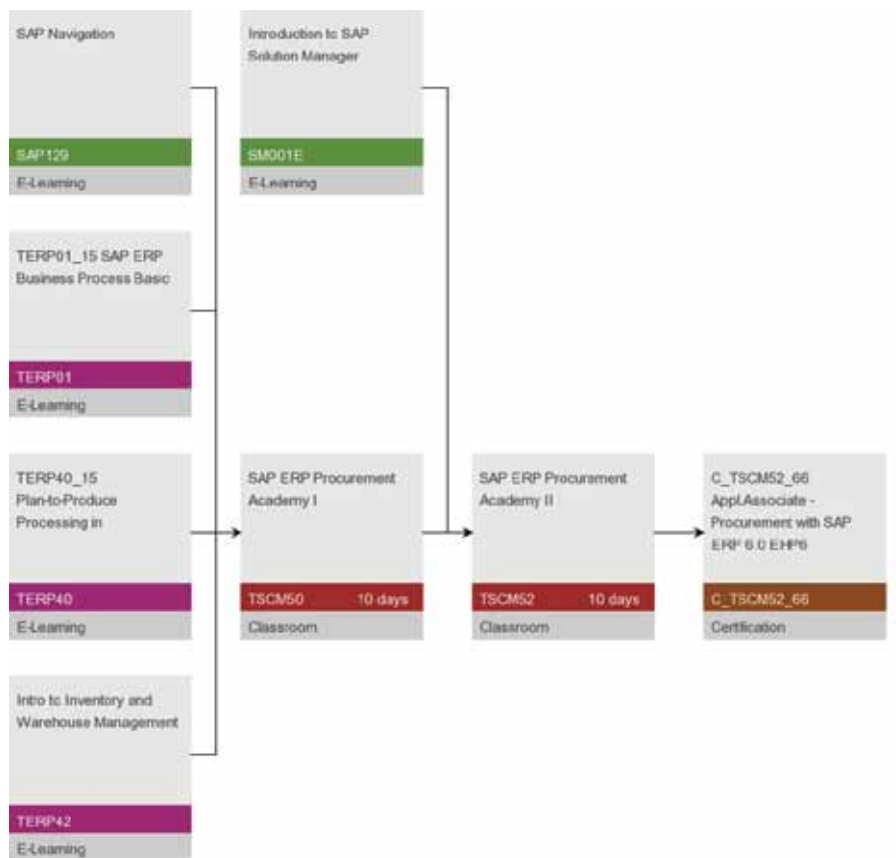
Notes

- To ensure that you retain the knowledge gained in this course and successfully complete the certification examination at the end of course THR12, we recommend that you consolidate the content in your own time after the course.



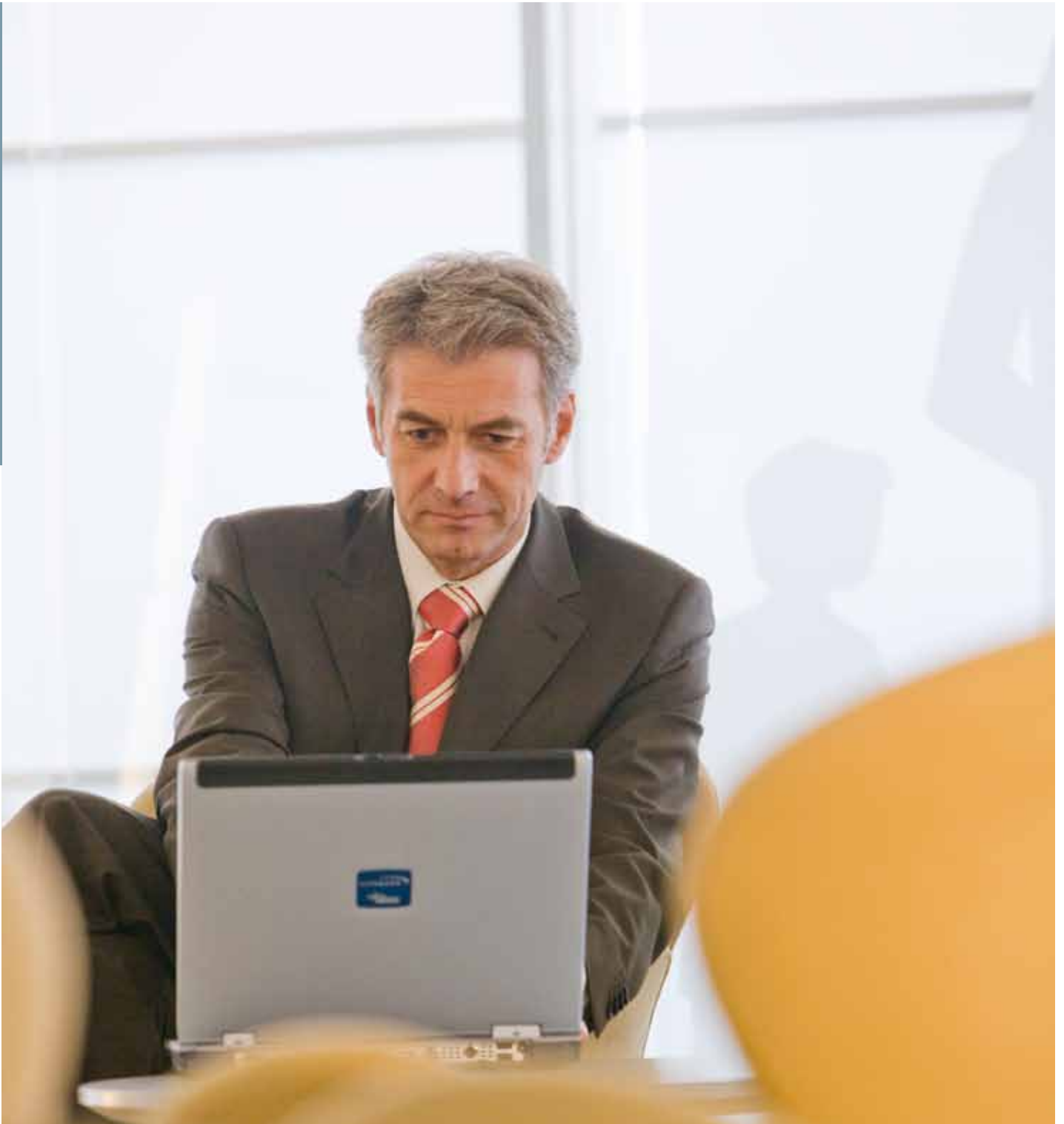
Sap Supply Chain Management

SAP SCM (Procurement) - Materials Management



Curriculum Map Legend

| | |
|--------------------|---|
| Overview | — Essential |
| Foundation | -- Recommended |
| Detailed | 🏠 Classroom Training |
| Delta Knowledge | 🖥️ Virtual Classroom Training |
| Consultant Academy | 💻 E-Learning |
| Under development | 📖 E-Learning (Online Knowledge Product) |
| Certification | |



SAP SCM – SAP Procurement (Materials Management)

With functionality for direct procurement, SAP Supply Chain Management gives you the power to create and manage end-to-end procurement processes -- from strategic sourcing, to purchase order processing, to invoicing. The SAP SCM procurement curriculum can help you optimize processes such as purchasing, inventory management, invoice verification, external procurement, services, pricing, forecasting, reporting, cross applications, and customizations.

SAP129 - SAP NAVIGATION



Duration: 2 hours

Delivery Type

- E-Learning

Audience

- Beginner users
- Project team members
- Project leaders
- Support personnel
- SAP consultants
- Technical consultants
- Sales
- Super users
- End users

Prerequisites:

Essential

- None

Recommended

- There are no required prerequisites for taking this course;
- however, it is recommended that learners have a basic knowledge of Windows.

Goals

- Familiarize with key terms
- Navigate within the SAP system.

Notes

- Course length: 2 hours

Course Based on Software Release

- ERP ECC 6.0

Content

- The SAP Navigation course is designed to familiarize learners with key terms and how to navigate within the SAP system. You will be introduced to the key areas of SAP screens, fields, and features. You will also be introduced to ways in which you can obtain additional help, modify and customize the look of your SAP system, as well as apply more advanced skills.



TERP01 - SAP ERP: INTRODUCTION

Duration: 240 Mins

Delivery Type

- E-Learning

Audience

- This course is appropriate for:
 - Customers and consultants who are new to the SAP ERP solution
 - Customers and consultants with expertise in a specific ERP business process area who want to expand their general knowledge of all business processes
 - IT professionals who will be supporting the business processes used by their organizations.
 - Project team members, who need an understanding of the key integration points between business disciplines supporting business process cycles.
 - Power/Super Users and End Users who want a better understanding of the total business process cycle.

Prerequisites:

Essential

- Conceptual or practical knowledge of how companies manage their businesses.

Recommended

- Basic knowledge in at least one SAP ERP application area

Goals

- At the end of this course you will be able to:
 - Identify the organizational levels used in SAP ERP
 - Explain the functions and structure of master data in supporting ERP business processes
 - Identify the various levels and types of reporting available in SAP ERP

Course Based on Software Release

- Presentations, demonstrations, and practice exercises were carried out using:
 - SAP ERP 6.0

Content

- Using recorded presentations, system demonstrations, practice simulations, quizzes, and assessments you will be introduced to:
 - SAP ERP organizational levels
 - Functions and structures of master data throughout SAP ERP
 - SAP ERP analytical and reporting solutions

Notes

- Course Length: 1,5 hours
- This course introduces basic organizational levels and master data concepts used throughout SAP ERP. Detailed explanation of the organizational levels and master data used in the various ERP business processes is covered in the advanced courses associated with each process area.

TERP02 - SAP ERP: INTRODUCTION TO SAP NETWEAVER

Duration: 1 hours

Delivery Type

- E-Learning

Audience

- This course is appropriate for:
 - Customers and consultants who are new to the SAP ERP solution
 - Customers and consultants with expertise in a specific ERP business process area who want to expand their general knowledge of all business processes
 - IT professionals who will be supporting the business processes used by their organizations.
 - Project team members, who need an understanding of the key integration points between business disciplines supporting business process cycles.
 - Power/Super Users and End Users who want a better understanding of the total business process cycle.

Prerequisites:

Essential

- Conceptual or practical knowledge of how companies manage their businesses.

Recommended

- Basic knowledge in at least one SAP ERP application area

Goals

- At the end of this course you will be able to:
 - Identify the different components of SAP NetWeaver
 - Explain the business process functions each NetWeaver component supports.

Course Based on Software Release

- Presentations, demonstrations, and practice exercises were carried out using:
 - SAP ERP 6.0

Content

- Using recorded presentations, system demonstrations, practice simulations, quizzes, and assessments you will be introduced to:
 - How SAP NetWeaver supports business processes
 - The technical infrastructure components SAP NetWeaver

Notes

- This is not a technical course. This course provides an introduction to SAP NetWeaver and its components. To understand more about SAP NetWeaver from a technical perspective please see the various detailed training available under the NetWeaver curriculum.
- Course length: 1 hours



TERP41 - SAP ERP: INTRODUCTION TO PROCESSES IN PROCUREMENT

Duration: 6 hours

Delivery Type

- E-Learning

Audience

- This course is appropriate for:
 - Customers and consultants who are new to the SAP ERP solution
 - Customers and consultants with expertise in a specific ERP business process area who want to expand their general knowledge of all business processes
 - IT professionals who will be supporting the business processes used by their organizations.
 - Project team members, who need an understanding of the key integration points between business disciplines supporting business process cycles.
 - Power/Super Users and End Users who want a better understanding of the total business process cycle.

Prerequisites:

Essential

- TERP01 SAP ERP: Introduction
- TERP02 SAP ERP: Introduction to SAP NetWeaver
- TERP11 SAP ERP: Introduction to NetWeaver Business Intelligence (BI)

Recommended

- TERP51 SAP ERP: Introduction into Processes in Material Planning
- TERP54 SAP ERP: Introduction into Processes in Lifecycle Data Management
- Basic knowledge in at least one SAP ERP application area

Goals

- At the end of this course you will be able to:
 - Identify Procurement's organizational structure and master data
 - Describe the procurement cycle for stock and consumable materials covering the basic steps from purchase requisition through vendor payment
 - Identify the key integration points with other ERP processes
 - Describe the types of reports and analysis tools used in procurement

Course Based on Software Release

- Presentations, demonstrations, and practice exercises were carried out using:
 - SAP ERP 6.0

Notes

- This course introduces SAP ERP's basic procurement processes. Detailed explanation of each business process, examination of alternative process steps and customizing is covered in the advanced courses available as part of the ERP Procurement curriculum.

- Course Length: 6 hours

Content

- Using recorded presentations, system demonstrations, practice simulations, quizzes, and assessments you will be introduced to:
 - Procurement's organizational structure and master data
 - How purchase requisitions and orders are used in the procurement process
 - Goods receipt and transfer posting
 - Invoice verification and vendor payment
 - Basic procurement reports

TERP42 - SAP ERP: INTRODUCTION TO PROCESSES IN INVENTORY & WAREHOUSE MANAGEMENT



Duration: 3 hours

Delivery Type

- E-Learning

Audience

- This course is appropriate for:
 - Customers and consultants who are new to the SAP ERP solution
 - Customers and consultants with expertise in a specific ERP business process area who want to expand their general knowledge of all business processes
 - IT professionals who will be supporting the business processes used by their organizations.
 - Project team members, who need an understanding of the key integration points between business disciplines supporting business process cycles.
 - Power/Super Users and End Users who want a better understanding of the total business process cycle.

Prerequisites:

Essential

- TERP01 SAP ERP: Introduction
- TERP02 SAP ERP: Introduction to SAP NetWeaver
- TERP11 SAP ERP: Introduction to NetWeaver Business Intelligence (BI)

Recommended

- TERP41 SAP ERP: Introduction to Processes in Procurement
- TERP54 SAP ERP: Introduction into Processes in Lifecycle Data Management
- Basic knowledge in at least one SAP ERP application area

Goals

- At the end of this course you will be able to:
 - Identify the organization levels and master data used in Inventory and Warehouse Management
 - Describe the difference between a stock transfer and a transfer posting
 - Explain the Warehouse Management processes used for receiving materials procured on a purchase order and putting them away in a warehouse
 - Describe the physical inventory process steps

Course Based on Software Release

- Presentations, demonstrations, and practice exercises were carried out using:
 - SAP ERP 6.0

Notes

- This course introduces the basic business processes carried out in Inventory Management and Warehouse Management. Detailed explanation of each business process, examination of alternative process steps and customizing is covered in the advanced courses available as part of the ERP Inventory and Warehouse Management curriculums.

- Course length: 3 hours

Content

- Using recorded presentations, system demonstrations, practice simulations, quizzes, and assessments you will be introduced to:
 - Organizational levels and master data used to support Inventory Management and Warehouse Management
 - The difference between stock transfers and transfer postings
 - How goods receipts are processed in Warehouse Management
 - Physical inventory process.



SM001 - INTRODUCTION TO SAP SOLUTION MANAGER

Duration: 240 Mins

Delivery Type

- E-Learning

Audience

- Consultants
- Project Managers
- Project Team Leads
- Project Team Members
- IT Service Desk Managers
- IT Service Desk Members

Prerequisites:

Essential

- Basic knowledge of SAP systems

Recommended

- None

Goals

- Define the concept of the SAP Solution Manager
- Discuss the tools provided by the SAP Solution Manager

Course Based on Software Release

- Solution Manager 7.1

Content

- This course is meant to familiarize you with the principles and terminology of the SAP Solution Manager. You will be introduced to the benefits of using the SAP Solution Manager during the implementation of your SAP solutions and during ongoing support and operations.

Notes

- Course Length: 2 hours

TSCM50 - PROCUREMENT I



Duration: 10 days

Delivery Type

- Instructor-led Classroom

Audience

- Solution consultants who are responsible for implementing the procurement functions of SAP ERP.

Prerequisites:

Essential

- Practical business knowledge of external procurement
- SAP125 (SAP Navigation)
- TERPO1 (SAP ERP: Introduction)
- TERPO2 (SAP ERP: Introduction to SAP NetWeaver)
- TERP41 (SAP ERP: Introduction to Processes in Procurement)
- TERP42 (SAP ERP: Introduction to Processes in Inv.& Warehouse Mgmt.
- (These e-learning are included in posting TSCM50 and you have to study them in your own time before you start the course TSCM50).

Recommended

- None

Goals

- Explain and use the basic functions of external procurement in SAP ERP
- Make the necessary settings for consumption-based planning
- Use special functions of purchasing
- Operate with the functions of logistics invoice verification

Course Based on Software Release

- SAP ERP 6.0

Content

- Procurement of stock material, consumable material, and services
- Master data of materials management: material, vendor, purchasing info record, source list, quota arrangement
- Documents and functions of purchasing: Purchase requisition, request for quotation/quotation, purchase order, contract, scheduling agreement, source determination, and document release procedure
- Planning procurement proposals using consumption-based planning, especially the procedure of reorder point planning
- Details and customizing settings of logistics invoice verification
- Reports
- Automation options in the external procurement process

Notes

- To ensure that you retain the knowledge gained in this course and successfully complete the certification examination at the end of course TSCM52, we recommend that you consolidate the content in your own time after the course.



TSCM52 - PROCUREMENT II (INCL. CASE STUDY)

Duration: 10 days

Delivery Type

- Instructor-led Classroom

Audience

- Solution consultants who are responsible for implementing the procurement functions of SAP ERP

Prerequisites:

Essential

- TSCM50 Procurement I
- SM001 Introduction to SAP Solution Manager
- (This e-learning is included in posting TSCM52 and you have to study it in your own time)

Recommended

- None

Goals

- Enter goods movements in the SAP system and make the relevant settings for special functions
- Prepare and perform a physical inventory of warehouse stock
- Make customizing settings in materials management
- Utilize their knowledge directly as a junior consultant in a first period of practice

Course Based on Software Release

- SAP ERP 6.0

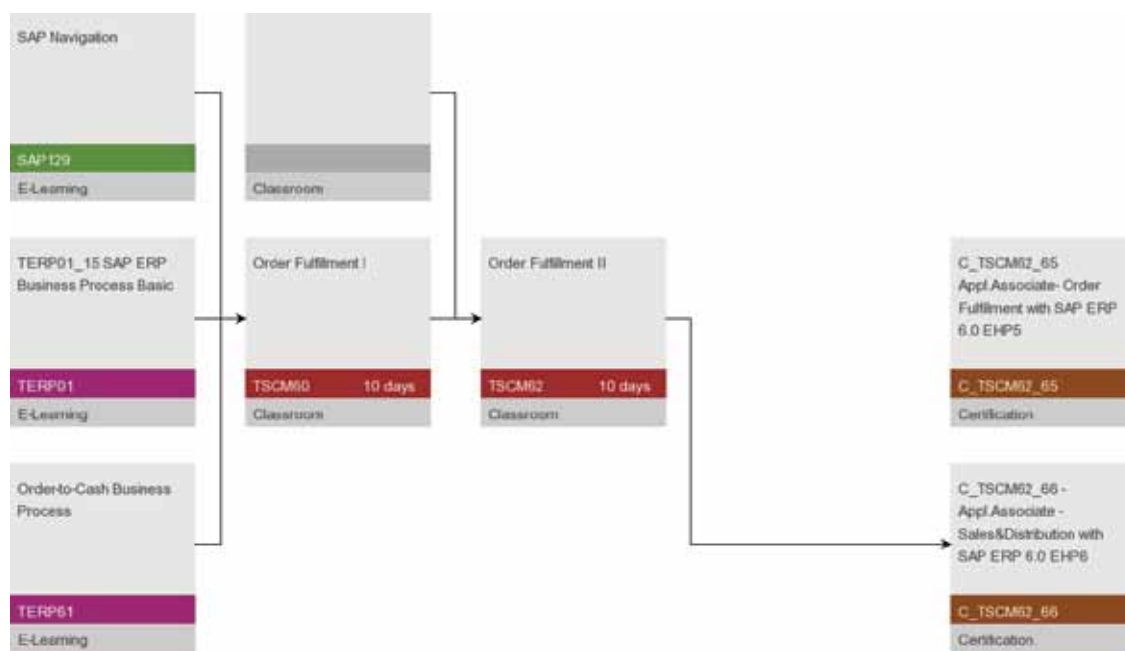
Content

- Goods receipts, goods issues, and transfer postings
- Reservations
- Special forms of inventory management
- Preparation and performance of a physical inventory
- Customizing settings for organizational levels, master data, purchasing, inventory management, physical inventory, and account determination
- Integrated case study for implementation of a fictitious demo company using specific business processes: configuration and mapping of the company structure, master data, and business processes in the SAP system
- Certification examination SAP Certified Application Associate - Procurement with SAP ERP 6.0 on the content of the courses TSCM50, TSCM52, SAP125, TERP01, TERP02, TERP41, SM001

Notes

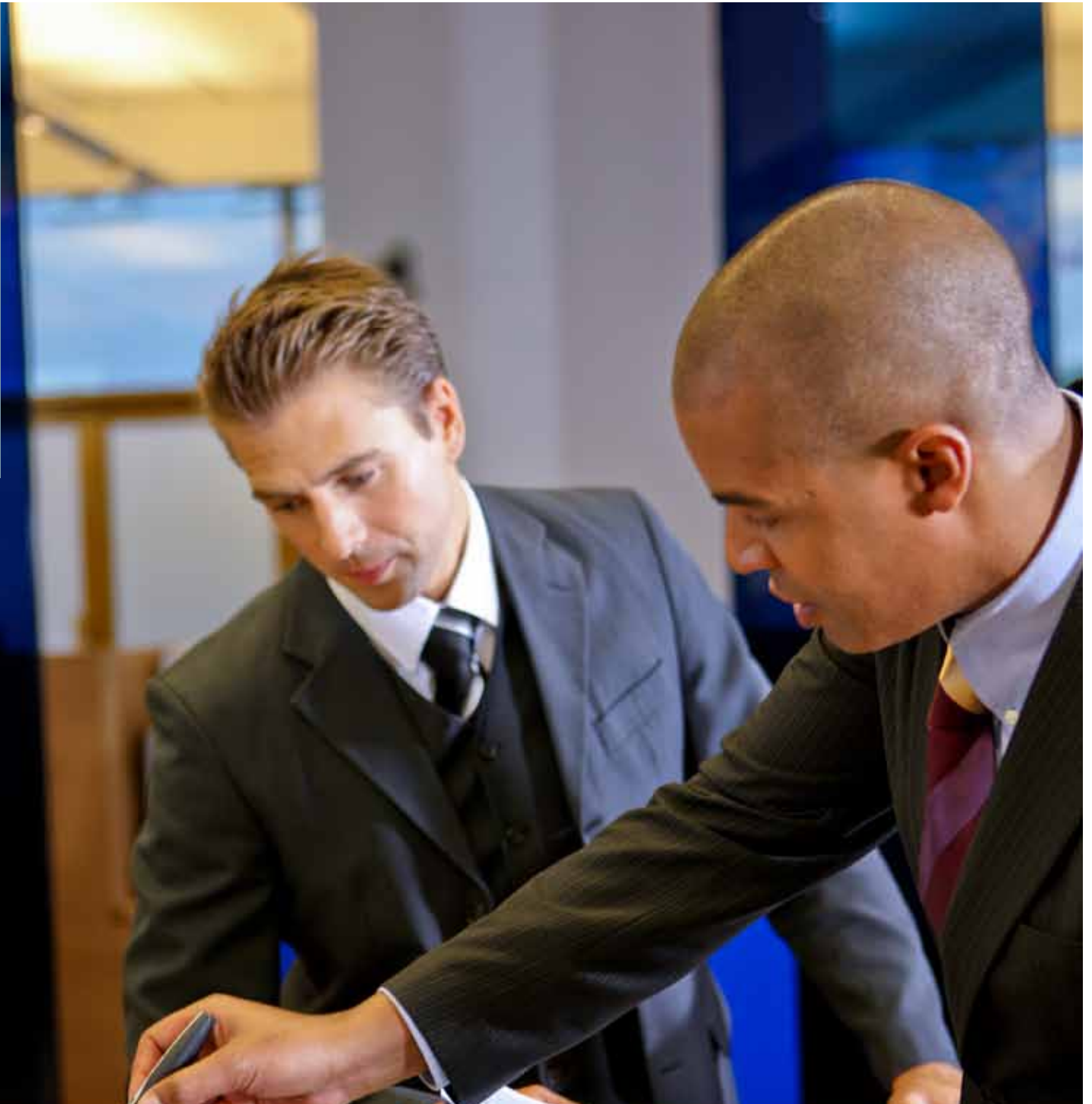
- To ensure that you retain the knowledge gained in this course and successfully complete the certification examination at the end of course TSCM52, we recommend that you consolidate the content in your own time after the course.

SCM (Order Fulfillment) – Sales & Distribution



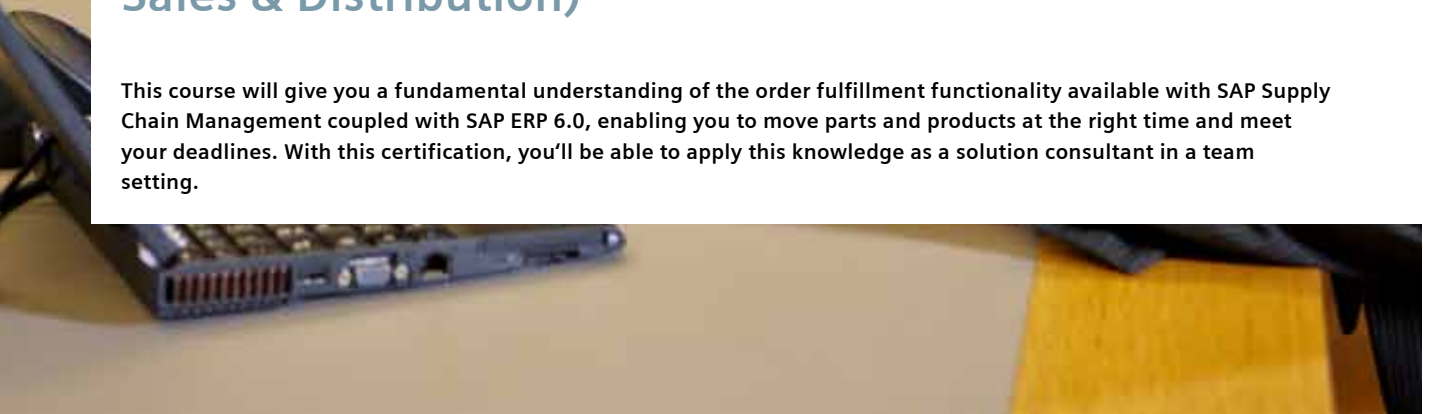
Curriculum Map Legend

| | |
|---|--|
| Overview | Essential |
| Foundation | Recommended |
| Detailed | 📢 Classroom Training |
| Delta Knowledge | 📖 Virtual Classroom Training |
| Consultant Academy | 💻 E-Learning |
| Under development | 📖 E-Learning (Online Knowledge Product) |
| Certification | |



SAP SCM – Order Fulfillment (formerly known as Sales & Distribution)

This course will give you a fundamental understanding of the order fulfillment functionality available with SAP Supply Chain Management coupled with SAP ERP 6.0, enabling you to move parts and products at the right time and meet your deadlines. With this certification, you'll be able to apply this knowledge as a solution consultant in a team setting.



SAP129 - SAP NAVIGATION

Duration: 2 hours

Delivery Type

- E-Learning

Audience

- Beginner users
- Project team members
- Project leaders
- Support personnel
- SAP consultants
- Technical consultants
- Sales
- Super users
- End users

Prerequisites:

Essential

- None

Recommended

- There are no required prerequisites for taking this course;
- however, it is recommended that learners have a basic knowledge of Windows.

Goals

- Familiarize with key terms
- Navigate within the SAP system.

Course Based on Software Release

- ERP ECC 6.0

Content

- The SAP Navigation course is designed to familiarize learners with key terms and how to navigate within the SAP system. You will be introduced to the key areas of SAP screens, fields, and features. You will also be introduced to ways in which you can obtain additional help, modify and customize the look of your SAP system, as well as apply more advanced skills.

Notes

- Course length: 2 hours



TERP01 - SAP ERP: INTRODUCTION

Duration: 240 Mins

Delivery Type

- E-Learning

Audience

- This course is appropriate for:
 - Customers and consultants who are new to the SAP ERP solution
 - Customers and consultants with expertise in a specific ERP business process area who want to expand their general knowledge of all business processes
 - IT professionals who will be supporting the business processes used by their organizations.
 - Project team members, who need an understanding of the key integration points between business disciplines supporting business process cycles.
 - Power/Super Users and End Users who want a better understanding of the total business process cycle.

Prerequisites:

Essential

- Conceptual or practical knowledge of how companies manage their businesses.

Recommended

- Basic knowledge in at least one SAP ERP application area

Goals

- At the end of this course you will be able to:
 - Identify the organizational levels used in SAP ERP
 - Explain the functions and structure of master data in supporting ERP business processes
 - Identify the various levels and types of reporting available in SAP ERP

Course Based on Software Release

- Presentations, demonstrations, and practice exercises were carried out using:
 - SAP ERP 6.0

Content

- Using recorded presentations, system demonstrations, practice simulations, quizzes, and assessments you will be introduced to:
 - SAP ERP organizational levels
 - Functions and structures of master data throughout SAP ERP
 - SAP ERP analytical and reporting solutions

Notes

- Course length: 1,5 hours
- This course introduces basic organizational levels and master data concepts used throughout SAP ERP. Detailed explanation of the organizational levels and master data used in the various ERP business processes is covered in the advanced courses associated with each process area.

TERP02 - SAP ERP: INTRODUCTION TO SAP NETWEAVER



Duration: 1 hour

Delivery Type

- E-Learning

Audience

- This course is appropriate for:
 - Customers and consultants who are new to the SAP ERP solution
 - Customers and consultants with expertise in a specific ERP business process area who want to expand their general knowledge of all business processes
 - IT professionals who will be supporting the business processes used by their organizations.
 - Project team members, who need an understanding of the key integration points between business disciplines supporting business process cycles.
 - Power/Super Users and End Users who want a better understanding of the total business process cycle.

Prerequisites:

Essential

- Conceptual or practical knowledge of how companies manage their businesses.

Recommended

- Basic knowledge in at least one SAP ERP application area

Goals

- At the end of this course you will be able to:
 - Identify the different components of SAP NetWeaver
 - Explain the business process functions each NetWeaver component supports.

Course Based on Software Release

- Presentations, demonstrations, and practice exercises were carried out using:
 - SAP ERP 6.0

Content

- Using recorded presentations, system demonstrations, practice simulations, quizzes, and assessments you will be introduced to:
 - How SAP NetWeaver supports business processes
 - The technical infrastructure components SAP NetWeaver

Notes

- This is not a technical course. This course provides an introduction to SAP NetWeaver and its components. To understand more about SAP NetWeaver from a technical perspective please see the various detailed training available under the NetWeaver curriculum.

- Course length: 1 hours



TERP61 - SAP ERP: INTRODUCTION TO PROCESSES IN SALES ORDER MANAGEMENT

Duration: 6 hour

Delivery Type

- E-Learning

Audience

- This course is appropriate for:
 - Customers and consultants who are new to the SAP ERP solution
 - Customers and consultants with expertise in a specific ERP business process area who want to expand their general knowledge of all business processes
 - IT professionals who will be supporting the business processes used by their organizations.
 - Project team members, who need an understanding of the key integration points between business disciplines supporting business process cycles.
 - Power/Super Users and End Users who want a better understanding of the total business process cycle.

Prerequisites:

Essential

- TERP01 SAP ERP: Introduction
- TERP02 SAP ERP: Introduction to SAP NetWeaver
- TERP11 SAP ERP: Introduction to NetWeaver Business Intelligence (BI)

Recommended

- TERP54 SAP ERP: Introduction into Processes in Lifecycle Data Management
- Basic knowledge in at least one SAP ERP application area

Goals

- At the end of this course you will be able to:
 - Identify Sales Order Management's organizational structure and master data
 - Describe the basic order to cash processes supported by Sap ERP
 - Identify the key integration points with other ERP processes
 - Describe the types of reports and analysis tools used in Sales Order Management

Course Based on Software Release

- Presentations, demonstrations, and practice exercises were carried out using:
 - SAP ERP 6.0

Content

- Using recorded presentations, system demonstrations, practice simulations, quizzes, and assessments you will be introduced to:
 - Sales Order Management's organizational structure and master data
 - ERP's order to cash processes
 - Key integration points with other ERP processes
 - Basic Sales Order Management report and analysis tools

Notes

▪ This course introduces SAP ERP's Sales Order Management processes. Detailed explanation of each business process, examination of alternative process steps and customizing is covered in the advanced courses available as part of the ERP Sales Order Management curriculum.

- Course length: 6 hours

SM001 - INTRODUCTION TO SAP SOLUTION MANAGER



Duration: 240 Mins

Delivery Type

- E-Learning

Audience

- Consultants
- Project Managers
- Project Team Leads
- Project Team Members
- IT Service Desk Managers
- IT Service Desk Members

Prerequisites:

Essential

- Basic knowledge of SAP systems

Recommended

- None

Goals

- Define the concept of the SAP Solution Manager
- Discuss the tools provided by the SAP Solution Manager

Course Based on Software Release

- Solution Manager 7.1

Content

- This course is meant to familiarize you with the principles and terminology of the SAP Solution Manager. You will be introduced to the benefits of using the SAP Solution Manager during the implementation of your SAP solutions and during ongoing support and operations.

Notes

- Course length: 2 hours



TSCM60 - ORDER FULFILLMENT I

Duration: 10 days

Delivery Type

- Instructor-led Classroom

Audience

- This course is aimed at Solution Consultants responsible for implementing order fulfillment with SAP ERP and SAP SCM.
- The course is also suitable for customers who are still using SAP R/3.

Prerequisites:

Essential

- Business knowledge in the area of sales and distribution processing.
- The following E-Learnings are included in posting TSCM60:
- SAP125 SAP Navigation
- TERPO1 Introduction into processes in ERP
- TERPO2 Introduction into processes in NetWeaver
- TERP61 SAP ERP: Introduction to Processes in Sales Order Management
- These E-Learnings have to be executed in self-study before the start of the course.

Recommended

- None

Goals

- Execute the main business procedures involved in sales and distribution processing.
- Implement the main functions and Customizing settings in sales and delivery processing.

Course Based on Software Release

- SAP ERP 6.0

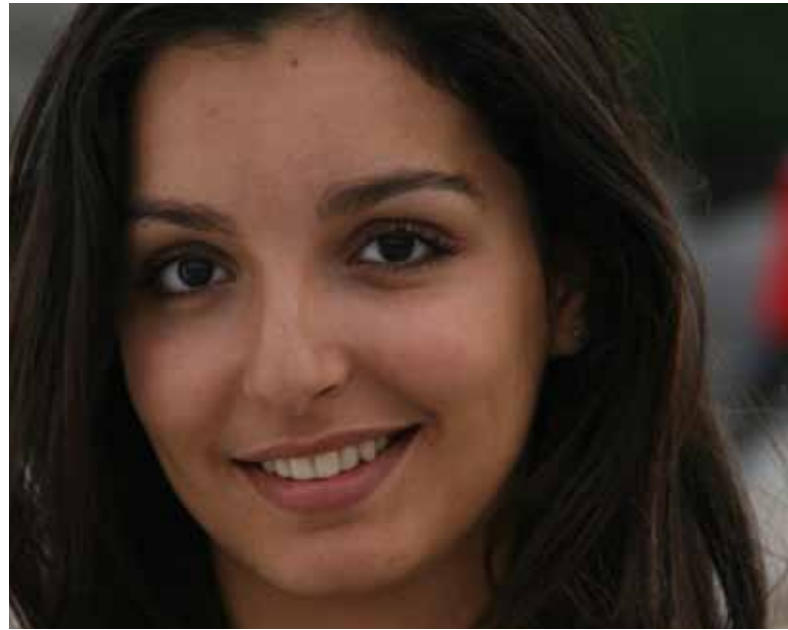
Content

- Processes in sales and distribution: organizational structures in sales and distribution, working with customer and material master data in sales and distribution, overview of the process chain for sales order processing, introduction to pricing in sales and distribution, introduction to the availability check, sales and distribution processing with make-to-order production, credit memo processing and returns processing, introduction to sales and distribution reporting.
- Sales: Creating and processing sales orders, sales document types, item categories, schedule line categories, document flow and copying control, partner determination, contracts and scheduling agreements, special business transactions, incompleteness logs, material determination, material listing/exclusion, product selection, free goods.
- Mini case study in sales.
- Delivery processes: Controlling outbound deliveries, creating and processing deliveries, picking, packaging, goods issue.

Notes

- Please do not enroll for this course unless you have fulfilled the prerequisites.
- To ensure that you retain the knowledge gained in this course and successfully complete the certification examination at the end of course TSCM62, we recommend that you consolidate the content in your own time after the course.

TSCM62 - ORDER FULFILLMENT II (INCL. CASE STUDY)



Duration: 10 days

Delivery Type

- Instructor-led Classroom

Audience

- This course is aimed at Solution Consultants responsible for implementing order fulfillment with SAP ERP and SAP SCM.
- The course is also suitable for customers who are still using SAP R/3.

Prerequisites:

Essential

- TSCM60 Order Fulfillment I
- * The following ELearning is included in posting TSCM62:
- SM001 Introduction to SAP Solution Manager
- (This ELearning had to be executed in self-study before the start of the course)

Recommended

- None

Goals

- Implement functions and make Customizing settings in pricing and billing.
- Use functions and Customizing settings in general sales and distribution processes such as output and text determination.
- Utilize your knowledge directly as a junior consultant in your first period of practice.

Course Based on Software Release

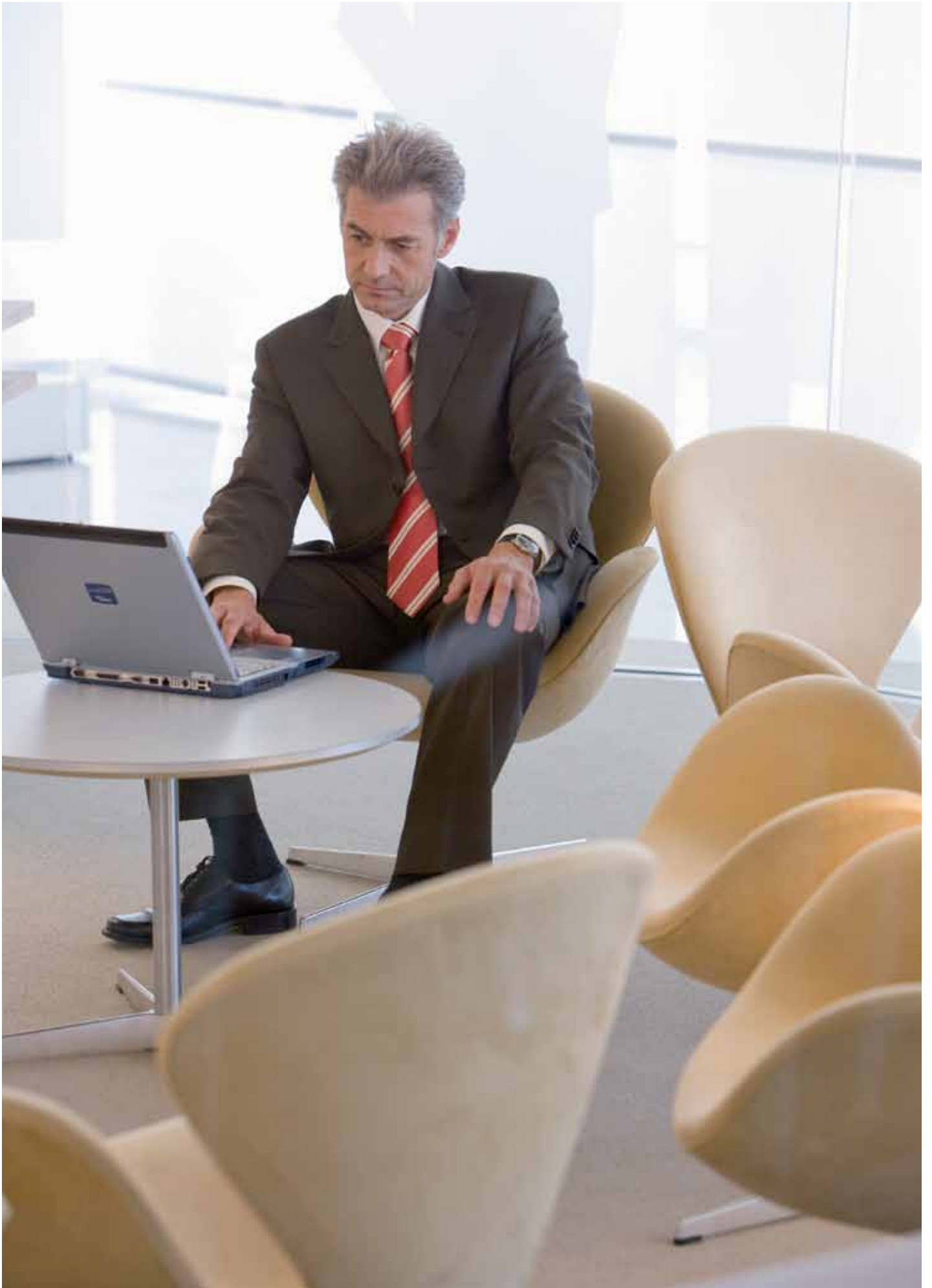
- SAP ERP 6.0

Content

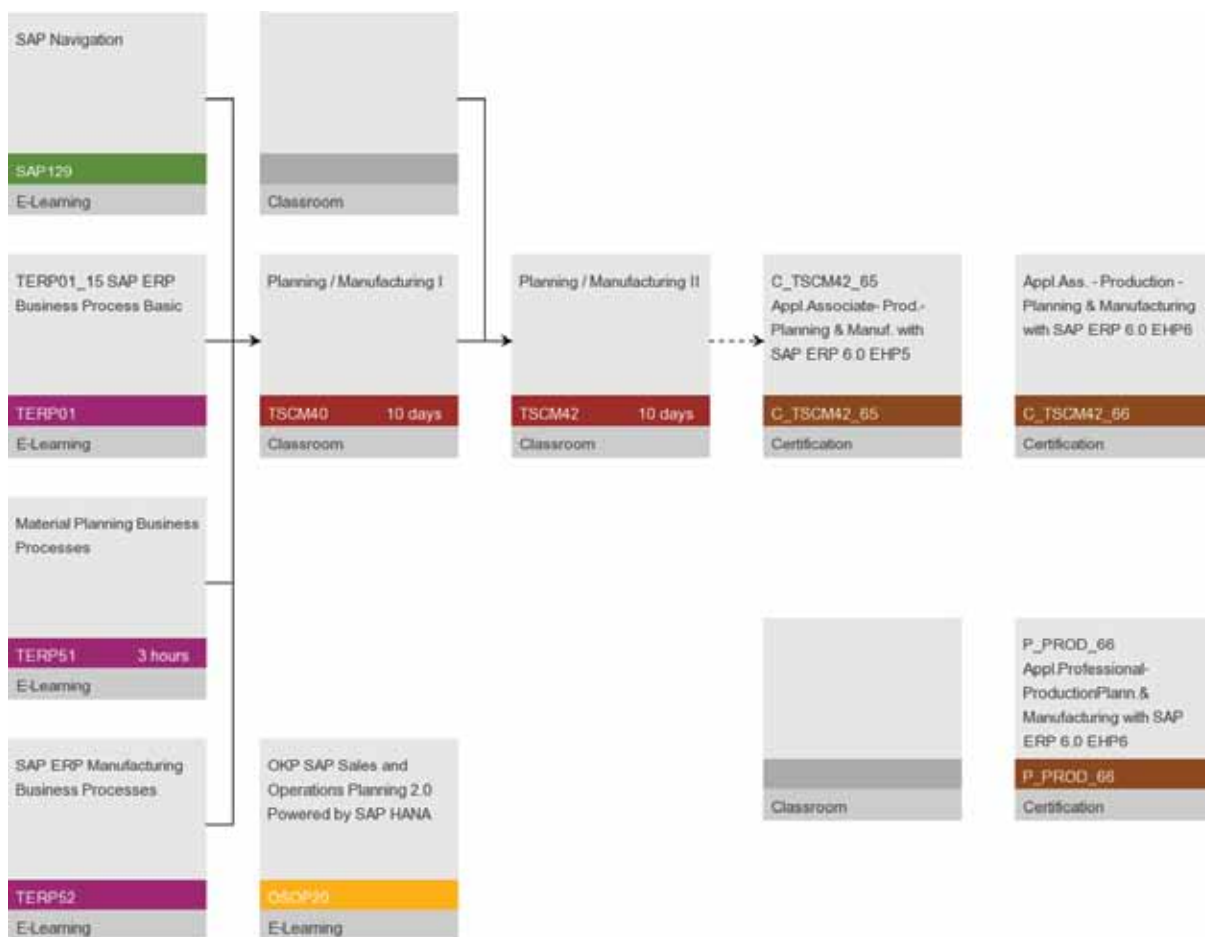
- Definition and maintenance of prices, surcharges, and discounts
- Setting up condition tables, access sequences, and condition types as part of pricing
- Using prices and other conditions in sales documents
- Promotions and sales deals
- Rebate processing
- Mini case study in pricing
- Controlling billing documents
- Creation forms and settlement forms for billing documents
- Billing plans and down payments
- Revenue account determination, business area account assignment, features of the SD-FI interface
- Message determination

Notes

- Please do not enroll for this course unless you have fulfilled the prerequisites.
- To ensure that you retain the knowledge gained in this course and successfully complete the certification examination at the end of the course, we recommend that you consolidate the content in your own time after the course.
- Text determination
- Integrated case study: implementation of a fictitious demo company using specific business processes, configuration and mapping of the company structure, master data, and business processes in the SAP system. Review and certification preparation
- Certification examination for SAP Certified Application Associate - Order Fulfillment with the content of the courses, SAP125, TERP01, TERP02, TERP61, TSCM60, SM001, TSCM62



SAP SCM (PLANNING & MANUFACTURING)- PRODUCTION PLANNING



Curriculum Map Legend

| | |
|--------------------|---|
| Overview | — Essential |
| Foundation | -- Recommended |
| Detailed | 🏠 Classroom Training |
| Delta Knowledge | 🖥️ Virtual Classroom Training |
| Consultant Academy | 💻 E-Learning |
| Under development | 📖 E-Learning (Online Knowledge Product) |
| Certification | |

SAP SCM – Production Planning/ Manufacturing

SAP ERP uses material requirements planning techniques to create unconstrained production plans in the form of production orders or planned orders. Training for this curriculum demonstrates how you can use production planning functionality to improve efficiency and customer service, increase revenue, lower working capital, and reduce operating costs. With courses in manufacturing you'll learn about the tools you can use to optimize your end-to-end manufacturing execution processes. You'll benefit from a thorough understanding of how to plan material requirements and adequately assess capacity and delivery constraints. Plus, you'll see how you can streamline processes such as shop floor control, make-to-order production, mass production, and process manufacturing. As a result, you'll be empowered to move through order to delivery with accuracy and efficiency.



SAP129 - SAP NAVIGATION



Duration: 2 hours

Delivery Type

- E-Learning

Audience

- Beginner users
- Project team members
- Project leaders
- Support personnel
- SAP consultants
- Technical consultants
- Sales
- Super users
- End users

Prerequisites:

Essential

- None

Recommended

- There are no required prerequisites for taking this course;
- however, it is recommended that learners have a basic knowledge of Windows.

Goals

- Familiarize with key terms
- Navigate within the SAP system.

Course Based on Software Release

- ERP ECC 6.0

Content

- The SAP Navigation course is designed to familiarize learners with key terms and how to navigate within the SAP system. You will be introduced to the key areas of SAP screens, fields, and features. You will also be introduced to ways in which you can obtain additional help, modify and customize the look of your SAP system, as well as apply more advanced skills.

Notes

- Course length: 2 hours



TERP01 - SAP ERP: INTRODUCTION

Duration: 90 Mins

Delivery Type

- E-Learning

Audience

- This course is appropriate for:
 - Customers and consultants who are new to the SAP ERP solution
 - Customers and consultants with expertise in a specific ERP business process area who want to expand their general knowledge of all business processes
 - IT professionals who will be supporting the business processes used by their organizations.
 - Project team members, who need an understanding of the key integration points between business disciplines supporting business process cycles.
 - Power/Super Users and End Users who want a better understanding of the total business process cycle.

Prerequisites:

Essential

- Conceptual or practical knowledge of how companies manage their businesses.

Recommended

- Basic knowledge in at least one SAP ERP application area

Goals

- At the end of this course you will be able to:
 - Identify the organizational levels used in SAP ERP
 - Explain the functions and structure of master data in supporting ERP business processes
 - Identify the various levels and types of reporting available in SAP ERP

Course Based on Software Release

- Presentations, demonstrations, and practice exercises were carried out using:
 - SAP ERP 6.0

Content

- Using recorded presentations, system demonstrations, practice simulations, quizzes, and assessments you will be introduced to:
 - SAP ERP organizational levels
 - Functions and structures of master data throughout SAP ERP
 - SAP ERP analytical and reporting solutions

Notes

- Course length: 1,5 hours
- This course introduces basic organizational levels and master data concepts used throughout SAP ERP. Detailed explanation of the organizational levels and master data used in the various ERP business processes is covered in the advanced courses associated with each process area.

TERP02 - SAP ERP: INTRODUCTION TO SAP NETWEAVER



Duration: 1 hour

Delivery Type

- E-Learning

Audience

- This course is appropriate for:
 - Customers and consultants who are new to the SAP ERP solution
 - Customers and consultants with expertise in a specific ERP business process area who want to expand their general knowledge of all business processes
 - IT professionals who will be supporting the business processes used by their organizations.
 - Project team members, who need an understanding of the key integration points between business disciplines supporting business process cycles.
 - Power/Super Users and End Users who want a better understanding of the total business process cycle.

Prerequisites:

Essential

- Conceptual or practical knowledge of how companies manage their businesses.

Recommended

- Basic knowledge in at least one SAP ERP application area

Goals

- At the end of this course you will be able to:
 - Identify the different components of SAP NetWeaver
 - Explain the business process functions each NetWeaver component supports.

Course Based on Software Release

- Presentations, demonstrations, and practice exercises were carried out using:
 - SAP ERP 6.0

Content

- Using recorded presentations, system demonstrations, practice simulations, quizzes, and assessments you will be introduced to:
 - How SAP NetWeaver supports business processes
 - The technical infrastructure components SAP NetWeaver

Notes

▪ This is not a technical course. This course provides an introduction to SAP NetWeaver and its components. To understand more about SAP NetWeaver from a technical perspective please see the various detailed training available under the NetWeaver curriculum.

- Course length: 1 hours



TERP51 - SAP ERP: INTRODUCTION TO PROCESSES IN MATERIAL PLANNING

Duration: 3 hours

Delivery Type

- E-Learning

Audience

- This course is appropriate for:
 - Customers and consultants who are new to the SAP ERP solution
 - Customers and consultants with expertise in a specific ERP business process area who want to expand their general knowledge of all business processes
 - IT professionals who will be supporting the business processes used by their organizations.
 - Project team members, who need an understanding of the key integration points between business disciplines supporting business process cycles.
 - Power/Super Users and End Users who want a better understanding of the total business process cycle.

Prerequisites:

Essential

- TERP01 SAP ERP: Introduction
- TERP02 SAP ERP: Introduction to SAP NetWeaver
- TERP11 SAP ERP: Introduction to NetWeaver Business Intelligence (BI)

Recommended

- TERP41 SAP ERP: Introduction to Processes in Procurement
- TERP42 SAP ERP: Introduction to Processes in Inventory & Warehouse Management
- TERP52 SAP ERP: Introduction into Processes in Manufacturing Execution
- Basic knowledge in at least one SAP ERP application area

Goals

- At the end of this course you will be able to:
 - Identify the organizational levels and master data used by Material Planning
 - Explain the importance of planning strategies on business processes
 - Explain the differences between Material Requirements Planning (MRP) and Consumption-Based Planning
 - Describe the steps in the material planning process
 - Identify the key integration points with other ERP processes

Course Based on Software Release

- Presentations, demonstrations, and practice exercises were carried out using:
 - SAP ERP 6.0

Notes

- This course introduces SAP ERP's material planning processes. Detailed explanation of each business process, examination of alternative process steps and customizing is covered in the advanced courses available as part of the ERP Material Planning curriculum.
- Course length: 3 hours

Content

- Using recorded presentations, system demonstrations, practice simulations, quizzes, and assessments you will be introduced to:
 - Organizational levels and master data used in Material Planning
 - Planning strategies and their importance to planning processes
 - Difference between Materials Requirement Planning (MRP) and Consumption-based Planning
 - Key integration points with Inventory Management, Sales Order Management, and Manufacturing Execution

TERP52 - SAP ERP: INTRODUCTION TO PROCESSES IN MANUFACTURING EXECUTION



Duration: 3 hours

Delivery Type

- E-Learning

Audience

- Customers and consultants who are new to the SAP ERP solution
- Customers and consultants with expertise in a specific ERP business process area who want to expand their general knowledge of all business processes
- IT professionals who will be supporting the business processes used by their organizations.
- Project team members, who need an understanding of the key integration points between business disciplines supporting business process cycles.
- Power/Super Users and End Users who want a better understanding of the total business process cycle.

Prerequisites:

Essential

- TERP01 SAP ERP: Introduction
- TERP02 SAP ERP: Introduction to SAP NetWeaver
- TERP11 SAP ERP: Introduction to NetWeaver Business Intelligence (BI)

Recommended

- TERP51 SAP ERP: Introduction to Processes in Material Planning
- TERP54 SAP ERP: Introduction into Processes in Lifecycle Data Management
- Basic knowledge in at least one SAP ERP application area

Goals

At the end of this course you will be able to:

- Explain the differences between discrete, repetitive, and process manufacturing execution processes
- Identify the organizational levels and master data used in manufacturing execution
- Describe the basic manufacturing execution process steps
- Identify key integration points with other ERP processes
- Discuss the basic activity and performance reporting available

Course Based on Software Release

- Presentations, demonstrations, and practice exercises were carried out using:
- SAP ERP 6.0

Notes

- This course introduces SAP ERP's manufacturing execution processes. Detailed explanation of each business process, examination of alternative process steps and customizing is covered in the advanced courses available as part of the ERP Manufacturing curriculum.

- Course Length: 3 hours

Content

- Using recorded presentations, system demonstrations, practice simulations, quizzes, and assessments you will be introduced to:
 - Differences between discrete, repetitive, and process manufacturing
 - Organizational levels and master data used in Manufacturing Execution
 - Manufacturing execution process
 - Integration points with other ERP processes
 - Basic activity and performance reporting available



SM001 - INTRODUCTION TO SAP SOLUTION MANAGER

Duration: 240 Mins

Delivery Type

- E-Learning

Audience

- Consultants
- Project Managers
- Project Team Leads
- Project Team Members
- IT Service Desk Managers
- IT Service Desk Members

Prerequisites:

Essential

- Basic knowledge of SAP systems

Recommended

- None

Goals

- Define the concept of the SAP Solution Manager
- Discuss the tools provided by the SAP Solution Manager

Course Based on Software Release

- Solution Manager 7.1

Content

- This course is meant to familiarize you with the principles and terminology of the SAP Solution Manager. You will be introduced to the benefits of using the SAP Solution Manager during the implementation of your SAP solutions and during ongoing support and operations.

Notes

- Course length: 2 hours

TSCM40 - PLANNING/ MANUFACTURING I



Duration: 10 days

Delivery Type

- Instructor-led Classroom

Audience

- Project team members and consultants from SAP partners responsible for implementing Supply Chain Planning & Manufacturing with SAP ERP Central Component (ECC)
- Partners interested in preparation for certification examination

Prerequisites:

Essential

- Business knowledge in the area of planning and manufacturing
- The following are included in posting TSCM40:
- SAP125 SAP Navigation
- TERP02 SAP ERP: Introduction to SAP NetWeaver
- TERP51 SAP ERP: Introduction to Processes in Material Planning
- TERP52 SAP ERP: Introduction to Processes in Manuf.Execution
- which you must study in your own time before the start of TSCM40

Recommended

- None

Goals

- Apply and communicate master data in the area of planning and manufacturing
- Apply and describe applications for production planning
- Utilize your knowledge directly as a junior consultant in your first period of practice

Course Based on Software Release

- SAP ERP Central Component 6.0 (ECC),

Content

- Creating and managing master data: material master, BOM, classes, characteristics, documents, overview of variant configuration, work center, routing, production resources, changes with and without history, mass change
- ERP production planning: production program planning, planning-based MRP, planning strategies for make-to-stock and make-to-order production, implementing requirements planning, processing of MRP results, additional MRP processes

Notes

- Please do not enroll for this course unless you have fulfilled the prerequisites.
- To ensure that you retain the knowledge gained in this course and successfully complete the certification examination at the end of course TSCM42, we recommend that you consolidate the content in your own time after the course.



TSCM42 - PLANNING/ MANUFACTURING II (INCL. CASE STUDY)

Duration: 10 days

Delivery Type

- Instructor-led Classroom

Audience

- This course is aimed at project team members and People with consultants responsible for implementing Supply Chain Planning & Manufacturing with SAP ERP Central Component (ECC) and SCM.
- The course is also suitable for customers who are still using SAP R/3.

Prerequisites:

Essential

- Business knowledge in the area of planning and manufacturing
- TSCM40 Planning / Manufacturing I
- The following are included in posting TSCM42:
- SM001 Introduction to SAP Solution Manager
- (which you must study in your own time before the start of course TSCM40)

Recommended

- None

Goals

- Utilize and describe basic functions for managing production orders (PP-SFC), repetitive manufacturing (PP-REM), process orders (PP-PI) and KANBAN (PP-KAN) as further options in production management
- Utilize your knowledge directly as a junior consultant in your first period of practice

Course Based on Software Release

- SAP ERP Central Component 6.0 (ECC),

Content

- Order-controlled production with production orders: Overview of order categories and types, order structure/processing run, order creation/changing orders, interface with planning, order release (status management, availability checks), printing order documents, material staging and withdrawal, process integration (interfaces) and order control, confirmations, goods receipt, order settlement, archiving and deletion, information systems (overview), automation (mass processing, collection orders (multilevel order management))
- Overview of production with process orders, repetitive manufacturing, KANBAN and capacity planning
- Integrated case study: implementation of a fictitious demo company using specific business processes, configuration and mapping of the company structure, master data, and business processes in the SAP system ECC.
- Review and certification preparation
- Certification examination for Solution Consultant SCM - Planning/Manufacturing with the content of the courses SAP125, ERP001, TSCM40, SM001, TSCM42

Notes

- Please do not enroll for this course unless you have fulfilled the prerequisites.
- To ensure that you retain the knowledge gained in this course and successfully complete the certification examination at the end of course TSCM42, we recommend that you consolidate the content in your own time after the course.
- The system SAP ECC contains the new functions of ECC 6.0
- SM100 is only available in English language

Product Lifecycle Management

PLANT MAINTENANCE



Curriculum Map Legend

| | |
|--------------------|---|
| Overview | — Essential |
| Foundation | -- Recommended |
| Detailed | 🏠 Classroom Training |
| Delta Knowledge | 🖥️ Virtual Classroom Training |
| Consultant Academy | 💻 E-Learning |
| Under development | 📄 E-Learning (Online Knowledge Product) |
| Certification | |



SAP01E – SAP OVERVIEW



Duration: 720 Mins

Delivery Type

- E - Learning

Audience

- All persons interested in getting an overview of SAP's Business Suite solutions.

Prerequisites:

Essential

- Working knowledge of Microsoft office and Internet browsers

Recommended

- Basic knowledge of operational business processes

Goals

- Identify SAP Applications and Components
- Explain basic functionality of SAP Solutions
- Attend more detailed SAP courses and have the required baseline knowledge

Course Based on Software Release

- ERP ECC 6.0

Content

- SAP a Cloud Company
- SAP System Navigation
- System-Wide Concepts
- Logistics
- Financials
- Human Capital Management (HCM)
- Analytics and Strategic Planning
- SAP Services



PLM300 - BUSINESS PROCESSES IN PLANT MAINTENANCE

Duration: 5 days

Delivery Type

- Instructor-led Classroom

Audience

- Business Process Owner / Team Lead / Power User
- Industry Specialist
- Program / Project Manager

Prerequisites:

Essential

- SAP Navigation 129

Recommended

- SAP 01 Or SAP 01E

Goals

- SAP training course PLM305 explains in detail the structure of object and asset structures in the Enterprise Asset Management area, which form the backbone for processing maintenance and service measures.
- All of the necessary customizing settings are also shown.

Course Based on Software Release

- ERP ECC 6.0

Content

- Plant Maintenance Organization
- Technical Objects
- Breakdown Maintenance
- Corrective Maintenance
- Refurbishment of Spare Parts
- Preventive Maintenance
- Project-Oriented Maintenance
- Supplementary Processes for SAP Enterprise Asset Management
- Report and Analysis of Information for SAP Enterprise Asset Management (EAM)
- SAP Enterprise Asset Management Customizing Implementation

PLM305 - MANAGING TECHNICAL OBJECTS



Duration: 3 days

Delivery Type

- Instructor-led Classroom

Audience

- Business Process Owner / Team Lead / Power User
- Application Consultant
- Project Manager

Prerequisites:

Essential

- PLM300 Business Processes in Plant Maintenance

Recommended

- SAP 01 Or SAP 01E

Goals

- SAP training course PLM305 explains in detail the structure of object and asset structures in the Enterprise Asset Management area, which form the backbone for processing maintenance and service measures.
- All of the necessary customizing settings are also shown..

Course Based on Software Release

- ERP ECC 6.0

Content

- Functional locations (further functions)
- Linear Asset Management
- Equipment
- Bills of Material (BOM)
- Measuring Points and Counters
- Vehicles and Pool Asset Management

Notes

- The Enterprise Asset Management area within the SAP ERP solution is a further development of the R/3 Plant Maintenance (PM) component.
- However, customers with R/3 Releases 4.6C and Enterprise 4.7 can participate in Enterprise Asset Management courses of releases SAP ERP without any problems.



PLM310 - MAINTENANCE AND SERVICE PROCESSING: PREVENTATIVE

Duration: 3 days

Delivery Type

- Instructor-led Classroom

Audience

- Application Consultant
- Project Manager

Prerequisites:

Essential

- PLM300 Business Processes in Plant Maintenance

Recommended

- None

Goals

- This training course provides a detailed overview of the business processes involved in preventative maintenance and service processing.
- It focuses on time-based and performance-based maintenance planning in the area of Enterprise Asset Management.
- Participants also learn about specific areas such as the integration between Plant Maintenance and Quality Management, or the procurement of services based on the maintenance plan.

Course Based on Software Release

- ERP ECC 6.0

Content

- Management of Task Lists Routing management
- Single Cycle Maintenance Planning
- Maintenance planning with a strategy – time-based
- Maintenance planning with a strategy – performance-based
- Maintenance planning with cycles of a different dimension
- Supplementary Processes for Preventive Maintenance and Service

PLM315 - MAINTENANCE PROCESSING: OPERATIONAL FUNCTIONS



Duration: 3 days

Delivery Type

- Instructor-led Classroom

Audience

- Project manager
- Project team

Prerequisites:

Essential

- PLM300 Business Processes in Plant Maintenance

Recommended

- None

Goals

- This training course shows the different phases of maintenance processing and provides participants with the necessary Customizing settings for each phase of the process.
- It also deals with specific application functions in the area of Enterprise Asset Management.

Course Based on Software Release

- SAP ERP 6.0

Content

- Notification (notification types, catalogs, catalog profiles)
- Planning (order type, work center, costing)
- Scheduling
- Completion



PLM318 - ANALYTICS IN ENTERPRISE ASSET MANAGEMENT

Duration: 2 days

Delivery Type

- Instructor-led Classroom

Audience

- Application Consultant
- Project Manager

Prerequisites:

Essential

- PLM300 Business Processes in Plant Maintenance

Recommended

- None

Goals

- This course demonstrates how source data is aggregated from different business processes in Enterprise Asset Management and prepared for reports and analyses
- Participants learn about the uses of different, Plant Maintenance- based queries in the Business Information Warehouse (BW).
- The course also explains how to plan budgets in the Plant Maintenance area using the planning function in BW (BW-BPS).

Course Based on Software Release

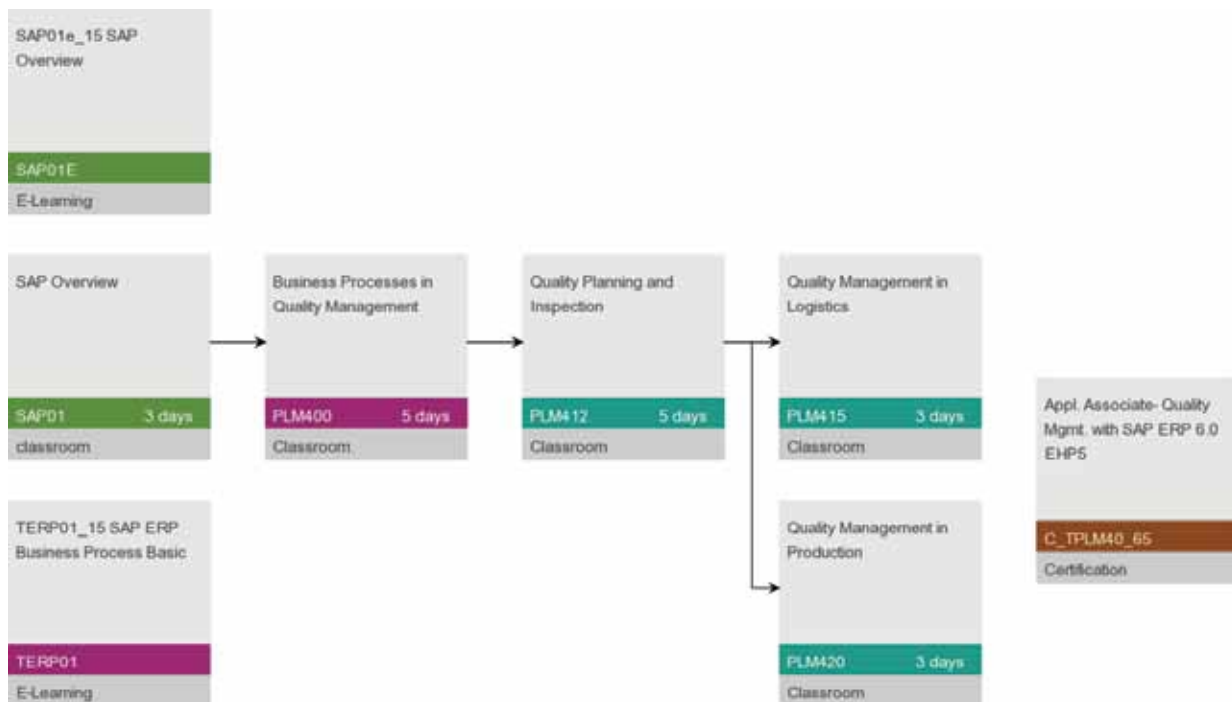
- ERP ECC 6.0

Content

- Source data
- Data Storage in Business Information Warehouse
- Enterprise Asset Management
- Budget Planning



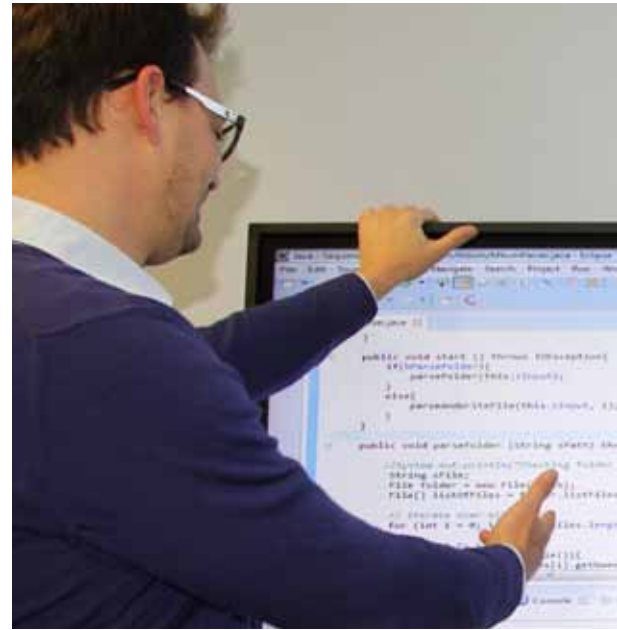
SAP QUALITY MANAGEMENT



Curriculum Map Legend

| | |
|--------------------|---|
| Overview | — Essential |
| Foundation | -- Recommended |
| Detailed | 📺 Classroom Training |
| Delta Knowledge | 🖥️ Virtual Classroom Training |
| Consultant Academy | 💻 E-Learning |
| Under development | 📄 E-Learning (Online Knowledge Product) |
| Certification | |

SAP01 – SAP OVERVIEW



Duration: 3 days

Delivery Type

- Instructor-led Classroom

Audience

- All persons interested in getting an overview of SAP's Business Suite solutions.

Prerequisites:

Essential

- Working knowledge of Microsoft office and Internet browsers

Recommended

- Basic knowledge of operational business processes

Goals

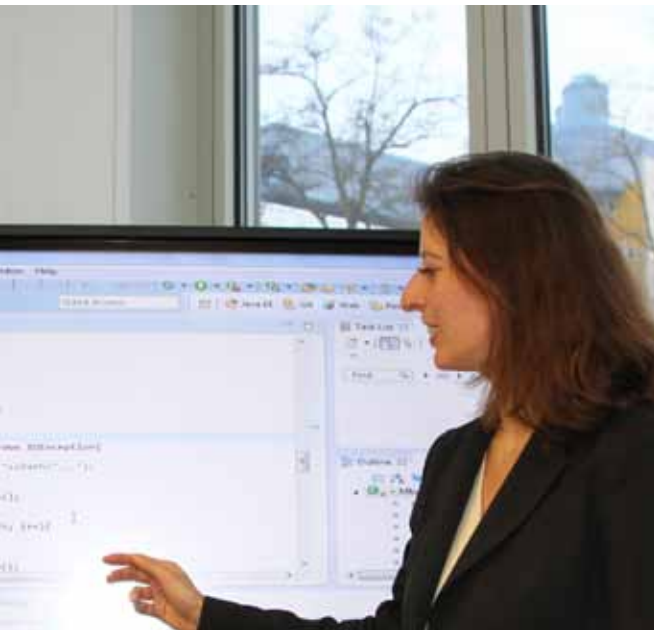
- Identify SAP Applications and Components
- Explain basic functionality of SAP Solutions
- Attend more detailed SAP courses and have the required baseline knowledge

Course Based on Software Release

- ERP ECC 6.0

Content

- SAP a Cloud Company
- SAP System Navigation
- System-Wide Concepts
- Logistics
- Financials
- Human Capital Management (HCM)
- Analytics and Strategic Planning
- SAP Services



PLM400 - BUSINESS PROCESSES IN QUALITY MANAGEMENT

Duration: 5 days

Delivery Type

- Instructor-led Classroom

Audience

- Project manager and project team members.
- Persons responsible for quality management tasks.

Prerequisites:

Essential

- None

Recommended

- SAP01 SAP Overview

Goals

- This training course provides an overview of the uses of Quality Management. It introduces the basic business processes involved in Quality Management, as well as how these are mapped in the SAP system.
- Furthermore, it demonstrates the most important aspects of integration with other SAP applications.

Course Based on Software Release

- ERP ECC 6.0

Content

- Integration of Quality Management in the supply chain process- related overview
- QM in procurement and sales
- QM in production
- Insight into QM functions:
 - Quality Planning
 - Quality Inspection
 - Quality Certificate
 - Quality Notification
 - Quality Control
 - Audit Management
 - Test Equipment Management
 - Stability Study
- Potential for introducing Quality Management in companies

Notes

- This training course is an essential prerequisite for the following detailed training courses in the area of Quality Management.
- Customers with R/3 Releases 4.6C and Enterprise 4.7 can participate in Quality Management courses of release SAP ERP 6.0 without any problems.

PLM412 - QUALITY PLANNING AND INSPECTION



Duration: 5 days

Delivery Type

- Instructor-led Classroom

Audience

- Project team members, persons from the user department.
- Persons responsible for quality management tasks.

Prerequisites:

Essential

- PLM400 Business Processes in Quality Management.

Recommended

- SAP01 SAP Overview

Goals

- This • Participants learn how to process QM-specific basic data as well as inspection planning details. They also learn how basic data is used in different plans and see how this data influences the generated inspection lots. The general inspection process is modeled using various examples.
- It also•In addition, the training course demonstrates the possible uses of quality notifications and explains the different evaluation and reporting options in Quality Management.

Course Based on Software Release

- ERP ECC 6.0

Content

- Managing QM-specific basic data Sampling procedures, dynamic modification rules, master inspection characteristics, inspection methods, catalogs, coding.
- Inspection planning Material specification, inspection plans, engineering workbench, engineering change management.
- Quality inspection process Inspection lot processing, notification processing, defects recording, results recording, usage decision.
- Quality notification and SAP Business Workflow
- Evaluation methods in QM Reports and analyses based on inspection lots, inspection results, and notification.

Notes

- This training course concentrates fundamentally on the inspection lot processing procedures within Quality Management. Advantages and special features of the integration with the supply chain form part of the subsequent training courses.
- Besides the application this training covers also customizing.
- Customers with R/3 Releases 4.6C and Enterprise 4.7 can participate in Quality Management courses of release SAP ERP 6.0 without any problems.



PLM415 - QUALITY MANAGEMENT IN LOGISTICS

Duration: 3 days

Delivery Type

- Instructor-led Classroom

Audience

- Project team members, persons from the user department.
- Persons responsible for quality management tasks.

Prerequisites:

Essential

- PLM412 Quality Planning and Inspection.

Recommended

- SCM500 Business Processes in Procurement.

Goals

- Participants learn about the integration of Quality Management into the processes of procurement, inventory management and sales processes.
- In particular, they learn which of the QM functions in the procurement process are also linked to the sales processes

Course Based on Software Release

- ERP ECC 6.0

Content

- Inventory management with QM, inspection stock, and inspection lot
- Goods receipt and goods issue inspection
- Inspections of goods movements
- Control of the procurement process
 - Vendor release, model processing
 - Vendor's QM system
- Procurement documents and certificates
- Planning and creating quality certificates for outbound deliveries.

Notes

- The training concentrates on the integration of quality management with processes in purchasing, materials management, and sales and distribution. The training also covers Customizing as well as the application itself.
- Specific subjects about QM processes in procurement and sales & distribution, as well as about processing certificates, are offered using VLCs. The current offer is available on the Internet at <https://training.sap.com/shop>
- Customers with R/3 Releases 4.6C and Enterprise 4.7 can participate in Quality Management courses below releases SAP ERP 6.0 without problem.

PLM420 - QUALITY MANAGEMENT IN PRODUCTION



Duration: 3 days

Delivery Type

- Instructor-led Classroom

Audience

- Project team members, persons from the user department.
- Persons responsible for quality management tasks.

Prerequisites:

Essential

- PLM412 Quality Planning and Inspection.

Recommended

- SCM500 Business Processes in Procurement.

Goals

- Participants receive an introduction into the field of quality management in production, the integration of inspection operations into work scheduling, takt-based inspection, and the creation of partial lots.
- Participants obtain an overview of the possible uses of statistical process control (SPC).
- Participants are familiarized with the functions for test equipment management

Course Based on Software Release

- ERP ECC 6.0

Content

- Integration of quality management into manufacturing processes
- Inspection point processing based on times or quantities
- Use of SPC techniques
- Inspection processing for repetitive manufacturing and external processing
- Partial lot processing and incoming inspection from manufacturing
- Test equipment management and integration with Enterprise Asset Management.

Notes

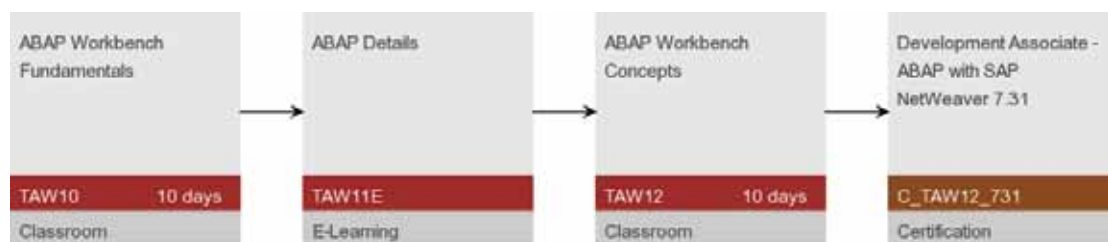
- The course contents concentrate on the integration of quality management with processes in manufacturing. The training also covers Customizing as well as the application itself.
- Special topics about quality management processes in the process industry are offered as remote classroom training (VLC). The current offering is available on the Internet at <http://www.sap.com/education>
- Quality management courses for SAP ERP releases are also suitable for customers with SAP R/3 releases 4.6C and Enterprise 4.7

Technical Module



SAP PROGRAMMING ABAP

ABAP WITH SAP NETWEAVER 7.0

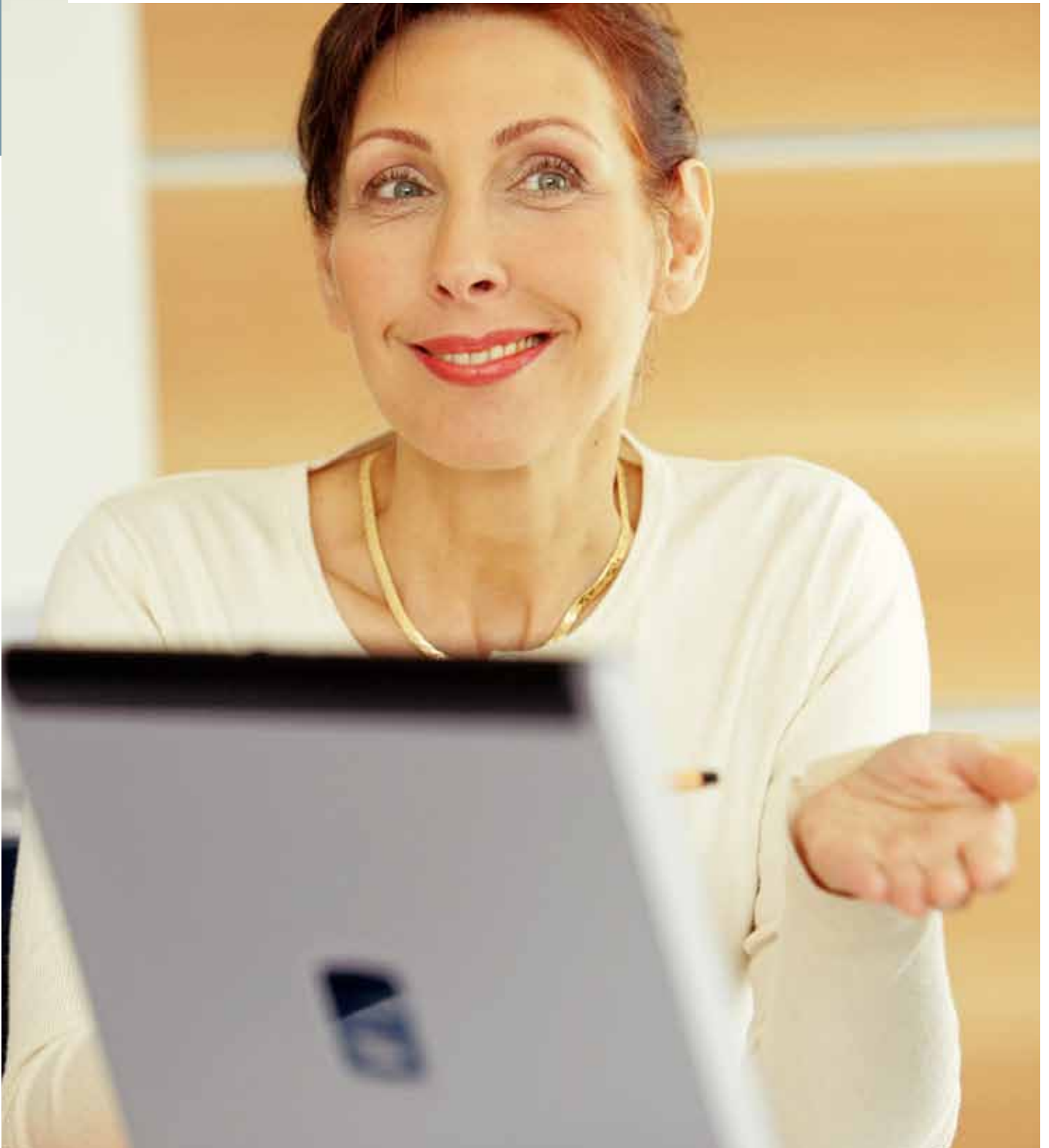


Curriculum Map Legend

| | |
|--------------------|---------------------------------------|
| Overview | Essential |
| Foundation | Recommended |
| Detailed | Classroom Training |
| Delta Knowledge | Virtual Classroom Training |
| Consultant Academy | E-Learning |
| Under development | E-Learning (Online Knowledge Product) |
| Certification | |

Programming ABAP

Developers, consultants, and project managers working in ABAP, the SAP programming language, should consider the Web application development curriculum. You'll benefit from a full range of Web application development topics, including a broad overview and basic foundation, features and functionality, management and reporting, and advanced programming. As a result, you'll be able to take a comprehensive approach to meeting your company's specific needs. This curriculum also qualifies you for SAP Web application development certification



TAW10 - ABAP BASICS



Duration: 10 days

Delivery Type

- Instructor-led Classroom

Audience

- Development consultants who are responsible for developing and adapting ABAP programs

Prerequisites:

Essential

- Programming experience in another programming language

Recommended

- None

Goals

- Work with the ABAP Workbench tools
- Write simple ABAP programs

Course Based on Software Release

- SAP NetWeaver 7.0

Content

- Introduction to SAP NetWeaver Application Server
- ABAP Workbench
- ABAP programming basics: fundamental syntax elements, user dialogs, function modules, program calls, and data transfer
- ABAP Dictionary: creating global types (tables, views) and search helps
- Open SQL
- Programming classical screens (dynpros): screen elements, flow logic, user interface

Notes

- In order to be properly prepared for the certification exam after TAW12, participants might need some extra hours of self-study after the official end of the class every day



TAW11E - ABAP DETAILS

Duration: 20 Hours

Delivery Type

- E-Learning

Audience

- Development consultants who are responsible for developing and adapting ABAP programs

Prerequisites:

Essential

- TAW10 ABAP Basics

Recommended

- None

Goals

- Program reports with ALV Grid Control
- Program database updates
- Describe ABAP types in depth
- Name Unicode aspects relevant for ABAP programs

Course Based on Software Release

- SAP NetWeaver 7.0

Content

- ALV Grid Control
- ABAP Open SQL for changing database data
- LUW concept
- Enqueue mechanism
- Update technologies
- ABAP types in depth
- Unicode and how ABAP is affected

Notes

- Course length: 20 hours
- Anyone wanting to become a SAP Certified Development Associate - ABAP - SAP NetWeaver 7.0 should work through TAW11 before attending the class TAW12.

TAW12 - ABAP OBJECTS AND HOW TO USE IT



Duration: 10 days

Delivery Type

- Instructor-led Classroom

Audience

- Development consultants who are responsible for developing and adapting ABAP programs

Prerequisites:

Essential

- TAW10 ABAP Basics
- e-learning TAW11 ABAP Details

Recommended

- None

Goals

- Write object oriented programs with ABAP
- Use the enhancement concept
- Create simple ABAP Web Dynpro applications

Course Based on Software Release

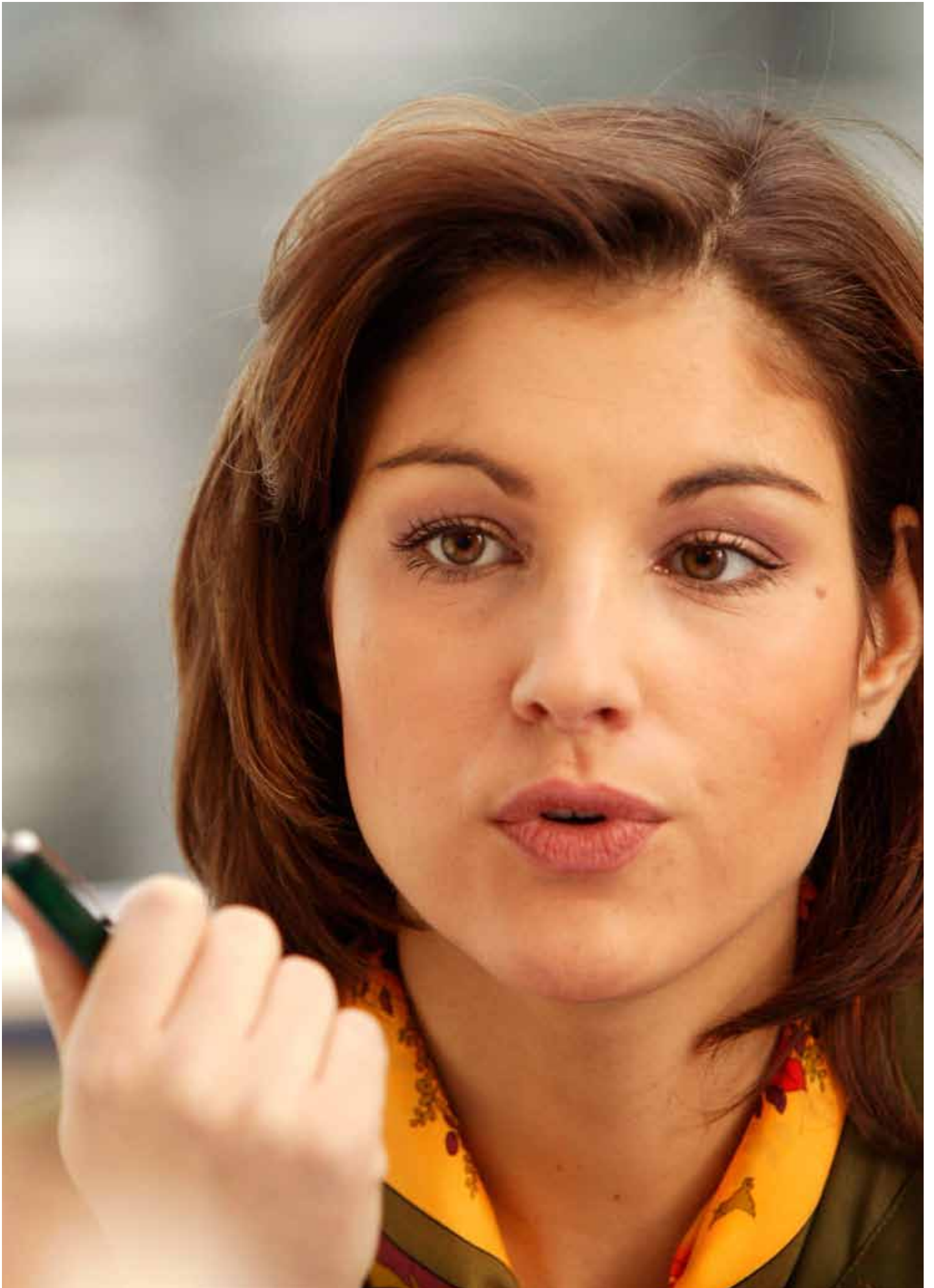
- SAP NetWeaver 7.0

Content

- ABAP Objects: classes and objects, inheritance, interfaces, events, exception handling
- Shared Objects
- Dynamic programming: field symbols, Runtime Type Services (RTTS)
- Enhancements and modifications: enhancing Dictionary elements; Customer Exits, Business Add Ins (BAdIs), modifications
- ABAP Web Dynpro (overview): components, context, controller, UI, navigation
- Certification test to become an SAP Certified Development Associate - ABAP with SAP NetWeaver 7.0

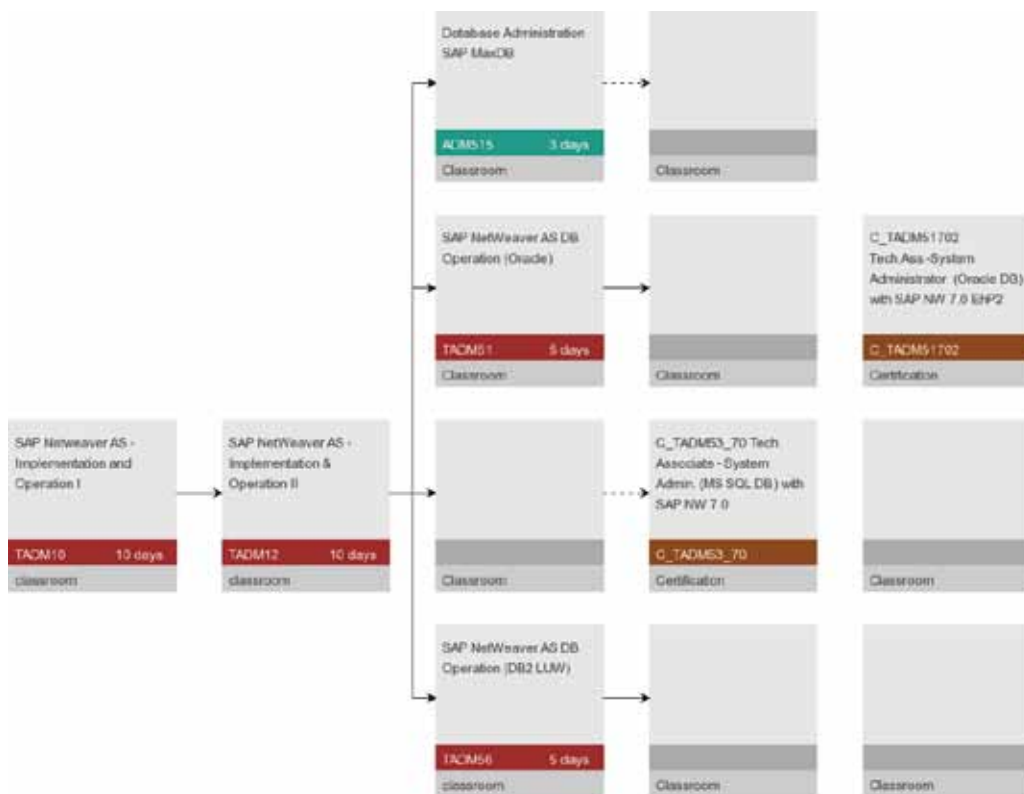
Notes

- Participants must work through the e-learning TAW11e prior to attending TAW12.
- In order to be properly prepared for the certification exam after TAW12, participants might need some extra hours of self-study after the official end of the class every day.



System Administration With SAP Netweaver

System Administration- Basis



Curriculum Map Legend

- | | |
|---|--|
| Overview | Essential |
| Foundation | Recommended |
| Detailed | Classroom Training |
| Delta Knowledge | Virtual Classroom Training |
| Consultant Academy | E-Learning |
| Under development | E-Learning (Online Knowledge Product) |
| Certification | |



SYSTEM ADMINISTRATION WITH SAP NETWEAVER

This certification path will give you a fundamental understanding of SAP Web Application Server implementation and operation in the area of SAP databases (2003) -- so the business can leverage technology to manage and execute key processes. Armed with this knowledge, you'll be positioned to make a meaningful contribution as a technical consultant in a team setting.

TADM10 - SAP NETWEAVER AS IMPLEMENTATION AND OPERATION I



Duration: 10 days

Delivery Type

- Instructor-led Classroom

Audience

- Technology Consultants responsible for the implementation and operation of SAP systems

Prerequisites:

Essential

- Data processing knowledge
- Fundamental knowledge of operating systems and databases

Recommended

- None

Goals

- Perform SAP system administration tasks

Course Based on Software Release

- SAP NetWeaver AS 7

Content

- Fundamentals of SAP Netweaver AS:
 - Introduction to SAP NetWeaver
 - Architecture of SAP Netweaver AS
- Fundamentals of SAP system administration:
 - Starting and stopping an SAP system (incl. SAP MC)
 - System configuration options in AS ABAP and AS Java
- User administration
- System monitoring in AS ABAP and AS Java
- Fundamentals of AS Java
- Change management and software logistics for SAP Netweaver AS
- Configuration of integrated SAP Internet Transaction Server (SAP ITS)
- Internet technologies in the SAP environment:
 - SAP ITS, SAP ICM, SAP Web Dispatcher

Notes

- Most of the topics listed are looked at from the perspective of both AS Java and AS ABAP (user administration, system monitoring, and configuration, starting and stopping, and so on).
- The topics covered in this course also prepare you for your follow-up education needed for Associate certification exams in PI (XI) and Portal. The selection of topics in TADM10 is such, that you are prepared to follow three certification paths. For the certificate Technology Associate – System Administration SAP NetWeaver 7, you further need the knowledge of courses TADM12 and TADM5x.
- To ensure that you retain the knowledge gained in this course and successfully complete the certification examination at the end of course TADM5x, we recommend that you consolidate the content in your own time after the course.



TADM12 - SAP NETWEAVER AS IMPLEMENTATION AND OPERATION II

Duration: 10 days

Delivery Type

- Instructor-led Classroom

Audience

- Technology Consultants responsible for the implementation and operation of SAP systems

Prerequisites:

Essential

- TADM10 SAP Netweaver AS Implementation & Operation I

Recommended

- None

Goals

- Configure the Transport Management System (TMS)
- Understand and apply SAP software logistics (ABAP) concepts and tools
- Plan and perform a simple installation of an SAP ECC system
- Perform other standard SAP system administration activities

Course Based on Software Release

- SAP NetWeaver 7

Content

- Software logistics:
 - Overview of software logistics, configuration of the Transport Management System, performing transports, tools for client copy, OCS Support Packages and SAP Notes
- Installation of an SAP ECC system:
 - Preparing and performing a Windows 2003- and MaxDB-based SAP system installation, post-installation tasks
- Other topics:
 - Fundamentals of printing in SAP systems
 - Configuration of SMTP mail
 - Background processing in SAP systems
 - Connecting SAP systems to a directory server, using LDAP and configuration of central user administration
 - Patching SAP systems (ABAP/Java)
 - Configuring documentation access

Notes

- To ensure that you retain the knowledge gained in this course and successfully complete the certification examination at the end of course TADM5X, we recommend that you consolidate the content in your own time after the course.

ADM515 - Database Administration SAP MAXDB



Duration: 3 days

Delivery Type

- Instructor-led Classroom

Audience

- Database administrators
- SAP system administrators
- Project team members
- Technology consultants

Prerequisites:

Essential

- SAPTEC Fundamentals of SAP NetWeaver Application Server

Recommended

- For SAP system administrators: ADM100 SAP Web AS Administration I
- Basic knowledge of administrating at least one operating system
- Basic knowledge in the area of relational databases

Goals

- At the end of this course you will be able to manage a SAP MaxDB using the database's administration tools (Database Studio, DBMCLI) and tools from the SAP systems
- Implement suitable database backup strategies and
- Recognize performance bottlenecks.

Course Based on Software Release

- SAP NetWeaver Application Server 7

Content

- Basics and database structure
- Data backup
- Backup concepts
- Implementing the backup
- Recovering and repairing the database
- Database monitoring
- CCMS monitors
- Database configuration
- Performance monitoring

Notes

- Those customers who use the SAP MaxDB with non-SAP products may also participate in this course. In this case, they do not have to attend SAPTEC (Fundamentals of SAP NetWeaver Application Server).



TADM51 - SAP NETWEAVER AS DB OPERATION (ORACLE)

Duration: 5 days

Delivery Type

- Instructor-led Classroom

Audience

- Technology Consultants responsible for the implementation and operation of SAP systems

Prerequisites:

Essential

- TADM10 SAPNetWeaver AS Implementation & Operation I
- TADM12 SAP NetWeaver AS Implementation & Operation II
- Sound knowledge of administering the Oracle database

Recommended

- none

Goals

- Use your knowledge of database administration with reference to CCMS database tools in SAP systems and BR tools
- Put effective data backup strategies into practice
- Put to practical use SAP knowledge gained from previous courses and from this course in the role of junior consultant in a practical context

Course Based on Software Release

- SAP NetWeaver Application Server 7
- ORACLE 10g

Content

- Data backups:
 - Backup concepts
 - Backing up data
- Restoring and repairing databases with SAP tools
- Database monitoring:
 - Working with BR tools
 - Working with CCMS tools
- Special features when configuring databases in an SAP environment
- Database storage management
- Database performance monitoring
- Advanced performance analysis topics
- Certification examination for becoming an SAP NetWeaver - SAP Web AS for Oracle covering the content of training courses TADM10, TADM12 and TADM51

Notes

- To ensure that you retain the knowledge gained in this course and successfully complete the certification examination, we recommend that you consolidate the content in your own time after the course.

ADM520 - Database Administration MS SQL Server



Duration: 3 days

Delivery Type

- Instructor-led Classroom

Audience

- Database administrators
- SAP system administrators
- Project team members
- Technology consultants

Prerequisites:

Essential

- SAPTEC Fundamentals of SAP Web AS
- Fundamental knowledge of the Microsoft SQL Server database system and of Windows operating system

Recommended

- SAP system administrators should attend the course: ADM100 SAP Web AS Administration I

Goals

- Increasing your knowledge of database administration by using CCMS database tools in SAP systems and Microsoft SQL Server tools
- Developing suitable backup strategies
- Detecting and solving performance bottlenecks

Course Based on Software Release

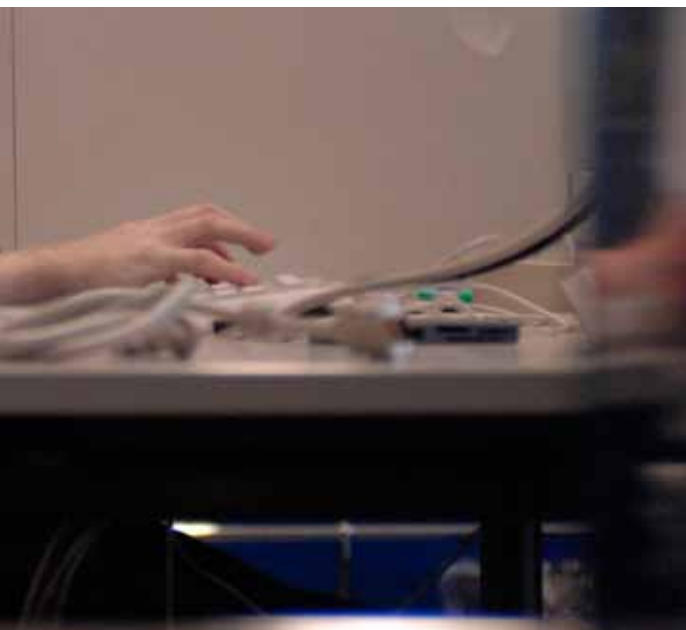
- SAP NetWeaver 7.0

Content

- SAP system architecture and MS SQL Server architecture
- Data backups
- Backup concepts
- Backing up data
- Database restore
- Database monitoring
- Working with SQL Server monitors
- Working with CCMS monitors
- System maintenance and troubleshooting

Notes

- The course materials are in English. However, the course is held in the language of the country where it takes place.
- The course ADM520 (MS SQL Server Database Administration) is held using a Microsoft SQL Server 2005 system.



TADM56 - SAP NETWEAVER AS DB OPERATION (DB2 LUW)

Duration: 5 days

Delivery Type

- Instructor-led Classroom

Audience

- Technology Consultants responsible for the implementation and operation of SAP systems

Prerequisites:

Essential

- TADM10 SAP NetWeaver AS Implementation & Operation I
- TADM12 SAP NetWeaver AS Implementation & Operation II
- Sound knowledge of database administration

Recommended

- None

Goals

- Understand the deep integration of SAP software with the DB2 Database from a consultant's perspective
- Put to use fundamental knowledge of DB2 administration for SAP systems
- Put to practical use SAP knowledge gained from previous courses and from this course in the role of consultant

Course Based on Software Release

- SAP NetWeaver Application Server 7.01

Content

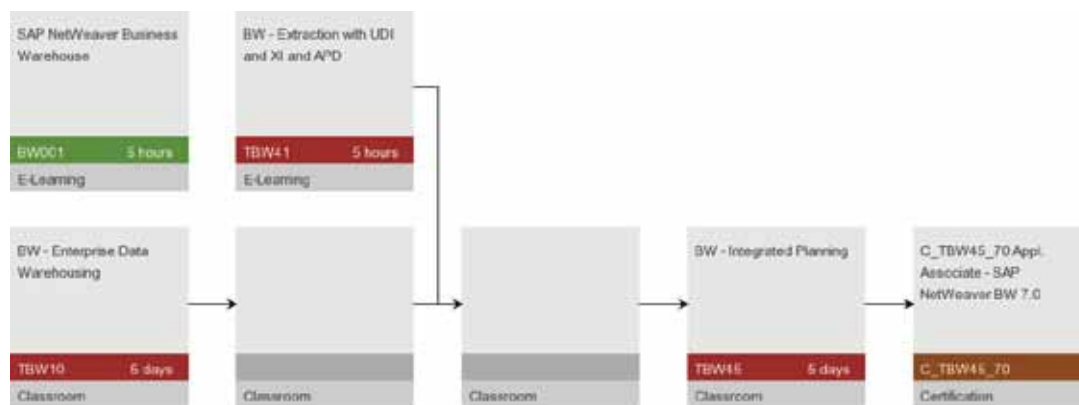
- This workshop is a superset of ADM535 (Database Administration DB2). The material is covered from an expert's perspective.
- The installation of an SAP software component is performed in project teams. Special emphasis is placed on implementing customer systems, for example, SAP NetWeaver 7.01 .
- Database layout and storage management
- Data backup and recovery
- Proactive database monitoring
- Database performance tuning
- High availability options for DB2 databases
- Preventive problem analysis with DB2
- Certification examination for becoming a Technology Associate – System Administration (DB2 LUW) with SAP NetWeaver 7.0 covering the content of training courses TADM10, TADM12 and TADM56

Notes

- This course does not cover DB2 for z/OS or DB2 for i5/OS.
- Course material is available in English only.
- To ensure that you retain the knowledge gained in this course and successfully complete the certification examination, we recommend that you consolidate the content in your own time after the course.

Business Intelligence with SAP NetWeaver 7.0

Business Intelligence



Curriculum Map Legend

| | |
|--------------------|---|
| Overview | — Essential |
| Foundation | -- Recommended |
| Detailed | 📺 Classroom Training |
| Delta Knowledge | 🖥️ Virtual Classroom Training |
| Consultant Academy | 💻 E-Learning |
| Under development | 📄 E-Learning (Online Knowledge Product) |
| Certification | |

P_BIE_70 Appl.
Professional - EDW with
SAP NetWeaver BW 7.0

P_BIE_70
Certification

P_BIR_70 Appl.
Professional - Reporting
with SAP NetWeaver BW
7.0

P_BIR_70
Certification

Business Intelligence

SAP NetWeaver Business Intelligence unites a powerful business intelligence platform, a comprehensive set of tools, planning and simulation capabilities, and data-warehousing functionality -- delivered through sophisticated and user-centric enterprise portal technology to provide a coherent, comprehensive solution. In this curriculum, you'll see how you can use SAP NetWeaver BI to integrate data from across, and even beyond, your enterprise. And you'll discover how to transform that data into practical, timely business information -- empowering you to make sound decisions, take targeted action, and achieve solid business results.



BW001 - SAP NETWEAVER BUSINESS WAREHOUSE



Duration: 5 hours

Delivery Type

- E-Learning

Audience

- Managers, project team managers, and project team members who would like an overview of SAP NetWeaver BW.

Prerequisites:

Essential

- General knowledge of analysis and reporting methods.

Recommended

- None

Goals

- Participants will gain an overview of the functions and possible use SAP NetWeaver BW capabilities in SAP NetWeaver.

Course Based on Software Release

- SAP NetWeaver BW 7.0

Content

- Integration of SAP NetWeaver BW capabilities in SAP NetWeaver
- Architecture and functions of BW
- BW business content and BW metadata repository
- Enterprise Data Warehousing
- Enterprise Reporting, Query & Analysis
- Business Planning and Analytical Services

Notes

- Course length: 5 hours



TBW10 - BW - ENTERPRISE DATA WAREHOUSING

Duration: 5 days

Delivery Type

- Instructor-led Classroom

Audience

- Solution consultants responsible for implementing SAP NetWeaver BW

Prerequisites:

Essential

- Basic knowledge of data warehousing

Recommended

- Experience of one SAP component
- Basic understanding of the Data Dictionary

Goals

- The participants gain the detailed BW knowledge necessary to carry out successful implementation and administration within a heterogeneous SAP BW system landscape

Course Based on Software Release

- SAP NetWeaver BW 7.0

Content

- Architecture of SAP NetWeaver BW 7.0
- Overview of the most important objects (Info objects, InfoProviders and so on) in BW and their properties
- Components of the data flow and extracting data from SAP source systems or other data sources in the BW
- Benefits and use of the BW Content
- Introduction to administration of BW data targets
- Basics for optimizing query performance (BW Accelerator)

Notes

- To ensure that you retain the knowledge gained in this course and successfully complete the certification examination at the end of course TBW45, we recommend that you consolidate the content in your own time after the course.

TBW41 - BW - EXTRACTION WITH UDI AND XI AND APD



Duration: 5 hours

Delivery Type

- E-Learning

Audience

- Solution consultants responsible for implementing SAP NetWeaver BW

Prerequisites:

Essential

- TBW10 BW - Enterprise Data Warehousing
- TBW20 BW - Reporting and Query Design
- This E-Learning is a part of the TBW42. Please visit the TBW42
- First the TBW41 is a self study course.

Recommended

- None

Goals

- In this course, you will become familiar with selected information from the topic areas BW Extraction with UDI & XI, and APD and Transport management

Course Based on Software Release

- SAP NetWeaver BW 7.0

Content

- Universal data integration
- Exchange Infrastructure
- Process Designer analysis
- Transport Management

Notes

- Course length: 5 hours
- To ensure that you retain the knowledge gained in this course and successfully complete the certification examination at the end of course TBW45, we recommend that you consolidate the content in your own time after the course.
- A training system is not available from SAP Education for this e- learning.



TBW20 - BW - REPORTING AND QUERY DESIGN

Duration: 5 days

Delivery Type

- Instructor-led Classroom

Audience

- Solution consultants responsible for implementing SAP NetWeaver Business Warehouse

Prerequisites:

Essential

- TBW10 BW - Enterprise Data Warehousing

Recommended

- None

Goals

- In this course you will gain knowledge that will enable you to create simple and complex query definitions using the BEx Query Designer and to make these available in standard layouts using the BEx Analyzer and the BEx Web Analyzer.

Course Based on Software Release

- SAP NetWeaver 7.0

Content

- Architecture and functions of the SAP BW analysis tools
- Navigation in SAP BW reports
- Creating query definitions using the BEx Query Designer
- Integrating key figures, characteristics, hierarchies, variables, properties, exceptions and conditions in the query definition
- Delivering reports and adhoc-analysis using the BEx Analyzer and the BEx Web Analyzer
- Using the BEx Information Broadcaster to distribute reports
- Integrating reports in the SAP Enterprise Portal
- Integrating documents in reports
- Configuring report-report interfaces
- Using predefined reports from the SAP Business Content

Notes

- To ensure that you retain the knowledge gained in this course and successfully complete the certification examination at the end of course TBW45, we recommend that you consolidate the content in your own time after the course.

TBW42 - BW - ADVANCED ENTERPRISE DATA WAREHOUSING AND REPORTING



Duration: 10 days

Delivery Type

- Instructor-led Classroom

Audience

- Solution consultants responsible for implementing SAP NetWeaver BW

Prerequisites:

Essential

- TBW10 BW - Enterprise Data Warehousing
- TBW20 BW - Reporting and Query Design
- The following is included when you book TBW42: E-Learning TBW41 BW
- Extraction with UDI and XI and APD, which you must complete in your own time before or after the course begins (we recommend that you do it after attending TBW42 for didactic reasons).

Recommended

- None

Goals

- In this course you will gain in-depth knowledge in the areas of extraction, modelling and layout of reports

Course Based on Software Release

- SAP NetWeaver BW 7.0

Content

- Data acquisition (data flow in BW, transformations, delta management, enhancement of Business Content DataSources, process of extracting data from SAP source systems including process chains, data staging via different interfaces, real-time data acquisition, direct access, unit of measure conversion)
- Modeling (developing a BW data model, modeling data marts, enhancing/changing the data model, remodeling, aspects of an Enterprise Data Warehouse architecture, special aspects of modeling and data warehousing, InfoSets, MultiProvider)
- Report layout (using different web items to create demanding web applications, creating formatted reports that are optimized for presentation and printing, advanced options and settings options in the BEx Broadcaster, using the advanced options in MS Excel)

Notes

- To ensure that you retain the knowledge gained in this course and successfully complete the certification examination at the end of course TBW45, we recommend that you consolidate the content in your own time after the course.



TBW45 - BW - INTEGRATED PLANNING

Duration: 5 days

Delivery Type

- Instructor-led Classroom

Audience

- Solution consultants responsible for implementing SAP NetWeaver BW

Prerequisites:

Essential

- For new SAP BW consultants:
- TBW10 BW - Enterprise Data Warehousing
- TBW20 BW - Reporting & Query Design
- TBW41 BW – Extraction with UDI & XI and APD
- TBW42 BW – Advanced Enterprise Data Warehousing & Reporting

Recommended

- None

Goals

- This course give you an in-depth insight into BW integrated planning

Course Based on Software Release

- SAP NetWeaver 7.0

Content

- Status and tracking system
- Setting up planning structures and looking at modelling aspects
- Customizing and executing planning functions
- Setting up a planning query that is ready for input using the BEx Query Designe
- Integrating the planning query in different end-user interfaces
- Displaying different query tools in a planning context
- Using characteristic relationships to integrate the correct business characteri
- Integrating the status and tracking system in planning, as a monitoring tool
- Certification examination for SAP NetWeaver BW Solution