

Paulaner beer pipeline

Controlled by Siemens software

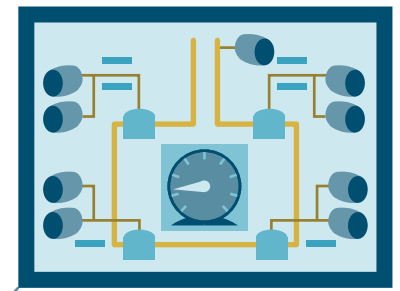
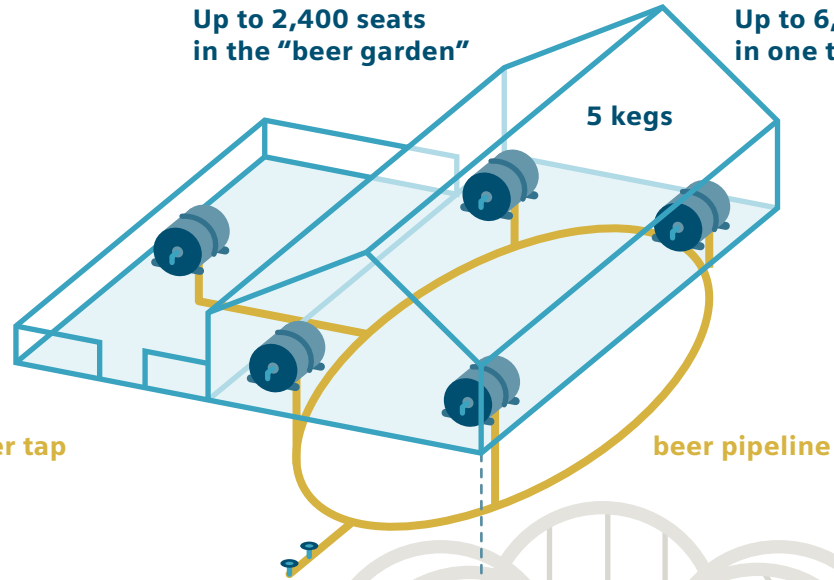
In three festival tents (Winzerer Fähndl, Bräurosl, Hacker), the Munich brewery Paulaner uses Siemens technology to pump the beer from the tanks to the taps - controlling sales and throughput at all times.



Every 3 seconds up to 1 "Mass" per tap

Up to 2,400 seats in the "beer garden"

Up to 6,900 seats in one tent



Mass-O-Meter

"Mass-O-Meter" (a "Mass" is a liter) indicates the exact rate of flow of the beer. The system sends data on quantities of beer sold to the brewery and host via web browser, tablet PC or smartphone.



Altogether 3 tents are supplied

tanks

beer pipeline

The vital ingredients for modern breweries:

MALT
HOPS
WATER
YEAST



Brewhouse



Fermentation cellar



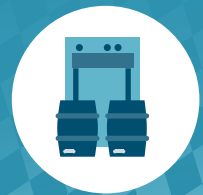
Storage



Filtration



Filling



Consistent automation through the entire production process with Siemens' Braumat process control system

Automation and digitalization make production more efficient, flexible and reliable and help to avoid or eliminate production errors.

+
PRODUCTION DATA

Temperature Pressure
Tank Farm Management Energy Management Identification Control Center
Ingredients Condition Monitoring Level and Flow
Route Control System

© Siemens AG 2015