



# SIEMENS

Ingenuity for life

## XHQ Helper Tools

Expand the benefits of your XHQ solution

[siemens.com/xhq](https://siemens.com/xhq)

### Rapid Start with Best Practices

**XHQ Helper Tools** are a set of pre-built content and tools that can be added to enrich your XHQ solution and help you get the XHQ benefits you planned rapidly.

#### You get:

- Tools and libraries with elements that can be reused in any any XHQ system
- High-value, best practice approaches based on decades of project experience
- Field-proven scalability for multiple business areas
- Tailorable tools to your unique business needs

Currently there are two types of Helper Tools available: View Converters and Custom Data Entry.

### XHQ Helper Tool: View Converters

#### Who benefits?

If you have schematics developed in other tools that would be useful to a wider audience, then the View Converters can help you unlock the value of those schematics.

#### The benefits you get:

The entire enterprise benefits when all users have access to schematics that otherwise would only be available from a proprietary systems.

- Access to **process information at your fingertips** – no need to ask for admission into the operations control room
- See the **big picture** - users who have access to other non-control data now can see in the context of the greater process
- Better and faster **decisions** – updated information, in context, anytime, at your fingertips

#### What is in it:

The resulting XHQ views are very high fidelity replicas of their control systems counterparts – just now capable of bearing broader context and richer detail than any control system display can provide.

Convert schematics and graphic images from proprietary systems, including:

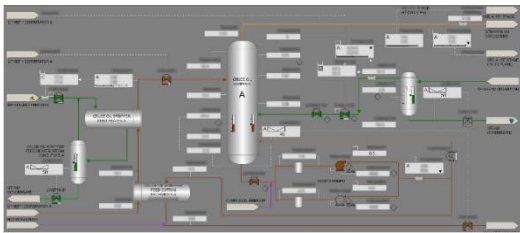
- Honeywell Experion®
- Honeywell TDC-3000®
- AspenTech IP21®
- OSIsoft PI ProcessBook®

Converted views can be used with any supported XHQ release and do not need to be changed when XHQ is updated.

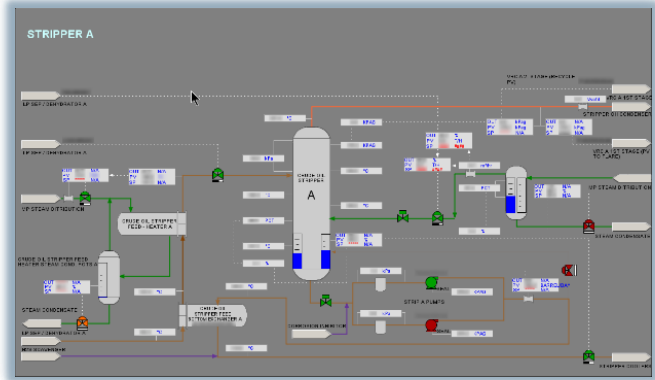
### XHQ View Converters

- ✓ Expand your solution domain and use any third party schematics in XHQ
- ✓ Minimize graph conversion costs
- ✓ See your control system information in detail and in context

Example of View Conversion:



Honeywell Experion®



XHQ

## XHQ Helper Tool: Custom Data Entry

### Who benefits?

All users who need efficient data validation and cleansing, eg. operations personal, engineers, maintenance...

### The benefits you get:

By adding data entry capabilities to XHQ, users take advantage of XHQ rich cross-functional environment, allowing actions to be taken in the right context.

### What is in it:

- Add data entry to any XHQ screen
- Write to any relational database
- Configurable for multiple uses at any XHQ system
- Provides forms and data validation
- Integrated with XHQ security model

### XHQ Custom Data Entry

- ✓ Quickly develop XHQ modules which require data entry
- ✓ Be notified when certain write operations take place
- ✓ Better and faster decisions

Example of integrating data entry and XHQ Views

Contact us to learn how to have immediate benefits with reliable and real-time information at your fingertips.

E-mail: [info.xhq@siemens.com](mailto:info.xhq@siemens.com)