

Rainproof Combination Metering

Catalog Number **JA2442B1400SD**

Class CTL Panelboard

Device Rating: 400 Amp, Max; 120/240 Volts ~, 1 phase, 3 wire

Meter Socket Rating: 400 Amp Max. 320 Amp Continuous

For installation by Qualified Person in accordance with all local electrical codes and/or the National Electrical Code.®

Suitable Only For Use As Service Equipment

For Underground Service Only

Terminals Suitable for 60°/75° C Copper or Aluminum Conductor

Unused neutral branch terminals may be used to terminate equipment grounding wires in the combinations indicated for equipment ground bar terminals.

General Information:

Circuit breaker trip position is indicated by handle position midway between ON and OFF. To reset, move handle to OFF position then turn ON.

Sum of MP-T, MP-HT or MP-MT breaker rating is not to exceed 140 amps per branch circuit bus stab.

Any MP-T, MP-HT or MP-MT breaker 100 Amps or more must be connected to the bottom two stabs.

Line Terminals:

Provisions for UL listed one or two hole NEMA mounting terminals. Compression terminals to #750 kcmil, single conductor, ILSCO type ACL or 2ACL.

Installation Tool : THOMAS & BETTS #

TBM8 for #10-350kcmil(AL),#8-500kcmil(CU)

TBM8-750M-1 for #8-750kcmil(CU/AL)

Tightening Torques:

5/16" Nuts(1/2" Drive).....130-140 in-lbs

3/8" Nuts(9/16" Drive).....240-260 in-lbs

1/2" Nuts(3/4" Drive)490-540 in-lbs

Accessories:

Accessories:

Filler Plate

600 Amp Main Breaker

LUG #6-350 kcmil

LUG #2-600 kcmil

LUG 500-1000 kcmil

Flush Rail Kit

Mechanical Interlock

K4 By Pass

LUG KIT #2-2/0

QF3 or ECQF3

JXD22B400

SUK350TA

SUK600TA

SUK1000TA

ECFRK1

ECQML12

H56495

ECLK2125

Load, Neutral and Ground* Terminals:

Terminal	Wire Size	Torque
A, B, N		
SUK350TA	(2)#6-350kcmil	275 lb-in
SUK600TA	#2-600kcmil	375 lb-in
SUK1000TA	500-1000kcmil	500 lb-in
N1	300 Kcmil - #4	250 lb-in.
G1	2/0 - #14	50 lb-in.
Branch Breaker Terminals	See Markings on Breaker	
Neutral Bar/ Ground Bar (1/0-14)	#10 - #14 CU	35 lb-in
	#10 - #12 AL	35 lb-in
	#8	40 lb-in
Neutral Bar/ Ground Bar (6-14)	#10 - #14 CU	20 lb-in
	#10 - #12 AL	20 lb-in
	#8	25 lb-in
	#6	35 lb-in

* Only Equipment Ground Terminals may use more than one wire per terminal.

Ground Terminal Size	Wire Range	Torque
1/0-#14	(2 or 3) #12-14 CU,	35 lb-in
	(2 or 3) #10-12 AL,	35 lb-in
	(2) #10 CU	35 lb-in
	(3) #10 CU	50 lb-in
#6-#14	(2) #12-14 CU,	20 lb-in
	(2) #12AL	20 lb-in
#4-#14 (ECGB)	(1, 2 or 3)#14,	20 lb-in
	(1 or 2) #12-#10	20 lb-in
	#8	25 lb-in
	#6-#4	35 lb-in

Short Circuit Current Rating (Wattour Meter not included in short circuit rating)

This panelboard has a short circuit current rating of 22,000 Amps RMS symmetrical, 120/240 V~. The correct branch circuit breakers and main/branch breaker series combinations to be used for various short circuit current levels are listed in the tabulation below. Any circuit breaker installed, replaced, or added in this panelboard must be manufactured by Siemens and must be of the correct type as indicated in the tabulations below.

PANELBOARD MAIN	BRANCH BREAKER	Then the maximum short circuit current rating in RMS Symmetrical Amperes 120/240V AC is
When the installed panelboard main breaker is a Siemens type	And the branch breakers installed are type	
JXD2-A	MP-T,MH-T,MP-GT,MP-ET,MP-AT,MD-TR	10,000
	MP-HT,MP-MT,MP-HGT,MP-HET,MP-HAT,MD-TR,MD-HTR	22,000

MANUFACTURING DATE:

J2

4099927 REV. G

Important Do not spray or allow any petroleum based chemicals, solvents, or paint to contact interior components.

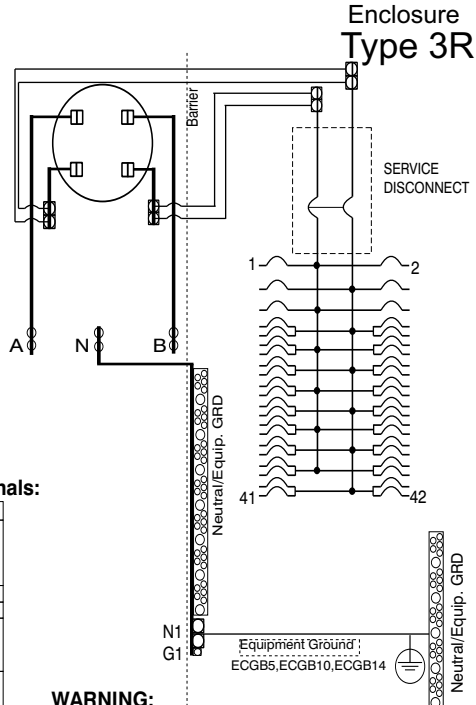
©The National Electrical Code is a registered trademark of the National Fire Protection Association.

©2006 Copyright Siemens Energy & Automation, Inc.

Murray Electrical Products
Siemens Energy & Automation, Inc.
Alpharetta, Georgia U.S.A.

ASSEMBLED IN MEXICO

MURRAY



WARNING:

Removal of meter does not de-energize circuit when By-Pass provided.

If hub is required, use the catalog numbers listed below:

Trade size (in)	Catalog number
HD Type Hub (Top and Bottom Endwall)	
(Top Hub Opening Available Only On Surface Mounted Devices)	
2"	EC56854
2 1/2"	EC56855
3"	EC56856
3 1/2"	EC56857
4"	EC56858
Closure Plate	EC56933S