

# General Duty Safety Switch

## Type VBII, 30 Amp, 240 Volts, Type 1 (Indoor)

### Standards and Ratings

- UL Listed under file #E4776
- Meets UL98 for switches and UL50 for enclosures
- Meets NEMA Standard KS-1 for enclosed switches
- Meets NEC wire bending space requirements
- Rated 10,000 AIC with Class H fuses or 100,000 AIC with Class R fuses

- Suitable for use as service entrance equipment

### Features

- Quick-make and break switching action
- Double break visible blade design
- Highly visible ON/OFF indication
- Single cover interlock

### General Information

| Catalog Number      | Description                  | Ship. Wt. (lbs.) (Std Pkg) |
|---------------------|------------------------------|----------------------------|
| GF321N              | 3 Phase, 4 Wire, Fusible     | 24 (5)                     |
| GNF321 <sup>1</sup> | 3 Phase, 3 Wire, Non-Fusible | 24 (5)                     |

### Horsepower Ratings<sup>2</sup>

| Catalog Number | 1 Phase, 2 Wire, 240V AC |     | 3 Phase, 3 Wire, 240V AC |     | 250V DC |
|----------------|--------------------------|-----|--------------------------|-----|---------|
|                | Std                      | Max | Std                      | Max |         |
| GF321N         | 1½                       | 3   | 3                        | 7½  | 5       |
| GNF321         | —                        | 3   | —                        | 7½  | 5       |

### Accessories

| Catalog Number       | Description                                   |
|----------------------|-----------------------------------------------|
| GSRK60               | Equipment Ground Kit (Wire Range #14-2 Cu/Al) |
| W410190 <sup>1</sup> | Neutral Kit                                   |
| GSRK321              | Class R Fuse Clip Kit                         |

### Replacement Parts

| Catalog Number | Description                                       |
|----------------|---------------------------------------------------|
| W410473A       | Fusible Replacement Interior 3-Pole (GF321N)      |
| W410473B       | Non-Fusible Replacement Interior 3-Pole (GNF321N) |

### Mechanical Lug Wire Ranges (60/75°C, Cu/Al)

| Description         | Wire Range      |
|---------------------|-----------------|
| Line, Load, Neutral | #14-6 AWG       |
|                     | or<br>#14-8 AWG |

<sup>1</sup> Use Neutral Kit for 1-phase, 3-wire or 3-phase, 4-wire applications.

<sup>2</sup> Dual horsepower ratings:

Std - applies when non-time delay fuses are installed.

Max - applies when time-delay fuses are installed.

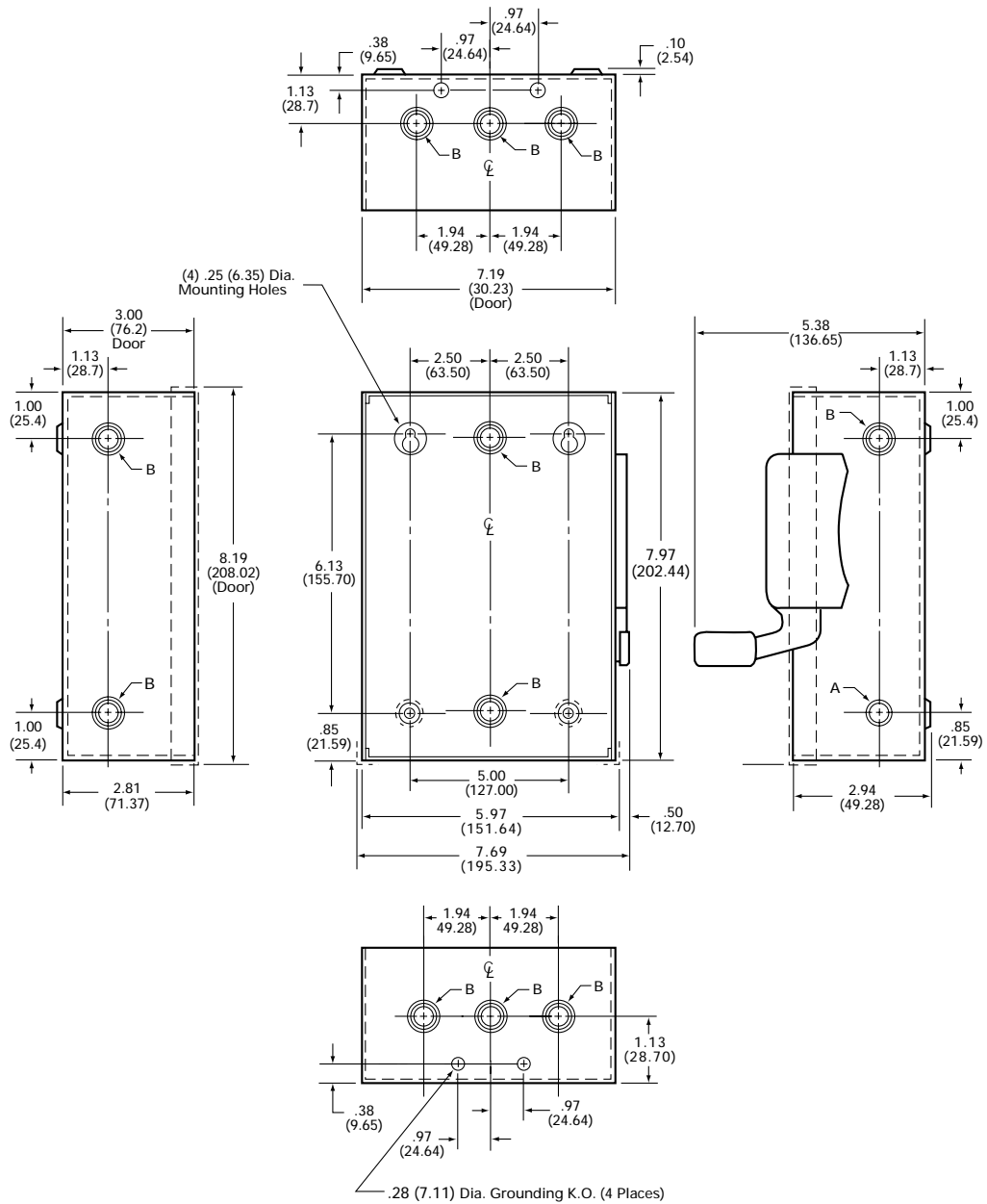
## Product Specification Sheet GD30.2

Answers for industry.

**SIEMENS**

# Product Specification Sheet #GD30.2 (page 2 of 2)

## Dimension Drawing



Dimensions shown in inches and millimeters ( ).  
Dimension shown accurate to ± 1/8 inch.  
Note: Handle shown on front and right hand views only.

| KNOCKOUT CODE  | CONDUIT SIZE |     |      |
|----------------|--------------|-----|------|
|                | .50          | .75 | 1.00 |
| A (Concentric) | .50          | .75 | 1.00 |
| B (Concentric) | .50          | .75 | 1.00 |

|       | LINE SIDE WIRE BEND | LOAD SIDE WIRE BEND |
|-------|---------------------|---------------------|
| Fused | 2.00 (51)           | 1.50 (38)           |

Enclosure: Cold Rolled Steel  
.048 Thick (18 Gauge)  
Finish: ANSI Grey #61 Paint