

The background of the entire page is a blue-tinted image of a man in a grey lab coat looking at a laptop. Overlaid on this are several semi-transparent digital interfaces. On the left, a vertical menu lists 'Open existing project', 'Create new project', 'Migrate project', and 'Close project'. Below this is a 'Welcome Tour' section with 'First steps'. On the right, another interface shows 'First steps' with a 'Start' button and a message 'Project: "Project2" was opened successfully'. Below that is a 'Devices & networks' section with a 'Config' button, and a 'PLC programming' section. The bottom of the page features a teal banner with the title 'HMI Panel Replacement' and a white banner with the URL 'usa.siemens.com/hmi'.

SIEMENS

Ingenuity for life

HMI Panel Replacement

Easy-to-configure, cost-effective HMI Panels offering superior performance and direct communication on 3rd party network

usa.siemens.com/hmi




Contents

HMI Panel replacement challenges and Siemens solution	2
Why choose Siemens HMI Panels?	3
Siemens HMI Panel communication capabilities "at-a-glance"	4
HMI Panel replacement made easy with SIMATIC WinCC TagConverter	5
Why choose Siemens as your modernization partner?	6



Is it time to change or rethink your panel strategy?

Siemens offers easy-to-configure, cost-effective HMI Panels offering superior performance and direct communication on 3rd party networks

Challenges	How Siemens can help
<p>I need a panel that will offer cost savings while reducing engineering effort and minimizing downtime.</p> 	<p>Siemens HMI Panels offer cost savings by allowing you to standardize, regardless of your controller, due to the built in communication drivers with direct network connectivity to PROFINET, EtherNet/IP™, Modbus™ TCP/IP, and other Ethernet communications protocols.</p> <p>As your business grows, our scalable HMI Panel family reduces engineering effort, due to our single programming software that allows you to easily switch panel size with auto scale functionality to meet your every demand.</p> <p>Siemens HMI Panels have automatic back-up for the O/S, application and device settings on an SD card, protecting your information. In the unfortunate event you experience damage, transfer of the SD card to the new panel allows for fast device replacement to quickly get the system back up and running.</p>
<p>I need to have access to the existing data in the new HMI project.</p> 	<p>SIMATIC WinCC TagConverter allows 3rd party PLC tags to be easily imported into our software, saving you engineering time and preserving your data. See page #6 for more details.</p>
<p>I need more advanced hardware and software capabilities at a competitive price.</p> 	<p>Siemens cost-effective HMI Panels offer many innovative features, including pop-up windows, slide-in windows, camera control, a 2nd Ethernet port, industrial styles/designs/controls...and much more! See next pages for more details.</p>

Why choose Siemens HMI Panels?



Siemens HMI Panel Family “Best-in-Class” Features: Hardware

Protocols that are easily configurable and supports direct communication to current and legacy controllers:
Allen -Bradley®, Mitsubishi, OMRON, Modicon and OPC UA Client/Server

Rugged design, including **aluminum front casing** that meets **vibration** and **chemical resistance** for **harsh environments**. Outdoor panels for **extreme ambient conditions** (IP65) and wash-down panels (IP66k) for **hygienic environments**.

16:9 screen resolution for **40% larger visualization area** than conventional displays for complex operating screens

Photo-realistic images, optimal readability and a detailed process display due to

- **High resolution 16 million colors**
- **170° viewing angle** (vertical/horizontal)

Backlights **reduce energy cost** due to lower consumption and longer lifespan

- **Up to 80,000 hr** backlights (last at least **60% longer** than standard industrial 50,000 hr backlights)
- **0-100% dimmable backlights** to preserve backlight and/or prevent retina burn in dark environments

PROFIBUS and PROFINET interface for low-cost connection of distributed field devices or couplings

Audio out – audio port allows you to play maintenance annunciations for further instructions and alarms for notifications

10/100/1000 Mbps **Ethernet port** supports **Gigabit transfer speeds** and allows **network segmentation** at the HMI Panel



Standard product includes viewers for pdf, Word, Excel; Internet Explorer and Media Player – for drawing, parts lists, training and instructional video

Installation in **landscape or portrait format** to meet application and space needs

Web Server – access to websites and devices increase the efficiency and effectiveness of operators and technicians on the plant floor

Pack and Go – Ability to send changes to panel users without the need for engineering software

System card permits **device replacement** without a programmer, SD card as additional memory for user data

Integrated USB interfaces for the connection of USB I/Os (flash drive, printer, mouse, barcode scanner, etc.)



Options not available on all models

2 port 10/100 Mbps **Ethernet switch** for panel-to-panel communications, reducing need for separate switch

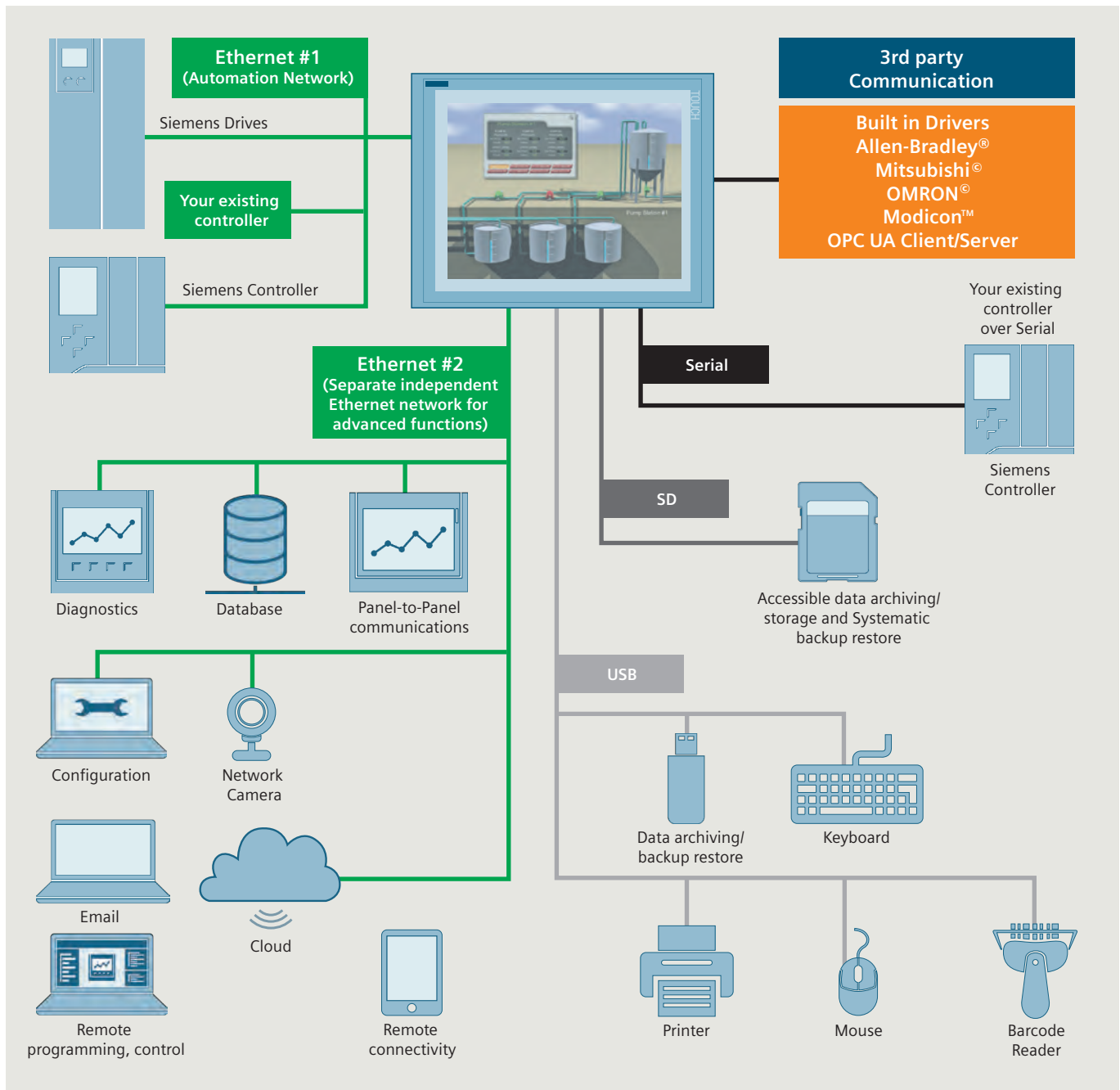
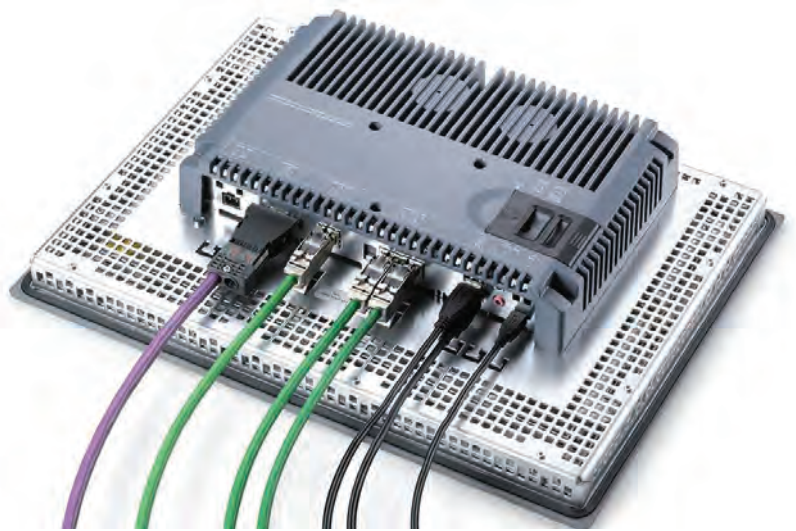
Siemens HMI Panel Family “Best-in-Class” Features: Software

A single, intuitive SIMATIC WinCC programming software tool across the entire HMI Panel family for easy configuration and reduced engineering time!



- Comprehensive **library concept** for user-definable objects and faceplates
- Intelligent tools for **graphical configuration** and **mass data handling**
- Expanded service concepts with **remote operation, diagnostics** and administration over Ethernet, including email communication
- **Scalable runtime functionality**, from the Basic Panel to distributed SCADA applications
- **Innovative configuration interface** based on the latest software technologies
- **No additional cost for a driver** to allow Siemens HMI panels to communicate with 3rd party controllers

Siemens HMI Panel communication capabilities "at-a-glance"



HMI Panel replacement made easy with SIMATIC WinCC TagConverter



SIMATIC WinCC TagConverter allows 3rd party PLC tags to be easily imported into our WinCC programming software, saving you engineering time and preserving your data.

SIMATIC WinCC TagConverter

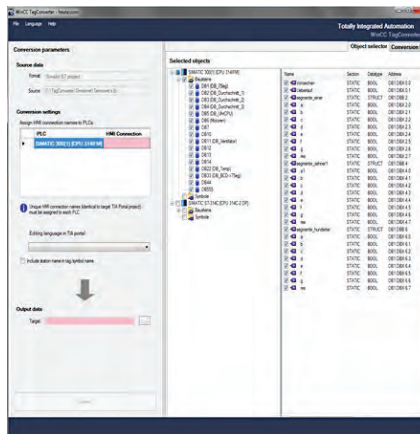
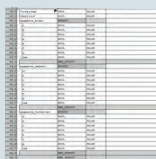
Schneider Electric®/ Modicon®
ProWORX, Concept, Unity Pro XL

Allen-Bradley®
RSC-5®, SLC™ 500,
and ControlLogix®

Converts

- Counter
- Timer
- Alias Tags
- Multi-dimensional arrays
- UDTs

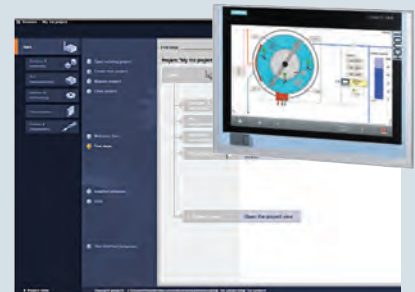
tags/symbols



Export
file

Import into
WinCC
(TIA Portal)

Converted file ready
to import into WinCC



tags/symbols

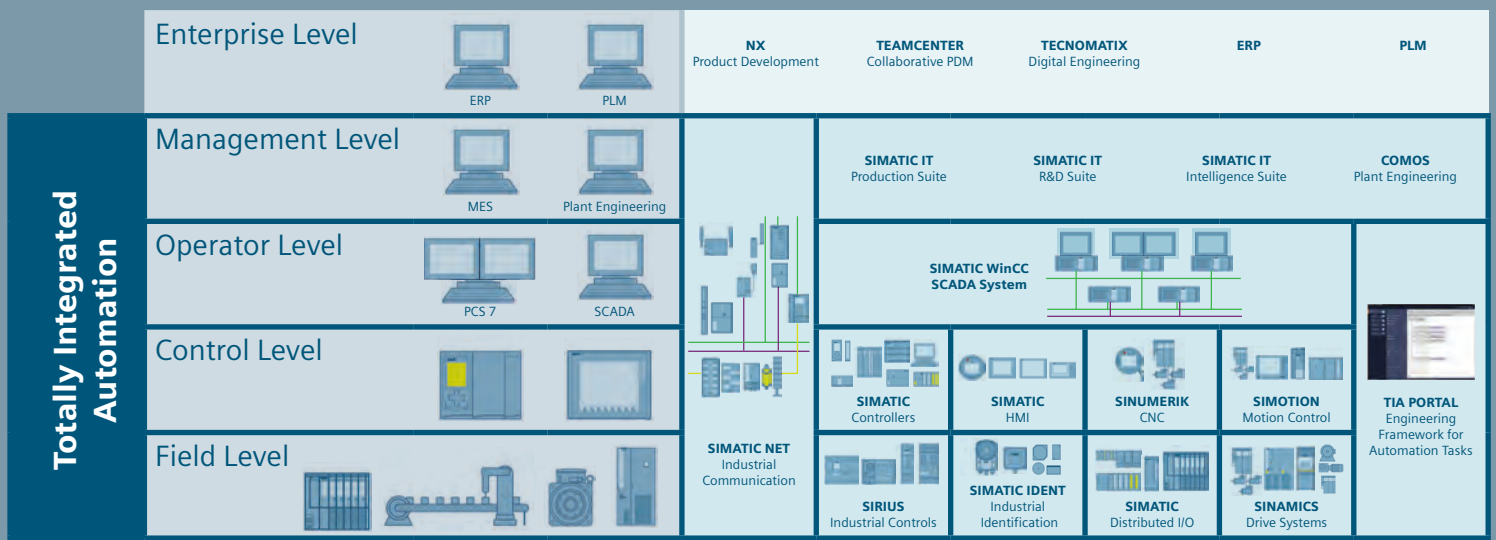


To download the tool, please visit:

[https://support.industry.siemens.com/cs/document/56078300/tagconverter-for-wincc-\(tia-portal\)?dti=0&lc=en-US](https://support.industry.siemens.com/cs/document/56078300/tagconverter-for-wincc-(tia-portal)?dti=0&lc=en-US)

Global carpet manufacturer switched to Siemens HMI Panels, while retaining non-Siemens controllers and realized the following benefits:

- Reduced costs due to standardization on Siemens HMI Panels while maintaining current controller base
- Reduced engineering time and preservation of data by not having to recreate tags through the use of the Siemens WinCC TagConverter
- Increased productivity due to remote connectivity functions via application web pages
- Maintain costs while benefiting from more advanced, innovative HMI feature



Siemens HMI Panels are just one of many innovative solutions we offer, from the field level through to the enterprise level, to help you improved productivity, efficiency and connectivity. Whether you're replacing components in an existing system or investing in a future-focused complete solution, Siemens has the technology, expertise and support to customize a solution that can transform your organization into a Digital Enterprise.

A future-focused, totally integrated approach

Totally Integrated Automation (TIA)

TIA is an open system architecture that covers the entire production process and offers maximum interoperability across all automation components. This is accomplished by the following shared characteristics: consistent data management, global standards, and uniform hardware and software interfaces — which minimize engineering time, reduce costs and boost flexibility.

TIA optimizes the entire manufacturing process, leading to **increased ROI** by:

- Improving engineering efficiency for lower design costs
- Minimizing downtime by applying integrated diagnostic functions
- Boosting production flexibility through the use of integrated communication tools
- Enhancing plant and network security through integrated security functions
- Improving safety with technologies that protect personnel, machinery and the environment
- Optimizing data quality with a single, streamlined database
- Improving access to data for smarter decisions
- Simplifying implementation of automation solutions with global standards
- Improving overall performance through the interoperability of system-tested components

Totally Integrated Automation (TIA) Portal

The key to unlocking the full potential of TIA is our TIA Portal — a single engineering framework that seamlessly integrates controllers, distributed I/O, HMI, drives, motion control and motor management — allowing you to **reduce your engineering time by up to 30%**.

Significant TIA Portal features and benefits that enable you to **reduce your engineering time while increasing your level of transparency and diagnostics** include:

- Integrated “no-programming” system diagnostics, automatically generated during device configuration
- One common tag database for fewer mistakes
- Ability to create custom libraries to be shared across your corporate servers for easy creation of company standardization for projects
- An overall project management tool that allows for complete system (multiple controllers, HMIs, networks, etc.) to be programmed, monitored, saved and stored all in one software package
- Easy-to-use, intuitive system functions, such as implementation wizards and drag and drop between editors, for fewer clicks and faster engineering
- Additional time-saving functions, such as online/offline comparisons, pictorial system view with online diagnostics, no-PC-required trace functions and the ability to make code modifications while in “run” state without stopping the PLC

How did we calculate the 30% TIA Portal savings?

We interviewed actual Siemens customers who implemented our TIA Portal engineering framework and asked them to share their success stories. Read their stories and watch the videos at: usa.siemens.com/tia-portal-references

Find out more: usa.siemens.com/tia
usa.siemens.com/tia-portal

Why choose Siemens as your modernization partner?



Best-in-class individual components that will add future focused capabilities to your existing system

For manufacturers that want to upgrade individual products, Siemens offers a comprehensive, competitively priced automation portfolio that can be used in your existing system to enhance performance, offering:

- Ease of integration with existing assets
- Easy-to-configure hardware and software
- Resolution of maturity/obsolescence issues by replacing legacy components with state-of-the-art technology
- Innovative features to support flexibility and competitiveness
- Flexibility to support various network protocols, including PROFINET and EtherNet/IP

For more information on our products, see pages 10 and 11.



Support



Support and Consulting Services

- **Industry Online Support site** is your resource for comprehensive information, FAQs and application examples covering all products, systems and services in the fields of automation and drives, as well as for the process industry. **Support requests** may also be initiated and tracked on this site.
- **Technical and Engineering Support** specialists provide 24/7 advice and answers for all inquiries about functionality, handling, and fault clearance of Siemens industrial products and solutions — via phone, email, support request, and remote access. Services also cover **obsolete and discontinued products**.
- **Regional Application Engineers** provide local assistance.
- **Experienced global network of Certified Solution Partners** with extensive industry knowledge using Siemens components for the implementation of tailored solutions for your specific applications and timetable.
- **Global support** available in 190 countries. Standardized global part numbers and ease of communication in your preferred language.



Training Services

We help you to assess, define, implement and manage a **workforce improvement program** that is customized to your exact learning needs. Courses include **product, safety and certification learning programs** delivered the way you want them — **in-person, virtual instructor-led** or using our **digital environment**.

Contact us today!

Industry Customer Care Center
800-333-7421

Siemens Basic Technical Support Services provide you with more value, reducing your Total Cost of Ownership (TCO)

- No Charge single, toll-free number with live operators
- No Charge basic technical support until product maturity during normal business hours
- No Charge online support services

The technical data presented in this document is based on an actual case or on as-designed parameters, and therefore should not be relied upon for any specific application and does not constitute a performance guarantee for any projects. Actual results are dependent on variable conditions. Accordingly, Siemens does not make representations, warranties, or assurances as to the accuracy, currency or completeness of the content contained herein. If requested, we will provide specific technical data or specifications with respect to any customer's particular applications. Our company is constantly involved in engineering and development. For that reason, we reserve the right to modify, at any time, the technology and product specifications contained herein.

Published by
Siemens Industry, Inc. 2017.

Siemens Industry, Inc.
5300 Triangle Parkway
Norcross, GA 30092

For more information, please contact
our Customer Support Center.

Phone: 1-800-241-4453

E-mail: info.us@siemens.com

usa.siemens.com/hmi

Order No. HMBR-MDRSN-0417

Printed in U.S.A.

© 2017 Siemens Industry, Inc.

Contact Siemens today for a free consultation!

Locate a Siemens Migration Partner near you by
calling 1-888-454-4704 or visiting the web:

- Siemens Sales Representative:
www.usa.siemens.com/saleslocator
- Siemens Distributor:
www.usa.siemens.com/distributorlocator
- Siemens Solution Partner:
www.usa.siemens.com/solutionpartnerlocator

