

BOX TERMINAL 4 PCS. ACCESSORY FOR: 3VA6 150/250



Model	
Product brand name	SETRON
Product designation	accessories

Connections according IEC	
Connectable conductor cross-section	
<ul style="list-style-type: none"> <li>for copper cable / finely stranded / minimum</li> </ul>	35 mm <sup>2</sup>
<ul style="list-style-type: none"> <li>for copper cable / finely stranded / maximum</li> </ul>	150 mm <sup>2</sup>
<ul style="list-style-type: none"> <li>for copper cable / stranded / minimum</li> </ul>	25 mm <sup>2</sup>
<ul style="list-style-type: none"> <li>for copper cable / stranded / maximum</li> </ul>	185 mm <sup>2</sup>
Wire stripping length	19 mm
Tightening torque / when using copper cables	
<ul style="list-style-type: none"> <li>stranded</li> </ul>	<= 35 mm <sup>2</sup> : 6 Nm, >= 50 mm <sup>2</sup> : 12 Nm
<ul style="list-style-type: none"> <li>finely stranded</li> </ul>	<= 35 mm <sup>2</sup> : 6 Nm, >= 50 mm <sup>2</sup> : 12 Nm

Connections according UL	
Wire stripping length	0.75 in
Connectable conductor cross-section	
<ul style="list-style-type: none"> <li>for copper cable / stranded / minimum</li> </ul>	4 AWG
<ul style="list-style-type: none"> <li>for copper cable / stranded / maximum</li> </ul>	350 kcmil

- for copper cable / finely stranded / minimum
- for copper cable / finely stranded / maximum






4 AWG  
350 kcmil

Tightening torque / when using copper cables

- stranded
- finely stranded

<= 1 AWG: 70 lb-in, >= 1/0 AWG: 140 lb-in  
<= 1 AWG: 70 lb-in, >= 1/0 AWG: 140 lb-in

## Certificates

General Product Approval	EMC	Declaration of Conformity	other
 CSA	 UL		 RCM
		 EG-Konf.	<a href="#">Miscellaneous</a>

## Further information

**Information- and Downloadcenter (Catalogs, Brochures,...)**

<http://www.siemens.com/lowvoltage/catalogs>

**Industry Mall (Online ordering system)**

<https://mall.industry.siemens.com/mall/en/en/Catalog/product?mfb=3VA9244-0JA12>

**Service&Support (Manuals, Certificates, Characteristics, FAQs,...)**

<https://support.industry.siemens.com/cs/ww/en/ps/3VA9244-0JA12>

**Image database (product images, 2D dimension drawings, 3D models, device circuit diagrams, ...)**

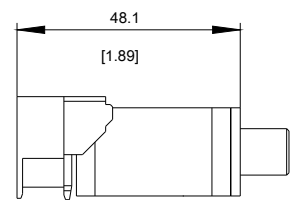
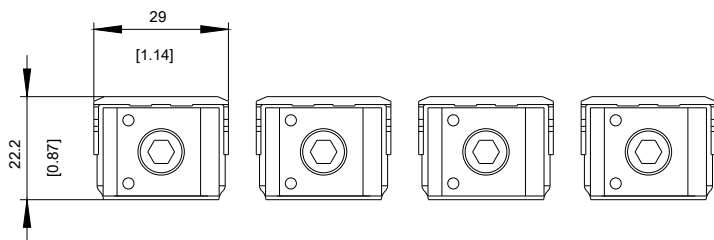
[http://www.automation.siemens.com/bilddb/cax\\_en.aspx?mfb=3VA9244-0JA12](http://www.automation.siemens.com/bilddb/cax_en.aspx?mfb=3VA9244-0JA12)

**CAX-Online-Generator**

<http://www.siemens.com/cax>

**Tender specifications**

<http://www.siemens.com/specifications>



**last modified:**

11/20/2017