

ACSESVIEW™

PC Interface to ACSES: Amtrak's Advanced Civil Speed Enforcement System

Rail Automation

Siemens's solution for system diagnostics, performance monitoring, and wayside troubleshooting!

ACSESVIEW™ Software turns an ordinary Notebook Computer into a powerful, flexible, easy-to-use piece of Portable Test Equipment. Our on-board datalog provides a complete detailed record of system parameters—No pre-qualifying assumptions limit available data.

Use powerful and flexible display and triggering capabilities to zero in on problems quickly without wading through unrelated data.

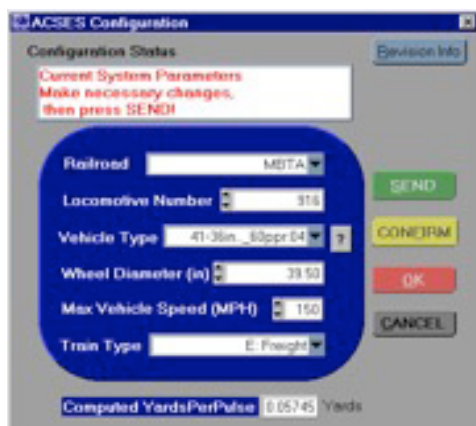
Implemented using proven techniques Siemens has developed through 14 years of experience with AMTRAK, CSX, and MBTA maintenance departments.

ACSESVIEW™ Capabilities

ACSESVIEW™ can **Configure** ACSES operational parameters, **Upload** a datalog from the ACSES on-board computer "Flash" memory or perform diagnostics and analysis using **Playback Datalog** or **Real-Time Monitor Features**.

Configure ACSES

ACSESVIEW allows viewing and modification of the vehicle configuration data needed for ACSES to properly measure distance traveled and enforce restrictions, etc on a vehicle.



Upload Datalog

ACSESVIEW™ provides flexible upload options to make it easy to retrieve only the data of interest without wasting time.

Upload options include:

- All available data
- Most recent data (i.e. last 8 hrs)
- Specific date/time range

The uploaded data is stored in a file that can be "Played Back" using ACSESVIEW™ allowing the powerful display and triggering options to be used to quickly scan the datalog for the information or conditions of interest!

PlayBack Datalog/Real-Time Monitor

The operational parameters logged by the ACSES On-Board Computer can be reviewed and analyzed either by **Playback Datalog** (for uploaded datalogs) or by **Real-Time Monitor Features**.

Either way, the analysis display mode provides a tabular display of user-selected parameters as they change over time. One or more of the parameters can be selected as "triggers" so that only events in which the "trigger" parameter changes are displayed.

This mode is the most powerful capability that ACSESVIEW™ has to offer!

