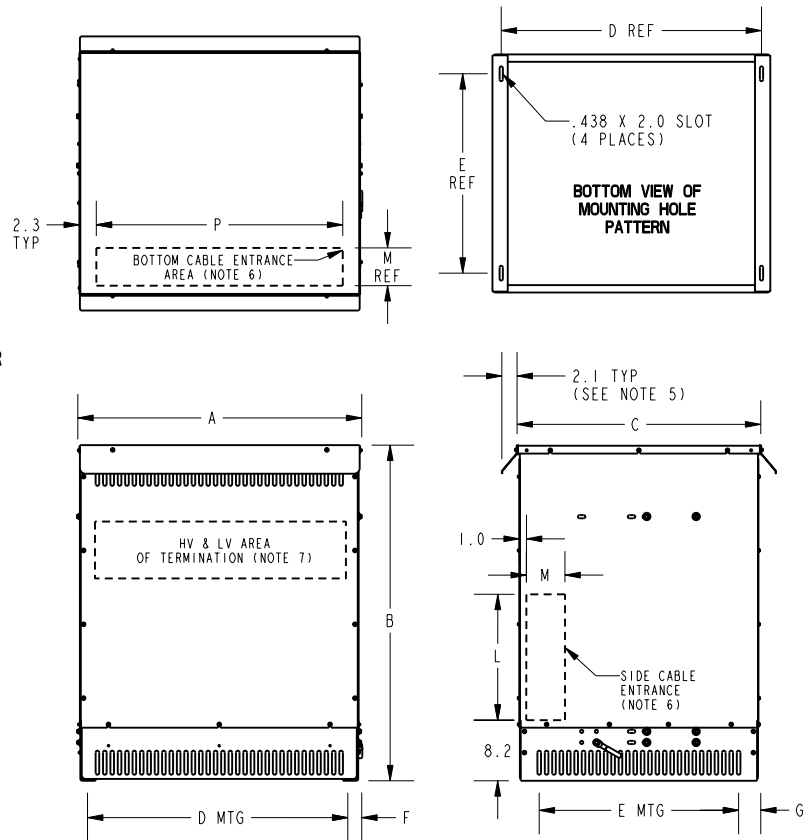


# SIEMENS

## DRY TYPE TRANSFORMERS

### NOTES:

1. ALL UNITS ARE UL LISTED AND ARE DESIGNED IN ACCORDANCE WITH ANSI C89.2 AND NEMA ST-20 STANDARDS.
2. THESE TRANSFORMERS UTILIZE A UL RECOGNIZED 220°C INSULATION SYSTEM. TEMPERATURE RISE AS INDICATED IN THE TABLE.
3. TRANSFORMERS ARE DESIGNED FOR FLOOR MOUNTING.
4. TRANSFORMERS ARE DRY TYPE, CLASS AA, WITH VENTILATED ENCLOSURES FOR INDOOR USE. OPTIONAL WEATHER-PROOFING KITS ARE AVAILABLE TO ADAPT THE UNIT FOR TYPE 3R OUTDOOR USE WITHOUT VOIDING THE WARRANTY.
5. APPLICABLE WHEN OPTIONAL RAINSHIELDS ARE INSTALLED. RAINSHIELDS ARE SHIPPED IN WEATHER-PROOFING KITS FOR FIELD INSTALLATION.
6. CABLE ENTRANCE SHOULD BE THROUGH THE SIDE AND/OR BOTTOM ENCLOSURE PANELS ONLY. CABLE ENTRANCE OUTSIDE OF THIS AREA IS NOT RECOMMENDED.
7. 0.563" DIA HOLES ARE PROVIDED FOR CUSTOMER TERMINATION.
8. FOR LIFTING, OTHER THAN WITH A FORK TRUCK, REMOVE TOP COVER AND USE 1" DIAMETER HOLES IN THE TOP CORE CLAMPS.
9. PAINT COLOR IS ANSI #61 GRAY.
10. 6" MINIMUM CLEARANCE IS REQUIRED FROM ALL WALLS.



ITEM	REF. KVA	HP	dB LEVEL	TEMP RISE °C	NET WT. LBS.		DIMENSIONS IN INCHES									
					AL	CU	A	B	C	D	E	F	G	L	M	P
1	175	150	55	150	1590	1700	38.5	45.5	33.6	35.2	27.0	1.7	3.3	17.0	5.2	33.3
2	220	200	55	150	1590	1700	38.5	45.5	33.6	35.2	27.0	1.7	3.3	17.0	5.2	33.3

ITEM	KVA	QTY.	CATALOG NO.	VOLTAGE		TAPS
				PRIMARY	SECONDARY	

**DRAWING**

APPROVAL

RECORD

OTHER

CUST.	UNLESS OTHERWISE SPECIFIED DIMENSIONS ARE IN INCHES DO NOT SCALE DRAWING TOLERANCES:		Confidential - Property of <b>Siemens Industry, Inc.</b> Building Technologies Division			
JOB	XX ± 0.02		<b>GENERAL PURPOSE VENTED TRANSFORMERS MOTOR DRIVE ISOLATION THREE-PHASE, 600 VOLT CLASS, 60 HZ. ( 175 - 220 KVA - AL OR CU WINDINGS )</b>			
P.O.	XXX ± 0.005					
TIE	ANGULAR ± 2°	THIRD ANGLE PROJ.	SIZE	FSCM NO.	DWG NO.	REV.
S.O.	APVD	DATE	A	FILE:	G-919-D	3
			SCALE	SHEET	1 OF 1	