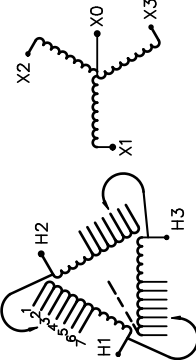



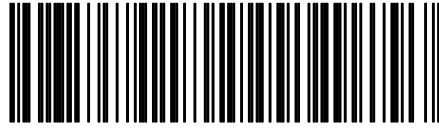
REVISION	DATE	BY	DATE	BY
			16/02/24	PP

Confidential - Property of
Siemens Industry, Inc.

CUSTOMER	
ORDER NO.	DWG. NO.
	3F3Y300D16CC
	SH 1 OF 2

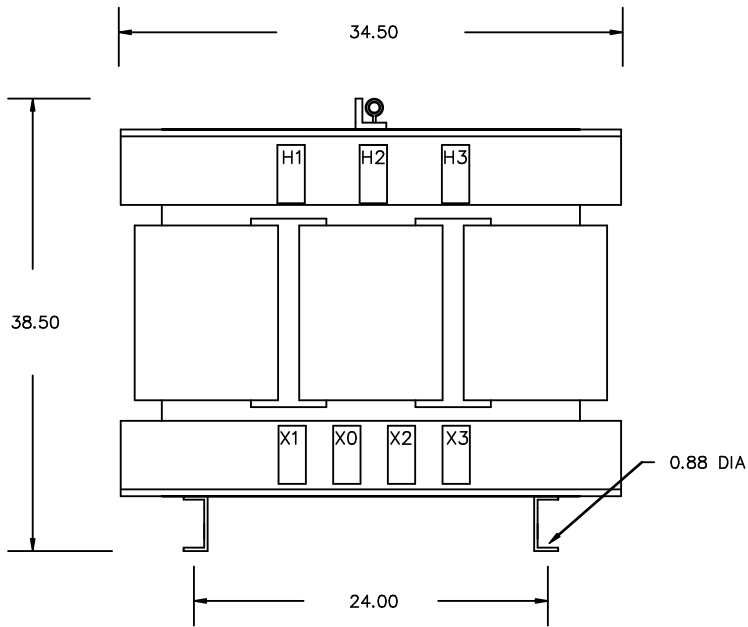
SIEMENS

CATALOG NO. 3F3Y300D16CC SERIAL NO. SERIES H 300 kVA 60 Hz 3 PHASE 4.7 % IMP AT 170 °C			
150 °C RISE 220 °C TEMP CLASS PRIMARY (H1 H2 H3) SECONDARY(X0 X1 X2 X3)	30 °C AVG. AMBIENT 40 °C MAX. AMBIENT 480V V 10 kV BIL 208Y/120V V 10 kV BIL	VOLTS CONNECT 504 492 480 468 456 444 432	1 2 3 4 5 6 7
WINDING MATERIAL AL ENCLOSURE TYPE - WEIGHT 1750 LBS ENERGY EFFICIENCY EXCEEDS CSA DOE 10 CFR PART 431:2016 C802.2-2012		TYPE J 	
SUITABLE FOR INDOOR OR OUTDOOR LOCATIONS BEFORE HANDLING, INSTALLING AND OPERATING, SEE INSTRUCTION MANUAL NEMA Class AN Dry Type Transformer		SEISMIC QUALIFICATIONS, FLOOR MOUNT ONLY IBC 2012/ASCE 7-10 SDS<=2.0g z/h=1 Ip=1.5	
		Siemens Industry, Inc. Norcross, GA	

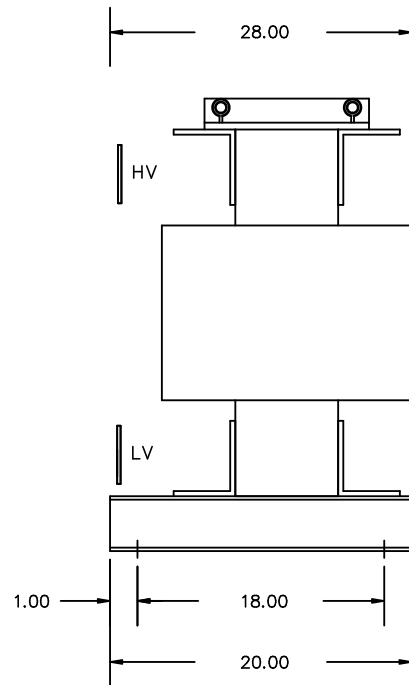


3F3Y300D16CC

FRONT VIEW

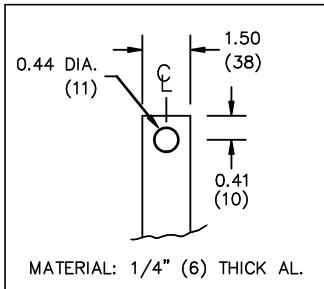


SIDE VIEW

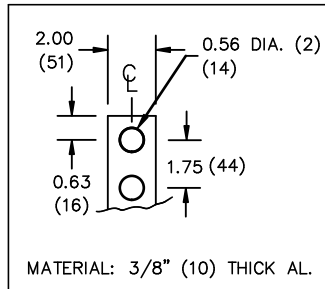


All Dimensions in inches

H.V.1. TERMINAL DETAIL



L.V.1. TERMINAL DETAIL



CUSTOMER NOTES:

- HV1 TERMINATED AT TOP FRONT
- LV1 TERMINATED AT BOTTOM FRONT
- DIMENSIONS ARE APPROXIMATE

Confidential – Property of
Siemens Industry, Inc.

REVISION	DATE	BY	DATE	BY
		DRAWN	16/02/24	PP
		CHEK'D		
		VERIF'D		

CUSTOMER	
ORDER NO.	DWG. NO. 3F3Y300D16CC
SH 2 OF 2	