

Nyt fra Procesautomation

Jens Norling Mathiassen



Agenda

SIMATIC ET 200iSP med PROFINET Interface
SIMATIC CN 4100
SIMATIC S7-4100
SIMATIC PCS neo v4.0



SIMATIC ET 200iSP PROFINET Interface with IM 152-1PN

New!

- PROFINET connection in Ex zone 1
- Up to 3000 m between controller and remote I/O station
- R1/ S2 / MRP redundancy for maximum availability
- Significant cost savings due to omission of PROFIBUS components

Optical interface with two SFP transceivers:

- 100 MBit bandwidth
- High Immunity to electromagnetic emissions
- Galvanic isolated
- Easily replaceable in case of breakdown



**SIMATIC ET 200iSP
with PROFINET**

Mounting on existing TM-IM

Easy replacement and upgrade of brownfield installations

First release with extensive certification scope for maximum market access

- ATEX / IECEx
- UKCA
- cULus haz.loc.
- UL IMMETRO

Support of Failsafe I/O Modules (up to SIL3)



System precondition: As of Version SIMATIC PCS 7 V9.1 SP 2 Update Collection 1, SIMATIC PCS neo V4.0, and TIA Portal V18

SIEMENS

Seamless migration from PROFIBUS to PROFINET

Migration of a SIMATIC ET 200iSP in a PROFINET network

1

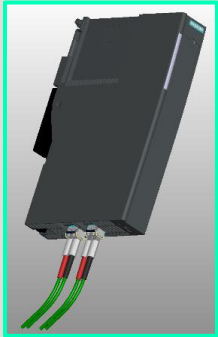
Simply replace the PROFIBUS DP interface module with the PROFINET interface module¹

2


The existing terminal module can remain unchanged

3

I/O modules of the SIMATIC ET 200iSP station can remain unchanged²



Fast and simple migration within minutes!



Value



SIEMENS

SIMATIC CN 4100 Many protocols – one solution

**Reduces communication load on the controllers
SIMATIC AS 410-5H & SIMATIC S7-4100**

Support multiple protocols as central communication system₁

- Enables singular MODBUS/TCP connections
- Enables singular OPC UA connections on AS-Level

**The answer to maintain several different communication libs
from various sources**

- All communication libraries are included in SIMATIC PCS neo/PCS 7 main delivery



SIMATIC CN 4100

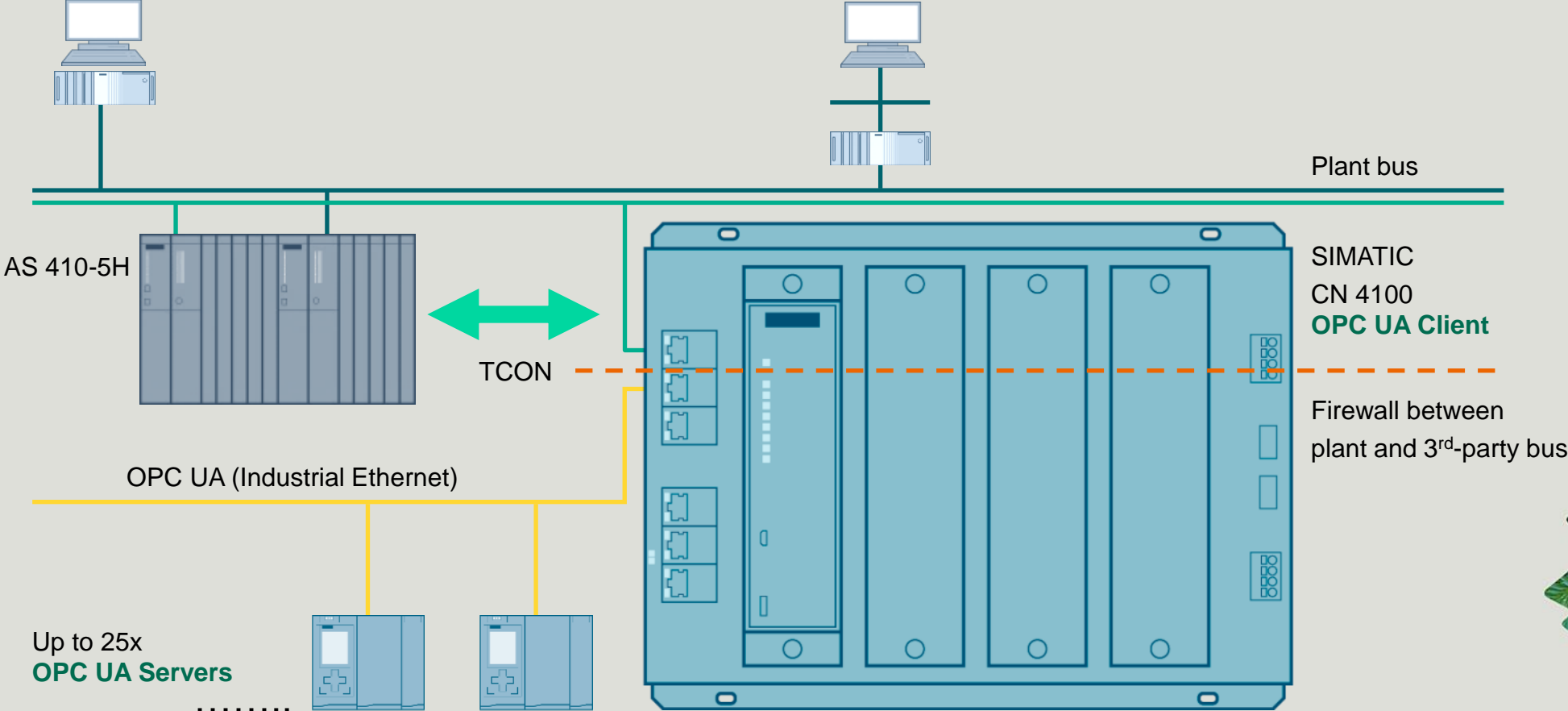


SIEMENS

OPC UA use case – single configuration

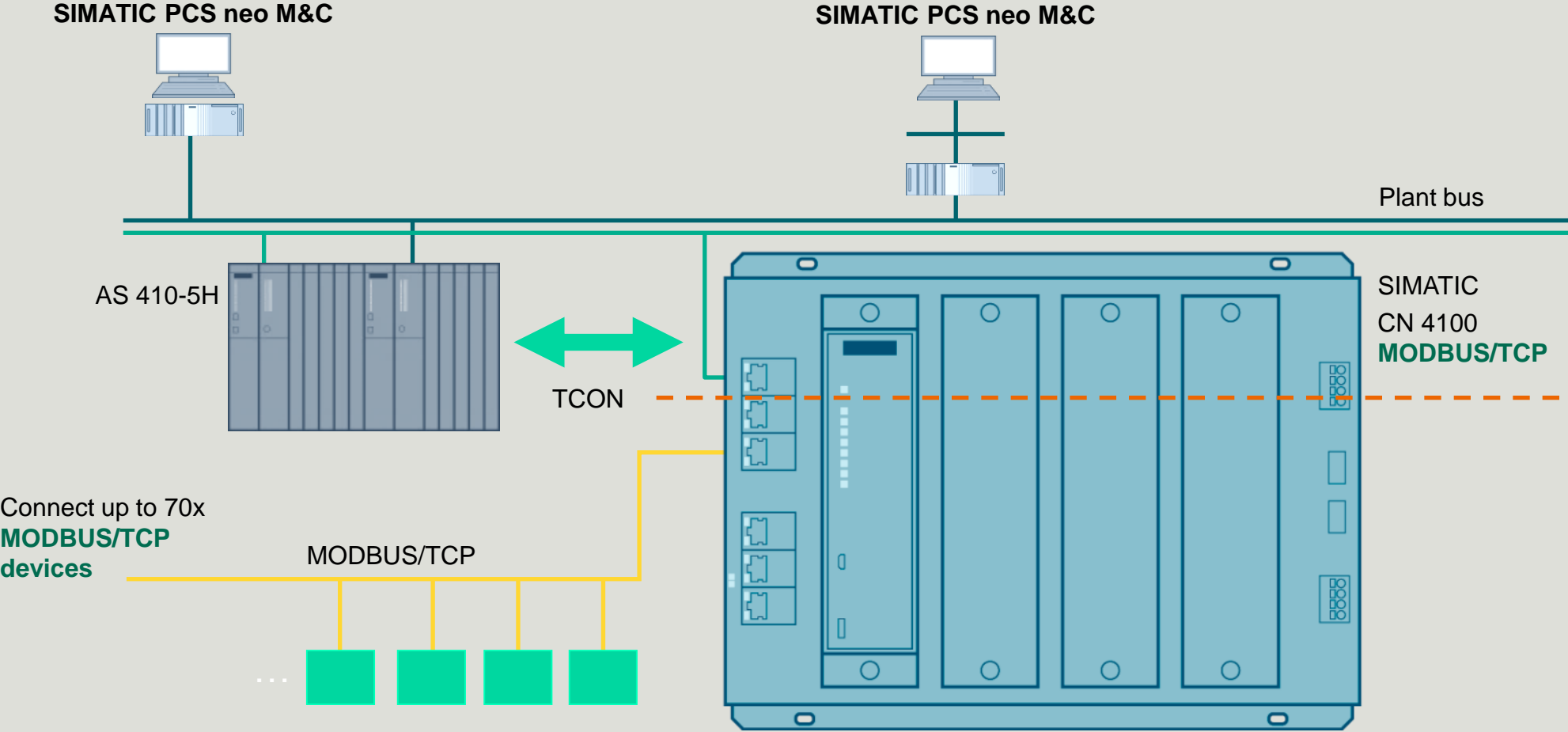
SIMATIC PCS neo Monitoring & Control (M&C)

SIMATIC PCS neo M&C



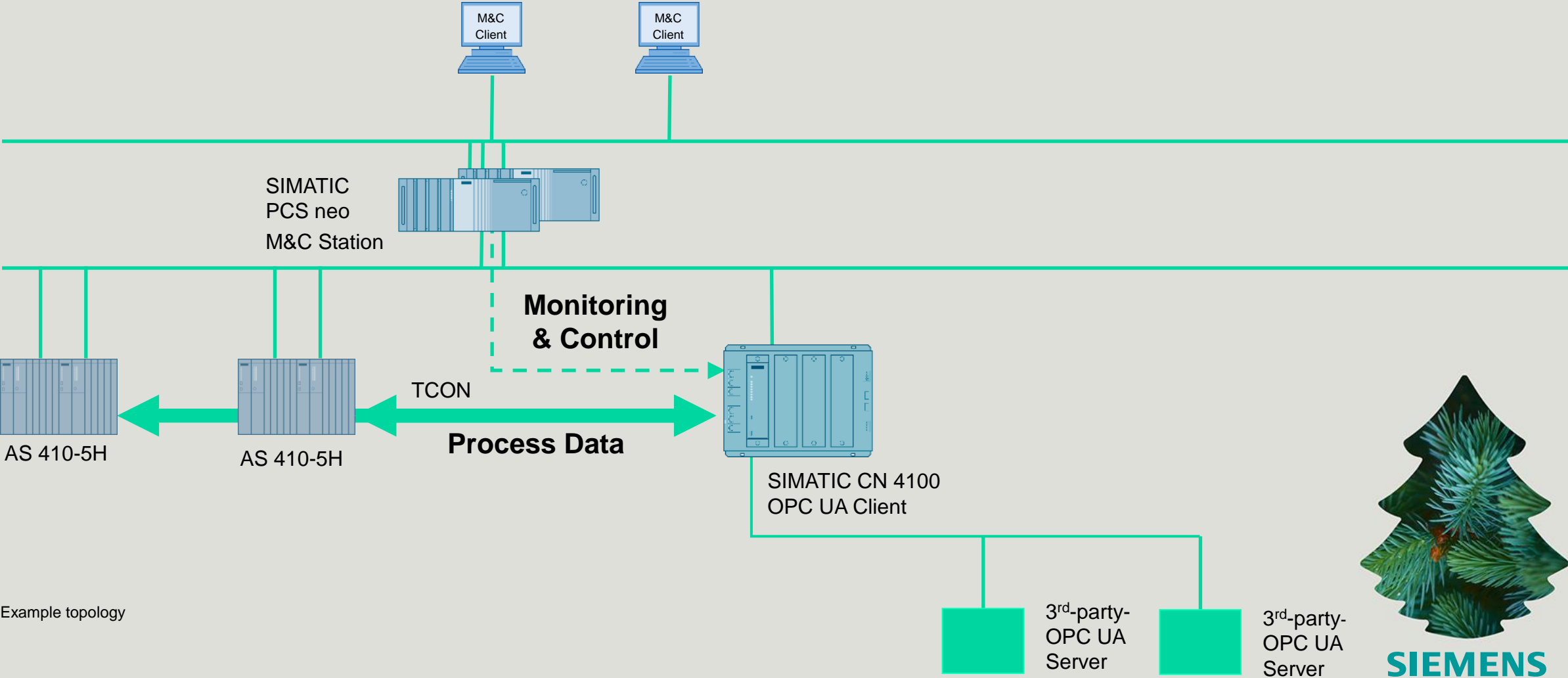
SIEMENS

MODBUS/TCP use case – single configuration



SIEMENS

Use case to split HMI and control data with CN 4100



Example topology

The success of SIMATIC S7-400 continues with SIMATIC S7-4100

SIMATIC S7-4100

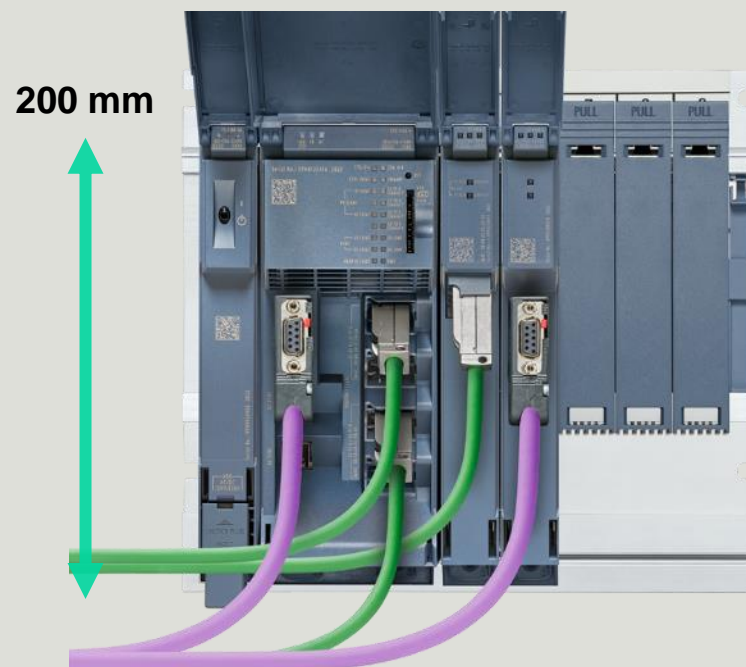
Made for SIMATIC PCS neo

Higher performance in compact design

Modularity taken to the next level

State-of-the-art technology

**Proven automation platform with a new design.
Stay in the lead.**

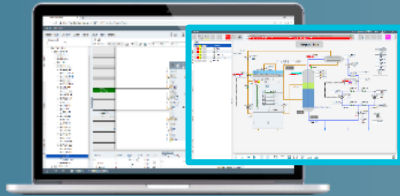


Redundant S7-4100
under development



SIEMENS

New controller for SIMATIC PCS neo



DCS system software

SIMATIC PCS neo V4.0 use the same application for both controllers

SIMATIC S7-400



SIMATIC S7-4100

- Modern compact modules (-30% height)
- Powerful backplane communication (supports exchange of CPs¹ at runtime)
- In total, up to 5 PROFIBUS CPs or PROFINET CPs pluggable
- Extended temperature range -25 °C – 70 °C
- 100% maintenance free (no backup battery)
- Very compact configurations without backplane
- Ultra low power consumption (~50% lower than SIMATIC S7-400)



SIEMENS

Ready for all upcoming challenges with SIMATIC PCS neo

SIMATIC PCS neo V4.0 (released Nov. 2022)

Ready for requirements of almost any industry (e.g. NAHMAT Library)

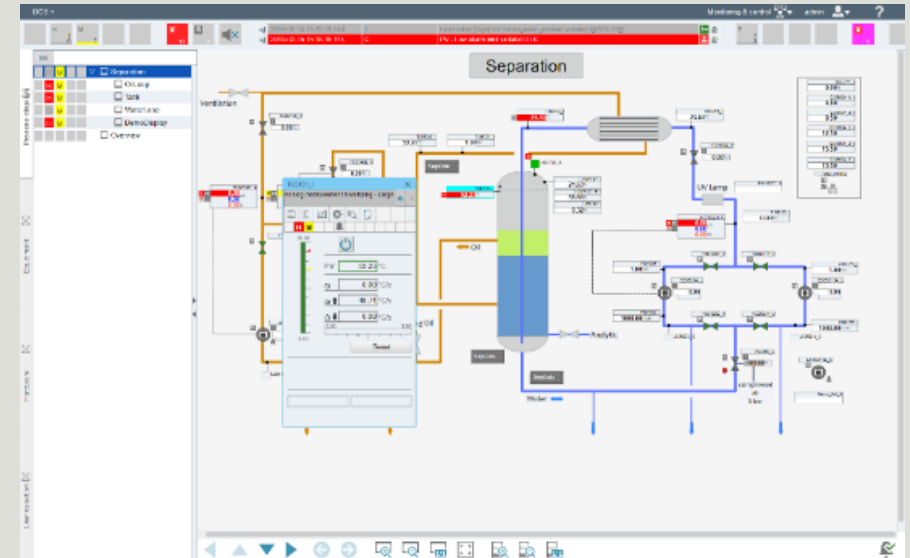
Stable and reliable for any project size (up to 64,000 POs)

More flexibility through modular production (MTP)

Efficient field device integration

Maximum connectivity with Communication Node SIMATIC CN 4100

Ready for the new controller generation SIMATIC S7-4100 designed for SIMATIC PCS neo



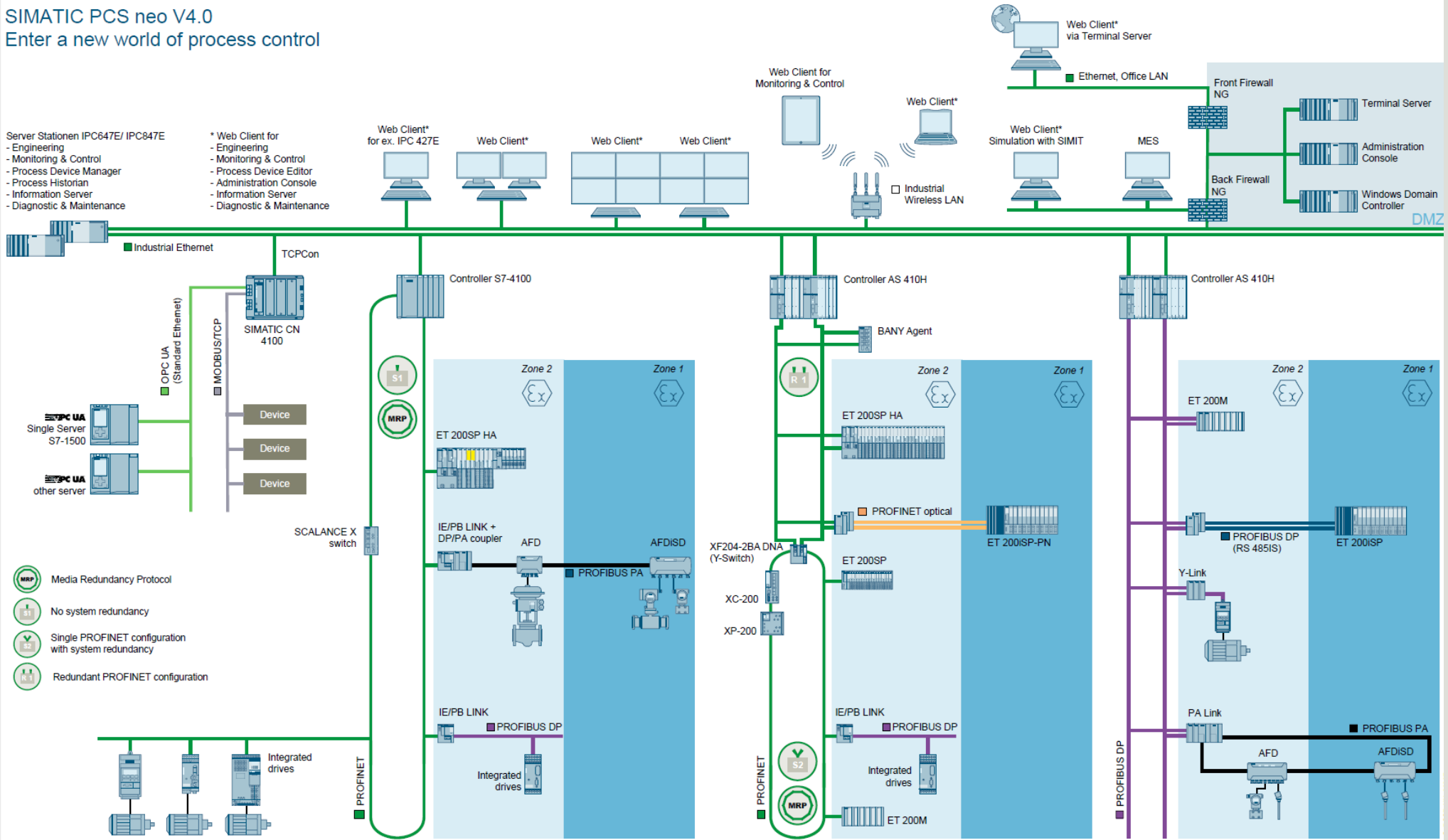
SIEMENS

Enter a new world of Process Control

SIMATIC PCS neo V4.0
 Enter a new world of process control

- Server Stationen IPC647E/ IPC847E
- Engineering
 - Monitoring & Control
 - Process Device Manager
 - Process Historian
 - Information Server
 - Diagnostic & Maintenance

- * Web Client for
- Engineering
 - Monitoring & Control
 - Process Device Editor
 - Administration Console
 - Information Server
 - Diagnostic & Maintenance



**Distributed Control
 System SIMATIC
 PCS neo**



SIEMENS