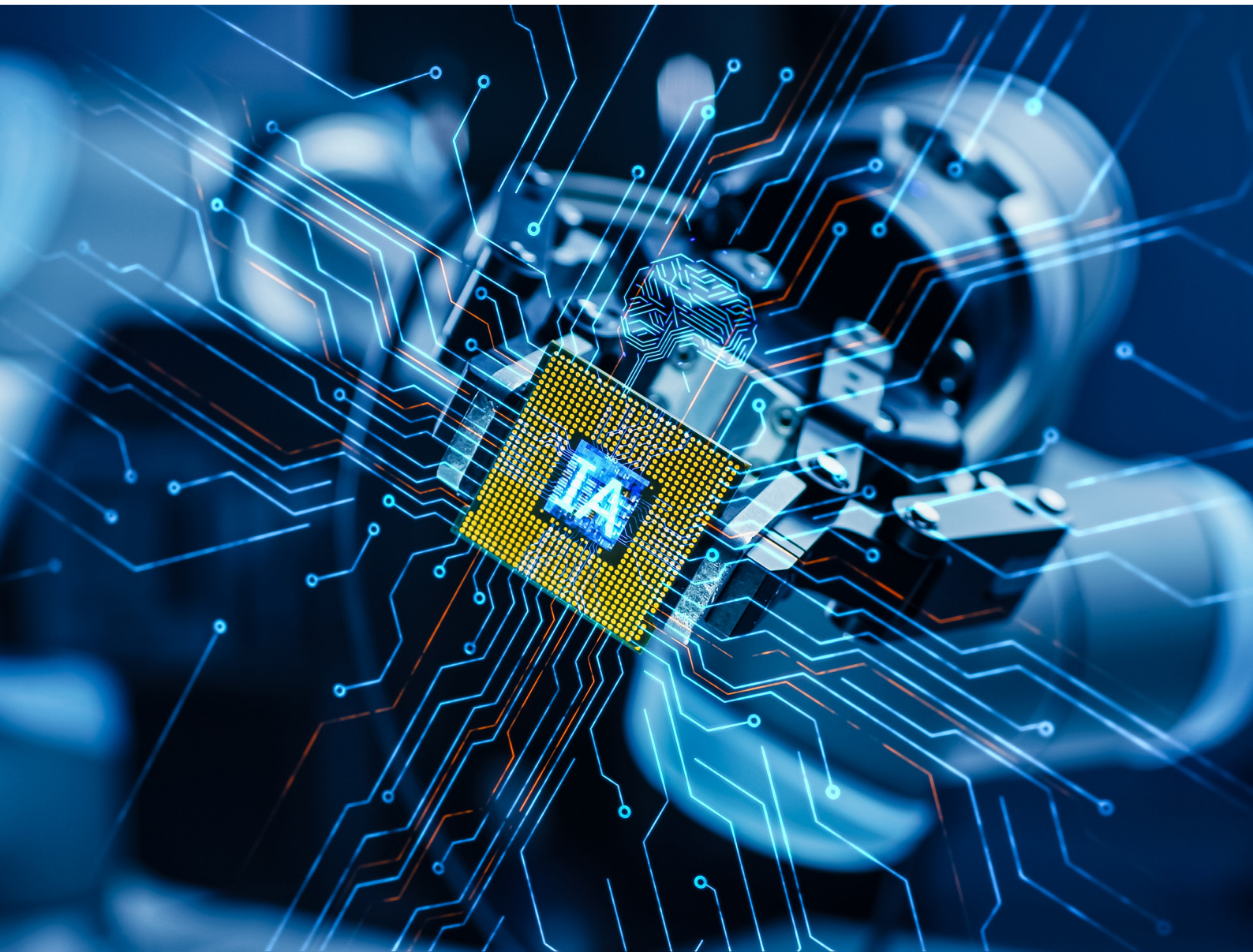




# Checklist for starting your AI project



<b>AI business case</b>	Yes/No	Priority	Measure
1. Are use cases prioritized according to achieving meaningful ROI?			
2. Can development costs be distributed across all potential use cases?			
3. Is a domain expert available for the project group?			
4. Is the AI software architecture aligned with the medium and long-term architecture roadmap?			
5. Are all suppliers involved known incl. their specific responsibilities and data IP?			
6. Are brownfield restrictions known? (Machine interfaces, proprietary formats, planned format changes)			
7. Are all technical gaps and technical scaling requirements clear?			
8. Have economic scenarios of mispredictions been considered?			

<b>Data requirements</b>	Yes/No	Priority	Measure
9. Is the data base sufficient to address the use case?			
10. Is an assessment of the data quality possible?			
11. Is it necessary to label the data and is the effort involved clearly defined?			
12. Are all time stamps comparable? Is there a difference between historical and current data?			
13. Can first pattern / anomaly findings be explained / interpreted?			

14. Are environmental influences on signal data known?			
15. Is the signal expressiveness sufficient?			
16. Is the scalability / transfer to analog use cases considered?			
17. Is internationalization / multilanguage data relevant?			

<b>Data modelling</b>	Yes/No	Priority	Measure
18. Are the data requirements adequately met to enable the development of physically motivated data combinations?			
19. Is a preselection of most suitable ML methods possible?			
20. Have strategies against changes to data source interfaces been implemented?			
21. Is the model capable to distinguish between anomalies/errors and changes in the environmental parameters? (e.g. abrupt wear/breakage or change of machine parameters)?			
22. Is the goal of a generally valid, scalable model reachable?			
23. Is hyperparameter optimization or a reduction of essential parameters, without losing information, necessary?			

<b>AI deployment</b>	Yes/No	Priority	Measure
24. Is the IT process for AI suppliers defined?			
25. Can suppliers be granted access to the internal solution architect network?			

26. Can relevant experience from other projects be shared?			
27. Are synchronized roadmaps available?			
28. Could alternative component arrangements, licensing strategies, and collaboration with complementary suppliers offer potential benefits?			
29. Does a set-up of an offline testing environment exist?			

<b>Operations &amp; Maintenance</b>	Yes/No	Priority	Measure
30. Is there a long-term concept for the use of the monitoring software?			
31. Can the solution maintenance costs be estimated?			
32. Can all relevant system sources be integrated? (MES, order, logistics, recipes, material quality checks,..)			
33. Is the respective effect of an erroneous prediction/ statement in the system world traceable?			

## Talk to our AI experts!



**Boris Zubert**

Team Lead Industrial AI solutions  
 E-Mail: [boris.zubert@inpro.de](mailto:boris.zubert@inpro.de)