



SIEMENS

Modernization made Easy

SIMATIC WinCC TagConverter

Step-by-step guide for importing 3rd party PLC tags into Siemens HMI Software, saving you engineering time and preserving your data.



Digital Factory

HMI Panel Replacement Made Easy with SIMATIC WinCC TagConverter



SIMATIC WinCC TagConverter allows 3rd party PLC tags to be easily imported into our WinCC programming software, saving you engineering time and preserving your data.

SIMATIC WinCC TagConverter

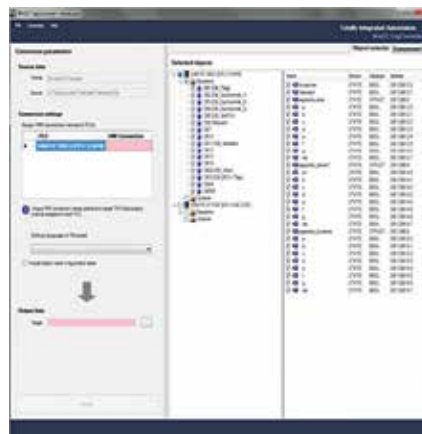
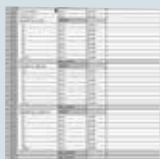
Schneider Electric® / Modicon®
ProWORX, Concept, Unity Pro XL

Allen-Bradley®
PLC-5®, SLC™ 500, and
ControlLogix®

Converts

- Counter
- Timer
- Alias Tags
- Multi-dimensional arrays
- UDTs

tags/symbols



Export
file

Import into
WinCC
(TIA Portal)

Converted file ready
to import into WinCC



tags/symbols



To download the tool, please visit:

[https://support.industry.siemens.com/cs/document/56078300/tagconverter-for-wincc-\(tia-portal\)?dti=0&lc=en-US](https://support.industry.siemens.com/cs/document/56078300/tagconverter-for-wincc-(tia-portal)?dti=0&lc=en-US)

Global carpet manufacturer switched to Siemens HMI Panels, while retaining non-Siemens controllers and realized the following benefits:

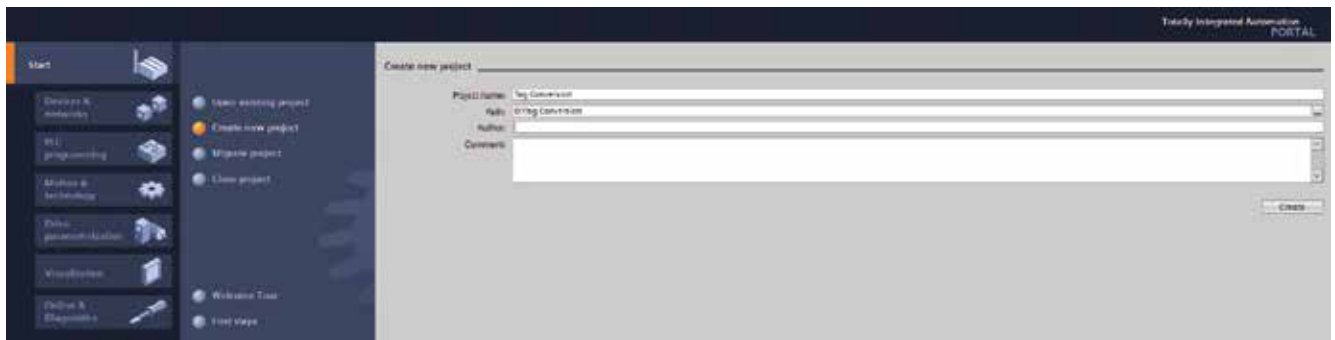
- Reduced costs due to standardization on Siemens HMI Panels while maintaining current controller base
- Reduced engineering time and preservation of data by not having to recreate tags through the use of the Siemens WinCC TagConverter
- Increased productivity due to remote connectivity functions via application web pages
- Maintain costs while benefiting from more advanced, innovative HMI feature

Step-by-Step guide for importing 3rd party PLC tags into Siemens HMI Software using the SIMATIC WinCC TagConverter

1 Open TIA Portal



2 Under the Start tab, click "Create new project" – Name your project and click "Create"

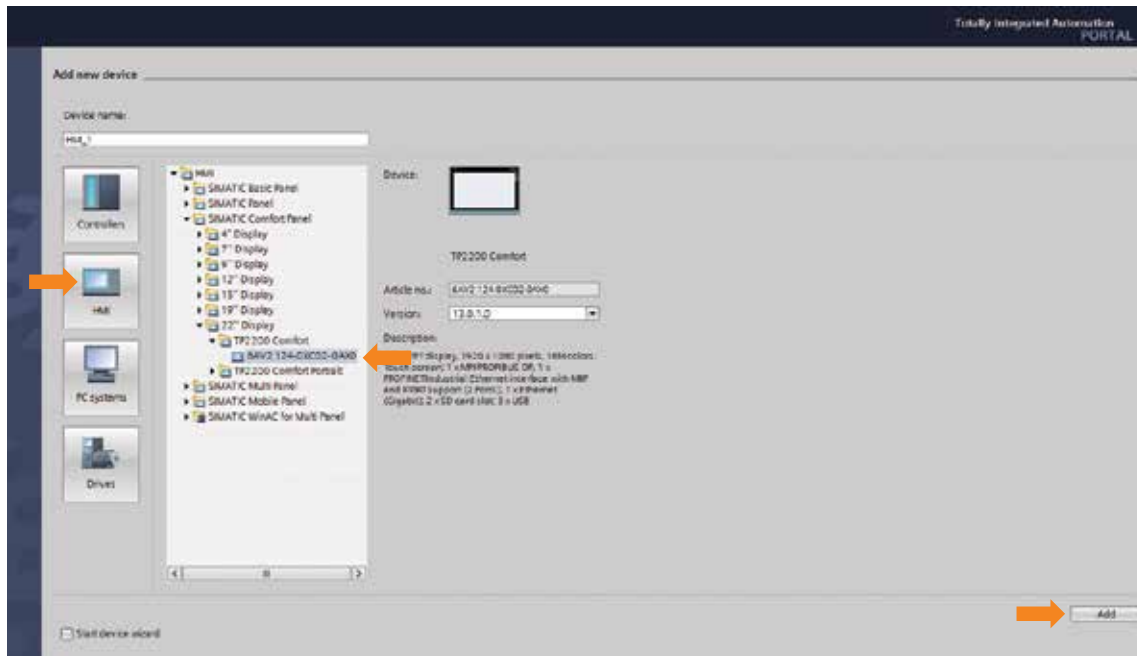


3 Select "Devices and networks" tab – Click "Add new device"



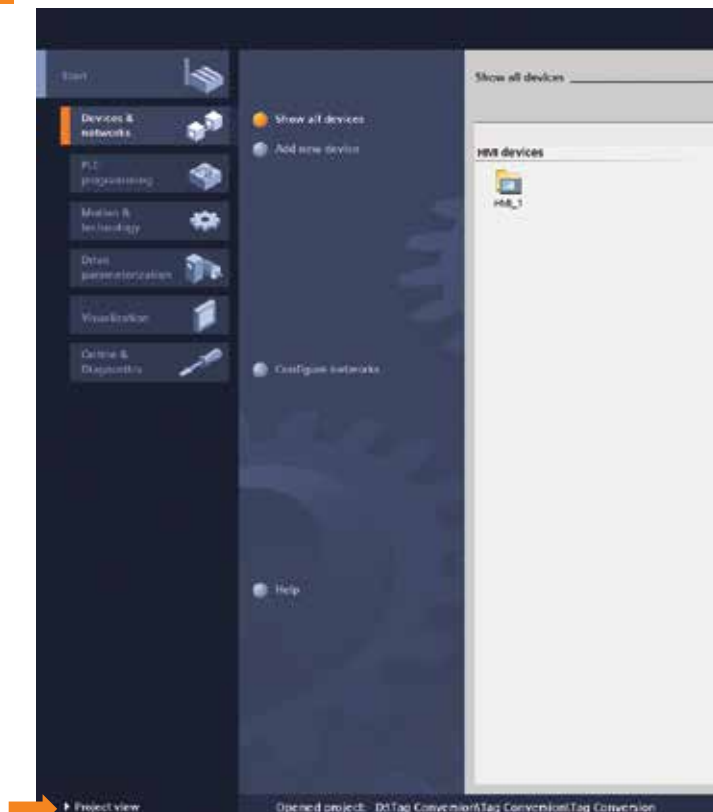
4

Select the HMI icon – Use the device tree to select the HMI device you want to use – Click “Add” in the bottom right hand corner



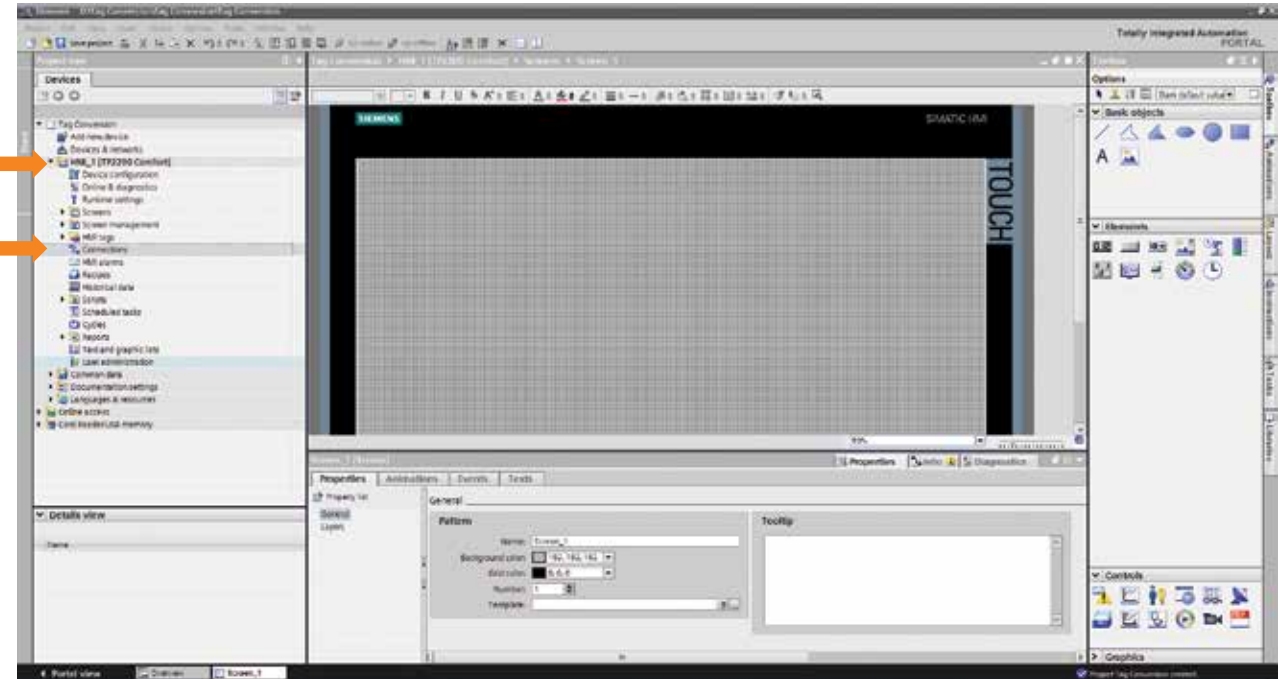
5

Once you've added the HMI, click "Project view"



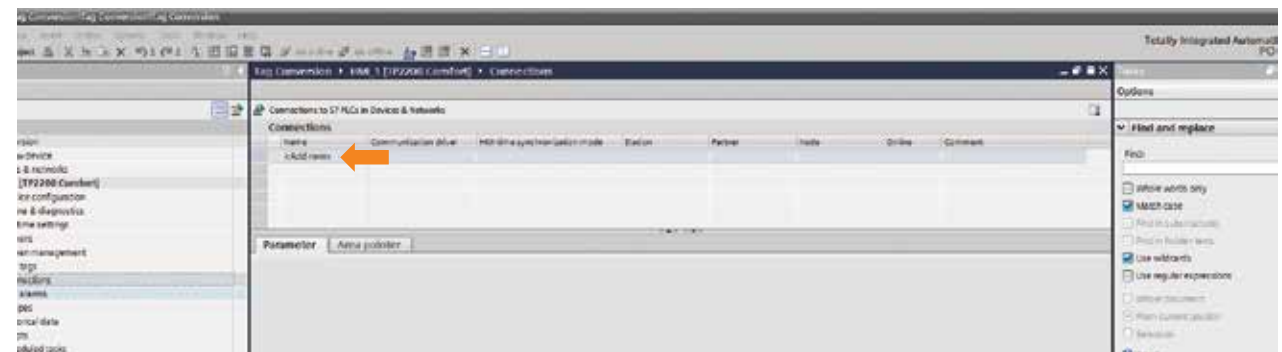
6

On the Project view screen, open the HMI device in the project tree – Double click “Connections”



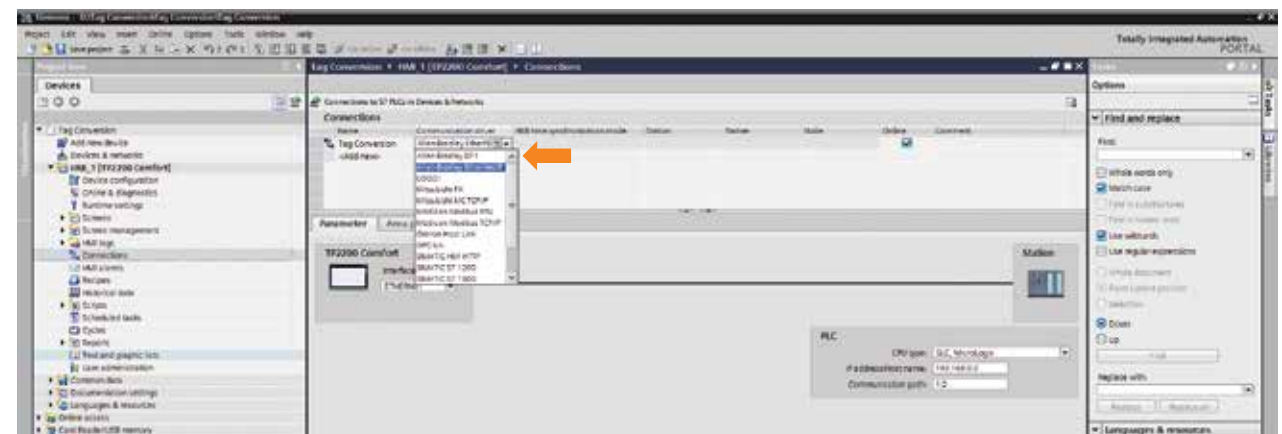
7

In the connections box, double click “Add new” and name your connection (Remember this as you will need it later)



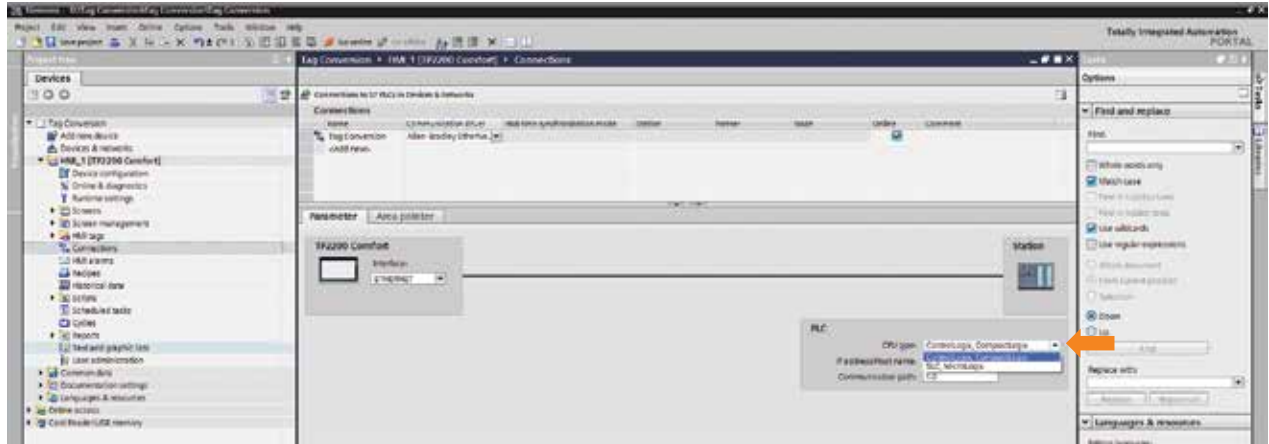
8

Then, use the drop down to select the communication driver (Note: All of these communications drivers are pre-installed, no add-ons necessary)



9

Select your CPU type from the drop down list



10

Set your IP address/Host name and Communication path



11

Your connection between the HMI and PLC are now established – Open the SIMATIC WinCC TagConverter

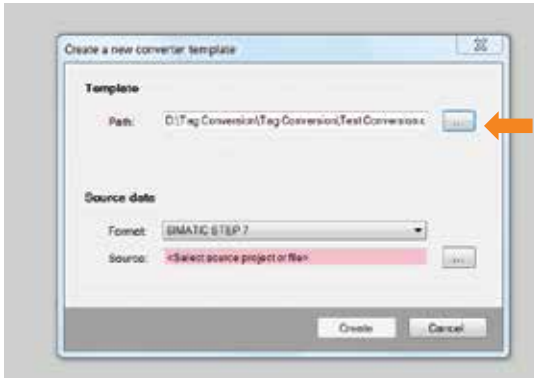


12

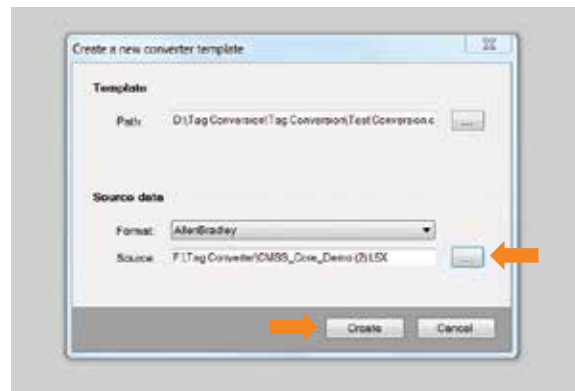
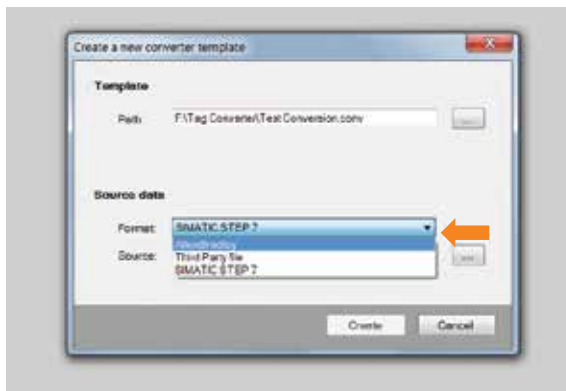
Click "Create a new converter template"



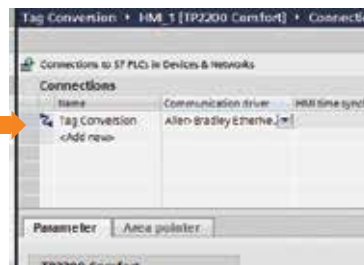
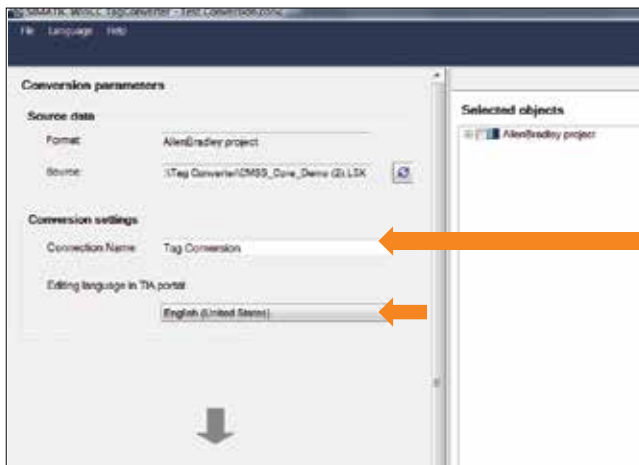
- 13 Choose your template path (This is where the conversion document will be saved in case you want to call it up in the future)



- 14 Select your file format from the drop down list – Then select your source file – Click “Create”



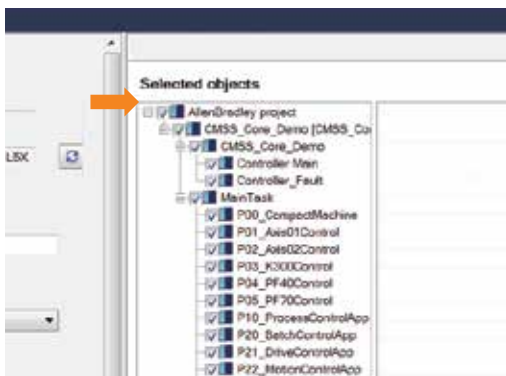
- 15 Add the Connection Name you set up in Portal (Make sure these match exactly) – Select your preferred editing language



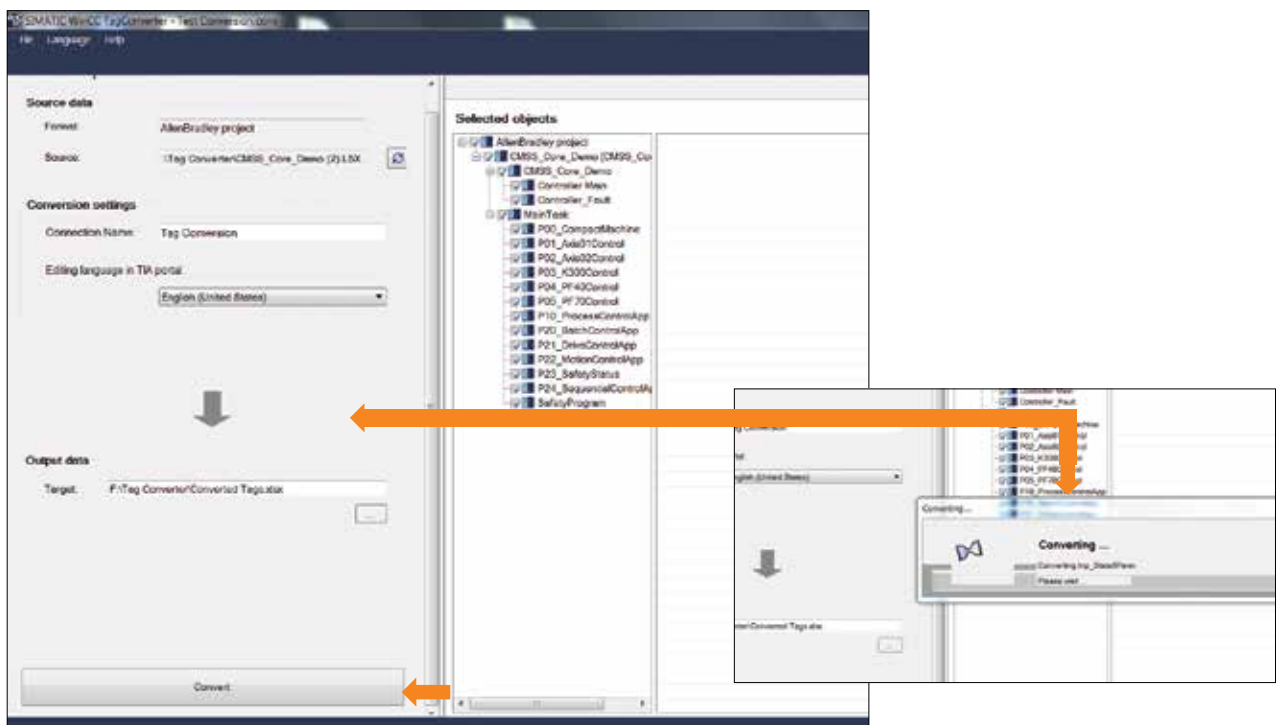
- 16 Select your output data file name (This will be the excel file you create with the converted tags)



- 17 Select what you want to convert (You can convert a complete project or select individual events and task)

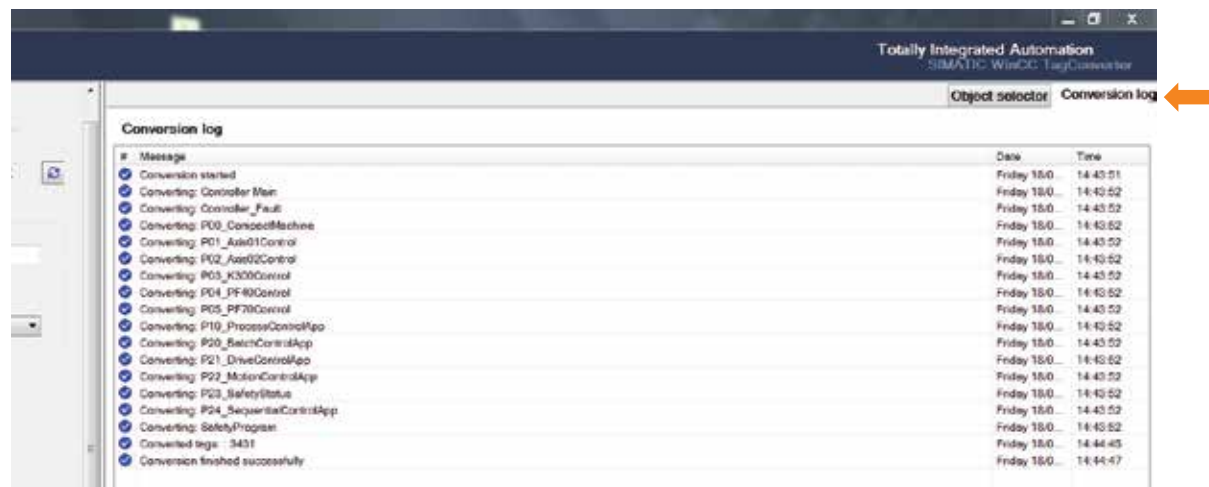


- 18 Once you have selected everything to convert, click "Convert"



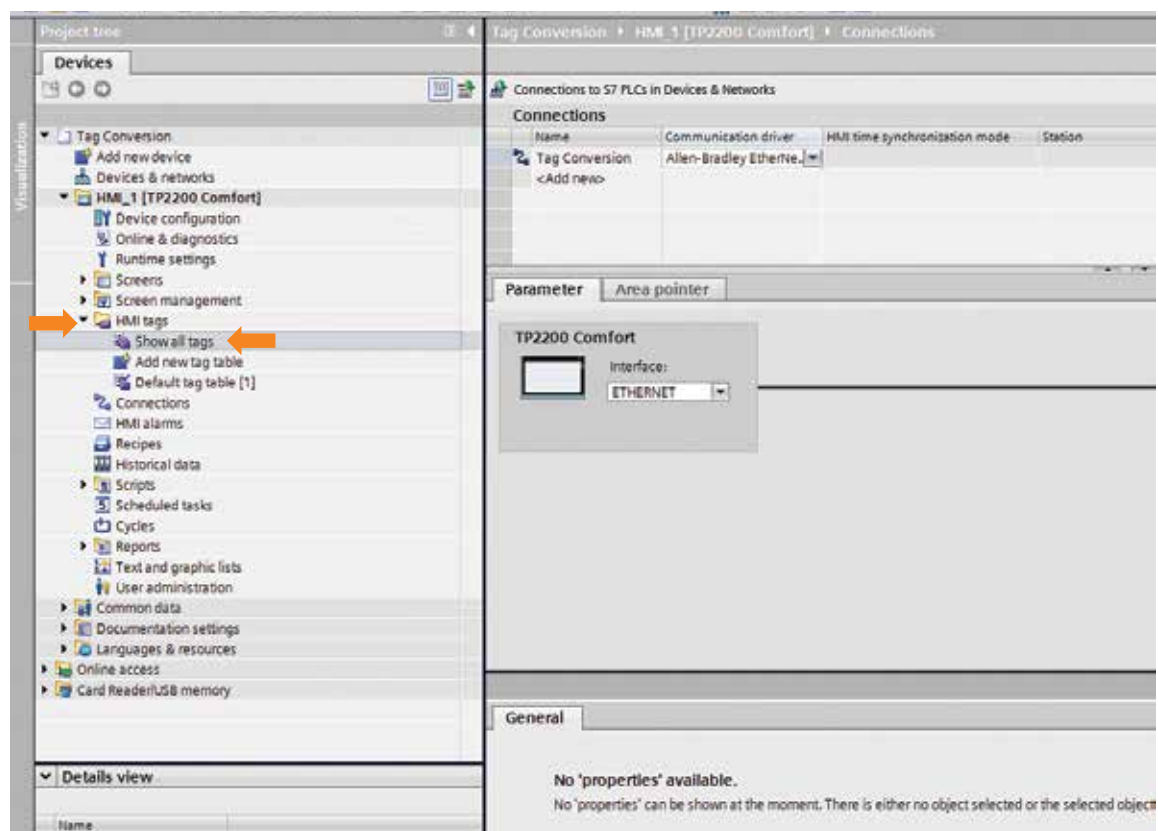
19

When the conversion is complete, click the “Conversion log” tab (Here you will see a summary of your tag conversion)



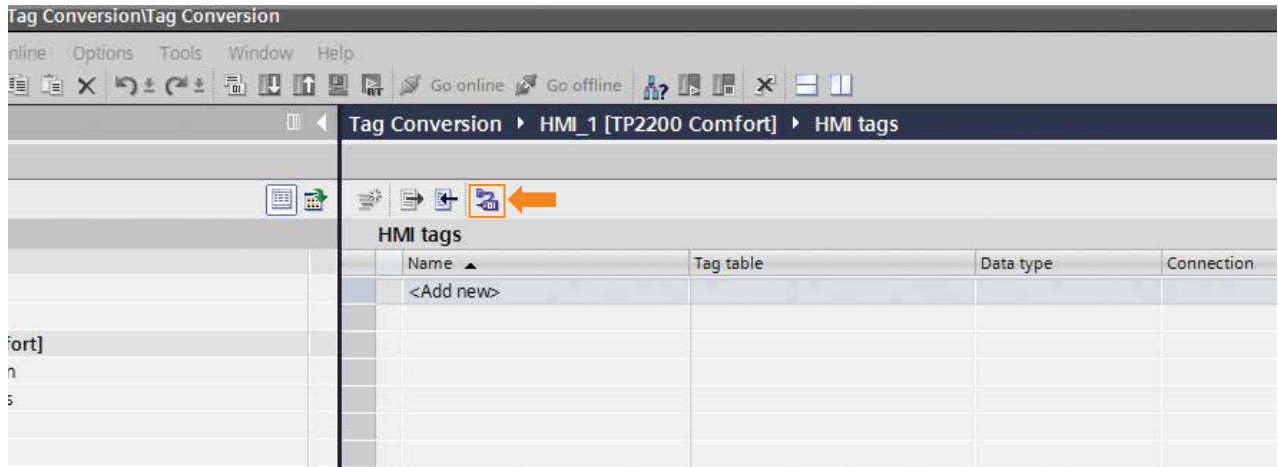
20

Go back to your TIA Portal project – Using the project tree, click “HMI tags” to expand the selection – Then double click “Show all tags”



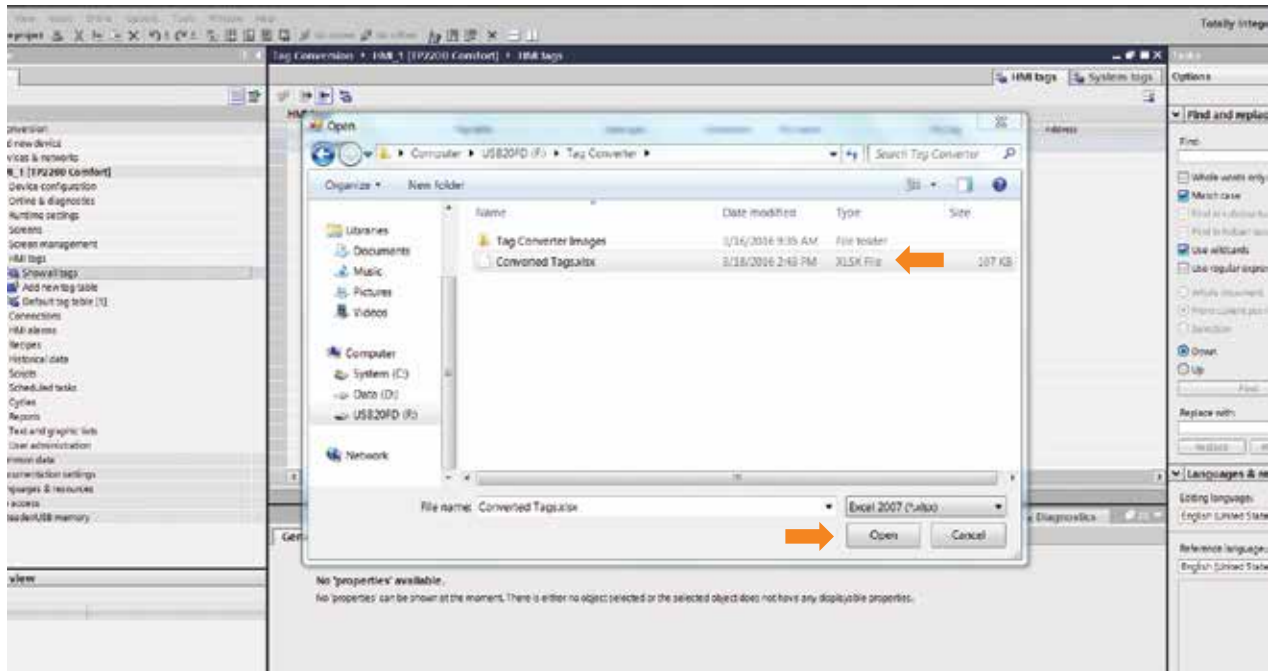
21

Click the import icon

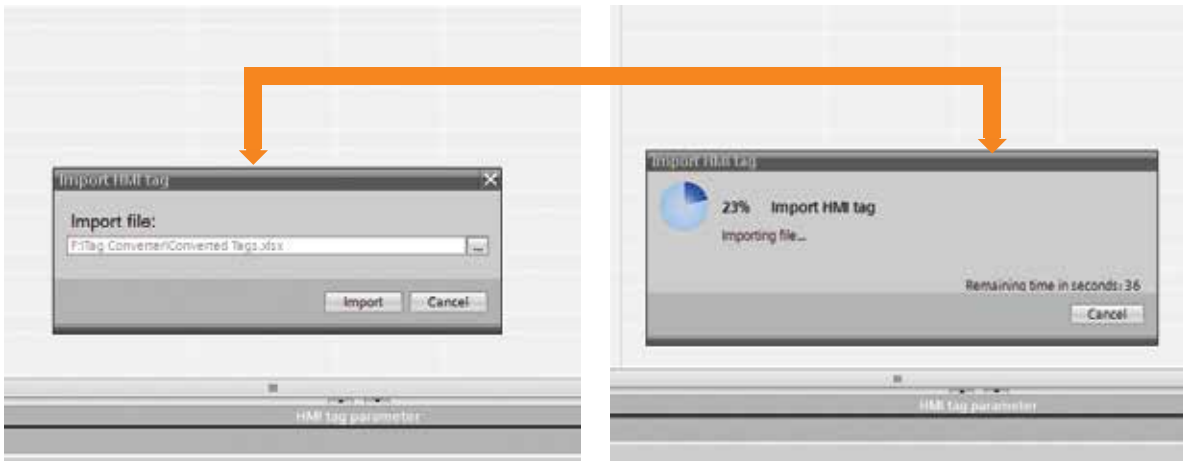


22

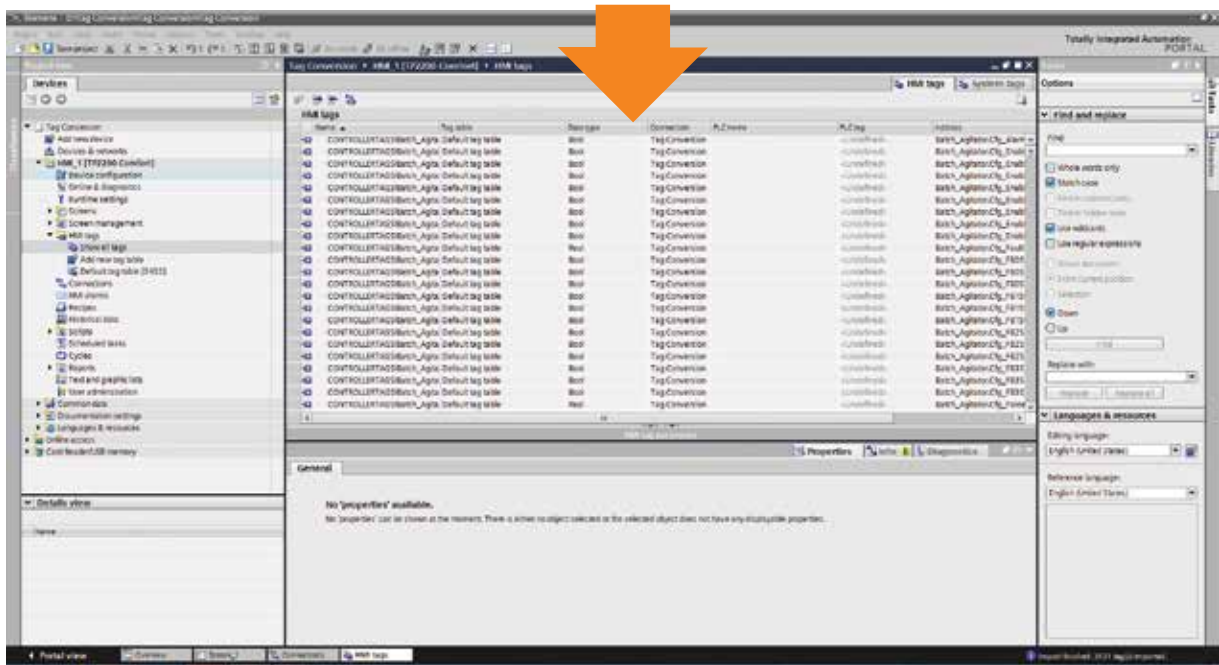
Select the excel file you created with your converted tags – Click “Open”



23



24



Contact Siemens today for a free consultation!

Locate a Siemens Migration Partner near you by calling 1-888-454-4704 or visiting the web:

- Siemens Sales Representative:
www.usa.siemens.com/saleslocator
- Siemens Distributor:
www.usa.siemens.com/distributorlocator
- Siemens Solution Partner:
www.usa.siemens.com/solutionpartnerlocator



Subject to changes and errors. The information given in this document only contains general descriptions and/or performance features which may not always specifically reflect those described, or which may undergo modification in the course of further development of the products. The requested performance features are binding only when they are expressly agreed upon in the concluded contract.

Published by
Siemens Industry, Inc. 2016.

Siemens Industry, Inc.
5300 Triangle Parkway
Norcross, GA 30092

For more information, please contact
our Customer Support Center.
Phone: 1-800-241-4453
E-mail: info.us@siemens.com

usa.siemens.com/hmi

Order No. HMBR-SMTIC-0316
Printed in U.S.A.
© 2016 Siemens Industry, Inc.