

Heavy Duty Double Throw Safety Switches

Type 3R (Outdoor)

Standards and Ratings

- UL Listed under file #E5239
- Meets UL98 for switches and UL50 for enclosures
- Suitable for use as Transfer Equipment on optional standby systems as defined by Article 702 of the NEC
- Meets NEMA Standard KS-1 for enclosed switches (Type HD)
- Meets NEC wire bending space requirements
- Rated 10,000 AIC ²
- Quick make and break mechanism
- Visible Blade, double break switching action
- Dual cover interlock
- Tangential knockouts
- Handle is padlockable in the OFF position

General Information

| Catalog Number | Volts | Amps | Description | Shipping Weight (lbs.) |
|----------------|-------|------|---------------------|------------------------|
| NFR451DTK | 600 | 30 | 4 Pole, Non-Fusible | 45 |
| NFR452DTK | 600 | 60 | | 45 |
| NFR453DTK | 600 | 100 | | 45 |

Horsepower Ratings ¹ - 600 Volts

| Catalog Number | 1 Phase, 480V AC | | | 3 Phase, 600V AC | | | 250V DC |
|----------------|------------------|------|------|------------------|------|------|----------|
| | 240V | 480V | 600V | 240V | 480V | 600V | |
| NFR451DTK | 3 | 7½ | 10 | 10 | 20 | 30 | 5 (Std) |
| NFR452DTK | 10 | 20 | 25 | 20 | 50 | 60 | 10 (Std) |
| NFR453DTK | 20 | 40 | 50 | 40 | 75 | 100 | 20 (Std) |

Accessories

| Catalog Number | Description |
|----------------|----------------------------------|
| DS100GK | Equipment Ground Kit |
| DS200EK1 | Auxiliary Switches (1-NO & 1-NC) |
| DS200EK2 | Auxiliary Switches (2-NO & 2-NC) |
| ECHR075 | 0.75" Type 3R Hub |
| ECHR100 | 1.00" Type 3R Hub |
| ECHR125 | 1.25" Type 3R Hub |
| ECHR150 | 1.50" Type 3R Hub |
| ECHR200 | 2.00" Type 3R Hub |

Mechanical Lug Wire Ranges (60/75°C, Cu/Al)

| Catalog Number | Description | Wire Range |
|----------------|-------------|-------------|
| NFR451DTK | Line, Load | #12-2 AWG |
| NFR452DTK | Line, Load | #14-2 AWG |
| NFR453DTK | Line, Load | #14-1/0 AWG |

¹ Standard horsepower ratings applies when non-time delay fuses are installed.

² Rated 100,000 AIC when protected by Class R fuses. Fuse ampere rating must not exceed switch ampere rating.

Product Specification Sheet H30.22

Answers for industry.

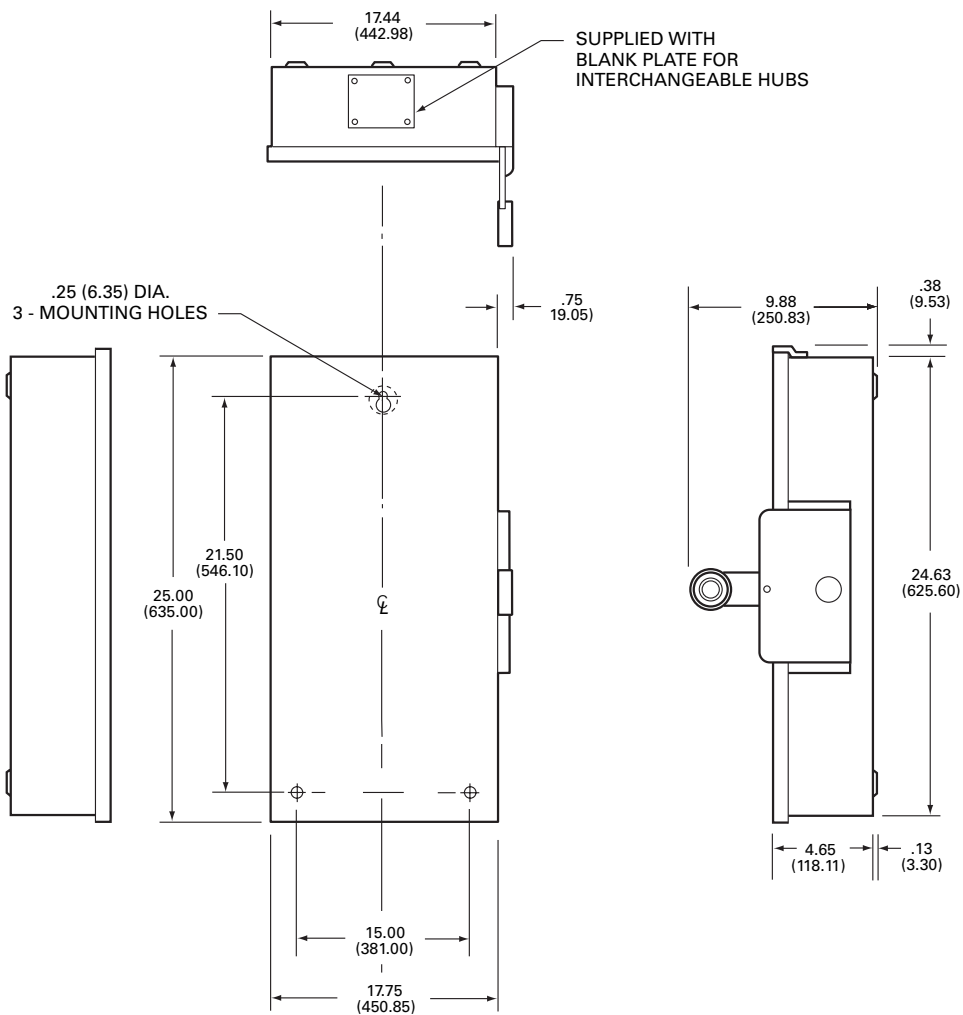
SIEMENS

Product Specification Sheet #H30.22 (page 2 of 2)

Compression Lugs

| Wire Size | Burndy | Thomas-Betts | |
|-----------|----------|--------------|---------|
| | CU Wire | CU Wire | AL Wire |
| 12-10 | YAV10 | — | — |
| 8 | YAV8C-L | 54104 | — |
| 6 | YAV6C-L1 | 54105 | — |
| 4 | YA4C-L | 54106 | 61112 |
| 2 | YA2C-L | 54107 | 61116 |
| 1 | — | — | 61122 |

Dimension Drawing



No knockouts in the enclosures.
 Dimensions shown in inches and millimeters ().
 Dimension shown accurate to $\pm \frac{1}{8}$ inch.