

SIEMENS

Ingenuity for life



Process Instrumentation

Siemens Ethernet/IP Wireless gateway

usa.siemens.com/mag

Overview

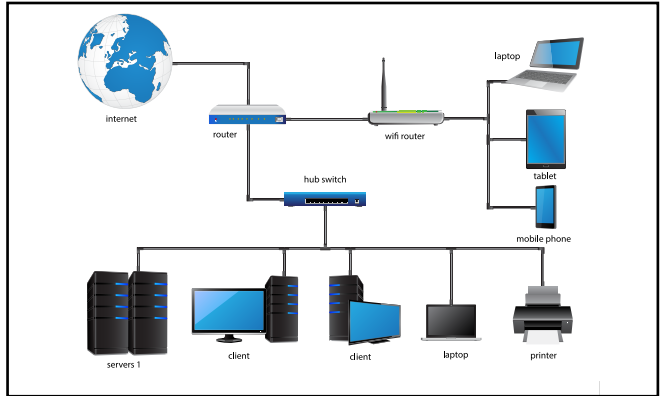
Siemens ethernet IP (EIP) wireless gateway provides a cost effective interface to Building Communications Management Systems. The Siemens gateway enables users to access a broader market by meeting specifications for EIP connectivity. The Siemens EIP wireless gateway dramatically improves time to market and remote site support for OEM field devices.

The EIP wireless gateway has the unique ability to act as a Wi-Fi access point. Users can directly connect their mobile device to the gateway without having to be on the facility's LAN or WAN to access the local applications.

Each gateway is delivered pre-configured for the customer specific requirements. No additional programming or mapping is necessary.



Backward and forward compatible with MAG 6000 transmitters.



EIP network

EIP Gateway Features and Benefits

- Multiple Connections:
 - Ethernet
 - RS-485 & RS-232
 - Wi-Fi
- Wi-Fi access point allows for direct connection from any mobile device without having to be on the facility's LAN or WAN to access the local applications
- BTL certified.
- On-board diagnostics allow easy troubleshooting for both serial and Ethernet communications.

Hardware Specifications

Communication

Serial (Galvanic Isolation): RS-485/RS-232
Baud: 9600, 19200, 34800, 57600, 76800, 115000
 Ethernet
 10/100BaseT
 MDIX
 DHCP

Environment

Operating Temperature: -4 to 158°F
Relative Humidity: 10-95% RH non-condensing

Other

On-board diagnostics
 DIN rail mount included

Construction

Dimensions (HxWxD)

4 x 1.1 x 2.7 inches

Weight: 0.4 lbs

Power Requirements

FPA-X34: 12-24 VDC
 Current draw @ 12V: 240 mA
 FPA-W44: 12-24 VDC, 24 VAC
 Current draw @ 12V: 240 mA

Approvals

CE and FCC Class B & C Part 15
 TUV Approved to UL 60950
 IC Canada
 RoHS Compliant
 PTCRB and CTIA

Wi-Fi 802.11 b/g/n

Frequency: 2.4 GHz

Channels: 1 to 11 (inclusive)

Antenna Type: SMA

Encryption: TKIP, WPA & AES

Ordering Information

- FPA-W34 (Wi-Fi): one serial port model, includes Wi-Fi antenna
- FPA-W44 (Wi-Fi): two serial port model, includes Wi-Fi Antenna (availability Q1 2018)

Siemens Industry, Inc.
 Process Industries and Drives
 100 Technology Drive
 Alpharetta, GA 30005
 1-800-365-8766

Subject to change without prior notice
 Order No.: PIFL-00118-0418
 All rights reserved
 Printed in USA
 © 2018 Siemens Industry, Inc.

Siemens Part Number - A6X30134659