



# Siemens Digital Business

## International Media Day

**Deep dive curated portfolio Siemens Mobility**  
Railigent X and Mobility Software Suite X  
Johannes Emmelheinz, Michael Frankenberg

# Challenges in the rail industry



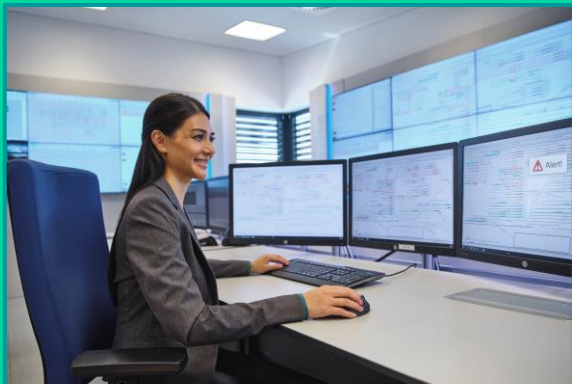
# Competitive passenger experience



# Balancing supply & demand



# Aging infrastructure & lifecycle cost



# Network & vehicle availability

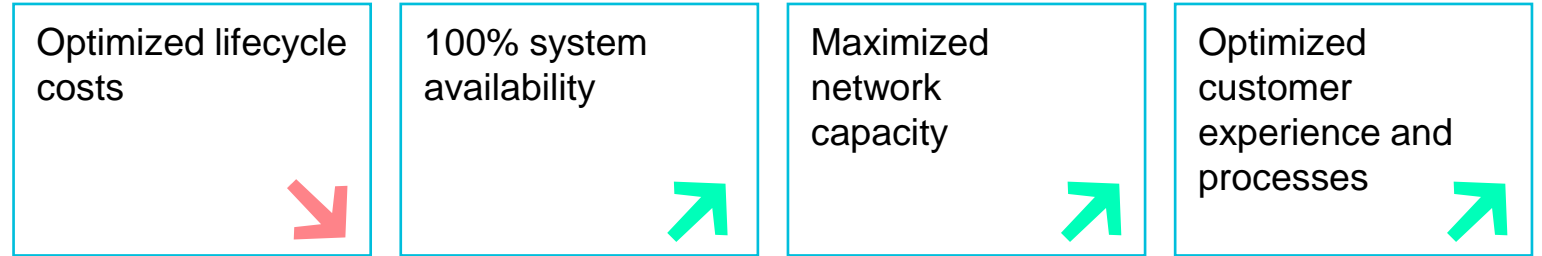


# Digitalization is the key lever to overcome rail industry challenges.

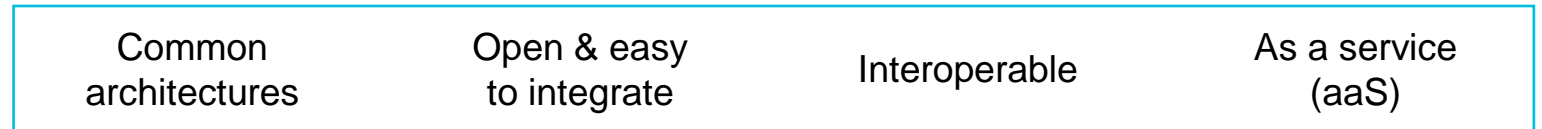
## Challenges in the rail industry

- Growing demand for train & network capacity
- Aging infrastructure and assets
- Maintenance interval optimization
- Operations & lifecycle costs reduction
- Legacy IT systems
- Cyber security threats
- Increased passenger expectations
- Solving the first / last mile

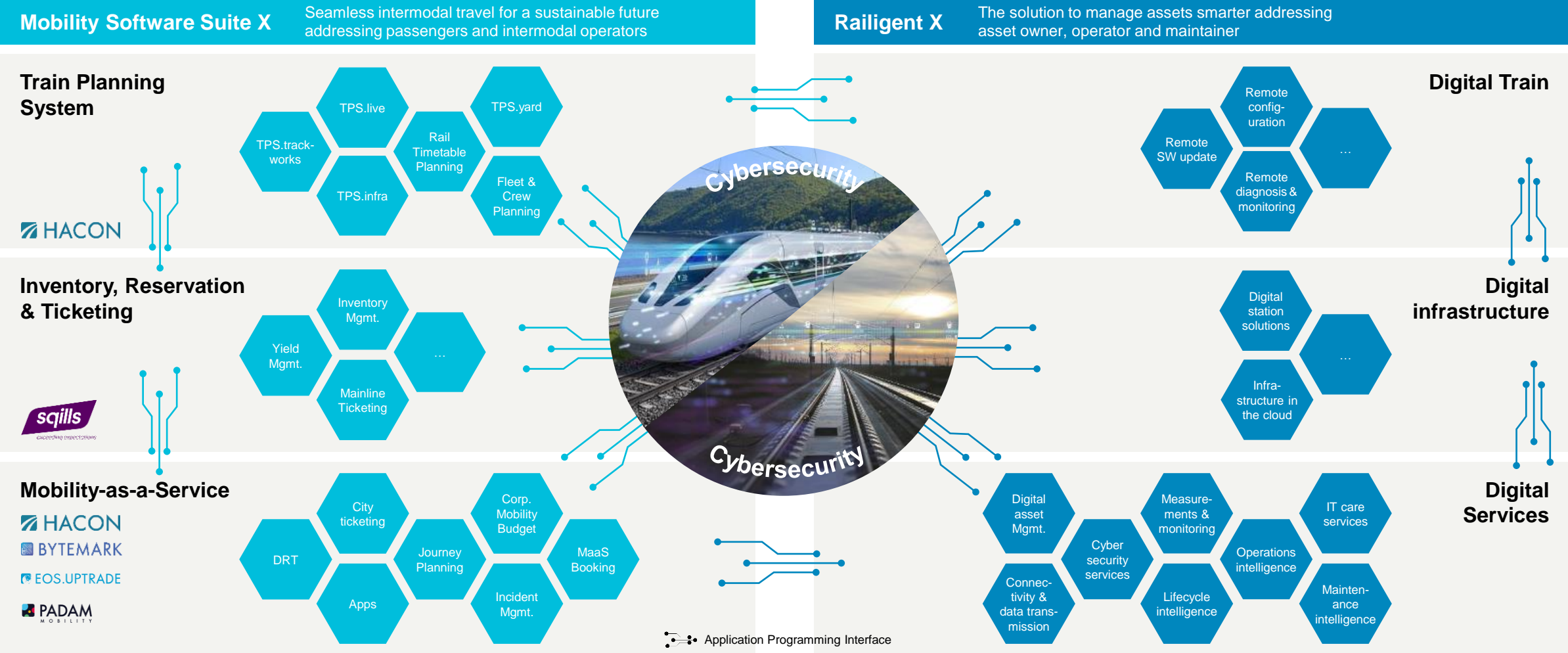
## Siemens Mobility's value promises



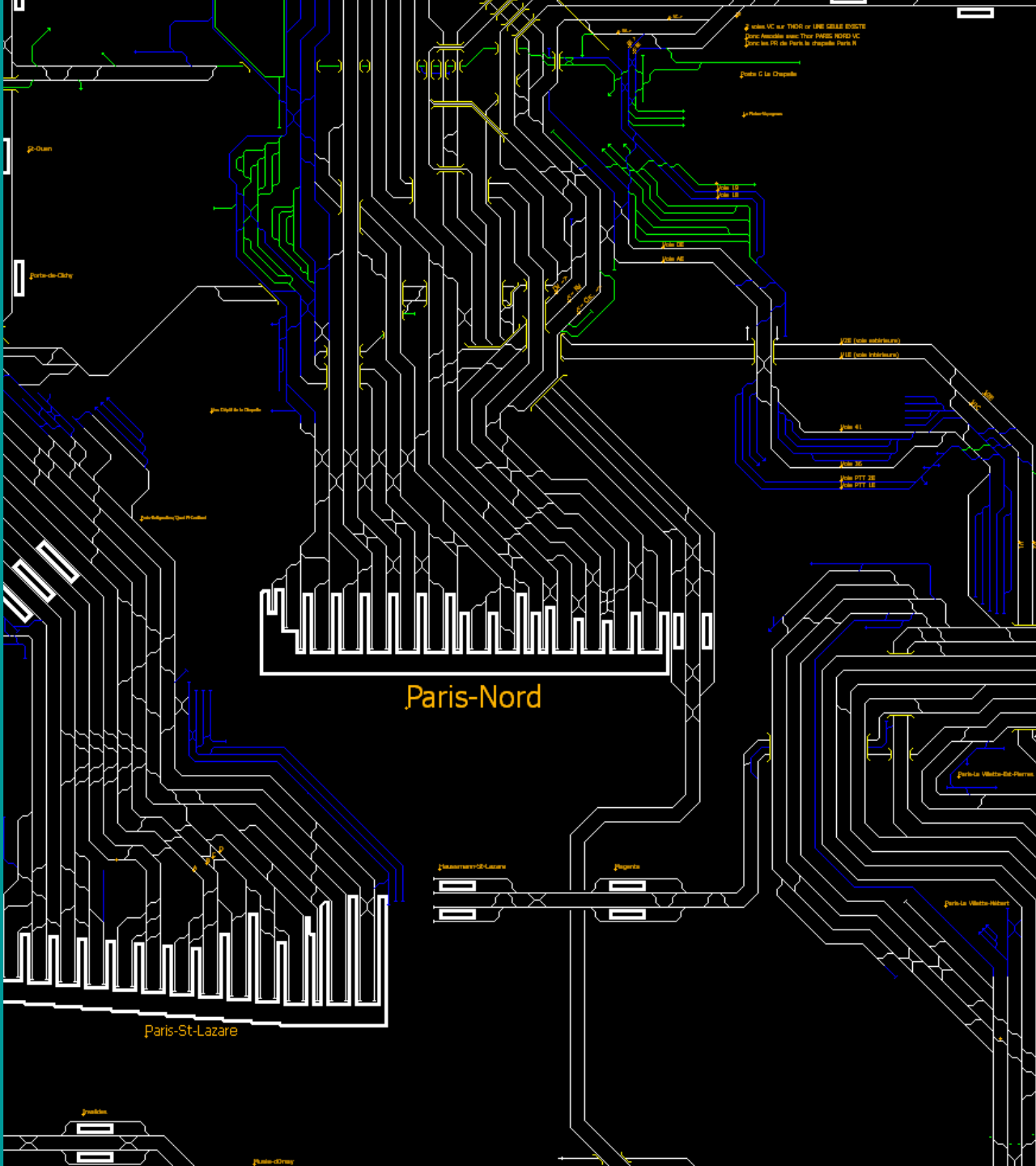
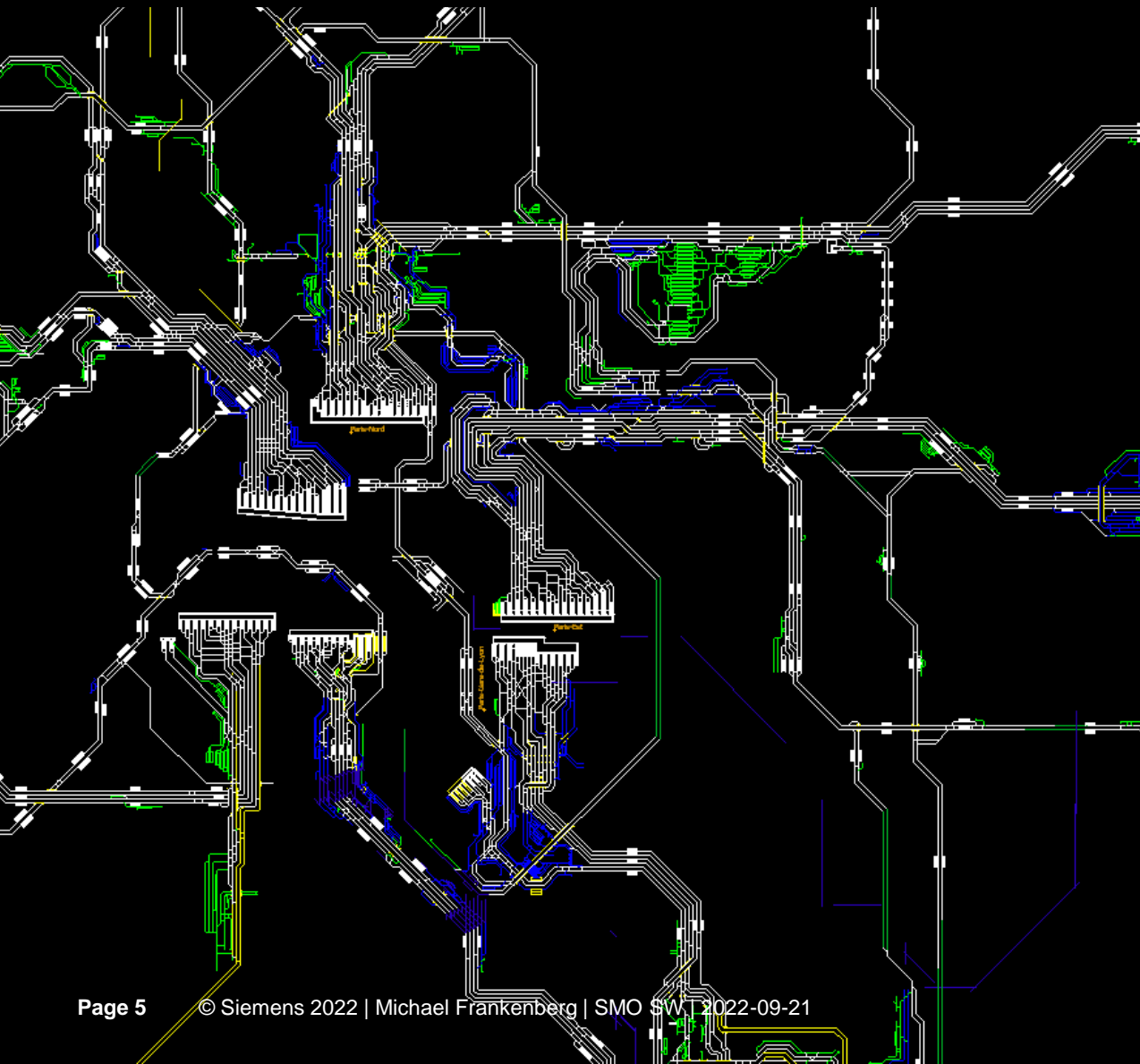
## Our approach for such an eco-system of digital solutions



# With an interoperable and connected ecosystem of digital solutions, we can provide additional value to our customers



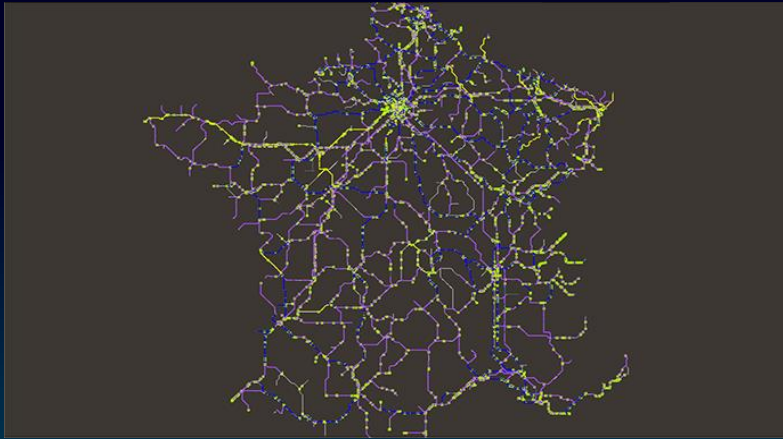
Let's get digital!



# Digital workflow of train operations & timetables

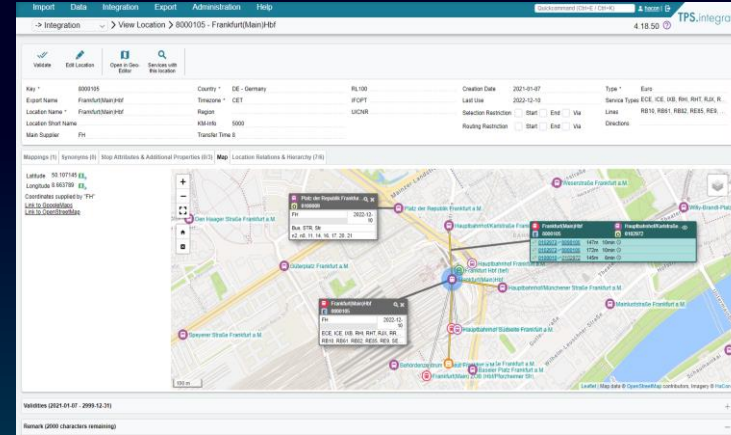
## Infrastructure Manager

Network-wide path planning and capacity management

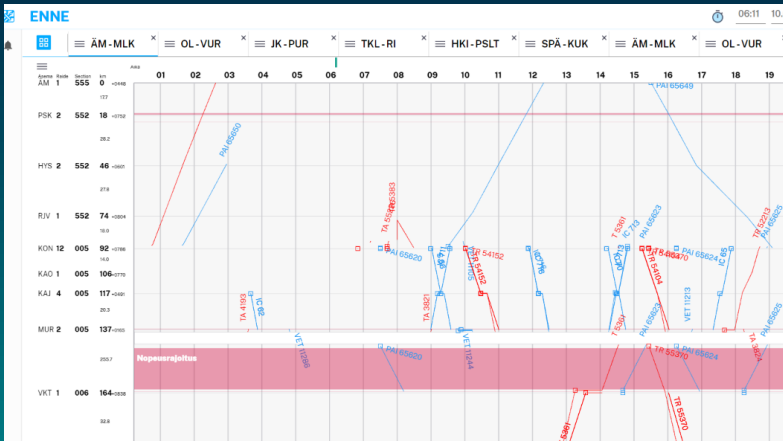


## Timetable Management

Data management and harmonization for travel information systems



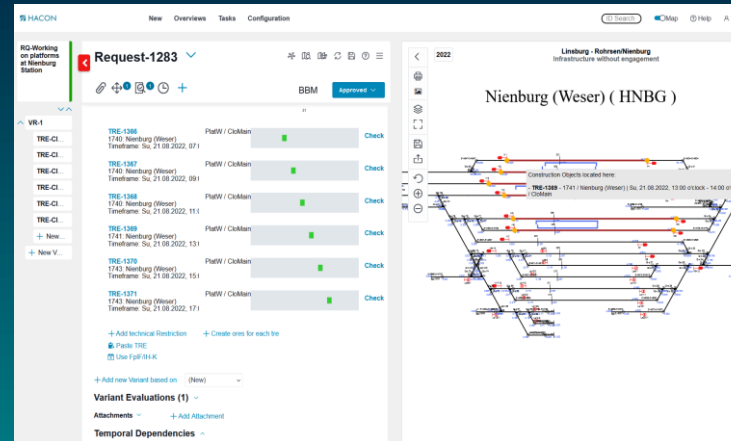
Effective traffic management in real-time



## Train Operator

## Trackworks

Coordinate construction sites across the network



# Let's enhance passenger experience!

## Own Car



## Mobility as a Service

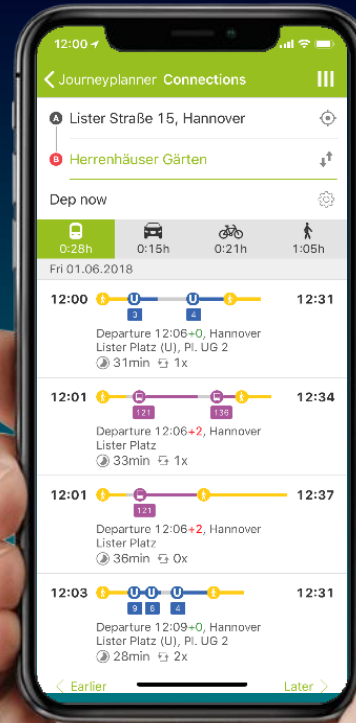
All modes of transportation

Convenient access

Mobility orchestration

Integrated Demand Responsive Transport

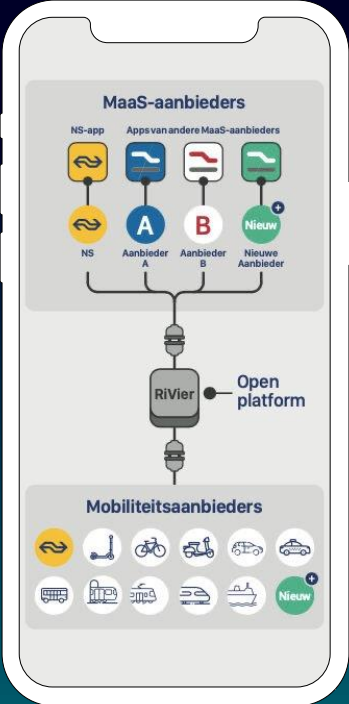
# One App. One Account. Plan. Book. Pay.





# Countrywide MaaS solutions

**RiVier**  
Netherlands



- Countrywide Mobility as a Service (MaaS) platform for the Netherlands
- Plan, book & pay for public transport & mobility providers
- Open Ecosystem

**Renfe-as-a-Service**  
Spain



- Countrywide Mobility as a Service (MaaS) platform for Spain
- Integration of shared and public transport
- Renfe predicts: 650,000 new customers to train travel & increasing train ticket sales by 3% to 4%

# Demand Responsive Transport Orchestration

## USE CASES:

First & last mile

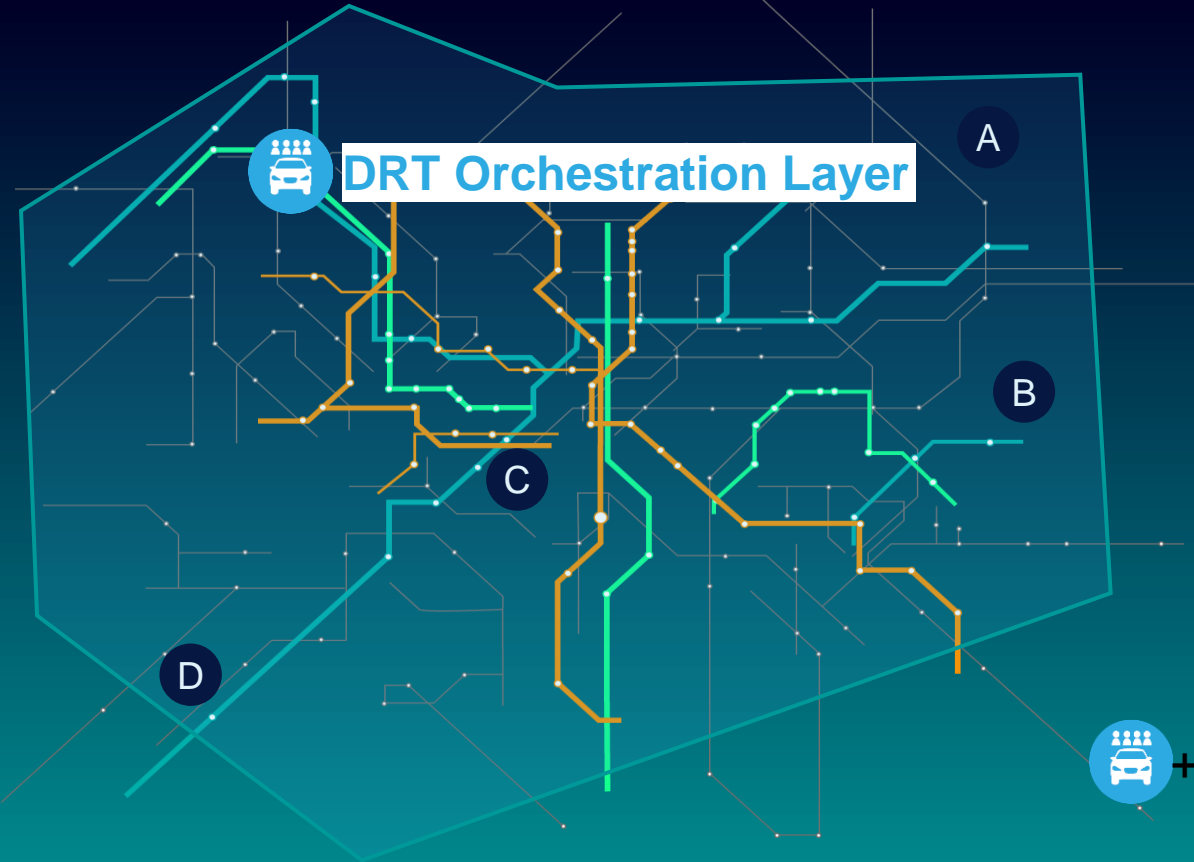
Paratransit

Off-peak hours

Corporate

Peri-urban & rural

Other use cases



A Demand Responsive Transport System is needed which is deeply connected into Public Transport Networks.

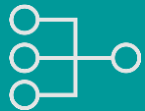
Let's balance supply & demand!

# sqills S3 Passenger

**Software as a Service platform** for **inventory management, seat reservation, and ticket distribution** for mainline rail and bus operators.

- Developed by Sqills because the industry lacked a configurable standardised **product**
- Market and operator agnostic
- Focus on carriers, but strong package of “direct distribution” functions
- Single codebase for all clients, but securely isolated instances for each customer
- Cutting edge technology, API driven design

SIEMENS



Multi Channel



Seat Reservations



Configurable Business Logic



Train & Bus Industry



Modern technology



Generic Functionality

# Let's connect!

**Journey 181452 (X04415)**  
12:58 Rainham (Kent) [RAI] → Luton [LUT]

°C ● ● ● ● 7%

Train Info Route Journey Info

ThamesLink /

14:01 +0	14:01 +0	Plumstead [PLU]
14:04 +0	14:04 +0	Woolwich Arsenal [WWA]

**Aggregated Coach Information**

3 2 1 1 Cab

11% 11% 4%

8 Coaches

Durchschnittl. Temperatur: 20,4 °C ●

Waggons mit Temp.problemen: 0

Railigent train status for passenger information  
Live @ Thameslink UK

BVG.de Karriere Unternehmen Presse meintram.de

Neu in der FAHRINFO APP

**Immer wissen, wann nichts los ist.**  
Mit der neuen Auslastungsanzeige der BVG.

**Entspannter von A nach B mit unserer Fahrinfo-App**

Das öffentliche Leben steht seit Monaten Kopf. Abstand halten und sich selbst und andere vor Corona zu schützen, hat dabei oberste Priorität. Auch wir tun alles, um dich und andere Fahrgäste bestmöglich zu schützen.

Deswegen haben wir unsere Fahrinfo-App um ein neues Feature ergänzt: die Auslastungsanzeige. So kannst du zukünftig schon vorab einschätzen, wie leer oder voll es auf deiner Strecke wird und dementsprechend deine Fahrt besser planen.

Lade dir unsere Fahrinfo-App jetzt schnell und unkompliziert runter:

NEU!

U Voltastr. (Berlin) 247 → U Leopoldplatz  
Geringe Auslastung erwartet

Laden im App Store JETZT BEI Google Play

AI based occupancy forecast  
Live @ BVG Berlin



# Railigent X

The solution to manage rail assets smarter

**Up to 40%**

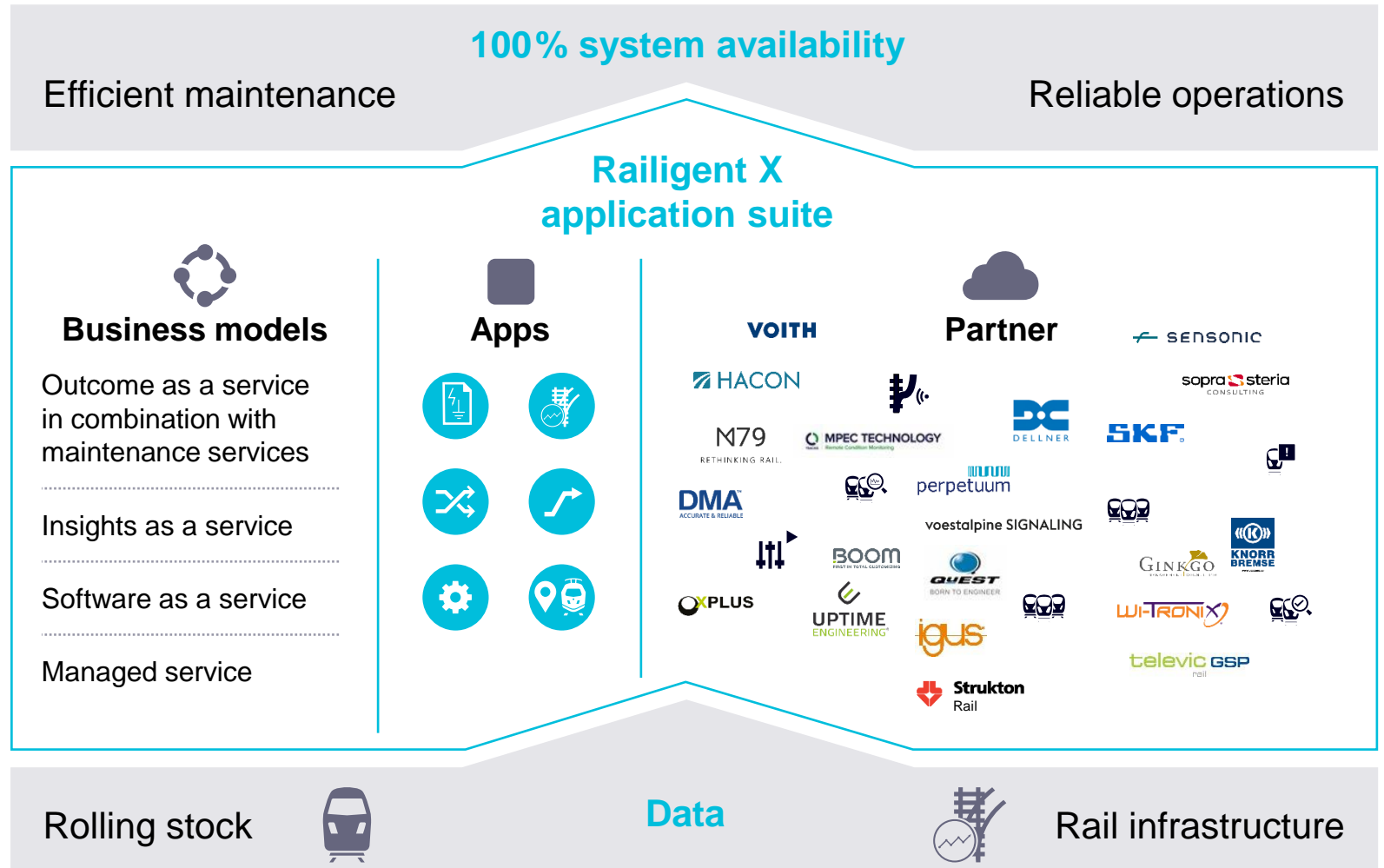
lower costs due to less service delays

**Up to 30%**

reduction of unscheduled depot stops

**Up to 15%**

reduction of maintenance costs



# Railigent X evolution

Railigent

Railigent X

Focus on analytics



Applications for prediction  
**100% availability**



Open ecosystem  
**Alliance for Availability**



Connected asset IoT platform with open APIs  
**Xcelerator – Connected asset platform**

Cybersecurity



Connectivity

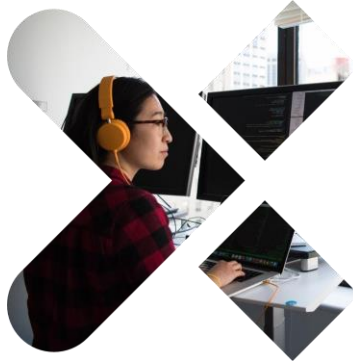


Domain knowhow



# Siemens Xcelerator at Mobility Customer Services

Railigent X – maximizing rail asset's value to 100% system availability



## API-centric analytics extension

- Providing an open framework for creating scalable analytics/AI solutions
- via the Analytics Enabler Suite e.g. for **our partnering university RWTH Aachen**

Enables easy creation of analytical models



## Operator/maintainer and asset owner

- Connecting vehicles and depots for locomotives
- via the Rail service hub, already in place for the 16 Vectrons **of our customer boxXpress**

Maintenance works can be easily and flexibly scheduled into running operations

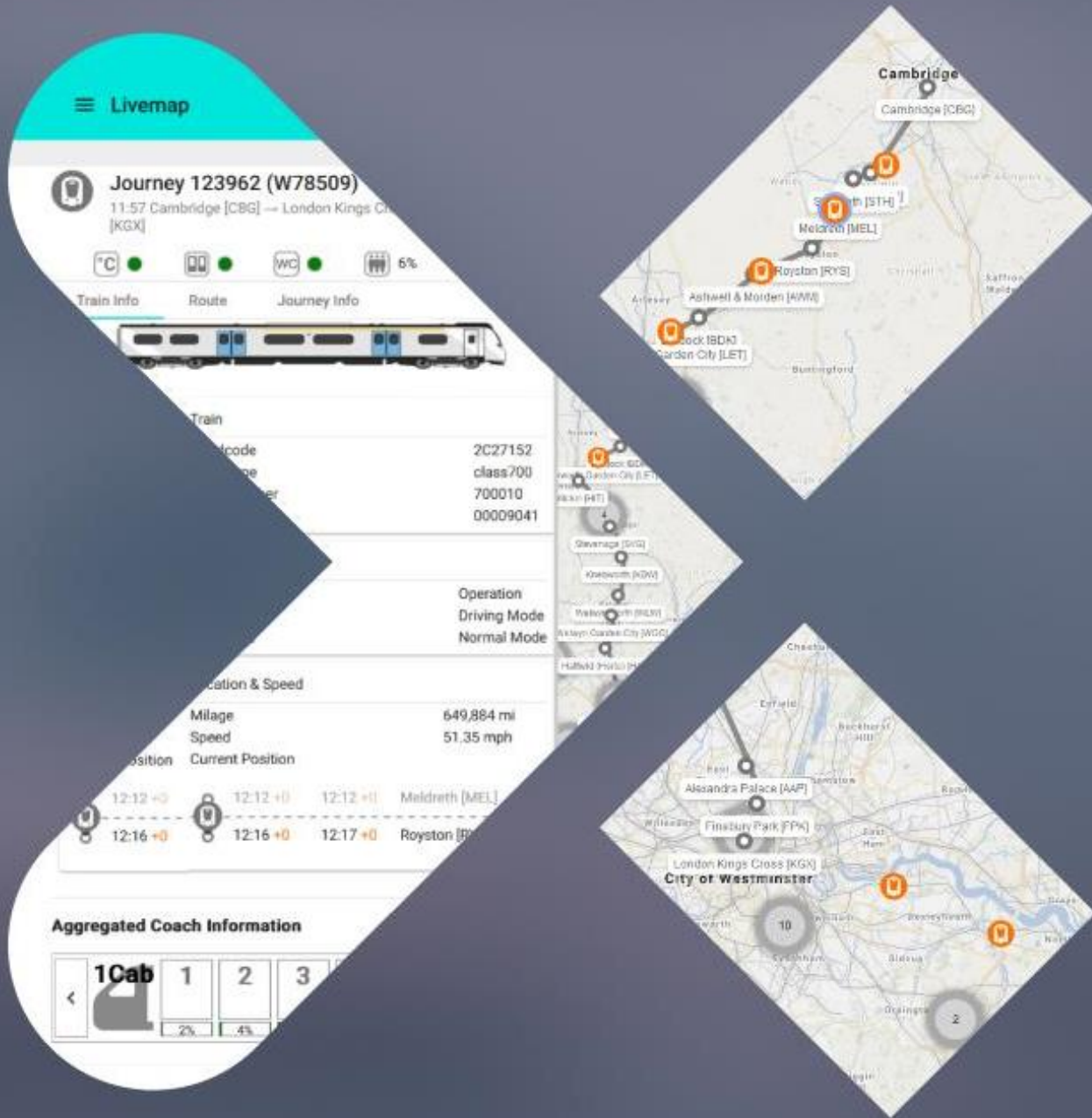


## Operator/maintainer and asset owner

- Loading software while trains are rolling, control train IT systems from the wayside
- via remote SW update as being installed for one of **our UK customers**

Reduced effort and costs for operations





**Siemens Xcelerator for mobility –**  
 the interoperable and connected ecosystem  
 for everyone:

<b>Easy</b> 	<b>Flexible</b> 	<b>Open</b> 
---	---	---

**Mobility Software Suite X**  
 connects people for  
 100% occupancy

**Railigent X**  
 connects assets for  
 100% system  
 availability

**Thank you!**

