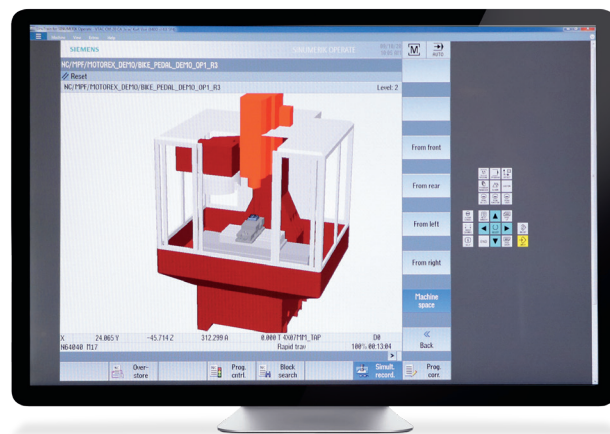


Digital Twin Easy Start

Increase your manufacturing productivity
and accelerate your business

Start using the Digital Twin today— Now available through SinuTrain

Small and large machine shops already use SinuTrain to optimize their shopfloor processes through efficient job preparation—and when they incorporate the digital twin, they can manufacture parts even faster while programming less at the machine. So can you—with Digital Twin Easy Start!



What is SinuTrain?

Quite simply—SinuTrain is the control-identical software tool from Siemens used for offline part programming, production planning and even training of the SINUMERIK control.

What is the Digital Twin?

Quite simply, it's a virtual duplicate of your CNC milling machine. You have the ability to simulate the machine's functionality and actions in the virtual world that would normally take place in the real world before you start producing chips. This significantly reduces your risk of costly machine downtime and even collisions.

So how can you benefit from using SinuTrain and the Digital Twin?

With SinuTrain and the Digital Twin, you now have the ability to create the 3-dimensional machining environment in a virtual space even before you get to the manufacturing floor.

Quickly and easily validate the actual machining of the product, evaluate the process that will happen before the first cut, and optimize your CNC part programs to stay up-and-running.

And if you have new CNC machine operators or service people on your staff, they can now be trained on the basis of the digital twin without having to tie-up the actual machine.



To start accelerating your business with Digital Twin Easy Start, send us a message or visit our website:

cnc.us@siemens.com

usa.siemens.com/dtes

We'll get in contact with you right away.

Published by
Siemens Industry, Inc.

390 Kent Avenue
Elk Grove Village, IL 60007

1-800-879-8079

usa.siemens.com/cnc

Order No. MBSP-DTESMU-0920

Printed in USA

© 2020 Siemens Industry, Inc.

This document contains only general descriptions or performance features, which do not always apply in the manner described in concrete application situations or may change as the products undergo further development. Performance features are valid only if they are formally agreed upon when the contract is closed.

Siemens is a registered trademark of Siemens AG. Product names mentioned may be trademarks or registered trademarks of their respective companies. Specifications are subject to change without notice.