

Using Energy Responsibly

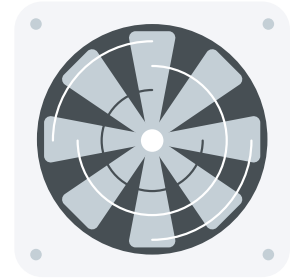
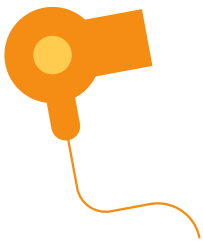
Suitable
for years
3-6!

From our investigation into electricity consumption we now have a clearer idea of what uses more electricity.

Learning to be responsible with our energy use is really important for the planet so we don't waste precious non-renewable energy sources on electricity we don't really need. That means not leaving our electrical items plugged in when they are not being used.

Task 1

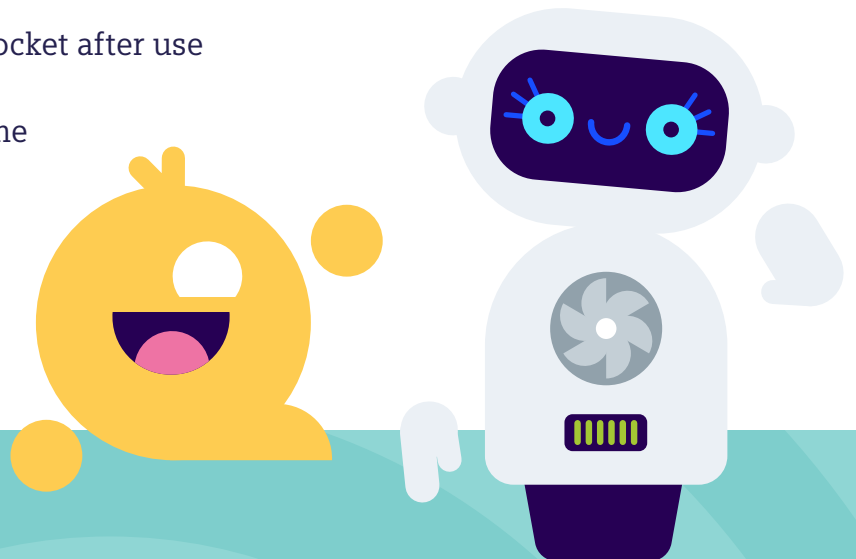
Out of the items that REG and KB2 use, circle 2 items you think use the most energy (kWh.)



Task 2

Circle 2 ways KB2 and REG could reduce the electrical consumption of these items from the list below:

- Use the electrical item for a shorter amount of time
- Unplug the electrical item from the socket after use
- Leave the item switched on all the time
- Leave the electrical item plugged in



Task 3

REG's spotlight, which converts electricity into light energy, uses the least amount of energy. BUT if REG used more than one spotlight the amount of kWh would increase.

Think about the lights in your house – **draw a picture of your house and fill in the number of lights in each room.** Like REG, it's good to use only one light at a time, even if you have a lot in your house.



Bonus Task

If one light is used for 6 hours a day for a year, this will cost £13.

Using a calculator, work out how much it would cost to use every light in your house every day for a year.

13 x [insert numbers of lights] = £

