

The Siemens logo is positioned in the top right corner of the page. It consists of the word "SIEMENS" in a bold, white, sans-serif font. The background of the entire page is a dark, blue-toned image of server racks in a data center, with various digital and network-related graphics overlaid, such as glowing green and blue lines, binary code, and network diagrams.

Datacenter Clarity LC Tech Sheet

Operate and manage your data center through
a single pane of glass with Datacenter Clarity LC.
[siemens.com/dcim](https://www.siemens.com/dcim)

DATACENTER CLARITY LC – TECH SHEET

Overview

Datcenter Clarity LC™* is part of the Siemens Integrated Datacenter Management Suite (IDCMS). Clarity LC provides tools for operating and optimizing data centers, including:

- Asset management combined with real-time values
- Connections management
- Change management
- Computational fluid dynamics

Using state-of-the-art engineering software and product lifecycle management tools, Datcenter Clarity provides data center operators with the information they need to make informed, timely decisions. This helps optimize equipment placement and improve the longevity and availability of data center infrastructure. Datcenter Clarity LC can help organizations:

- Get clear insights into all mission-critical systems.
- Avoid problems by properly forecasting capacity issues.

- Use real-time data and forecasting to find, analyze, and resolve problems.
- Optimize operational KPIs for greater efficiency and reduced cooling costs.
- Integrate with existing data center management frameworks, including COBIT and ITIL®.

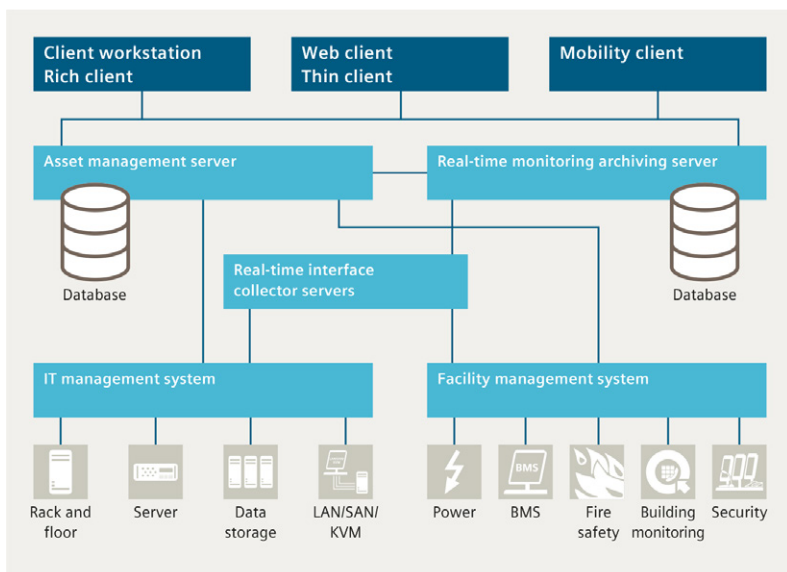
System architecture

Datcenter Clarity LC provides flexible client-server architectures configured to meet the needs of each organization, including:

1. High-performance distributed architectures for environments where performance is key.
2. Highly available architectures for environments that are especially sensitive to downtime.
3. Scaled-back architectures for sandbox and testing environments.

Datcenter Clarity LC is fully scalable and vendor agnostic. It supports all standard protocols on the market and comes with more than 450 proprietary protocols.

*Datcenter Clarity LC™ is a trademark owned and licensed by Maya Heat Transfer Technologies Ltd.



Datcenter Clarity LC high-level architecture

DATACENTER CLARITY LC – TECH SHEET

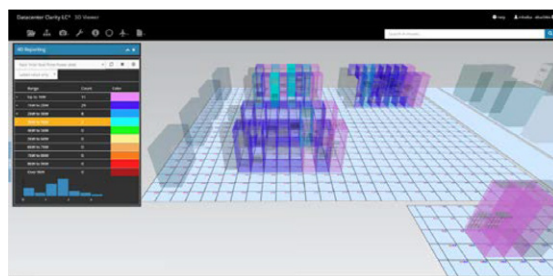
Key features

Web client

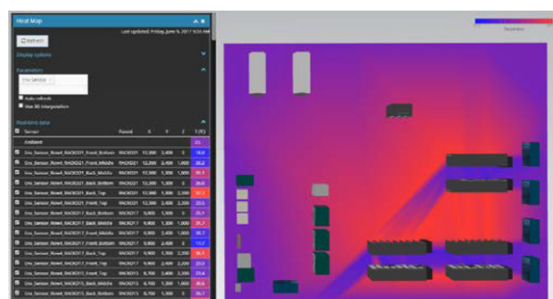
The DC Clarity LC Web client is an HTML5-based collaborative platform accessible from any device of the user’s choosing. It provides tools to manage inventory, connections, and processes, view real-time alarm information, and generate reports. Tools are made available according to access rights, and can be restricted based on individual users as well as different roles, giving organizations the flexibility to efficiently segregate data.

High-resolution asset visualization

- High-definition, fully integrated, browser-based 3D modeling environment.
- Clarity Index reports optimize asset placement based on the availability of U space, real-time power, ports, and more.
- Create, modify, move, and delete assets from within the 3D environment.
- Visual, intuitive, and customizable reporting capabilities.
- Temperature-mapping capability for the early identification of hot spots.



Datacenter Clarity LC 4D reports



Datacenter Clarity LC temperature map

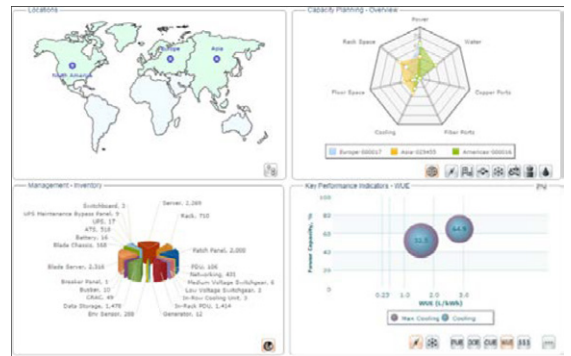
DATACENTER CLARITY LC – TECH SHEET

Key features

Real-time monitoring

Dashboards

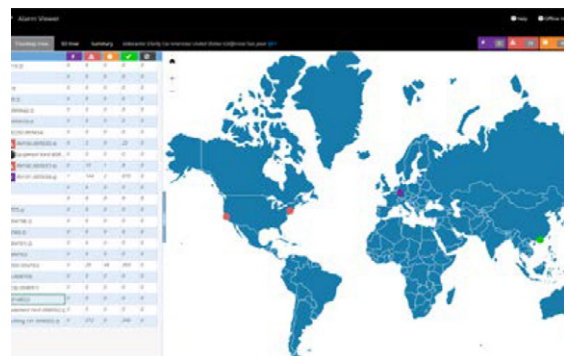
- Creation of customized dashboards to display real-time device data.
- Pivot tables help users organize and analyze data on-the-fly.
- High-level dashboards report on key performance metrics (PUE, WUE, and more), which facilitates well-informed planning decisions.



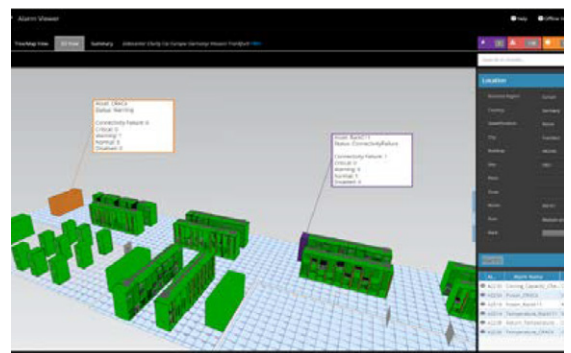
High-level dashboard

Alarms and event feed

- Web-based alarm feed, map, and 3D visualization.
- Custom SMS and e-mail alarm notifications.
- Automatic triggering of workflows and task assignments.



Alarm viewer: map



Alarm viewer: 3D view

DATACENTER CLARITY LC – TECH SHEET

Key features

Infrastructure lifecycle management

- Inventory management and reporting in CSV and HTML formats.
- Robust and comprehensive access control configurable down to the port level.
- Regularly updated equipment library with thousands of IT and facilities assets from all major vendors to which users can add as required.
- Ability to map to existing customer data and leverage and/or integrate with existing tools.
- 3D model creation using standard modelling and recording tools, including AutoCAD drawings, Excel spreadsheets, STEP, IGES, and Parasolid.

Process management

Datacenter Clarity LC's comprehensive change and process management modules provide visibility into all aspects of data center operations.

- Facilitate collaboration between all project stakeholders.
- Create customized workflows to match standard procedures.
- Manage project schedules, planning, and resources.
- Submit change requests and monitor their status from the Web client interface.
- Assign users or groups to specific tasks in the workflow.
- Automatically generate and attach custom, task-specific work orders.
- Forward and re-assign tasks as necessary.



Sample workflow

DATACENTER CLARITY LC – TECH SHEET

Key features

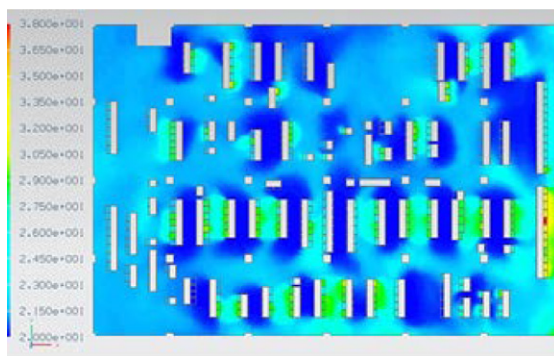
Power and network management

- Use DC Clarity LC's Web-based connections management modules to create, modify, and manage network and power connections.
- 2D visualizations show the end-to-end power and network layouts, allowing for quick identification of upstream and downstream assets and diagnosis of configuration issues such as lack of redundancy or missing connections.

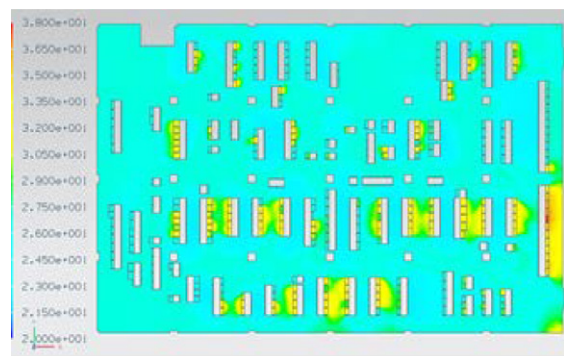
Computational fluid dynamics (CFD)

MayaHTT's industry-leading CFD software assesses airflow and cooling strategies and is fully embedded in Datacenter Clarity LC. This enables organizations to:

- Optimize energy usage.
- Predict temperatures and airflows throughout the data center.
- Identify inefficient devices and hot-spots.
- Evaluate tile flow distribution and underfloor obstructions.
- Forward and reassign tasks as necessary.



CFD analysis before optimization



CFD of a data center post airflow optimization

DATACENTER CLARITY LC – TECH SHEET

Open interface and protocol support

Real-time monitoring

More than 450 standard and proprietary interfaces provide connectivity to any facility devices, BMS, EPMS, IDS, fire and alarm systems, SCADA/DCS, PLC/instrument systems, LIMS systems, IT devices, and other business information systems through the following communication protocols/interfaces:

- OPC
- Modbus
- Bacnet
- HTML
- UFL
- DNP3
- Advanced IT monitoring interfaces:
 - SNMP Trap, Windows EventLog,
 - SyslogStandard Manufacturing Control Network (MCN) Health Monitor interface
- Other IT/facilities monitoring interfaces/ protocols

**Published by
Siemens Switzerland Ltd**

Smart Infrastructure
Global Headquarters
Theilerstrasse 1a
6300 Zug
Switzerland
Tel +41 58 724 24 24

**For the U.S. published by
Siemens Industry Inc.**

100 Technology Drive
Alpharetta, GA 30005
United States

Smart Infrastructure intelligently connects energy systems, buildings and industries to adapt and evolve the way we live and work.

We work together with customers and partners to create an ecosystem that intuitively responds to the needs of people and helps customers to better use resources.

It helps our customers to thrive, communities to progress and supports sustainable development.

Creating environments that care.
[siemens.com/smart-infrastructure](https://www.siemens.com/smart-infrastructure)

Subject to changes and errors. The information given in this document only contains general descriptions and/or performance features which may not always specifically reflect those described, or which may undergo modification in the course of further development of the products. The requested performance features are binding only when they are expressly agreed upon in the concluded contract.

© Siemens 2021

