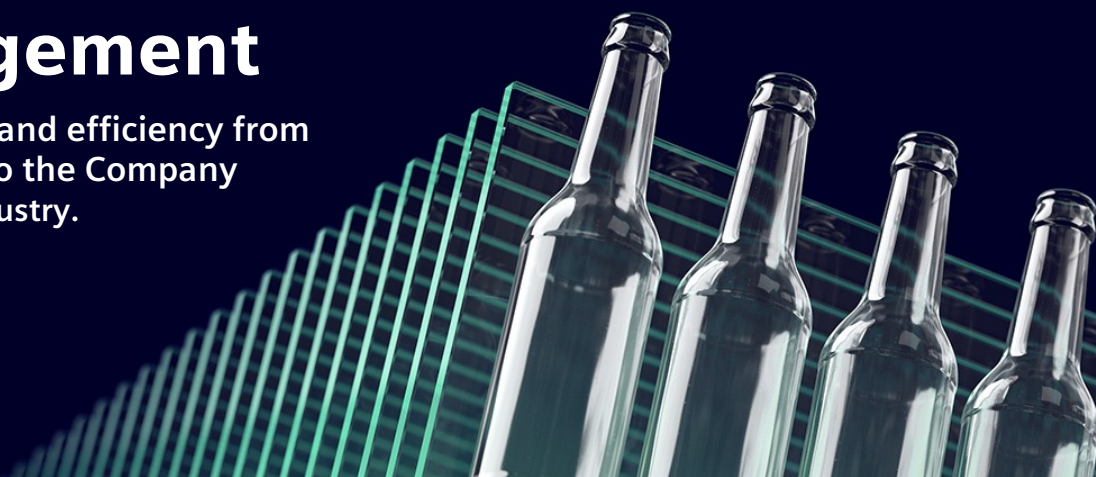




# Energy Management

Transparency and efficiency from the machine to the Company in the glass industry.



## The Challenge

The glass industry is traditionally an industry with a high energy demand. Annual increases in energy costs, compliance with legal requirements (e.g., ISO 50001), and above all, environmental and climate conservation are the current challenges facing the industry. Customers and investors increasingly expect environmentally friendly products.

The key to mastering these challenges is a precise knowledge and an analysis of one's own energy consumption – from the individual devices in the facilities to the company as a whole. Only with this knowledge is it possible for you to identify the potential savings, increase energy efficiency, and thereby reduce costs and lower your carbon footprint.

## The Solution

Take advantage of SIMATIC Energy Management, a comprehensive ISO 50001-certified, scalable portfolio of products and solutions – from energy data collection at the field level to enterprise-wide energy analysis at the management level.

## Your Advantages

With SIMATIC Energy Management, the energy flows in your facilities can be displayed transparently and in detail. The consumption data can be analyzed and energy saving potentials can be derived, sustainably increasing efficiency and productivity. The result is not only an improved cost structure and higher competitiveness, but also the confidence of customers and investors that you are aware of your responsibility to the climate and to future generations.

After quick and easy engineering, SIMATIC Energy Management provides you with energy data measurement for your facilities, as well as consistent recording of the data obtained – supported by integrated standardized interfaces. The SIMATIC Energy Manager supports you in analyzing, logging, and documenting your energy data and the related production data. The consumption values for the individual devices are analyzed in real time, enabling efficient peak load management.

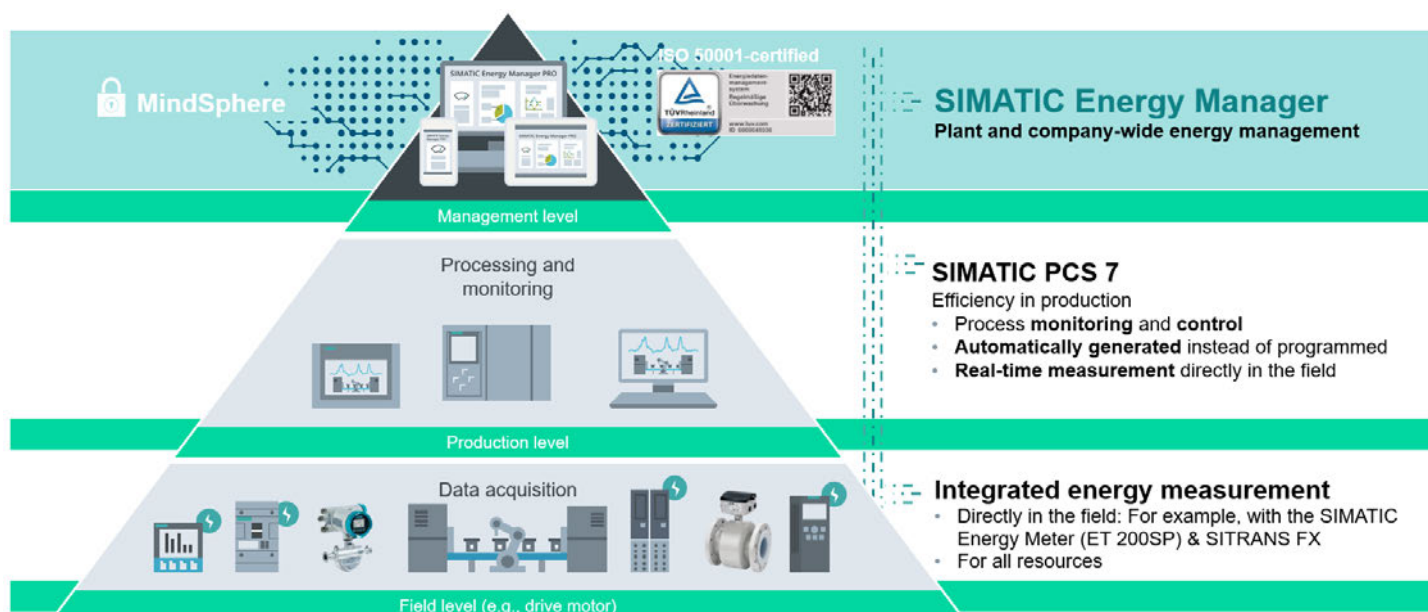
The S7 energy efficiency monitor evaluates the efficiency of your machines, thereby allowing you to identify maintenance requirements early, for example, or to draw conclusions about the efficiency development of the devices.

SIMATIC Energy Management, therefore, provides you with a comprehensive view of all energy and resource consumption.

## Advantages of Energy Management

- Overview of the energy flows and costs
- Derivation of energy efficiency measures using the energy key figures obtained
- Climate and environmental conservation
- Sensitization of employees
- Transparent and comprehensible goals and their fulfillment
- Energy assessment of technological processes and facilities
- Increased planning security
- Ensuring that efficient facilities remain efficient

# SIMATIC Energy Management – transparency and efficiency from the facility through to the entire company



[www.siemens.com/simatic-energy-management](http://www.siemens.com/simatic-energy-management)

**Publisher**  
**Siemens AG**  
Digital Industries  
Vertical Glass  
Siemensallee 84  
76187 Karlsruhe, Germany  
[siemens.com/glass](http://siemens.com/glass)  
[glass.digitalization.industry@siemens.com](mailto:glass.digitalization.industry@siemens.com)  
© Siemens 2022



**SIMATIC**  
**Energy**  
**Manage**  
**ment**

Subject to changes and errors. The information in this document only contains general descriptions and/or performance characteristics which may not always apply as described or which may change in the course of further development of the product. An obligation to provide the respective characteristics only exists if expressly agreed in the terms of contract.

All product names may be trademarks or product names of Siemens AG or its suppliers, the use of which by third parties for their own purposes may infringe upon the rights of the owner.