


- NOTES**
- 1) TERMINALS RECOMMENDED ARE PRE-INSULATED & MUST BE CRIMPED USING APPROVED TOOLING. AMP PLOG OR PLASTI GRIP FUNNEL ENTRY (RING TONGUE) FOR M4 FIXING STUD.
  - 2) FOR OUTLINE & PANEL DRILLING, SEE 2995X10004 (A4).
  - 3) CONNECTIONS TO THIS COMMUNICATIONS FACILITY IS BY SCREENED, TWISTED PAIR CABLE ON SITE. WHEN WIRING OTHER FACILITIES ENSURE THAT THESE TERMINALS ARE NOT OBSCURED BY OTHER WIRE RUNS.
  - 4) CONTACTS SHOWN THUS  ARE INTERNAL RELAY CASE ASSEMBLY CONTACTS AND CLOSE WHEN THE RELAY CHASSIS IS WITHDRAWN FROM THE CASE.
  - 5) FOR THE RELAY CASE ASSEMBLY SEE 2436G40048

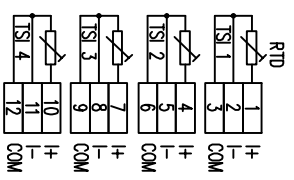
SUPPLIER	PART NUMBER	CABLE SIZE
AMP	342103	0.25-1.6mm <sup>2</sup>
AMP	342143	1.0-2.6mm <sup>2</sup>

OR ANY OTHER MANUFACTURERS EQUIVALENT TERMINAL

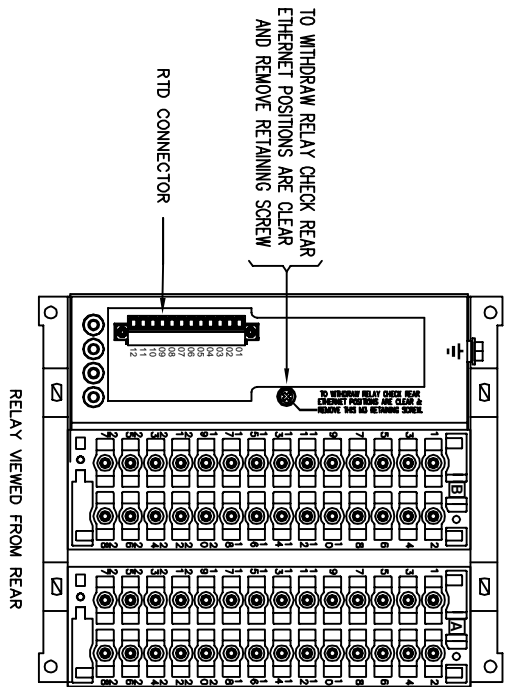
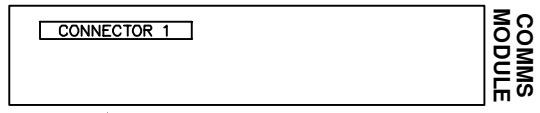
**ABBREVIATIONS**

I-CURRENT INPUTS
V-VOLTAGE INPUTS
BI-BINARY INPUTS
BO-BINARY OUTPUTS
CO-CHANGE OVER BINARY OUTPUT CONTACTS
NO-NORMALLY OPEN BINARY OUTPUT CONTACTS
NC-NORMALLY CLOSED BINARY OUTPUT CONTACTS

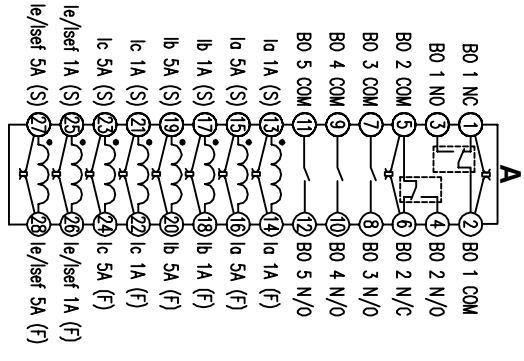
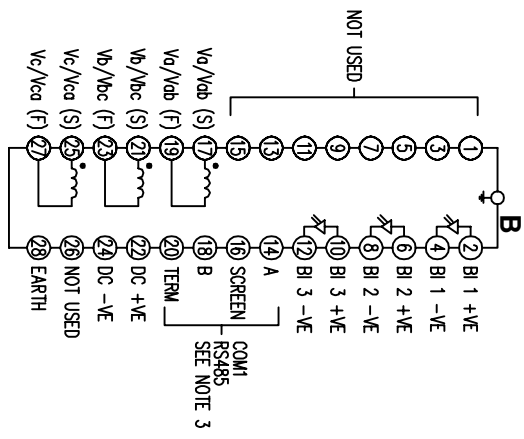
COMMUNICATIONS IDENTIFICATION	
COM1	RS485 (ON BLOCK 'B' TERMINALS 14,16,18 & 20)
COM2	USB TYPE 'B' PORT (ON RELAY FRONT LABEL)



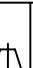
**CONNECTOR 1**



TO WITHDRAW RELAY CHECK REAR ETHERNET POSITIONS ARE CLEAR AND REMOVE RETAINING SCREW



FOR INTERNAL USE ONLY  
UNCONTROLLED COPY  
NOT SUBJECT TO UPDATE

Rev	Change	Date	Name	FINISH	Material	Material Scale	Value/Range																				
1A	DRAWING RELEASED		AMAR		NTS																						
<table border="1"> <tr><th>DRN BY</th><td>AMAR</td></tr> <tr><th>CHKD BY</th><td>JOHN SF</td></tr> <tr><th>APPRD BY</th><td>JAVANT J</td></tr> </table>				DRN BY	AMAR	CHKD BY	JOHN SF	APPRD BY	JAVANT J	<table border="1"> <tr><th>Name</th><td>AMAR</td></tr> <tr><th>EM EA PRO R&amp;D</th><td></td></tr> </table>				Name	AMAR	EM EA PRO R&D											
DRN BY	AMAR																										
CHKD BY	JOHN SF																										
APPRD BY	JAVANT J																										
Name	AMAR																										
EM EA PRO R&D																											
<table border="1"> <tr><th>UNSPECIFIED TOLERANCES (MM)</th><td></td></tr> <tr><td>0-4</td><td>M3</td></tr> <tr><td>4-16</td><td>M4</td></tr> <tr><td>16-50</td><td>M5</td></tr> <tr><td>50+</td><td>M6</td></tr> </table>				UNSPECIFIED TOLERANCES (MM)		0-4	M3	4-16	M4	16-50	M5	50+	M6	<table border="1"> <tr><th>Tolerance</th><td></td></tr> <tr><td>±0.1</td><td>M3</td></tr> <tr><td>±0.15</td><td>M4</td></tr> <tr><td>±0.2</td><td>M5</td></tr> <tr><td>±0.25</td><td>M6</td></tr> </table>				Tolerance		±0.1	M3	±0.15	M4	±0.2	M5	±0.25	M6
UNSPECIFIED TOLERANCES (MM)																											
0-4	M3																										
4-16	M4																										
16-50	M5																										
50+	M6																										
Tolerance																											
±0.1	M3																										
±0.15	M4																										
±0.2	M5																										
±0.25	M6																										
<table border="1"> <tr><th>Docu No</th><td>2436W40064</td></tr> <tr><th>Docu Title</th><td>TERMINAL ID &amp; WIRING DIAGRAM FOR 7SR17 4CT+3VT+3BI+5BO(2CO+3NO), 4 RTD</td></tr> </table>				Docu No	2436W40064	Docu Title	TERMINAL ID & WIRING DIAGRAM FOR 7SR17 4CT+3VT+3BI+5BO(2CO+3NO), 4 RTD	<table border="1"> <tr><th>Docu No</th><td>2436W40064</td></tr> <tr><th>Docu Title</th><td>TERMINAL ID &amp; WIRING DIAGRAM FOR 7SR17 4CT+3VT+3BI+5BO(2CO+3NO), 4 RTD</td></tr> </table>				Docu No	2436W40064	Docu Title	TERMINAL ID & WIRING DIAGRAM FOR 7SR17 4CT+3VT+3BI+5BO(2CO+3NO), 4 RTD												
Docu No	2436W40064																										
Docu Title	TERMINAL ID & WIRING DIAGRAM FOR 7SR17 4CT+3VT+3BI+5BO(2CO+3NO), 4 RTD																										
Docu No	2436W40064																										
Docu Title	TERMINAL ID & WIRING DIAGRAM FOR 7SR17 4CT+3VT+3BI+5BO(2CO+3NO), 4 RTD																										
<table border="1"> <tr><th>Rev</th><td>1A</td></tr> <tr><th>1 of 1</th><td></td></tr> </table>				Rev	1A	1 of 1		<table border="1"> <tr><th>Rev</th><td>1A</td></tr> <tr><th>1 of 1</th><td></td></tr> </table>				Rev	1A	1 of 1													
Rev	1A																										
1 of 1																											
Rev	1A																										
1 of 1																											

Siemens Ltd
-------------