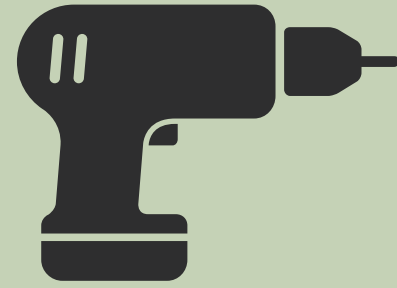


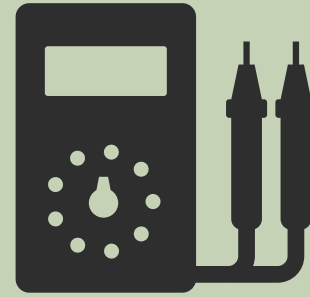
## Sample Tools Used



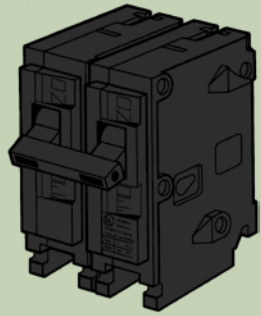
Certified Electrician  
(Recommended)



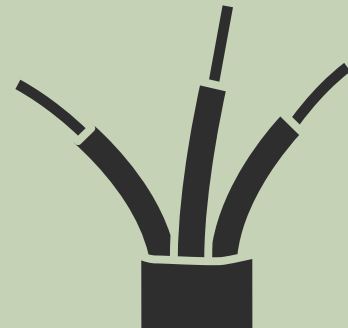
Cordless Drill  
(Phillips Bit)



240 V AC  
Voltmeter



2 pole, 40 amp  
circuit breaker



#8 copper wire,  
3 conductors



NEMA 6-50 Outlet  
(if not hardwiring)

### Refer to the included installation manual to:

- Review the complete Installation and Operations Manual
- Learn how to use the amperage adjustment dial or participate in EV programs from your utility company with the VersiCharge SG™
- Find additional information on how to future proof your home's energy consumption



Powering  
your drive  
into the  
future!

Published by Siemens Industry, Inc. 2019

Siemens Industry, Inc.  
5400 Triangle Parkway  
Norcross, GA 30092

For more information, including service or parts, please contact our  
Customer Support Center.  
Phone: +1 (800) 333-7421

[usa.siemens.com/versicharge](http://usa.siemens.com/versicharge)  
Article No. SIDS-B40014-00-4AUS  
Printed in USA  
All Rights Reserved  
© 2019, Siemens Industry, Inc.

The technical data presented in this document is based on an actual case or on as-designed parameters, and therefore should not be relied upon for any specific application and does not constitute a performance guarantee for any projects. Actual results are dependent on variable conditions. Accordingly, Siemens does not make representations, warranties, or assurances as to the accuracy, currency or completeness of the content contained herein. If requested, we will provide specific technical data or specifications with respect to any customer's particular applications. Our company is constantly involved in engineering and development. For that reason, we reserve the right to modify, at any time, the technology and product specifications contained herein.

**SIEMENS**  
*Ingenuity for life*



Click QR code  
to play  
installation  
video



Wi-Fi enabled VersiCharge SG™  
Quick Start Guide

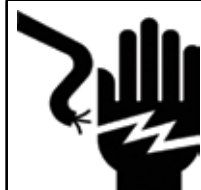
Electric Vehicle Charging Station

[usa.siemens.com/versicharge](http://usa.siemens.com/versicharge)



Be sure to register your VersiCharge SG™ at [emobility.siemens.cloud/register](http://emobility.siemens.cloud/register)

**DANGER Hazardous Voltage**



Will cause death, serious injury or substantial property damage.  
Turn off power supplying equipment before working inside.

**Professional Electricians ONLY**



For Professional Electricians ONLY. Any electrical wiring required to install this device shall conform to applicable codes and standards (ANSI/NFPA 70). A qualified electrician is recommended to perform these tasks.

**1** Run Wire (If a 240V receptacle is already installed in the desired installation location with a dedicated 40 A circuit, please skip to step 3)



A dedicated 40 amp, 2 pole circuit breaker is required. Ensure there is empty space in the load center and that the electrical system has sufficient capacity for a continuous 30 A load.

Wire conductors (copper only) per all NEC and local jurisdiction requirement. Snake wiring through walls or run conduit on exposed surfaces. Be sure to tighten down wire in circuit breakers per manufacturer's recommendation.



NOTE: Please consider your planned installation location for the mounting bracket when choosing the location to which you will run the wire.

**DANGER Explosion Hazard**

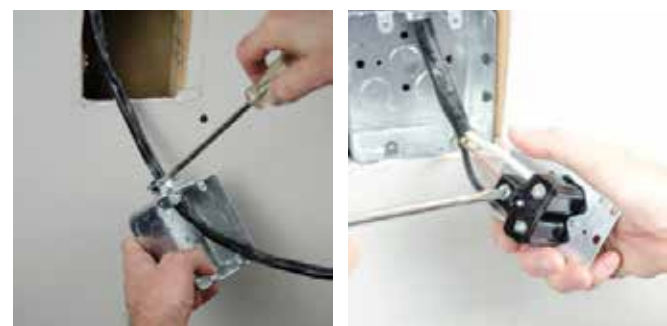


This equipment has arcing or sparking parts that should not be exposed to flammable vapors. This equipment should be installed at least 18 inches above floor or ground level. Use extreme caution and follow instructions carefully.

**2** Wire Outlet (Skip this step if hardwiring the unit)



**WARNING!** When installed outdoors, due to the risk of moisture, cord and plug installations require a NEMA outdoor rated receptacle and enclosure. Installing outdoors without properly rated outdoor receptacles and enclosures will violate listings and void the device warranty. Outdoor cord-and-plug installations must be bottom fed only.



Snake wiring through wall or run conduit on exposed surfaces.

**3** Wire the VersiCharge once it is mounted. (Skip if using receptacle)



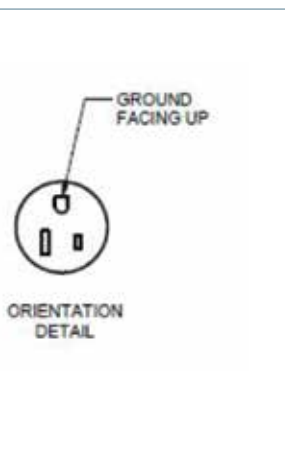
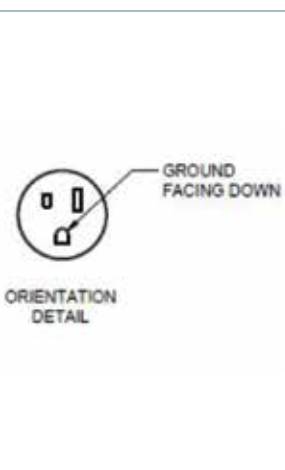
**DANGER Hazardous Voltage**



Will cause death, serious injury or substantial property damage.  
Turn off power supplying equipment before working inside.

**Mounting your VersiCharge**

**4** Select location and add mounting bracket (match bracket location with orientation of the ground hole as shown below)



Locate a stud within the wall that can handle the 14+ lb load of the VersiCharge. For concrete or other walls, install appropriate anchors. If using receptacle, ensure that power cord will reach to the outlet.

Using a 7/16" socket, attach mounting bracket to wall in compliance with all NEC and local jurisdiction requirements, using the 2 lag screws provided.

**5** Mount VersiCharge



**6** Screw down charging station



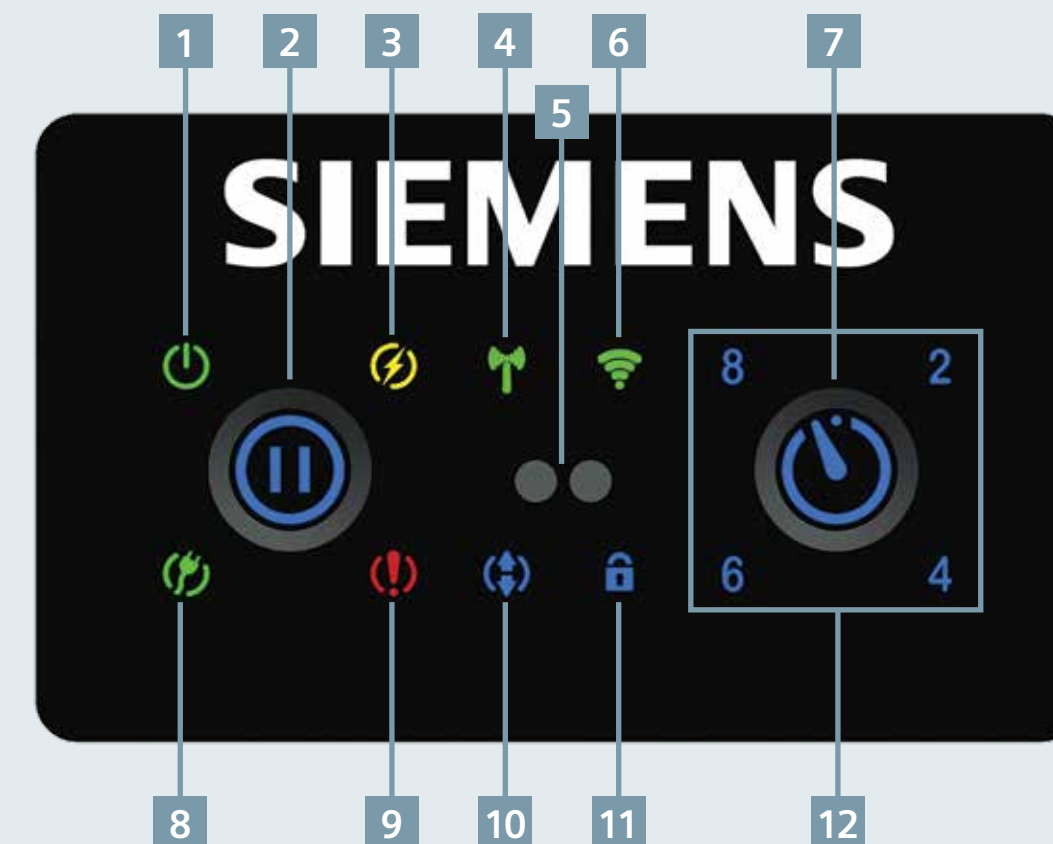
**7** Check System



Turn power on; the green Power Available light should illuminate. If it does not, verify that the outlet or wire is putting out 240 or 208 VAC.

With the Power Available light on, plug the EVSE into the car. If you have any fault lights, please consult Installation and Operations Manual.

**WARNING!** Do not force the connector into the receiver on the vehicle. If the connection between the receiver and connector shows any resistance, inspect the pins in each, and if damage is found, call a qualified service person.



- |                            |  |
|----------------------------|--|
| 1. Power                   | 7. Time Delay                          |
| 2. Pause                   | 8. Ready                               |
| 3. Charging                | 9. Fault                               |
| 4. Zigbee                  | 10. Remote Control                     |
| 5. Infrared Service Portal | 11. Remote Control Lock                |
| 6. Wi-Fi Status            | 12. Time Delay Duration (2/4/6/8 hrs.) |

Technical support: 1-800-333-7421

Visit our website: [usa.siemens.com/versicharge](http://usa.siemens.com/versicharge)

