

FOR SWITCHBOARDS AND LOW VOLTAGE SWITCHGEAR

TPS4 06/L6 Surge Protection Devices

[siemens.ca/powerdistribution](https://www.siemens.ca/powerdistribution)

Product specifications

General specifications

Maximum surge current rating range	Standard - 100kA to 500kA per phase 10 Mode - 150kA to 750kA per phase
UL Type designation	SPD Type 1 and 2
UL 1449 & CSA C22.2 No. 269 I-nominal rating	20kA
UL 1449 & CSA C22.2 No. 269 short circuit current rating	200kA
Repetitive impulse	5,000 hits
Response time	< 1/2 ns

Physical specifications

Humidity range	0-95% non-condensing
Operating frequency	47-63Hz
Operating temperature	-25°C to +60°C
Dimensions in inches (mm)	10.88" (276.2) x 10.88" (276.2) x 4.53" (115)
Weight	7.4 lbs (3357 g)
Neutral/ground connection	#8 AWG

Diagnostic monitoring specifications

Green LEDs per phase
Red service LED
Audible alarm with silence switch
Form C dry contact, 240V, 5A
Event counter with time and date stamp

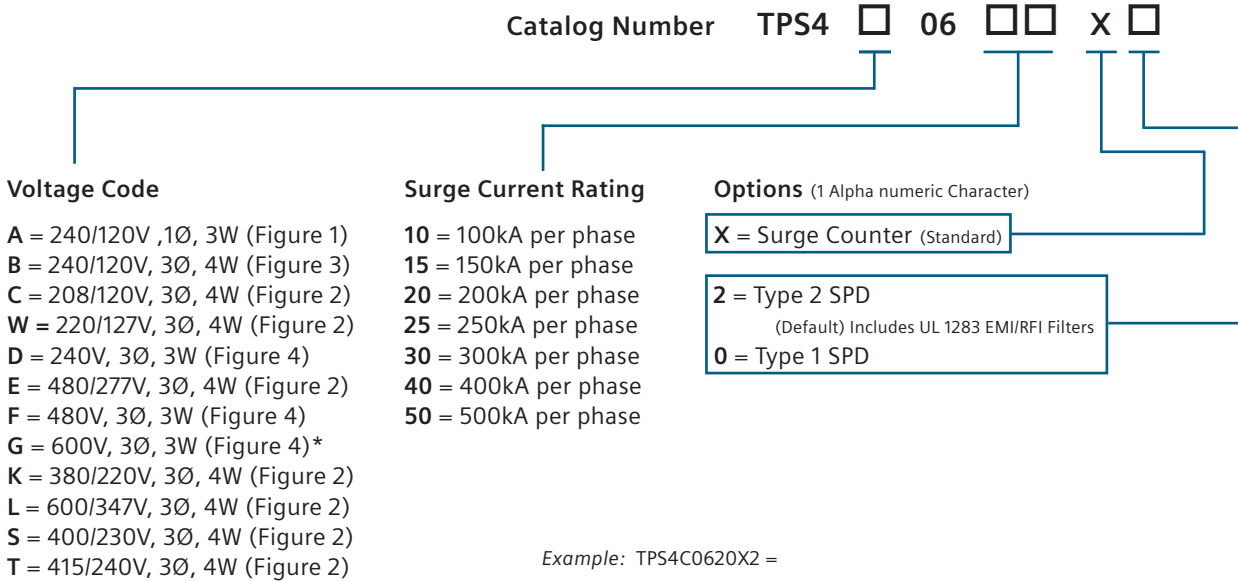
Design specifications

Stacked distribution grade MOV design
Integrated optimized thermal protection
Mounts internal to:
Switchboards
Low Voltage Switchgear

SIEMENS

Model Number Catalog Logic

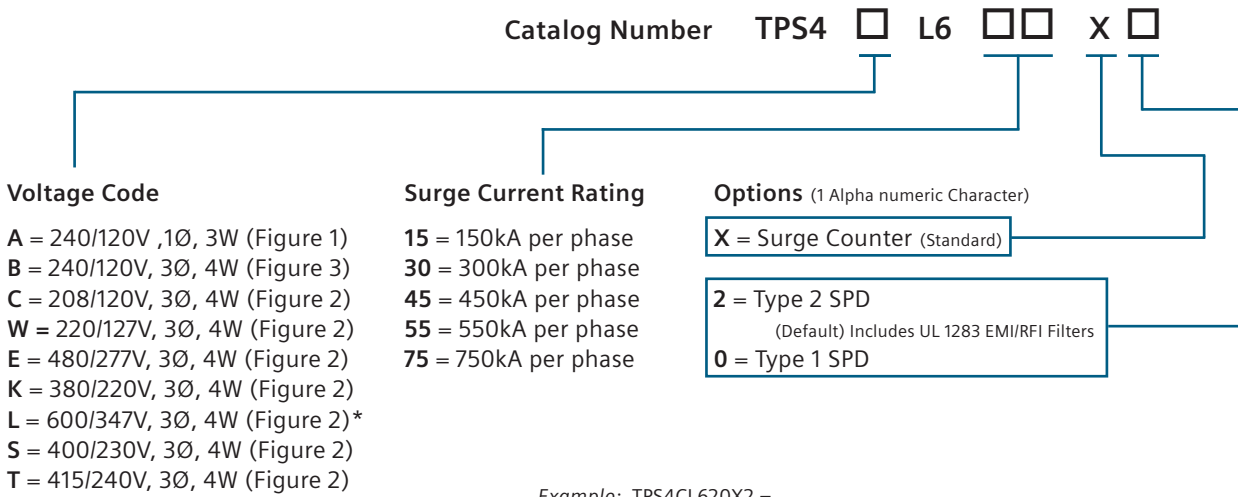
TPS4 06 for Switchboards and Low Voltage Switchgear General Suppressor Series



SPD for a 208/120V panelboard with a surge current capacity of 200kA per phase and Type 2 SPD.

*Not available in 300, 400 or 500kA versions

TPS4 L6 10 Mode for Switchboards and Low Voltage Switchgear General Suppressor Series



SPD for a 208/120V panelboard with a surge current capacity of 200kA per phase and Type 2 SPD.

*Not available in 450, 550 or 750kA versions

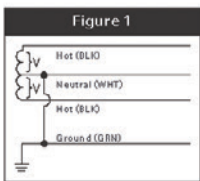


Figure 1: SPLIT
2 Hots, 1 Neu, 1 Grnd

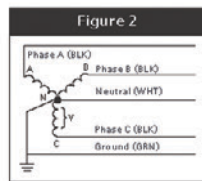


Figure 2: WYE
3 Hots, 1 Neu, 1 Grnd

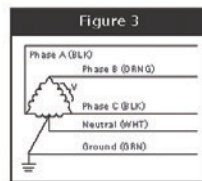


Figure 3: HI-LEG DELTA (B High)
3 Hots, (B HIGH),
1 Neu, 1 Grnd

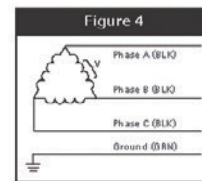


Figure 4: DELTA & HRG WYE
3 Hots, 1 Grnd

Voltage Code	System Voltage	L-N	L-G	L-L	N-G	MCOV
A	120/240V, 1Ø, 3W*	600	600	1000	600	150
B	240/120V, 3Ø, 4W	600/900	600/800	1200/1200	600	150/320
C	208Y/120V, 3Ø, 4W	600	500	900	600	150
W	220/127V, 3Ø, 4W	600	600	1000	600	150
D	240V, 3Ø, 3W	–	800	900	–	320
E	480Y/277V, 3Ø, 4W	1000	1000	1800	1000	320
F	480V, 3Ø, 3W	–	1800	1800	–	550
G	600V, 3Ø, 3W	–	1800	1800	–	690
K	380Y/220V, 3Ø, 4W	1000	900	1800	900	320
L	600Y/347V, 3Ø, 4W	1500	1200	2500	1200	420
S	400Y/230V, 3Ø, 4W	1000	900	1800	900	320
T	415Y/240V, 3Ø, 4W	1000	900	1800	900	320

*Can also be used on 208Y/120V, 1Ø, 3W System.

Modes of Protection

Standard TPS4 06

- Includes 7 discrete modes of protection (L-N x3, L-G x3, N-G) and 3 indirect modes (L-L through N or G)
- For WYE and Hi-leg delta systems only
- Delta systems do not have as many possible modes

True 10-Mode (or discrete 10-mode) TPS4 L6*

- Includes directly connected discrete protection elements between all possible modes providing true 10 mode protection.
- MOVs are placed directly in the L-L mode as well as all other modes.
- This full 10-mode protection is only achievable in Wye configurations (For 120/240 single phase TPS4 L6 provides all modes with 6-mode protection)

Discrete protection - There are directly connected MOVs in that mode of protection

Indirect protection - Protection through 2 MOVs (L-N-L or L-G-L)

* L6 surge protection devices are priced higher.

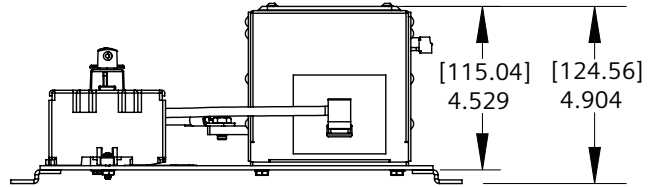
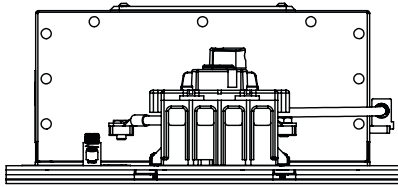
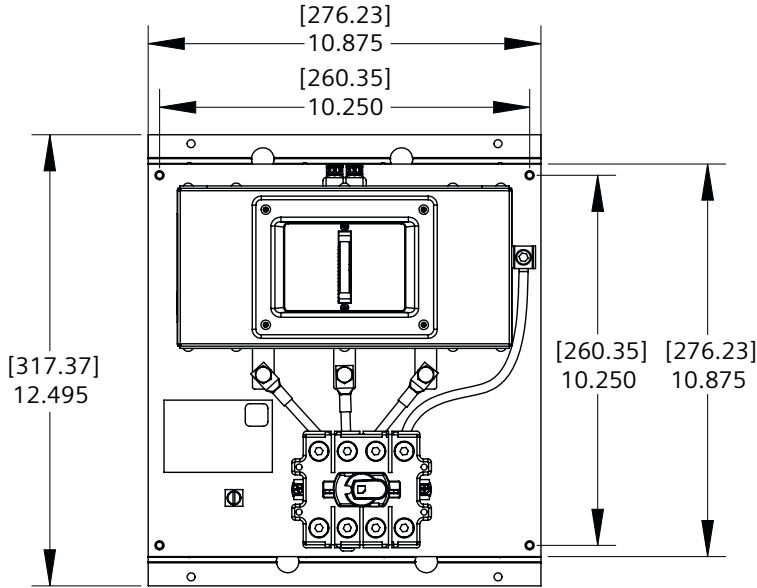
Standards compliance and certifications

UL 1449, cUL, UL1283, CSA C22.2 No 269.1 & .2, UL 96A Compliant, ANSI/IEEE C62.41.1-2002, C62.41.2-2002, C62.45-2002, NEC Article 285

ISO 9001:2014 Quality Management System, ISO 17025:2007 Laboratory Certification (UL DAP Program), 100% Quality Tested prior to shipping

10-yr product warranty

Product Diagram [in millimeters] and inches



Siemens Canada Limited
 Electrical Products
 1577 North Service Road East
 Oakville, ON L6H 0H6

Customer Interaction Centre
 (888) 303-3353
 cic.ca@siemens.com

Order No. SI-EP-1805
 © 2024, Siemens Canada Limited

This document contains a general description of available technical options only, and its effectiveness will be subject to specific variables including field conditions and project parameters. Siemens does not make representations, warranties, or assurances as to the accuracy or completeness of the content contained herein. Siemens reserves the right to modify the technology and product specifications in its sole discretion without advance notice.