
Readme / Installation instructions and user guide for Siemens WSUS Offline Update

Readme / Installation instructions and user guide for Siemens WSUS Offline Update 1

 Introduction2

 Installation of WSUS Offline Update2

 Configuration of WSUS Offline Update.....2

 Download patches4

 Update installation of WSUS Offline Update5

 Deployment of patches5

 Installation of patches5

Introduction

The goal of the tool “WSUS Offline Update” is to update Microsoft Windows systems safely, quickly and without an Internet connection on all systems. The “Siemens WSUS Offline Update configuration package” was developed to ensure that your systems are still running correctly after an update. With this configuration package the “WSUS Offline Update” installation will be prepared to ensure that only patches are downloaded and installed which were tested by Siemens. Only for **downloading** of the tool “WSUS Offline Update” and the Microsoft patches an Internet connection must be available. That computer with the internet connection shall have the latest Microsoft patches and an up-to-date virus scanner with the latest pattern files installed. It is recommended to place this computer behind a firewall or in the DMZ.

Installation of WSUS Offline Update

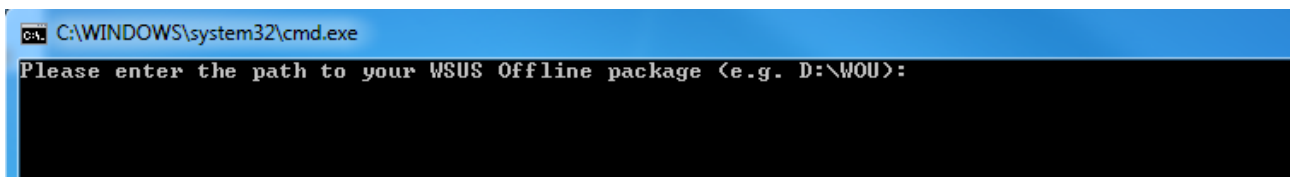
- ▶ Download the most recent version “WSUS Offline Update” from <http://download.wsusoffline.net>. (Only required for an initial installation. For update see section “Update installation of WSUS Offline Update”.)
- ▶ Unzip **wsusofflineversion.zip** to a directory of your system.

No further installation steps are needed!

Configuration of WSUS Offline Update

The following steps have to be repeated after every Microsoft patch day or every time you want to bring your systems up-to-date.

- ▶ Download the **latest** “Siemens WSUS Offline configuration package” under <http://w3.siemens.com/smartgrid/global/en/products-systems-solutions/cyber-security/Pages/products.aspx>
- ▶ Unzip **WOU_SIEMENS_EMDGPRO_yearmonth.zip** to a directory of your system.
- ▶ Execute the batch file “ConfigureWSUSOfflineforSiemens.bat”



```
C:\WINDOWS\system32\cmd.exe
Please enter the path to your WSUS Offline package (e.g. D:\WOU):
```

- ▶ Enter the path to your WSUS Offline Update package and press enter.
For example: If the path of the Updategenerator application is D:\WOU\wsusoffline\UpdateGenerator.exe, the path has to be set to D:\WOU (not D:\WOU\wsusoffline).

The WSUS Offline Update package is now well prepared and the UpdateGenerator is being started.

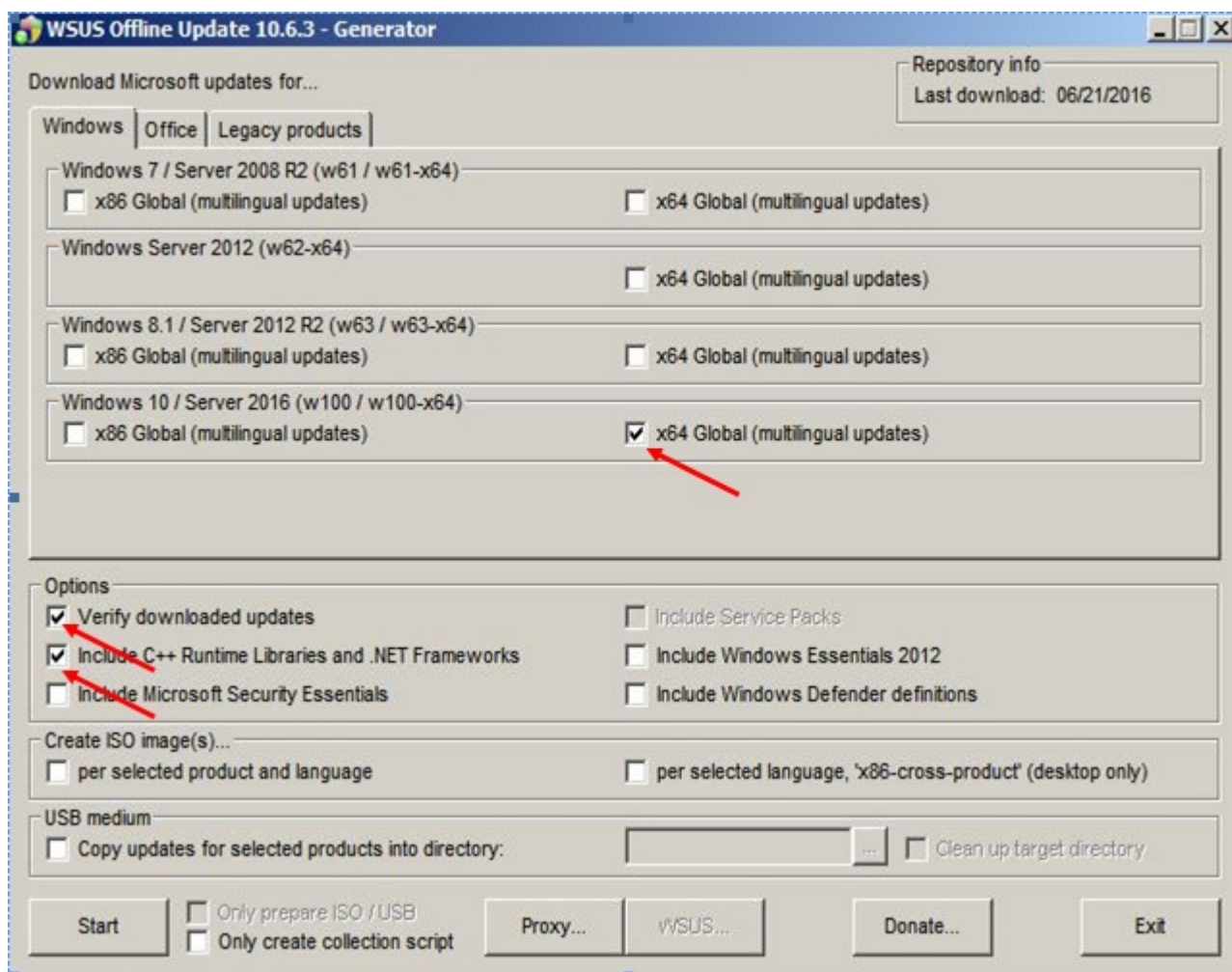
NOTE

Check the steps below to ensure that the configuration of your “WSUS Offline Update” installation was successful:

1. The files in folder “Custom_ExcludeList” (if available) have been copied to the folder “\wsusoffline\client\exclude\custom\” of your installation.

2. The files in folder "DynamicLinkLists" have been copied to the folder "\wsusoffline\static\custom\" of your installation.
3. The files in folder "WOU_ExcludeList" (if available) have been copied to the folder "\wsusoffline\exclude\" and replaced the existing files of your installation.
4. The file UpdateGenerator.ini in the directory "\wsusoffline\" has been updated with the parameters "skipdownload=Disabled", "skipdynamic=Enabled", "allowdotnet=Enabled", "allowsp=Disabled" and "includedotnet=Enabled".

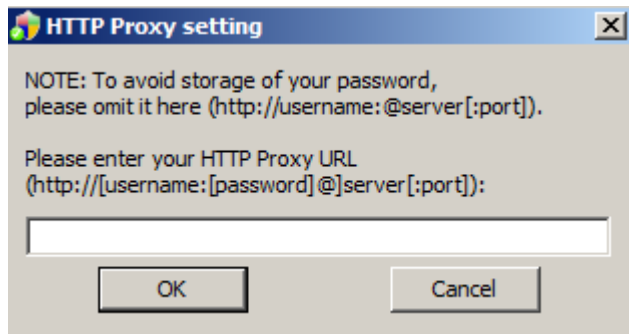
- Choose the operating systems you need by selecting the languages and/or the architecture. Select the checkboxes "Clean up download directories" and "Verify downloaded updates" in section "Options". Make sure that the WSUS Offline Update package is configured with the corresponding "Siemens WSUS Offline configuration package" (see hint before). Otherwise no patches will be downloaded.



NOTE

Only patches for Siemens released operating systems can be downloaded. If you select something where no corresponding list is stored under the folder "\wsusoffline\static\custom\", nothing will be downloaded for that selection.

- ▶ If you are connected via a proxy server to the internet press the button **Proxy...** and type your proxy connection string in the requested format.



- ▶ Furthermore you have the possibility to choose the type and location of the downloaded patches.
 1. By default the patches and everything needed for installation is copied to the directory `\wsusoffline\client` of your "WSUS Offline Update" package
 2. You can create ISO images per selected product and language and/or selected language by selecting the corresponding checkbox in the section **Create ISO Image(s)...**
 3. You can store the patches in any directory you want by selecting the checkbox **Copy updates for selected products into directory**

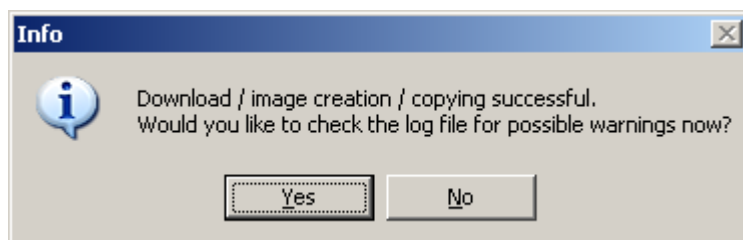
Download patches

- ▶ Press the **Start** button in the UpdateGenerator to start the download of patches

NOTE

"WSUS Offline Update" checks if the most recent version is installed on your system and ask you to install it. If your installation is not the recent version follow the instructions in chapter **Update installation of WSUS Offline Update** below.

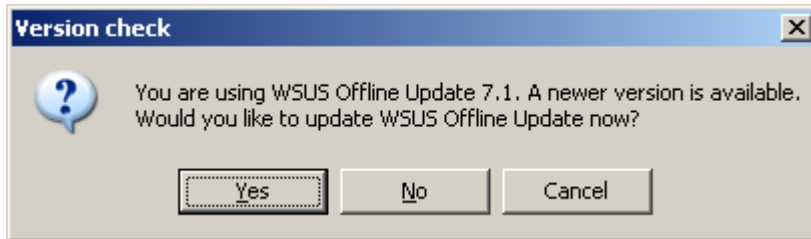
The following dialog appears if the download is finished!



- ▶ Press the **Yes** button to check the log file for possible warnings

Update installation of WSUS Offline Update

- ▶ Execute the UpdateGenerator.exe in the “\wsusoffline” directory of your “WSUS Offline Update” package.
- ▶ The following dialog appears if a newer Version of the “WSUS Offline Update” package is available:



- ▶ Press the button **Yes** to update your “WSUS Offline Update” package

The most recent version will be downloaded and copied to your “WSUS Offline Update” package. Already existing files will be overwritten except of configuration.

Your WSUS Offline Update is now up-to-date!

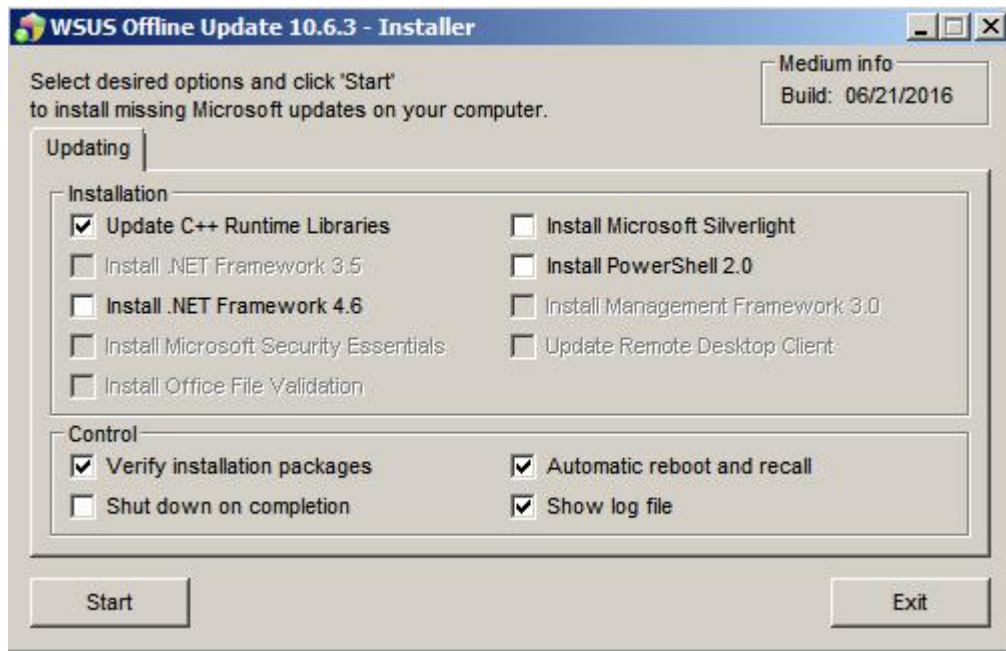
Deployment of patches

The type and the location of the installation package depend on what was chosen in the UpdateGenerator before. See chapter **Configuration of WSUS Offline Update**.

- ▶ Deploy the installation package to your systems:
 - Copy the directory \wsusoffline\client of your “WSUS Offline Update” package to your systems e.g. via network *or..*
 - Deploy the update CD you created with the ISO image before *or..*
 - Deploy an USB stick.

Installation of patches

- ▶ Execute the UpdateInstaller.exe in the installation package on the system you want to update.



- ▶ Select the components you want to update.

NOTE

- ▶ Select "Update C++ Runtime Libraries" to install security updates related to C++ framework.
- ▶ .NET patches are treated like common Microsoft patches so nothing special has to be done.
- ▶ If no patches were installed on your system please check the file UpdateInstaller.ini in the directory `\wsusoffline\client` for the parameter "skipdynamic". The value must be "Disabled".

RECOMMENDATION

Select the checkbox "Verify installation packages" to ensure the integrity of the patches, select "Show log file" to check the log file for warnings after installation and select "Automatic reboot and recall" if selectable.

-
- ▶ Press the **Start** button in the UpdateInstaller to start the installation of patches.
 - ▶ Reboot your system after the installation has finished.
 - ▶ Repeat the last two steps until no further patches will be installed.

NOTE

You can use the Microsoft Baseline Security Analyzer (MBSA) to ensure that all your systems are on the same patch level. In most cases the MBSA will show outstanding critical patches. That's because of custom Siemens exclude lists and the point in time where the latest "Siemens WSUS Offline Update configuration package" was created. These patches will also be displayed as "not found"-patches in the log file and the command shell output of the "WSUS Offline Update".

The MBSA can be downloaded via

<http://www.microsoft.com/download/en/details.aspx?displaylang=en&id=7558>.

Contact

Our Customer Support Center provides a 24-hour service.

Tel.: +49 (1805) 24-7000

Fon: +49 (1805) 24-2471

E-mail: support.energy@siemens.com