

| Remote Access

Cloud-based access to your
connected devices

Target groups and objectives

Target groups

- Desigo Ambassadors & RSS
- Solution Partners
- End customers

Objectives

- Give an information about Remote Access
- Explain main usage of Remote Access application for Desigo PXC4-5 controllers and Intelligent Valve
- Provide use cases to explain benefit of using Desigo Remote Access Applications

Before we start

- These slides can be used as a customer ppt
- Please adjust the presentation and related information according to your needs and target groups
- Please refer to Fact for detailed information and more features
- In the future more functions will be available for Remote Access application. This deck will be updated accordingly

Challenges of today



VPN Technology

- VPN has a lack of universal accessibility
- Devices are prone to vulnerability
- Declining market acceptance
- High maintenance costs



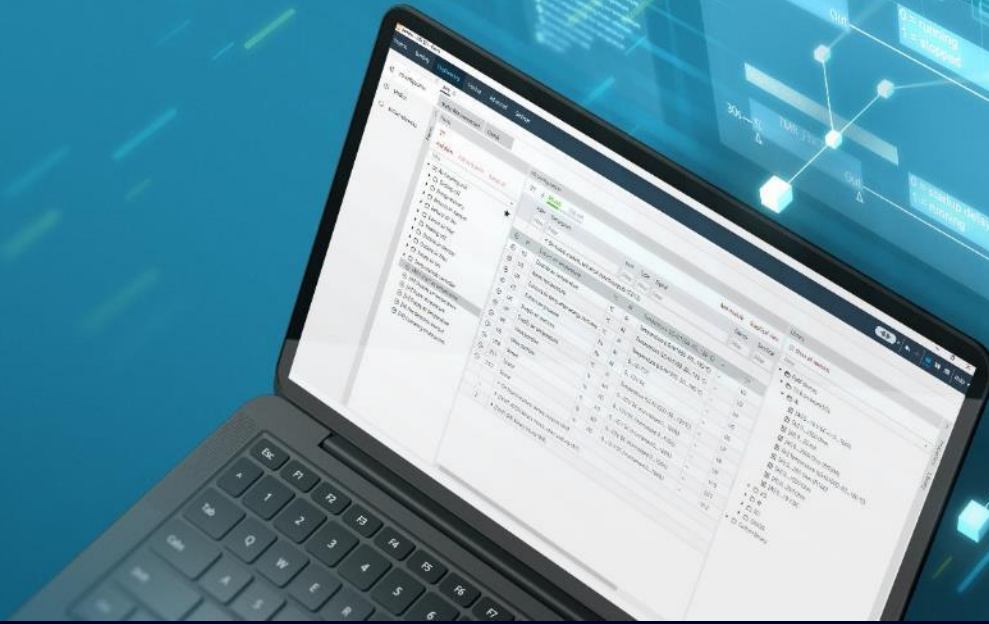
Cost of Time & Travel

- Even minor engineering and programming changes require travelling
- Response time is critical to maintain the business continuity
- Providing customer support in time is essential



Limited Expertise

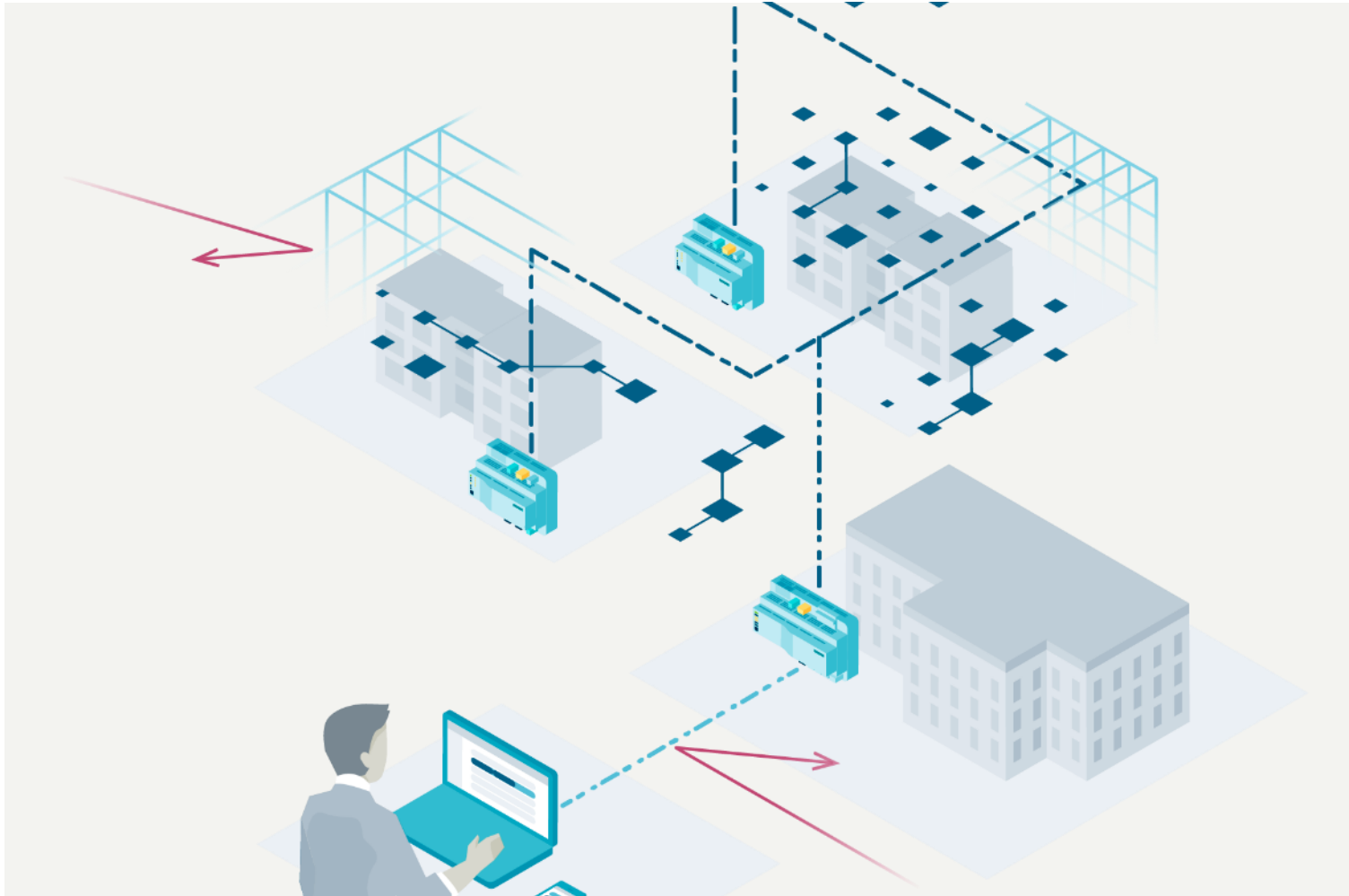
- Expert know-how for advanced troubleshooting is needed
- Collecting and sharing relevant diagnostics data is requested
- Not able to delegating the current tasks to other team members is delaying the projects



Desigo Remote Access

Cloud-based access to your Desigo controllers

Desigo Remote Access



Desigo Remote Access offers:

Engineering, operation and monitoring from remote

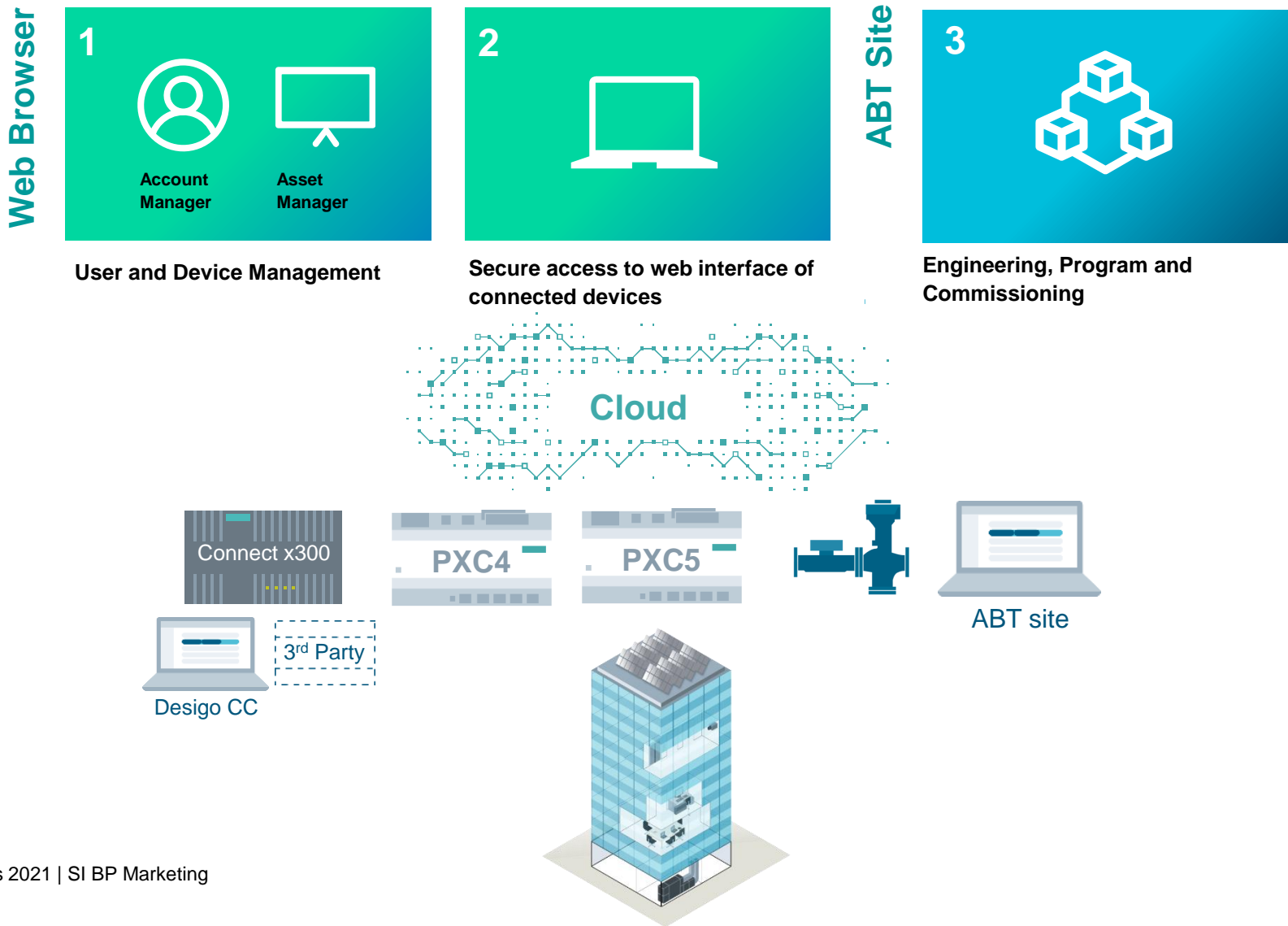
Access your system.

Anytime, from anywhere thanks to an integrated cloud connectivity and onboard web interface

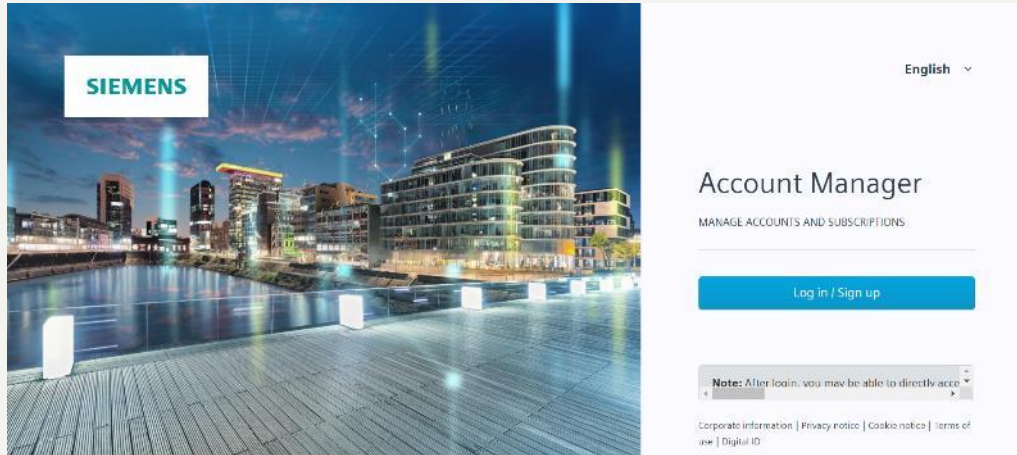
Desigo Remote Access offers:



Engineer/Technician

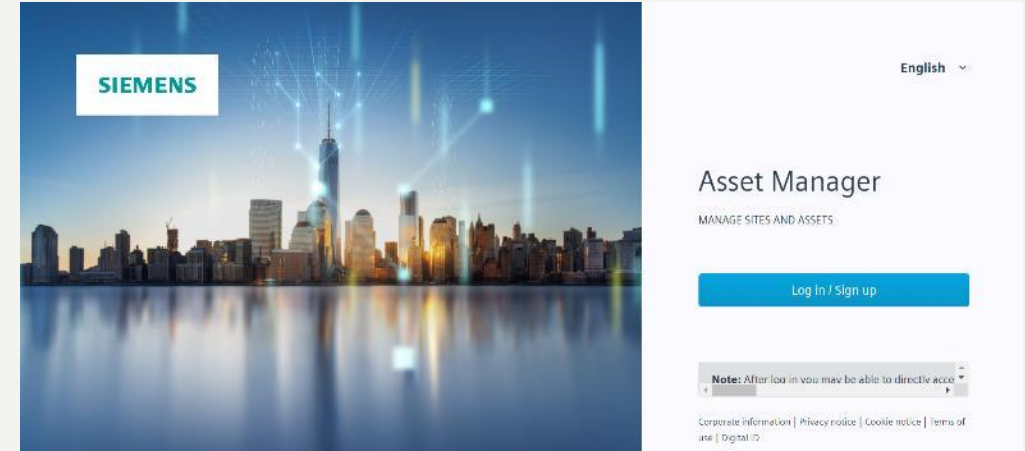


1- User and Device Management



Manage Accounts and Subscriptions

- Manage your subscription
- Create your company
- Invite your colleagues



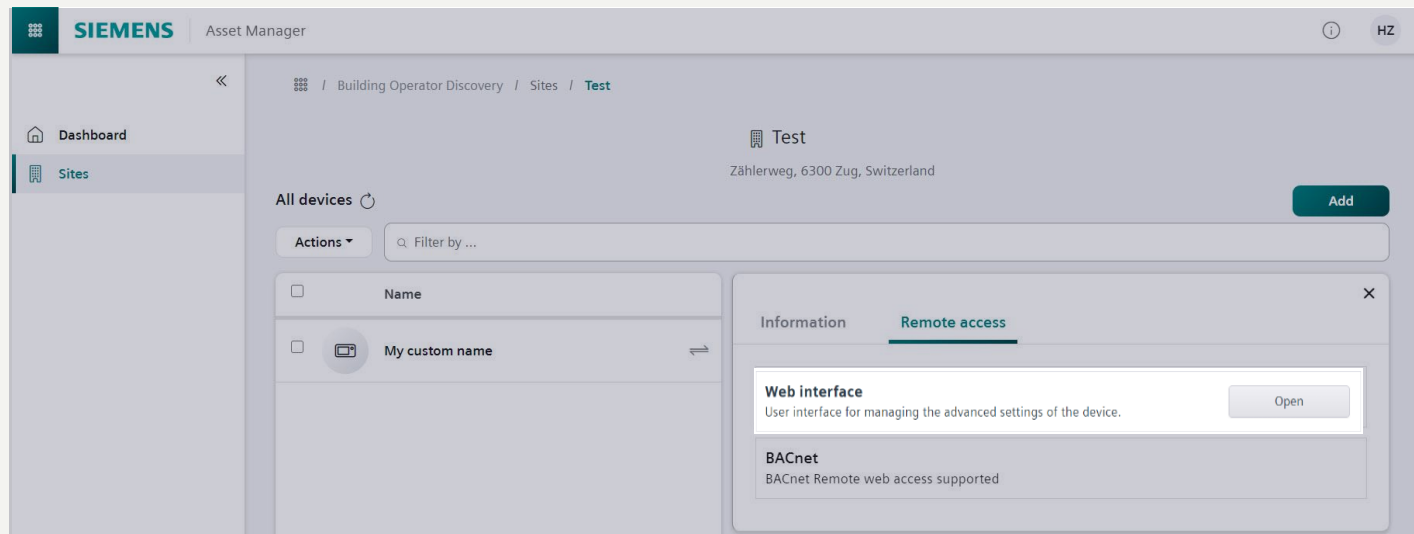
Manage Sites and Assets

- Add sites and devices
- Enter Activation key of devices
- Access Web Interface

2- Web Interface

Secure access to the web interface of connected devices

- Data point commanding (local and system wide*)
- Event Management
- Configure Scheduler



3- ABT Site

Siemens - ABT Site - CCloudIntegration

Projects Building **Startup** Advanced Settings

Assign Go online

Engineered devices

Work package: All devices Load...

To do	Auth	Name	Location	Equip-ID	De
		B_01			
		A_01			
Download		AS_Cloud02	B_01'A_01	02	PX
Download		AS_Cloud03	B_01'A_01	03	PX

Cloud available devices

Organizations: Connect Refresh

Device name	Device type	Serial number
testname PXC5	PXC5.E003	1400052803
andis pxc4 AS02	PXC4.E16	14000526A8

Engineer, Program and Commission

- Easy connection via the cloud
- Access all devices in your account remotely
- Work online with the device like in a local network

Who do we target?



**Solution partners
experts**



**System integrators
technicians**



Facility managers
(with basic web
interface)



**Remote BMS control
market**

Target Groups

Target market

Use case 1

Easy onboarding of new engineer

Rita, a new colleague joins a company and John should onboard her soon. She needs user rights to access the current projects but how?

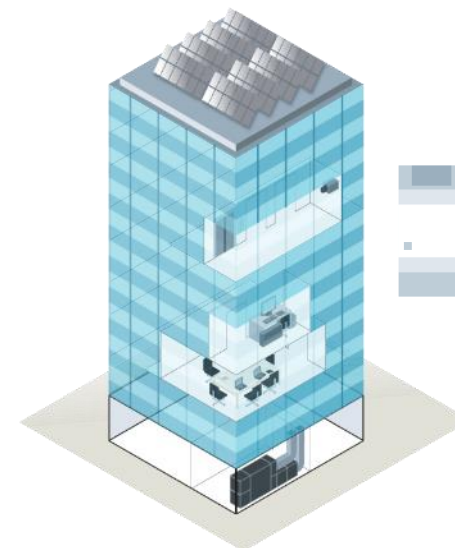
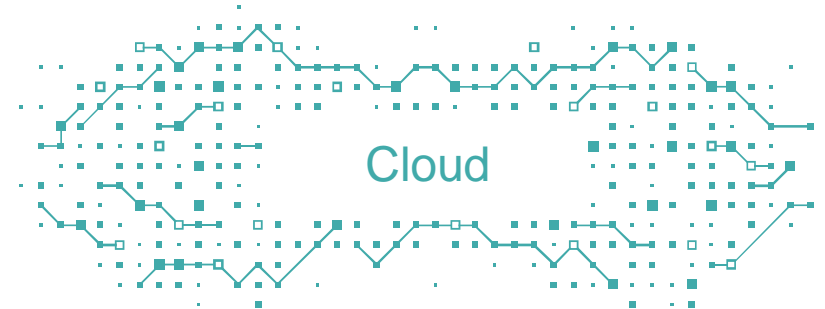
Soon, she needs to change the scheduler. How will she do it in this short notice?



John- Administrator



Rita- New Colleague



Solution 1

Easy onboarding of new engineer

- John invites Rita to the company via Account Manager
- John assigns her the required access
- Rita accesses the site via Asset Manager
- She access the web interface and make the changes in the scheduler

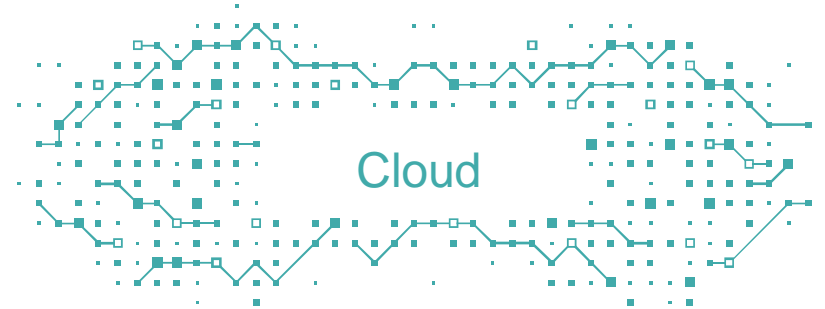


Use case 2

Remote operations for basic tasks

A customer has maintenance activity planned and asks Rita to help to suppress all events on that site for the next 24 hours.

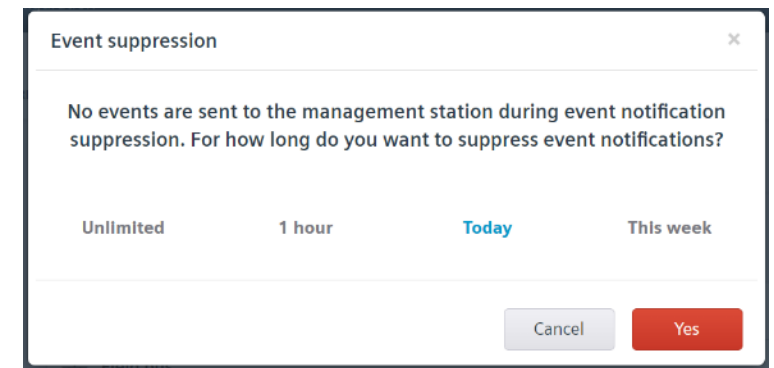
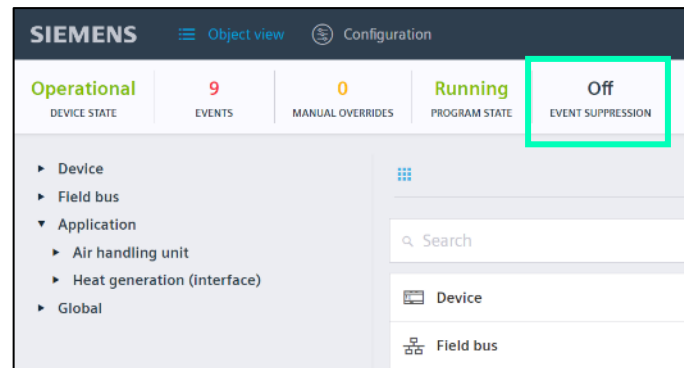
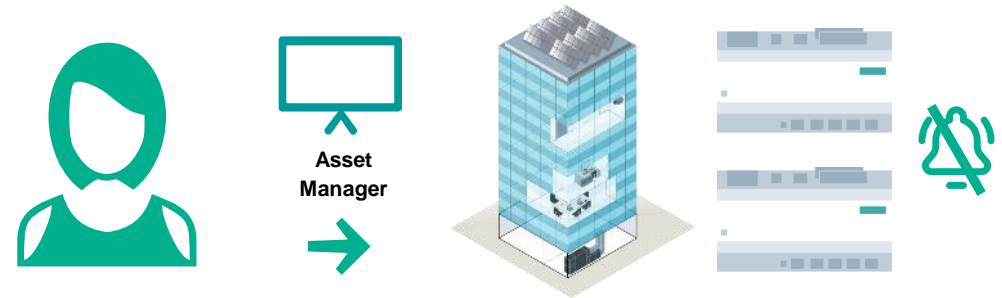
Does she need to travel?



Solution 2

Remote operations for basic tasks

- Access remotely to customer site via asset manager
- Initiate connection via Web Interface
- Activate the alarm suppression option

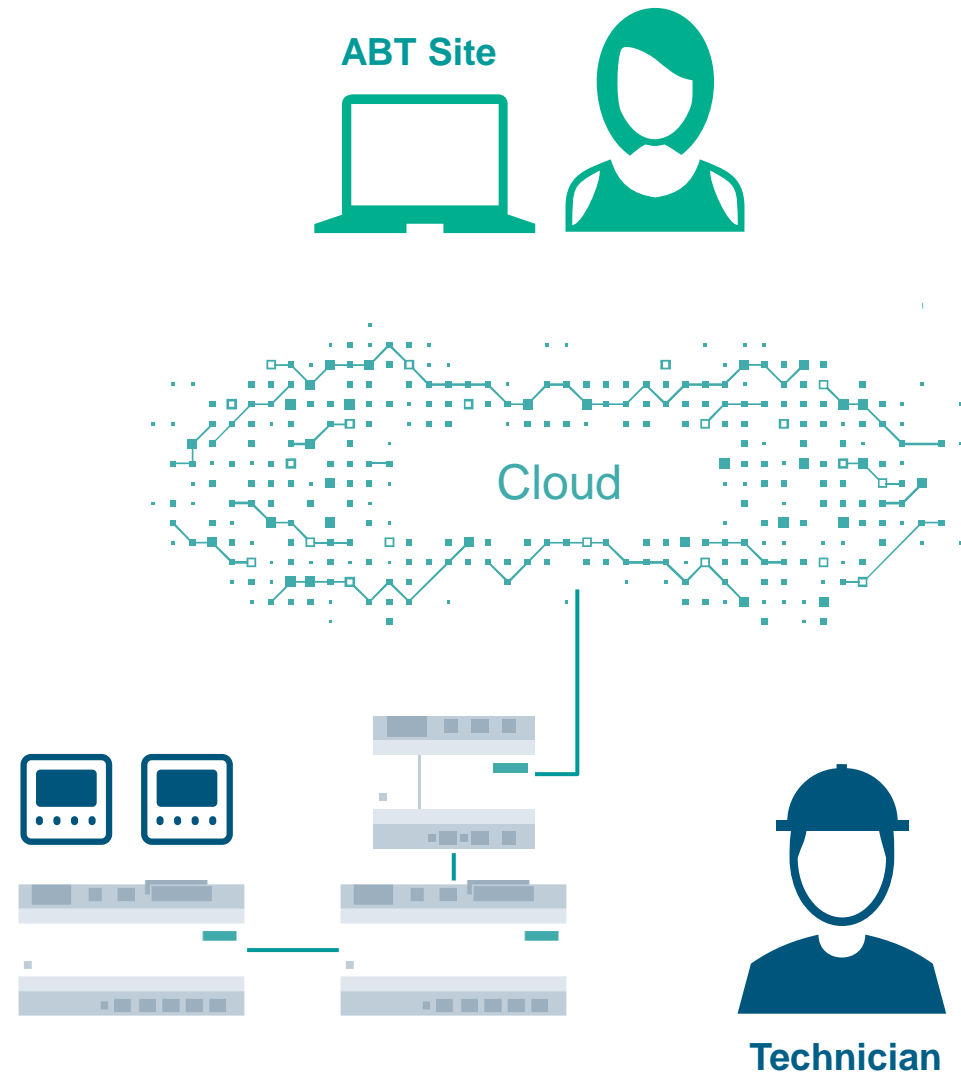


Use case 3

Remote engineering and commissioning support

A customer would like to monitor energy consumption therefore needs to add energy meters to the current project.

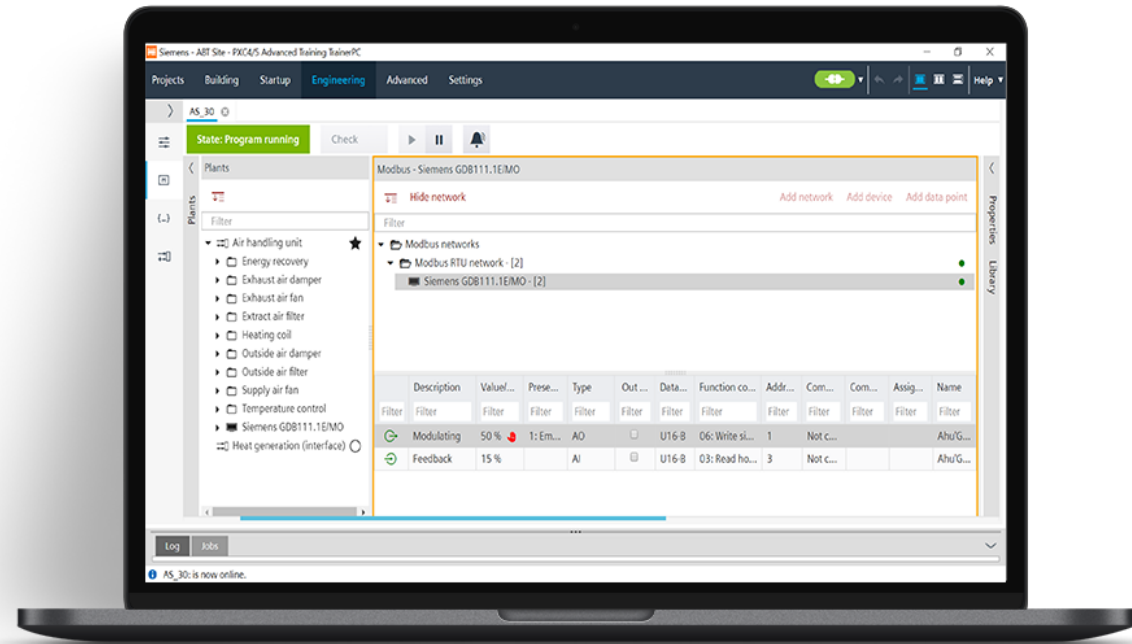
The technician has already installed the meters and asks Rita to engineer and commission them from remote.



Solution 3

Remote engineering and commissioning support

- Add Modbus devices from the library in ABT Site
- Configure the devices
- Load the configuration devices and test them online

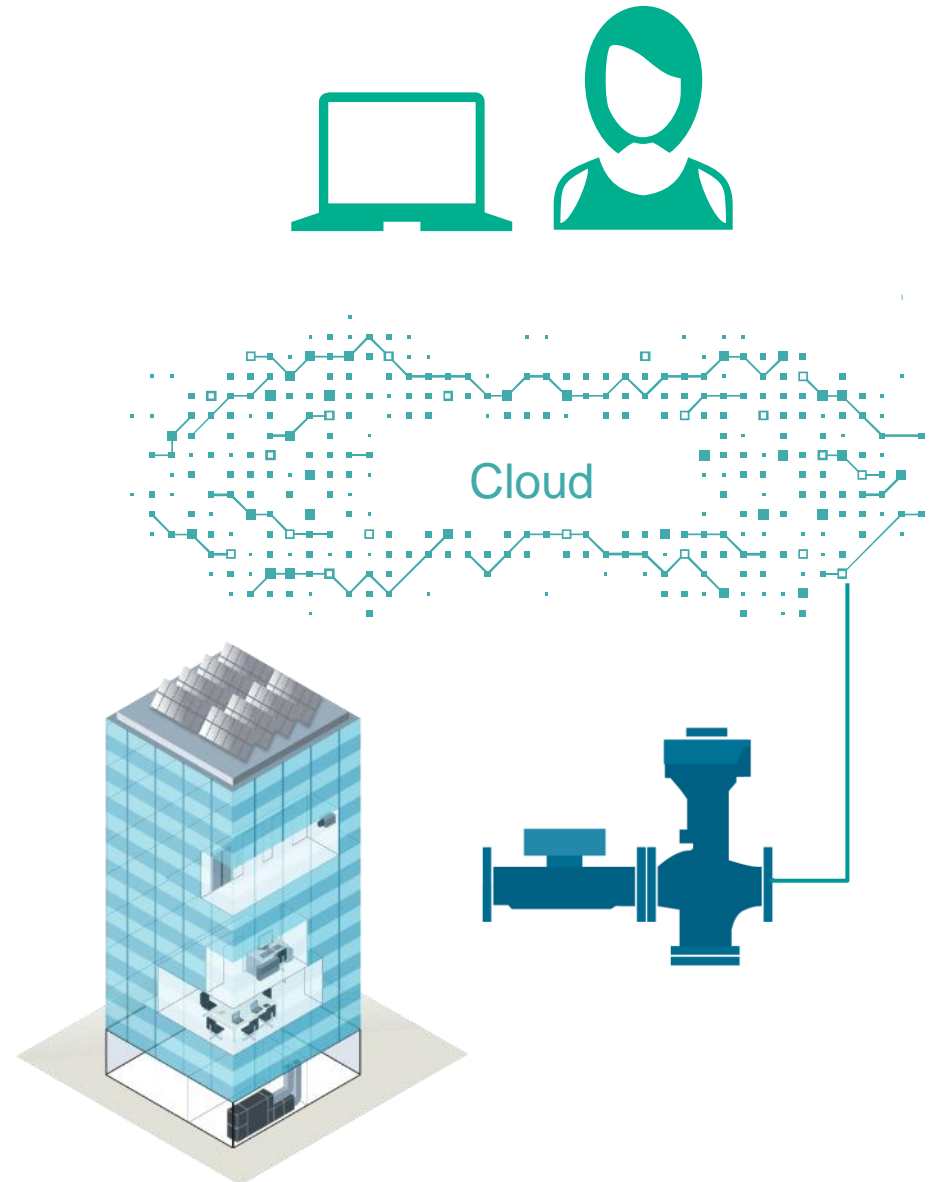


Use case 4

Remote operations for intelligent valve

The building' users complain about a low temperature in the rooms of the site. They ask Rita to increase the temperature in a short time.

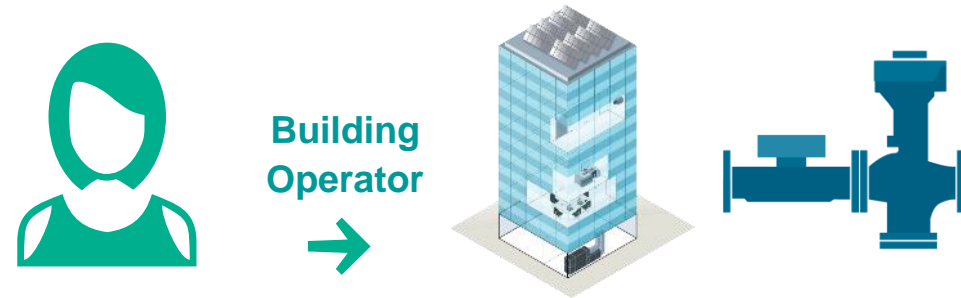
How can she rapidly solve the issue?



Solution 4

Remote operations for intelligent valve

- Access remotely to customer site via Building Operator
- Act on the setpoints connected to the intelligent valve
- Change the minimum volume flow



Siemens CS Cloud - Rack 4 - EV-100.E - iValve
Zählerweg 5, 6300 Zug, Schweiz

mi

	Name ^	Description	
	FDV7301	FDV7301 - Siemens CS Cloud - EV-100.E	23 Weeks
	B0600'R'Fir003'R7101x0100'HVAC'VivCti'EnTrtLm	Enable return temperature limitation	No
	B0600'R'Fir003'R7101x0100'HVAC'VivCti'EnVflMin	Enable minimum volume flow	No
	B0600'R'Fir003'R7101x0100'HVAC'VivCti'VflMin	Minimum volume flow	0 m³/h

Minimum volume flow
0 m³/h

Manual override

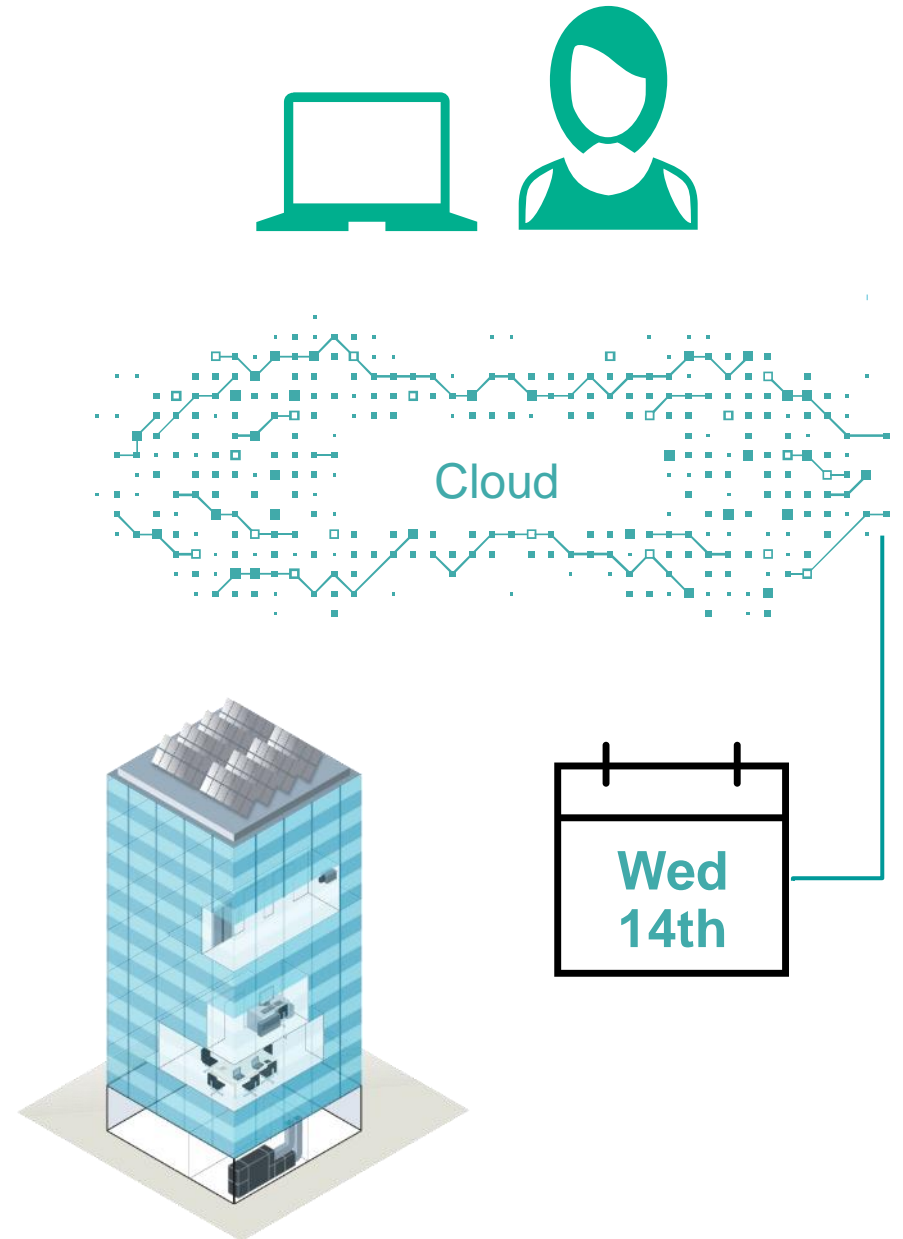
− 14 × ✓

Use case 5

Remote operations for scheduling

A customer has an external company event next Wednesday and asks Rita to reduce the heating on site for the day.

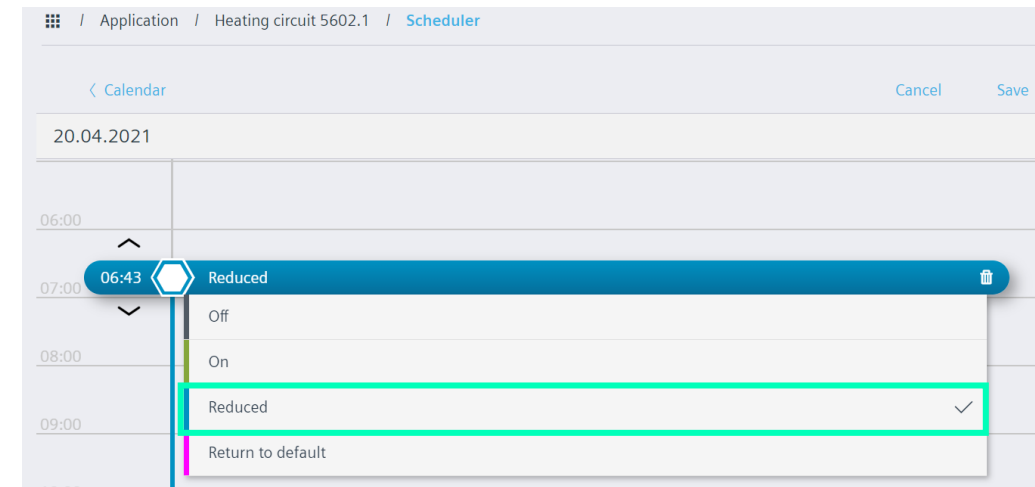
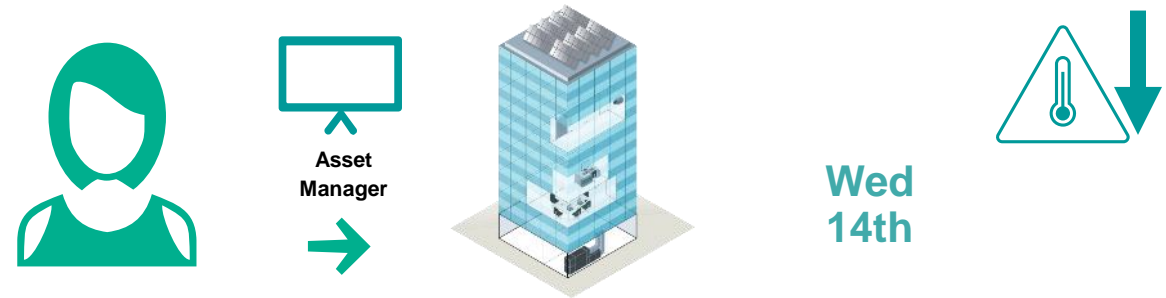
Does she need to travel?



Solution 5

Remote operations for scheduling

- Access remotely to customer site via asset manager
- Initiate connection via Web Interface
- Schedule an exceptional reduction of site heating on the selected date

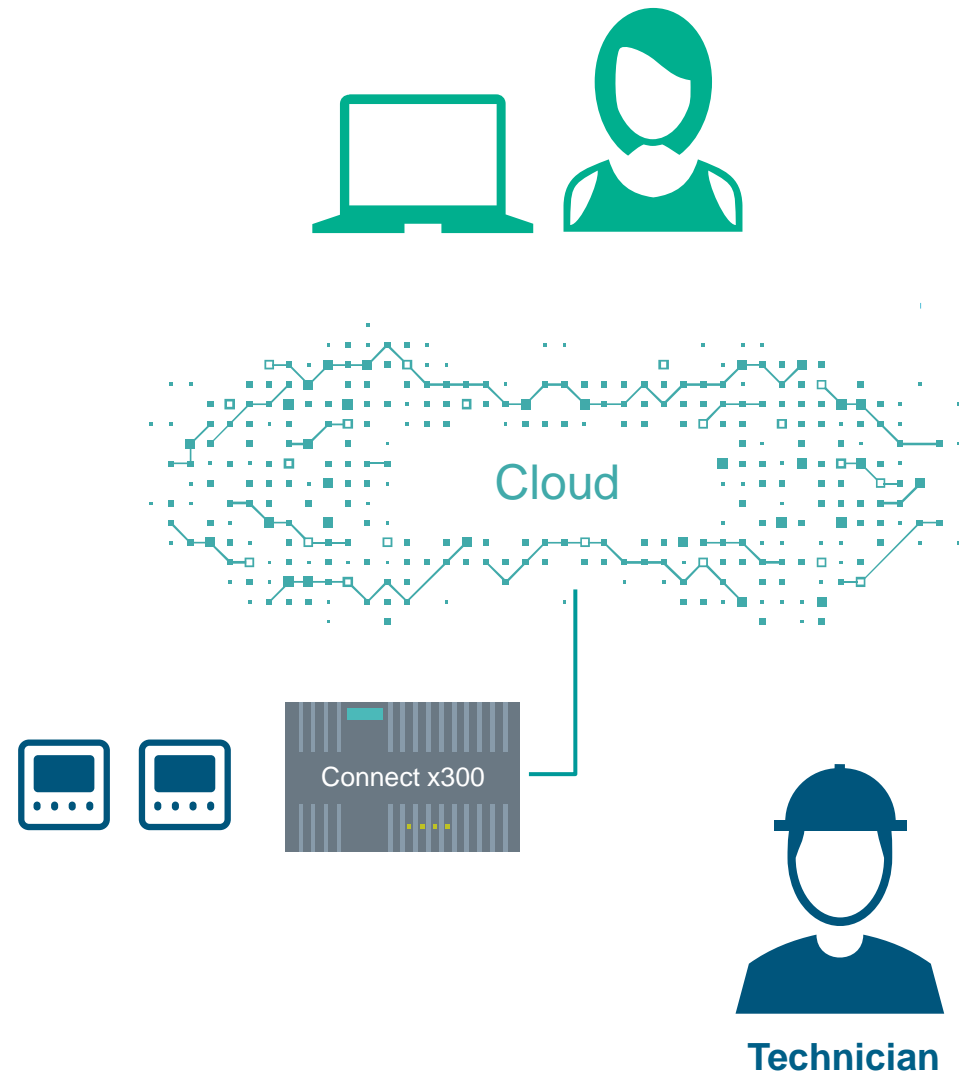


Use case 6

Remote engineering for Gateway configuration

A customer would like to add data points to its Connect x300 gateway.

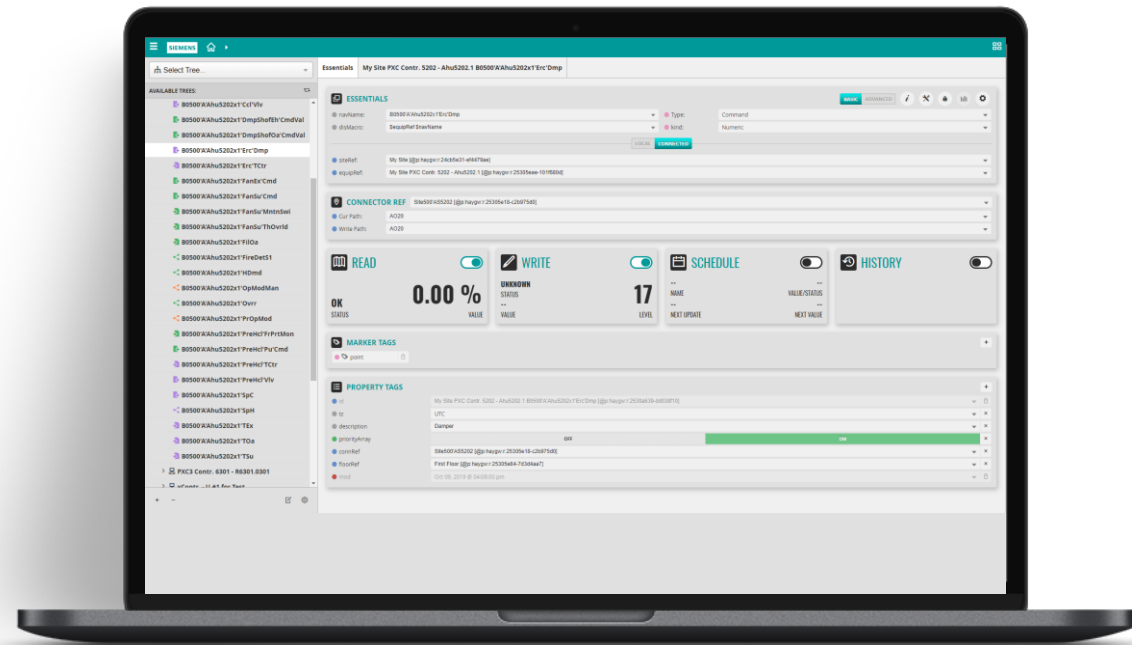
The technician has already installed the gateway and asks Rita to engineer and commission it from remote.



Solution 6

Remote engineering for Gateway configuration

- Access remotely to customer site via Building Operator Discovery
- Open the haystack gateway project
- Add data points to the Connect x300 gateway

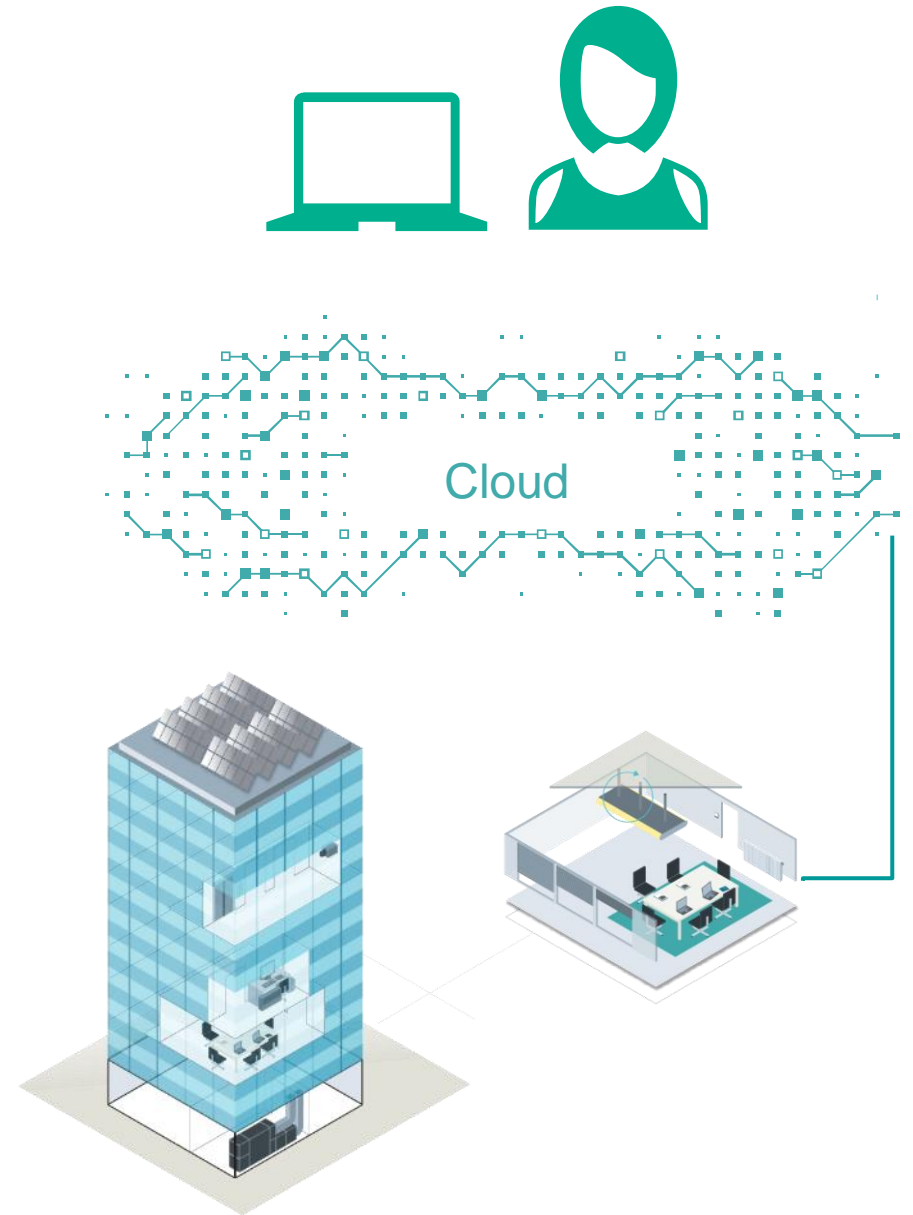


Use case 7

Remote room monitoring

A customer would like to see what are the current temperature and ventilation values in a specific room of the building site.

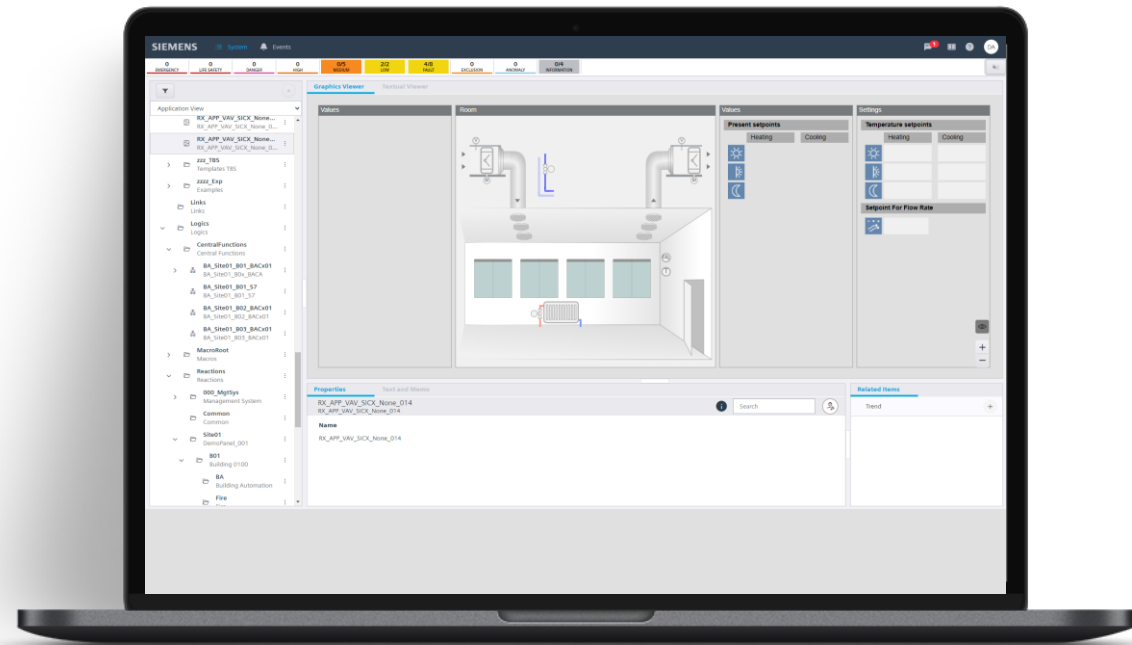
How can Rita rapidly show to the customer the current room situation?



Solution 7

Remote room monitoring

- Access remotely to customer site via Designo CC Flex Client
- Select the specific room
- See the full functionalities of the room and their location with 3D graphic viewer



Highlights of Desigo Remote Access



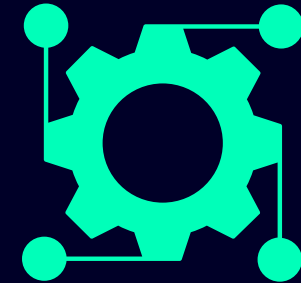
Easy and Secure Access

- Remote connection via cloud without intrusive IT infrastructure changes
- Built in features to enable security



Saving Travel cost and Time

- Perform your basic operation and monitoring tasks from anywhere
- Engineer and Commission PXC4/5 devices anytime



Intuitive Engineering

- Get things done better, faster, easier and more reliably
- Better collaboration of the experts and on-site technicians and increased customer satisfaction
- Remote engineering allows resource allocation in the company more efficient way

| BACK-UP

Desigo Remote Access

- Target Customer:** Solution partners experts & Systems integrators technicians
- Persona:** Field Service Technician & Commissioning engineer
- JTBD:**
 - Respond to technical issues and unplanned maintenance
 - Engineer and configure the devices from remote
- Features:**
 - ABT Site remote engineering
 - Firmware updates of PXC4 and PXC5
 - Remote web access to PXC4 and PXC5
 - Self administration
 - Real-time visibility
 - Command data points via web interface or ABT Site
 - Collect and download data of Intelligent Valve
- Limitations:**
 - Only for PXC4 and PXC5
 - View live and historical values at data point level
- Further information:**
 - [Intranet Page PXC4 & 5](#)
 - [Cloud Terms Page](#)

Subscription model
Standard* Base subscription for 1 year (paid upfront)
<ul style="list-style-type: none">1 site10 connected devices Order number: P55811-Y110-A100
Free trial* Free of charge; trial up to 6 months
<ul style="list-style-type: none">1 site10 connected devices Order number: P55811-Y111-A100

* hardware sold separately

