



**SIEMENS**

Vendor Finance

# Telecoms Funding Guidelines

[siemens.co.uk/finance](https://www.siemens.co.uk/finance)

We  
finance  
what  
matters



# Telecoms Funding Guidelines

At Siemens Financial Services we recognise that technology has changed the way we communicate.



To contact our team of experts  
[please click here](#)



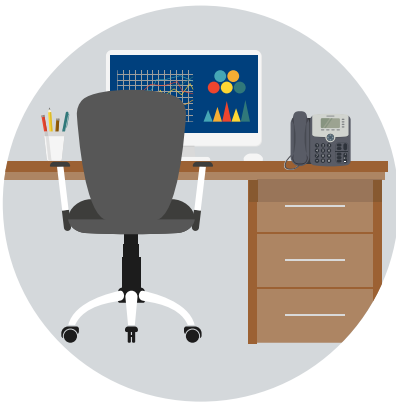
The pandemic has driven new ways of working and therefore we have taken the time to review our current Telecoms policy and summarised in the following document.



Siemens Financial Services will be moving to a 'Cost per User' model. The 'Cost per User' model encompasses all hardware, licenses, cabling, configuration and install required to setup an individual employee on the system.



# Funding Parameters Overview



## Traditional On-Premise Solutions

- > 12 – 84 month funding term
- > Maximum charge of £1,000 per User
- > Lease Calculation required
- > Settlement capped at 50% of total deal size for equipment settlements only



## Hosted Solutions including Hardware

- > 12 – 84 month funding term
- > Maximum charge of £1,000 per User
- > Hosting provider to be provided at proposal stage
- > Subscription licenses and small independent license providers will not be considered
- > Lease Calculation required
- > Settlement capped at 50% of total deal size for equipment settlements only



## Licence Only Solutions

- > 12 – 60 month funding term
- > Maximum charge of £800 per licence
- > Licence Author to be disclosed at proposal stage
- > All licenses must be termed or lifetime and provided by large national/global providers. Evidence should be provided if requested
- > Lease Calculation required
- > Subscription licenses and small independent license providers will not be considered



# Funding Parameters Overview



Solution Type	RRP Guideline	Max Term
Traditional On-premise system including hardware	Max £1,000 per user	84 Months
Hosted System including hardware	Max £1,000 per user	84 Months
License only (lifetime or termed)	Max £800 per license	60 Months
Handset only (no licenses)	Max £200 per user	84 Months





# SIEMENS

## Get in touch

If you would like to know more about how we can help your business please contact:

### **Manchester Office**

Sir William Siemens House, Princess Road,  
Manchester, M20 2UR.

### **UK Headquarters**

Sefton Park, Bells Hill, Stoke Poges  
Buckinghamshire SL2 4JS.

Email: [vendor.sfs@siemens.com](mailto:vendor.sfs@siemens.com)

To contact our team of experts  
[please click here](#)

**[siemens.co.uk/finance](https://www.siemens.co.uk/finance)**



Siemens Financial Services is a member of the Finance and Leasing Association.

If you would like to understand how SFS will use your data if we receive an enquiry or credit application, please visit our Fair Processing Notice at [siemens.co.uk/fair-processing-notice](https://www.siemens.co.uk/fair-processing-notice). View our Data Privacy Notice at [new.siemens.com/uk/en/general/privacy-notice.html](https://www.new.siemens.com/uk/en/general/privacy-notice.html)