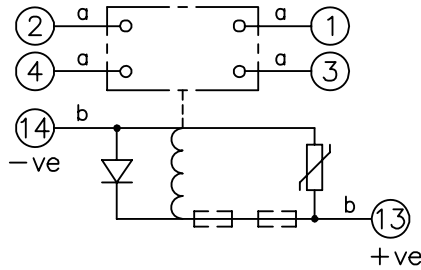


LOOKING ON FRONT OF RELAY

2112W50128



- NOTE:
- RESISTORS ARE NOT REQUIRED ON OTHER VOLTAGE VARIATIONS.
 - THE AR141T2 125VDC & 240VDC VERSIONS MUST HAVE RESISTOR 2101C21471 FITTED INSTEAD OF THE ONE SPECIFIED ON CHART. SEE RELEVANT B.O.M.
 - HEAVY DUTY CONTACTS ARE FITTED WITH BLOWOUT MAGNETS AND ARE POLARITY CONSCIOUS, SEE TABLE BELOW FOR +VE TERMINAL.

PRINTED ON 04/03/2010
ENSURE CORRECT REVISION
DESTROY AFTER USE

KEY	125	* 2101C21102 ONLY.	NIL.	SEE NOTE 2 *	ASSEMBLY WIRES USED	
	240	* 2101C21102 +EXT. RES.	EXT. RES. ONLY	SEE NOTE 2 *	a	2107B10003 4 OFF
○-○ make contact	VDC	RES.(T1,T2,T3,T6).	RES.(T4).	REMARKS	b	2107D10164 2 OFF
□ break contact	CONTACT CONFIG.		OUTPUT CONTACT PAIR / TERMINAL No.			<p>NOT SUBJECT TO UPDATE ONCE COPIED / PRINTED OR DOWNLOADED</p>
□-○ c/o contact	2M	M	M	/	/	
② ext. conn	1M	1B	M	B	/	
plug bridge - shorting		2B	B	B	/	
⊙ metering point						
5Kv barrier						
test socket - shorting						
plug & socket						

FRAME REFERENCE: E2FAQQ.
FRAME TERMINAL BLOCK ASSY: -

ASSEMBLY INSTRUCTIONS: -
TYPICAL ASSEMBLY DRAWING 2995G10032.
AT INDICATED POSITIONS FIT AS FOLLOWS:
T - FIT TRIP ISOLATION CONTACT 2995B10053
S - FIT STANDARD CONTACT 2995B10054
SECURE CONTACTS USING FIXING SCREW 2109F99009.
POSITIONS SHOWN BLANK ARE UNUSED

2	T	T	1
4	T	T	3
6	T	T	5
8	T	T	7
10			9
12			11
14	S	S	13
16			15
18			17
20			19
22			21
24			23
26			25
28			27

VIEW FROM NUMBERED SIDE OF BLOCK

OUTER TERMINAL BLOCK ASSY: -

ASSEMBLY INSTRUCTIONS: -
TYPICAL ASSEMBLY DRAWING 2995G10029.
AT INDICATED POSITIONS FIT AS FOLLOWS:
S - FIT STANDARD CONTACT 2995B10051
HC - FIT 'HEAVY CURRENT' KIT 2995G10030
WHERE ○-○ IS SHOWN FIT CT SHORTING KIT 2995G10031
POSITIONS SHOWN BLANK ARE UNUSED.
ALL POSITIONS FIT SCREW 2106F12506.

2	S	S	1
4	S	S	3
6	S	S	5
8	S	S	7
10			9
12			11
14	S	S	13
16			15
18			17
20			19
22			21
24			23
26			25
28			27

VIEW FROM INSIDE FACE

Copyright © 2002 VATECH REYROLLE ACP Ltd. Hebburn

Title: TERMINAL BLOCK & WIRING DIAGRAM FOR AR1-1T-D 2C RELAYS IN E2 CASE.			First used on:		
Similar Articles:			Supersedes:		
Drg.No. 2112W50128			Original Scale:		
2 RDW	03/03/10	MN112/3260 JB	VATECH REYROLLE AUTOMATION, CONTROL & PROTECTION		
1	15/04/02		DRAWN: A.LAW. CHECKED: APPROVED: R.D.WATSON DATE: 17/07/02 IE: OPS:		