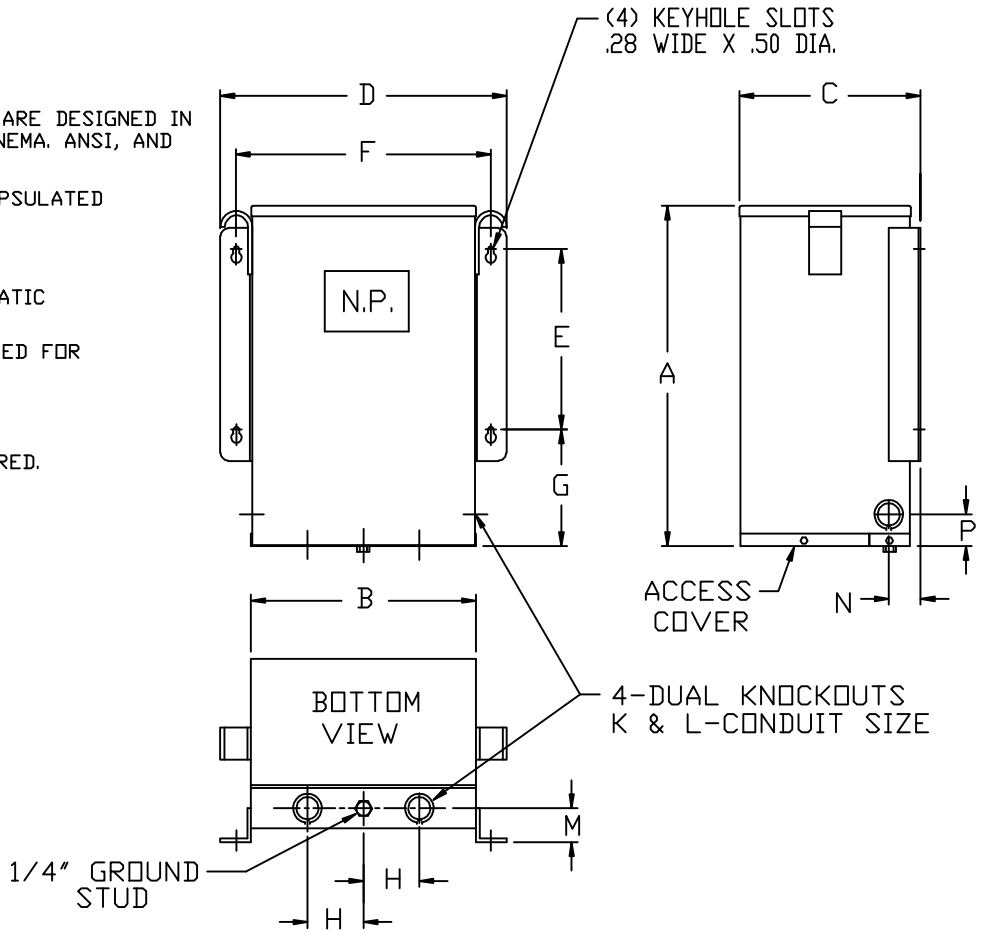


# SIEMENS

## DRY TYPE TRANSFORMERS

**NOTES:**

1. ALL UNITS ARE UL LISTED AND ARE DESIGNED IN ACCORDANCE WITH APPLICABLE NEMA, ANSI, AND IEEE STANDARDS.
2. THESE TRANSFORMERS ARE ENCAPSULATED CONSTRUCTION.
3. TRANSFORMERS ARE 135°C RISE.
4. FULL WIDTH COPPER ELECTROSTATIC SHIELD INCLUDED.
5. TRANSFORMERS ARE WALL MOUNTED FOR INDOOR / OUTDOOR USE.
6. PAINT COLOR IS ANSI #61 GRAY.
7. MOUNTING HOLES LOCATIONS, 1/4" MOUNTING HARDWARE REQUIRED.



KVA	NET WT. LBS. ALUM. UNITS	NET WT. LBS. COPPER UNITS	DIMENSIONS IN INCHES												
			A	B	C	D	E	F	G	H	K	L	M	N	P
3	82	90	13.12	12.25	8.06	15.12	5.25	13.62	5.50	3.00	3/4"	1"	2.00	2.00	1.75
6	119	128	13.12	12.25	8.06	15.12	5.25	13.62	5.50	3.00	3/4"	1"	2.00	2.00	1.75
9	160	240	15.12	16.12	9.06	19.00	8.25	17.50	5.12	4.00	3/4"	1"	2.00	2.00	1.75
15	230	240	15.12	16.12	9.06	19.00	8.25	17.50	5.12	4.00	3/4"	1"	2.00	2.00	1.75

KVA	QTY.	CATALOG NO.	VOLTAGE		TAPS	DRAWING
			PRIMARY	SECONDARY		
						<input type="checkbox"/> APPROVAL
						<input type="checkbox"/> RECORD
						<input type="checkbox"/> OTHER

CUST.	DWN. BY:	Siemens Industry, Inc.	
	DATE:		
JOB	CHK. BY:	GENERAL PURPOSE TRANSFORMERS THREE-PHASE, 600 VOLTS CLASS, 60 HZ.	
P.O.	DATE:		
TIE	APVD. BY:	DWG. NO. J-20	REV. D
S.O.	DATE:		DATE 06/22/10