

Siemens Industry, Inc., Rail Automation  
2400 Nelson Miller Parkway, Louisville, KY, 40223  
1-800-793-7233 Telephone: (502) 244-7400 Fax: (502) 244-7444

### Hybrid Lightning Arrester (HLA)

#### Low Voltage Surge Protection Unit

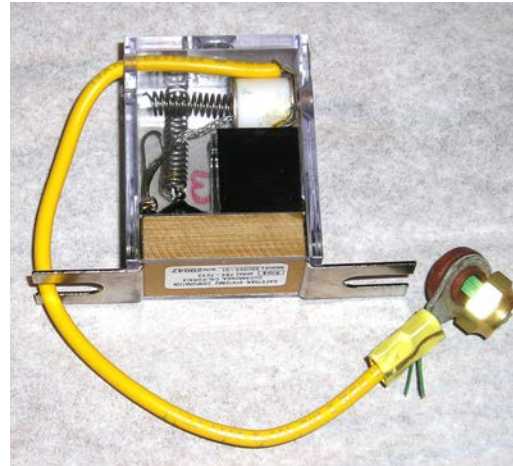
Model A90925 – 01 (5 amps DC)

Model A90925 – 02 (15 amps DC)

The Hybrid Lightning Arrester (HLA), model A90925, is designed to be connected electrically between the railroad tracks and electronic equipment located inside a bungalow or other weather-tight equipment enclosure. The HLA protects the equipment from

electrical surges but does not impede signal flow between the rails and the protected equipment. If a surge, such as a lightning strike, occurs on the rails, the HLA shunts the surge to ground while the connections to the equipment remain intact. Depending on the intensity of the surges, the HLA will survive several such hits and remain in service.

The HLA is a passive device and is compatible with equipment operating at voltages up to 30 VDC or 24 VAC. It is to be mounted in series between the track leads and the leads going to the equipment to be protected. Its sole function is to shunt electrical surges to ground thereby protecting the equipment from surge damage.



#### WARNING

**THE HYBRID LIGHTNING ARRESTER (HLA) SHOULD NOT BE USED ON CROSSING EQUIPMENT.**

#### WARNING

**THE GAS TUBE ARRESTER IN THE HLA MAY EXPLODE WHEN THE UNIT IS EXPOSED TO A HEAVY ELECTRICAL SURGE, SUCH AS A LIGHTNING STRIKE ON THE RAILS. WHEN WORKING IN THE IMMEDIATE AREA, DO NOT WORK IN CLOSE PROXIMITY TO THE ARRESTER. ALTHOUGH THE PROBABILITY OF PERSONAL INJURY IS LOW, THIS IS A STANDARD PRECAUTION FOR SUCH PROTECTIVE DEVICES AND IS UNDERSTOOD BY THE RAILROAD.**

## SPECIFICATIONS

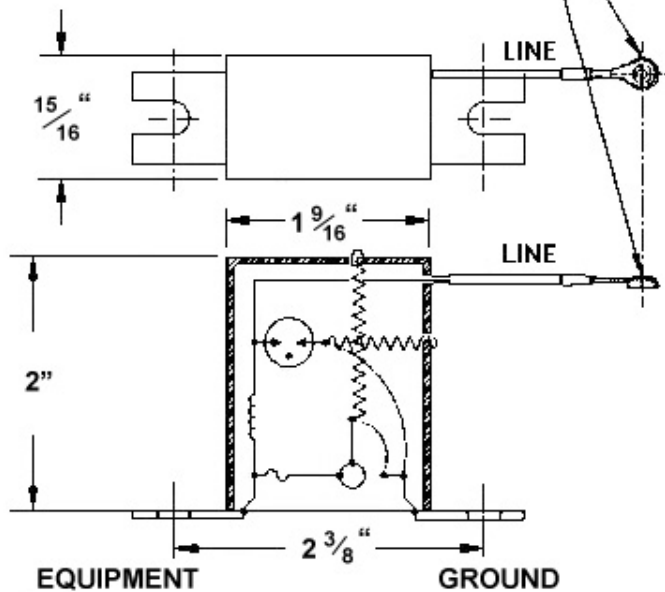
### Maximum operating voltage of protected equipment:

Model A90925 – 01      30 VDC or 24 VAC  
& A90925 – 02

### Maximum current:

Model A90925 – 01      5 amps @ 30 VDC  
& A90925 – 02      15 amps @ 30 VDC

6.42" LEAD INSULATED #14 AWG WIRE  
WITH TEST TERMINAL AND NUT  
90925-01 = YELLOW LEAD  
90925-02 = BLUE LEAD



90925 Dimensions

90925 Schematic

