

**IF IN DOUBT ASK  
DO NOT SCALE**

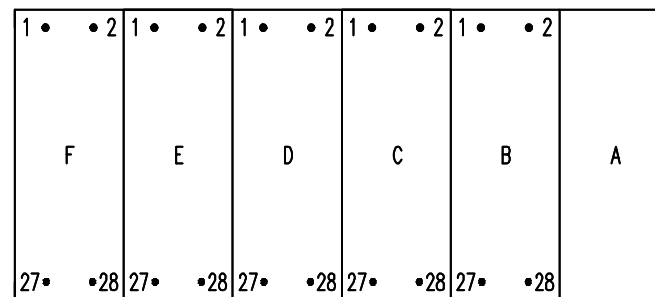
**EU EXPORT CONTROLS ECCN: N AL: N**  
**This document is not Export Controlled unless sending to Critical Countries.**

**Relay Earthing**

Terminal B28 of the PSU should be earthed by a direct connection to the device case earth stud (GND).

The device case earth stud should be solidly earthed by a direct connection to the panel earth.

Terminal contacts internal to case assembly close when device is withdrawn from case.



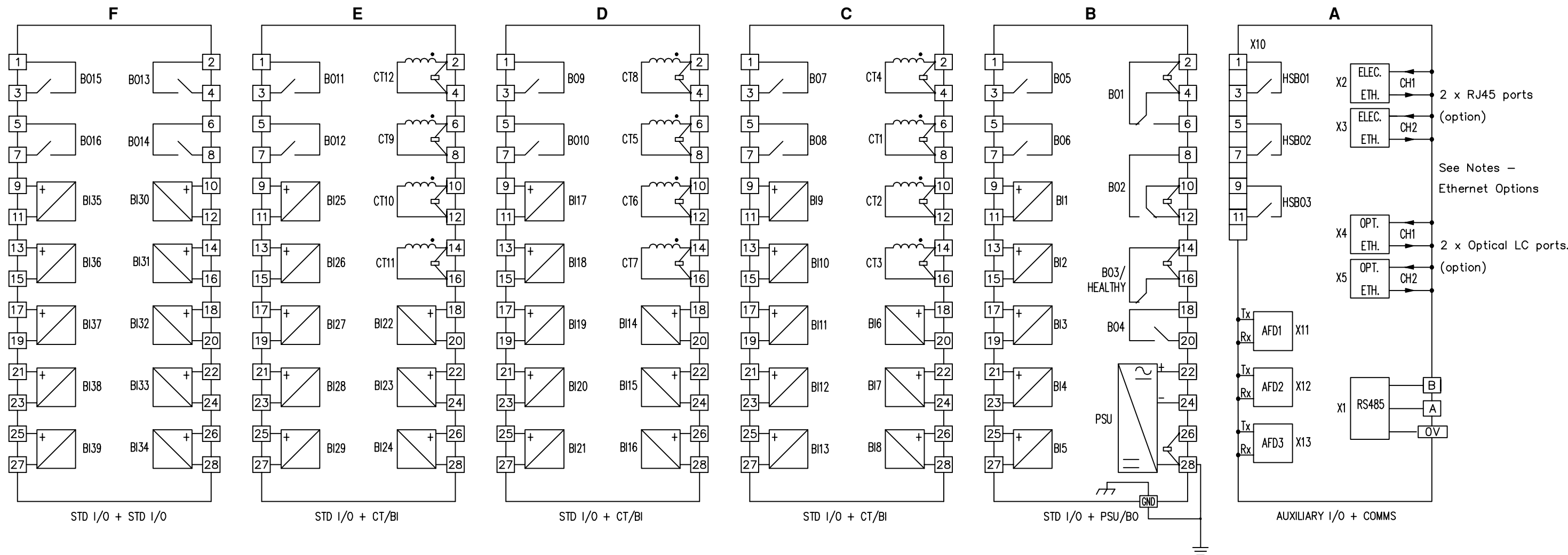
VIEWED FROM REAR

**Warning – Eye Safety**

Connectors X11–X13 are Laser class 1 (LED radiation only) products.

**Notes – Ethernet Options**

Device will be fitted with either 2 x electrical (RJ45) or 2 x optical (LC) ethernet ports.



| ABBREVIATIONS |                               |
|---------------|-------------------------------|
| AFD           | ARC FLASH DETECTOR            |
| BI            | BINARY INPUT                  |
| BO            | BINARY OUTPUT                 |
| COMMS         | COMMUNICATIONS                |
| CT            | CURRENT TRANSFORMER           |
| ELEC          | ELECTRICAL                    |
| ETH           | ETHERNET                      |
| GND           | GROUND (CASE EARTH STUD)      |
| HSBO          | HIGH SPEED BINARY OUTPUT      |
| OPT           | OPTICAL                       |
| PSU           | POWER SUPPLY UNIT (AUXILIARY) |
| STD I/O       | STANDARD INPUT/OUTPUT         |

**NOT SUBJECT TO UPDATE  
ONCE COPIED / PRINTED  
OR DOWNLOADED**

|       |          |              |
|-------|----------|--------------|
| 2 NC  | 21/04/21 | 3Z2000249 JS |
| 1     | 28/05/20 | CHANGE NOTED |
| ISSUE | DATE     | NOTED        |

|                  |  |                         |
|------------------|--|-------------------------|
| Finish: —        | Title: REAR TERMINAL CONNECTIONS – 7SR5430–6ADx6–0AA0<br>12CT, 39BI, 16BO, 3AFD, 3HSBO | First used on: —        |
| Treatment: —     | <b>SIEMENS PLC</b>   | Original Scale: NTS     |
| Drawn: J SPOWART |  | Dwg No. 2518W50129      |
| Checked: K.H     | Approved: N CAMPBELL   | Date: 10/06/20          |
| Copyright © 2019 |  | A3 SIEMENS PLC. Hebburn |