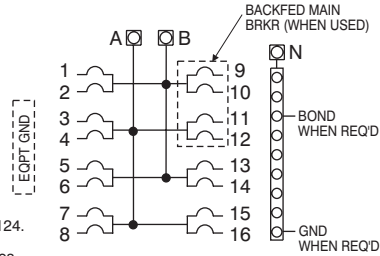


Indoor Load Center

Model **10**

Enclosure **Type 1**

- Catalog Number **LC008DF** (FLUSH MOUNT COVER)
- LC008DFG** (FACTORY INSTALLED GROUND BAR)
- LC008DS** (SURFACE MOUNT COVER)
- LC008DSG** (FACTORY INSTALLED GROUND BAR)



Rating: 125 Amps. Max. See Rating of Main Breaker if used.
 Main Breaker requires LX400HD Hold-Down Kit.
 120/240 Volts ~ 1 Phase 3 Wire
 208Y/120 Volts ~ 1 Phase 3 Wire
 Rating limited to 100A when subject to New York City Elec. Code Bulletin No. 124.

For installation by a qualified person in accordance with all local electrical codes and/or the National Electrical Code ®.

Diagram indicates maximum number of breaker poles.

To reset breakers with tripped handle position between ON and OFF, move handle to OFF then to ON.

Accessory Kits:

- Equipment Ground Bars: Catalog No. Series "LX"
- Deadfront Filler Plates: Catalog No. LX100FP
- Breaker Hold Down: Catalog No. LX400HD
- 2/0 Branch Neutral Terminal: Catalog No. DLK1

Suitable For Use As Service Equipment when not more than six main disconnecting means are provided and when not used as a lighting and appliance branch circuit panelboard (see Article 408-14 of the National Electrical Code ®) or when used with integral main breaker. When used as service equipment, apply "Service Disconnect" label(s) to front next to appropriate breaker handle(s).

SHORT CIRCUIT CURRENT RATING

This panelboard has a maximum short circuit current rating of 100,000 Amps RMS symmetrical, 120/240V~. The actual rating is dependent on the branch breakers installed in this panelboard and the main/feeder breaker, if any, installed ahead of this panelboard. The correct main breaker/feeder/main breaker/branch breaker series combinations to be used are listed in the tabulation below. Any circuit breaker installed, replaced, or added in this panelboard must be manufactured by Siemens (Murray Brand) and must be of the correct type as indicated in the tabulation below. Use of other circuit breakers in this equipment will void

MAIN BREAKER When the main protecting the system is a	FEEDER/MAIN BREAKER And the breaker protecting this panelboard, separate or integral, is a type	BRANCH BREAKER And the branch breakers installed are type	Then the max. Short Circuit Current Rating in RMS Symmetrical Amps, 120/240 V~ is
None used or Siemens breaker types JXD2-A, JD6-A, JXD6-A, HJD6-A, HJXD6-A, LD6-A, LXD6-A, HLD6-A, HLXD6-A, MD6, MXD6, HMD6, HMXD6, ND6, NXD6, HND6, HNXD6 or CLASS J, T, R or L FUSES	NONE USED	MP-T, MH-T, MP-GT, MP-AT, MP-ET	10,000
	MP-T, MPP-T, MD-A, MQ, MD-TR	MPT, MH-T, MP-HT, MP-MT, MP-GT, MP-HGT, MP-ET, MP-HET, MP-AT, MP-HAT	
	MD-H, MD-HTR	MP-T, MH-T (15-30A Only), MP-HT, MP-MT, MP-GT, MP-HGT, MP-ET, MP-HET, MP-AT, MP-HAT	
NONE USED	MP-HT	MP-T, MH-T, MP-HT, MP-MT, MP-GT, MP-HGT, MP-ET, MP-HET, MP-AT, MP-HAT	22,000
	MQH		
	MQL		
Siemens breaker types JXD2-A, JD6-A, JXD6-A, LD6-A, LXD6-A	MQH, MQL	MP-T, MP-HT, MP-MT	42,000
	NONE USED	MP-HT, MP-MT	
Siemens breaker types JXD2-A, JD6-A, JXD6-A, LD6-A, LXD6-A, MD6, MXD6, ND6, NXD6	MP-HT, MP-MT, MPP-MT, MPP-PT	MP-T, MH-T, MP-HT, MP-MT, MP-GT, MP-HGT, MP-ET, MP-HET, MP-AT, MP-HAT	65,000
	NONE USED		
Siemens breaker types HJD6-A, HJXD6-A, HLD6-A, HLXD6-A, HMD6, HMXD6, HND6, HNXD6 or CLASS J, T, R or L FUSES	MP-HT, MP-MT, MPP-MT, MPP-PT	MP-T, MH-T, MP-HT, MP-MT, MP-GT, MP-HGT, MP-ET, MP-HET, MP-AT, MP-HAT	100,000
	MPP-PT		
NONE USED	MP-T, MP-HT, MP-MT	MP-HT, MP-MT	100,000
	MP-HT, MP-MT		
300V CLASS T FUSES - 200A MAX.	MP-T, MP-HT, MP-MT		
300V CLASS T FUSES - 600A MAX.	MP-HT, MP-MT		

USE CU/AL WIRE at panelboard line and neutral terminals. See markings on breakers for their wiring and torque requirements.

Size wire only to 60°C or 75°C ampacity limits. Size wire in accordance with breaker markings and wire bending space requirements.

Tighten neutral bar terminals as follows:

Wire size:	14-10 AWG	8 AWG	6 AWG	4 AWG
Torque:	20 lb-in	25 lb-in	35 lb-in	45 lb-in

Tighten equipment ground bar terminals as follows:

Wire size	14-10 AWG	8 AWG	6 AWG	4-1/0 AWG
Small terminals:	20 lb-in	25 lb-in	35 lb-in	---
Large terminals:	35 lb-in	40 lb-in	45 lb-in	45 lb-in

Main terminal wire range: 4 - 2/0 AWG.

Tighten terminals A, B & N to 45 lb.-ins.

Ground bar terminal wire range:

Small terminals: 14-6 AWG CU; 12-6 AWG AL.
 Upper Large terminals: 14-1/0 AWG CU; 12-1/0 AWG AL.
 Remaining Large terminals: 14-2 AWG CU; 12-2 AWG AL.

Equipment ground bar terminals are suitable for the following combinations:

Small terminals: One 14 to 6 AWG CU; One 12 to 6 AWG AL; Two 14 AWG CU; Two 12 AWG CU; Two 12 AWG AL solid wires.

Large terminals: One 14 to 2 AWG CU; One 12 to 2 AWG AL; Two or three 14 AWG CU; Two or three 12 AWG CU or AL.

When used as service equipment, unused neutral bar terminals may be used to terminate equipment grounding wires in the combinations indicated for small equipment ground bar terminals.

4094862 Rev.A

Murray Electrical Products
 Siemens Energy & Automation, Inc.
 Alpharetta, Georgia U.S.A.

J2



® The National Electrical Code is a registered trademark of the National Fire Protection Association.

Assembled in Mexico

© 2005 Copyright Siemens Energy & Automation, Inc.

IMPORTANT: DO NOT ALLOW PETROLEUM BASED (HYDROCARBON) SPRAYS, CHEMICALS, SOLVENTS OR ANY PAINT TO CONTACT INTERIOR COMPONENTS. PETROLEUM BASED CHEMICALS CAN CAUSE DEGRADATION OF ELECTRICAL INSULATING MATERIALS.

DANGER		PELIGRO
<p>Hazardous Voltage. Will cause death, serious injury or substantial property damage.</p> <p>Turn off power supplying this equipment before working inside.</p>		<p>Voltaje peligroso. Causará la muerte, lesiones graves o daño substancial a la propiedad.</p> <p>Desconecte el suministro de energía a este equipo antes de trabajar en su interior.</p>